

Contents [[hide](#)]

- [1 ZZPLAY ITZ-BNT-A Android Auto Integration](#)
- [2 Components](#)
- [3 Radio Modification](#)
- [4 Bentley Connection Diagram](#)
- [5 DIP Switch Settings](#)
- [6 User Operation](#)
- [7 ZZPLAY Interface](#)
- [8 ZZPLAY Interface Settings Menu](#)
- [9 FAQ](#)
- [10 Documents / Resources](#)
 - [10.1 References](#)



ZZPLAY ITZ-BNT-A Android Auto Integration



Product Specifications

- Components: ZZPlay Interface PCB Harness, AMI AUX Adapter, WIFI/BT Antenna, Main Harness, Internal Modification PCB, Audio Cable, Velcro for module
- Date: 04/26/2023

Components



Radio Modification

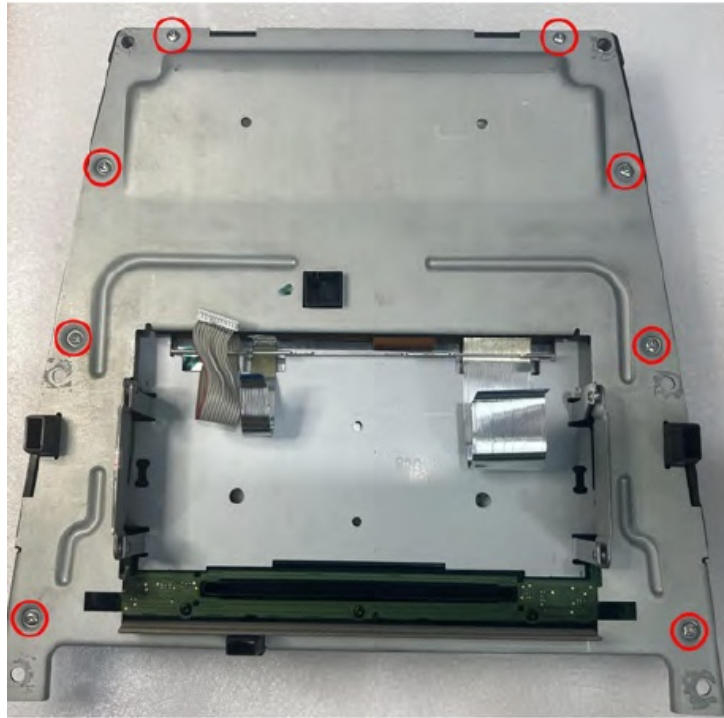
1. After removing the radio from the vehicle, bring to a bench top and lay face down on a soft material to avoid scratches. Remove (4x) Torx screws shown here (2 on each side)



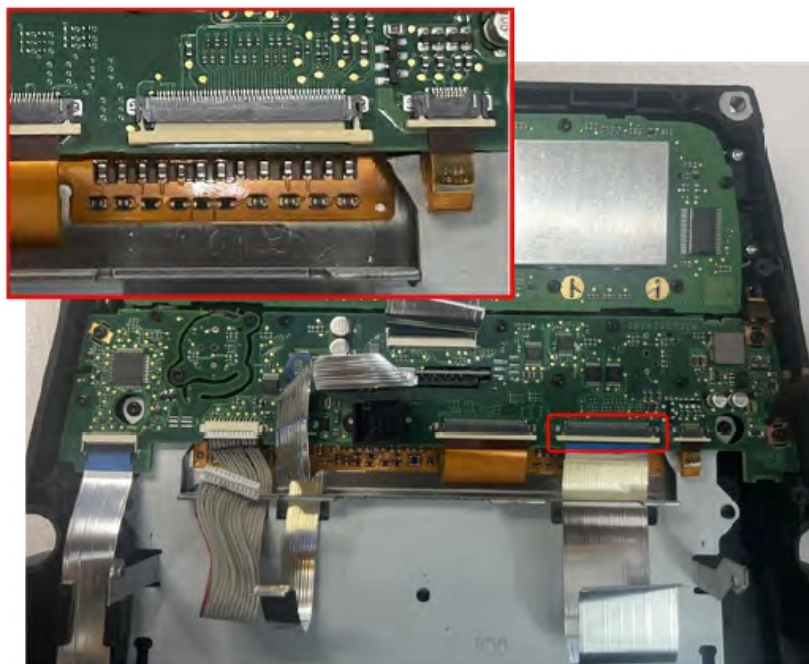
2. Carefully lift and lay down the tuner side on the back of the screen like shown. NOTE: be careful not to break ribbon cables!



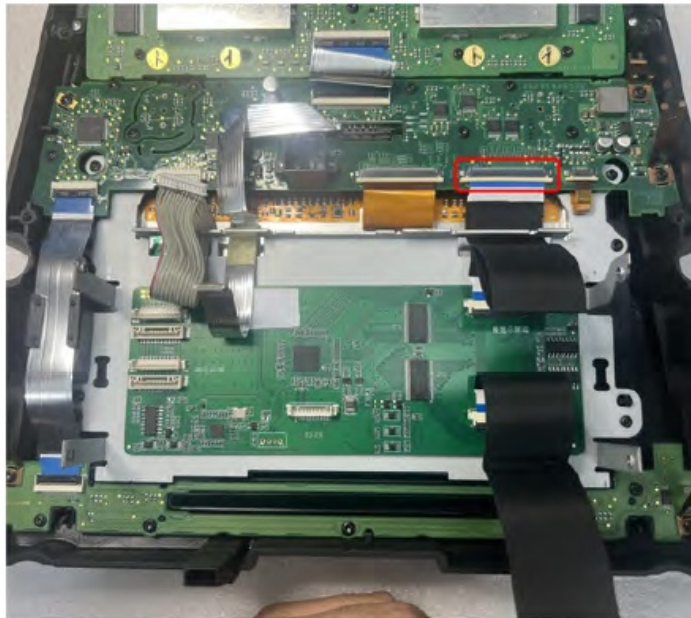
3. Disconnect (3x) ribbon cables.



7. Remove (1x) OEM ribbon and set aside. This ribbon will no longer be used after installation.



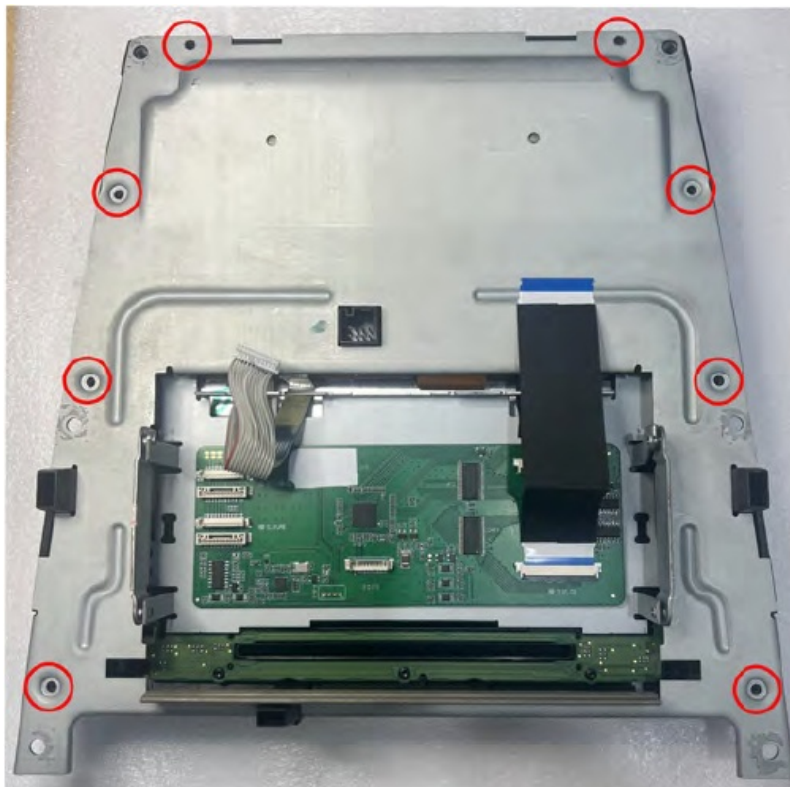
8. Place the provided PCB down using the double-stick to the back of the screen like shown. Connect the upper black ribbon from the PCB to the OE connector (removed from step 7) like shown.



NOTE: these connectors are not used. Only the ribbons with black covering are used for this integration.



9. Replace the backing plate (removed on step 6) and replace all (8x) Torx screws.

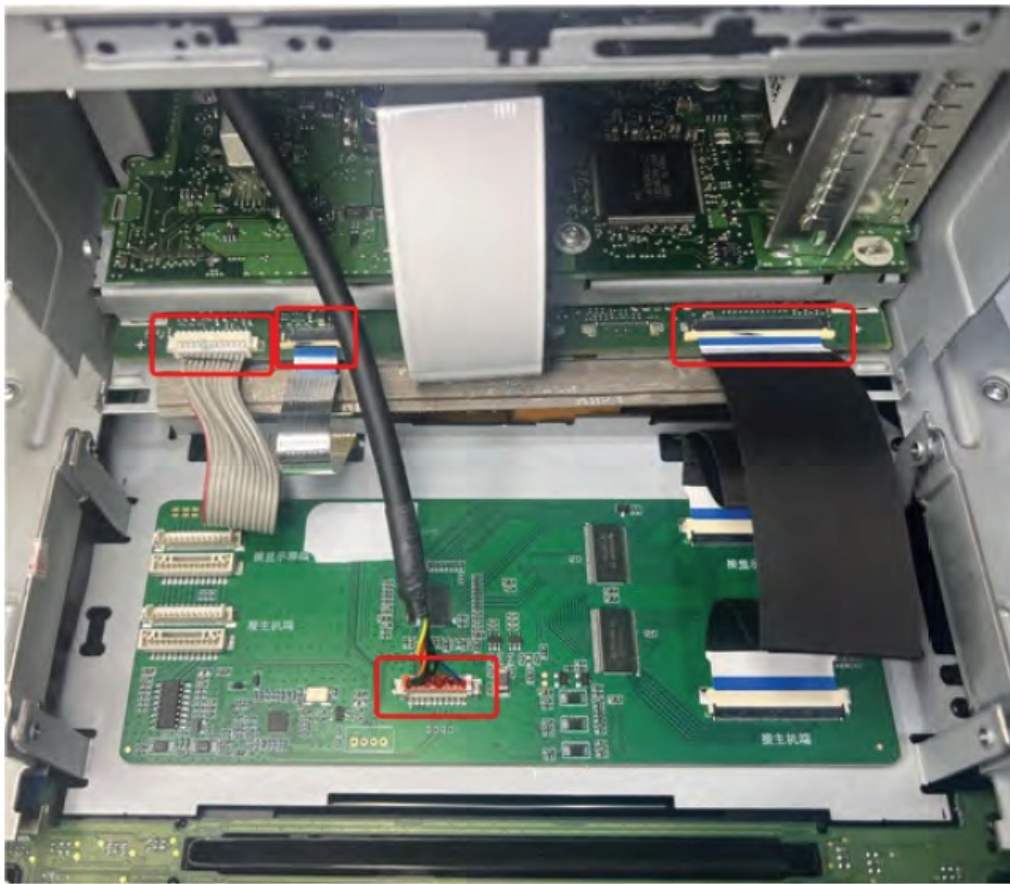


10. Run the provided PCB cable through the hole drilled in the top plate from step 5.

Reconnect (2x) OE cables removed from step 3.



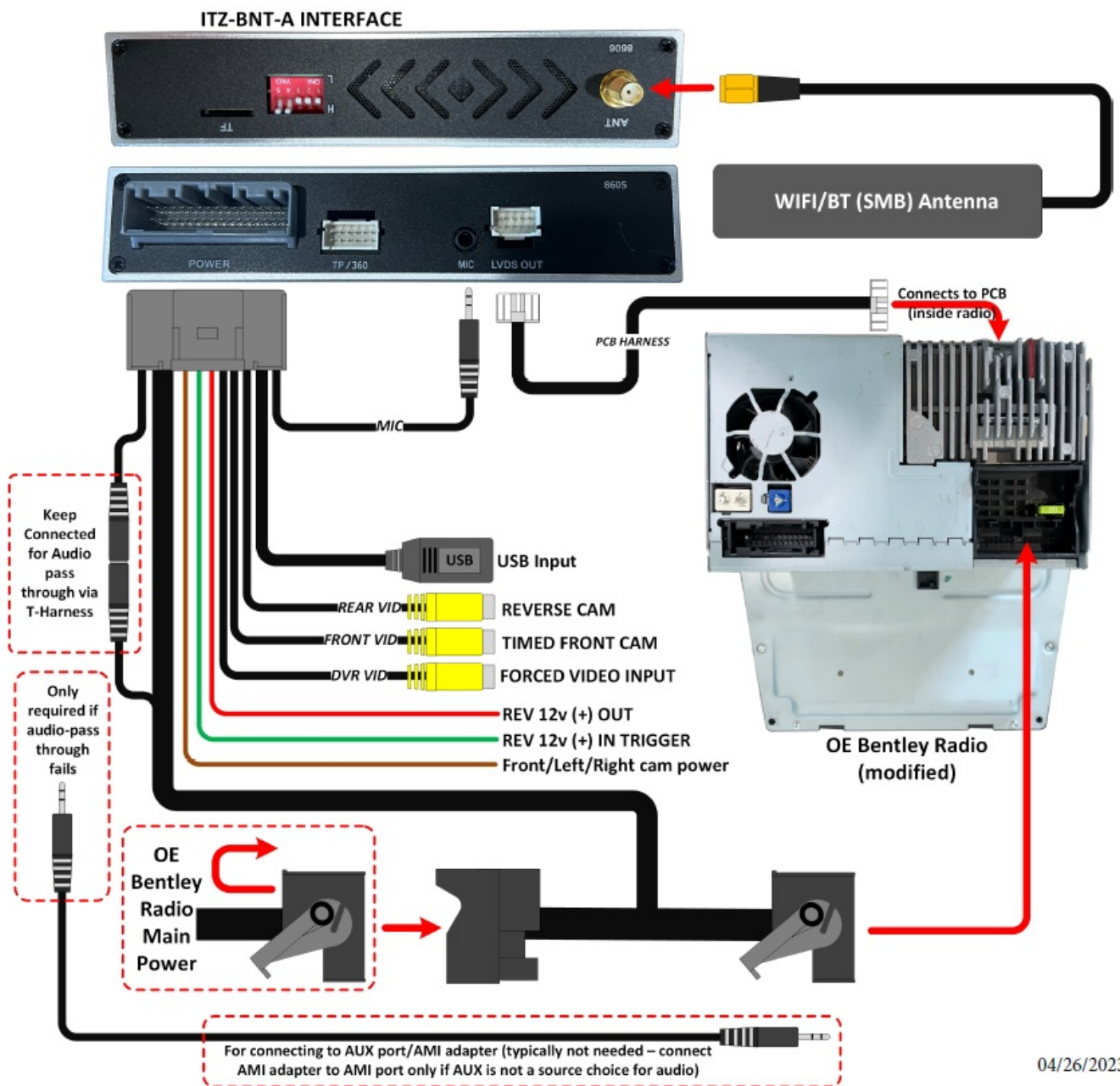
11. Connect the PCB Cable to the middle connector, paying careful attention to plug it in the proper orientation. Connect the lower black ribbon to the radio chassis from the provided PCB. Connect the remaining OE ribbons back to the radio chassis connectors.
12. Re-assemble radio carefully with all screws. See next page for full connection diagram.



Bentley Connection Diagram

NOTES

- The radio must be in 'AUX' mode in order for audio playback through the OE speakers.
- If using (green) reverse wire trigger, 'Reversing Mode' must be set to '12V Active' inside Car Setting menu.
- If adding Aftermarket camera, 'Reversing Camera' must be set to 'Aftermarket Camera' inside Car Setting menu.



04/26/2023

DIP Switch Settings



User Operation

Controlling CarPlay/Android Auto is used fully via the touch screen. NOTE: If after installation there is a problem with touch response, press and HOLD the screen for 12 seconds to calibrate touch screen.

ATTENTION: RADIO MUST BE ON AUX MODE TO HEAR AUDIO FROM CARPLAY THROUGH THE SPEAKERS



Description	1	2	3	4	5
Typical Setting	OFF	OFF	OFF	OFF	ON
Setting only if menu is flashing	OFF	OFF	OFF	OFF	OFF



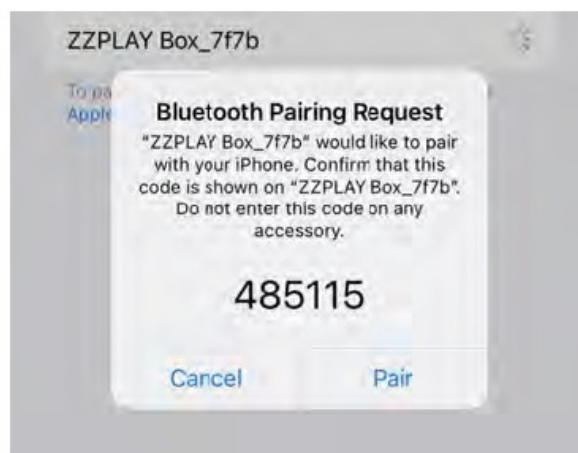
To avoid distortion in audio (while on AUX mode), press 'CAR' button (hard button) > 'System Settings' > 'Media' and under 'External Audio Input', choose 'LOW'.

How to connect to Apple CarPlay / How to setup Bluetooth Phone Calls

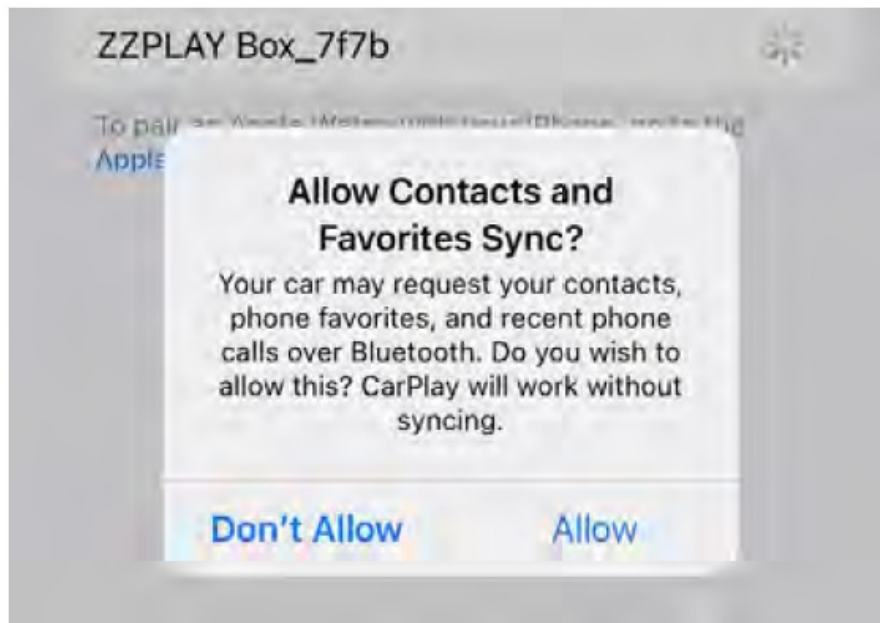
1. If you would like to use a cable to connect your iPhone, please use a certified Apple cable.
2. If you would to use a wireless connectivity, please follow the next steps.
3. Before pairing the iPhone with the system, please make sure you do a "hard reset" on the phone in order to prevent any malfunction. (Check phone manual/online)
4. Once you are done with the previous step go to Settings > Bluetooth and the phone should be able to find a Bluetooth device called ZZPLAY***** under the Other Devices.



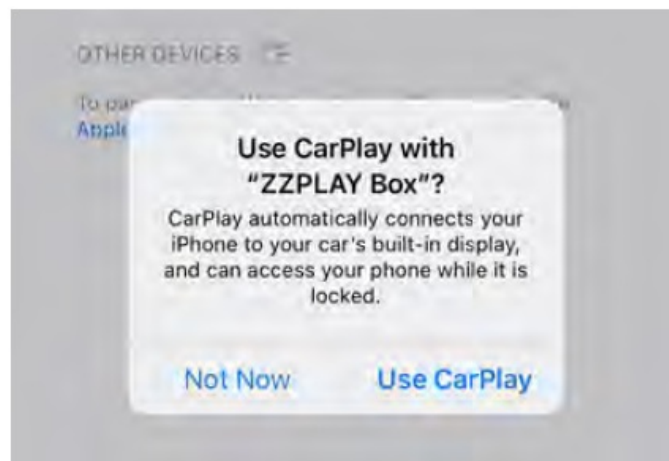
5. Select ZZPLAY***** and a Bluetooth Pairing Request will be displayed on the screen with a code. Select "PAIR".



6. Right after the Pairing notification a new request to Sync your contact with the car will be displayed. Select "ALLOW" in order to have caller ID and access to your contacts through CarPlay.



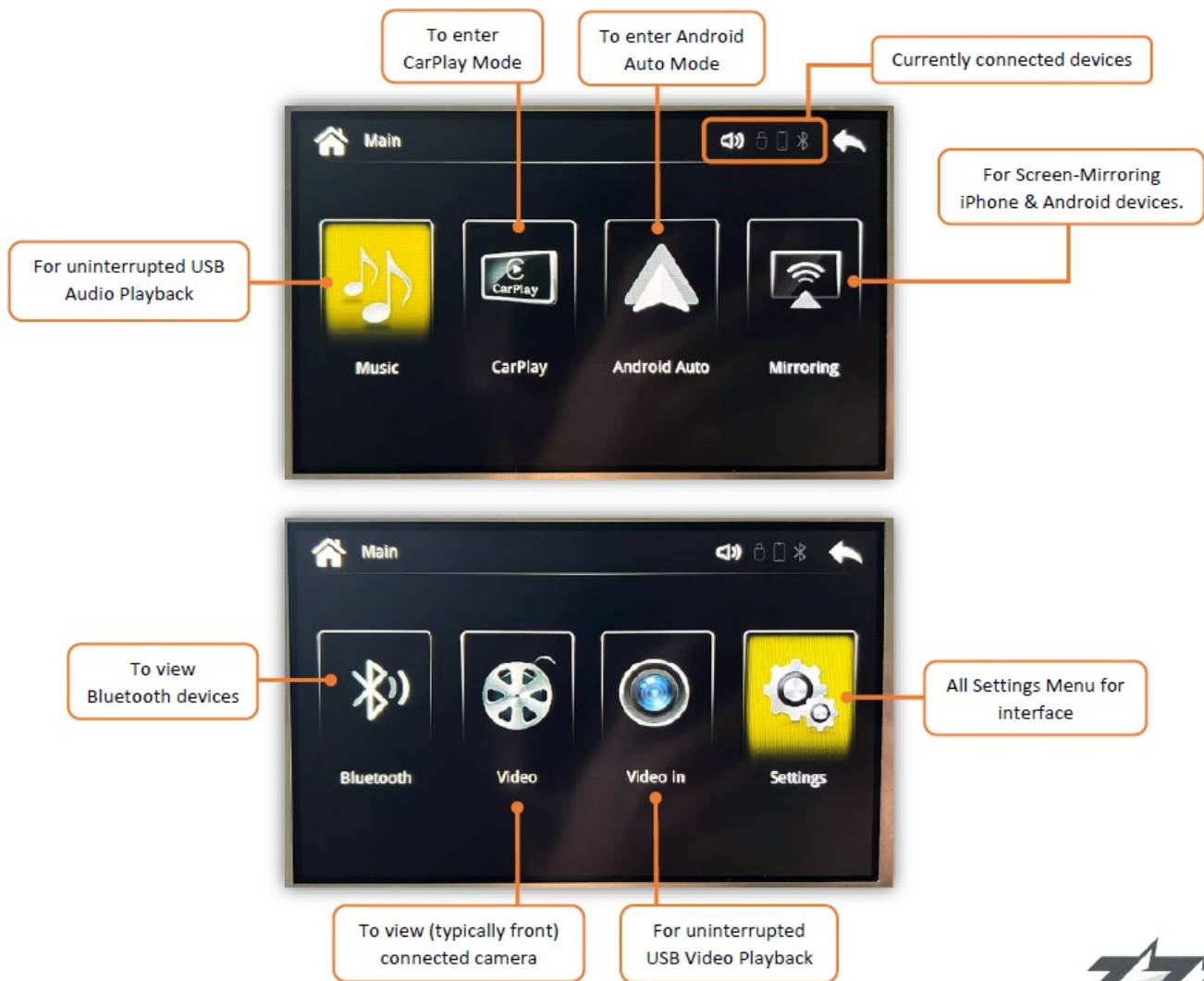
7. A notification asking for a permission to connect your iPhone to the car even when the phone is locked will pop up. Select "Use CarPlay" and the CarPlay main screen should show up on the factory radio screen.



8. When the phone is connected and paired properly, the screen will automatically switch to CarPlay. Once you are in CarPlay mode, if ever necessary, select the ZZ2 app to go to the interface's main menu.

ZZPLAY Interface

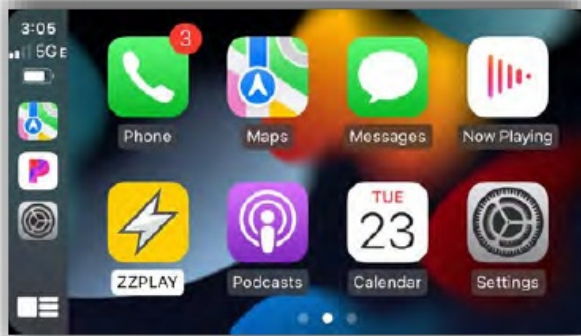
Main Menu



ZZPLAY Interface Settings Menu

The next few pages overview the ZZPLAY interface, navigating settings and explains entering/exiting all menus. There are (2) menu systems that exist outside of the OE radio system: Carplay (or Android Auto) menu and the ZZPLAY Interface Menu. They operate independent of each other (the ZZPLAY Interface menu will function regardless of whether or not a phone is connected to the module). Settings found inside Carplay will only affect CarPlay functionality. Settings for the ZZPLAY Interface control things like reverse camera settings, audio output control settings and other vehicle/interface-specific parameters.

CARPLAY



ZZPLAY INTERFACE MENU



To enter the ZZPLAY Interface Menu from the CARPLAY system, locate the **ZZPLAY** tile and select it. If there is no phone connected, simply using the activation button (which normally brings you into CARPLAY mode) will enter you in the ZZPLAY Interface Menu.



Selecting 'Settings' will bring you to the ZZPLAY Interface Setup Menu with all options pertaining to the specific vehicle and install.



General

Allows adjustments for global volume control and navigation (specific) volume control output. Also there is an option for auto-pairing the user's handset.



Car Setting

Allows adjustments for camera(s) and MIC options. These options are specific to the how the interface handles camera triggers and types (data vs analog wire, OEM vs aftermarket etc). A few other vehicle-specific settings can be found here as well.



Display

Allows adjustments for brightness, contrast & saturation



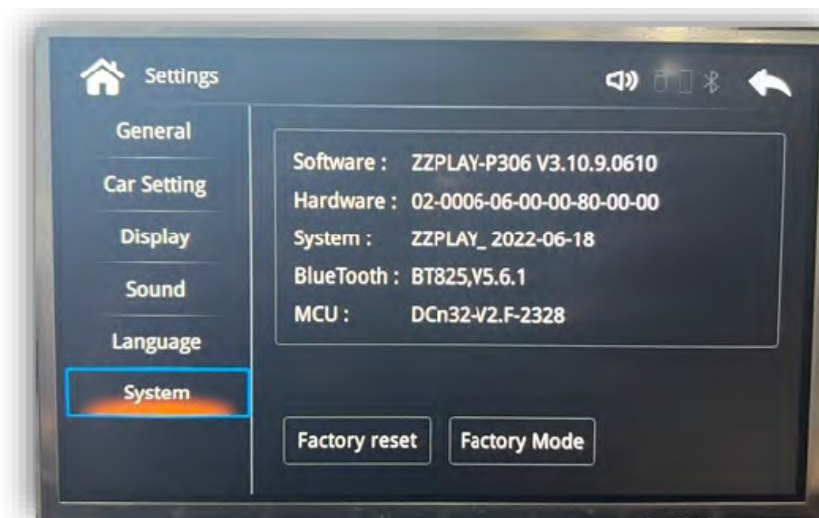
System:

Shows hardware & Software information.

Factory Mode:

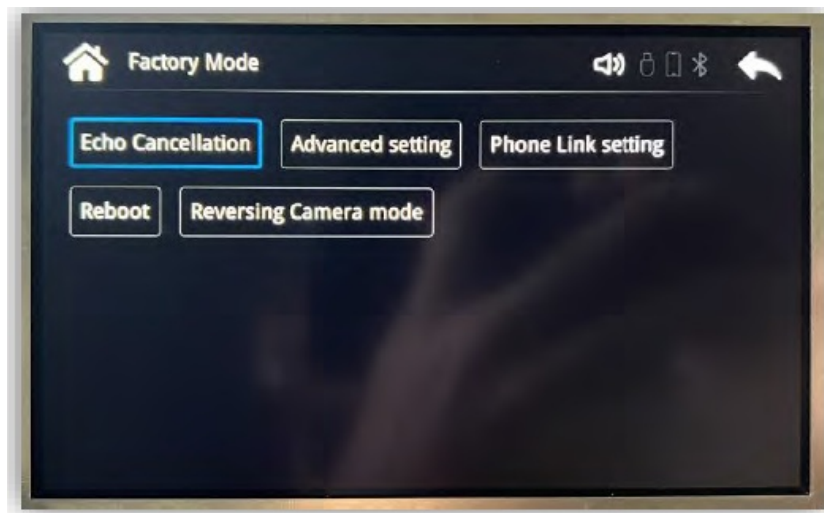
Echo Cancellation: Run this to get the best possible performance out of the provided microphone (if equipped)

•



Advanced Setting: Stores settings that do not need adjustment at this time from end user.

- **Phone** Link Setting: Use these settings if you want a specific type of handset (iPhone vs Android) to be wired only / or wireless only. Helpful for when 2 handsets are in the vehicle at the same time.
- **Reboot:** press to reboot the ZZPLAY system without turning vehicle off.
- **Reversing** Camera Mode: typically does not need adjustment, but adjusts video standard for connected cameras.



Sound:

Allows bass, mid & treble adjustments for audio output.



Phone Link Setting



- support@zz-2.com
- [929-220-1212](tel:929-220-1212)
- Toll free: [877-241-2526](tel:877-241-2526)

- Extension 2: Tech Support

Agreement: End user agrees to use this product in compliance with all State and Federal laws. ZZDOIS LLC dba ZZ-2 is not to be held liable for misuse of its product. If you do not agree, please discontinue use immediately and return product to retailer. This product is intended for off-road use and passenger entertainment only.

FAQ

I can't hear any audio from the CarPlay Android Auto system.

Your OE system must be resting on AUX mode in order to hear any sound from the kit. This includes during phone calls. NOTE: Some systems AUX input are not labeled 'AUX', it may be labeled 'Media Interface' or there may be an audio conversion to the vehicle's USB input. Check with your installer for more information

Sometimes my phone won't connect lately / Sometimes when it connects the screen goes black / Sometimes CarPlay kicks me out back to the interface menu.

For iPhone users, you must perform a 'Hard Reset' on the phone in use on average twice a month to clear certain cache and reset the processors (this will not wipe any data). Google search 'Hard Reset iPhone 13' (or whatever version iPhone version you have) and perform that task. After this is done, you will see a difference in speed and reliability (of pairing/connecting).

Incoming text responses from SIRI are silent on CarPlay. It mutes the audio but I don't hear the read-out.


This often happens for 2 reasons: The iPhone needs a hard-reset (see previous question), or the phone is connected to the vehicle's OE Bluetooth for both phone calls & audio (and the text read-outs are being sent to the vehicle BT source - you're on AUX source). You want to be connected to the vehicle for phone calls ONLY - for iPhone the only way to make this distinction is to adjust the phone setup on the OE

radio side. Find your phone (name) in the Bluetooth or Phone setup in the OEM radio settings and disconnect as an audio player. NOTE: not all vehicles have this option, but it seems to happen mostly with cars that do have this option (Lexus, etc).

Using Android, I cannot get the phone to reliably connect wirelessly (or at all).

Android phones are more finicky and iPhones with their wireless connectivity. Make sure the OS is fully up-to-date. Clear the cache on the Android Auto application. The Android OS must be at least version 11. Some phones (TCL, Motorola) seem to have protocols that don't play nice with every system. If you run into this, use a good USB-C cable for the Android Auto Connection instead.

Documents / Resources

	ZZPLAY ITZ-BNT-A Android Auto Integration [pdf] Installation Guide ITZ-BNT-A Android Auto Integration, ITZ-BNT-A, Android Auto Integration, Auto Integration, Integration
---	--

References

- [User Manual](#)

■ ZZPLAY

◆ Android Auto Integration, Auto Integration, Integration, ITZ-BNT-A, ITZ-BNT-A Android Auto Integration, ZZPLAY

Leave a comment

Your email address will not be published. Required fields are marked *

Comment *

Name

Email

Website

☐ Save my name, email, and website in this browser for the next time I comment.

Post Comment

Search:

e.g. whirlpool wrf535swhz

Search

[Manuals+](#) | [Upload](#) | [Deep Search](#) | [Privacy Policy](#) | [@manuals.plus](#) | [YouTube](#)

This website is an independent publication and is neither affiliated with nor endorsed by any of the trademark owners. The "Bluetooth®" word mark and logos are registered trademarks owned by Bluetooth SIG, Inc. The "Wi-Fi®" word mark and logos are registered trademarks owned by the Wi-Fi Alliance. Any use of these marks on this website does not imply any affiliation with or endorsement.