

---

[Home](#) » [ZZ2](#) » **ZZ2 ZZPLAY ITZ-CCC Advanced CarPlay / Android Auto Integration  
Instruction Manual** 

## **ZZ2 ZZPLAY ITZ-CCC Advanced CarPlay / Android Auto Integration Instruction Manual**



## Contents [ [hide](#) ]

- 1 Kit Components
- 2 CCC Installation Diagram
- 3 DIP Switch Settings
- 4 User Operation
- 5 ZZPLAY Interface Settings Menu
- 6 ZZPLAY Interface Settings Menu
- 7 ITA-CCC FAQ
- 8 Question: I can't hear any audio from the CarPlay/Android Auto system.
- 9 Question: Sometimes my phone won't connect lately / Sometimes when it connects the screen goes black / Sometimes CarPlay kicks me out back to the interface menu.
- 10 Question: Incoming text responses from SIRI are silent on CarPlay. It mutes the audio but I don't hear the read-out.
- 11 Question: Using Android, I cannot get the phone to reliably connect wirelessly (or at all).
  - 11.1 Documents / Resources
    - 11.1.1 References

## Kit Components

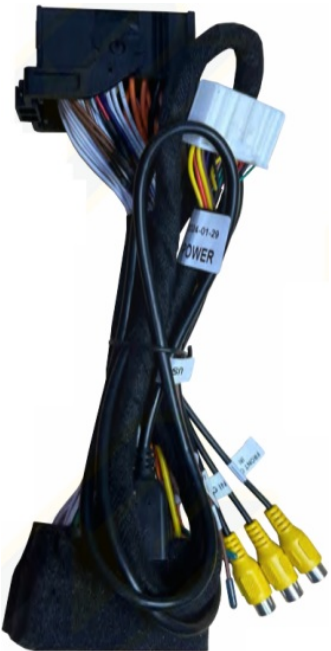
- ZZPlay Interface



- OEM MIC T-Harness



- Main T-Harness



- A/M MIC (optional)



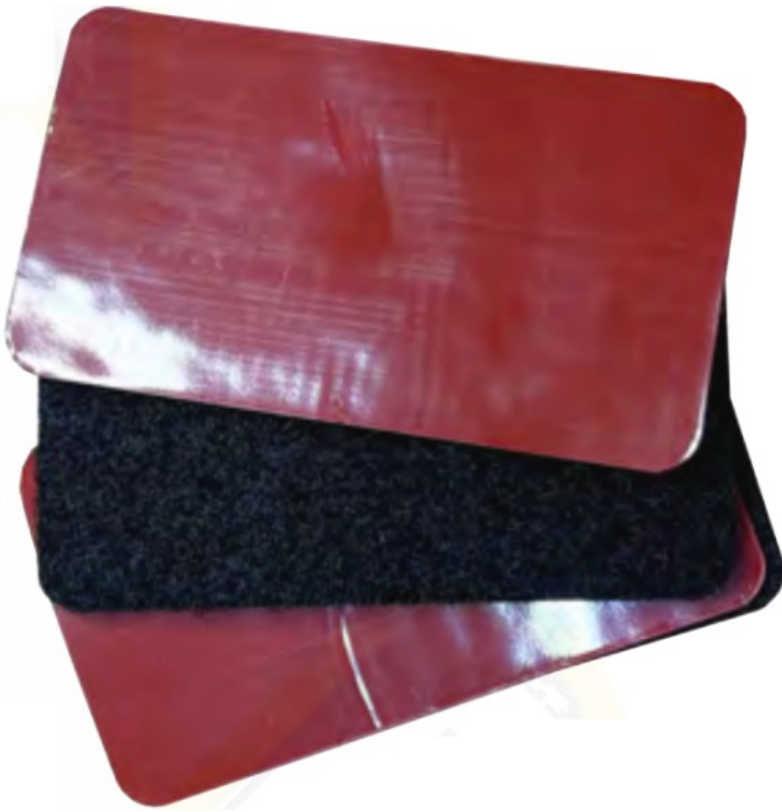
- WIFI Antenna



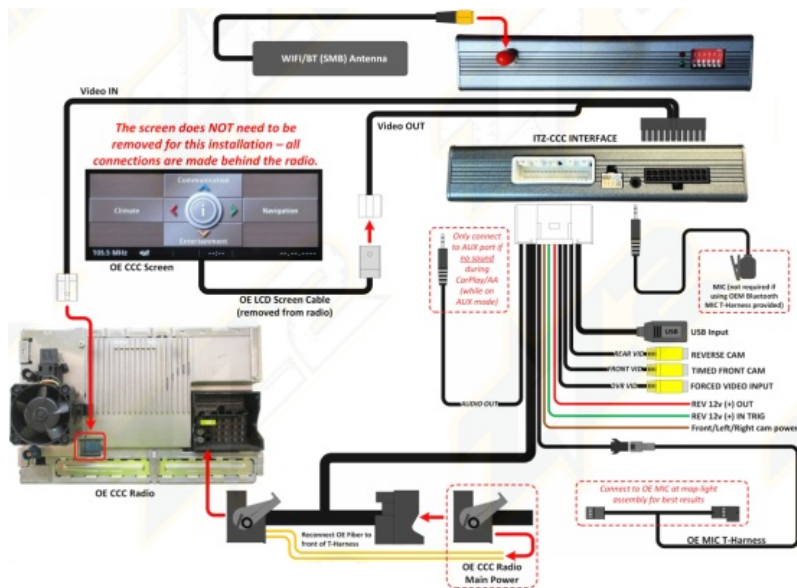
- LVDS Y-Cable



- Mounting Velcro



## CCC Installation Diagram



### Notes:

- Only connect the male AUX plug to the BMW AUX port if you experience no sound during CarPlay/AA playback.
- Make certain the OE FiberOptic cables are removed from the OE radio plug and moved to the radio side of the T-Harness.
- If adding Aftermarket camera, 'Reversing Camera' must be set to 'Aftermarket Camera' inside Car Setting menu.

## DIP Switch Settings

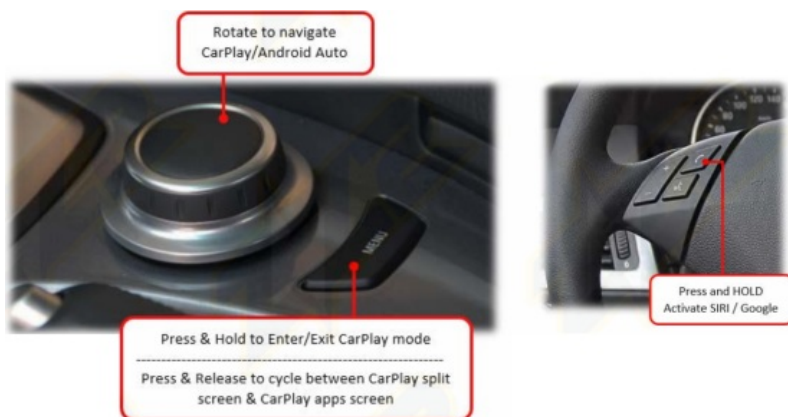


Disconnect power before adjusting dip switches.

1	2	3	4	5	6	Screen Size
OFF	OFF	OFF	OFF	OFF	OFF	8.8", (knob sensitivity 1)
OFF	OFF	ON	OFF	OFF	OFF	8.8", (knob sensitivity 2)
OFF	OFF	OFF	ON	OFF	OFF	6.5", (knob sensitivity 1) ( <i>typical</i> )
OFF	OFF	ON	ON	OFF	OFF	6.5", (knob sensitivity 2) ( <i>typical</i> )
OFF	OFF	OFF	OFF	ON	OFF	6.5", (knob sensitivity 1) (X5)
OFF	OFF	ON	OFF	ON	OFF	6.5", (knob sensitivity 2) (X5)
OFF	OFF	OFF	ON	ON	OFF	6.5", (knob sensitivity 1) (5 <i>series</i> )
OFF	OFF	ON	ON	ON	OFF	6.5", (knob sensitivity 2) (5 <i>series</i> )

**\*NOTE:** most BMW iDrive knobs ***have the dampener*** (detents between rotations)

## User Operation



**ATTENTION:** RADIO MUST BE ON AUX MODE TO HEAR AUDIO FROM CARPLAY THROUGH THE SPEAKERS

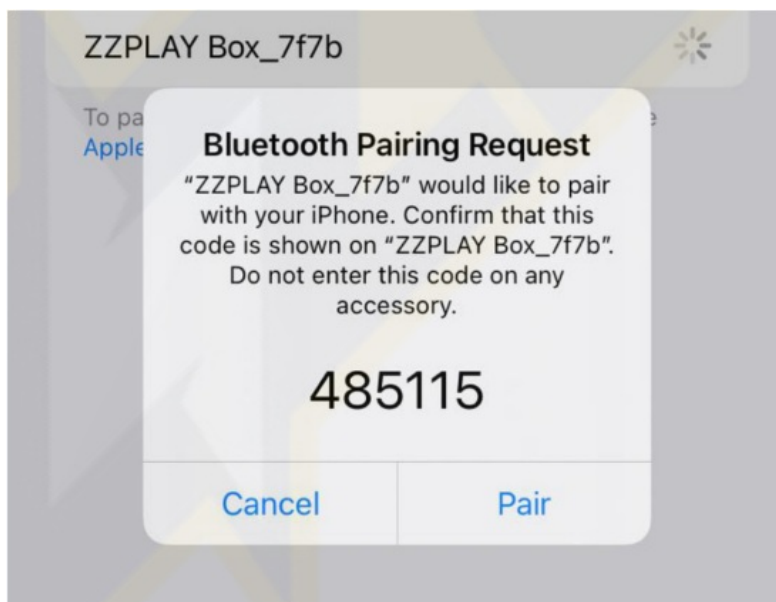


## How to connect to Apple CarPlay / How to setup Bluetooth Phone Calls

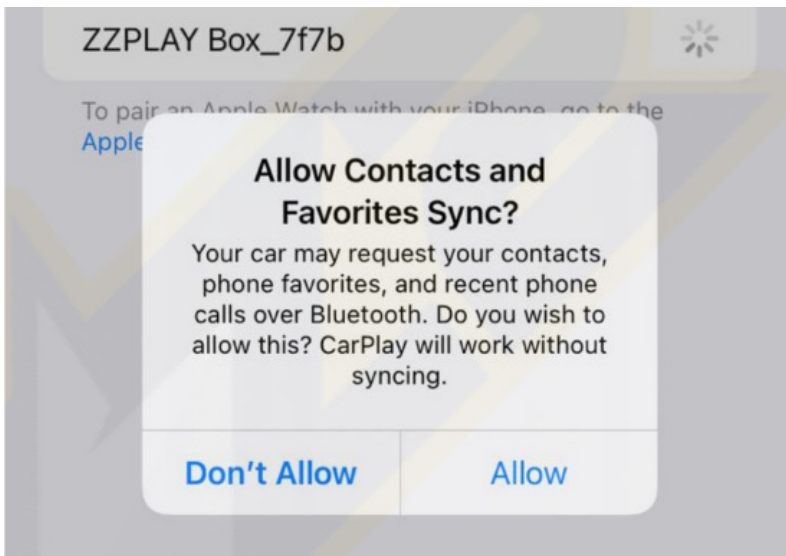
1. If you would like to use a cable to connect your iPhone, please use a certified Apple cable.
2. If you would to use a wireless connectivity, please follow the next steps.
3. Before pairing the iPhone with the system, please make sure you do a “hard reset” on the phone in order to prevent any malfunction. (Check phone manual/online)
4. Once you are done with the previous step go to Settings > Bluetooth and the phone should be able to find a Bluetooth device called ZZPLAY\*\*\*\*\* under the Other Devices.



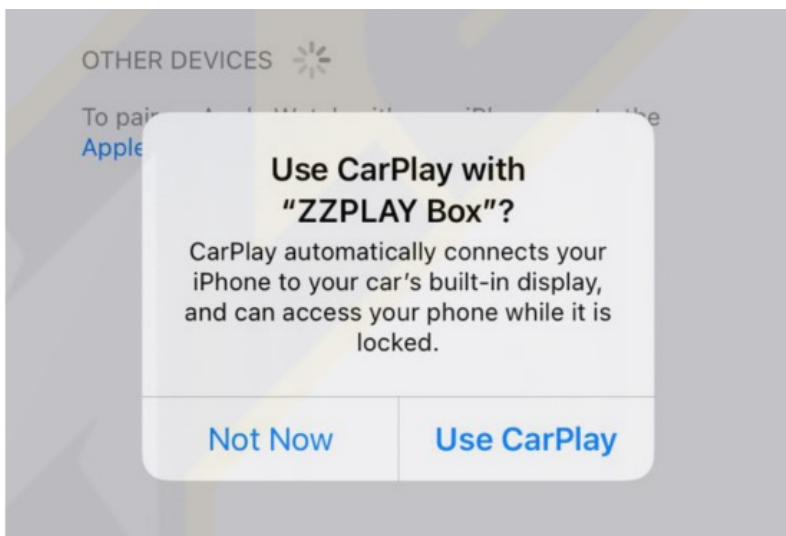
5. Select ZZPLAY\*\*\*\*\* and a Bluetooth Pairing Request will be displayed on the screen with a code. Select “PAIR”.



6. Right after the Pairing notification a new request to Sync your contact with the car will be displayed. Select “ALLOW” in order to have caller ID and access to your contacts through CarPlay



7. A notification asking for a permission to connect your iPhone to the car even when the phone is locked will pop up. Select “Use CarPlay” and the CarPlay main screen should show up on the factory radio screen.



8. When the phone is connected and paired properly, the screen will automatically switch to CarPlay. Once you are in CarPlay mode, if ever necessary, select the ZZ2 app to go to the interface's main menu.

## **ZZPLAY Interface Settings Menu**

The next few pages overview the ZZPLAY interface, navigating settings and explains entering/exiting all menus. There are (2) menu systems that exist outside of the OE radio system: Carplay (or Android Auto) menu and the ZZPLAY Interface Menu. They operate independent of each other (the ZZPLAY

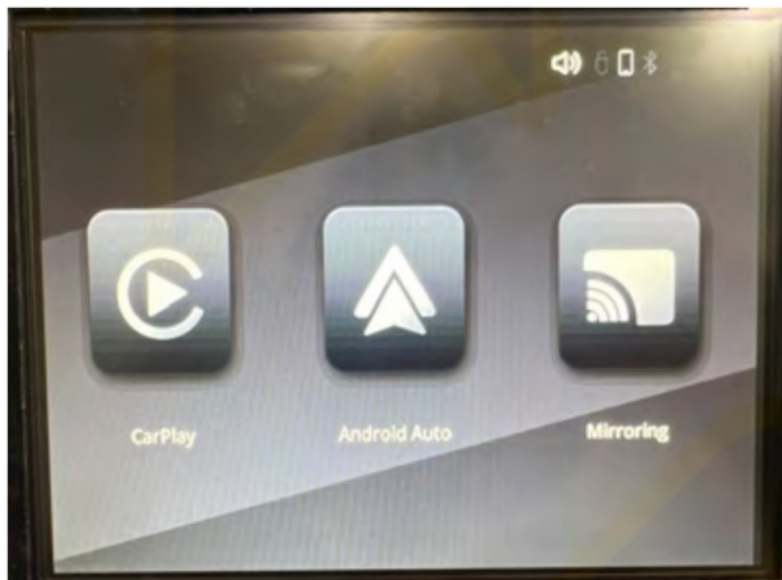


Interface menu will function regardless of whether or not a phone is connected to the module). Settings found inside Carplay will only affect CarPlay functionality. Settings for the ZZPLAY Interface control things like reverse camera settings, audio output control settings and other vehicle/interface-specific parameters.

## CARPLAY



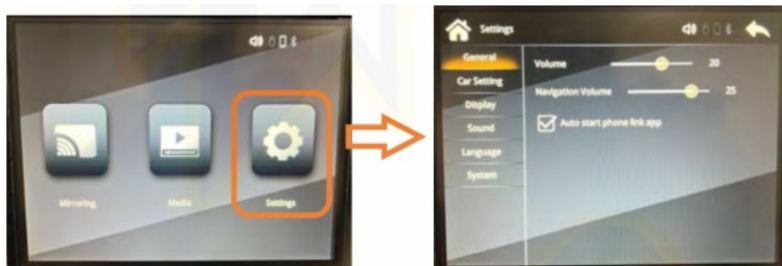
## ZZPLAY INTERFACE MENU



To enter the **ZZPLAY** Interface Menu from the **CARPLAY** system, locate the **ZZPLAY** tile and select it. If there is no phone connected, simply using the activation button (which normally brings you into **CARPLAY** mode) will enter you in the **ZZPLAY** Interface Menu.

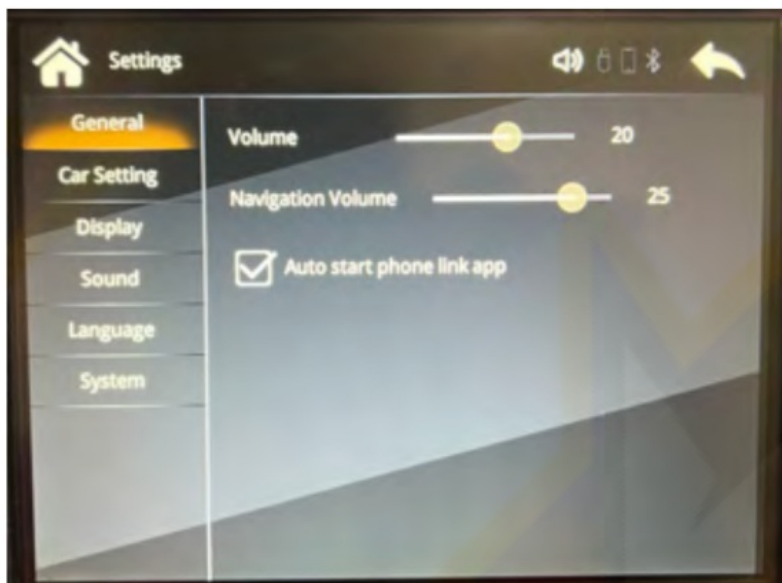


Selecting '**Settings**' will bring you to the ZZPLAY Interface Setup Menu with all options pertaining to the specific vehicle and install.



### **General:**

Allows adjustments for global volume control and navigation (specific) volume control output. Also there is an option for auto-pairing the user's handset.



### **Car Setting:**

Allows adjustments for camera(s) and MIC options.

These options are specific to the how the interface handles camera triggers and types (data vs analog wire, OEM vs aftermarket etc). A few other vehicle-

specific settings can be found here as well.



## ZZPLAY Interface Settings Menu

### Display:

Allows adjustments for brightness, contrast & saturation



### Sound:

Allows bass, mid & treble adjustments for audio output.



## System:

Shows hardware & Software information.



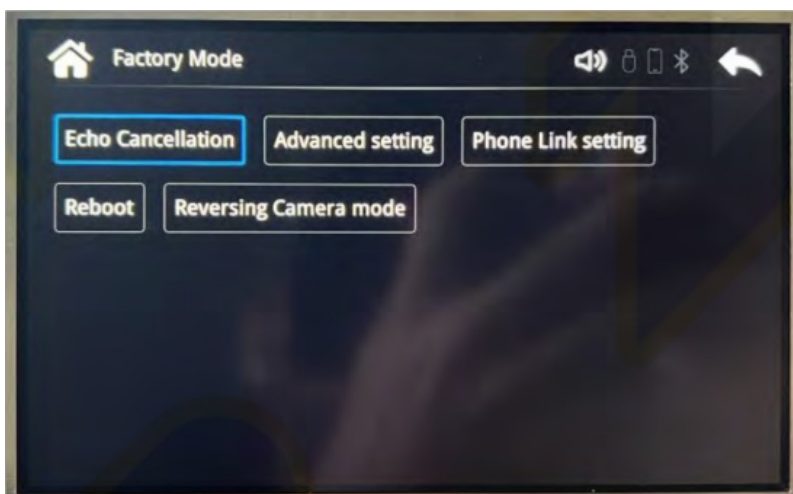
**Factory Mode:** Used for advanced settings Echo Cancellation: Run this to get the best possible performance out of the provided microphone (if equipped) (only for AUX)

**Advanced Setting:** Stores settings that do not need adjustment at this time from end user.

**Phone Link Setting:** Use these settings if you want a specific type of handset (iPhone vs Android) to be wired only / or wireless only.  
Helpful for when 2 handsets are in the vehicle at the same time.

**Reboot:** press to reboot the ZZPLAY system without turning vehicle off.

**Reversing Camera Mode:** typically does not need adjustment, but adjusts video standard for connected cameras.



## ITA-CCC FAQ

---

**Question:** I can't hear any audio from the CarPlay/Android Auto system.

Answer: Your OE system must be resting on AUX mode in order to hear any sound from the kit. This includes during phone calls.

---

**Question: Sometimes my phone won't connect lately / Sometimes when it connects the screen goes black / Sometimes CarPlay kicks me out back to the interface menu.**

Answer: For iPhone users, you must perform a 'Hard Reset' on the phone in use on average twice a month to clear certain cache and reset the processors (this will not wipe any data). Google search 'Hard Reset iPhone 13' (or whatever version iPhone version you have) and perform that task. After this is done, you will see a difference in speed and reliability (of pairing/connecting).

---

**Question: Incoming text responses from SIRI are silent on CarPlay. It mutes the audio but I don't hear the read-out.**

Answer: This often happens for 2 reasons: The iPhone needs a hard-reset (see previous question), or the phone is connected to the vehicle's OE Bluetooth for both phone calls & audio (and the text read-outs are being sent to the vehicle BT source - you're on AUX source). You want to be connected to the vehicle for phone calls ONLY - for iPhone the only way to make this distinction is to adjust the phone setup on the OE radio side. Find your phone (name) in the Bluetooth or Phone setup in the OEM radio settings and disconnect as an audio player. NOTE: not all vehicles have this option, but it seems to happen mostly with cars that do have this option (Lexus, etc).

---

**Question: Using Android, I cannot get the phone to reliably connect wirelessly (or at all).**

Answer: Android phones are more finicky and iPhones with their wireless connectivity. Make sure the OS is fully up-to-date. Clear the cache on the Android Auto application. The Android OS must be at least version 11.



Some phones (TCL, Motorola) seem to have protocols that don't play nice with every system. If you run into this, use a good USB-C cable for the Android Auto Connection instead.

[support@zz-2.com](mailto:support@zz-2.com)

[929-220-1212](tel:929-220-1212)


**Toll free:** [877-241-2526](tel:877-241-2526)

**Extension 2:** Tech Support

**Agreement:** End user agrees to use this product in compliance with all State and Federal laws. ZZDOIS LLC dba ZZ-2 is not to be held liable for misuse of its product. If you do not agree, please discontinue use immediately and return product to retailer. This product is intended for off-road use and passenger entertainment only.



## Documents / Resources

	<p><a href="#">ZZ2 ZZPLAY ITZ-CCC Advanced CarPlay / Android Auto Integration [pdf]</a>   Instruction Manual</p> <p>ZZ-2, ITZ-CCC, ZZPLAY ITZ-CC Advanced CarPlay Android Auto Integration, ZZPLAY ITZ-CC, Advanced CarPlay Android Auto Integration, CarPlay Android Auto Integration, Android Auto Integration, Auto Integration, Integration</p>
---	---

## References

- [User Manual](#)



# Leave a comment

Your email address will not be published. Required fields are marked \*

Comment \*

Name

Email

Website

☐ Save my name, email, and website in this browser for the next time I comment.

**Post Comment**

## Search:

e.g. whirlpool wrf535swhz

**Search**

[Manuals+](#) | [Upload](#) | [Deep Search](#) | [Privacy Policy](#) | [@manuals.plus](#) | [YouTube](#)

This website is an independent publication and is neither affiliated with nor endorsed by any of the trademark owners. The "Bluetooth®" word mark and logos are registered trademarks owned by Bluetooth SIG, Inc. The "Wi-Fi®" word mark and logos are registered trademarks owned by the Wi-Fi Alliance. Any use of these marks on this website does not imply any affiliation with or endorsement.