



---

[Home](#) » [ZZ2](#) » **ZZ2 IT3-LEX1 Series Advanced CarPlay/Android Auto Integration Instruction Manual** 

## Contents [ [hide](#) ]

- [1 ZZ2 IT3-LEX1 Series Advanced CarPlay/Android Auto Integration](#)
- [2 Product Usage Instructions](#)
- [3 Components](#)
- [4 Full Installation Diagram](#)
- [5 Audio Playback Options](#)
- [6 DIP Switch Settings](#)
- [7 Activation by original buttons](#)
- [8 Settings <System>](#)
- [9 FAQ](#)
- [10 Documents / Resources](#)
  - [10.1 References](#)



**ZZ2 IT3-LEX1 Series Advanced CarPlay/Android Auto Integration**



## Specifications:

- **Components:**

- ZPZZPLAY Interface3
- OLD GVIF TYPE
- NEW GVIF TYPE
- Screen Cable
- AV, USB Cable
- ANTENNA
- OLD Type GVIF (LEX15, LEX17 only)
- NEW Type GVIF (LEX19 only)
- High Type Harness LEX15 (only)
- OLD Type Harness LEX17 (only)
- New Type Harness LEX19 (only)

## Product Usage Instructions

### Connection for Joystick vs Touchpad:

If the vehicle is equipped with the Joystick, ensure that the 15H-KT is connected to the joystick. Refer to page 7 for the diagram.

If the vehicle has a Small Touch Pad, make sure that A# is plugged into C# connector as shown in the picture reference.

## **Installation Diagrams:**

### **For IT3-LEX15:**

- You must be in BT Audio or AUX mode for audio playback from CarPlay system.
- Ground the Audio Ground Wire if using AUX for sound in Lexus systems.
- The Screen Correction T-Harness MUST be connected to prevent flickering.
- If the vehicle has a Joystick, install the KT harness and set the option to 'Remote Lever' in Setup.

### **Audio Playback Options:**

To change settings, access the interface main menu ZZPLAY > SETUP. Scroll to the bottom of the list. If 'BT Channel' is missing, update the system by contacting ZZ2.

#### **OPTION 1 (recommended):**

- Use Car's BT Channel (ON) to send CarPlay/AA audio directly to factory radio's Bluetooth stream source.
- Adjusting this feature will reboot the unit once.

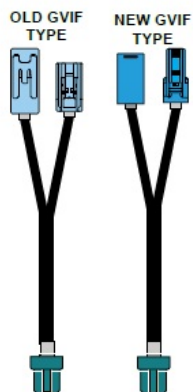
#### **OPTION 2:**

- Use Car's BT Phone (ON) to send CarPlay/AA music to AUX and telephony to factory radio's Bluetooth system for phone calls only.

## **Components**



ZZPLAY Interface



Screen Cable



AV,USB Cable



ANTENNA



OLD Type GVIF  
(LEX15, LEX17 only)



NEW Type GVIF  
(LEX19 only)



High Type Harness  
LEX15 (only)



OLD Type Harness  
LEX17 (only)



New Type Harness  
LEX19 (only)

## IT3-LEX15 Joystick vs Touchpad



If the vehicle is equipped with the Joystick, make sure the 15H-KT is connected to the joystick (Please check page 7 for the diagram)



15H-KT HARNESS

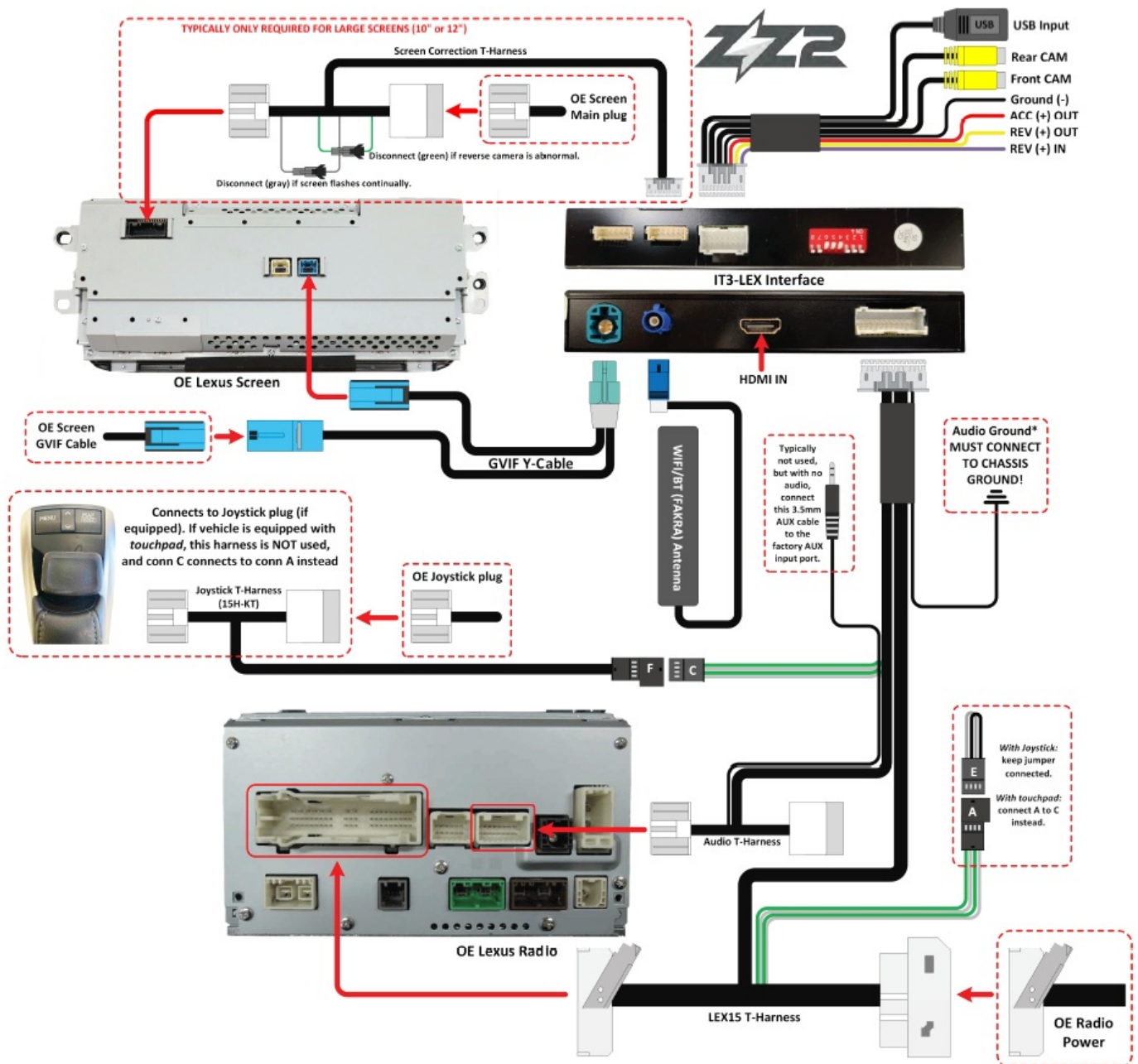


If the vehicle is equipped with the Small Touch Pad, MAKE SURE THE A# IS PLUGGED INTO C# CONNECTOR (check picture for reference)----->



## Full Installation Diagram

### IT3-LEX15



## NOTES:

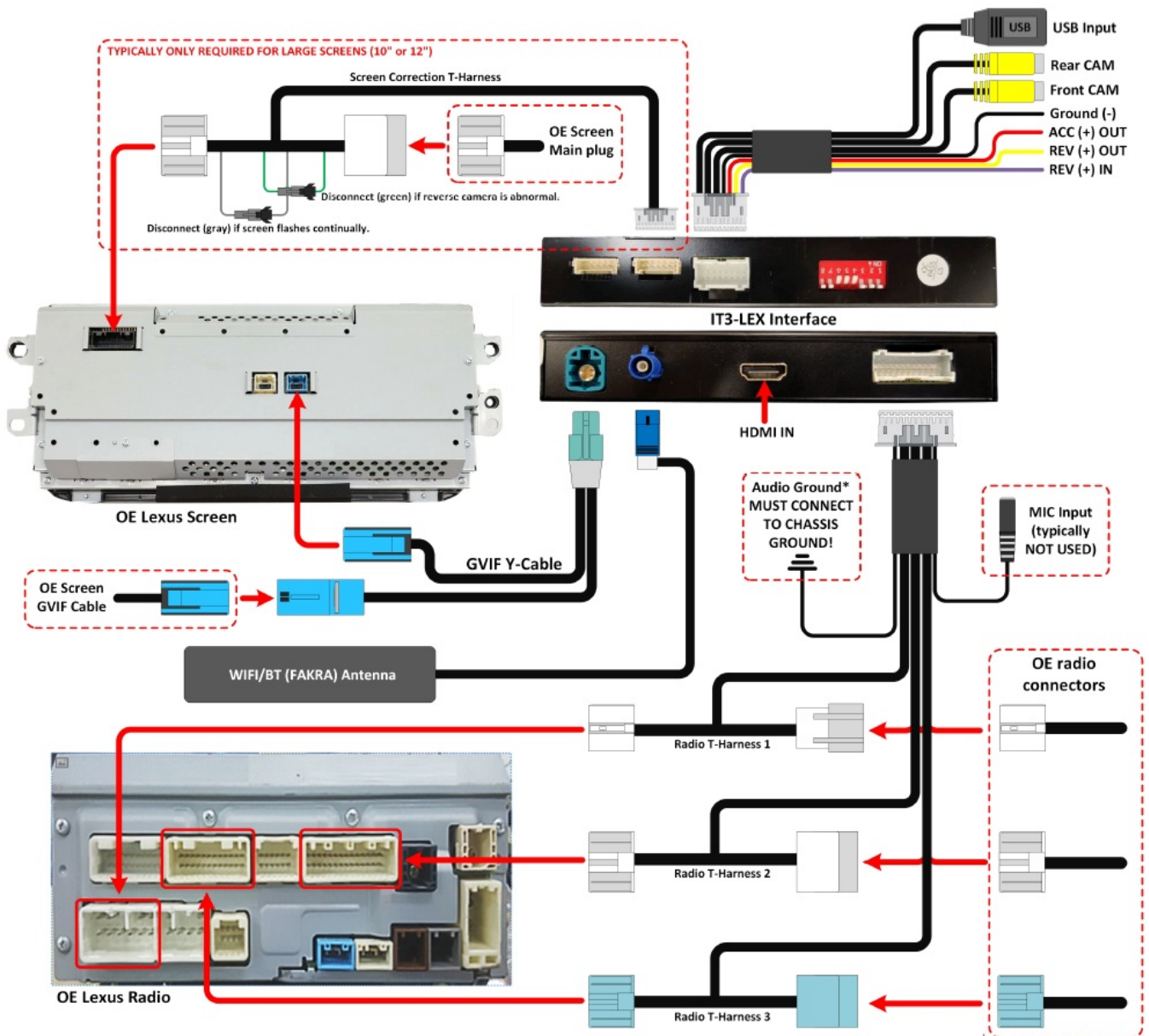
- You must be in BT Audio or AUX mode for audio playback from CarPlay system.
- \*For Lexus systems, typically **MUST** ground the Audio Ground Wire if using AUX for sound.
- The Screen Correction T-Harness **MUST** be connected to the screen or flickering will occur!
- If vehicle has a Joystick, the KT harness must be installed **AND** the option must be set to 'Remote Lever' inside Setup.





**ATTENTION:** With the latest system software (3.6.13+), use OEM Bluetooth streaming (source) for all audio playback from CarPlay/Android Auto.

## IT3-LEX17



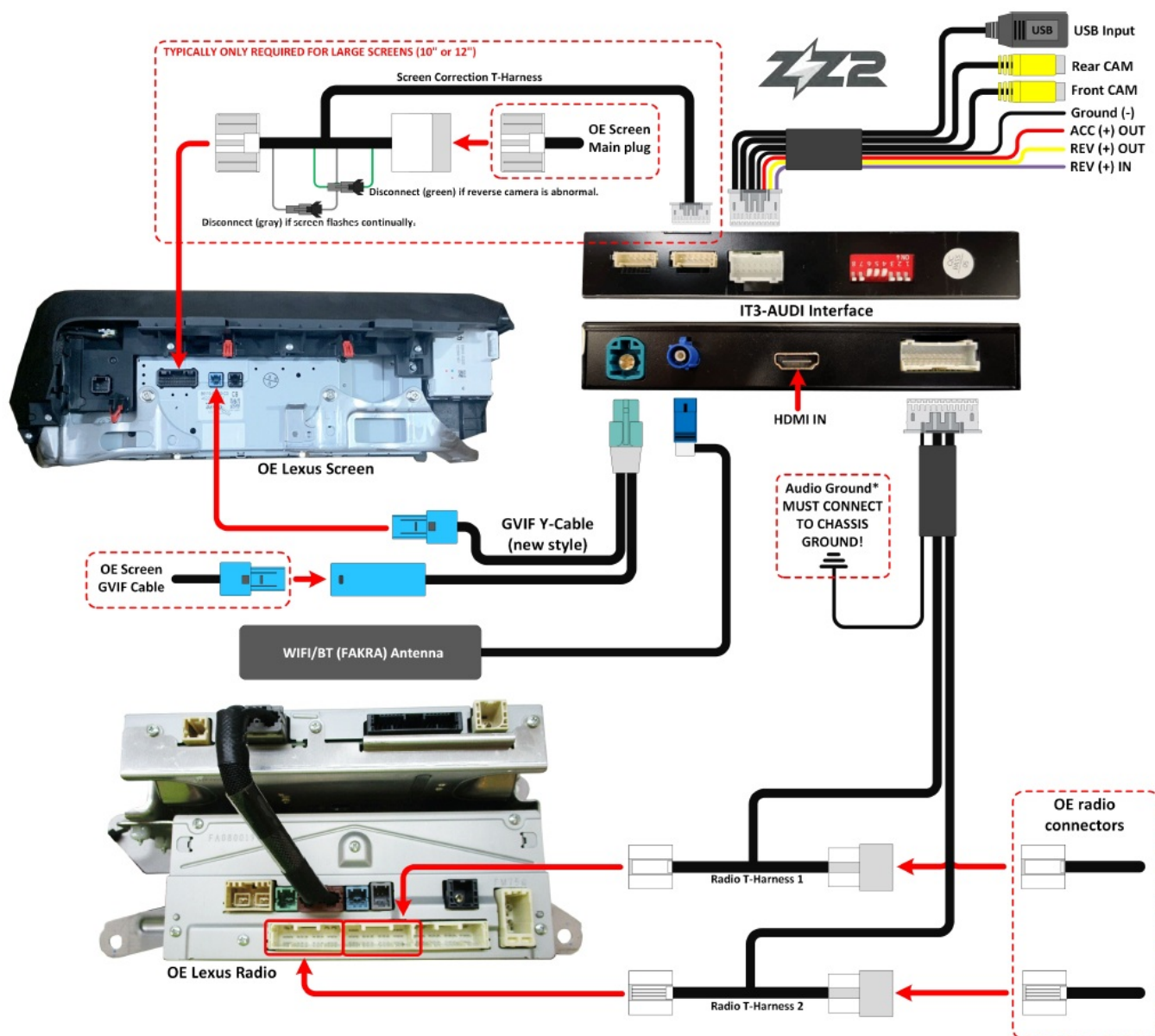
**NOTE**

- You must be in AUX Audio mode for audio playback from CarPlay system.
- \*For Lexus systems, typically MUST ground the Audio Ground Wire if using AUX for audio.
- The Screen Correction T-Harness MUST be connected to the screen or flickering will occur!

**ATTENTION:** With the latest system software (3.6.13+), use OEM Bluetooth streaming (source) for all audio playback from CarPlay/Android Auto.

\*For some IS models, the key-ways may need to be shaved off (BLUE T-Harness)

## IT3-LEX19



**NOTE**

- You must be in AUX Audio mode for audio playback from CarPlay system.
- \*For Lexus systems, typically MUST ground the Audio Ground Wire if using AUX for audio.
- The Screen Correction T-Harness MUST be connected to the screen or flickering will occur!

**ATTENTION:** With the latest system software (3.6.13+), use OEM Bluetooth streaming (source) for all audio playback from CarPlay/Android Auto.

## Audio Playback Options

To change these settings, you must access the interface main menu. Go to ZZPLAY>SETUP and scroll towards the bottom of the list. If 'BT Channel' does not exist, your system is out of date and needs to be updated. Contact ZZ2 for more information.



Use Car's BT Channel (ON):

Sends all CarPlay/AA audio (music & telephony) directly to factory radio's Bluetooth stream source.

### NOTES:

- Not all vehicles will be equipped with Bluetooth streaming – verify before using
- Phone must remain (Bluetooth) connected to the factory radio for phone calls & music
- Use BT Audio source (not AUX!) to hear music from CarPlay/AA
- Adjusting this feature (ON or OFF) will reboot the unit once



### OPTION 2



Use Car's BT Phone (ON): Sends CarPlay/AA music to AUX, but telephony to factory radio's Bluetooth system for phone calls only.

### NOTES:

- Phone must remain (Bluetooth) connected to the factory radio for phone calls only
- Use AUX Input source (not Bluetooth Audio!) to hear music from CarPlay/AA
- Answer incoming phone calls from the steering wheel pickup button for best results
- Place outgoing phone calls using SIRI/Voice command for best results

### OPTION 3



Use Car's BT Channel & Phone (OFF): Sends 100% of the audio from CarPlay/AA to the AUX input – including phone calls.

### NOTES:

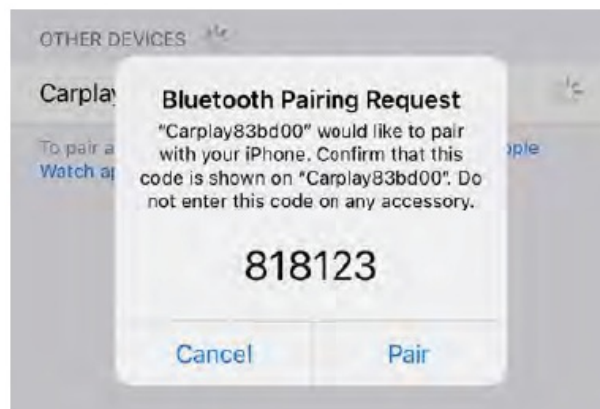
- Connection to factory Bluetooth not required
- May cause echoing during phone calls – MIC settings inside 'AUDIO' section available for adjustment
- Must use this setup for Phone Mirroring feature for sound from phone when mirroring

**How to connect to Apple CarPlay / How to setup Bluetooth Phone Calls**

1. If you would like to use a cable to connect your iPhone, please use a certified Apple cable.
2. If you would to use a wireless connectivity, please follow the next steps.
3. Before pairing the iPhone with the system, please make sure you do a “hard reset” on the phone in order to prevent any malfunction. (Check phone manual/online)
4. Once you are done with the previous step go to Settings > Bluetooth and the phone should be able to find a Bluetooth device called CarPlay8\*\*\*\*\* under the Other Devices.



5. Select CarPlay8\*\*\*\*\* and a Bluetooth Pairing Request will be displayed on the screen with a code. Select “PAIR”.



6. Right after the Pairing notification a new request to Sync your contact with the car will be displayed. Select “ALLOW” in order to have caller ID and access to your contacts through CarPlay.



7. A notification asking for a permission to connect your iPhone to the car even when the phone is locked will pop up. Select “Use CarPlay” and the CarPlay main screen should show up on the factory radio screen.



8. When the phone is connected push and hold the MENU button for 2 seconds to switch to CarPlay. Once you are in CarPlay mode select the ZZPLAY tile to go to the interface's main menu.

## Bluetooth Phone Calls

Please access the Main Menu of the Interface, by selecting the yellow ZZPLAY tile, and then go to SETUP > USING CAR'S BT CHANNEL and make sure that option is ON. After that go back to the main screen and RETURN to CarPlay/Android Auto. On the phone, please make sure the device is paired with the factory LEXUS Bluetooth as well as the ZZPLAY unit.

When using the ZZPLAY system, you must be in Bluetooth Audio source (not AM, FM, AUX or any other source) in order to hear audio from CarPlay/AA. If the vehicle is not factory-equipped with Bluetooth, you must use AUX for the audio source (and BT Channel must be turned OFF).

## DIP Switch Settings

## IT3-LEX17

## IT3-LEX15

## SMALL LARGE IT3-LEX15/LEX19

Twist-Knob Type



Joystick Controller



Touch PAD Type



No.1	No.2	No.5
ON (▼)	OFF(▲)	ON (▼)

No.1	No.2	No.5
ON (▼)	ON (▼)	ON (▼)

No.1	No.2	No.5
ON (▼)	ON (▼)	OFF(▲)

For JOYSTICK, also set menu setting to 'remote lever'

For TOUCHPAD, also set menu setting to 'mini touch pad'

1	2	3	4	5	6	7	8
Controller Type	Controller Type	Resolution (screen size)		Controller Type	KEEP OFF	KEEP OFF	KEEP OFF

3	4	Screen Size
OFF	OFF	7", 8", (10" IS only), <i>(12" only split screens up to 2015)</i>
ON	ON	IS 7" ONLY 2013-2016
OFF	ON	10 or some 12" 2018+
ON	OFF	12" 2016+ ONLY

OFF

ON



ON :

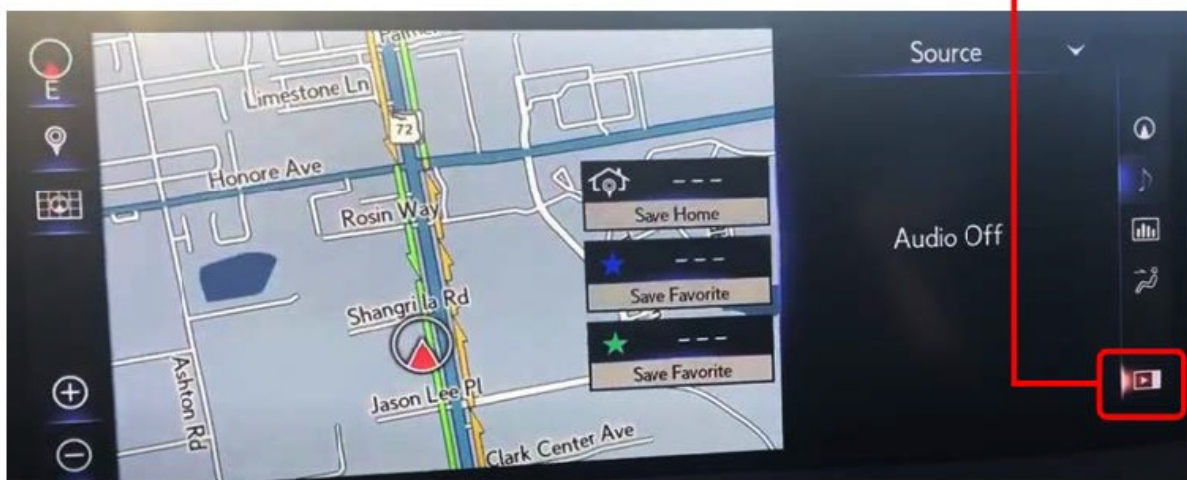


OFF :





If equipped with 10" or 12" screen, the factory Navigation screen can be expanded to full screen (2016+ ONLY!). If this is possible on OEM side, then the interface is also capable of displaying full screen CarPlay / Android Auto. DIP Switch 3 ON or 4 ON *respective to screen size*. Older Lexus vehicles (up to 2015) will not have this capability.



## Activation by original buttons

**ATTENTION:** With the latest system software (3.6.13+), use OEM Bluetooth streaming (source) for all audio playback from CarPlay/Android Auto.










2015 Lexus ES (XV60)



2019 New Lexus ES (XZ10)



2015 CT200 (A10)

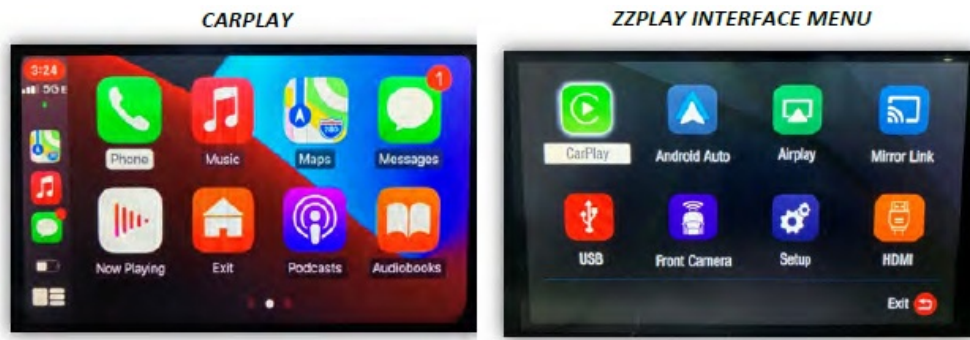
Button	Function	Operation	Remarks
<b>1</b> Menu or <b>MAP*</b>	Changing Modes	Press the button 2 seconds	Order : OEM → <b>Car Play</b>
		Press the button short time	Return to the OEM mode in any modes.
<b>3</b> Joystick Touch pad Dial	Move the pointer	Move the Joystick Turn the dial Touch the pad	Apple Car Play Function 
			Google Android Auto 
<b>3</b> Joystick Touch pad Dial	"Siri"	Press the button 5 seconds	Apple Car Play Function 
<b>2</b> Back	Go back	Press the button short time	Apple Car Play Function 
	Restart	Press the button 10 seconds	Google Android Auto 
			You can use this function when you get in trouble

**\*NOTE:** Older model Lexus vehicles may use MAP instead of MENU to change modes.

## Settings <System>



The next few pages overview the IT3 interface, navigating settings and explains entering/exiting all menus. There are (2) menu systems that exist outside of the OE radio system: CARPLAY (or Android Auto) menu and the ZZPLAY Interface Menu. They operate independent of each other (the ZZPLAY Interface menu will function regardless of whether or not a phone is connected to the module). Settings for CARPLAY will only control CarPlay settings. Settings for the ZZPLAY Interface control things like reverse camera settings, audio output control settings and other vehicle/interface-specific parameters.



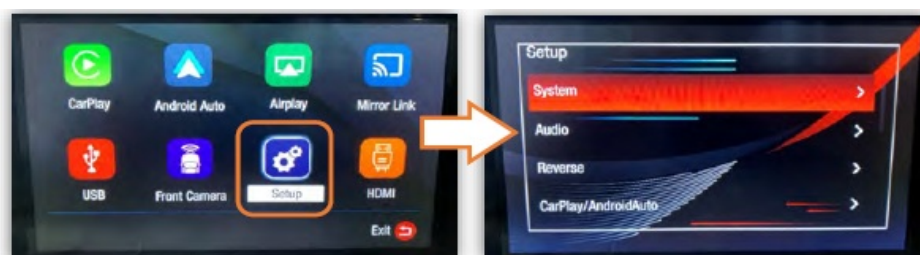
To enter the ZZPLAY Interface Menu from the CARPLAY system, locate the 'Exit' tile and select it. If there is no phone connected, simply using the activation button (which normally brings you into CARPLAY mode) will enter you in the ZZPLAY Interface Menu.



If a phone is paired and you've entered the ZZPLAY Interface Menu, select 'Return to [icon]' to return to CarPlay mode.



Selecting 'Setup' will bring you to the ZZPLAY Interface Setup Menu with all options pertaining to the specific vehicle and install.



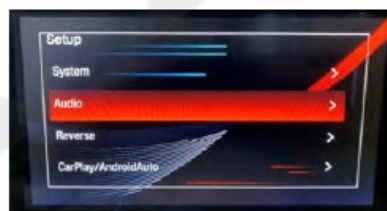
Inside System includes Language, Display options, a Software Update prep mode (USB

Updates – CONTACT US) and System Version information for this module. NOTE: The System Version information screen stores required information when updating the module – take a picture of this if you’re planning to update the unit.



Audio provides audio level controls for the interface:

(Global Vol level, Music, Speech and Alert volumes are all separated out specifically for tuning the interface for the best user experience).



An array of Microphone settings are used specifically when using the provided system microphone. ZZ2 recommends using the OEM Bluetooth system whenever possible for IT3 hardware (and in that case, these settings don't apply). In some cases where the provided microphone is required, follow these steps to reduce echo delay (OR run 'AEC Auto Setup below):

Before beginning, be in AUX mode, someone must be on the phone with you (outside of vehicle) to test, start the car and roll all windows up:

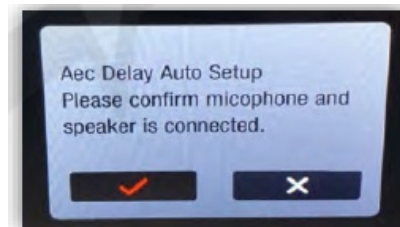




1. Bring Microphone OP (gain) down as low as possible, to the point where you can still hear them clearly (typically 1-3)
2. Start Microphone Delay at 0, bring up 1 detent at a time, testing audibly while you increase this setting (say: 'testing 1, 1, 1, 1', then 'testing 2, 2, 2, 2' as you go, etc). Stop when echo goes away.
3. Re-test the phone call after complete at different (OE) volume levels.



AEC Auto Setup will attempt to run an echo delay test automatically. For this test you cannot be on the phone to begin with, it uses a series of tones to determine how to adjust settings based on the interior of the vehicle.



Reverse configures all camera options, whether aftermarket or OEM.

Reverse Camera should be default set to 'Original' for OE camera, or select 'Aftermarket' if adding a reverse camera.





Reverse Line Detect activates the wire trigger (violet) for reverse camera (used for manual transmissions typically), found on the USB Media Harness. With this feature ON, it may also disable the reverse (over CAN data) command.

Reverse Display Track designates whether or not to display dynamic guidelines on the reverse image (aftermarket cam only).

Reverse Display Radar is only used when the vehicle is equipped with OE reverse sensors (typically it will show a visual radar screen next to the rear camera image screen).

Front View Time sets the length of time an added front camera (to Front RCA input) will show after leaving reverse gear.

Reverse Match Original adjusts the positioning of reverse screen to match original camera location.

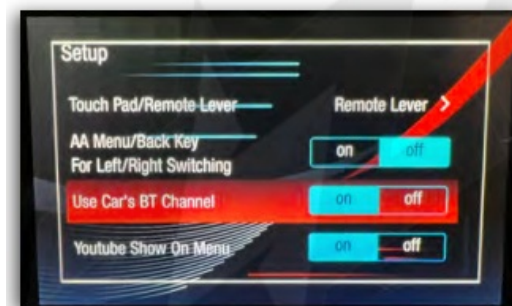
Match 360 Display, or Ignore 360 State (vehicle dependent) relates to any vehicle with multiple cameras. Adjust this show those stitched or side cameras when in CarPlay/AA mode not. This feature is typically OFF.



- Carplay/Android Auto has adjustments for the CarPlay screen positioning (overall) and other rarely used CarPlay/AA screen features.
- Left Scrap shifts the CarPlay/AA screen to the left in small increments.
- Right Scrap shifts the CarPlay/AA screen to the right in small increments.
- Top Scrap shifts the CarPlay/AA screen upwards in small increments.
- Bottom Scrap shifts the CarPlay/AA screen to the downwards in small increments.
- Auto Dark Mode dims the CarPlay/AA screen based on the Phone's current setting (or gets ignored).
- Enable Carplay U/D Key changes certain CAN commands, DO NOT USE THIS FEATURE.



Back in Setup, Wifi Channel (reboot required) sets the WIFI channel used to connect to the phone. If all other factors have been checked (antenna placement, Low Data Mode off, etc) and you're still having wireless connectivity problems:



1. On the phone, reset phone network settings: SETTINGS>GENERAL>RESET>RESET NETWORK SETTINGS
2. On the interface: Set Wifi Channel (reboot required) option to '6', then reboot and test.

Wheel Key Swap will adjust the CarPlay/AA navigation controls from UP=UP to UP=DOWN and from LEFT=LEFT to LEFT=RIGHT. NOTE: this is not supported in every vehicle.

Touch Pad/Remote Lever (Lexus only):

- Mini Touch Pad > For vehicles with TOUCH PAD
- Remote Lever > For vehicles with Joystick
- Using Car's BT Phone: As of SW version 3.6.13, this setting should no longer be used.
- Using Car's BT Channel: As of SW version 3.6.13, this setting should be turned ON for every installation (unless the vehicle does not come equipped with OEM Bluetooth).  
Once turned ON, use OEM

- Bluetooth Audio source for all sound from the ZZPLAY unit. This is how ZZ2 always suggests to use these systems (for IT3 hardware).
- HiCar map confirmation: This setting is never used in N.A. – leave OFF and ignore.

[support@zz-2.com](mailto:support@zz-2.com)

[929-220-1212](tel:929-220-1212)

Toll free: [877-241-2526](tel:877-241-2526) Extension 2: Tech Support

Agreement: End user agrees to use this product in compliance with all State and Federal laws. ZZDOIS LLC dba ZZ-2 is not to be held liable for misuse of its product. If you do not agree, please discontinue use immediately and return product to retailer. This product is intended for off-road use and passenger entertainment only.

Before installation of any ZZ-2 LLC products, users must fully read and understand the manual. By installing and/or using the product you agree to be bound by the following terms and conditions: In no respect shall ZZ-2 LLC incur any liability for any damages, including, but limited to, direct, indirect, special, or consequential damages arising out of, resulting from, or any way connected to the use of ZZ-2 LLC products whether or not based upon warranty, contract, tort, or otherwise; whether or not injury was sustained by persons or property or otherwise; and whether or not loss was sustained from, or arose out of, the results of, the item, or any services that may be provided by ZZ-2 LLC.

## **FAQ**

How do I update the system if 'BT Channel' is missing?

Contact ZZ2 for more information on updating the system.

I can't hear any audio from the CarPlay/Android Auto system.

Your OE system must be resting on BT Audio (if on latest module sw) or AUX mode in order to hear any sound from the kit. This includes during phone calls. NOTE Some systems AUX input are not labeled 'AUX', it may be labeled 'Media Interface'



or there may be an audio conversion to the vehicle's USB input. Check with your installer for more information.

I'm hearing reports of a lot of echo or delayed echo on audio during a phone call. Why is this happening and how can I eliminate this?

This happens when using the OEM AUX input for audio instead of the OEM Bluetooth. When using AUX, the signal path travels through the OEM amplifier, and there is active time-alignment & processing on this audio channel which is the root cause. To avoid this problem, the module must have the latest firmware update (at least 3.6.13), and then inside ZZPLAY setup, turn on 'Using Car's BT Channel'. With this setting active, use factory Bluetooth Audio instead of AUX for all sound from CarPlay/AA.

Sometimes my phone won't connect lately / Sometimes when it connects the screen goes black / Sometimes CarPlay kicks me out back to the interface menu.

For iPhone users, you must perform a 'Hard Reset' on the phone in use on average twice a month to clear certain cache and reset the processors (this will not wipe any data). Google search 'Hard Reset iPhone 13' (or whatever version iPhone version you have) and perform that task. After this is done properly, you will see a difference in speed and reliability (of pairing/connecting).

Incoming text responses from SIRI are silent on CarPlay. It mutes the audio but I don't hear the read-out.

Fix 1 Try a Forced Restart (hard reset, above) Fix 2 Disconnect from CarPlay (may require forgetting the unit entirely).. remain connected to the OEM Bluetooth source. Active SIRI from the phone - while SIRI is responding, turn the volume UP using the phone volume keys as high as required.

Using Android, I cannot get the phone to reliably connect wirelessly (or at all).

Android phones are more finicky and iPhones with their wireless connectivity. Make sure the OS is fully up-to-date. Clear the cache on the Android Auto application. The Android OS must be at least version 11. Some phones (TCL, Motorola) seem to have protocols that don't play nice with every system. If you run into this, use a good USB-C cable for the Android Auto Connection instead.


Can the CarPlay/AA system go full screen (10

Only model year 2017+ Lexus units are able to go full screen. If you return to the OEM Lexus menus, if FM or NAV source are able to go full screen, then the CarPlay/AA image will be able to go full screen when the dip switch is set properly (for 10 or 12

When using the CarPlay/AA system on a joystick & split screen (large screen - typically LS or GS) model, the system controls both the OEM controls and CarPlay/AA simultaneously.

n some model LS and GS, the wiring configuration is different than the majority of the Lexus models. See harness modification page after the diagram to solve this problem.

## Documents / Resources

	<p><a href="#">ZZ2 IT3-LEX1 Series Advanced CarPlay/Android Auto Integration [pdf]</a> In struction Manual</p> <p>IT3-LEX15, IT3-LEX17, IT3-LEX19, IT3-LEX1 Series Advanced CarPlay Android Auto Integration, IT3-LEX1 Series, Advanced CarPlay Android Au to Integration, CarPlay Android Auto Integration, Android Auto Integration, Auto Integration, Integration</p>
---	--

## References

- [User Manual](#)

■ ZZ2

◆ Advanced CarPlay-Android Auto Integration, Android Auto Integration, Auto Integration, CarPlay-Android Auto Integration, Integration, IT3-LEX1 Series, IT3-LEX1 Series Advanced CarPlay Android Auto Integration, IT3-LEX15, IT3-LEX17, IT3-LEX19, ZZ2

---

## Leave a comment

Your email address will not be published. Required fields are marked \*

Comment \*

Name

Email

Website

☐ Save my name, email, and website in this browser for the next time I comment.

**Post Comment**

**Search:**

**Search**

[Manuals+](#) | [Upload](#) | [Deep Search](#) | [Privacy Policy](#) | [@manuals.plus](#) | [YouTube](#)

This website is an independent publication and is neither affiliated with nor endorsed by any of the trademark owners. The "Bluetooth®" word mark and logos are registered trademarks owned by Bluetooth SIG, Inc. The "Wi-Fi®" word mark and logos are registered trademarks owned by the Wi-Fi Alliance. Any use of

these marks on this website does not imply any affiliation with or endorsement.