



# ZZ-2 ITZALFAA Wireless CarPlay and Android Auto Interface Instruction Manual

[Home](#) » [ZZ-2](#) » ZZ-2 ITZALFAA Wireless CarPlay and Android Auto Interface Instruction Manual 

## Contents

- [1 ZZ-2 ITZALFAA Wireless CarPlay and Android Auto Interface Instruction Manual](#)
- [2 Components](#)
- [3 Radio Removal \(Stelvio\)](#)
- [4 ALFA Installation Diagram](#)
- [5 How to connect to Apple CarPlay / How to setup Bluetooth Phone Calls](#)
- [6 ZZPLAY Interface Settings Menu](#)
- [7 ZZPLAY Interface Settings Menu](#)
- [8 ITZ-ALFA FAQ](#)
- [9 Read More About This Manual & Download PDF:](#)
- [10 Documents / Resources](#)
  - [10.1 References](#)

## ZZ-2 ITZALFAA Wireless CarPlay and Android Auto Interface Instruction Manual



### Components



### Radio Removal (Stelvio)

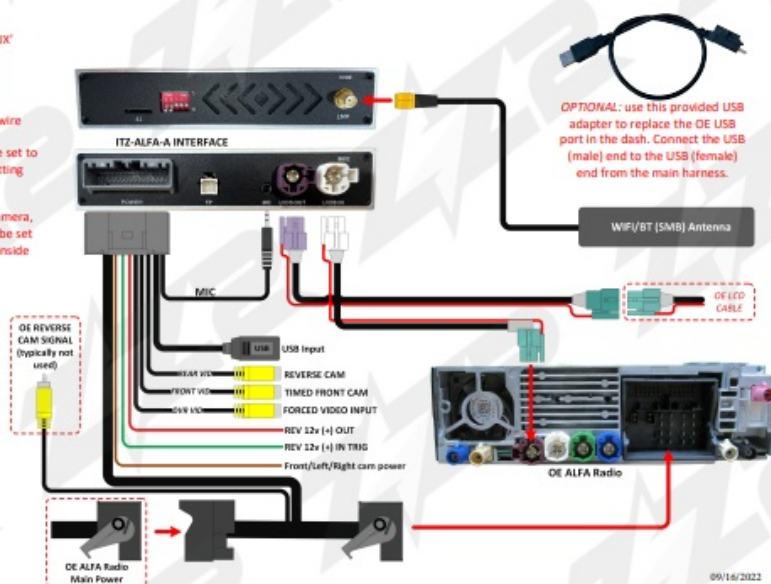
The entire ITZ-ALFA-A installation is performed at the radio tuner module, which is located on the driver's side, behind the knee bolster (directly above the OBD2 port) on both the Guilia and Stelvio. You must remove the beauty panel above the gas pedal & brake to access it. The radio is mounted vertically and secured with (2x) Torx 25 bolts. To make it easier to access the connectors, remove the pocket shown here (below).






## ALFA Installation Diagram

### Notes:

- The radio must be in 'AUX' mode in order for audio playback through the OE speakers.
- If using (green) reverse wire trigger, 'Reversing Mode' must be set to '12V Active' inside Car Setting menu.
- If adding Aftermarket camera, 'Reversing Camera' must be set to 'Aftermarket Camera' inside Car Setting menu.





ON :  OFF : 

1	2	3	4	5	Screen Size
OFF	ON	ON	OFF	OFF	8.8" Screen
OFF	ON	ON	ON	OFF	6.5" Screen

Disconnect power before adjusting dip switches.

## DIP Switch Settings



ON :  OFF : 

1	2	3	4	5	Screen Size
OFF	ON	ON	OFF	OFF	8.8" Screen
OFF	ON	ON	ON	OFF	6.5" Screen

Disconnect power before adjusting dip switches.

## User Operation

**ATTENTION:  
RADIO MUST  
BE ON AUX  
MODE TO  
HEAR AUDIO  
FROM  
CARPLAY  
THROUGH THE  
SPEAKERS**

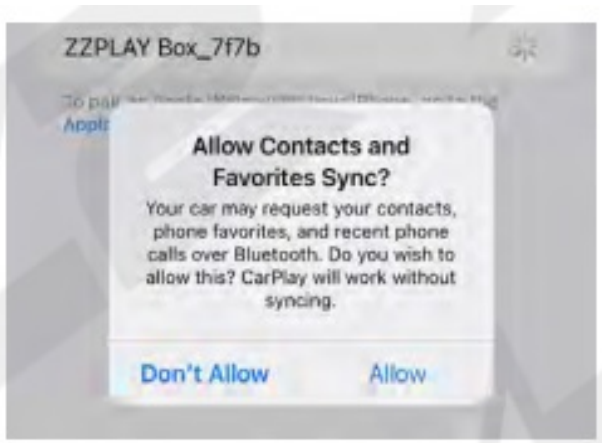


## How to connect to Apple CarPlay / How to setup Bluetooth Phone Calls

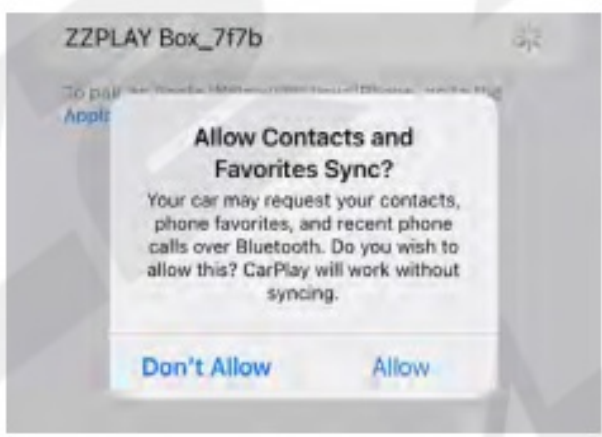
1. If you would like to use a cable to connect your iPhone, please use a certified Apple cable.
2. If you would like to use a wireless connectivity, please follow the next steps.
3. Before pairing the iPhone with the system, please make sure you do a "hard reset" on the phone in order to prevent any malfunction. (Check phone manual/online)
4. Once you are done with the previous step go to Settings > Bluetooth and the phone should be able to find a Bluetooth device called ZZPLAY\*\*\*\*\* under the Other Devices



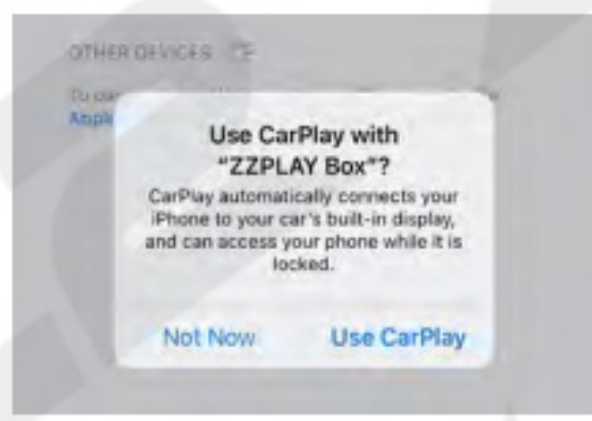
5. Select ZZPLAY\*\*\*\*\* and a Bluetooth Pairing Request will be displayed on the screen with a code. Select "PAIR".



6. Right after the Pairing notification a new request to Sync your contact with the car will be displayed. Select "ALLOW" in order to have caller ID and access to your contacts through CarPlay.



7. A notification asking for a permission to connect your iPhone to the car even when the phone is locked will pop up. Select "Use CarPlay" and the CarPlay main screen should show up on the factory radio screen.



8. When the phone is connected and paired properly, the screen will automatically switch to CarPlay. Once you are in CarPlay mode, if ever necessary, select the ZZ2 app to go to the interface's main menu.

## ZZPLAY Interface Main Menu



## ZZPLAY Interface Settings Menu

The next few pages overview the ZZPLAY interface, navigating settings and explains entering/exiting all menus. There are (2) menu systems that exist outside of the OE radio system: Carplay (or Android Auto) menu and the ZZPLAY Interface Menu. They operate independent of each other (the ZZPLAY Interface menu will function regardless of whether or not a phone is connected to the module). Settings found inside Carplay will only affect Carplay functionality. Settings for the ZZPLAY Interface control things like reverse camera settings, audio output control settings and other vehicle/interface-specific parameters



## ZZPLAY Interface Settings Menu



## ITZ-ALFA FAQ

Question: I can't hear any audio from the CarPlay/Android Auto system.

Answer: Your OE system must be resting on AUX mode in order to hear any sound from the kit. This includes during phone calls. NOTE: Some systems AUX

input are not labeled 'AUX', it may be labeled 'Media Interface' or there may be an audio conversion to the vehicle's USB input. Check with your installer for more information.

Question: I'm hearing reports of a lot of echo or delayed echo on audio during a phone call. Why is this happening and how can I eliminate this?

Answer: This happens because we are using the OEM AUX input for audio, and the AUX path travels through the OEM amplifier, where there is active timealignment & processing on this audio channel. There are a few ways to fix this problem, and there are Pros & Cons to each choice:

1. Use the OE Bluetooth system to handle all phone calls, and answer all incoming phone calls from the steering wheel, always. To dial out using this method, you must use SIRI or voice command activation (typically hold control knob down for 4 seconds). Some vehicles, when using the CarPlay/AA control in recent calls, the system will still use the OE Bluetooth to handle phone calls, but not all vehicles will operate this way. NOTE: This method will sound the best for both parties on the phone call – to use this method, you MUST be paired to the OEM Bluetooth system simultaneously with the ZZPLAY unit. PROs: sounds the best, and regardless of what audio source you're currently on, using this method will switch to a 'phone call state' and return you back to the source you were on (FM, AUX, etc) once the call is ended. CONs: Your phone must connect to both the ZZPLAY unit and the OE Bluetooth for every drive, and the reliability of these connections happening properly upon every startup will be lower (only about 90% vs 100%).
2. Use the built-in 'AEC Auto Setup', or 'Call Quality Test', or 'Echo Cancellation' tests to adjust MIC settings for the microphone input of the ZZPLAY unit. These tests are found in the ZZPLAY setup menu typically under 'Audio' or somewhere similar. Some vehicles require a level of adjustment which will never be achieved, in these cases use the OE Bluetooth system (see choice 1). PROs: If this method works, it is the most reliable way of using the kit. CONs: You MUST be on AUX in order to hear the person you're speaking with. IE: if you use FM or SAT, while using the visual from CarPlay (maps, for example) and a phone call comes in, you must switch to AUX mode before you will hear the person when you answer the call.

This is very cumbersome which is why we suggest to stay connected to the OE Bluetooth and allow the car to handle the phone calls.

Question: Sometimes my phone won't connect lately / Sometimes when it connects the screen goes black / Sometimes CarPlay kicks me out back to the interface menu.

Answer: For iPhone users, you must perform a 'Hard Reset' on the phone in use on average twice a month to clear certain cache and reset the processors (this will not wipe any data). Google search 'Hard Reset iPhone 13' (or whatever version iPhone version you have) and perform that task. After this is done, you will see a difference in

speed and reliability (of pairing/connecting).

Question: Incoming text responses from SIRI are silent on CarPlay. It mutes the audio but I don't hear the read-out.

Answer: This often happens for 2 reasons: The iPhone needs a hard-reset (see previous question), or the phone is connected to the vehicle's OE Bluetooth for both phone calls & audio (and the text read-outs are being sent to the vehicle BT source – you're on AUX source). You want to be connected to the vehicle for phone calls ONLY – for iPhone the only way to make this distinction is to adjust the phone setup on the OE radio side. Find your phone (name) in the Bluetooth or Phone


setup in the OEM radio settings and disconnect as an audio player. NOTE: not all vehicles have this option, but it seems to happen mostly with cars that do have this option (Lexus, etc).

Question: Using Android, I cannot get the phone to reliably connect wirelessly (or at all).

Answer: Android phones are more finicky and iPhones with their wireless connectivity. Make sure the OS is fully up-to-date. Clear the cache on the Android Auto application. The Android OS must be at least version 11. Some phones (TCL, Motorola) seem to have protocols that don't play nice with every system. If you run into this, use a good USB-C cable for the Android Auto Connection instead.

## ***Read More About This Manual & Download PDF:***

### **Documents / Resources**

	<a href="#">ZZ-2 ITZALFAA Wireless CarPlay and Android Auto Interface</a> [pdf] Instruction Manual ITZALFAA, ITZ-ALFA-A, ITZALFAA Wireless CarPlay and Android Auto Interface, ITZALFAA, W ireless CarPlay and Android Auto Interface, CarPlay and Android Auto Interface, Android Auto I nterface, Auto Interface, Interface
------------------------------------------------------------------------------------	----------------------------------------------------------------------------------------------------------------------------------------------------------------------------------------------------------------------------------------------------------------------------------------------------------------------------------------

### **References**

- [User Manual](#)

#### Manuals+, Privacy Policy

This website is an independent publication and is neither affiliated with nor endorsed by any of the trademark owners. The "Bluetooth®" word mark and logos are registered trademarks owned by Bluetooth SIG, Inc. The "Wi-Fi®" word mark and logos are registered trademarks owned by the Wi-Fi Alliance. Any use of these marks on this website does not imply any affiliation with or endorsement.