

ZYXEL
ZYXEL WBE510D
Dual Radio
Unified Access
Point



ZYXEL WBE510D Dual Radio Unified Access Point User Guide

[Home](#) » [ZYXEL](#) » ZYXEL WBE510D Dual Radio Unified Access Point User Guide 

Contents

- [1 ZYXEL WBE510D Dual Radio Unified Access Point](#)
- [2 Hardware Installation](#)
- [3 Management Options](#)
- [4 Direct Management with the Web Configurator](#)
- [5 Mounting Options](#)
- [6 Desk Placement](#)
- [7 Support Information](#)
- [8 Documents / Resources](#)
 - [8.1 References](#)
- [9 Related Posts](#)

ZYXEL

ZYXEL WBE510D Dual Radio Unified Access Point



Video Tutorials

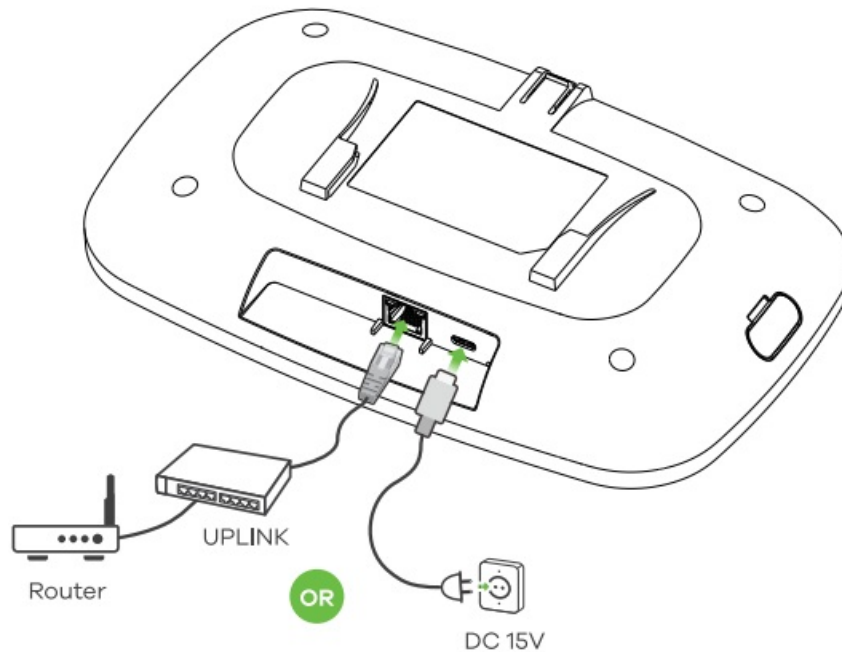
Onboarding the Zyxel Access Point to Cloud with the Nebula Web



Hardware Installation

Connect the UPLINK port to a router with Internet access. If you are not using PoE, connect the Zyxel Device power plug to an appropriate power source.

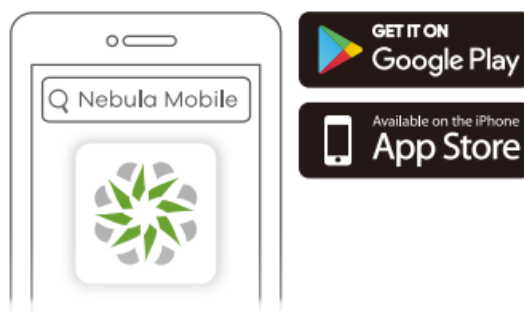
Wait until the LED
blinks green



Management Options

Nebula Management with the App

Use the Zyxel Nebula Mobile app to register the Zyxel Device with the Nebula Control Center (NCC) using the QR code.



Where to find the QR code:

Web Configurator or **Label on the device**



Download and open the Zyxel Nebula Mobile app. Log in with your Zyxel Account. Create an organization and site or select an existing site. Scan the Zyxel Device's QR code to add it to the site. (You can find the QR code in its web configurator or on a label on the device or its box.)

Note: The Zyxel Device will go into cloud management mode automatically after it is registered to a site.

<https://nebula.zyxel.com>

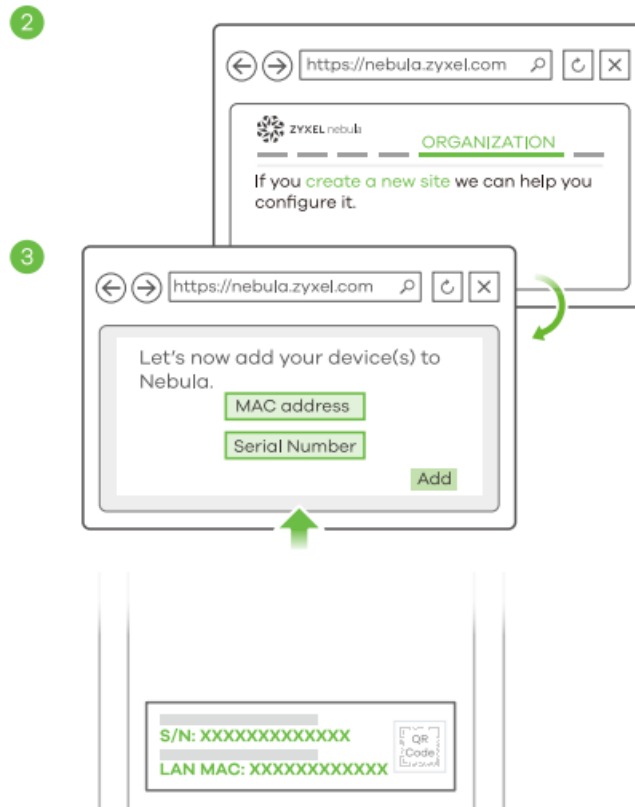
Nebula Management with the Web Portal

1. Use the Zyxel Nebula portal to register the Zyxel Device with the Nebula Control Center (NCC) using the MAC address and serial number.
- 2.



Create an organization and a site (network) in the NCC. Enter the Zyxel Device's LAN MAC address and serial number (S/N) (see the label on the device) in the NCC configuration screen.

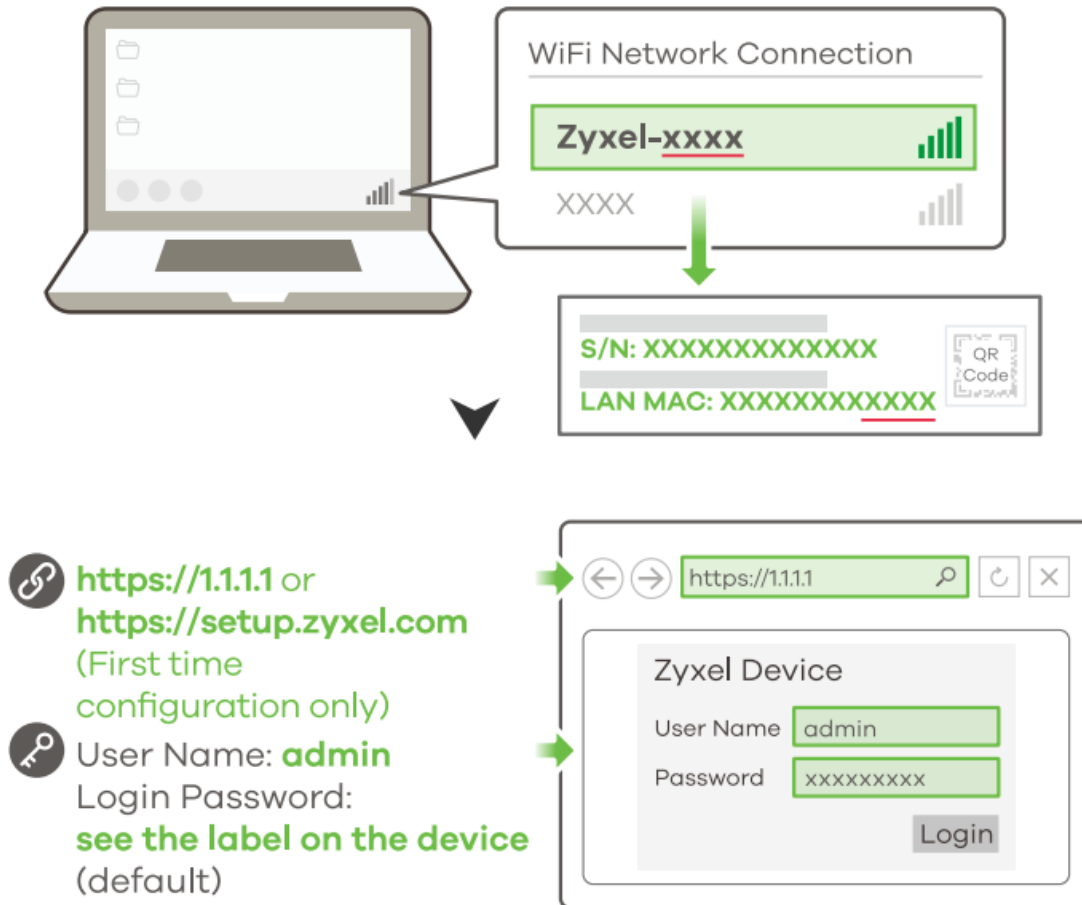
Note: The Zyxel Device will go into cloud management mode automatically after it is registered to a site. See the NCC User's Guide for more information about configuring the Zyxel Device through the NCC.



Direct Management with the Web Configurator

Use the web configurator to directly manage the Zyxel Device.

1-a WiFi connection



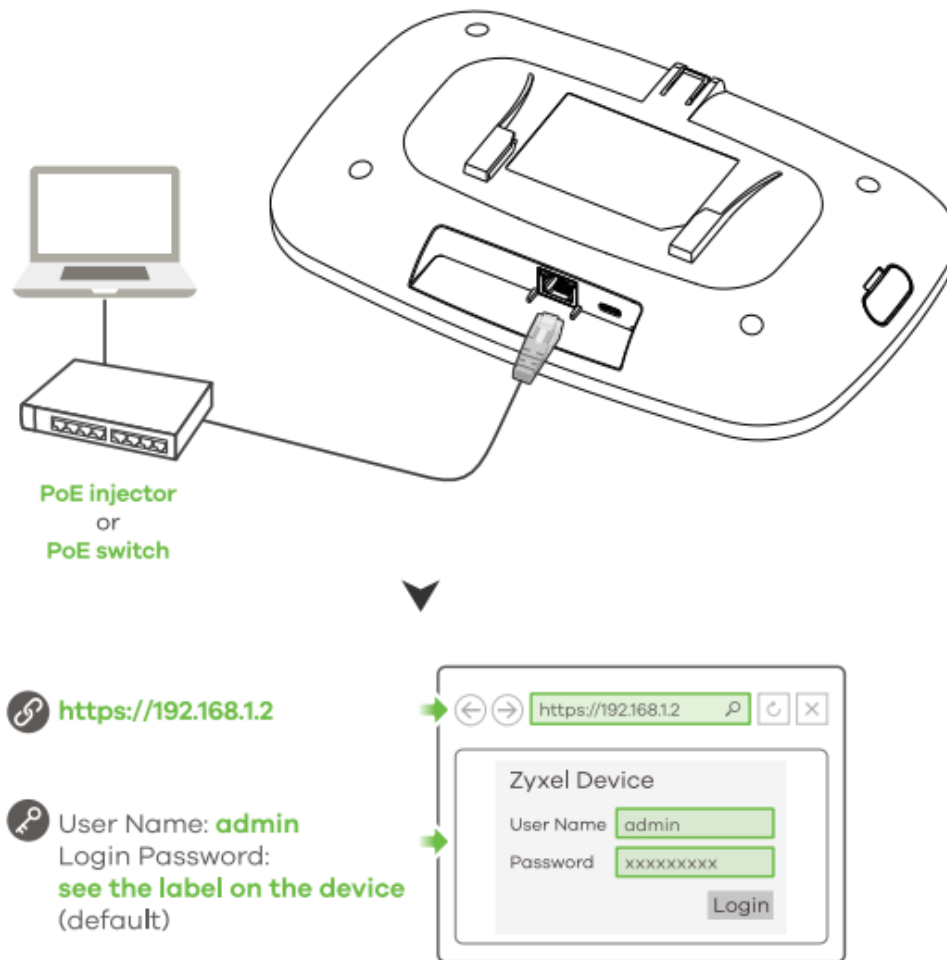
<https://1.1.1.1> or <https://setup.zyxel.com> (First time configuration only)

User Name: admin Login Password: see the label on the device (default)

From a WiFi enabled computer, search for the Zyxel Device's default WiFi network name (Zyxel-xxxx, where xxxx is the last four characters of the MAC address) and connect to it. Open your web browser and enter "<https://1.1.1.1> <https://setup.zyxel.com> for initial configuration. Enter the default user name (admin) and password (see the label on the device). Click Login.

Note: If the Zyxel Device cannot connect to the Internet, use the DHCP-assigned IP address of the Zyxel Device to access its web configurator. Check the connected router or DHCP server for the IP address of the Zyxel Device.

Wired connection



1. Use an Ethernet cable to connect your computer to the UPLINK port of the Zyxel Device through a PoE injector or Poe switch.
Use its DHCP-assigned IP or default static IP address “<https://192.168.1.2>” to access the web configurator.
Make sure your computer IP address is in the same subnet as the Zyxel Device's.
2. The wizard appears automatically. Use the wizard to set up your Zyxel Device. Note: It takes 1 to 2 minutes to apply your wizard changes. The LED turns steady blue if you change the Zyxel Device default settings and the WiFi is on.
3. Use the Zyxel Device's new wireless settings (SSID and PSK) to re-connect to the Zyxel Device's WiFi network for Internet access if you change them in the wizard (or log in to the web configurator when the Zyxel Device is using a WiFi connection). The LED turns steady green when WiFi clients connect to the Zyxel Device. Note: The 1.1.1.1 setup.zyxel.com is for initial setup only. It is not usable after the Zyxel Device is configured. Note: Check the Dashboard screen and note down the Zyxel Device's IP address in case you need to access its web configurator again

2

Wizard setting

ZYXEL Zyxel Device

SSID:

☒ PSK

Secret:

Prev Next Cancel

Note 1

SSID (WiFi Network Name):

PSK (WiFi Password):

DASHBOARD Zyxel Device

Interface Status Summary

Name	IP Addr/Netmask
XXX	X.X.X.X / X.X.X.X

Note 2

Current IP Address:

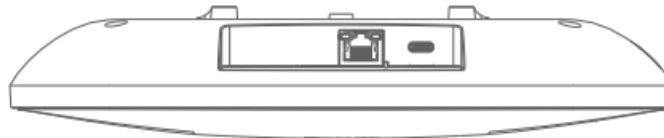
3

**Note 1**

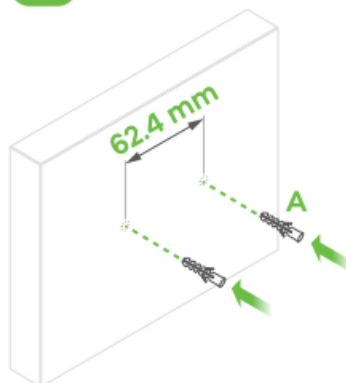
Mounting Options

Wall / Ceiling Mounting

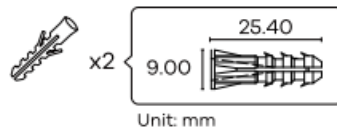
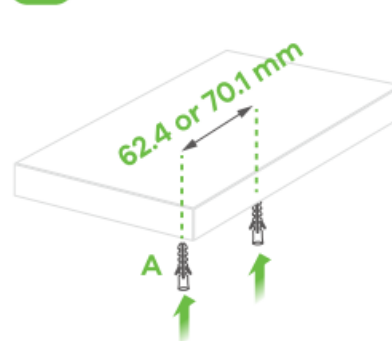
The mounting kit is for wall or ceiling mounting. You need to choose how you want to mount your Zyxel Device first.



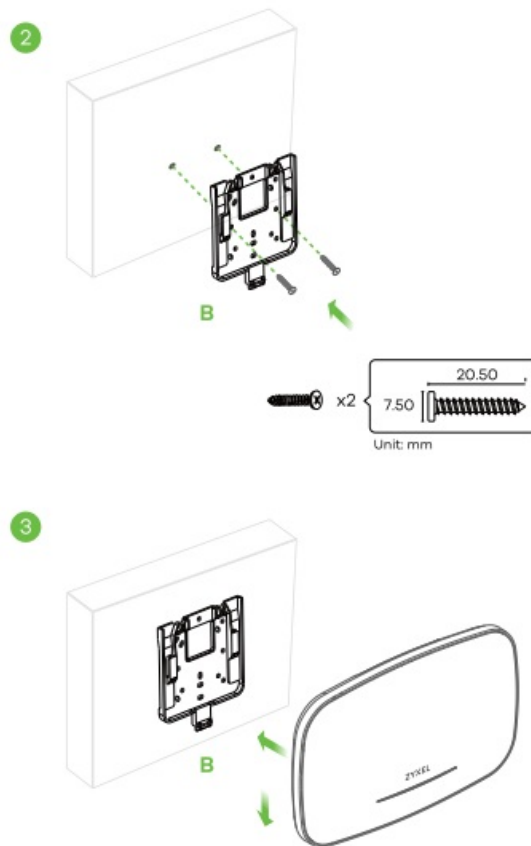
1-a



1-b



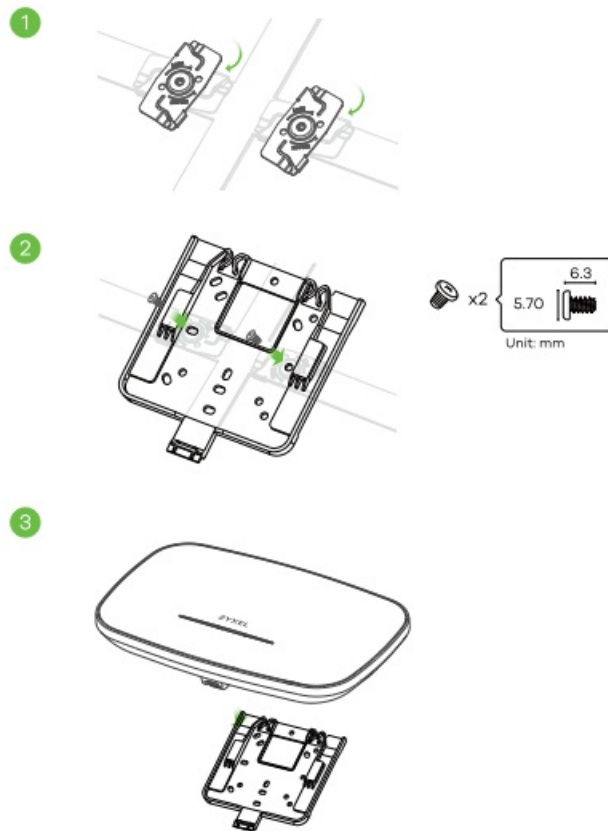
- Wall mounting: Drill two holes for the screw anchors (A), 62.4 mm apart. Insert the screw anchors into the wall.
1-b)
- Ceiling mounting: Drill two holes for the screw anchors (A), 62.4 mm or 70.1 mm apart. Insert the screw anchors into the ceiling.



- Insert two mounting screws through the holes on the bracket (B) into the plugs/anchors to secure the bracket to the wall/ceiling. Make sure the screws are snugly and securely fastened to the wall/ceiling.
- After the bracket is attached to the wall/ceiling, slide the Zyxel Device onto the bracket until it clicks into place.

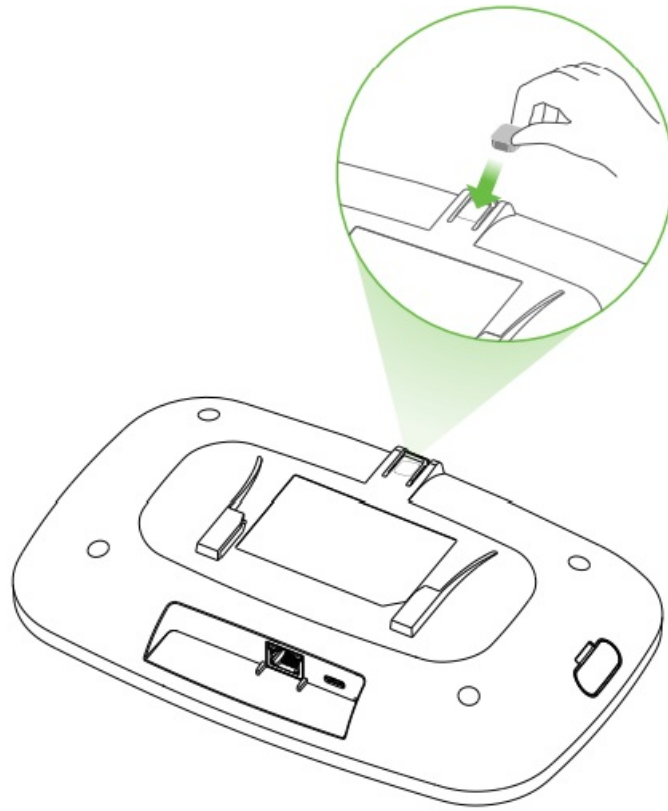
T-bar Ceiling Mounting

Clips (ACCESSORY-ZZ0105F) are sold separately.



1. Attach two clips to the ceiling grids as shown.
2. Install two screws to secure the bracket to the clips.
3. Slide the Zyxel Device onto the bracket until it clicks into the place. Note: Clips (ACCESSORY-ZZ0105F) are sold separately.

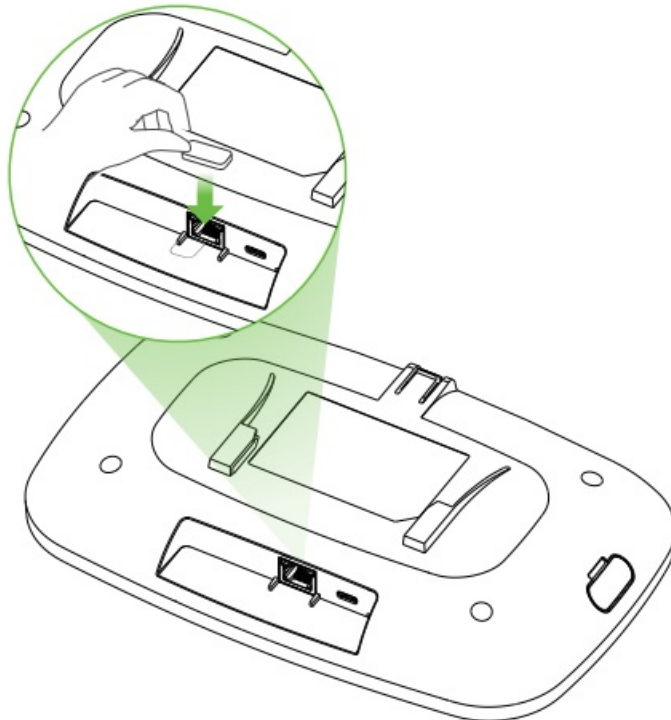
Desk Placement



1. Remove the adhesive backing from the rubber pad.
2. Align and attach the rubber pad to the gray square to stabilize the Zyxel Device.
3. Place the Zyxel Device on the desk.

Attaching the Connection Stabilization Pad (Optional)

- 1.



- Remove the adhesive backing from the rubber pad. Attach the rubber pad in front of the UPLINK port.
2. This keeps the Ethernet cable steady for a stable connection speed.

Support Information

EU <https://support.zyxel.eu>

Taiwan +886 2 2739 9889 retail@zyxel.com.tw

USA

- +1800 255 4101
- support@zyxel.com
- Zyxel Community <https://community.zyxel.com>

See the User's Guide at www.zyxel.com for more information, including customer support and safety warnings.

EU Importer

- Zyxel Networks A/S
- Gladsaxevej 378, 2. th. 2860 Søborg, Denmark <https://www.zyxel.com/dk/da/>
- I-JK Importer
- Zyxel Networks UK
- 2 Old Row Court, Rose Street, Wokingham, RG40 1XZ, United Kingdom (UK) <https://www.zyxel.com/uk/en/>

US Importer


Zyxel Communications, Inc.

1130 North Miller Street Anaheim, CA 92806-2001 <https://www.zyxel.com/us/en/>

Copyright © 2024 Zyxel and/or its affiliates. All Rights Reserved.

Documents / Resources

ZYXEL
WIS900
802.11ac (WiFi) 7E Dual-Band Unified Access Point



Quick Start Guide

ENGLISH | 中文(繁體) | FRANÇAIS | ITALIANO
 ESPAÑOL | DEUTSCH | HUNGARIAN | POLSKI | PORTUGAL
 ROMÂNIA | RUSSKIJAZ | SUOMI | VIETNAM
 Vietnamese | 한국어 | 日本語

Contents

Video Tutorials

Hardware Connections

Management Options

- Nebula Management with the App
- Nebula Management with the Web Portal
- Event Management with the Nebula Configuration

Mounting Options


- Wall / Ceiling Mounting
- Table Clamp Mounting
- Dock Placement

Attaching the Connection Redirection Plug (Optional)


Support Information

Video Tutorials

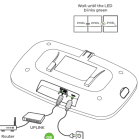
Onboarding the Zyxel Access Point to Cloud with the Nebula iOS



Onboarding the Zyxel Access Point to Cloud with the Nebula app



Hardware Installation



1

Getting Started

This guide provides information about the features and functions of the Zyxel WIS900. It also includes instructions on how to install and configure the device.

The contents of this document are subject to change without notice. Please refer to the latest version of this document for the most up-to-date information.

Copyright © 2018 Zyxel Corporation. All rights reserved.

