



## ZYXEL NWA1123-ACv3 NebulaFlex/Standalone Wireless Access Point User Guide

[Home](#) » [ZYXEL](#) » ZYXEL NWA1123-ACv3 NebulaFlex/Standalone Wireless Access Point User Guide 

# ZYXEL

NWA1123ACv3  
802.11ac Wave 2 Dual-Radio  
– Ceiling Mount PoE Access Point

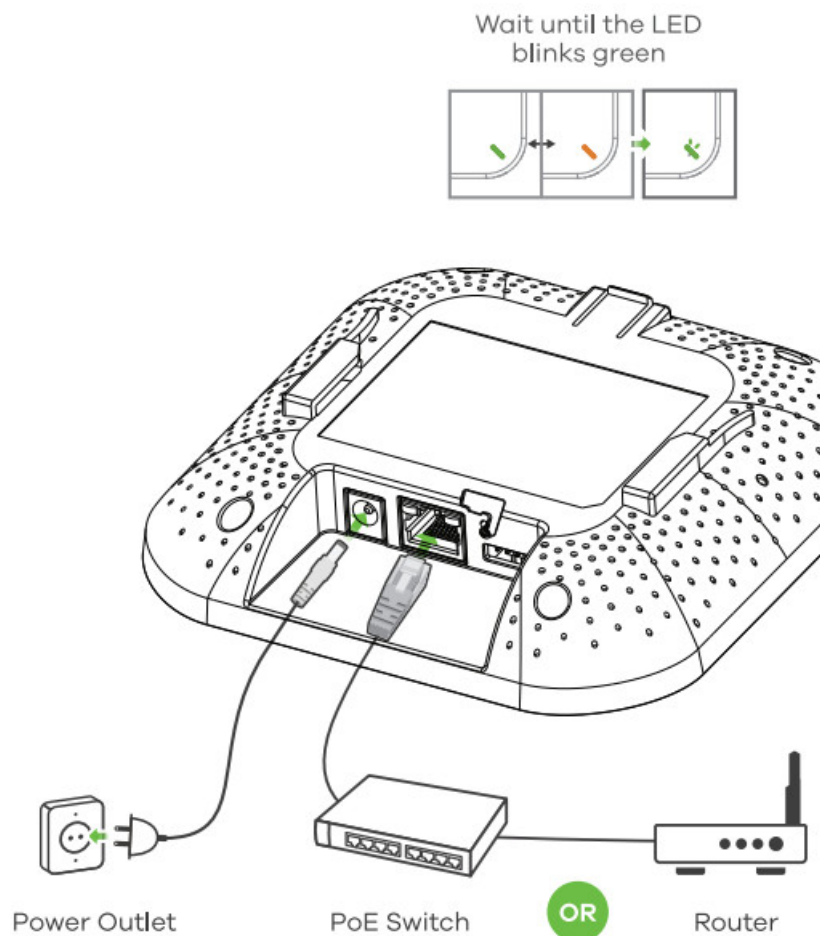


## Contents

- [1 Quick Start Guide](#)
- [2 Hardware Installation](#)
- [3 Option A Cloud Management](#)
- [4 Standalone Management](#)
- [5 Support Information](#)
- [6 Documents / Resources](#)
- [7 Related Posts](#)

## Quick Start Guide

### Hardware Installation



Connect the UPLINK port to a router with Internet access. If you are not using PoE, connect the NWA1123ACy3 power socket to an appropriate power source.

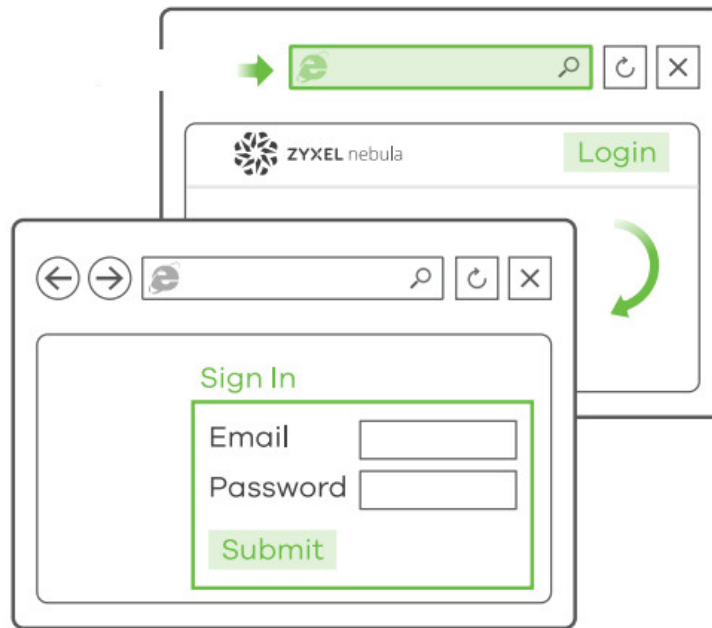
### Option A Cloud Management

**Option 1:** Use **MAC address** and **serial number** to add a device in the NCC



<https://nebula.zyxel.com>

1



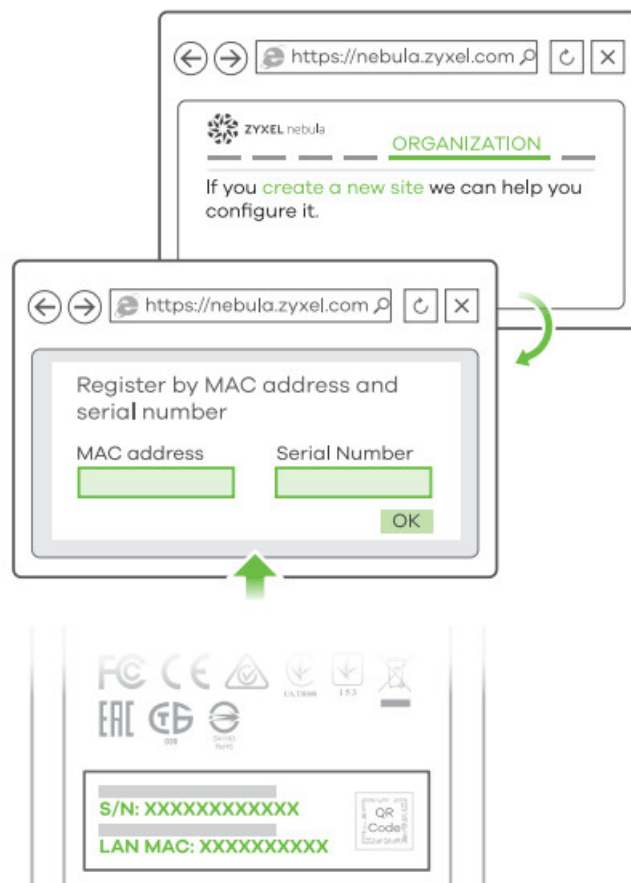
Follow the steps below to manage the NWA1123ACv3 through the Zyxel cloud-based network management system.

**Note:** Make sure the connected router has Internet access.

(1) Go to the Zyxel Nebula Control Center (NCC) website (<https://nebula.zyxel.com>). Click **Get Started** to sign up for my Zyxel account and log in.

2

3



(2) Create an organization and a site (if in the NCC).

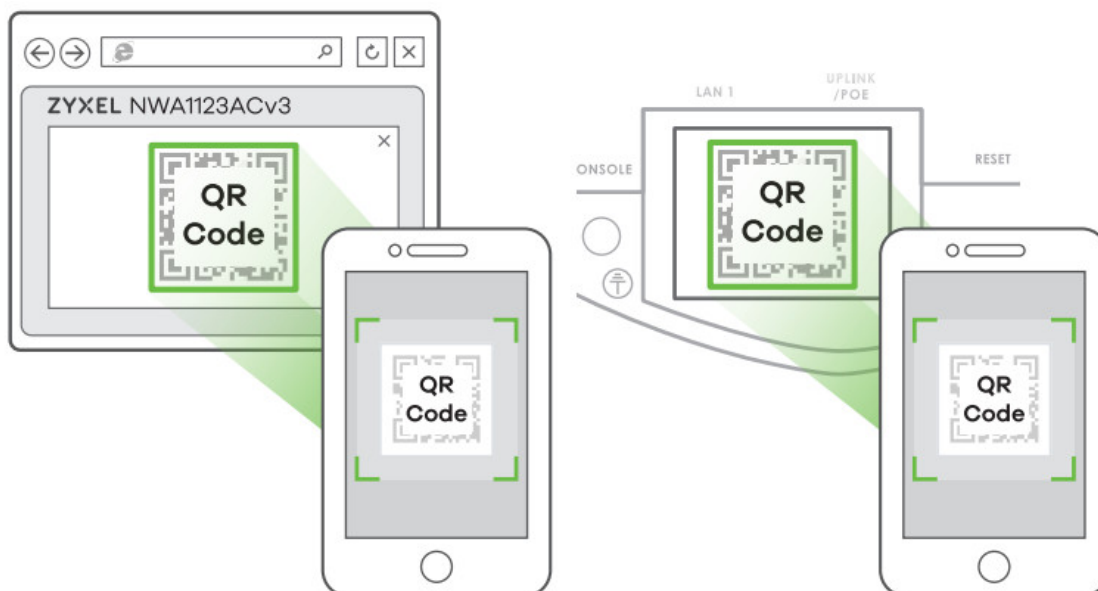
(3) Enter the NWA1123ACv3's LAN MAC address and serial number (S/61) (see the label on the device) in the NCC configuration screen. Note: The NWA1123ACv3 will go into cloud management mode automatically and restart after it is registered to the site. See the NCC User's Guide for more information about configuring the NWA1123ACv3 through the NCC.

**Option 2:** Use Zyxel Nebula Mobile app to add a device in the NCC



Where to find QR code:

**Web Configurator or Label on the device**



Download and open the Zyxel Nebula Mobile app. Log in with your Zyxel account. Create an organization and site or select an existing site. Scan the NWA1123ACv3's QR code to add it to the site. (You can find the QR code in its web configurator or on a label on the device or its box.)

**Note:** The NWA1123ACv3 will go into cloud management mode automatically and restart after it is registered to the site.

## Option B

### Standalone Management

WiFi connection



<http://1.11.1> (First-time-configuration only)



(1) a From a WiFi-enabled computer, search for the NWA1123ACv3's default WiFi network name (Zyxel-XXXX, where XXXX is the last four characters of the MAC address) and connect to it

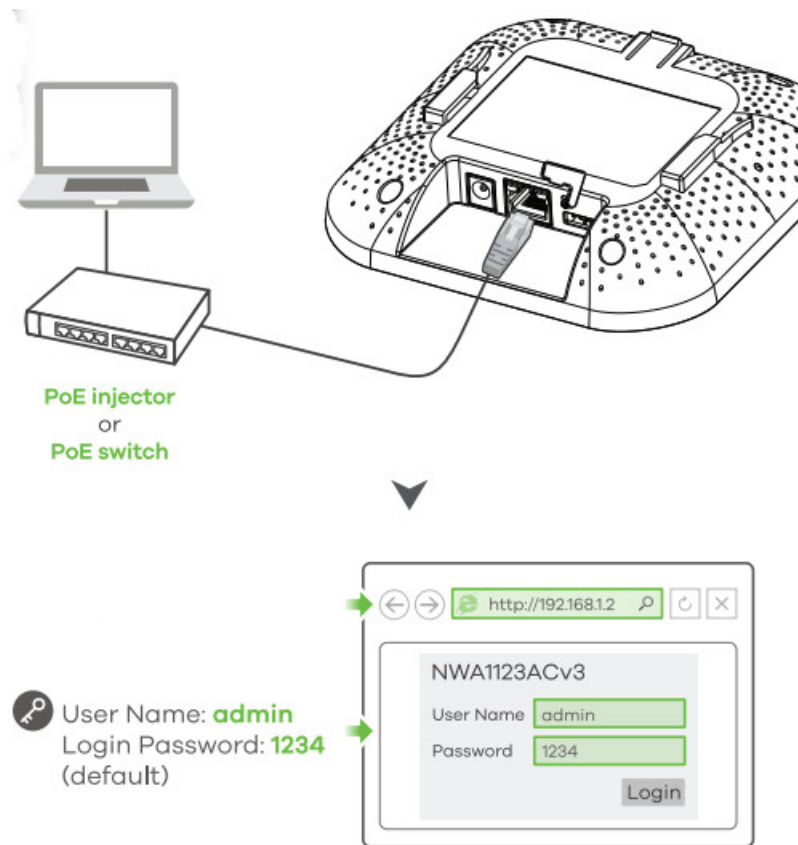
Open your web browser and enter `http://1.1.1.1` for initial configuration. Enter the default user name (admin) and password (1234). Click Login. [login/Reset instructions](#)

**Note:** If the NWA1123ACv3 cannot connect to the Internet, use the MCP-assigned IP address of the NWA1123ACv3 to access its web configurator. Check the connected router or DHCP server for the IP address of the NWA1123A0.1.

#### 1-b Wired connection



<http://192168.12>



**1-b** Use an Ethernet cable to connect your computer to the **UPLINK** port of the NWA1123ACy3 through a PoE injector or PoE switch. Use its Di ICP-assigned IP or default static IP address "<http://192.168.12>" to access the web configurator. Make sure your computer IP address is in the same subnet as the NWA1123ACv3s.

2

**Wizard setting**

**ZYXEL NWA1123ACv3**

SSID:

☒ PSK

Secret:

Prev Next Cancel

**Note 1**

SSID (WiFi Network Name):

.....

PSK (WiFi Password):

.....

**DASHBOARD NWA1123ACv3**

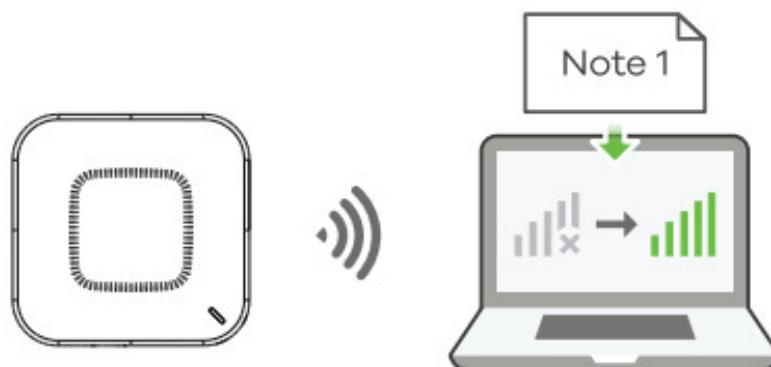
Interface Status Summary	
Name	IP Addr/Netmask
XXX	X.X.X.X / X.X.X.X

**Note 2**

Current IP Address:

.....

3



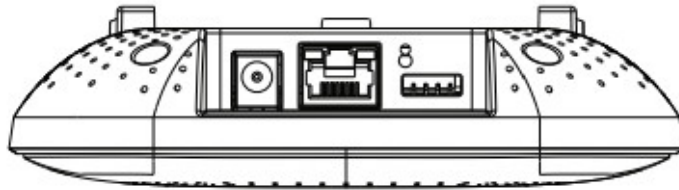
(2) The wizard appears automatically. Use the wizard to set up your NWA1123A0/3.

**Note:** It takes 1 to 2 minutes to apply your wizard changes. The power LED will blink red and green alternately. The power and WiFi LEDs then turn steady green when the system is ready. Check the **Dashboard** screen and note down the NWA1123ACv3's address in case you need to access its web configurator again.

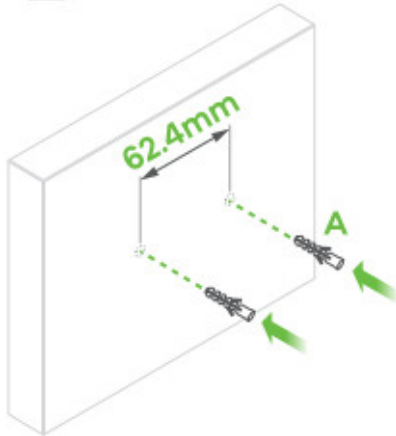
**Note:** 1.1.1.1 is for initial setup only. It is not usable after the NWA1123ACv3 is configured.

(3) Use the NWA1123ACv3's new wireless settings (SSID and key) to re-connect to the NWA1123ACv3's WiFi network for Internet access if you change them in the wizard.

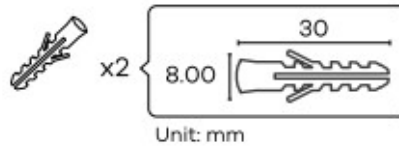
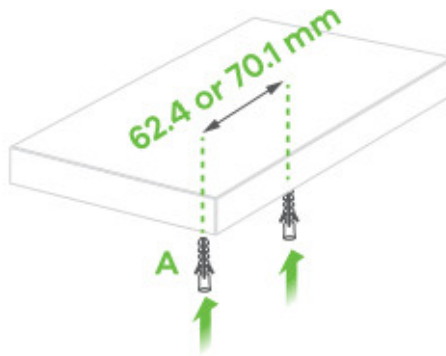
## Wall / Ceiling Mounting



1-a



1-b

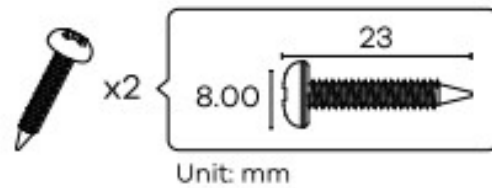
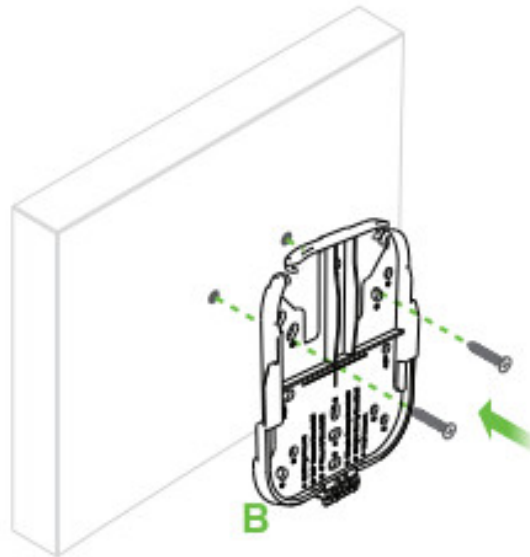


**1-a Wall mounting:** Drill two holes for the screw anchors (A), 624 mm apart. Insert the screw anchors into the wall. C)

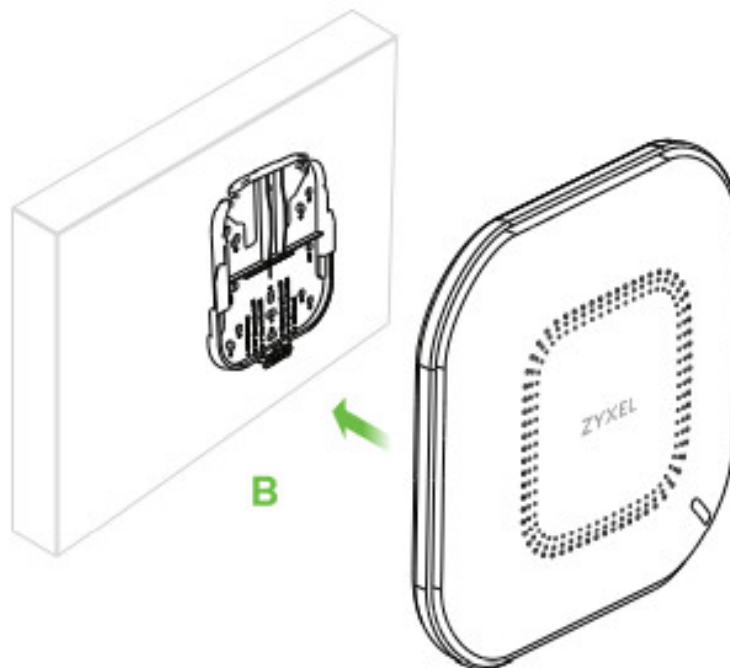
**1-b Ceiling mounting:** Drill two holes for the screw anchors (A), 62.4 mm or 70.1 mm apart. Insert the screw anchors into the ceiling.



2

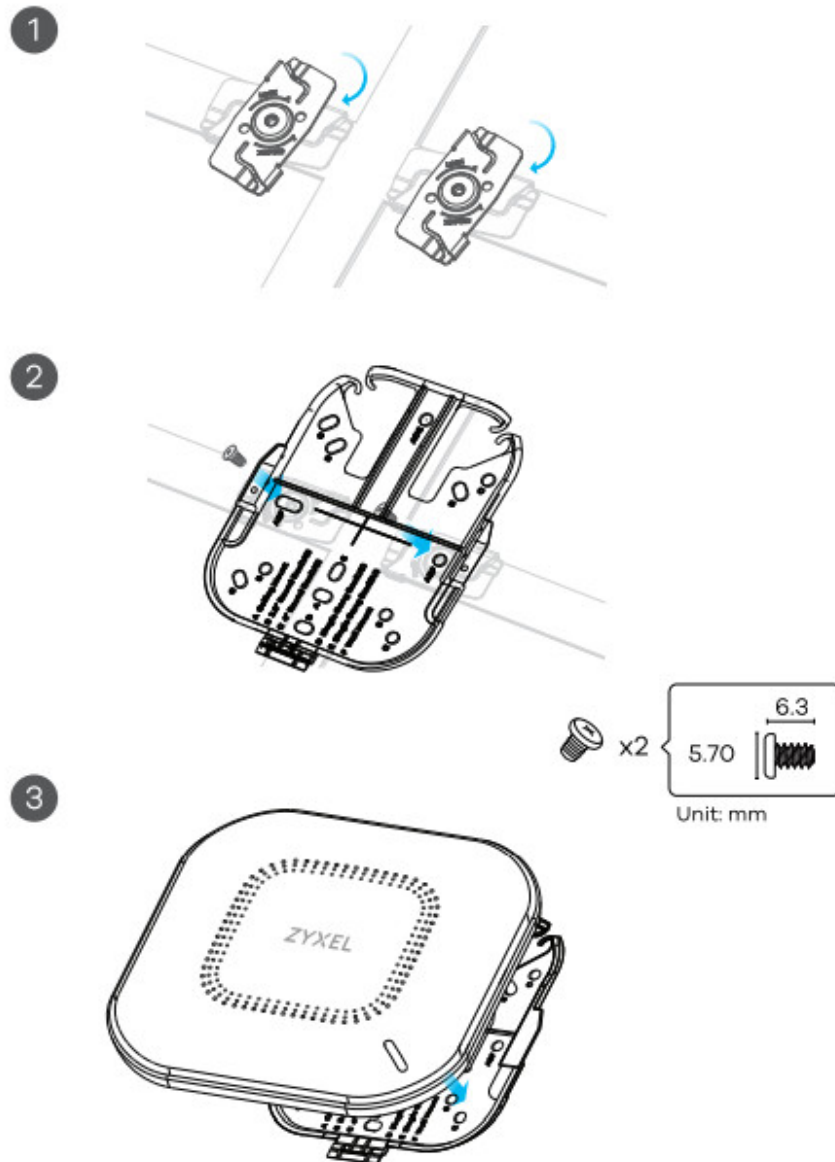


3



- (2) Install two mounting screws through the holes on the bracket (B) into the plugs/anchors to secure the bracket to the wall ceiling. Make sure the screws are snugly and securely fastened to the wall ceiling.
- (3) After the bracket is attached to the wall ceiling, slide the NWA1123ACv3 onto the bracket until it clicks into place.

### T-bar Ceiling Mounting



1. attach two Clips to the ceiling grids as shown.
2. Install two screws to secure the bracket to the clips.
3. Slide the NWA1123ACy3 onto the bracket until It clicks into the place.

**Note:** Clips (ACCESSORY-220106F) are sold separately.

## Support Information

### North America



+1800 255 4101 eaaoLteyzarsa



[support@zyxel.com](mailto:support@zyxel.com)

### EU

<https://supprt.zyxel.eu>

See the User's Guide at [www.zyxel.com](http://www.zyxel.com) for more information, including customer support and safety warnings.

### EU Importer

Zyxel Communications A/S

Gladsaxevej 378 2 th. 2860 Satara, Denmark <https://www.zyxel.com/dk/da/>


### US Importer

Zyxel Communications, Inc

1130 North Miller Street Anaheim, CA 92806-2001 <https://www.zyxel.com/us/en/>



**Documents / Resources**

	<p><a href="#">ZYXEL NWA1123-ACv3 NebulaFlex/Standalone Wireless Access Point</a> [pdf] User Guide NWA1123-ACv3, NebulaFlex Wireless Access Point, Standalone Wireless Access Point, Wireless Access Point, NebulaFlex, Standalone</p>
---	--

Manuals+