



ZYXEL Ethernet Switch with optional Cloud Management User Guide

[Home](#) » [ZYXEL](#) » ZYXEL Ethernet Switch with optional Cloud Management User Guide 

Contents

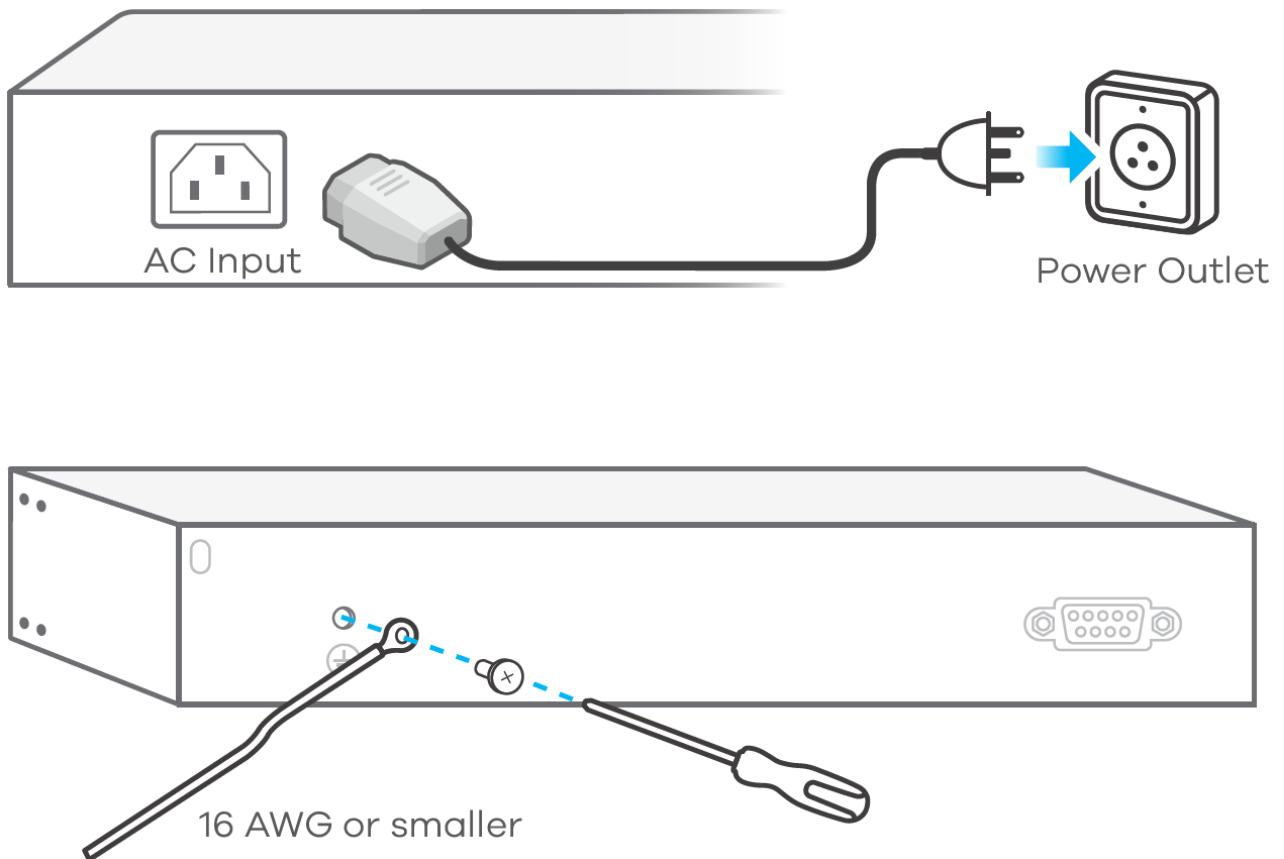
- [1 ZYXEL Ethernet Switch with optional Cloud Management](#)
- [2 Hardware Installation](#)
- [3 Option A Cloud Management](#)
- [4 Option B Standalone Configuration](#)
- [5 Mounting Options \(by each model\)](#)
 - [5.1 Rack Mounting](#)
 - [5.2 Wall Mounting](#)
 - [5.3 Desktop Installation](#)
- [6 Documents / Resources](#)
 - [6.1 References](#)
- [7 Related Posts](#)

ZYXEL

ZYXEL Ethernet Switch with optional Cloud Management



Hardware Installation

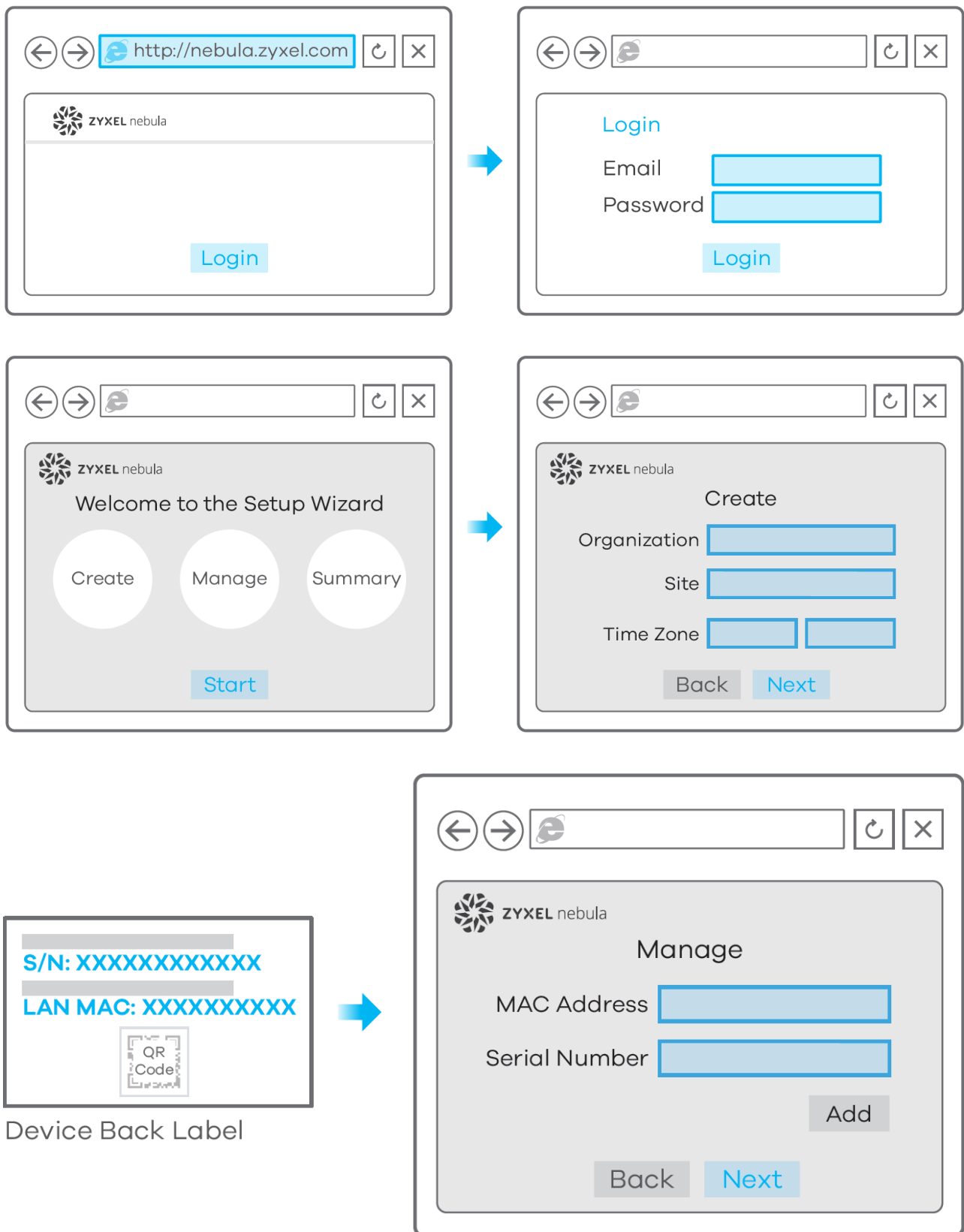


To help protect against lightning and interference functions, secure a green/yellow ground cable to the Switch.

Option A Cloud Management

1. Go to the ZyXEL Nebula Control Center (NCC), and click Login to sign up for a myZyXel account or enter your existing account information.
2. Use the setup wizard to create an organization and a site.
3. Register the Switch by entering its MAC address and serial number.

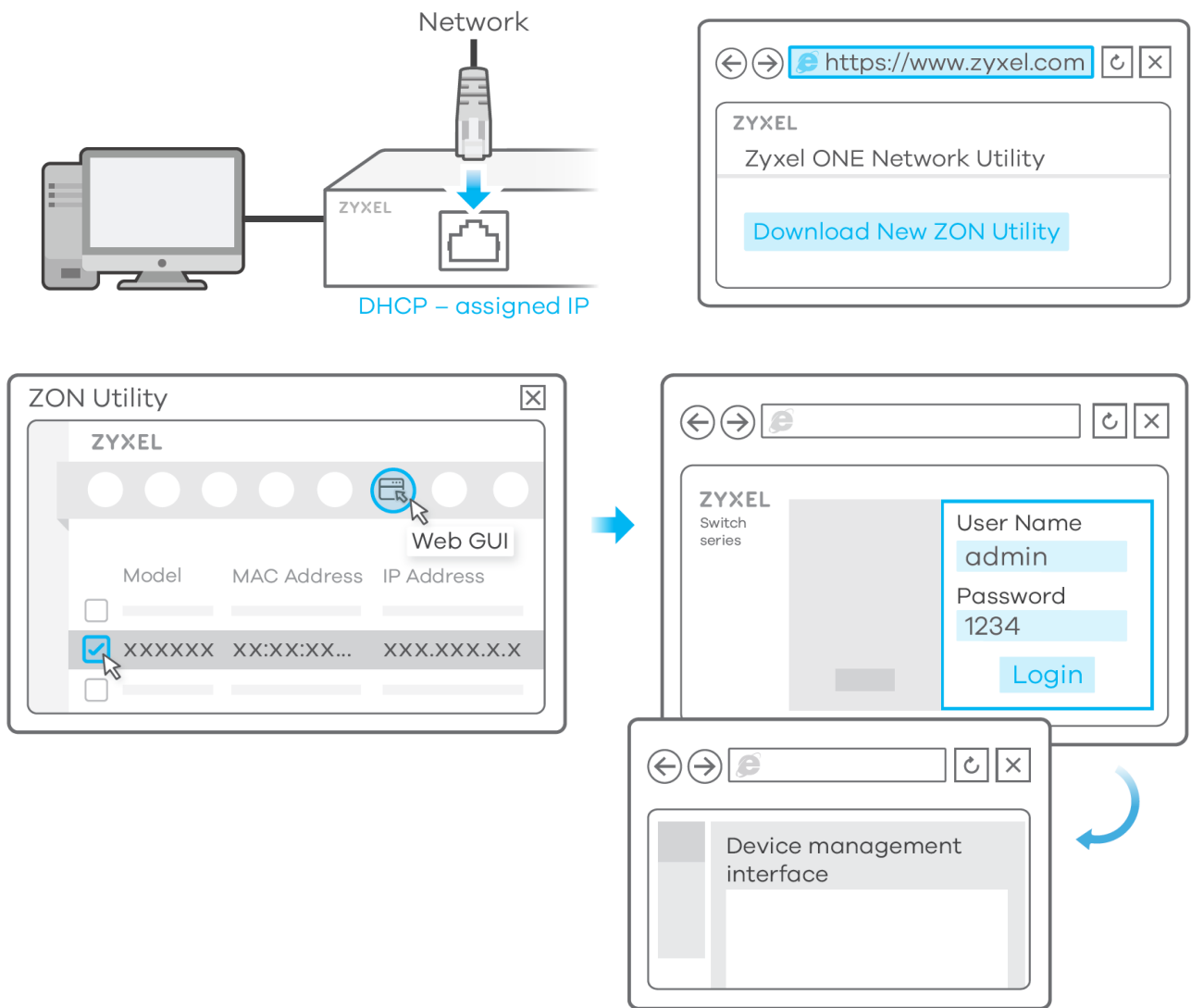
Note: The Switch can be managed by the NCC automatically after it has been registered to a site.



Option B Standalone Configuration

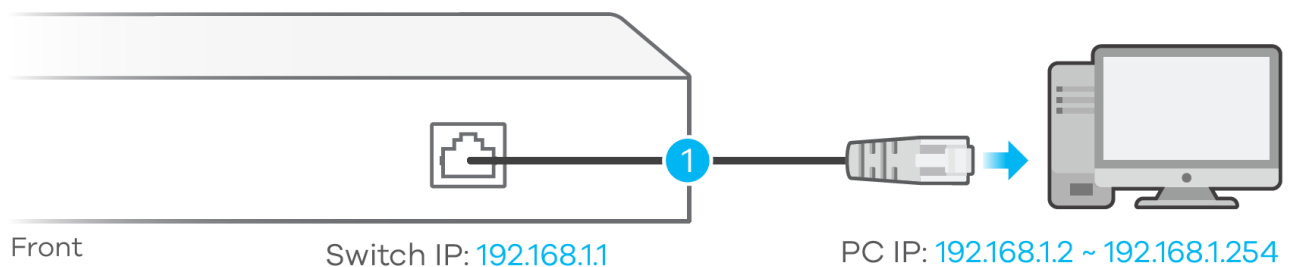
Option 1: Configure with ZON Utility for DHCP Environment

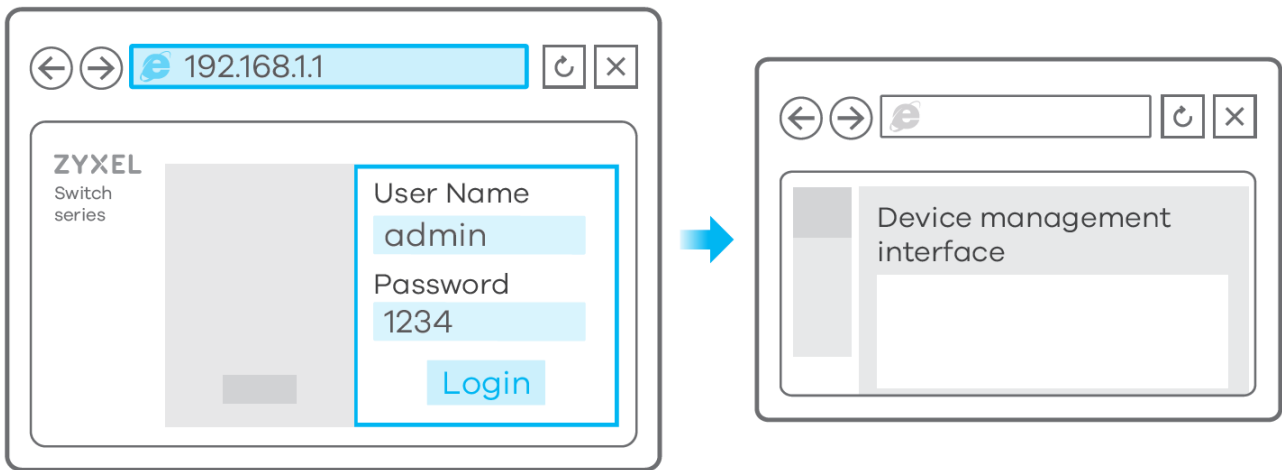
1. Connect the Switch and your computer to the same network that has a DHCP server.
2. Use the ZON utility to discover the Switch. Select the Switch and click the Web GUI icon to access its web configurator.



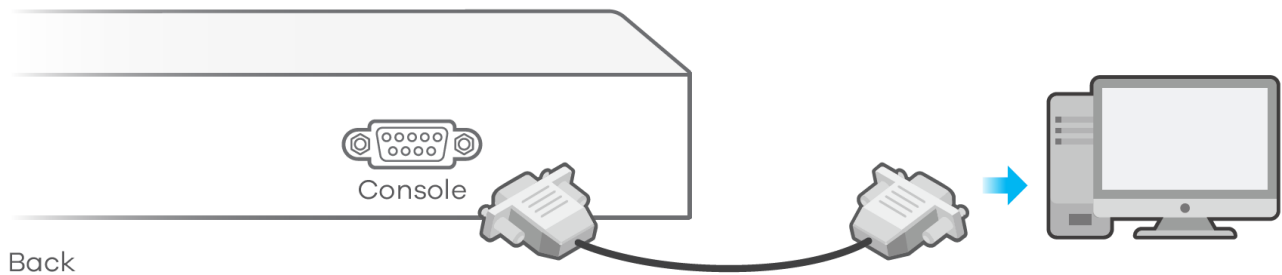
Option 2: Configure with Switch Default Static IP

1. Connect your computer to the Switch and make sure its IP address is in the same subnet.
2. Launch your web browser to access and configure the Switch.

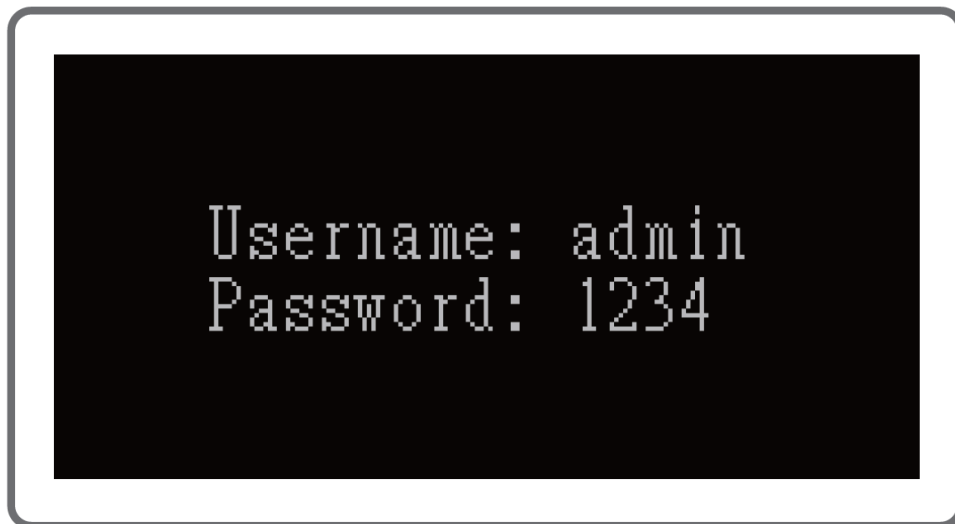




Option 3: Configure with Console Cable (Managed Switch Only)

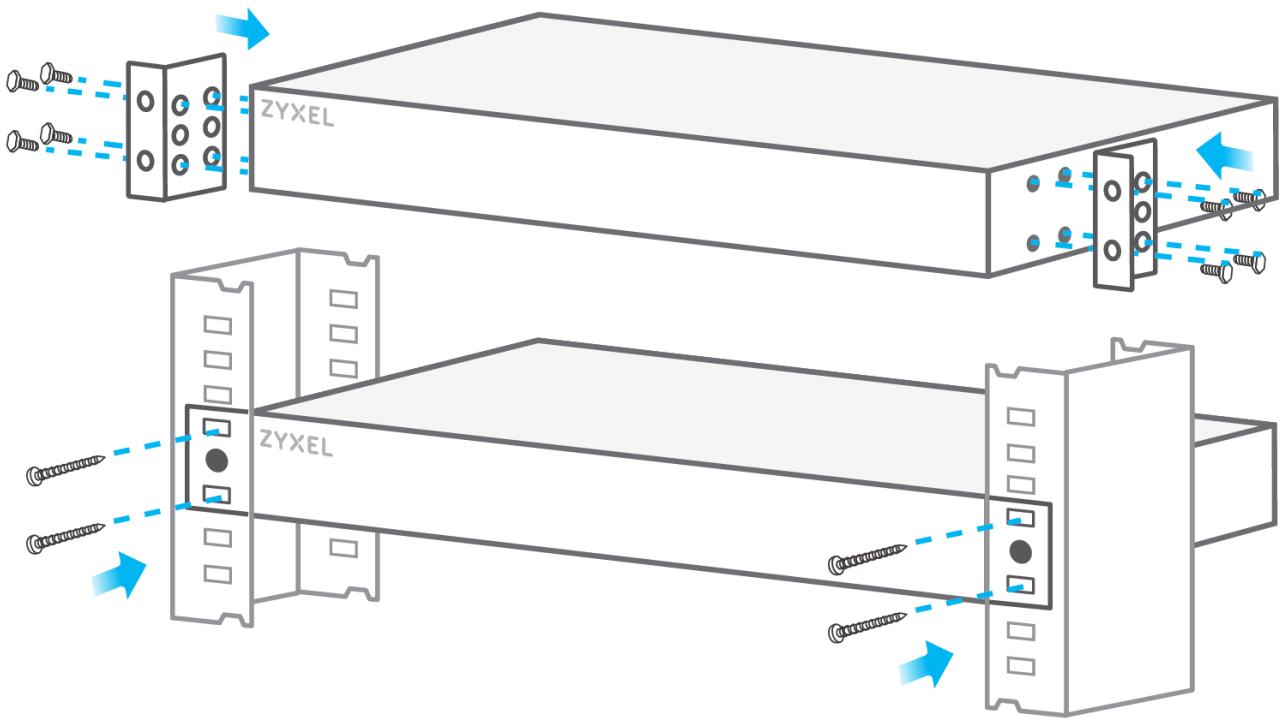


Terminal emulator configuration:
VT100 terminal emulator
9600 bps or 115200 bps
No parity, 8 data bits, 1 stop bit
No flow control

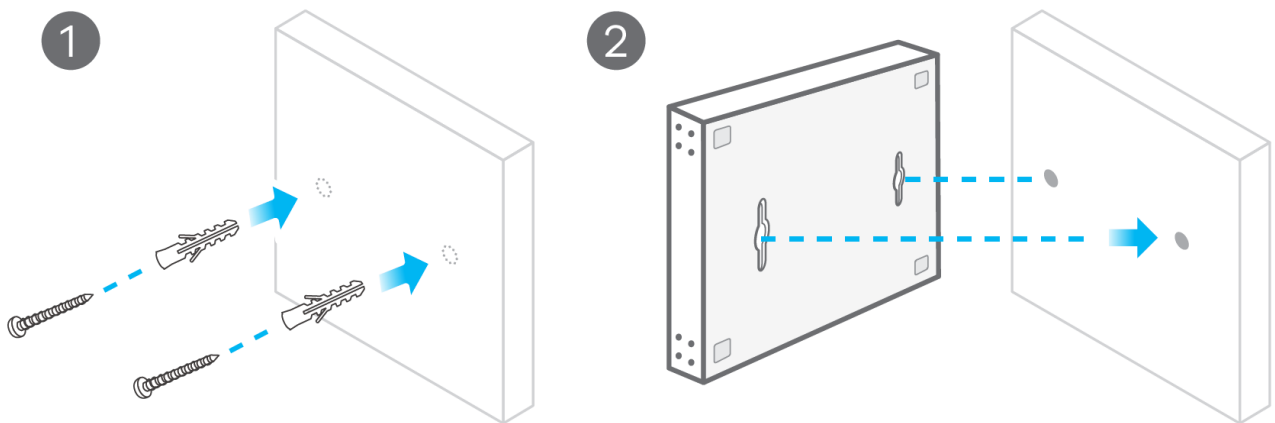


Mounting Options (by each model)

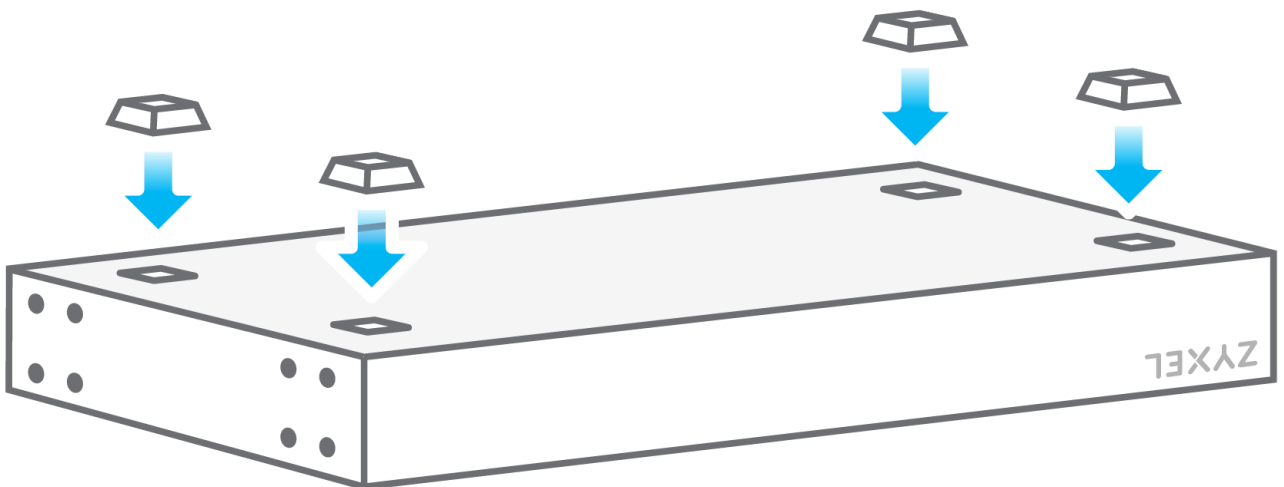
Rack Mounting



Wall Mounting

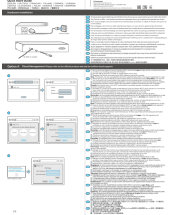


Desktop Installation






Documents / Resources

	<p>ZYXEL Ethernet Switch with optional Cloud Management [pdf] User Guide ZYXEL, Ethernet Switch, optional Cloud Management</p>
---	--

References

-  [Zyxel Nebula](#)
- ZYXEL [Zyxel Networks, Your Networking Ally | Zyxel Networks](#)
- ZYXEL [Zyxel Networks, Your Networking Ally | Zyxel Networks](#)
- ZYXEL [Zyxel Networks, Your Networking Ally | Zyxel Networks](#)
- ZYXEL [Zyxel Networks, Your Networking Ally | Zyxel Networks](#)