




[Home](#) » [ZyXEL NETWORKS](#) » **ZYXEL NETWORKS VMG4005-B50A Bonding and Single Line Bridge User Guide** 

**ZYXEL**  
**COMMUNICATIONS**  
**VMG4005-B50A / VMG4005-B60A**  
**VDSL2 17a Bonding and 35b (Vplus)**  
**Single Line Bridge**

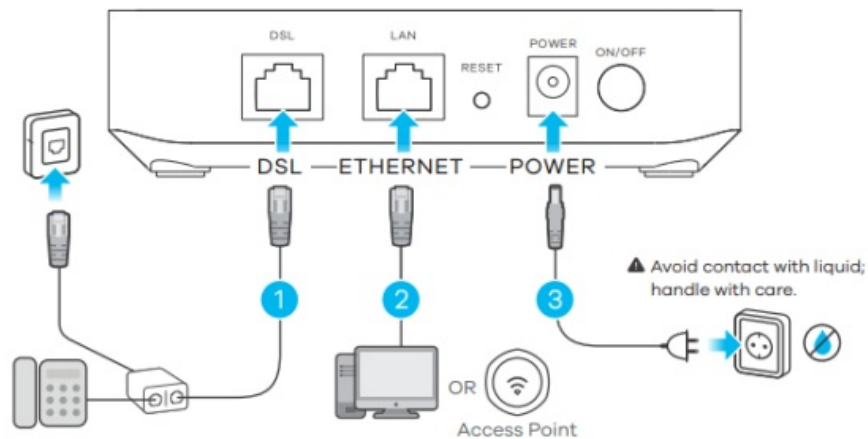


**Quick Start Guide**

**Contents** [ [hide](#) ]

- [1 Hardware Installation](#)
- [2 LEDs](#)
- [3 Wall Mounting \(Optional\)](#)
- [4 Drilling Guide](#)
- [5 Support Information](#)
- [6 Documents / Resources](#)
  - [6.1 References](#)



## Hardware Installation




1. Use a phone cable to connect the DSL port to a DSL splitter or directly to the telephone wall outlet.
2. Connect a computer or Access Point to the LAN port using an Ethernet cable.
3. Use the included power adapter to connect the power socket to an appropriate power source. Press the ON/OFF button to turn on the Device.
4. Check that the LED lights are already on.

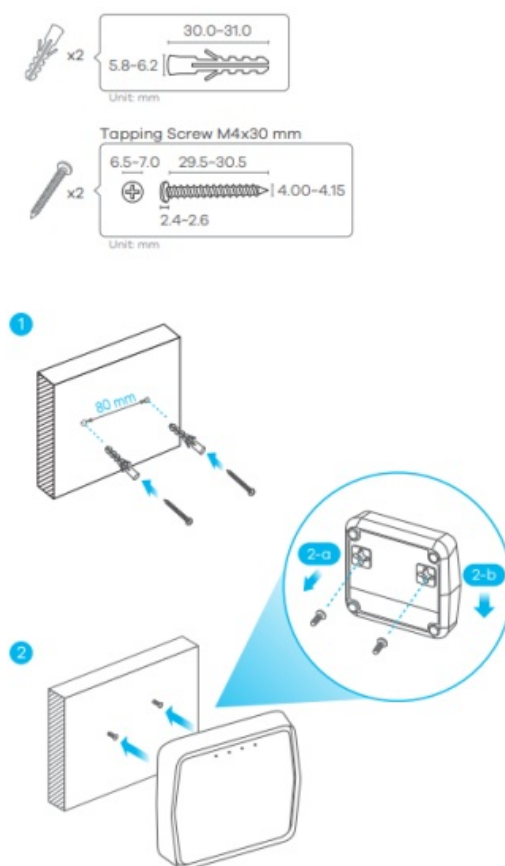
## LEDs

### POWER, DSL, and LAN LEDs Indicator Table

 POWER	Green	Blinking	Booting stage, the Device is getting ready for use.
		On	Device is ready for use.
	Red	Blinking	Firmware upgrade is ongoing.
		On	System failure.
 DSL	Green	On	VDSL/ADSL link is up.
		Blinking (slow)	Link is down and trying to detect carrier signal.
		Blinking	Initializing the link.

 Ethernet LAN	Green	on	Ethernet is ready.
		Blinking	Transmitting/receiving LAN data.

## Wall Mounting (Optional)

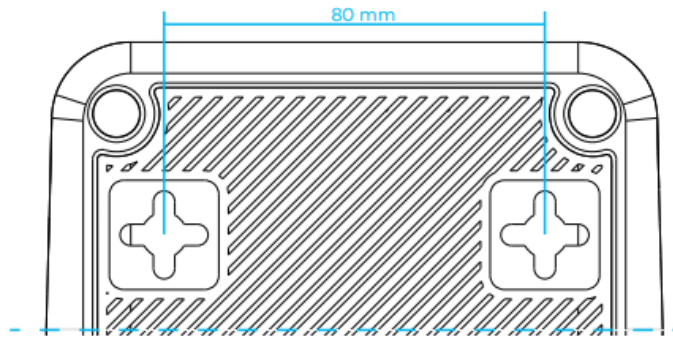


1 (Optional) Drill two holes on the wall at the distance of 80 mm. Insert the screw anchors and screws (not provided).

2-a Place the Device so the wall mount holes line up with the screws.

2-b Slide the Device down gently to fix it into place.

## Drilling Guide



1. Place this Quick Start Guide on the wall and use it to mark the holes for drilling.
2. Use a 6.0-6.5 mm-size drill bit to drill two holes in the wall to a depth of 32 mm.

## Support Information

 <https://www.zyxel.com/service-provider/global/en/tech-support>



<https://zyxelsp.com/tech-support>

### EU Importer

Zyxel Communications A/S

Gladsaxevej 378, 2. th. 2860 Søborg, Denmark.

### UK Importer

Zyxel Communications UK Ltd.

2 Old Row Court, Rose Street, Wokingham, RG40 1XZ, United Kingdom (UK)

### US Importer

Zyxel Communications, Inc.

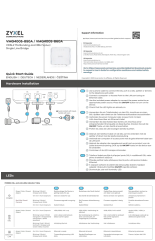
1130 North Miller Street Anaheim, CA 92806-2001

<https://www.zyxel.com/service-provider>

Copyright © 2025 Zyxel and/or its affiliates. All Rights Reserved.




## Documents / Resources

	<a href="#">ZYXEL NETWORKS VMG4005-B50A Bonding and Single Line Bridge [pdf] User Guide</a> VMG4005-B50A, VMG4005-B60A, VMG4005-B50A Bonding and Single Line Bridge, VMG4005-B50A, Bonding and Single Line Bridge, Single Line Bridge, Line Bridge
---	---

## References

- [User Manual](#)

 ZYXEL  
NETWORKS

 Bonding and Single Line Bridge, Line Bridge, Single Line Bridge, VMG4005-B50A, VMG4005-B50A Bonding and Single Line Bridge, VMG4005-B60A, ZYXEL NETWORKS

---

## Leave a comment

Your email address will not be published. Required fields are marked \*

Comment \*

Name

Email

Website

☐ Save my name, email, and website in this browser for the next time I comment.

Post Comment

Search:

e.g. whirlpool wrf535swhz

Search

[Manuals+](#) | [Upload](#) | [Deep Search](#) | [Privacy Policy](#) | [@manuals.plus](#) | [YouTube](#)

This website is an independent publication and is neither affiliated with nor endorsed by any of the trademark owners. The "Bluetooth®" word mark and logos are registered trademarks owned by Bluetooth SIG, Inc. The "Wi-Fi®" word mark and logos are registered trademarks owned by the Wi-Fi Alliance. Any use of these marks on this website does not imply any affiliation with or endorsement.