



Zykronix LBEE5ZZ1PJ W-LAN Bluetooth Module Installation Guide

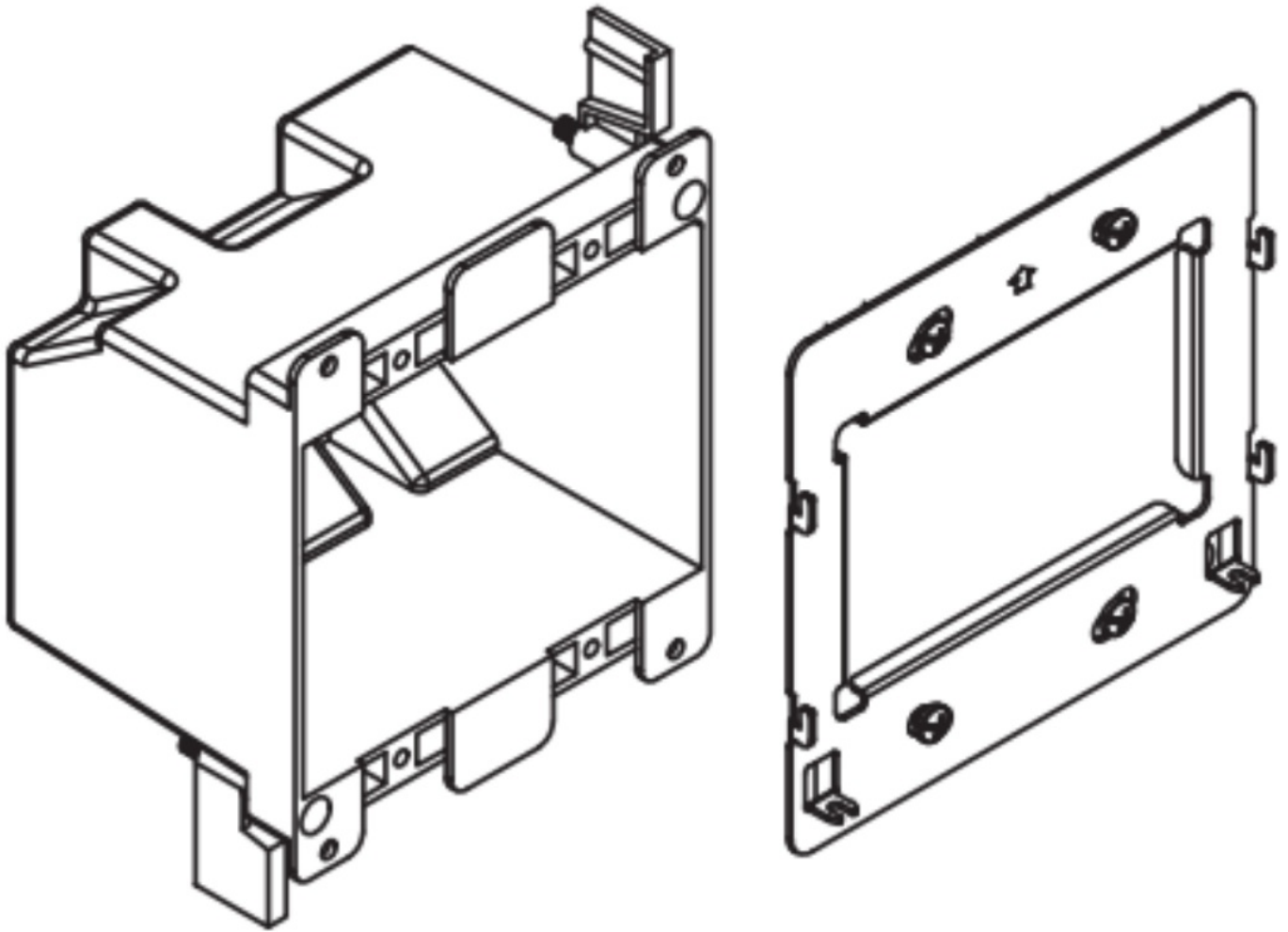
[Home](#) » [Zykronix](#) » Zykronix LBEE5ZZ1PJ W-LAN Bluetooth Module Installation Guide 

Contents

- [1 Zykronix LBEE5ZZ1PJ W-LAN Bluetooth Module](#)
- [2 Introduction](#)
- [3 Included in the box](#)
- [4 Device – Overview](#)
- [5 Installing the device](#)
- [6 FCC RULES](#)
- [7 Documents / Resources](#)
- [8 Related Posts](#)

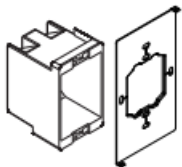


Zykronix LBEE5ZZ1PJ W-LAN Bluetooth Module

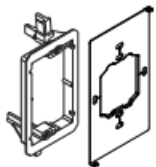


Introduction

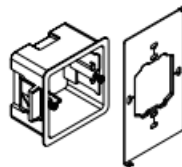
To install the device you will also need one of the following electrical junction boxes for the supplied mounting bracket.



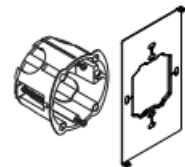
Standard NEMA
1-gang US electrical
junction box



Low-voltage mounting
ring Arlington LV1



UK standard 1-gang
electrical box



European 1-gang
electrical box

Included in the box

- 1ea Device
- 1ea Mounting bracket
- 2ea Mounting screws #5 for EU/CH/UK 1 gang box
- 2ea Mounting screws #6 for US 1 gang box

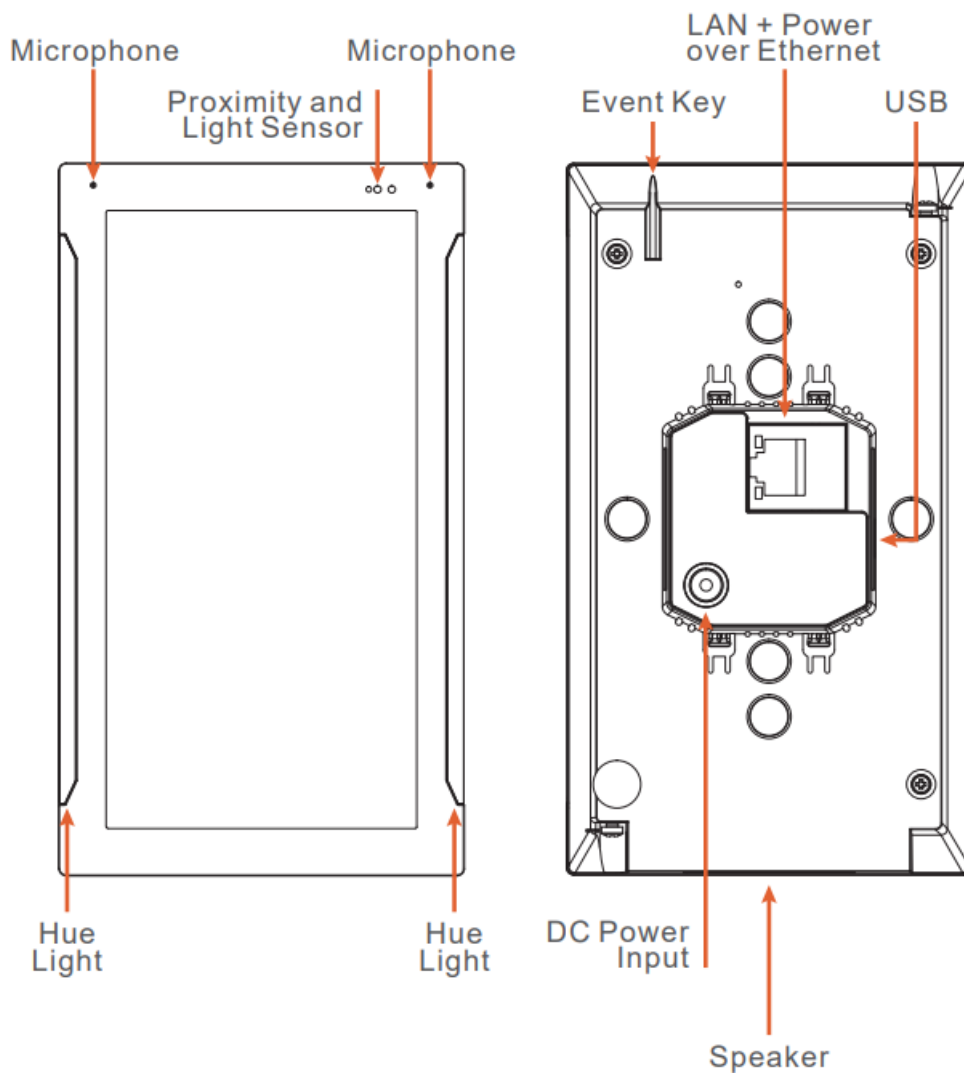
Important safety instructions

- Read, understand and follow ALL safety and installation instructions included in this manual.
- Failure to follow the included documentation may damage the product and will void the manufacturer's

warranty.

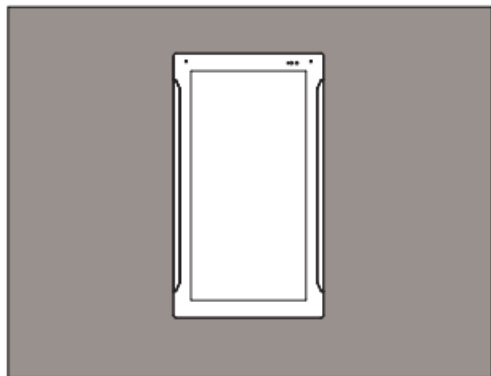
- Follow ALL installation guidelines included with the product. Installation of the product in high humidity environments, in close proximity to heat sources and/or non-recommended locations WILL impede, interfere and/or damage the intended operation of the product.
- Only use attachments and accessories which have been specified for use by the manufacturer.
- The use of abrasive, liquid or solvent-based cleaning fluids WILL damage the product. Product Servicing may ONLY be completed by authorized or certified service centers &
- personnel. For a complete list of product servicing options, please follow instructions included in the product documentation and/or contact the original manufacturer for details.

Device – Overview



Planning the installation

The device is designed to be wall mounted in either Portrait or Landscape orientation, or on tabletop with stand. The device requires a minimum mounting depth of 1"(2.45cm) from the wall surface to the room for cable/s. Power may be supplied by Power Over Ethernet (PoE) or by a 24V DC power supply (not included). PoE connecting must meet the IEEE 802.3af standard. Direct power connecting via a 24V DC external power supply requires a minimum current output of 1A. The device connects to the local network via a hard wired Ethernet connection. Or connecting with WiFi in the case of the units with WiFi function.



On the wall



On the stand
Part No.:89-9E0-1010-00

Installing the device

Mounting height

The recommended mounting height for the device is 57"- 65" (145 cm -165 cm) from the finished floor to the center of the unit.

Landscape/Portrait mounting

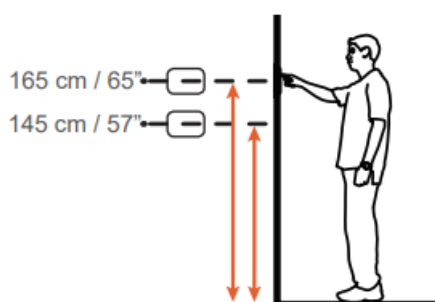
Device can be mounted and oriented in Portrait or Landscape.

- **Landscape:**

- Install the 1-gang junction box or low-voltage bracket horizontally with mounting screw holes on the left and right sides.

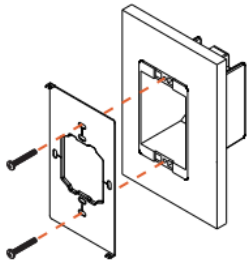
- **Portrait:**

- Install the 1-gang box junction box or low-voltage bracket in its normal orientation with mounting screw holes at the top and bottom.

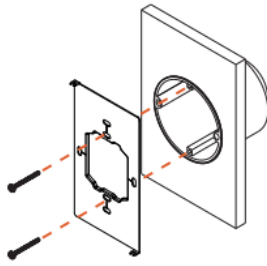


Installing the device mounting bracket

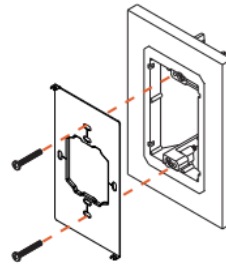
The device package includes a stainless steel mounting bracket that **MUST** be used for installation. Using the included #5 screws to mount the mounting bracket onto the EU/CH/UK 1 gang junction box. Using the included #6 screws to mount the mounting bracket onto the US 1 gang junction box, low voltage bracket. Take off the 2 original screws of the gang box before mounting! Verify that the bracket is level before tightening the captive screws on the device. (Mounting Bracket Part No.:84-9E0-0000-00)



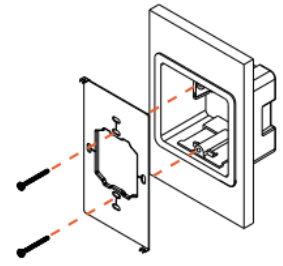
On low-voltage mounting
ring-like Arlington LV1



On European 1-gang
electrical box



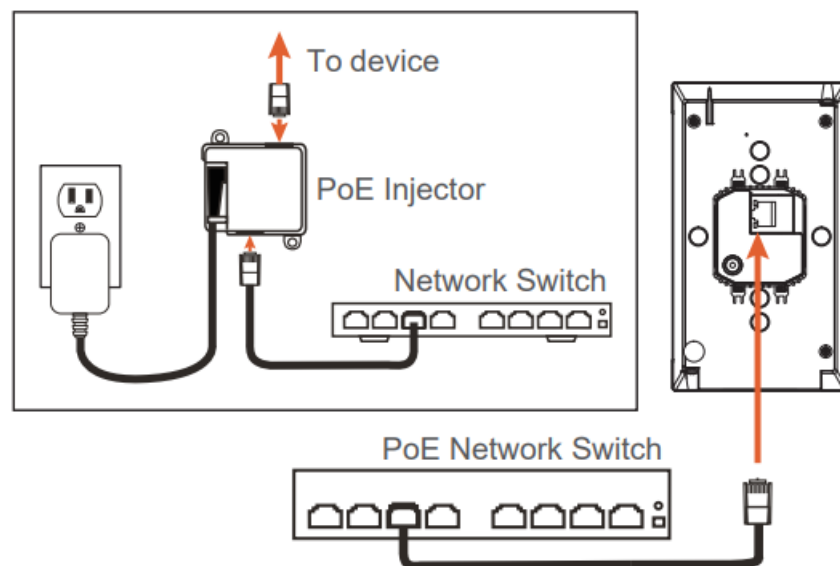
On standard NEMA 1-gang
US electrical junction box



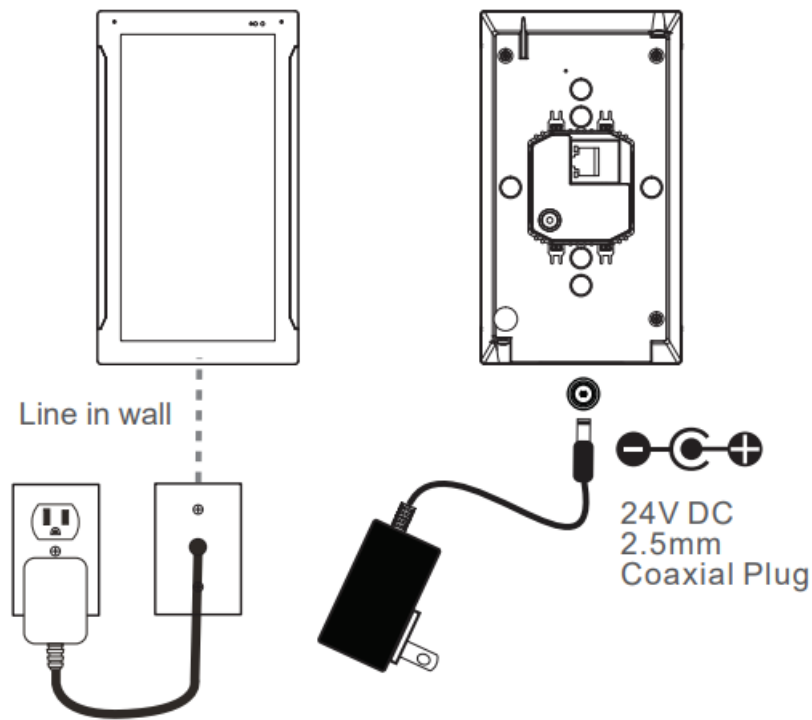
On UK standard 1-gang
electrical box

Connecting the device to power

The device is designed to be powered over the Ethernet connection (PoE) or by connecting a 24V power supply (not included), but not both. If both the PoE and a 24V power supply are connected, the device will draw power from the 24V source. When not utilizing PoE, it is recommended that you connect the device directly to the network switch. Utilizing a T568A or T568B network cable connects to the LAN/PoE jack. PoE Connection PoE connection requires IEEE 802.3af standard. Utilize a network switch or PoE injector that meets this standard. Connect the device using a standard T568A or T568B Ethernet cable from the network switch to the LAN/PoE jack on the back of the device.

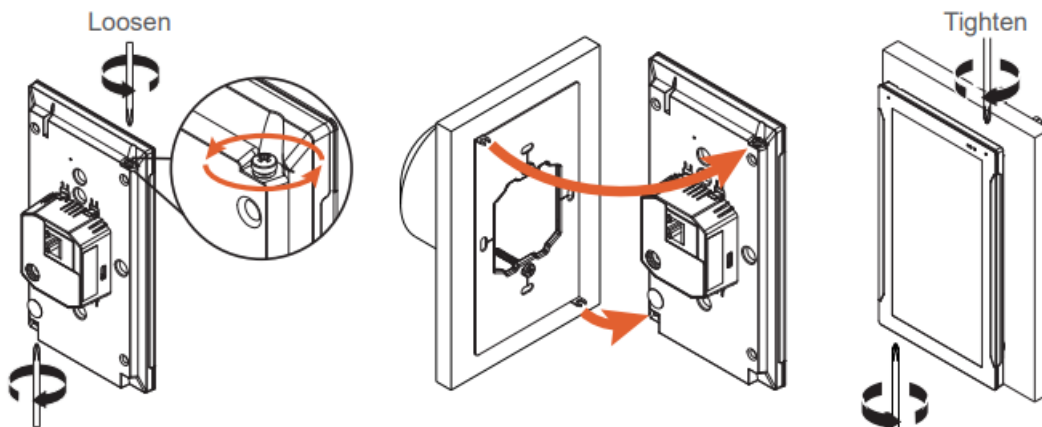


24V DC Power Supply You can provide power locally or remotely to device by utilizing a 24V DC power supply (not included). Please note that running the wire through the wall in accordance with local codes when powering locally. If powering remotely, please ensure to use wire of adequate gauge for the length of the run. Please use approved 24V DC power supply. Verify the polarity of the barrel connector on your power supply before connecting it to the device. The center pin of the device power connector is positive and the outer ring is negative. If the wire is extended, please ensure that the routing is in compliance with local codes. Plug the connector into the device DC jack on the back of the device.

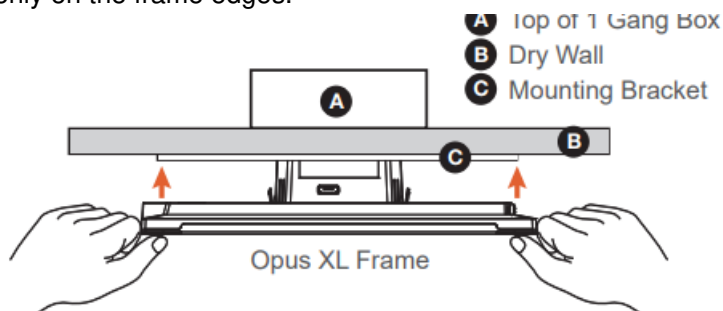


Mounting the device

Loosen the captive screws of the unit first. Screws should not be moved apart from the unit. (Loosen for 4 loops.) Align the mounting bracket hooks with the device mounting slots and gently press the unit toward the mounting bracket/wall.

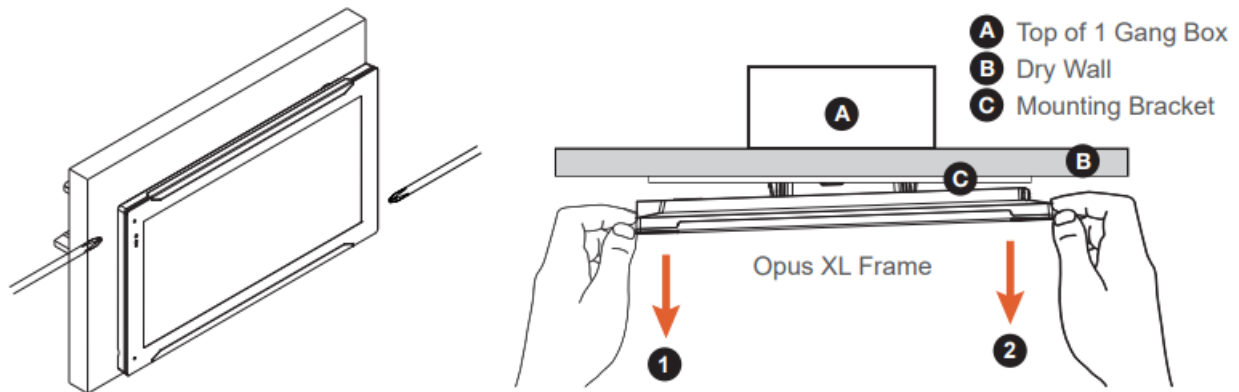


The device snaps in when pushed to its mounting bracket and held into the mounting bracket by 2 mounting screws, located on the left and right sides of the device when mounted in landscape mode. Orient the device for the desired portrait or landscape mounting option. To complete the installation insert the device into the included bracket and tighten the 2 captive screws to secure the device to the mounting bracket. When installing on to the mounting bracket. Press only on the frame edges.



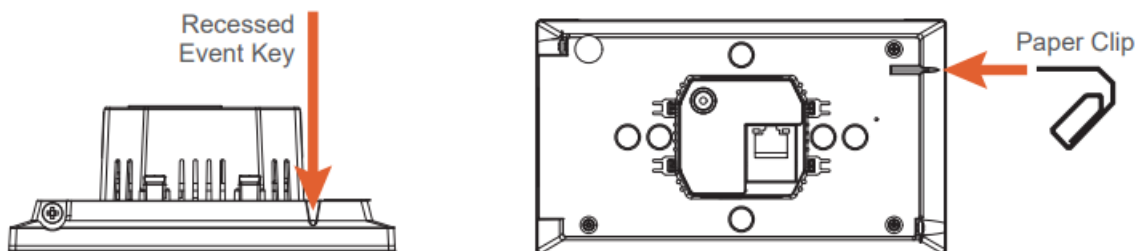
Removing the device

Using a precision philips head screw driver to loosen the 2 captive screws on the device and pull out from the wall (see picture below) following the step 1 and 2 in order.



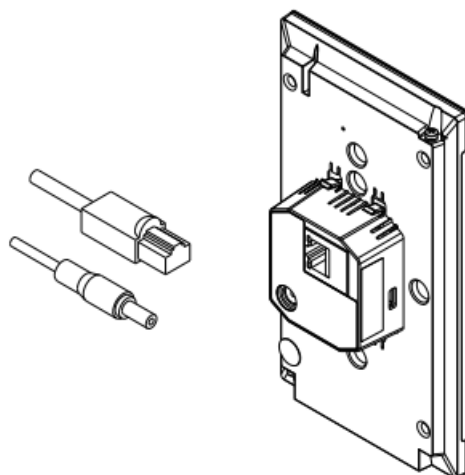
Event key

Tap the button to reboot the device. Thank you for including the device as part of the user interface strategy for your customer. The device has been designed to provide years of trouble free operation when wired and installed properly. The device is designed for installation in low humidity indoor environments and should never be installed outdoors or in high humidity areas.



Powering up the device

The device will automatically power on when power is applied. Wait for the unit to boot up. When it's connected to a network switch by Ethernet cable, the device will acquire a network address via DHCP and automatically connect to the system. If you are using an external power adapter/source, connect the 2 Pin connector of the adapter/source to device power jack.



RF exposure warning

This equipment must be installed and operated in accordance with provided instructions and the antenna(s) used for this transmitter must be installed to provide a separation distance of at least 20 cm from all persons and must

not be co-located or operating in conjunction with any other antenna or transmitter. End-users and installers must be provide with antenna installation instructions and transmitter operating conditions for satisfying RF exposure compliance.

Canada, Industry Canada (IC) Notices

This device complies with Canada licence-exempt RSS standard(s). Operation is subject to the following two conditions:

- this device may not cause interference, and
- this device must accept any interference, including interference that may cause undesired operation of the device.

FCC RULES

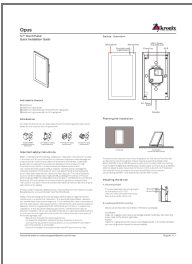
Any changes or modifications not expressly approved by the grantee of this device could void the user's authority to operate the equipment. This device complies with Part 15 of the FCC Rules. Operation is subject to the following two conditions:

- this device may not cause harmful interference, and
- this device must accept any interference received, including interference that may cause undesired operation.

This equipment has been tested and found to comply with the limits for a Class B digital device, pursuant to part 15 of the FCC Rules. These limits are designed to provide reasonable protection against harmful interference in a residential installation. This equipment generates, uses and can radiate radio frequency energy and, if not installed and used in accordance with the instructions, may cause harmful interference to radio communications. However, there is no guarantee that interference will not occur in a particular installation. If this equipment does cause harmful interference to radio or television reception, which can be determined by turning the equipment off and on, the user is encouraged to try to correct the interference by one or more of the following measures:

- Reorient or relocate the receiving antenna.
- Increase the separation between the equipment and receiver
- Connect the equipment into an outlet on a circuit different from that to which the receiver is connected.
- Consult the dealer or an experienced radio/TV technician for help.

Documents / Resources

	<p>Zykrionix LBEE5ZZ1PJ W-LAN Bluetooth Module [pdf] Installation Guide LBEE5ZZ1PJ W-LAN Bluetooth Module, W-LAN Bluetooth Module, Bluetooth Module</p>
---	---