



## ZVOLTZ 2BFZ7ZXC Levitating Bluetooth Speaker User Manual

[Home](#) » [ZVOLTZ](#) » ZVOLTZ 2BFZ7ZXC Levitating Bluetooth Speaker User Manual 

  
Levitating Bluetooth speaker  
user's manual  
Zhaoqing Zhixuan Technology Co., LTD



## Contents

- 1 2BFZ7ZXC Levitating Bluetooth Speaker
- 2 Operation guidance:
- 3 matters need attention:
- 4 FCC Caution:
- 5 Documents / Resources
- 5.1 References

## 2BFZ7ZXC Levitating Bluetooth Speaker

Magnetic levitation product operating instructions

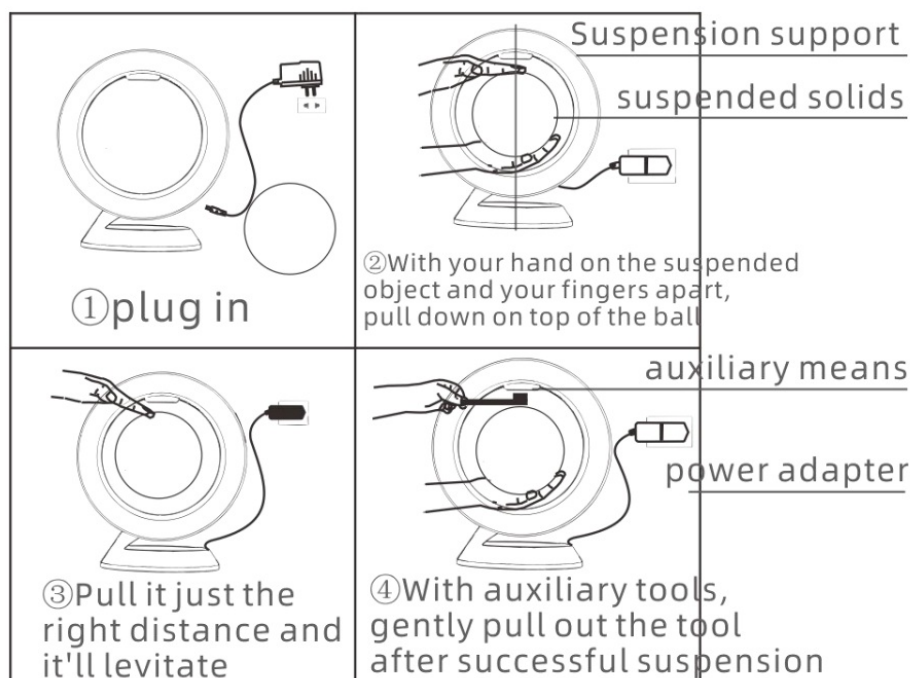
Thank you very much for buying this product!

Follow the instructions below and you will have a magical and amazing experience!

The product list is as follows

1. 1 suspension bracket
2. 1 floating flower ball
3. 1 power adapter
4. 1 copy of manual
5. 1 auxiliary tool

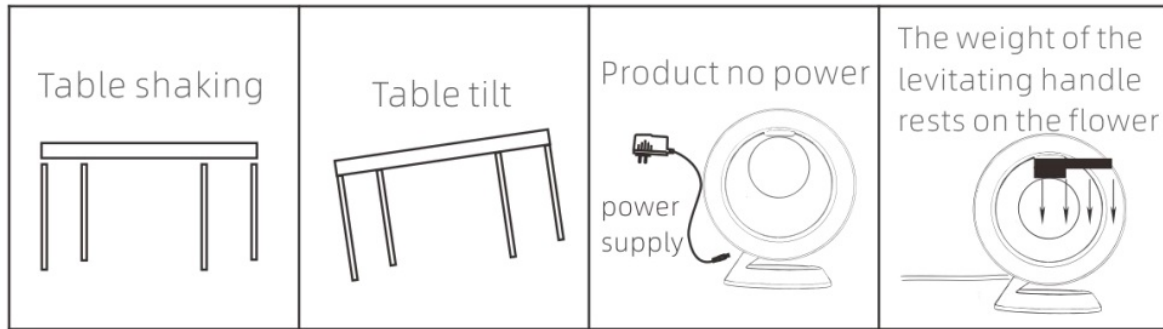
### Operation guidance:



1. Please place the product on a level table. If the table is uneven, the suspended material may not be able to levitate.
2. Plug one end of the power adapter into the power outlet and the other end into the DC hole of the frame.  
Touching the switch on the right side of the product will light up
3. Plug one end of the power adapter into the power outlet and the other end into the DC hole of the frame.  
Touching the switch on the right side of the product will light up

4. As shown in Figure 3, the suspended object can begin to rotate by gently stirring the top of the suspended object with the hand

**The following conditions may cause suspended matter not to be suspended**



This switch is a touch switch identifier.  
Those with this logo on the outer frame have touch switches.  
The light is on or the light is off.



Bluetooth name: CXF-06

**matters need attention:**

The light source of this lamp is not replaceable, please do not disassemble this product yourself, otherwise it will cause damage to the product, and even can not be suspended

Indoor only, do not place on the slope of no more than 6 degrees.

Do not use this product in a humid environment.

If you do not use this product for a long time, please disconnect the power supply

Children under the age of 14 must be supervised by an adult. Please use the power adapter that comes with the product

If you use another power adapter, select a 12V1A certified power supply.

Astigmatism people, children should not look at the product light source for a long time

**FCC Caution:**

This device complies with part 15 of the FCC Rules. Operation is subject to the following two conditions: (1) this device may not cause harmful interference, and (2) this device must accept any interference received, including interference that may cause undesired operation. Any changes or modifications not expressly approved by the party responsible for compliance could void the user's authority to operate the equipment.

**NOTE:** This equipment has been tested and found to comply with the limits for a Class B digital device, pursuant to Part 15 of the FCC Rules. These limits are designed to provide reasonable protection against harmful interference in a residential installation. This equipment generates, uses and can radiate radio frequency energy and, if not installed and used in accordance with the instructions, may cause harmful interference to radio communications. However, there is no guarantee that interference will not occur in a particular installation. If this equipment does cause harmful interference to radio or television reception, which can be determined by turning the equipment off and on, the user is encouraged to try to correct the interference by one or more of the following measures:

- Reorient or relocate the receiving antenna.
- Increase the separation between the equipment and receiver.
- Connect the equipment into an outlet on a circuit different from that to which the receiver is connected.
- Consult the dealer or an experienced radio/TV technician for help.

To maintain compliance with FCC's RF Exposure guidelines, This equipment should be installed and operated with minimum distance between 20cm the radiator your body: Use only the supplied antenna.



Documents / Resources

<div><div>Levitating Bluetooth speaker</div><div>user's manual</div><div>Zhaoping Zhixuan Technology Co., LTD</div><div>Read quickly for detailed product operating instructions</div><div>Read carefully before using the product</div><div>Follow the Assembly Steps and you will have a magical and amazing experience</div><div>The product list is as follows</div></div>	<div><div><a href="#">ZVOLTZ 2BFZ7ZXC Levitating Bluetooth Speaker</a> [pdf] User Manual</div><div>2BFZ7ZXC Levitating Bluetooth Speaker, 2BFZ7ZXC, Levitating Bluetooth Speaker, Bluetooth S</div><div>peaker, Speaker</div></div>
--	---

References

- [User Manual](#)

Manuals+. [Privacy Policy](#)

This website is an independent publication and is neither affiliated with nor endorsed by any of the trademark owners. The "Bluetooth®" word mark and logos are registered trademarks owned by Bluetooth SIG, Inc. The "Wi-Fi®" word mark and logos are registered trademarks owned by the Wi-Fi Alliance. Any use of these marks on this website does not imply any affiliation with or endorsement.