



ZTE MC801A Wifi 6 Router 5g Cpe Wifi Repeater User Guide

[Home](#) » [ZTE](#) » ZTE MC801A Wifi 6 Router 5g Cpe Wifi Repeater User Guide

Contents [[hide](#)]

- 1 ZTE MC801A Wifi 6 Router 5g Cpe Wifi Repeater
- 2 Prepare
- 3 Insert the nano-SIM Card
- 4 Power on Your Device
- 5 Access the Internet
- 6 Change Your Device Settings
- 7 Internet Wi-Fi Function
- 8 Bridge Mode
- 9 WPS
- 10 Indicator Lights and Interfaces
- 11 Troubleshooting
- 12 Getting More Help
- 13 LEGAL INFORMATION
- 14 Warning and Notice
- 15 Cleaning and Maintaining
- 16 Limited Warranty
- 17 Specification
- 18 EU DECLARATION OF CONFORMITY
- 19 Documents / Resources
 - 19.1 References
- 20 Related Posts



ZTE MC801A Wifi 6 Router 5g Cpe Wifi Repeater

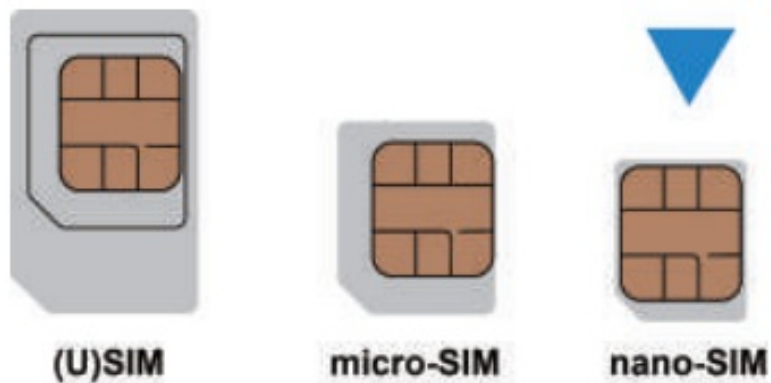


MC801A Let's go

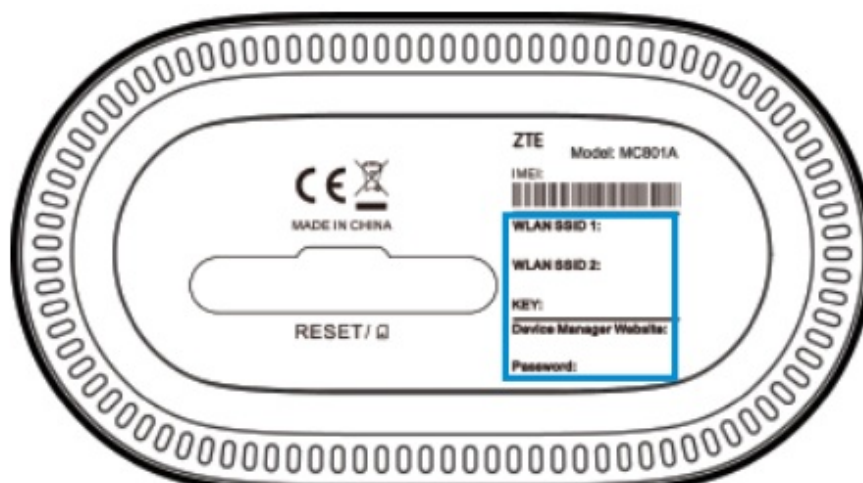
Getting started with your device.

Prepare

- Prepare the valid nano-SIM card provided by the service provider.

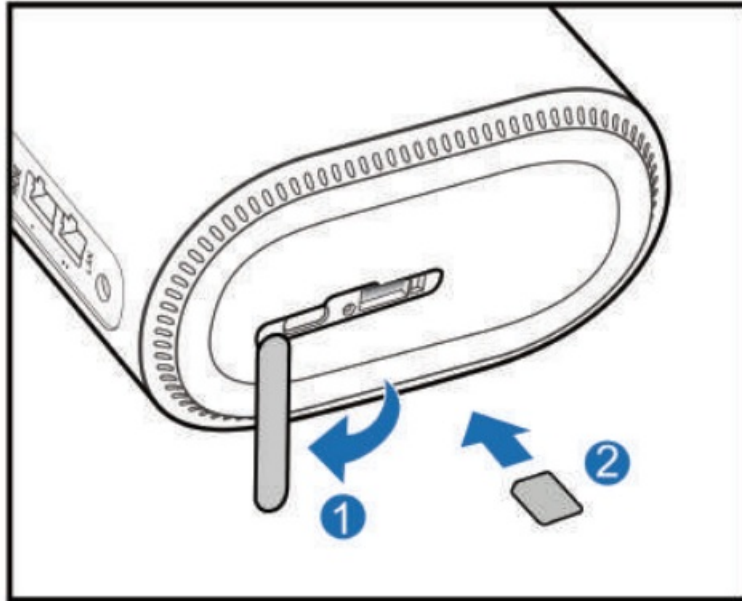


- View the label on your device to get the default information. The following figure is for reference only.



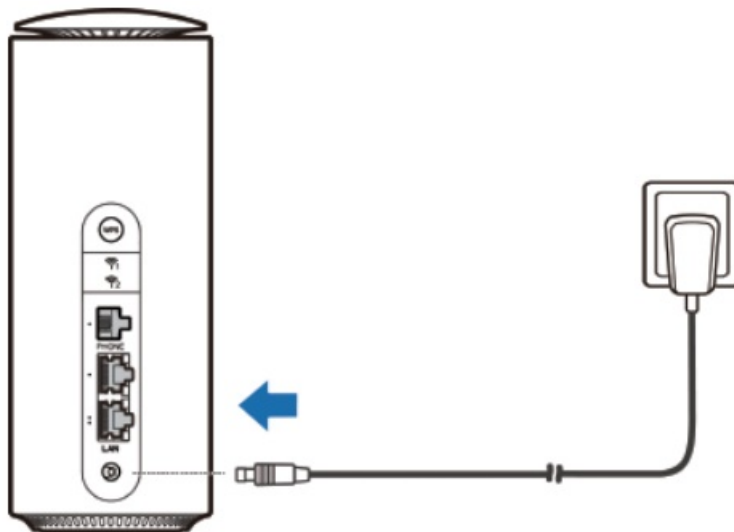
Insert the nano-SIM Card

Open the slot cover at the bottom of the device and insert the nano-SIM card.



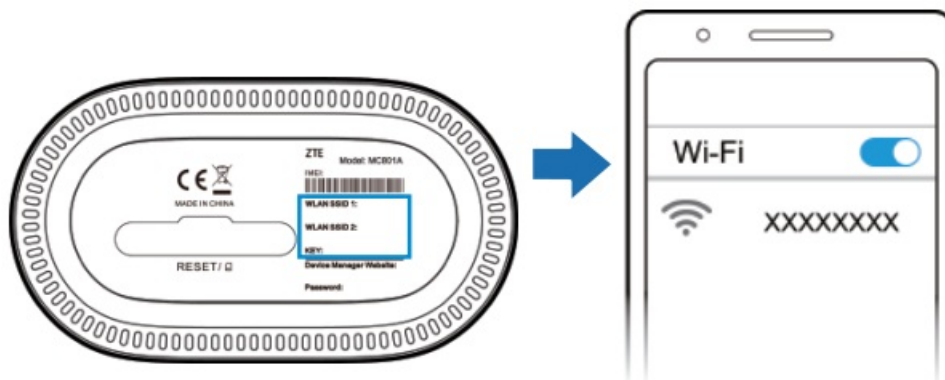
Power on Your Device

Connect the power adapter to your device and then your device will be powered on and connect to the Internet automatically.

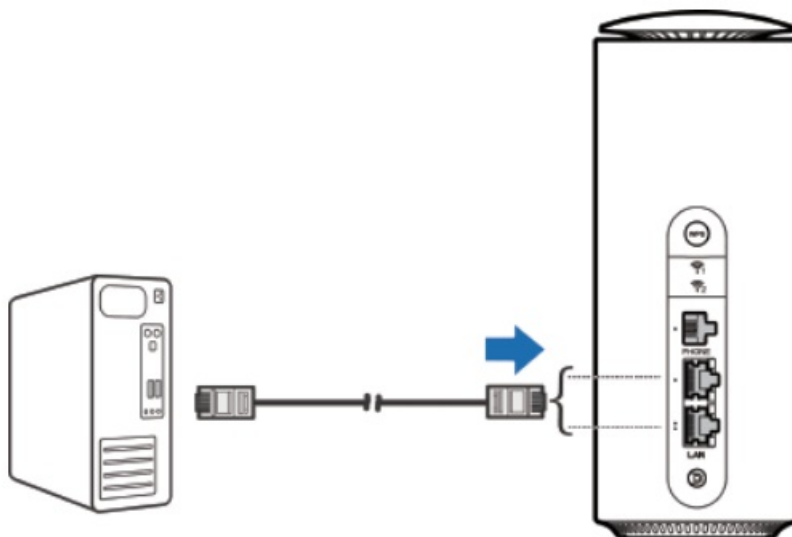


Access the Internet

- Wi-Fi: Get the default SSID and password on the label and connect to the Wi-Fi network with your mobile device, and then access the Internet.



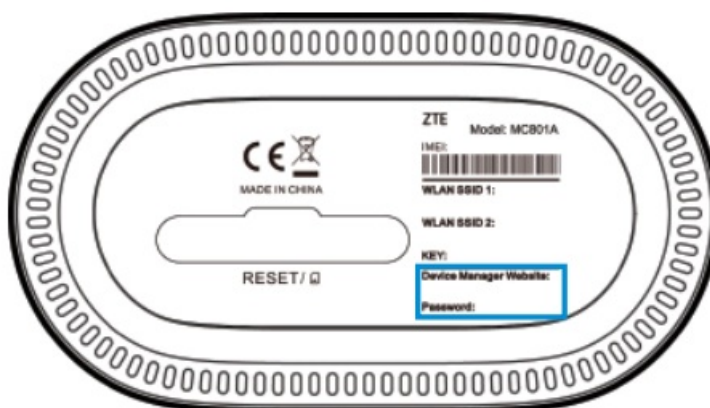
- Network cable(RJ45): Connect with the computer via LAN ports and then access the Internet.



Change Your Device Settings

You can change the device settings by logging in to the 5G CPE configuration web page.

1. View the label on your device to get the default Device Manager Website IP address and Password.



2. Launch the Internet browser and enter the Device Manager Website IP address in the address bar.
3. Input the password and then click Login.
4. After the 5G CPE configuration web page is opened, you can change the Wi-Fi SSID, password or other settings.

Internet Wi-Fi Function

Your device supports the Internet Wi-Fi function and you can use this function to extend your existing Wi-Fi network.

1. Log in to the 5G CPE configuration page.
2. Select Wi-Fi Settings > Internet Wi-Fi.
3. Set the Internet Wi-Fi Switch to Enable, and click Apply.
4. Connect to the Wi-Fi hotspot.

The following two methods are for your reference.

- Select a Wi-Fi hotspot listed in the Wi-Fi Hotspot area and click Connect. Enter a password in the Password text box and click Yes.
 - Click Add Network, enter the Wi-Fi hotspot information in the Add Wi-Fi Hotspot area, and click Apply. Click the Wi-Fi hotspot you have added and then click Connect.
5. After the device is connected to the Wi-Fi hotspot successfully, you can access the Internet.

Bridge Mode

Your device supports the bridge mode and you can use this service from your service provider to access the Internet.

1. Ensure that your device can connect to the Internet by using your nano-SIM card automatically.
2. Log in to the 5G CPE configuration web page.
3. Change the operation mode to Bridge Mode. The device will be restarted automatically.

NOTE:

Please disconnect from the Internet first and then you can change the mode.

4. The first client connected to your device will obtain the IP address from the WAN DHCP host and connect to the Internet directly.

NOTE:

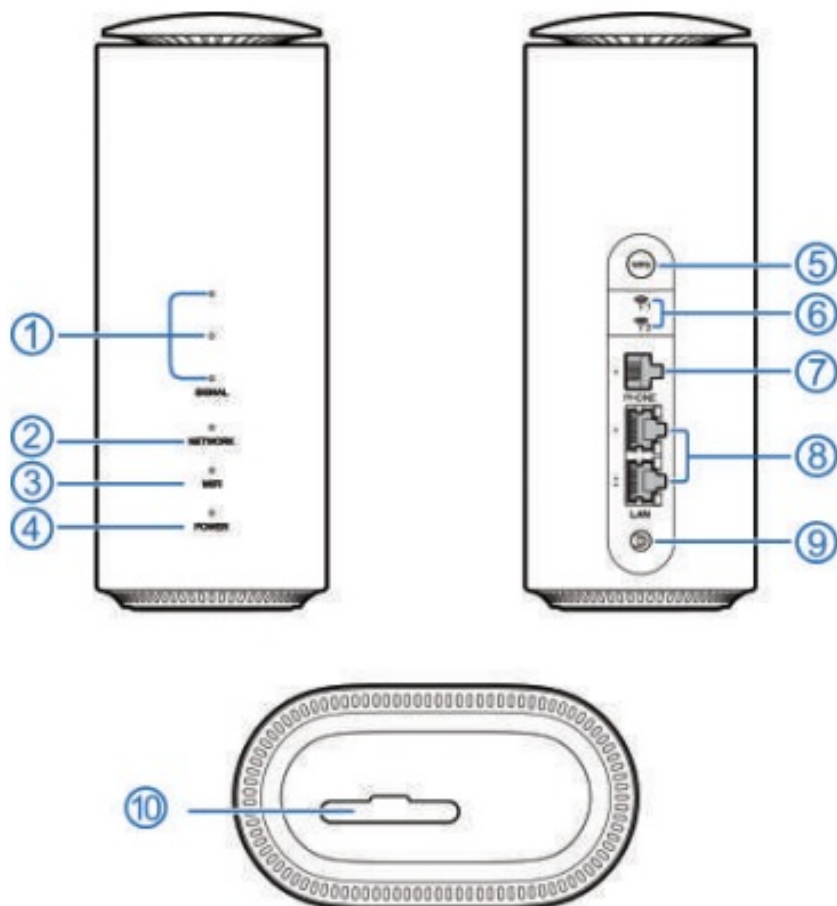
The other clients cannot access the Internet. You can use those clients to log in to the 5G CPE configuration web page.

WPS

Your device supports the WPS function. You can use this function to connect a client to your device.

1. Press the WPS button on your device to activate the WPS function. The WIFI indicator is blinking.
2. Enable the WPS function on your client.
3. Follow the system prompts on your client to establish the connection.

Indicator Lights and Interfaces



1. **SIGNAL (Three lights)**

On: Three lights show the signal strength. More lights on means better signals.

Off: There is no signal or no nano-SIM card inserted.

2. **NETWORK**

Red: The device is powered on but not registered to the mobile network.

Blue solid: The device is registered or connected to the 3G/4G mobile network.

White solid: The device is registered or connected to the 5G network.

3. **WIFI**

On: WLAN(Wi-Fi) works normally. Blinking: WPS is activating.

Off: WLAN(Wi-Fi) is off.

4. **POWER**

On: The device is powered on.

Off: The device is powered off.

5. **WPS key**

Press this key to activate the WPS function.

6. **External antenna port**

Connect to external antennas. The antenna connector type is TS-9 and antenna frequency range is from 700 MHz to 4200 MHz.

7. **PHONE port**

This port is not active and cannot be used.

8. **LAN ports**

LAN1 port: Connect to the WAN in the Cable Broadband

Mode. LAN2 port: Connect to a PC.

9. Power port

Connect to the power adapter.

10. nano-SIM card slot and reset hole

Insert your nano-SIM card.

Reset hole: Press and hold for about 3 seconds to restore your device to the factory settings.

Troubleshooting

Internet Related Problems

Symptoms	Possible Problems / Solutions
I cannot access the Internet at all.	<ul style="list-style-type: none">• Please check your configuration settings.• Please wait 1~ 2 minutes for the router to initialize.• Check your network indicators.
The download or upload speed is very slow.	<ul style="list-style-type: none">• The speed is dependent on signal strength. Check your signal strength and network type.
I cannot visit the 5G CPE configuration web page.	<ul style="list-style-type: none">• Enter the correct IP address. You can view the label on your device to get the default IP address.• Only use one network adapter in your PC.• Do not use any proxy server.
I cannot establish the Wi-Fi connection between my device and the client.	<ul style="list-style-type: none">• Make sure the Wi-Fi function is active.• Refresh network list and select the correct SSID.• Check the IP address to make sure your client can obtain an IP address automatically in the Internet protocol (TCP/IP) properties.• Type the correct network key (Wi-Fi password) when you connect to the device.

Others

Symptoms	Possible Problems / Solutions
The signal indicator does not light.	<ul style="list-style-type: none">• This indicates poor reception. Try moving the device to another location near the window.
Problems with the passwords.	<ul style="list-style-type: none">• For the default Wi-Fi connection password and the default password of the 5G CPE configuration web page, please check the label on the device.• If you changed the passwords and forgot them, you need to restore the device to the factory default settings.

Getting More Help

If you experience some troubles with your Internet for home service you could get help by calling Telenor Customer Service at +35989123.

LEGAL INFORMATION

Copyright © 2021 ZTE CORPORATION.

All rights reserved.

No part of this publication may be quoted, reproduced, translated or used in any form or by any means, electronic

or mechanical, including photocopying and microfilm, without the prior written permission of ZTE Corporation.

Notice

ZTE Corporation reserves the right to make modifications on print errors or update specifications in this guide without prior notice.

Disclaimer

Images and screenshots used in this guide may differ from the actual product. Content in this guide may differ from the actual product or software.

Trademarks

ZTE and the ZTE logos are trademarks of ZTE Corporation.

Other trademarks and trade names are those of their respective owners.

Version No.: R1.1

Warning and Notice

Safety Precautions

- Some electronic devices may be susceptible to electromagnetic interference. Locate the device away from TV set, radio and other electronic equipment to avoid electromagnetic interference.
- The device may interfere with medical devices like hearing aids and pacemakers. Consult a physician or the manufacturer of the medical device before using it.
- Please keep yourself at least 20 centimeters away from your device.
- Do not use your device in dangerous environments such as oil terminals or chemical factories where there are explosive gases or explosive products being processed.
- Please use original accessories or accessories that are authorized by ZTE. Unauthorized accessories may affect the device performance, damage the device or cause danger to you.
- Do not attempt to dismantle the device. There are no user-serviceable parts.
- Do not allow the device or accessories to come into contact with liquid or moisture at any time. Do not immerse the device in any liquid.
- Do not place objects on top of the device. This may lead to overheating of the device.
- The device must be placed in a well-ventilated environment for use.
- Do not expose the device to direct sunlight or store it in hot areas. High temperature can shorten the life of electronic devices.
- Do not allow children to play with the device or power adapter.
- The device is for indoor use only. Do not use the device outside.
- For pluggable equipment, the socket-outlet shall be installed near the equipment and shall be easily accessible.

Cleaning and Maintaining

- Use an antistatic cloth to clean the device. Do not use chemical or abrasive cleanser as these could damage the plastic case. Turn off your device before you clean it.
- Use the device within the temperature range of -20°C ~ +55°C, and the storage temperature range is -40°C ~ +70°C. The humidity range is 5%~95%.
- Do not use your device during a thunderstorm. Remove the mains power pack from the wall socket.

Limited Warranty

This warranty does not apply to defects or errors in the product caused by:

- i. Reasonable abrasion.
- ii. End users' failure to follow ZTE's installation, operation or maintenance instructions or procedures.
- iii. End users' mishandling, misuse, negligence, or improper installation, disassembly, storage, servicing or operation of the product.
- iv. Modifications or repairs not provided by ZTE or a ZTE-certified individual.
- v. Power failures, surges, fire, flood, accidents, and actions of third parties or other events outside ZTE's reasonable control.
- vi. Usage of third-party products or usage in conjunction with third-party products if such defects are due to the combined usage.
- vii. Any other cause beyond the range of normal usage intended for the product.

End users have no right to reject or return the product, or receive a refund for the product from ZTE under the above-mentioned situations. This warranty is end users' sole remedy and ZTE's sole liability for defective or nonconforming items, and is in lieu of all other warranties, expressed, implied or statutory, including but not limited to the implied warranties of merchantability and fitness for a particular purpose, unless otherwise required under the mandatory provisions of the law.

Limitation of Liability

ZTE shall not be liable for any loss of profits or indirect, special, incidental or consequential damages resulting from or arising out of or in connection with using of this product, no matter whether or not ZTE had been advised, knew or should have known of the possibility of such damages, including, but not limited to lost profits, interruption of business, cost of capital, cost of substitute facilities or product, or any downtime cost.

RF Exposure

This equipment complies with CE radiation exposure limits set forth for an uncontrolled environment. This equipment should be installed and operated with minimum distance of 20 cm between the radiator and your body.

Specification

EUT supports radios application	WCDMA Band 1/8 FDD LTE Band 1/3/7/8/20/28 5G NR N7/N28/N77/N78 802.11a/b/g/n/ac/ax
	WCDMA Version Rel.9 LTE Version Rel.14 5G NR Version Rel.15
	WCDMA Band 1:24 dBm
	WCDMA Band 8:24 dBm
	LTE Band 1:23 dBm
	LTE Band 3: 23 dBm
Maximum RF output power	LTE Band 7: 23 dBm LTE Band 8: 23 dBm LTE Band 20: 23 dBm
	LTE Band 28: 23 dBm
	5G NR N7/N28/N77/N78:23 dBm
	Wifi 2.4G:16.82 dBm
	Wifi 5G:18.17 dBm

CE Caution

Proper Use

As described in this guide, your device can be used only in the right location. If possible, please do not touch the antenna area on your device.

Disposal of Your Old Appliance



1. When this crossed-out wheeled bin symbol is attached to a product, it means the product is covered by the European Directive 2012/19/EU.
2. All electrical and electronic products should be disposed of separately from the municipal waste stream via designated collection facilities appointed by the government or the local authorities.
3. The correct disposal of your old appliance will help prevent potential negative consequences for the environment and human health.

For this product's recycling information based on WEEE directive, please send an e-mail to weee@zte.com.cn

EU DECLARATION OF CONFORMITY



Hereby, ZTE Corporation declares that the radio equipment type ZTE MC801A is in compliance with Directive 2014/53/EU.

The full text of the EU declaration of conformity is available at the following Internet address:

<https://certification.ztedevices.com>


The device is restricted to indoor use only when operating in the 5150 to 5350 MHz frequency range.

	AT	BE	BG	HR	CY	CZ	DK
	EE	FI	FR	DE	EL	HU	IE
	IT	LV	LT	LU	MT	NL	PL
	PT	RO	SK	SI	ES	SE	UK(NI)

ZTE CORPORATION

NO. 55, Hi-tech Road South, Shenzhen, P.R.China Postcode: 518057

Documents / Resources

 MC801A Let's go Getting started with your device.	ZTE MC801A Wifi 6 Router 5g Cpe Wifi Repeater [pdf] User Guide MC801A Wifi 6 Router 5g Cpe Wifi Repeater, MC801A, Wifi 6 Router 5g Cpe Wifi Repeater, Cpe Wifi Repeater, Wifi Repeater
---	---

References

-  [EU Declaration of Conformity](#)