



ZSCMALLS Portable Monitor V1.0 User Guide

[Home](#) » [ZSCMALLS](#) » ZSCMALLS Portable Monitor V1.0 User Guide 

Contents

- [1 ZSCMALLS Portable Monitor V1.0](#)
- [2 Package List](#)
- [3 Introduction](#)
- [4 Connect Devices](#)
- [5 Mode setting](#)
- [6 How to adjust the brightness](#)
- [7 Supported Devices and Models](#)
- [8 FAQ](#)
- [9 Documents / Resources](#)
 - [9.1 References](#)



ZSCMALLS Portable Monitor V1.0



Package List

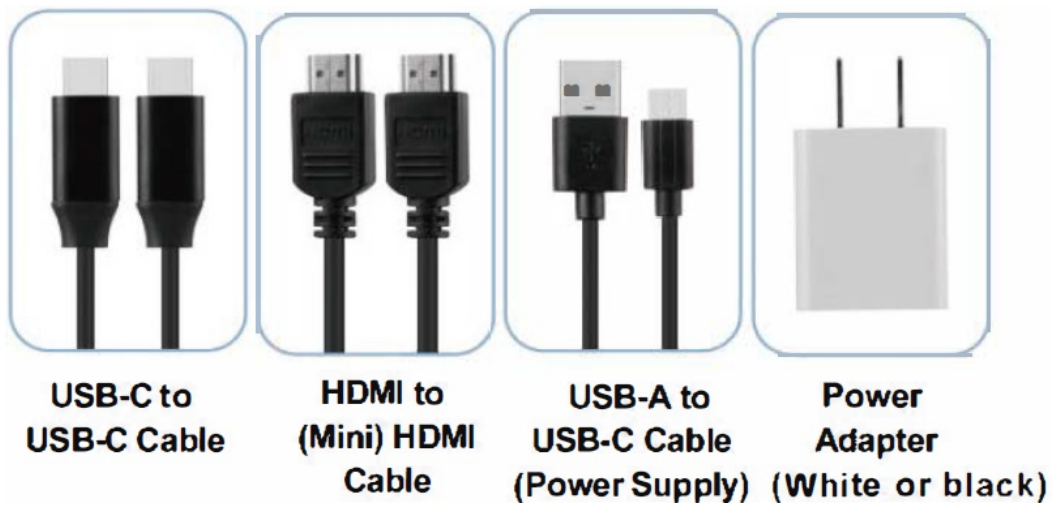


Portable Monitor

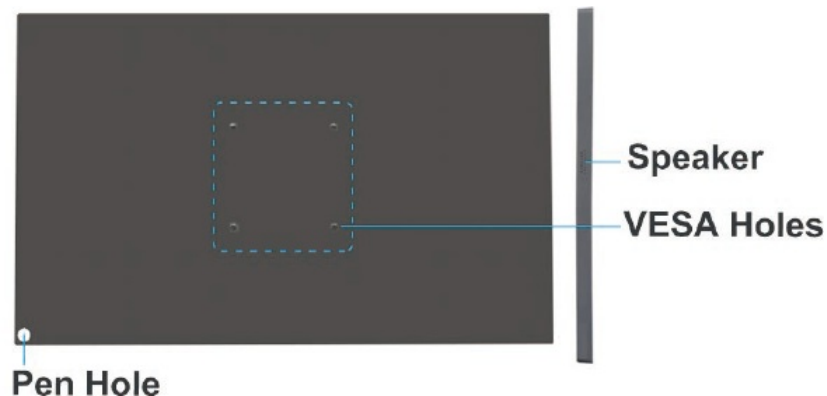
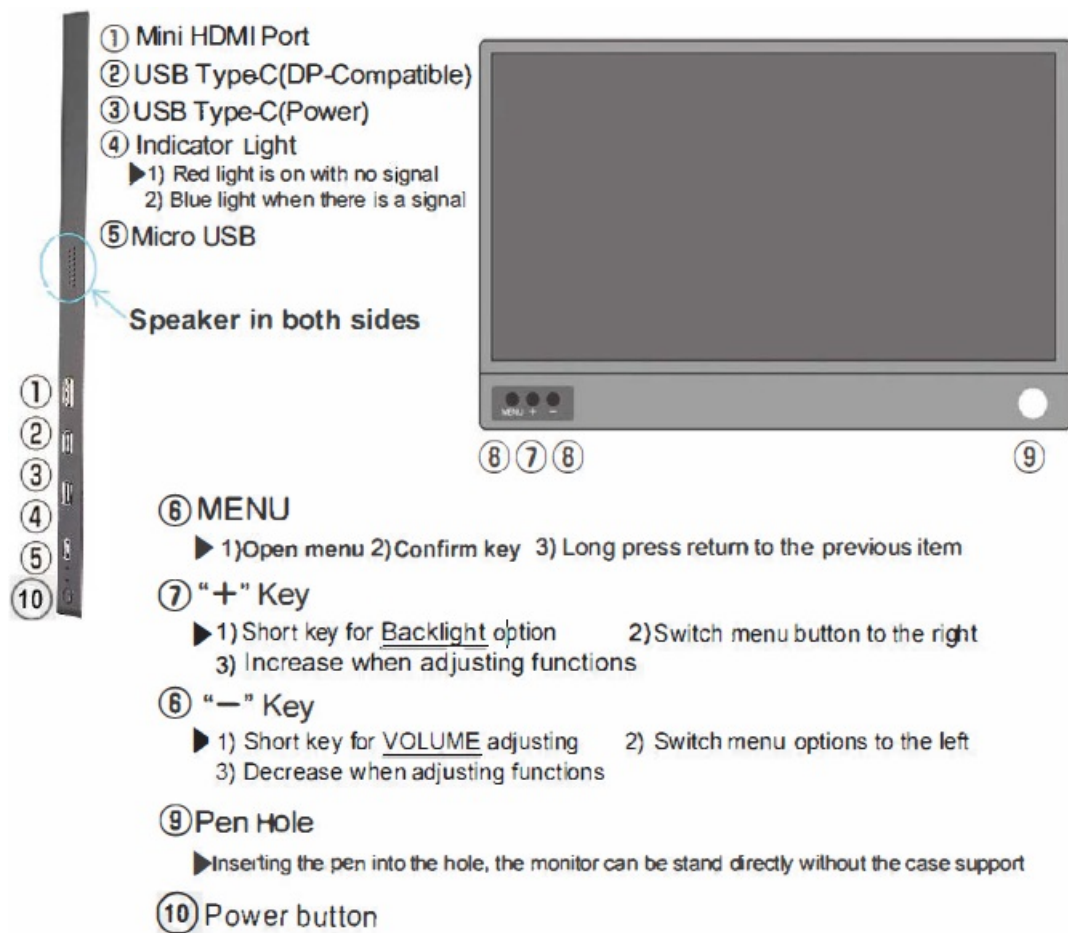


Elegant corner

(On the back with two screws) (Removale as required)



Introduction





Connect Devices

Connect with External Power Supply

Connect the monitor to the power adapter with the USB-A to USB-C cable and plug in the USB-C to USB-C cable or HDMI to (Mini) HDMI cable for video and audio output.

Connect without External Power Supply

Method 1: Works with full-function USB-C port. Please plug in the USB-C to USB-C cable to the USB-C full-featured port and make sure the USB-C port of your device is full-featured(It's USB3.1 Gen2 or above)

Method 2: Connect your devices to our monitor with USB-A to USB-C cable for power supply. Please make sure your devices can supply enough power(20W or above). Connect your devices to our monitor with HDMI to (Mini) HDMI cable for video and audio output at the same time.

Note: This monitor does not have a built-in battery. Before connecting the monitor, please make sure there is enough power(20W or above) supply.

USB-C Laptop



Please Connect External Power Supply if:

1. Brightness or volume is greater than 80%.
2. The USB-C cable is not full featured.

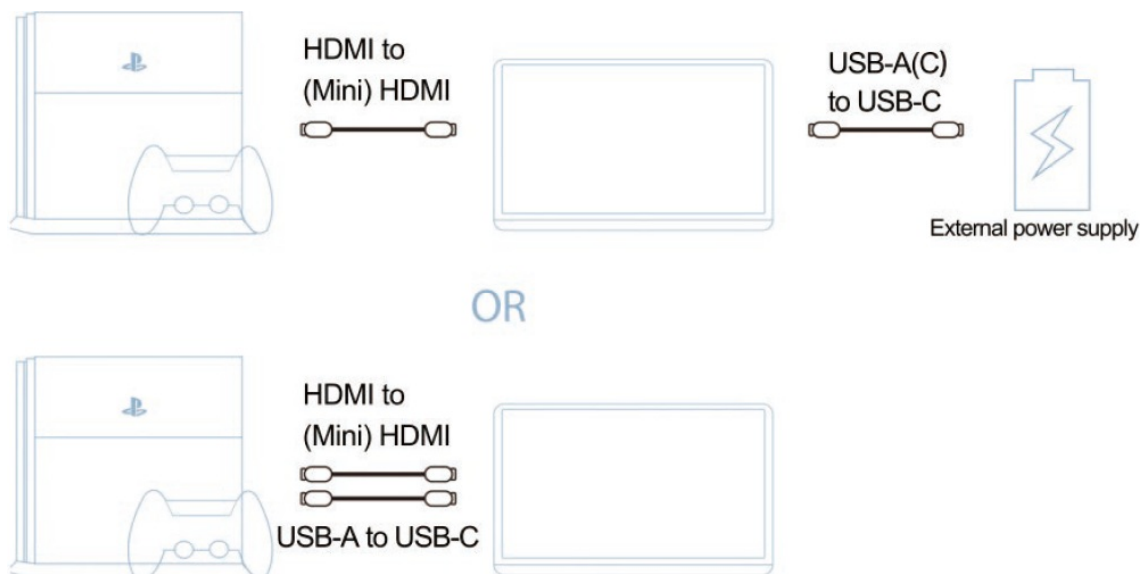
Note: Not all laptops can work with this portable monitor with one USB-C cable. Please check if your laptop has full-featured USB-C port(It's USB3.1 Gen2 or above)

HDMI Laptop



Note: HDMI port does not supply power transmission. The monitor needs an external power supply (20W or above) or connect laptop with USB-A to USB-C cable to supply power (Make sure your laptop can supply 20W or above power).

Other Devices(HDMI)



Note: Please connect the external power supply first before you connect the HDMI cable.

Phone(USB-C)



Some phones capable of supplying 20W+ of power can support the monitor. It is suggested that the brightness of your monitor is less than 30% or plug it should be plugged in to a 20W+ external power supply.

If plugged in a 20W+ external power, the monitor can charge the phone.

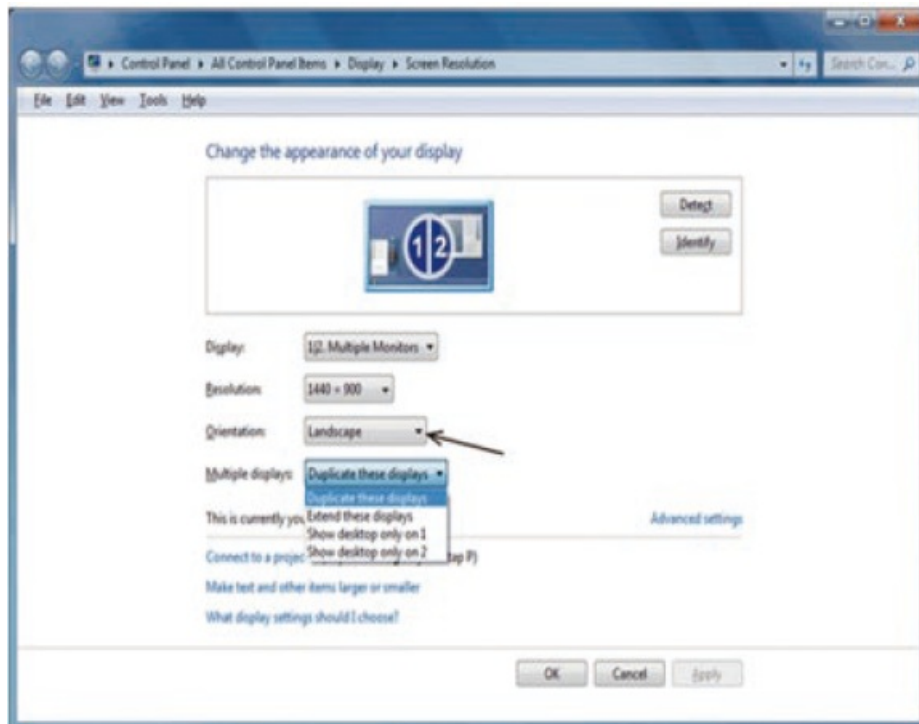
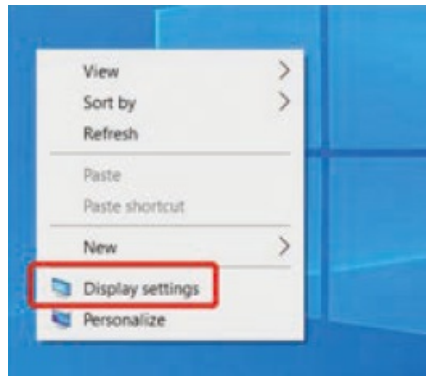
Note: Only works directly with cellphone through full-function USB-C port. For iPhone: need a lightning to HDMI adaptor.

Mode setting

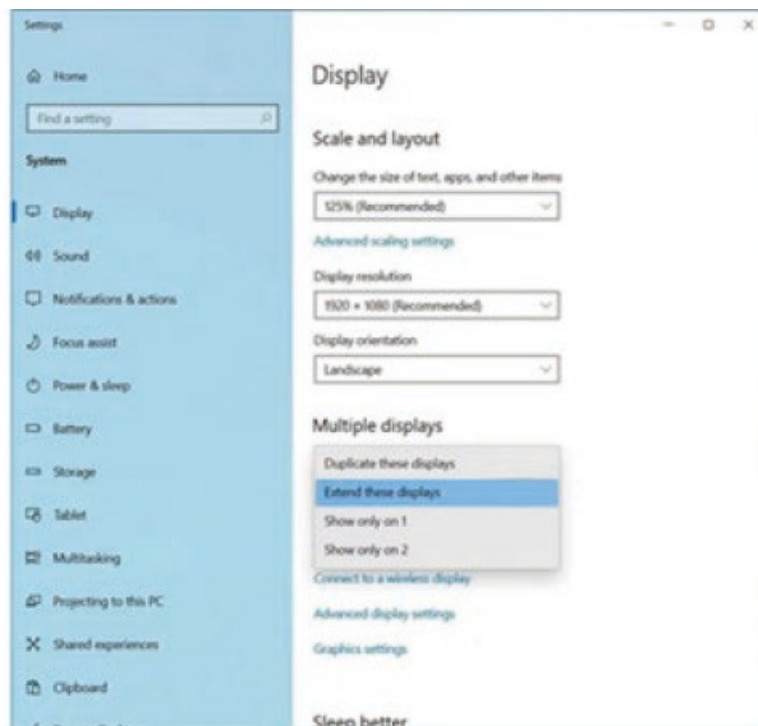
Multiple-Display Setting for Windows

1. Right-click the desktop and select either Screen Resolution (Windows 7/8) or Display Settings (Windows 10).
You can also use hotkey of Windows.+ P (Windows 7/8/10).
2. **Duplicate & Extend Mode Setting:** Click the Multiple displays drop-down list, and then select Extend/Duplicate to project on to monitor.

Note: If you cannot see the additional monitor listed, click Detect. If does not work, please check if your laptop/PC has this function or there is a problem with the connection to our monitor.



Windows7

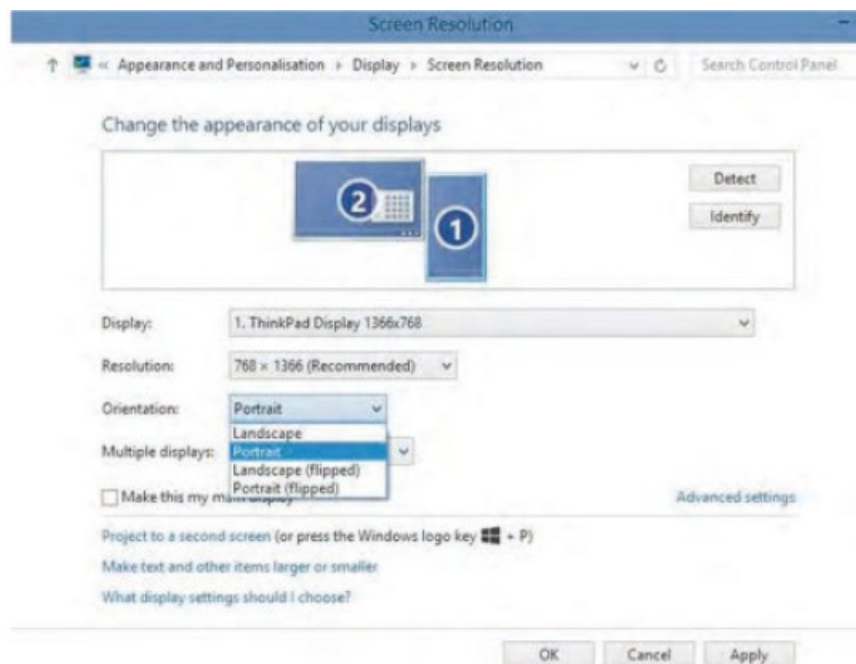


Windows10

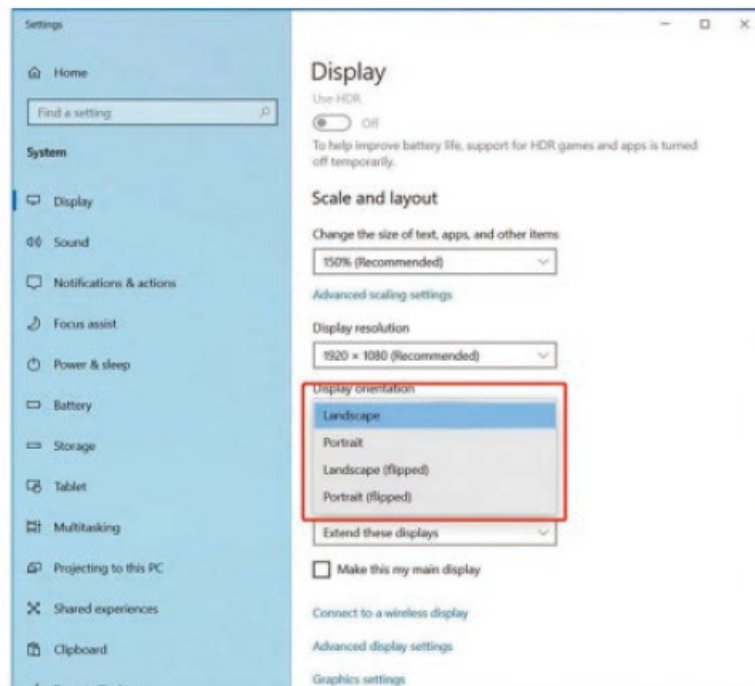
Screen Rotate Setting

1. Right-click the desktop and select either Screen Resolution (Windows 7/8) or Display Settings (Windows 10).
2. Click the second screen and click the orientation drop-down list. Select Landscape or portrait screen.

Note: If you cannot see the option of orientation on your laptop/PC, please check if your laptop/PC has this function or there is a problem with the connection to this portable monitor.



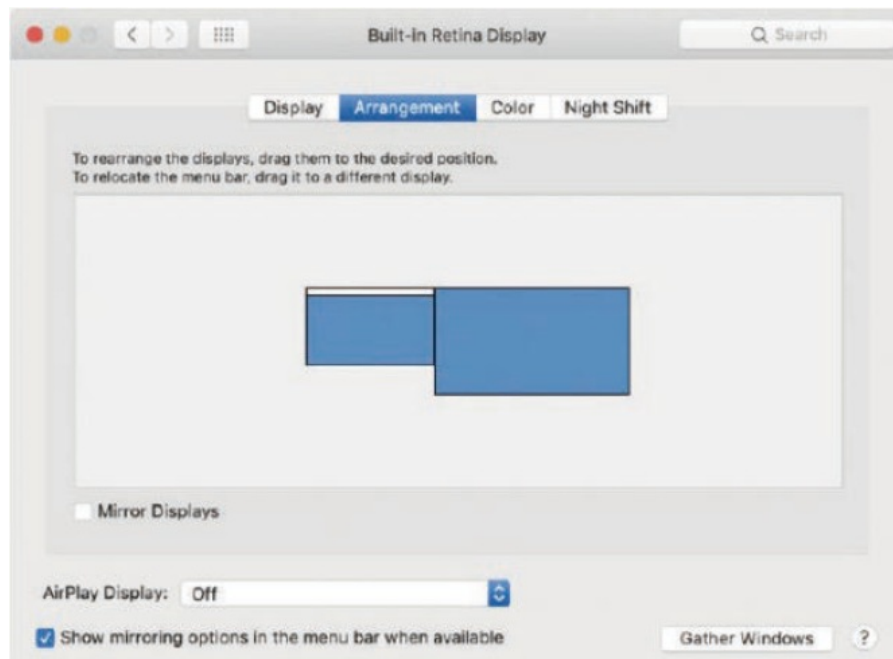
Windows7



Windows10

Multiple-Display Setting for Mac

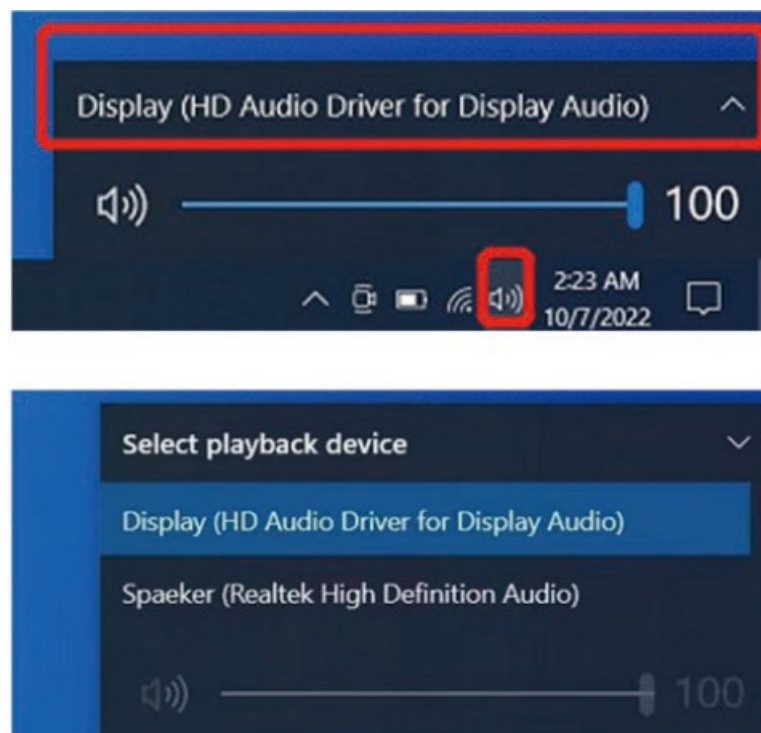
1. Choose Apple menu > System Preferences, then click Displays.
2. Click the Arrangement tab.
3. To change the position of a display, drag it to the desired position. A red border appears around the display as it is movable.



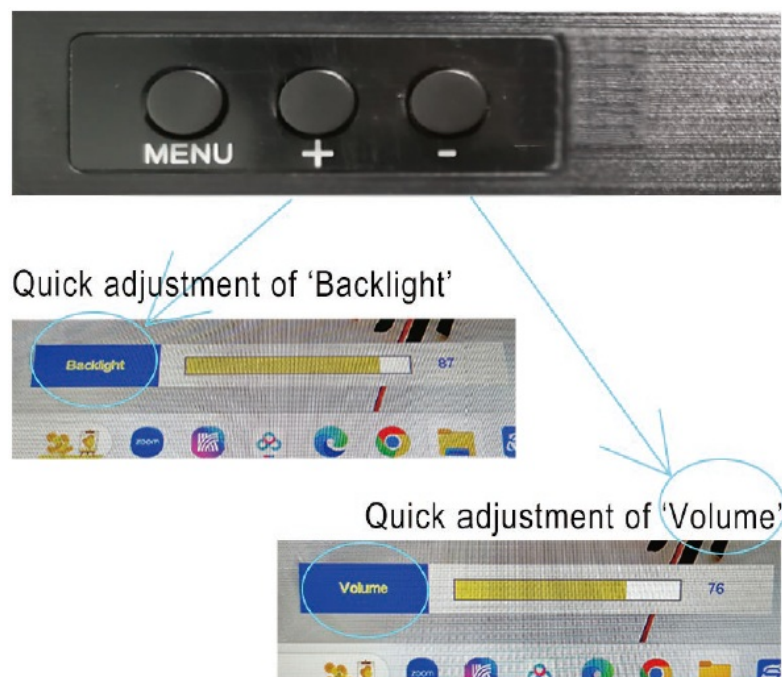
Speaker Setting

1. Click speaker button in the lower right corner.
2. Select laptop or monitor to use to play the sound (the monitor plays the sound by default).
3. For a better experience, please set the laptop to play sound or use headphones with 3.5mm headphone jack of

the monitor.



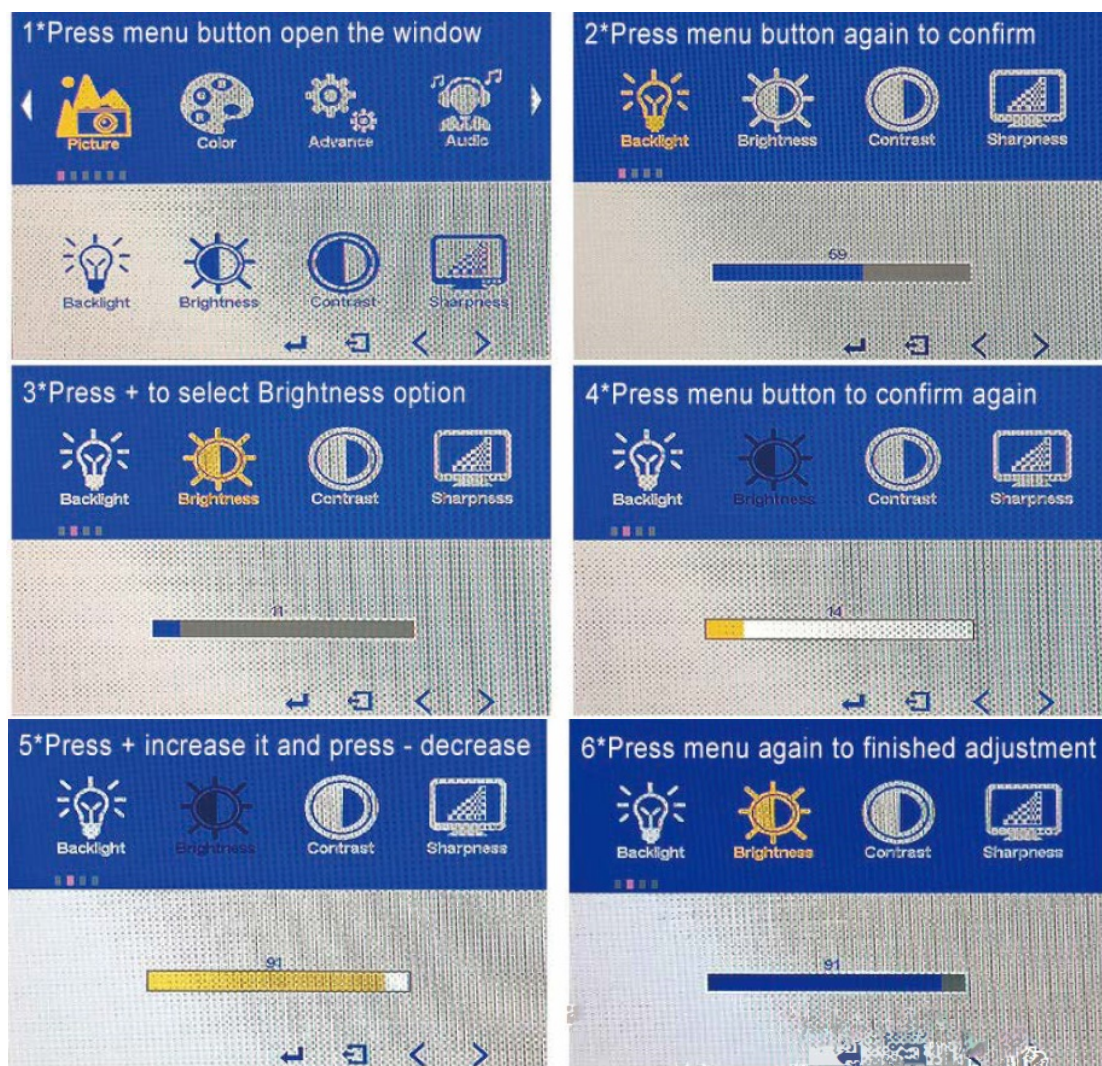
Two Shortkeys + & -



How to adjust the brightness

Please pay more attention to these steps!





Supported Devices and Models

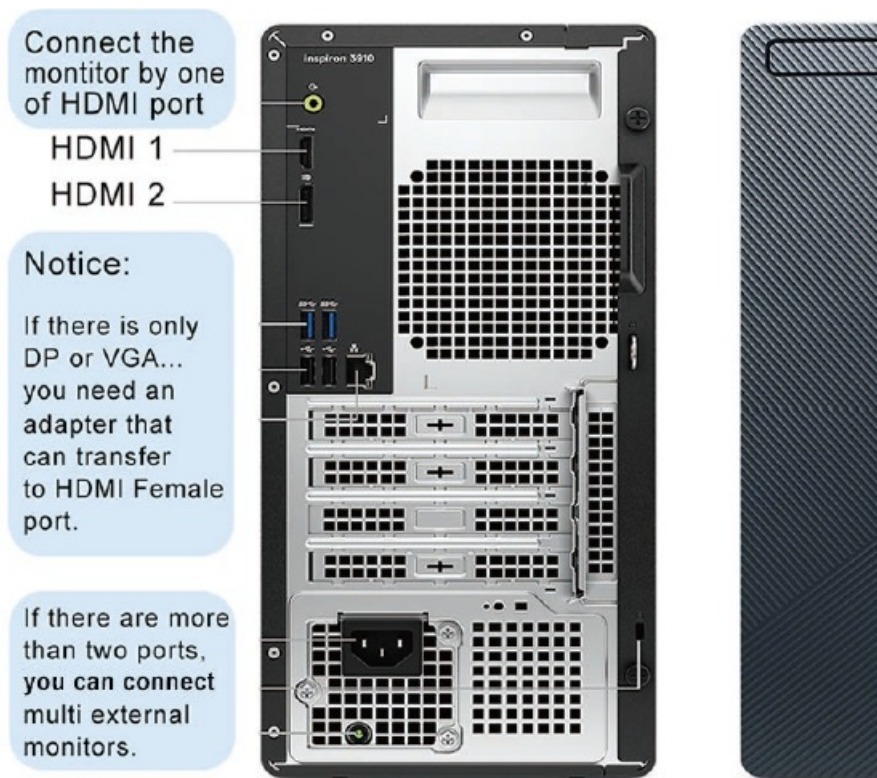
Laptop

Brand	Model
Apple	MacBook 12 in, MacBook Pro 2019/2020/2021, MacBook Air 2018, iPad Pro 2019/2020/2021
Google	Chromebook Pixels, Pixelbook Pen
Lenovo	Savior Y7000, Savior Y7000P, Savior Y9000K, YOGA 6 Pro, ThinkPad X1 Carbon, Yoga 5 Pro, Miix 720
DELL	G3 Series, GS Series, G7 Series, Inspiron 5000, Inspiron 7000, XPS13, XPS15, Inspiron 7000, XPS13, XPS15
HP	EliteBook 1050G1, EliteBook Folio G1, Omen 4 Pro, Pavilion X2
Microsoft	Surface Book 2
ASUS	Lingyao 3, U306, U321 Series, U4100, ROG Series
HUAWEI	MateBook D
Razer	Blade Stealth
More Brands	Updating

Phone

Brand	Model
SAMSUNG	DEX, S10/S20/S21/S22 Series, Note 9/Note 10/Note 11 Series
HUAWEI	Mate 20/Mate 30/Mate 40 Series, Mate RS, P30/P40/P50 Series
HONOR	Note 10, V20N30N40 Series
OPPO	R17 Pro, Reno, Find Razer phone, Razer Phone 2
HTC	U Ultra
LG	GS, G6, G7
ASUS	ROG Gaming Phone
More Brands	Updating

Some type of Hosts



FAQ

Question	Possible Solution
Can't connect	<ul style="list-style-type: none"> • Please check that the monitor and the computer are in the "ON" mode. • Please check that cable is properly connected in monitor and your devices. • Please check that it is connected to a full featured USB-C port or connect HDMI port to get audio and video transmission. • Please check the monitor has been powered by your device. If still not, use our power adapter or other 20W+ power adapter. • Please connect the monitor with other available devices to check if it can work. • If it still can't connect, please contact our support team.
Can't adjust brightness/ volume	Please restart the monitor or contact us by Amazon messages.
The screen flickers in various colors when starting	Press the power button turn off the monitor, then press it for 3s to restart the monitor.

Power LED is not ON.	<ul style="list-style-type: none"> • Please make sure that the monitor is connect with our power adapter (or other power supply above 20W) or full function USB- C port of your device. • Please hold the power button for 3s to check if the monitor is in the "ON" mode. • Please check if the USB cable is properly connected to the monitor and the power adapter.
Shows "No Signal" "Power Saving" after a certain period of time.	<ul style="list-style-type: none"> • Please check if your device work. • Please check if the cable is loose, re-plug them and make sure they are connected correctly. • Please replace the cable with a new one and see if the same thing happens.
	<ul style="list-style-type: none"> • Please check that connect full featured USB-C port or connect HDMI port to get audio and video transmission.
Screen image bounces or a wave pattern is present in the image.	<ul style="list-style-type: none"> • Please check the USB cable is properly connected. • Move electrical devices that may cause electrical interference.
Any other issues	<ul style="list-style-type: none"> • Please contact our support team at any time.

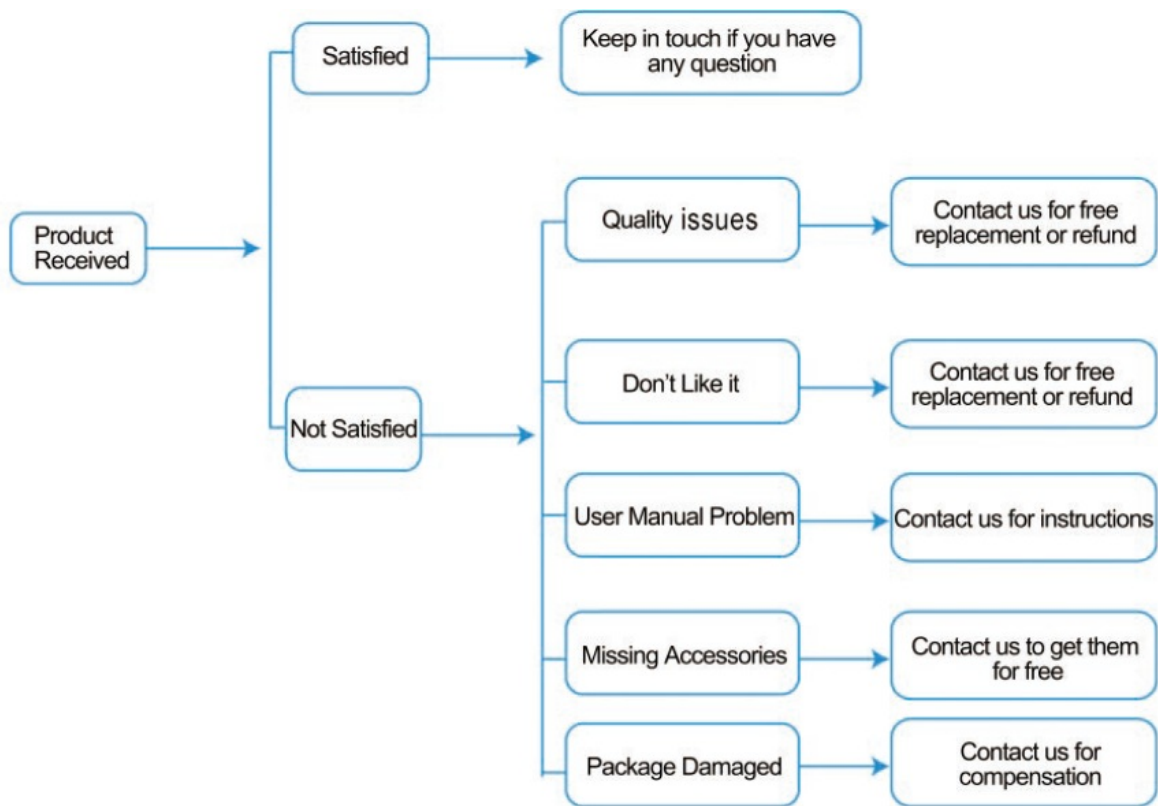
Semlice Support

Dear Customer,

Thank you for choosing our monitors.

If you still have any issues, please feel free to contact us. We stand by our products and guarantee your satisfaction.

portable-monitor@foxmail.com

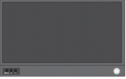



Notices

Before setting up the monitor, carefully read all the instructions

- Please use it at a working temperature of 0-50°.
- Never expose the monitor to rain or moisture for your safety.
- Never attempt to open the monitor cabinet.
- Before using, make sure all the cables are correctly connected and power cable is not damaged. If you get the damaged monitor or cable, please contact us immediately.
- Avoid dust, humidity, and temperature extremes. Do not place in any area where it may be wet.
- Place the monitor on a stable surface.
- Never push objects or spill liquid of any kind into the slots on the monitor cabinet.

Documents / Resources

<div>Portable Monitor Instruction Manual-V1.0</div> <div></div> <div> portable-monitor@foxmail.com</div>	<div>ZSCMALLS Portable Monitor V1.0 [pdf] User Guide</div> <div>Portable Monitor V1.0, Portable Monitor, V1.0</div>
--	---

References

- [User Manual](#)