

ZKTECO[®] V5L-IG High Speed Biometric Access Control Terminal



ZKTECO V5L-IG High Speed Biometric Access Control Terminal Installation Guide

[Home](#) » [ZKTECO](#) » ZKTECO V5L-IG High Speed Biometric Access Control Terminal Installation Guide 

Contents

- [1 ZKTECO V5L-IG High Speed Biometric Access Control Terminal](#)
- [2 Product Information](#)
- [3 Product Usage Instructions](#)
- [4 About the Device Installation](#)
- [5 How to Install](#)
- [6 Documents / Resources](#)
 - [6.1 References](#)
- [7 Related Posts](#)



ZKTECO V5L-IG High Speed Biometric Access Control Terminal



Product Information

Specifications:

- Product Name: SpeedPalm-V5L
- Version: 1.0
- Installation: Indoor use only
- Effective Distance: 0.3 to 2m
- Manufacturer: ZKTeco

Product Usage Instructions

About the Device Installation:

Please follow these recommendations for installation:

- Install indoors only
- Keep an effective distance of 0.3 to 2m
- Avoid installation near glass windows
- Avoid direct sunlight and exposure
- Avoid use of any heat source near the device

Tips for Device Maintenance:

Avoid direct contact with sunlight for a long time. Protect the device from moisture, water, and rain. Handle the device with care. Ensure the device is not installed near the sea or in locations prone to metal oxidation and rust.

Protect from lightning. Avoid usage in acidic or alkaline environments for extended periods.

How to Install the Device on the Wall:

1. Stick the mounting template to the wall and drill holes according to the template.
2. Insert the expansion tubes into the mounting holes.
3. Attach the backplate on the wall using wall mounting screws.
4. Attach the terminal to the backplate.
5. Fasten the terminal to the backplate with a security screw.

FAQs

- **Q: Can this device be used outdoors?**

A: No, this device is designed for indoor use only.

- **Q: What is the recommended distance for effective performance?**

A: Keep the effective distance between 0.3 to 2 meters for optimal functioning.

- **Q: How should I handle the device during installation?**

A: Handle with care, avoid direct sunlight, and moisture, and maintain a safe distance from heat sources.

About the Device Installation

Please refer to the following recommendations for installation.

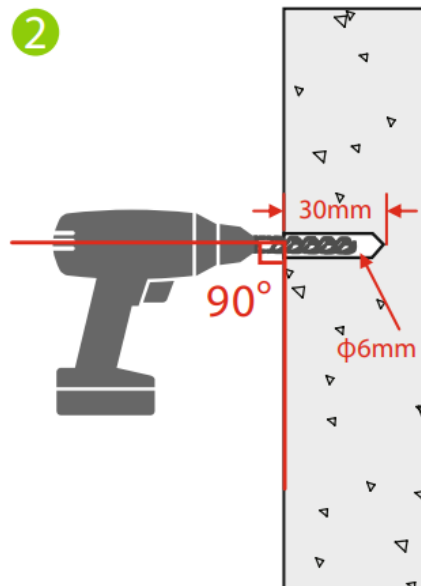
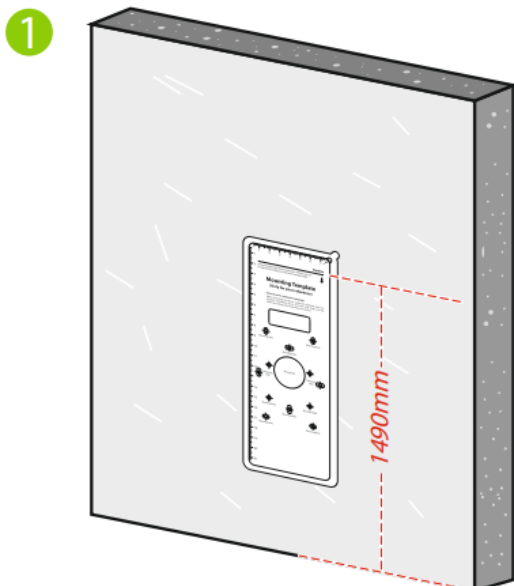


- Avoid direct contact to sunlight for a long time.
- Protect the device from moisture, water, and rain.
- Handle the device with care.
- Ensure that the device is not installed near the sea or in other locations where metal oxidation and rust may develop if the device is exposed for an extended period.
- Protect the device from lightning.
- Avoid using the device in acidic or alkaline environments for extended periods.

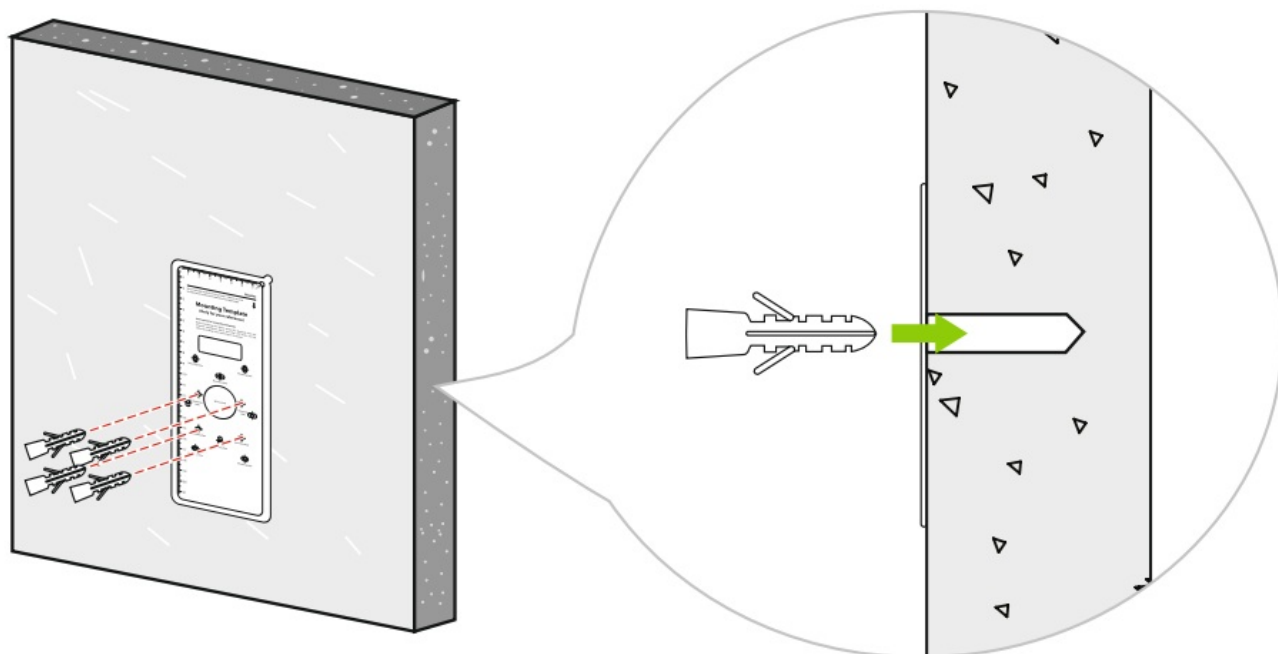
How to Install

How to Install the Device on the Wall?

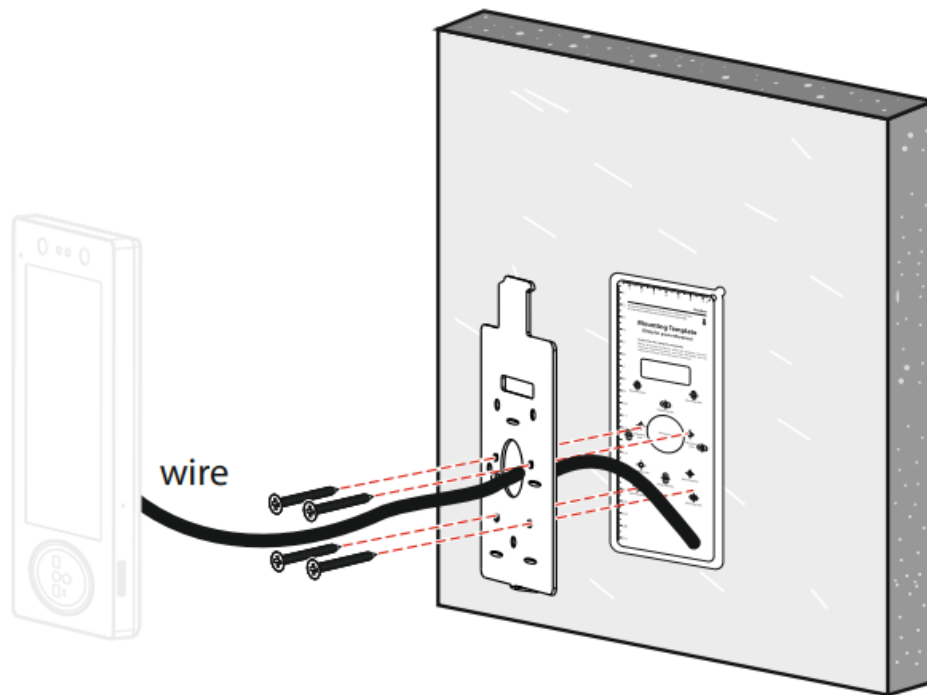
- Step 1: Stick the mounting template to the wall and drill holes according to the mounting template.



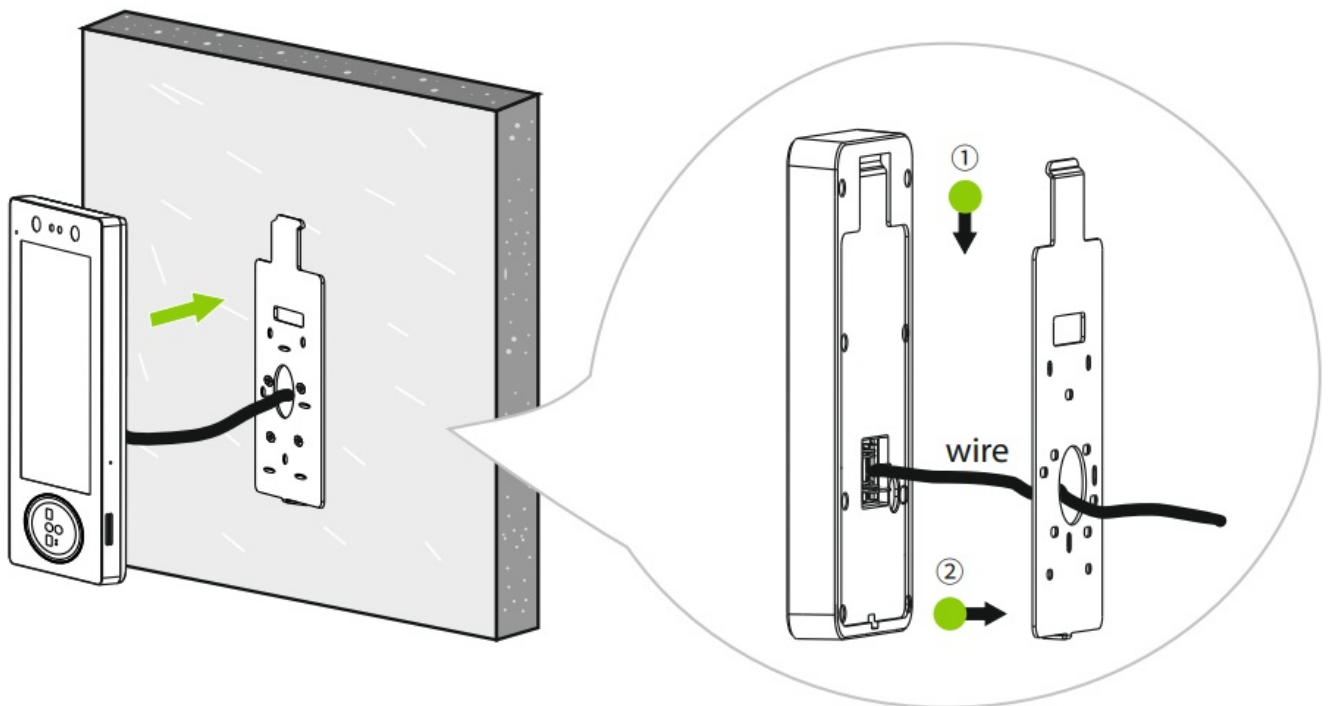
- Step 2: Insert the expansion tubes into the mounting holes.



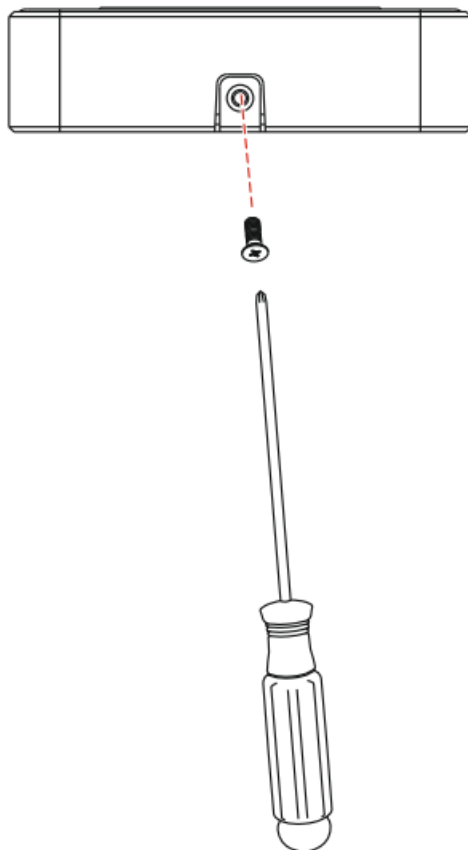
- Step 3: Attach the backplate on the wall using the wall mounting screws.



- Step 4: Attach the terminal to the backplate.



- Step 5: Fasten the terminal to the backplate with a security screw.



Download Center

Scan the QR Code to download the User Manual, Installation Guide and Quick Start Guide.



QR Code (Download Center)

ZKTeco Industrial Park, No. 32, Industrial Road,
Tangxia Town, Dongguan, China.

Phone: +86 769 – 82109991


Fax: +86 755 – 89602394

www.zkteco.com



Due to regular upgrades of systems and products, ZKTeco could not guarantee exact consistency between the actual product and the written information in this manual.

Documents / Resources

	ZKTECO V5L-IG High Speed Biometric Access Control Terminal [pdf] Installation Guide V5L-IG, V5L IG_EN_v1.0, V5L-IG High Speed Biometric Access Control Terminal, V5L-IG, High Speed Biometric Access Control Terminal, Biometric Access Control Terminal, Access Control Terminal, Control Terminal
---	---

References

- [ZKTeco | Biometrics and Computer Vision](#)
- [User Manual](#)

Manuals+, Privacy Policy

This website is an independent publication and is neither affiliated with nor endorsed by any of the trademark owners. The "Bluetooth®" word mark and logos are registered trademarks owned by Bluetooth SIG, Inc. The "Wi-Fi®" word mark and logos are registered trademarks owned by the Wi-Fi Alliance. Any use of these marks on this website does not imply any affiliation with or endorsement.