

ZKTECO
SpeedPalm-V5L
Smart Access
Control Terminal



ZKTECO SpeedPalm-V5L Smart Access Control Terminal Installation Guide

[Home](#) » [ZKTECO](#) » ZKTECO SpeedPalm-V5L Smart Access Control Terminal Installation Guide 

Contents

- [1 ZKTECO SpeedPalm-V5L Smart Access Control Terminal](#)
- [2 About the Device Installation](#)
- [3 How to Install the Device on the Wall?](#)
- [4 Download Center](#)
- [5 Documents / Resources](#)
 - [5.1 References](#)
- [6 Related Posts](#)



ZKTECO SpeedPalm-V5L Smart Access Control Terminal

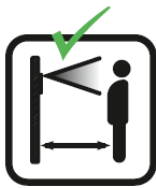


About the Device Installation

Please refer to the following recommendations for installation.



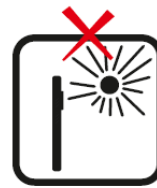
INSTALL INDOORS
ONLY



KEEP EFFECTIVE
DISTANCE OF
0.3 to 2m



AVOID INSTALLATION
NEAR
GLASS WINDOWS



AVOID DIRECT
SUNLIGHT
AND EXPOSURE

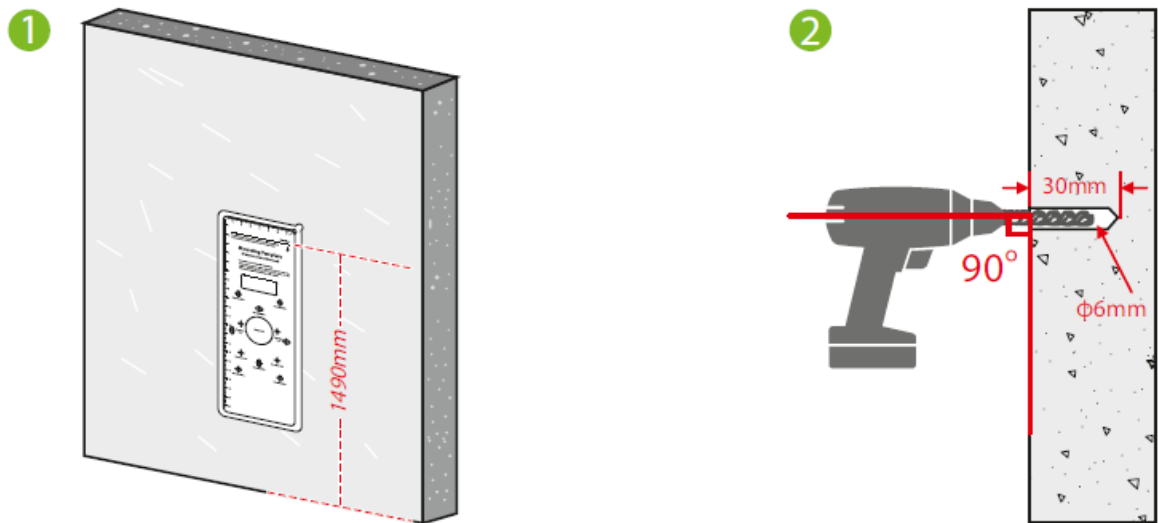


AVOID USE OF ANY
HEAT SOURCE
NEAR THE DEVICE

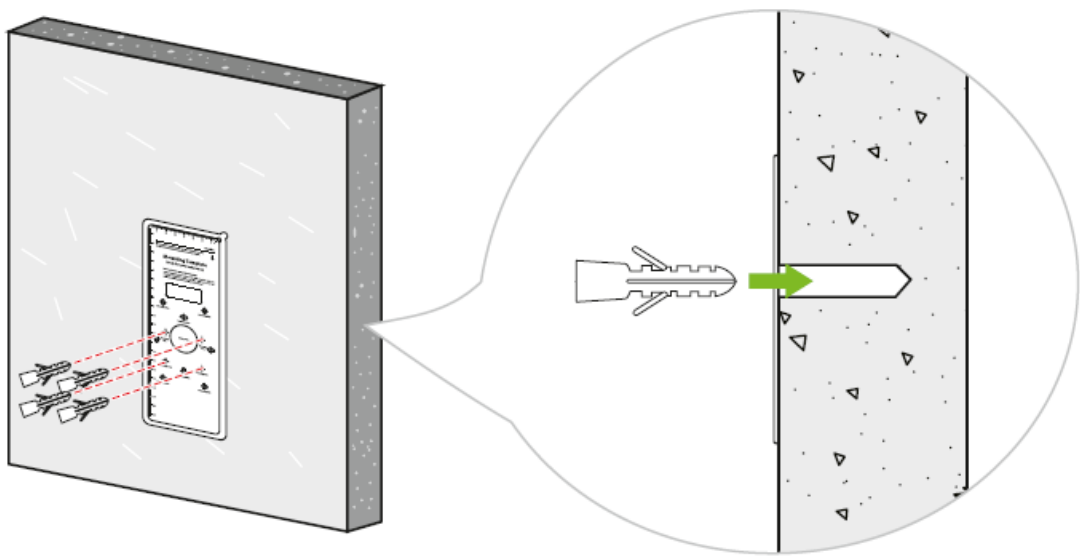
- Avoid direct contact to sunlight for a long time.
- Protect the device from moisture, water, and rain.
- Handle the device with care.
- Ensure that the device is not installed near the sea or in other locations where metal oxidation and rust may develop if the device is exposed for an extended period. Protect the device from lightning.
- Avoid using the device in acidic or alkaline environments for extended periods.

How to Install the Device on the Wall?

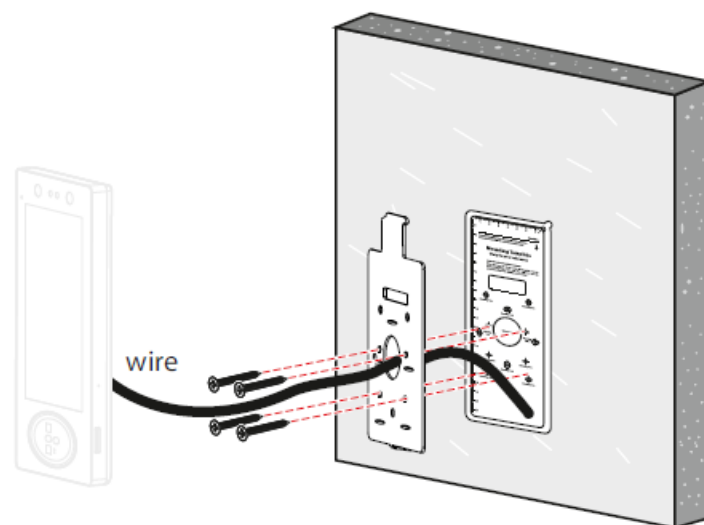
1. Step 1: Stick the mounting template to the wall and drill holes according to the mounting template.



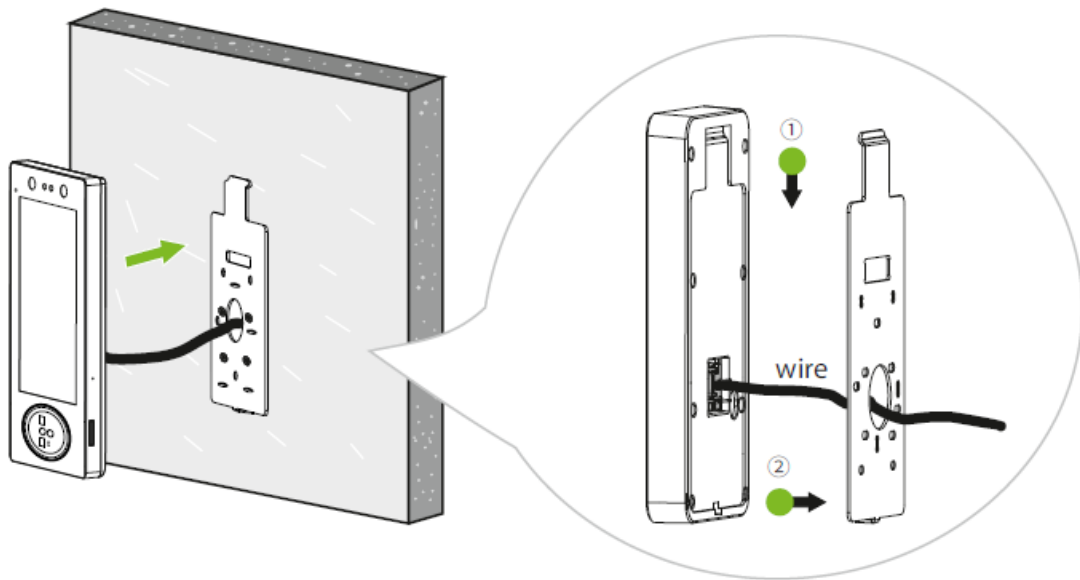
2. Step 2: Insert the expansion tubes into the mounting holes.



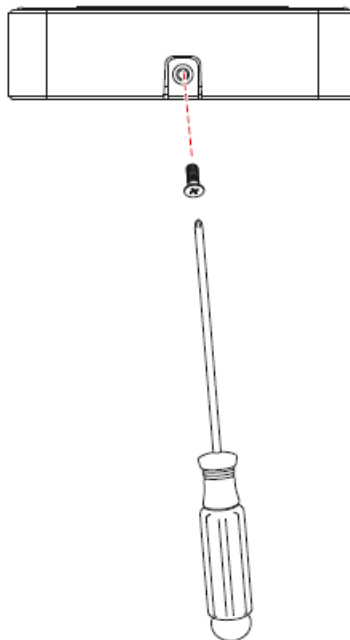
3. Step 3: Attach the backplate on the wall using the wall mounting screws.



4. Step 4: Attach the terminal to the backplate.



5. Step 5: Fasten the terminal to the backplate with a security screw.



Download Center

Scan the QR Code to download the User Manual, Installation Guide and Quick StartGuide.



QR Code (Download Center)

ZKTeco Industrial Park, No. 32, Industrial Road, Tangxia Town, Dongguan, China.
Phone : +86 769 – 82109991
Fax : +86 755 – 89602394
www.zkteco.com


Copyright © 2024 ZKTECO CO., LTD. All Rights Reserved.



(FAQ)

- **Q: Can this device be used outdoors?**
A: No, this device is designed for indoor use only.
- **Q: What is the recommended effective distance for installation?**
A: Maintain a distance of 0.3 to 2 meters for optimal performance.
- **Q: Is it safe to install this device near glass windows?**
A: It is recommended to avoid installing near glass windows to prevent potential issues.

Documents / Resources

	ZKTECO SpeedPalm-V5L Smart Access Control Terminal [pdf] Installation Guide SpeedPalm-V5L Smart Access Control Terminal, SpeedPalm-V5L, Smart Access Control Terminal, Access Control Terminal, Control Terminal, Terminal
---	---

References

- [ZKTeco | Biometrics and Computer Vision](#)
- [User Manual](#)

[Manuals+](#), [Privacy Policy](#)

This website is an independent publication and is neither affiliated with nor endorsed by any of the trademark owners. The "Bluetooth®" word mark and logos are registered trademarks owned by Bluetooth SIG, Inc. The "Wi-Fi®" word mark and logos are registered trademarks owned by the Wi-Fi Alliance. Any use of these marks on this website does not imply any affiliation with or endorsement.