

ZKTECO
SenseFace 2A
Fingerprint Sensor
Biometrics



ZKTECO SenseFace 2A Fingerprint Sensor Biometrics User Guide

[Home](#) » [ZKTECO](#) » ZKTECO SenseFace 2A Fingerprint Sensor Biometrics User Guide 

Contents

- [1 ZKTECO SenseFace 2A Fingerprint Sensor Biometrics](#)
- [2 Product Specifications](#)
- [3 Product Usage Instructions](#)
- [4 Installation Environment](#)
- [5 Device Installation](#)
- [6 Power Connection](#)
- [7 Ethernet Connection](#)
- [8 Door Sensor & Exit Button Connection](#)
- [9 Lock Relay Connection](#)
- [10 Download Center](#)
- [11 FAQ](#)
- [12 Documents / Resources](#)
 - [12.1 References](#)
- [13 Related Posts](#)



ZKTECO SenseFace 2A Fingerprint Sensor Biometrics



Product Specifications

- **Product:** 2.4-inch Series
- **Version:** 1.0
- **Power Input:** AC Adapter DC 12V 1.5A
- **Network Connection:** Ethernet
- **Recommended Installation Environment:**
 - Window with dimensions between 6.5ft to 10ft
 - Avoid glass refraction and direct sunlight exposure
 - Avoid heat sources near the device

Product Usage Instructions

Device Installation

1. Stick the mounting template sticker to the wall and drill holes according to the template.
2. Fix the backplate on the wall using wall mounting screws.
3. Attach the device to the backplate with a security screw.

Power Connection

Connect the provided AC Adapter rated at DC 12V 1.5A to power the device.

Ethernet Connection

Connect the device to a computer software via an Ethernet cable. Ensure IP addresses are correctly set as per the provided information.

Door Sensor & Exit Button Connection

Connect the door sensor, exit button, and lock relay according to the provided instructions based on the type of lock used (Normally Opened or Normally Closed).

Download Center

Scan the QR Code to download additional user manuals and guides for detailed information.

Installation Environment

Please refer to the following installation recommendations.



KEEP DISTANCE



AVOID GLASS
REFRACTION



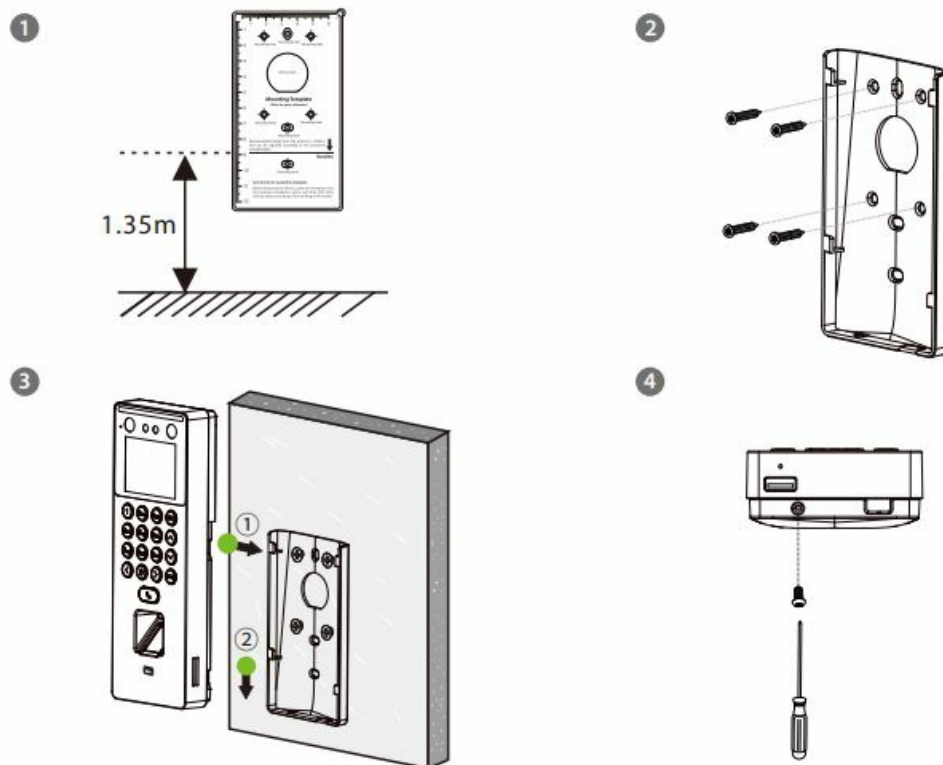
AVOID DIRECT
SUNLIGHT
AND EXPOSURE



AVOID USE OF
ANY HEAT SOURCE
NEAR THE DEVICE

Device Installation

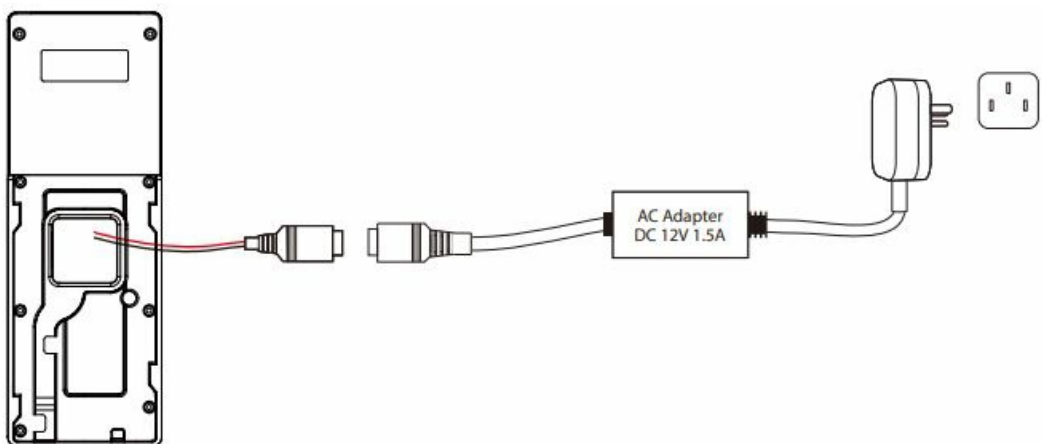
1. Stick the mounting template sticker to the wall and drill holes according to the mounting template sticker.
2. Fix the backplate on the wall using wall mounting screws.
3. Attach the device to the backplate.
4. Attach the device to the backplate with a security screw.



Power Connection

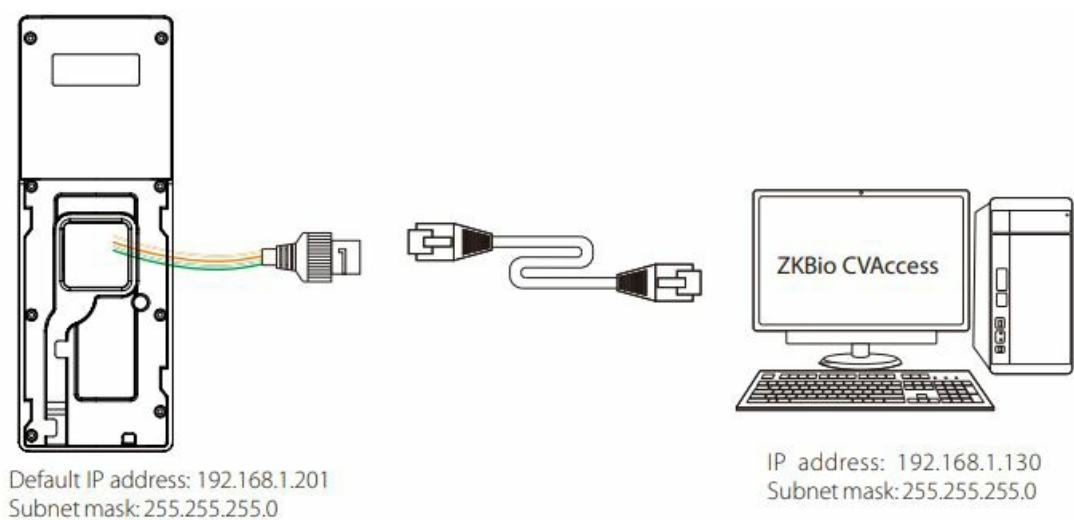
Recommended AC Adapter

1. 12V \pm 10%, at least 1500mA.
2. To share the power with other devices, use an AC Adapter with higher current ratings.



Ethernet Connection

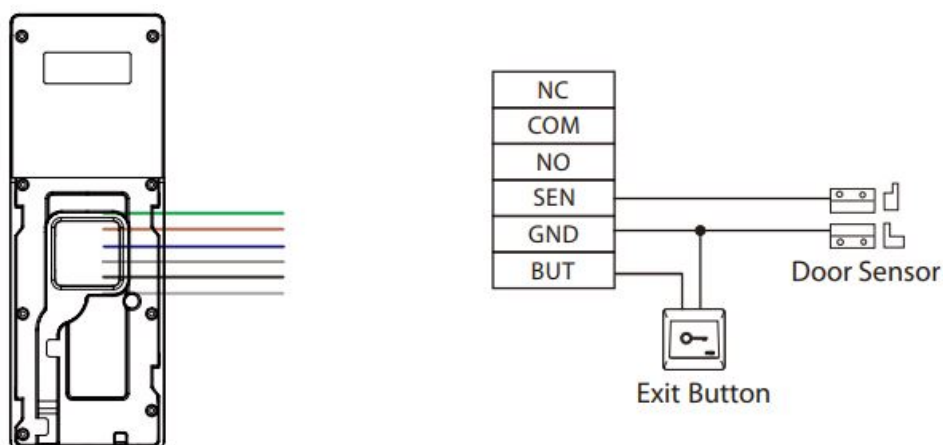
- Connect the device and computer software via an Ethernet cable. As shown in the example below:



- Enter [COMM.] > [Ethernet] > [IP Address], input the IP address, and press M/OK.

Note: In LAN, the IP address of the server (PC) and the device must be in the same network segment when connecting to the software.

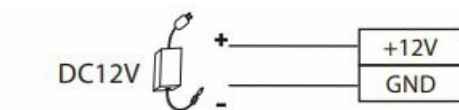
Door Sensor & Exit Button Connection



Lock Relay Connection

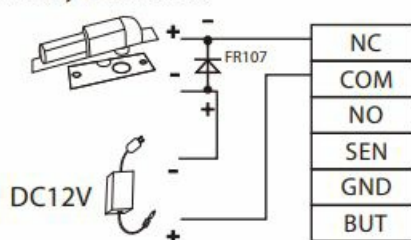
The system supports a Normally Opened Lock and a Normally Closed Lock. The NO LOCK (normally unlocks when power-on) is connected with 'NO' and 'COM' terminals, and the NC LOCK (normally locks when power-on) is connected with 'NC' and 'COM' terminals. Take NC Lock as an example below:


1. The device is not sharing power with the lock



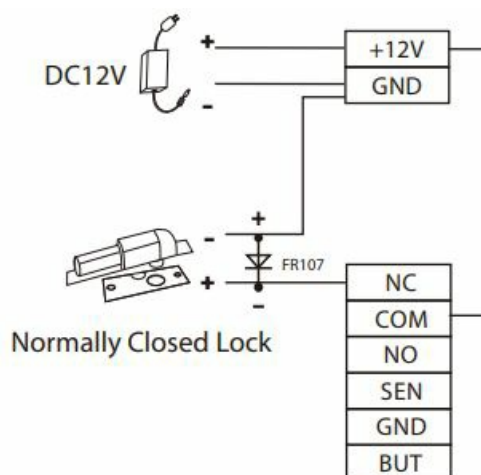
 Do not reverse the polarity.

Normally Closed Lock



 Maximum 30V 3A input.

2. Device sharing power with the lock



Download Center

Scan the QR Code to download the User Manual, Installation Guide, and Quick Start Guide.



QR Code (Download Center)

FAQ


- **What should I do if the device is not powering on?**

Check the power connection and ensure that the AC Adapter is properly plugged in and providing the correct voltage.

- **How can I reset the IP address of the device?**

Navigate to [COMM.] > [Ethernet] > [IP Address], input the new IP address, and press M/OK to save changes.

Documents / Resources

	<p>ZKTECO SenseFace 2A Fingerprint Sensor Biometrics [pdf] User Guide SenseFace-2A, FR107, SenseFace 2A Fingerprint Sensor Biometrics, SenseFace 2A, Fingerprint Sensor Biometrics, Sensor Biometrics, Biometrics</p>
---	---

References

- [User Manual](#)

[Manuals+](#), [Privacy Policy](#)

This website is an independent publication and is neither affiliated with nor endorsed by any of the trademark owners. The "Bluetooth®" word mark and logos are registered trademarks owned by Bluetooth SIG, Inc. The "Wi-Fi®" word mark and logos are registered trademarks owned by the Wi-Fi Alliance. Any use of these marks on this website does not imply any affiliation with or endorsement.