

ZKTECO ProID 100 Series RFID Access Control Reader



# ZKTECO ProID 100 Series RFID Access Control Reader User Guide

[Home](#) » [ZKTECO](#) » ZKTECO ProID 100 Series RFID Access Control Reader User Guide 

## Contents

- [1 ZKTECO ProID 100 Series RFID Access Control Reader](#)
- [2 Product Overview](#)
- [3 Terminal Block](#)
- [4 Device Installation](#)
- [5 DIP Switch Settings](#)
- [6 Standalone Installation](#)
- [7 Controller Connection](#)
- [8 Access Control Device Connection](#)
- [9 Tamper Switch Connection](#)
- [10 Power Connection](#)
- [11 Buzzer, Indicator Light Prompt Instructions](#)
- [12 Specifications](#)
- [13 FCC Compliance Statements](#)
- [14 Documents / Resources](#)
  - [14.1 References](#)
- [15 Related Posts](#)



**ZKTECO ProID 100 Series RFID Access Control Reader**



## Specifications

- Model: DDFTT\$POUSPM3FBEFS
- Power: 26\*\$,4535(6\*%&
- Dimensions: Varies

## Product Usage Instructions

### Assembly

Follow the provided assembly instructions to set up the product correctly.

### Powering On

Ensure the power source is connected and switch on the device using the designated power button.

### Functionality

Refer to the user manual for detailed information on the various functions and features of the product.

### Frequently Asked Questions (FAQ):

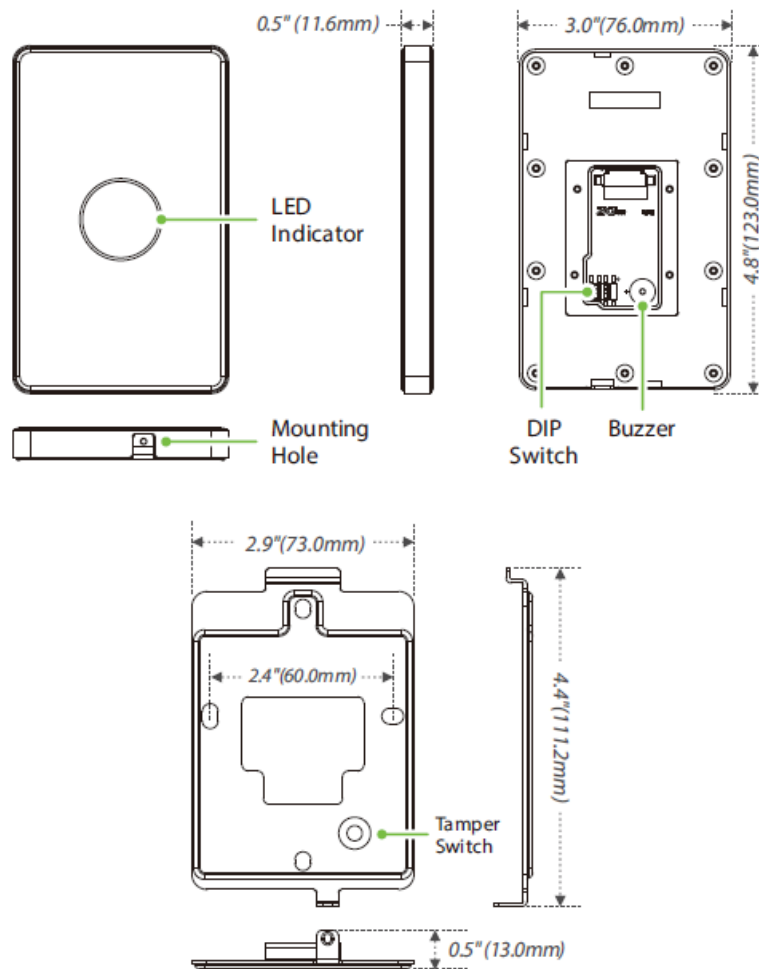
#### Q: How do I troubleshoot power issues with the product?

A: If you encounter power problems, first check the power source and connections. If the issue persists, contact customer support for further assistance.

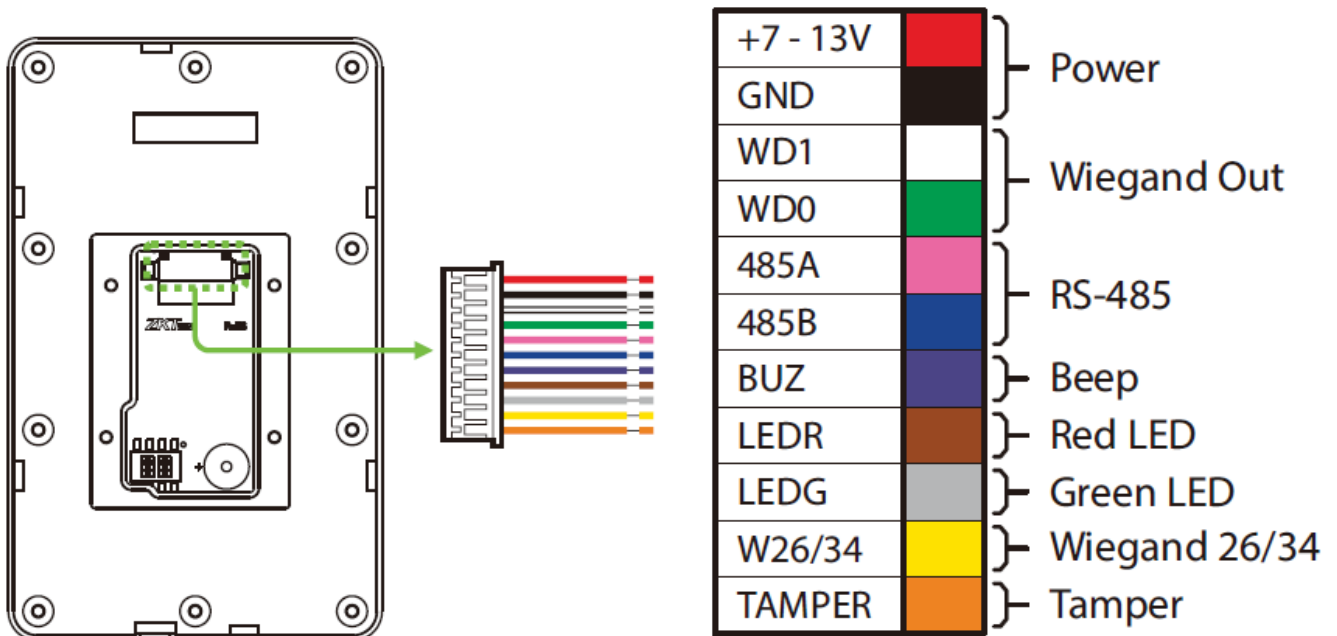
### QUICK START GUIDE RFID

Access Control Reader Applicable Model: ProID 101, ProID 102, ProID 103 Version: 1.2 Date: August 2023

## Product Overview



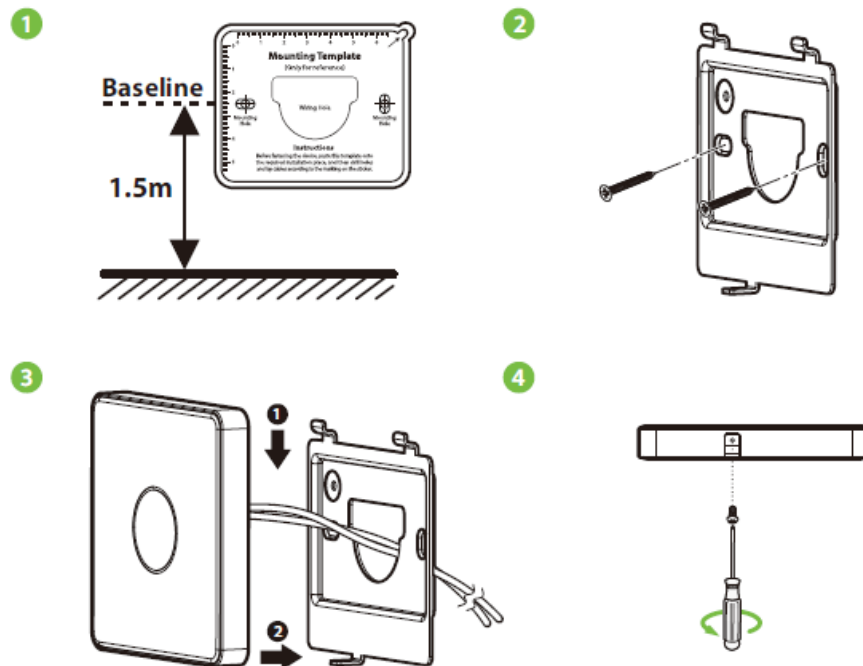
## Terminal Block



## Device Installation

Install on the wall

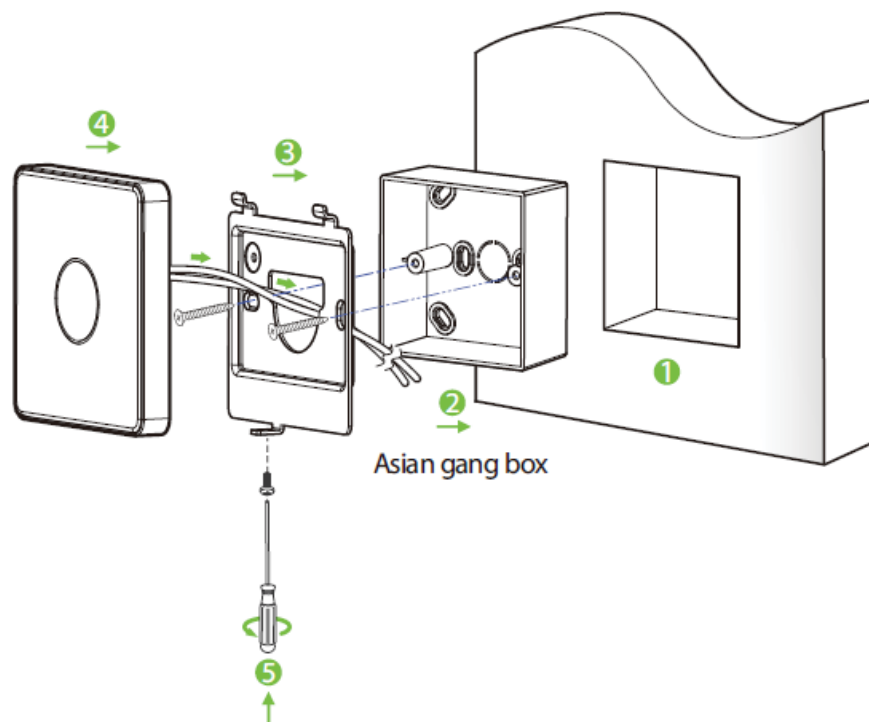
1. Attach the mounting template sticker to the wall, and drill holes according to the mounting paper.
2. Secure the back plate on the wall with the wall mounting screws.
3. After passing the wires through the wiring hole and connecting them to the device, and then attach the device to the back plate from top to bottom.
4. Fasten the device to the back plate with a security screw.



### Mounting on the wall through Asian gang box

1. Install the Asian gang box (or single gang box, mullion mount) into the wall.
2. Fix the back plate onto the Asian gang box (or single gang box, mullion mount) using two wall mounting screws.
3. Pass the cables through the wire hole.
4. Then insert the device into back plate.
5. Use security screw to fasten the device to the back plate.

Note: The installation method of single gang box is the same as that of Asian gang box. Only Asian gang box installation method is illustrated as an example in this quick start guide.

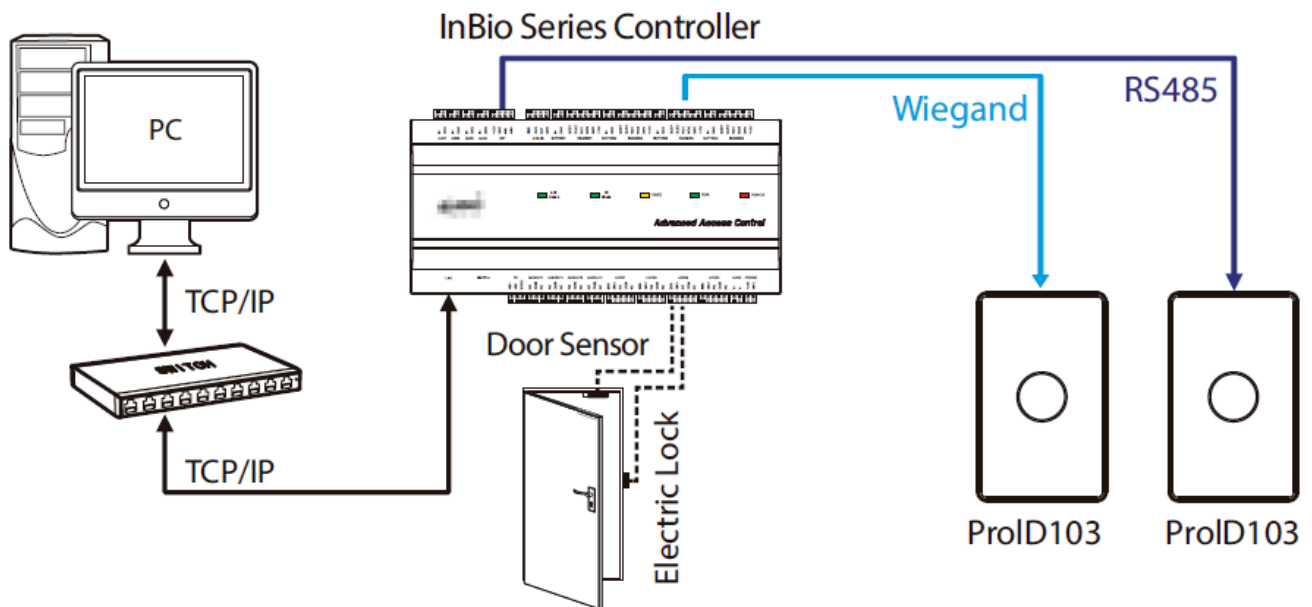


## DIP Switch Settings

As shown in the table below, places 1-3 of the DIP switch are used to set the device number for RS-485 communication, and place 4 is for setting the R\$485 termination resistance. If the RS-485 communication wire is longer than 100 meters, it is needed to set the 4th DIP switch of the last reader to ON state, that is parallel a terminal resistance of 120 ohm between 485+ and 485-.

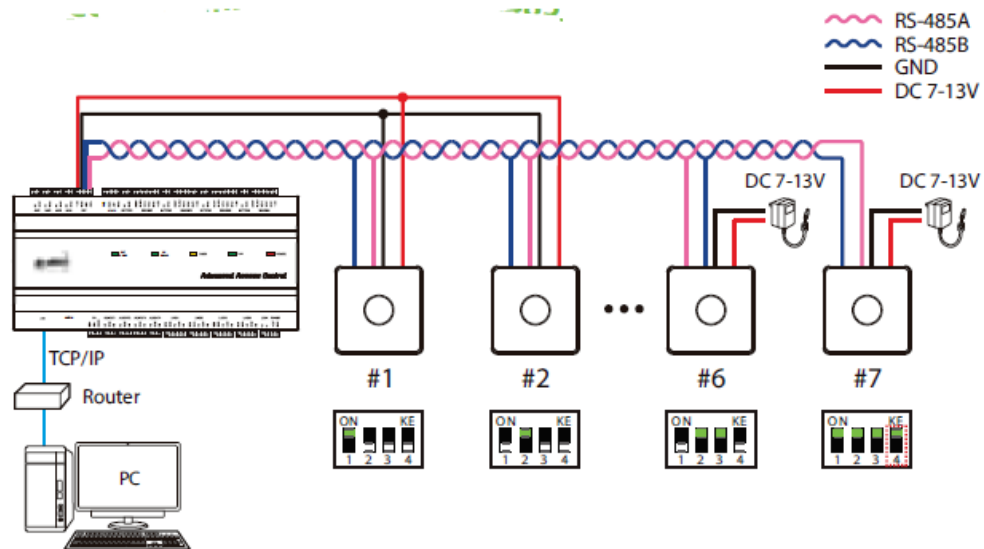
DIP Switch	485 Address	Switch Setting	485 Address	Switch Setting
	1		5	
	2		6	
	3		7	
	4		Terminal Resistance	

## Standalone Installation



## Controller Connection

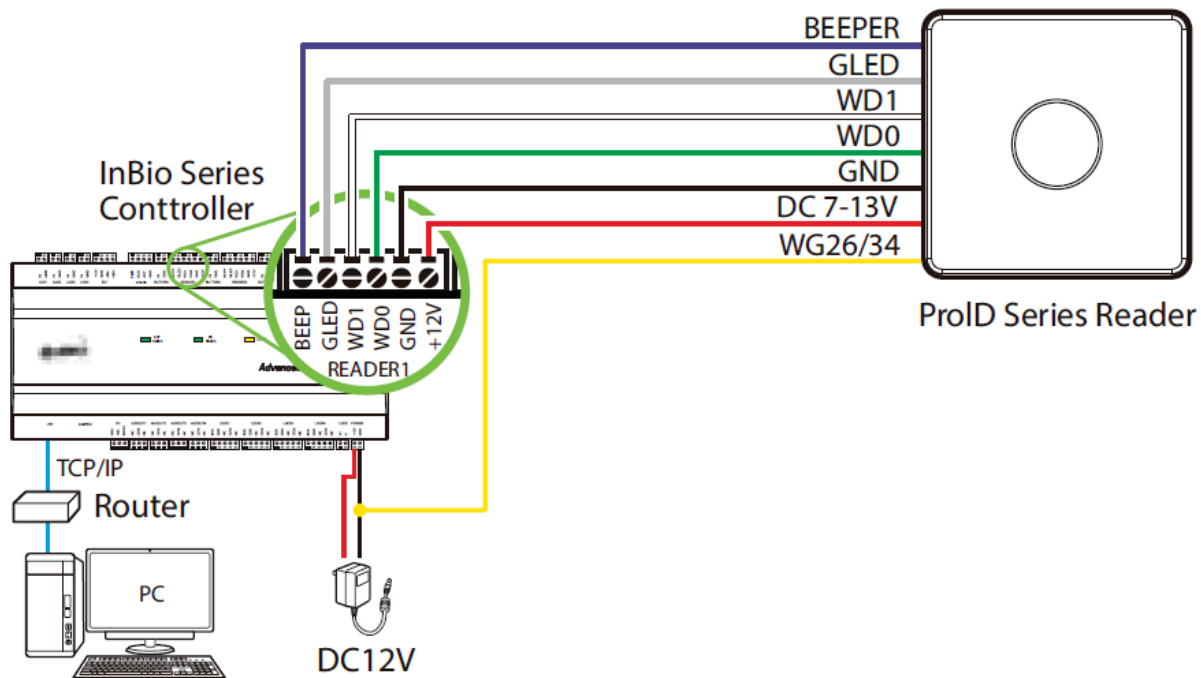
This ProID series reader needs to be connected to a host machine in order to transmit card information via RS-485 or Wiegand. The following is an example of the connection to InBio Series controller.



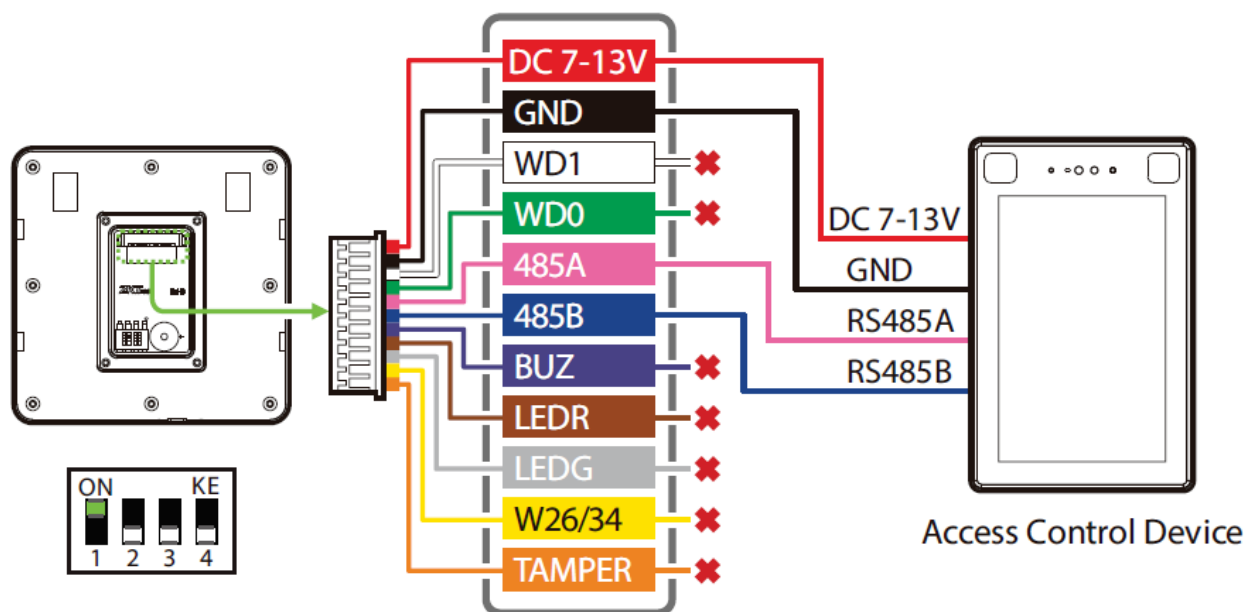
## Notes:

1. A maximum of seven readers can be connected to one controller.
2. Before connecting RS-485 readers, open the rear panel of the reader and set the RS-485 address of the reader via DIP switch according to the connection of each reader.
3. If the RS-485 communication wire is longer than 100 meters, it is needed to set the 4th DIP switch of the last reader to ON state.
4. The DIP switch needs to be set with the controller powered off and takes effect after restart. After setting, the DIP switch does not need to be set back to its original position.

## Connect the controller via Wiegand

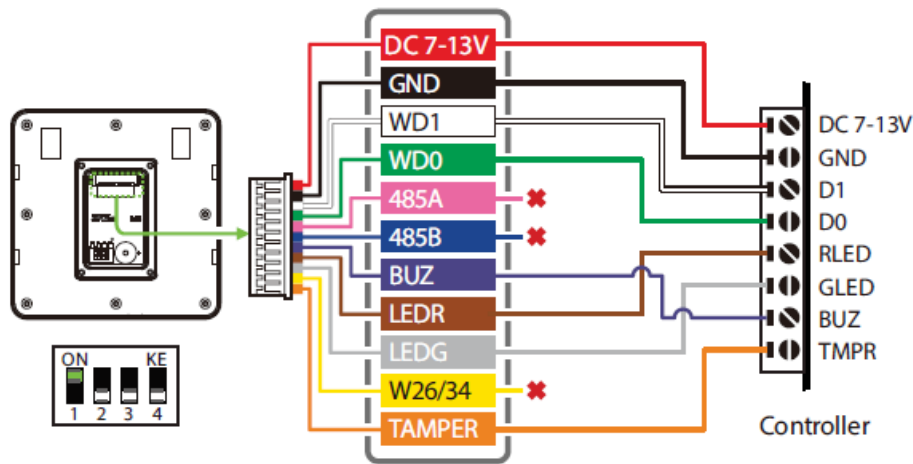


## Access Control Device Connection



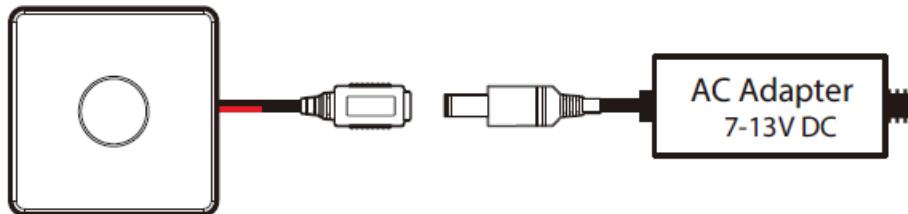
## Tamper Switch Connection

When the tamper switch terminal is successfully connected to the controller, the device will sound an alarm when the back plate of the device is opened, and an alarm signal will be sent to the software side.



## Power Connection

•



Recommended AC adapter: 7 to 13V DC, Current Draw > 350mA/5V.

- Use an AC adapter with a higher current rating to share power with the other devices.

## Buzzer, Indicator Light Prompt Instructions

When the ProID series reader works normally, the buzzer and indicator prompts are shown in the following table.

8PSLJOH 4UBUVT	*OEJDBUPS -JHIU	#V[[FS
8IFO UIF SFBEFS JT QPXFSE PO.	-&% CSJHIU XIJUF MJHIU, UIFO TXJUDI UP XIJUF MJHIU CSFBUIJOH T UBUF BGUFS O.4T.	1 TIPSU TPVOE
8IFO QVODIJOH UIF DBSE.	-&% CSJHIU XIJUF MJHIU.	1 TIPSU TPVOE
\$BSE JT SFHJTUFSFE	-&% JOEJDBUPS MJHIUT HSFFO.	1 TIPSU TPVOE
\$BSE OPU SFHJTUFSFE	-&% JOEJDBUPS (SFE) MJHIUT VQ CS JFGMZ UXJDF.	2 TIPSU TPVOE

Note: In Wiegand communication mode, the status of LED and buzzer is controlled by the host when the card is swiped.

## Specifications

0QFSBUJPO 7PMUBHF	7 UP 137 %\$
\$VSSFOU %SBX	35ON" 57
1SPDFTTPS	32-CJU "3. \$PSUFY-.O 48.)[
\$BSE 5ZQF	*%/*\$ \$BSE
3FBE 3BOHF	O UP 3 DN
0VUQVU 'PSNBU	8JFHBOE 26CJU PS 34CJU ("EKV TUBCMF), 34485
0QFSBUJOH 5FNQFSBUVSF	-2O j\$ UP 65 j\$
0QFSBUJOH )VNJEJUZ	1O% UP 9O% 3), /PO-\$POEFOTJOH
1SPUFDUJPO 3BUJOH	*,O4
*OTUBMMBUJPO	"TJBO HBOH CPY, TJOHMF HBOH CPY, NVMMJPO NPVOU
\$PMPS	#MBDL & 8IJUF
\$FSUöDBUJPO	*409OO1, *4014OO1, \$&, '\$\$

## FCC Compliance Statements

This device complies with Part 15 of the FCC Rules. Operation is subject to the following two conditions:

1. This device may not cause harmful interference, and
2. This device must accept any interference received, including interference that may cause undesired operation.

**Caution:** Changes or modifications not expressly approved by the party responsible for compliance could void the user's authority to operate the equipment.

**Note:** This equipment has been tested and found to comply with the limits for a Class B digital device, pursuant to Part 15 of the FCC Rules. These limits are designed to provide reasonable protection against harmful interference in a residential installation. This equipment generates, uses and can radiate radio frequency energy and, if not installed and used in accordance with the instructions, may cause harmful interference to radio communications. However, there is no guarantee that interference will not occur in a particular installation. If this equipment does cause harmful interference to radio or television reception, which can be determined by turning the equipment off and on, the user is encouraged to try to correct the interference by one or more of the following measures:


- Reorient or relocate the receiving antenna.
- Increase the separation between the equipment and receiver.
- Connect the equipment into an outlet on a circuit different from that to which the receiver is connected.
- Consult the dealer or an experienced radio/TV technician for help.

## RF Exposure Compliance

This equipment complies with FCC radiation exposure limits set forth for an uncontrolled environment. This equipment should be installed and operated with minimum distance 20cm between the radiator and your body. This transmitter must not be co-located or operating in conjunction with any other antenna or transmitter.



Documents / Resources

	<p><a href="#">ZKTECO ProID 100 Series RFID Access Control Reader</a> [pdf] User Guide 21206, 2AJ9T-21206, 2AJ9T21206, ProID 100 Series RFID Access Control Reader, ProID 100 Series, ProID 100 Series Access Control Reader, RFID Access Control Reader, Access Control Reader, Access Reader, Reader</p>
---	--

References

- [User Manual](#)

[Manuals+](#), [Privacy Policy](#)

This website is an independent publication and is neither affiliated with nor endorsed by any of the trademark owners. The "Bluetooth®" word mark and logos are registered trademarks owned by Bluetooth SIG, Inc. The "Wi-Fi®" word mark and logos are registered trademarks owned by the Wi-Fi Alliance. Any use of these marks on this website does not imply any affiliation with or endorsement.