



ZKTECO ProBio(QR) USB Host User Guide

[Home](#) » [ZKTECO](#) » ZKTECO ProBio(QR) USB Host User Guide 

Contents

- [1 ZKTECO ProBio\(QR\) USB Host](#)
- [2 Safety Precautions](#)
- [3 User Registration](#)
- [4 Device Overview](#)
- [5 Device Installation](#)
- [6 Power Connection](#)
- [7 Ethernet Connection](#)
- [8 RS485 Connection](#)
- [9 Lock Relay Connection](#)
- [10 Standalone Installation](#)
- [11 Wiegand Output Connection](#)
- [12 Device Operation](#)
- [13 Documents / Resources](#)
- [14 Related Posts](#)



ZKTECO ProBio(QR) USB Host



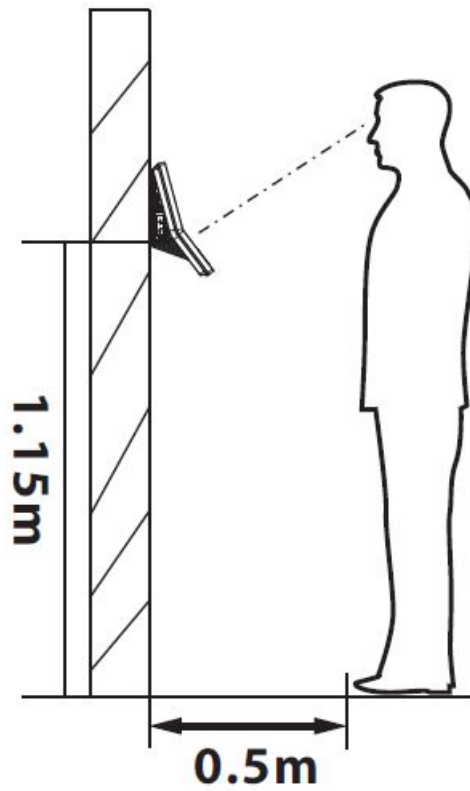
Safety Precautions

Before installation, please read the following precautions carefully risks and dangers to this product, users and surroundings.

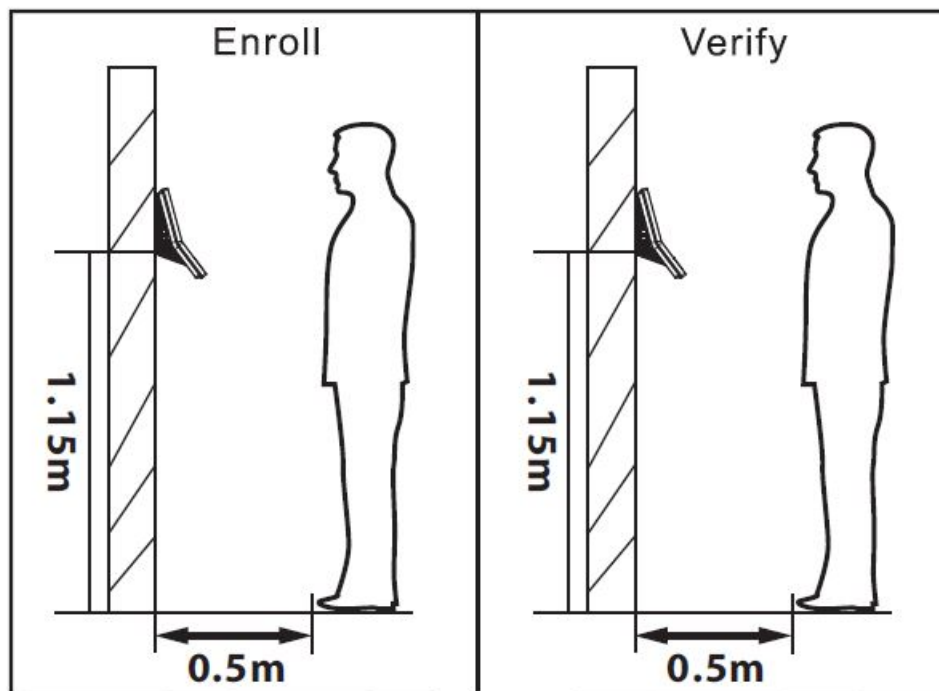
- Do not expose to direct sunlight, water, dust and soot.
 - Do not place magnetic object near the product. Magnetic objects such as Magnet, , , Monitor or Speaker may damage the device. any CRT TV
 - Do not place the device next to any heating equipment.
 - Prevent water, drinks or chemicals leaking into the device.
 - This product is not intended for use by children unless they are supervised.
 - Do not drop or damage the device.
 - Do not disassemble, repair or modify the device.
 - Do not use the device for any purpose other than those specified.
 - Remove dusts or dirt regularly. While cleaning, wipe dust off with a smooth cloth or towel instead of water.
- Contact your supplier in case of any problem!

User Registration

Recommended Standing Position



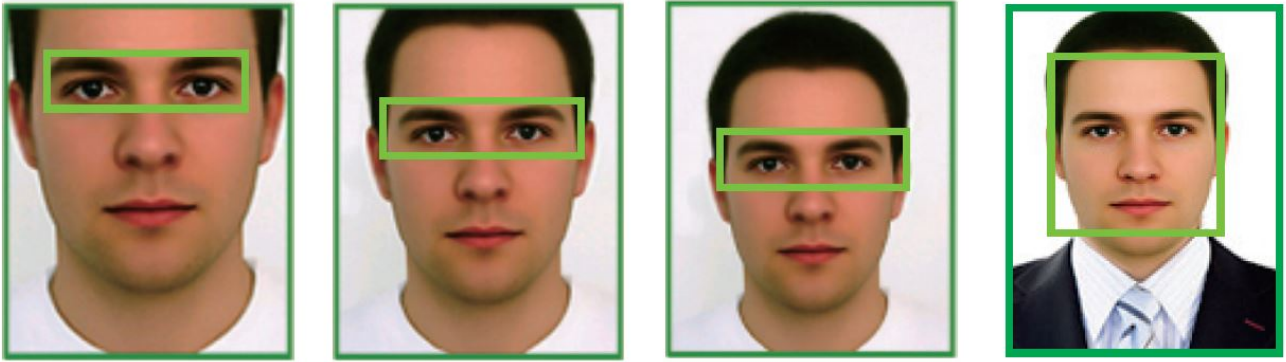
For user heights between 1.5m to 1.8m, it is recommended to install the device at 1.15m height above ground (can be modified according to the user's average height).



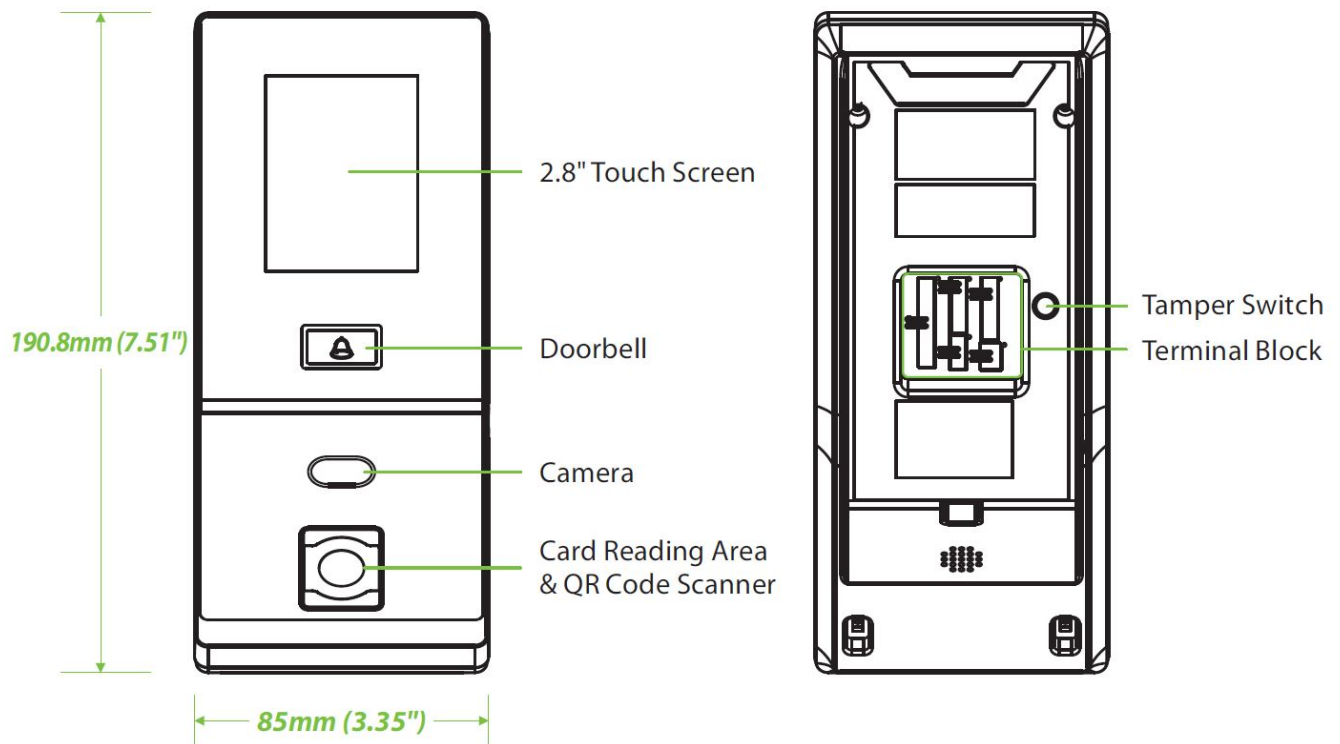
Recommended Procedures (as shown in the left image): During registration and verification procedures, the position of device should not be changed to verification preciseness. If it is necessary to move the device, its vertical height should not be changed.

Registration

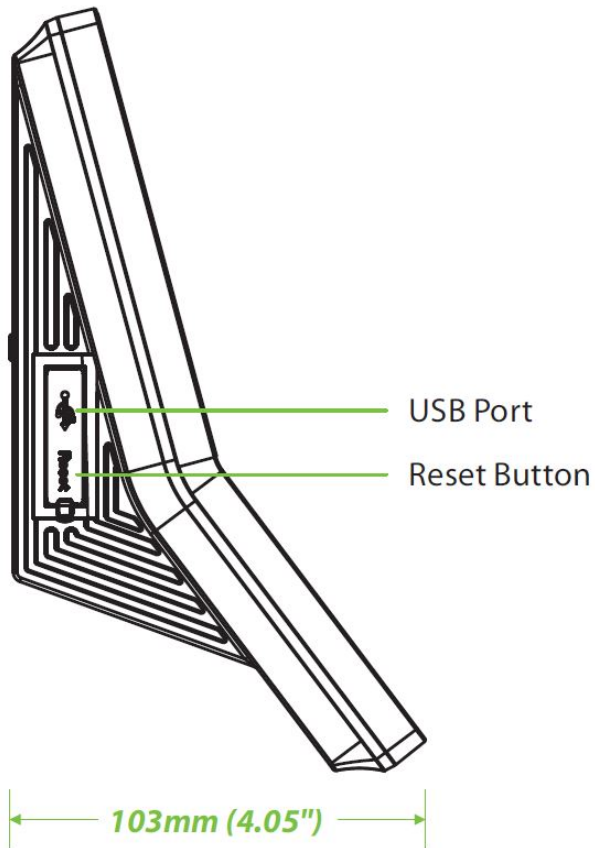
- During registration, it is required to adjust your upper body to fit your eyes into the green frame on the screen.
- During verification, it is required to show your face in the center of the screen and fit your face into the green frame in the screen



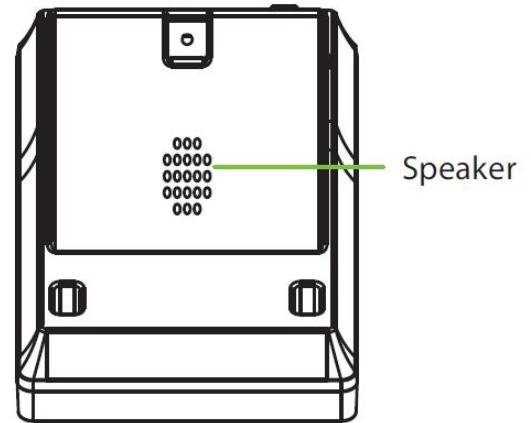
Device Overview



Left Side



Bottom

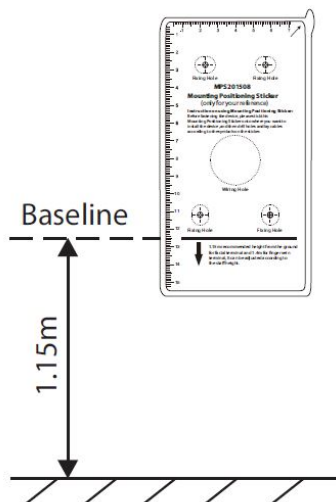


Device Installation

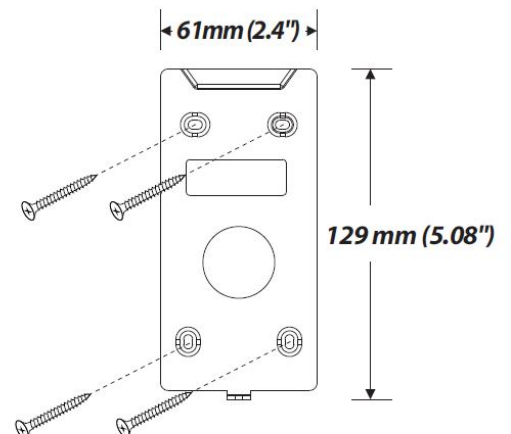
Installation on the wall

1. Attach the mounting template sticker to the wall, and drill holes according to the mounting paper.
2. Fix the back plate on the wall using the wall mounting screws.
3. Attach the device to the back plate.
4. Fasten the device to the back plate with a security screw.

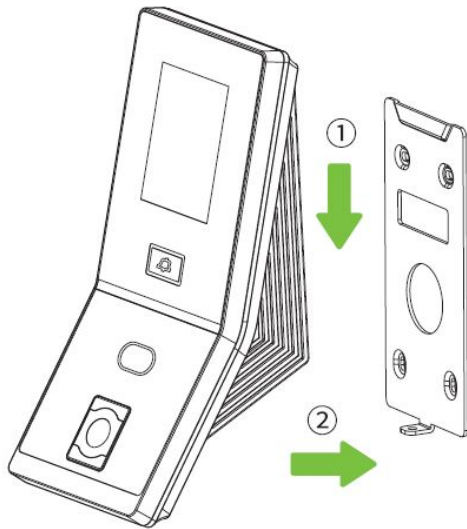
1



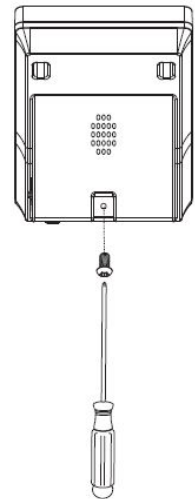
2



3

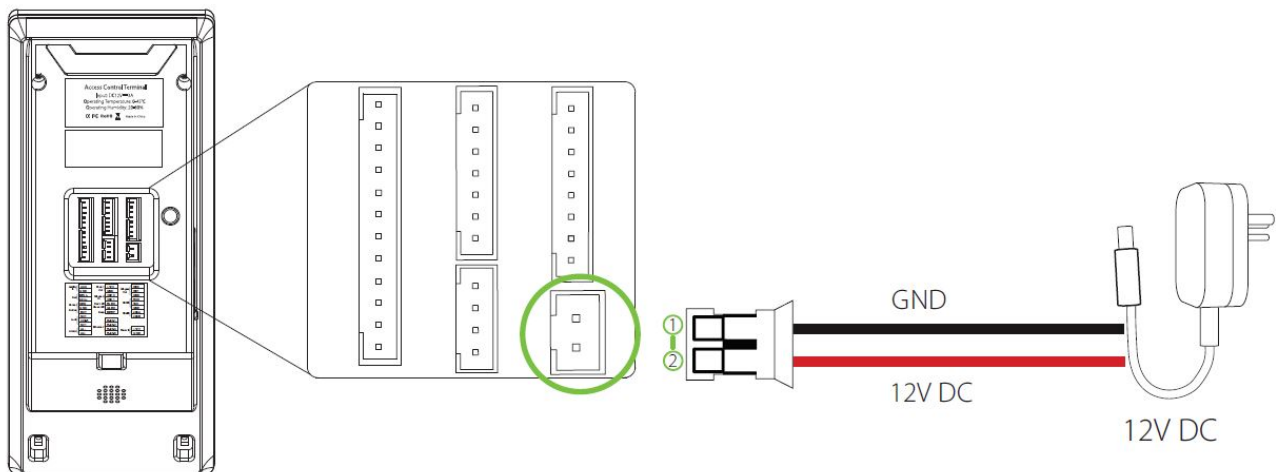


4

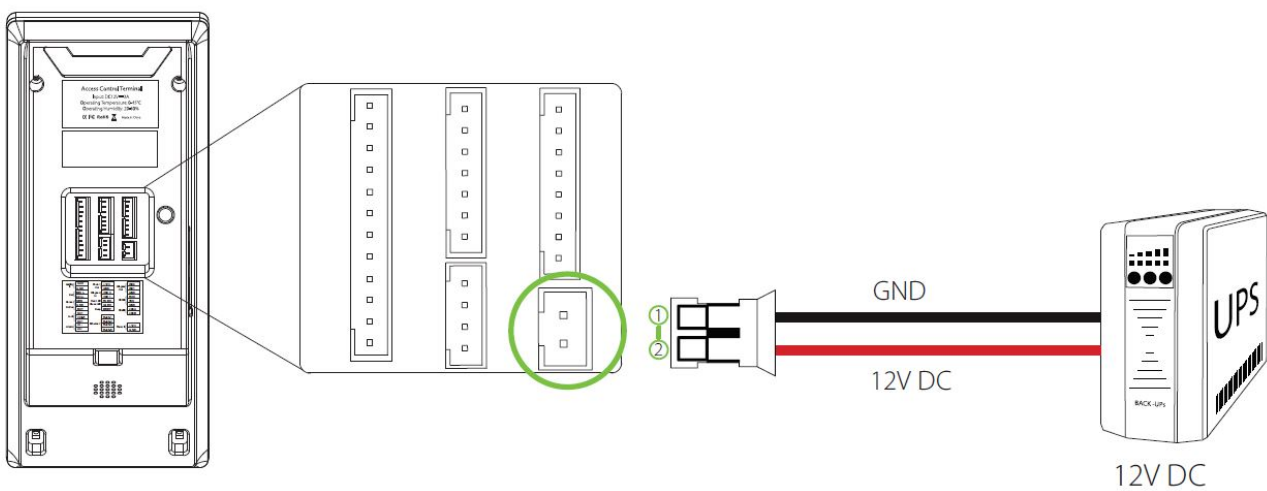


Power Connection

Without UPS



With UPS (Optional)



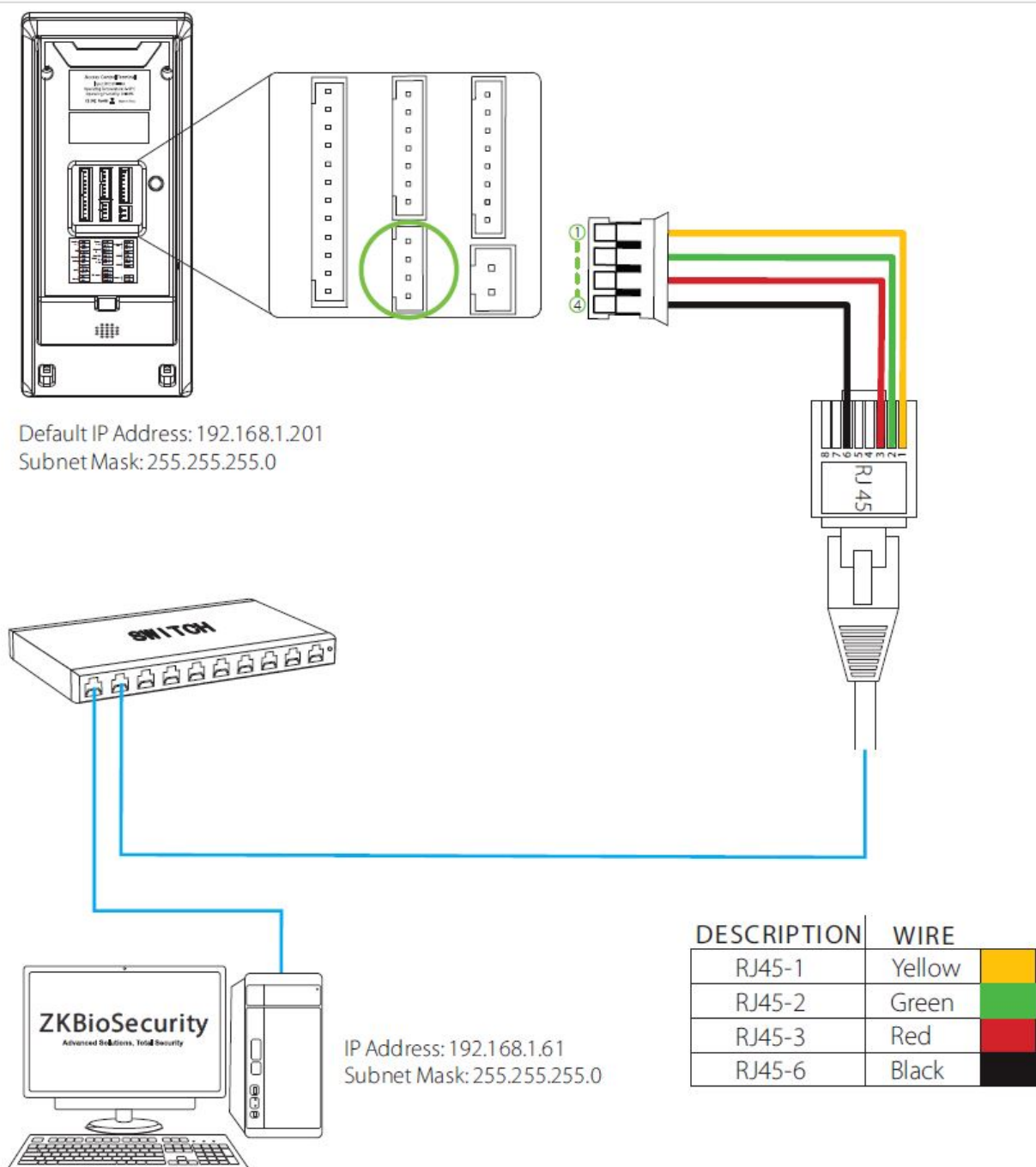
Recommended AC Adapter

- Recommended AC Adapter: 12V A , 3
- To share the power with other devices, use an with higher current ratings.

Ethernet Connection

LAN Connection

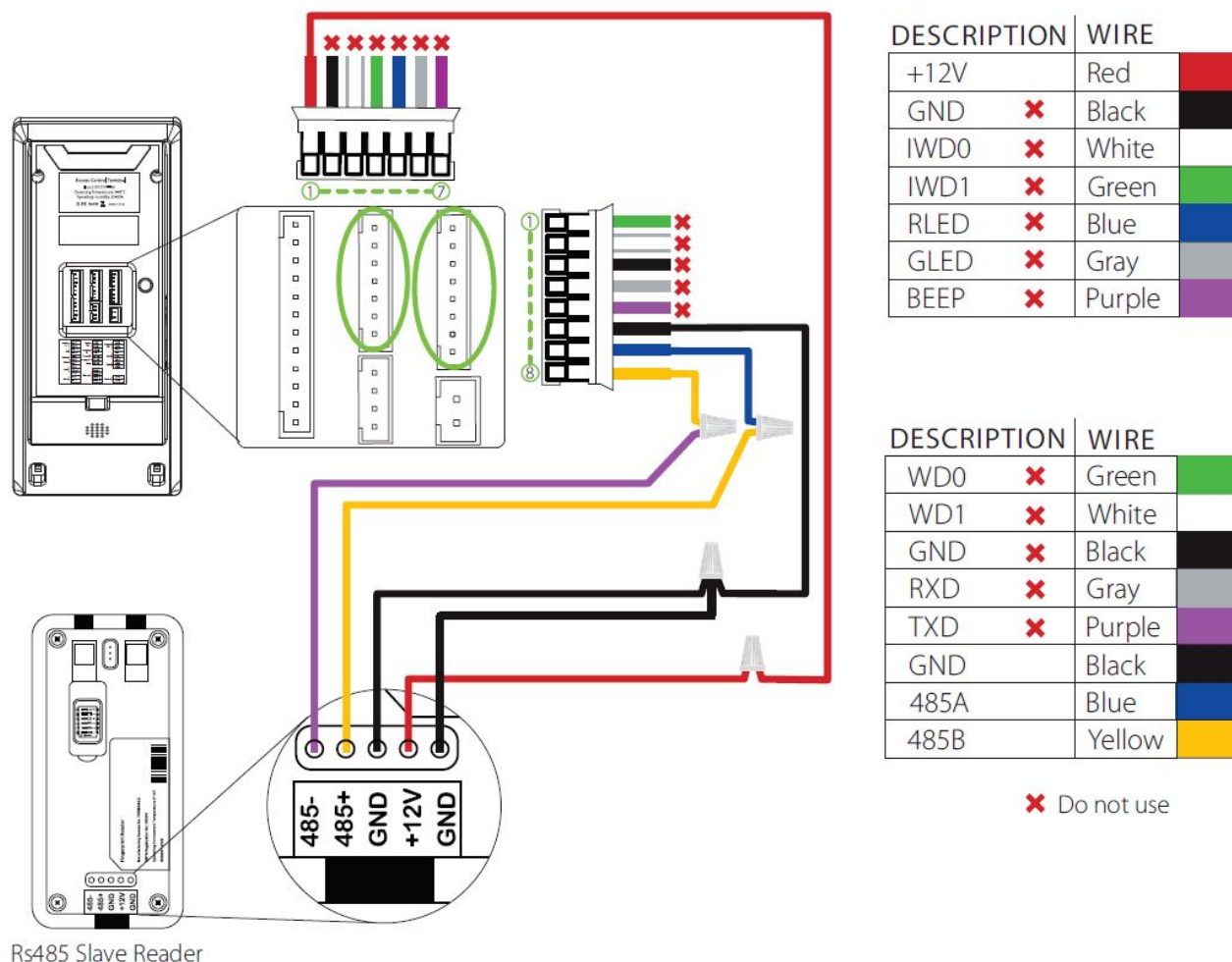
Connect the device and the software over an Ethernet cable. An example is shown below



Note:
In LAN, the IP Addresses of the Server (PC) and the device must be in the same network segment when connecting to the ZKBioSecurity software. Click Comm enter the IP address and click ok.

RS485 Connection

Rs485 Slave Reader Connection



DIP Settings

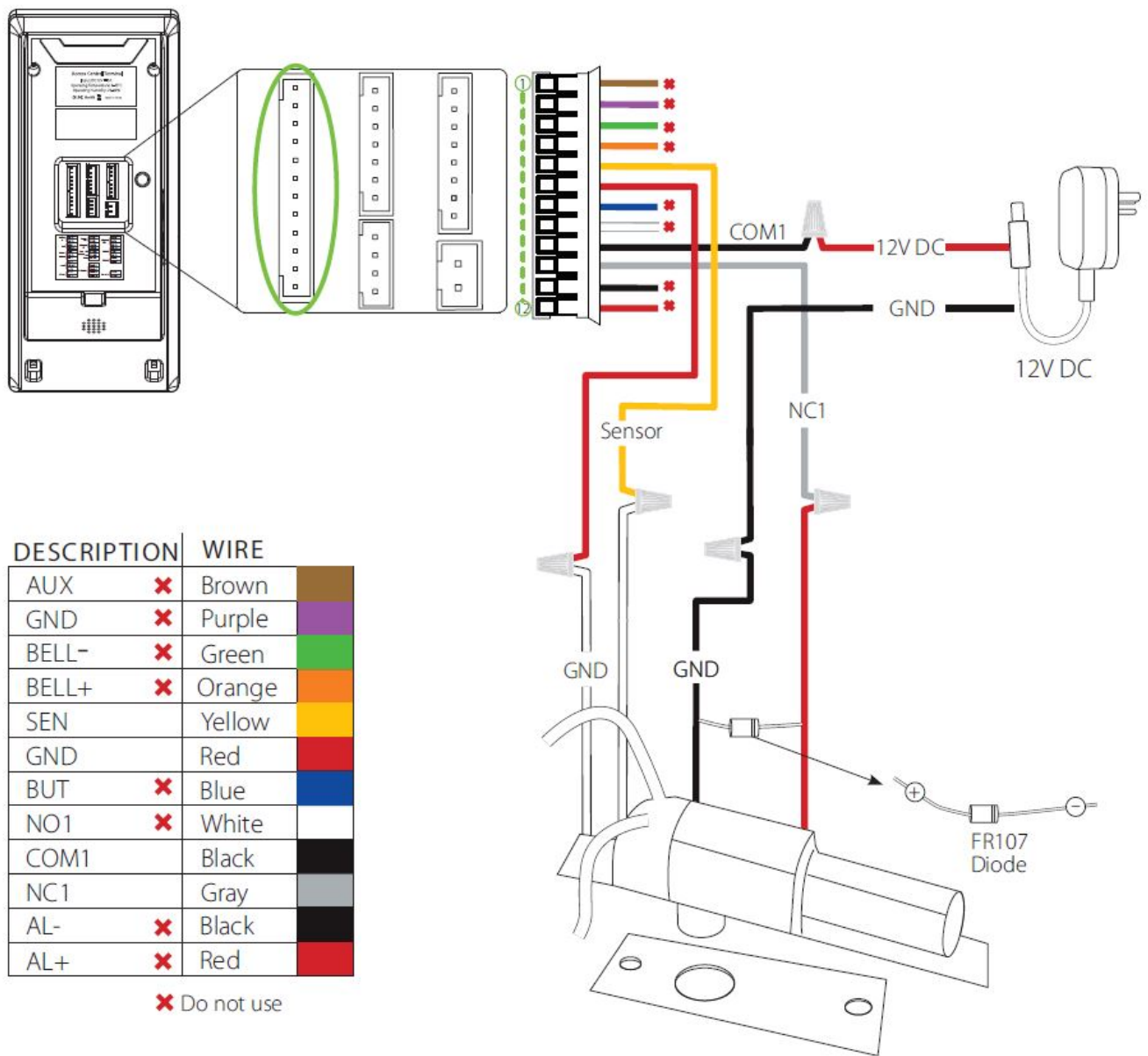
1. There are six DIP switches on the back of RS485 slave reader, switches 1 to 4 are for RS485 address, switch 5 is reserved, and switch 6 is for reducing noise on a long RS485 cable.
2. If the RS485 slave reader is powered from the terminal, the length of wire should be less than 100 meters or 330 ft.
3. If the cable length is more than 200 meters or 600 ft., the number 6 switch should be turned ON as shown below



Lock Relay Connection

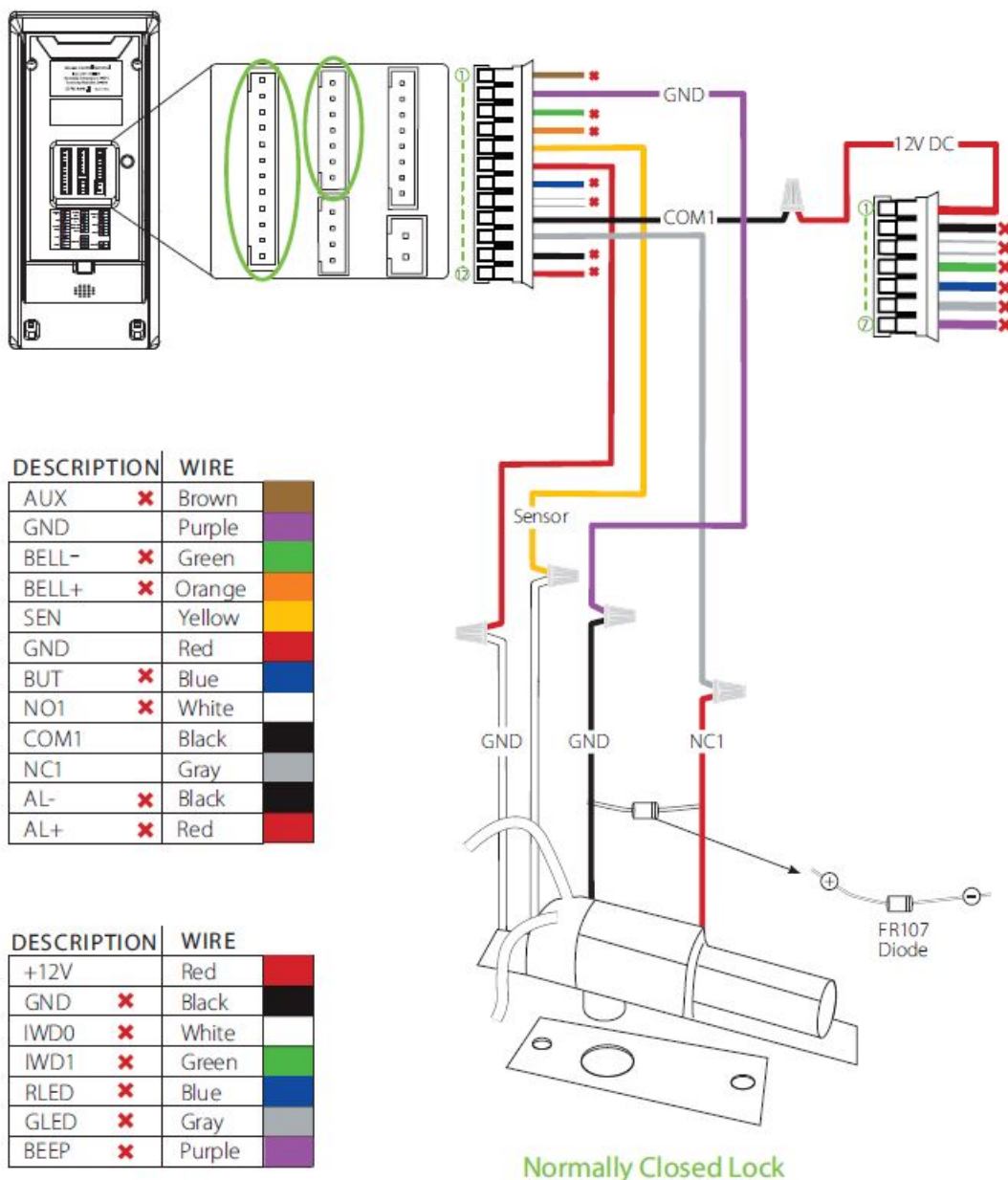
The system supports both and . The (Normally Opened when powered) is connected with 'NO' and 'COMM' terminals, and the (Normally Closed when powered) is connected with 'NC' and 'COMM' terminals. The power can be shared with the lock or can be used separately for the lock, as shown in the example with NC Lock below:

Device Not Sharing Power with the Lock



Normally Closed Lock

Device Sharing Power with the Lock



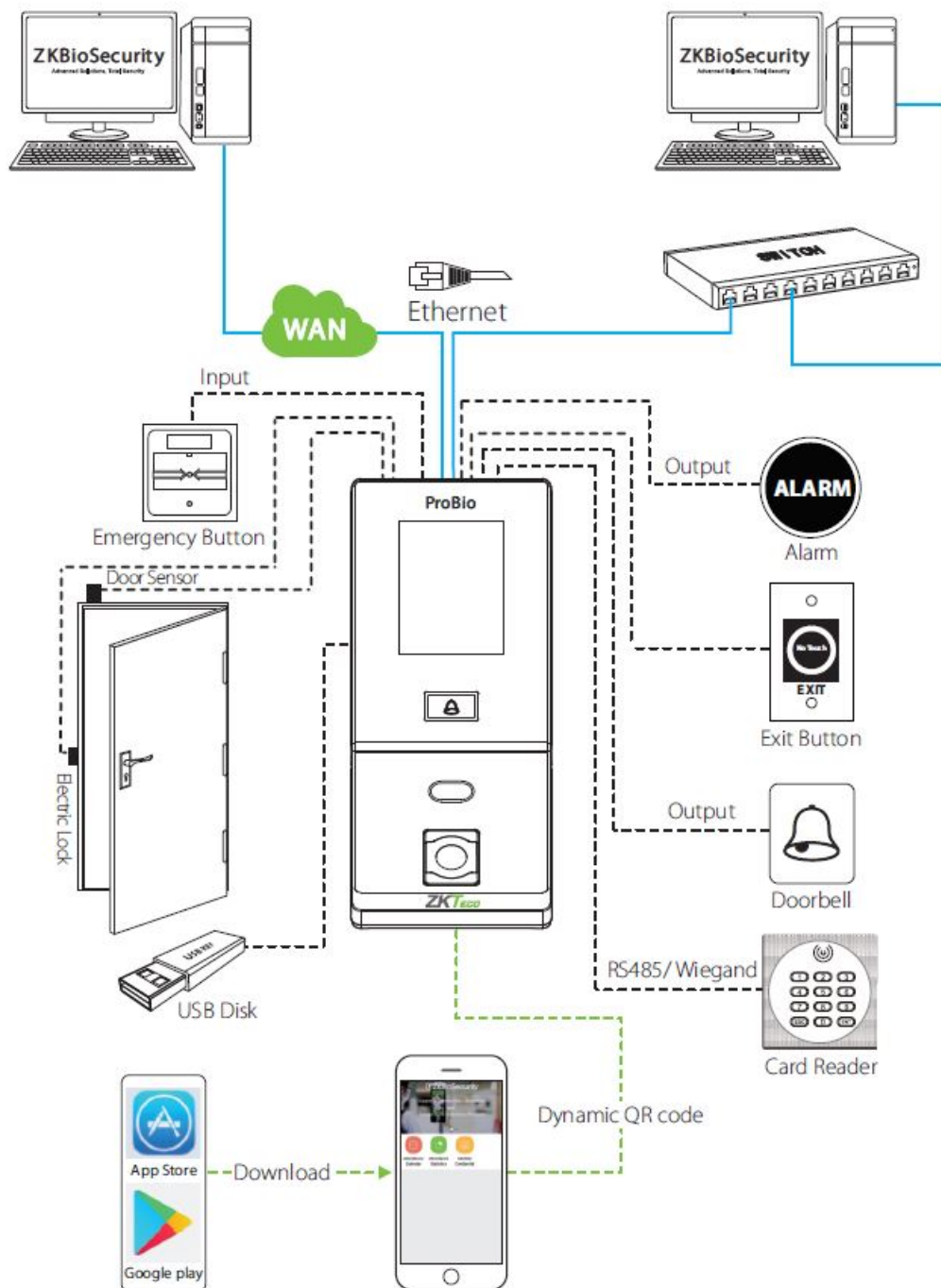
DESCRIPTION	WIRE
AUX	✗ Brown
GND	Purple
BELL-	✗ Green
BELL+	✗ Orange
SEN	Yellow
GND	Red
BUT	✗ Blue
NO1	✗ White
COM1	Black
NC1	Gray
AL-	✗ Black
AL+	✗ Red

DESCRIPTION	WIRE
+12V	Red
GND	✗ Black
IWD0	✗ White
IWD1	✗ Green
RLED	✗ Blue
GLED	✗ Gray
BEEP	✗ Purple

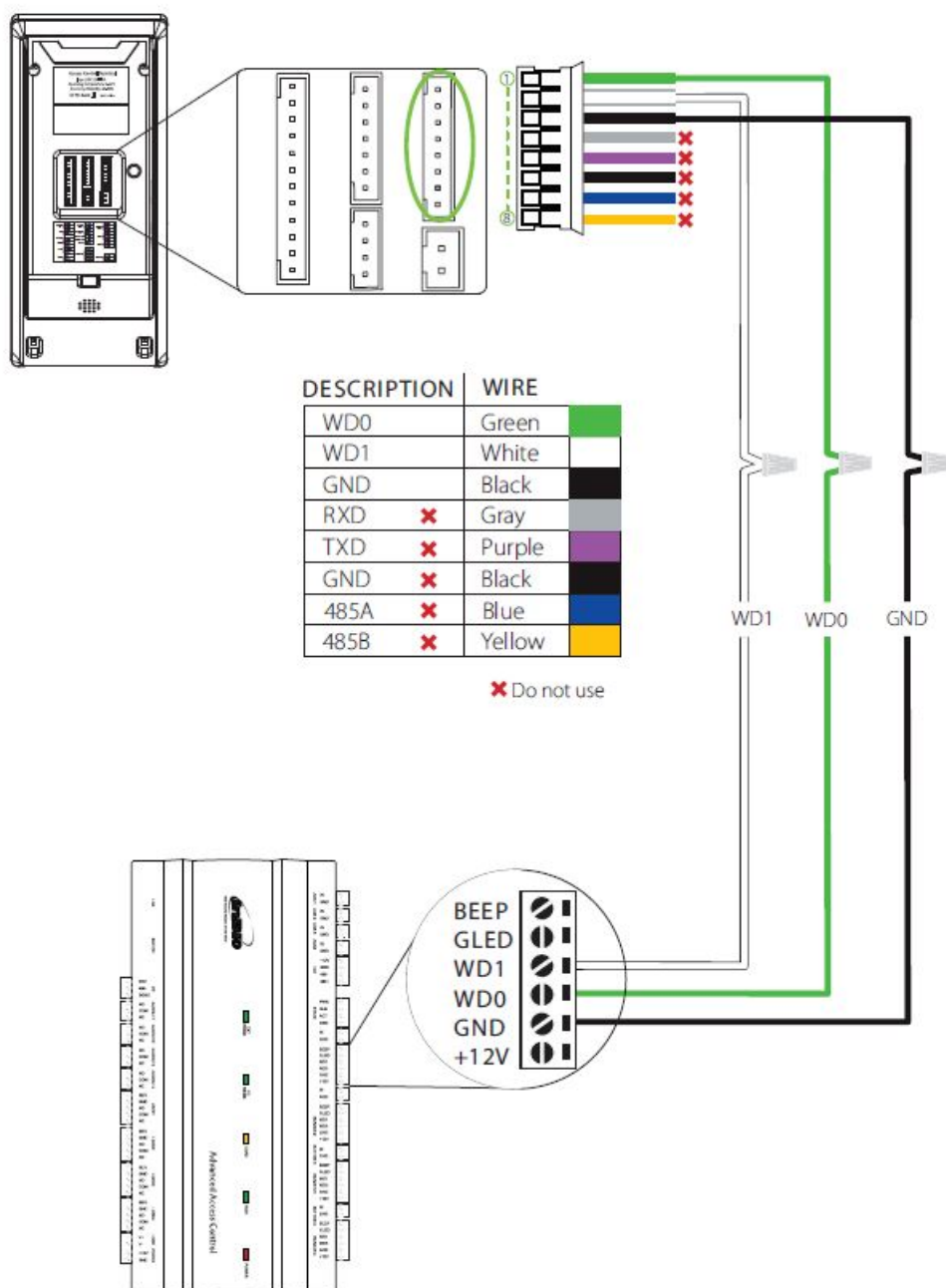
✗ Do not use

⚠ Do not reverse the polarities.

Standalone Installation



Wiegand Output Connection

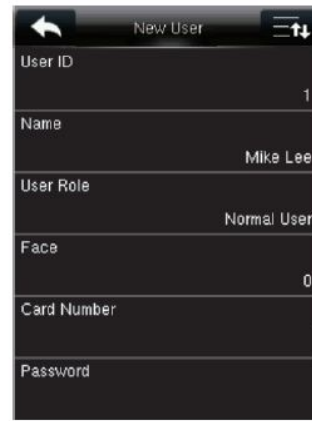
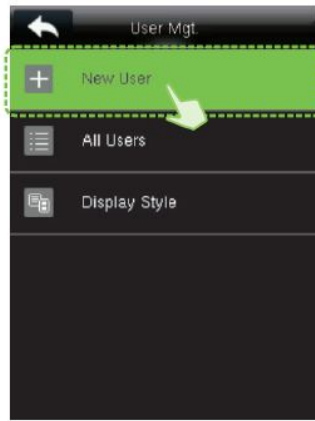


Device Operation

User Registration

When there is no Super Administrator set in the device, click on to enter the menu. Add a new user and set the User Role to Super Admin. The system will request the Administrator's verification before entering the menu. It is recommended to register a Super Administrator initially for security purposes.

Method 1: Register on the device



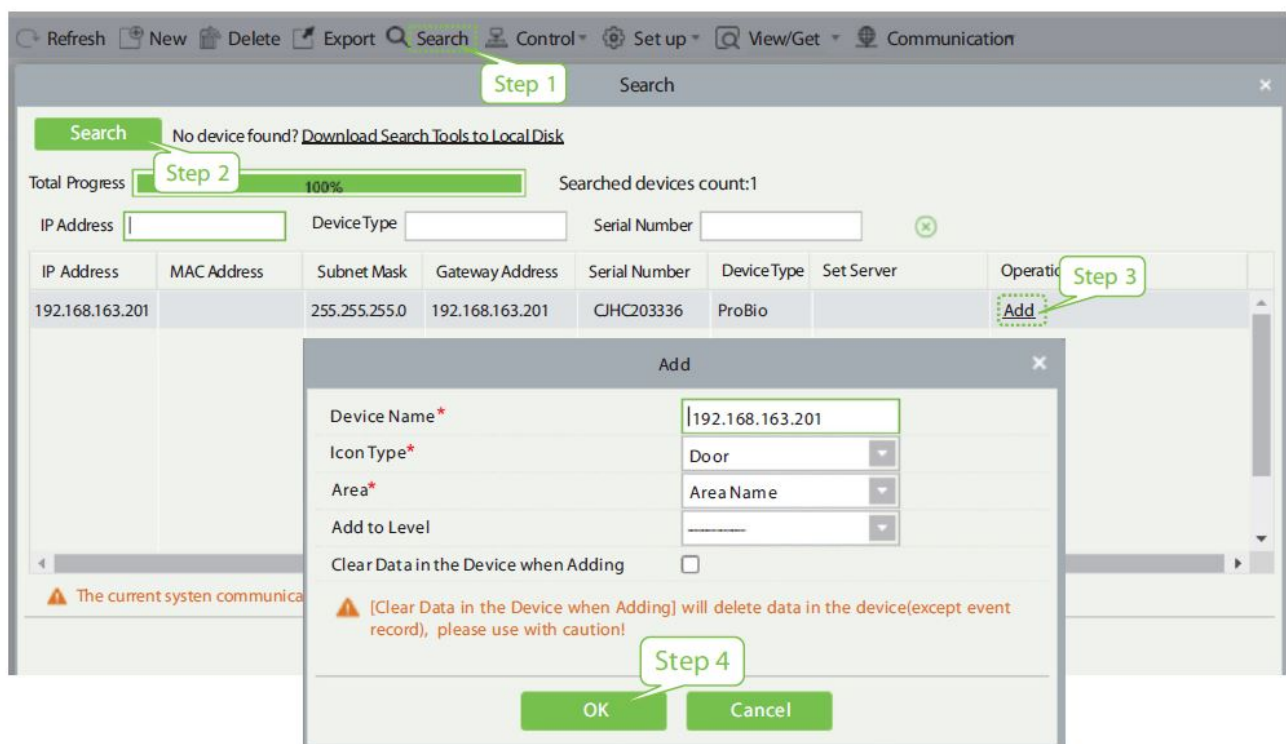
Tap on **[Main Menu] > [User Mgt.] > [New User]** to register a new user. The options include entering the User ID and Name, setting User Role, registering Face, Card Number, Password, adding User Photo, and setting Access Control role.

Tap on to register a new user. The options include entering the User ID and Name, setting User Role, registering Face, Card Number, Password, adding User Photo, and setting Access Control role

Method 2: Register on software

Please set the IP Address and Cloud Service Server Address in the menu option on the device

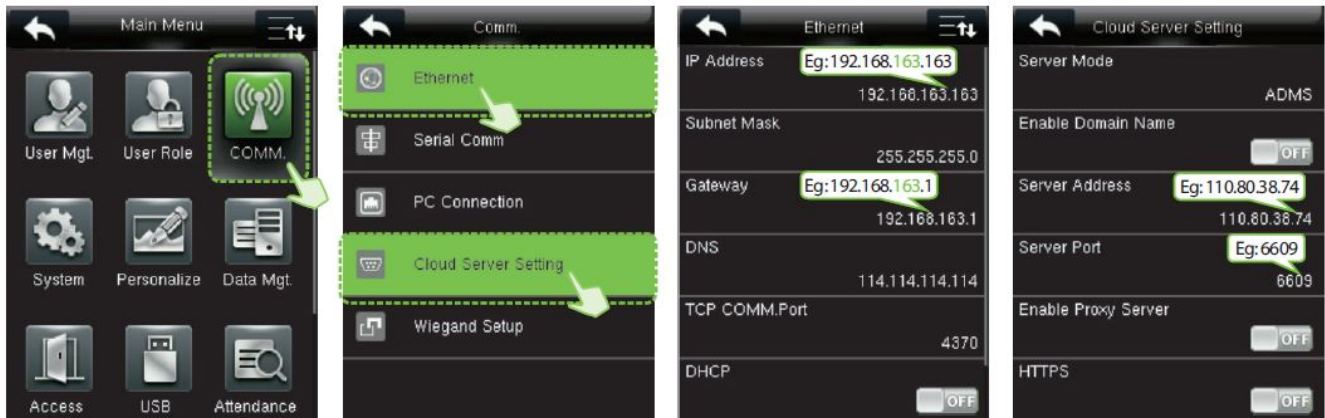
1. Click Access>>Device<Search to search the device on the software. When an appropriate Server Address and port is set on the device, the searched devices will be displayed automatically.



2. Click in the operation column, a new window will pop-up. Select the Icon type, Area, and Add to Level from each drop-down and click to add the device
3. Click Personnel>>Person>>New and fill in all the required fields to register a new user in the software.
4. Click Access>>Device>>Control>>Symchronize all data to dedvice to synchronize all the data to the device including the new users

For more details, please refer the ZKBioSecurity User Manual.

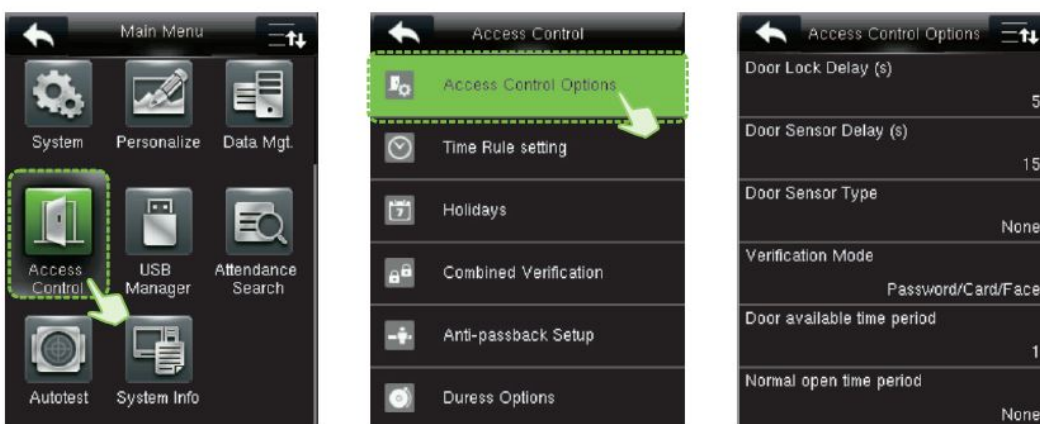
Ethernet and Cloud Server Settings



Click on > **[COMM.]** > **[Ethernet]** to set the network parameters. If the TCP/IP communication of the device is successful, the icon will be displayed in the upper right corner of the standby interface.

Click on > **[COMM.]** > **[Cloud Server Setting]** to set the Server Address and Server Port, the IP Address and Port Number of the server after the software is installed. If the device communicates with the Server successfully, the icon will be displayed in the upper right corner of the standby interface.

Access Control Settings



Click on > **[Access Control]** to enter the access control management interface and set the relevant parameters of the access control.

QR Code as the Mobile Credential

The device can recognize the QR code image on the ZKBioSecurity Mobile APP captured by the QR code scanner, making it easy to access without contact

Please set the IP Address and Cloud Service Server Address in the COMM menu option on the device.

Mobile APP Configuration

After downloading and installing the , the user needs to set the Server before login.

- a. On the Server, choose to add a registered A client. [System] > [Authority Management] > [Client Register] to add a registered A client.
- b. Open the on the Smartphone. On the login screen, tap and type the IP Address or the Domain Name of the Server, and its Port Number. App [Server Setting]

- c. Tap the QR Code icon to scan the QR code of the new client. After the client is identified successfully, set the Client Name and tap
- d. After the network is connected successfully, tap . [Save]

Employee Mobile Login

The Mobile Credential function is only valid when logging in as an employee ap on Employee to switch to Employee Login screen. Employees can login with the Personnel ID in and self-service password. The default self service password is. T[Personnel] > [Personnel] > [Person]123456.

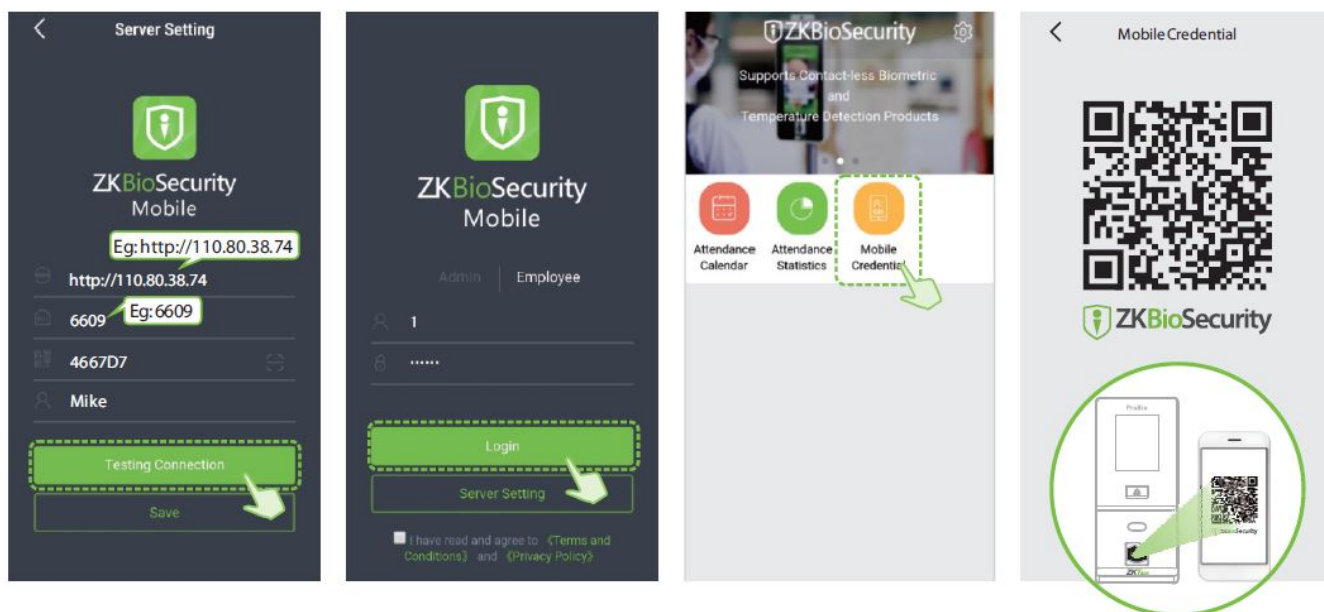
Scan the QR Code

Find the access control QR code on the ZKBioSecurity Mobile App. Show the QR code to the QR code scanner of the device. The device prompts that the verification is successful.

NOTE

- The user must have a card number registered in advance on the device or on the software
- . When scanning, the QR code and the scanner must stay parallel at a distance of 15 to 30cm.

For more details, please refer the ZKBioSecurity Mobile APP User Manual



Documents / Resources

	<p>ZKTECO ProBio(QR) USB Host [pdf] User Guide ProBio QR USB Host, ProBio QR, USB Host</p>
--	--