

ZKTeco
MSR Series
Magnetic
Stripe Card
Reader



ZKTeco MSR Series Magnetic Stripe Card Reader User Manual

[Home](#) » [ZKTECO](#) » ZKTeco MSR Series Magnetic Stripe Card Reader User Manual 

Contents

- [1 ZKTeco MSR Series Magnetic Stripe Card Reader](#)
- [2 Product Usage Instructions](#)
- [3 Frequently Asked Questions](#)
- [4 OVERVIEW](#)
- [5 FEATURES](#)
- [6 SPECIFICATIONS](#)
- [7 Dimensions](#)
- [8 Documents / Resources](#)
 - [8.1 References](#)



ZKTeco MSR Series Magnetic Stripe Card Reader



Product Usage Instructions

Connection

- Connect the MSR series Magnetic Stripe Card Reader to your device using one of the provided interfaces – USB, RS232C, or PS/2 depending on your device's compatibility.

Card Reading

- Swipe the magnetic card in either direction through the reader to read Track 1 & 2 or Tracks 1, 2 & 3 magnetic information. Ensure the card is swiped at a consistent speed for accurate reading.

LED Status

- Observe the LED indicator for status updates during card reading. The LED will provide feedback on successful card readings or any errors encountered.

Card Compatibility

- The reader accepts both high and low-coercivity magnetic cards, including credit cards, bank cards, driver's licenses, and ID cards that adhere to ISO 7811, AAMVA, and California Driver's license standards.

Maintenance

- Keep the reader clean and free from dust or debris to ensure optimal performance. Regularly inspect the reader for any signs of wear and tear.

Frequently Asked Questions

- **Q: Can this reader work with both high and low coercivity cards?**
 - **A:** Yes, the MSR series Magnetic Stripe Card Reader can read both high and low-coercivity magnetic cards.
- **Q: What type of cards can be read by this reader?**

- **A:** The reader can read credit cards, bank cards, driver's licenses, and ID cards that comply with ISO 7811, AAMVA, and California Driver's license standards.
- **Q: How do I know if the card has been successfully read?**
 - **A:** The LED indicator on the reader will provide feedback on the status of the card reading process. A successful read will be indicated by a specific LED pattern.

OVERVIEW

- The Universal Magnetic Swipe Reader can read Track 1 & 2 or Tracks 1, and 2&3 magnetic information with a single swipe in either direction.
- This reader accepts both high and low-coercivity magnetic cards and can read all ISO 7811, AAMVA, and California Driver's licenses.

FEATURES

- USB/RS232C/PS/2 interface; Bi-directional card reader
- Reads credit cards, bank cards, driver's licenses and ID cards
- All tracks are available (Tracks 1, 2 and 3)
- Small in size, easy to handle
- Reads low and high coercivity cards (300 to 4000 Oe)
- LED for status
- Watchdog

SPECIFICATIONS

Interface:

- **USB-keyboard;** USB-serial; USB-HID
- PS/2
- Serial

Cable connector:

- **USB:** standard usb
- **PS/2:** standard PS/2
- **Serial:** RS-232 DB9/ TTL 4pin

Operating:

- **Standards:** ISO/ANSI/AAMVA/CA DMV
- **Recording Method:** Two-frequency coherent
- **Message Format:** ASCII
- **Card Speed:** 10cm/sec. ~140cm.sec 5 ips ~
- **MTBF:** Electronics – 100,000 hours; Head L

Environment:

- **Operating Temp:** -20°C~ +70°C
- **Storage Temp:** -25°C~ +75°C
- **Humidity:** 10 ~ 90 % relative

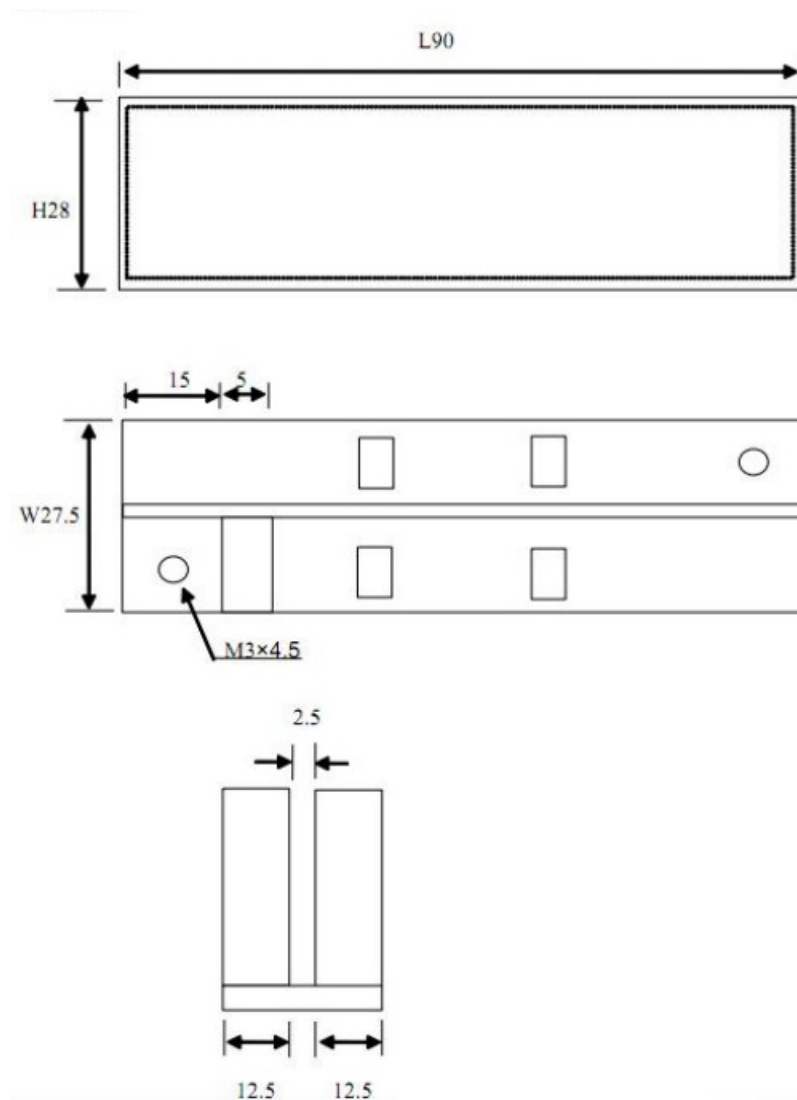
Dimensions

- **Size:** L 90 x W 27.5 x H 28 mm Weight: < 250g
- **Color:** Black


Mounting:

Portable or Any surface

Dimensions



Documents / Resources

	<p>ZKTeco MSR Series Magnetic Stripe Card Reader [pdf] User Manual</p> <p>MSR Series Magnetic Stripe Card Reader, MSR Series, Magnetic Stripe Card Reader, Stripe Card Reader, Card Reader, Reader</p>
---	--

References

- [User Manual](#)

[Manuals+](#), [Privacy Policy](#)

This website is an independent publication and is neither affiliated with nor endorsed by any of the trademark owners. The "Bluetooth®" word mark and logos are registered trademarks owned by Bluetooth SIG, Inc. The "Wi-Fi®" word mark and logos are registered trademarks owned by the Wi-Fi Alliance. Any use of these marks on this website does not imply any affiliation with or endorsement.