



# ZKTeco G4 Multi-Biometric Identification Terminal User Guide

[Home](#) » [ZKTECO](#) » ZKTeco G4 Multi-Biometric Identification Terminal User Guide 

## Contents

- [1 ZKTeco G4 Multi-Biometric Identification Terminal](#)
- [2 Safety Precautions](#)
- [3 Device Overview](#)
- [4 Ethernet & Power Connection](#)
- [5 Connecting Other Devices](#)
- [6 Menu Functions](#)
- [7 Troubleshooting](#)
- [8 Documents / Resources](#)
  - [8.1 References](#)
- [9 Related Posts](#)



## ZKTeco G4 Multi-Biometric Identification Terminal



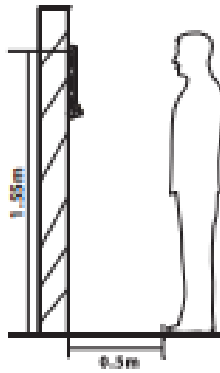
### Safety Precautions

**Before installation, please read the following precautions carefully to prevent risks and dangers to this product, users, and any other person.**

- Do not expose to direct sunlight, water, dust, and soot.  
Do not place any magnetic objects near the product. Magnetic objects such as magnets, CRT, TV, monitors or speakers may damage the device.
- Do not place the device next to any heating equipment.
- Prevent water, drinks, or chemicals from leaking into the device.
- This product is not intended for use by children unless they are supervised.
- Do not drop or damage the device.
- Do not disassemble, repair or modify the device.
- Do not use the device for any purpose other than those specified.
- Remove dust or dirt regularly. While cleaning, wipe the dust off with a smooth cloth or towel instead of water.
- Contact your supplier in case of any problem!

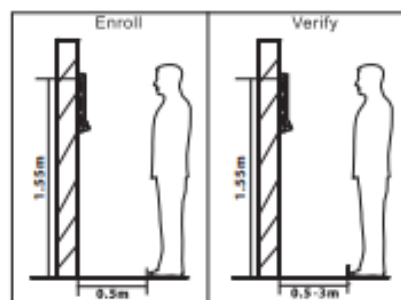
### Recommended distance

For users with a height from 1.5m to 1.8m, the recommended device height is 1.55m. It can be adjusted and installed according to the users' average height.

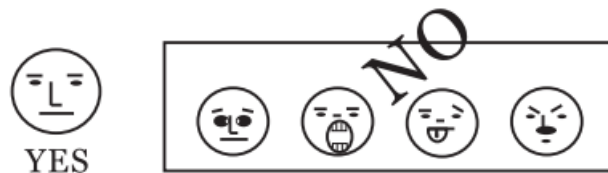


## The recommended position

The registration and verification position of the device should not be changed to avoid affecting the verification accuracy. If it is necessary to move the device, then move it horizontally and keep the vertical height same.

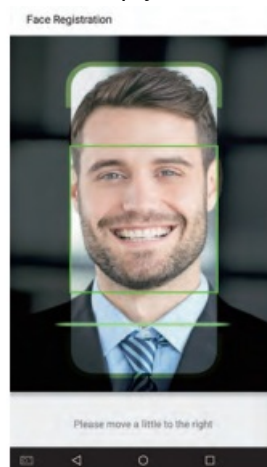


## The recommended and not-recommended facial expressions:

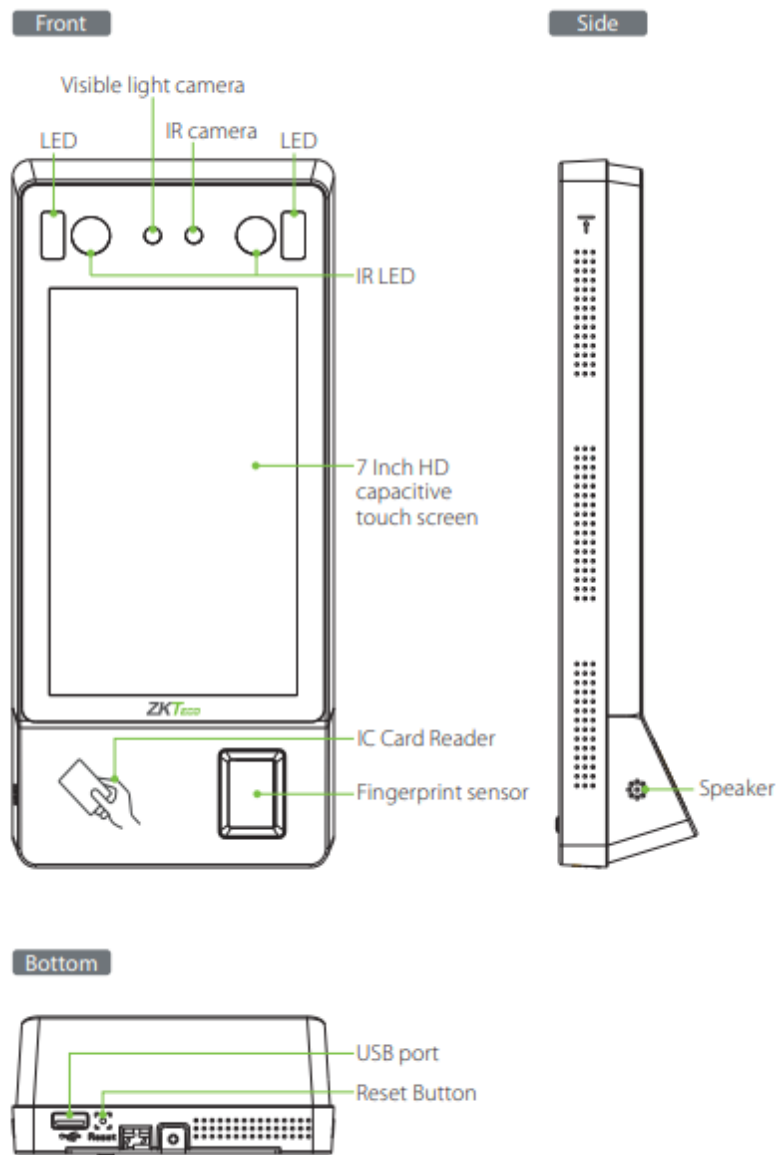


## Registration

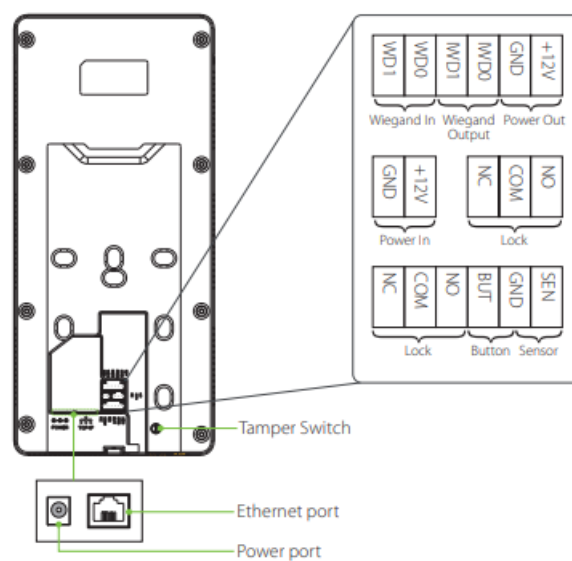
During registration, please adjust your position and keep your face inside the green frame.



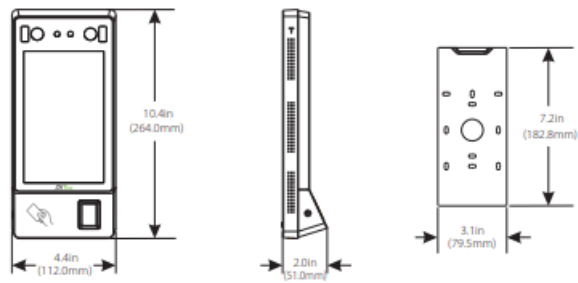
## Device Overview



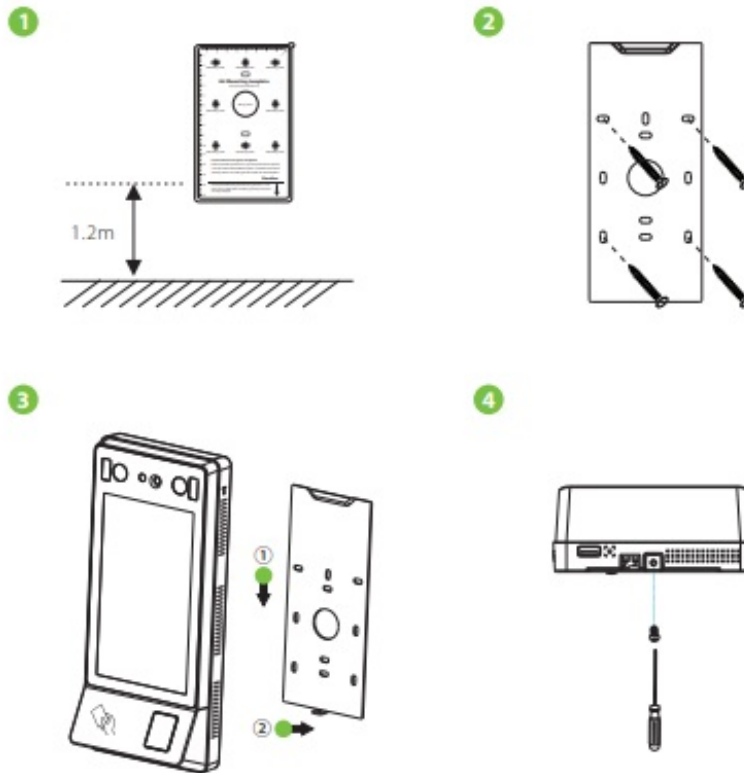
## Product PIN Diagram



## Product Dimensions



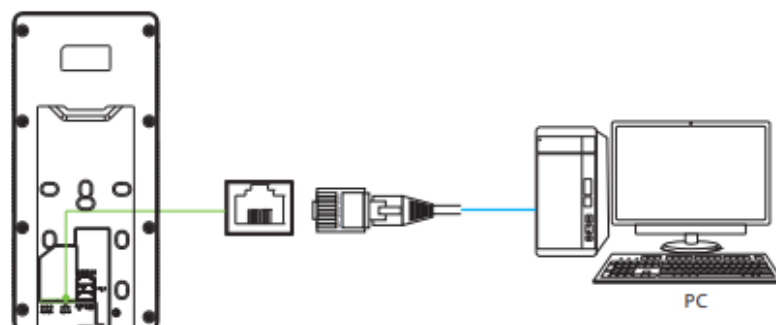
## Mounting the device on wall



- Paste the mounting template sticker onto the wall, and drill holes according to it.
- Fix the back plate to the wall with wall mounting screws.
- Attach the device to the back plate.
- Fasten the device to the back plate with a security screw.

## Ethernet & Power Connection

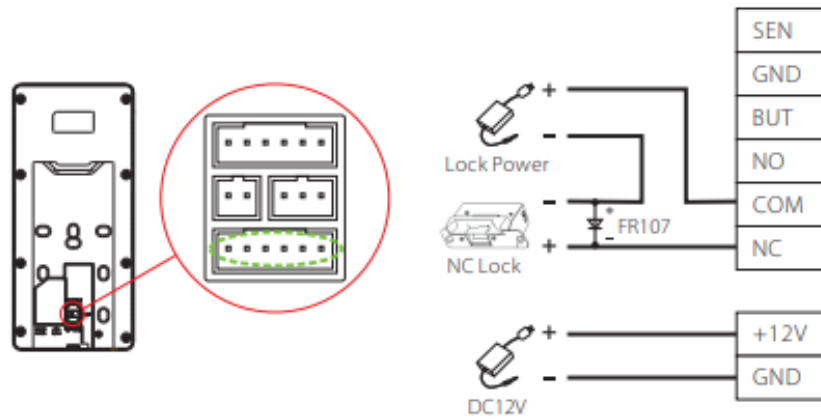
### LAN Connection



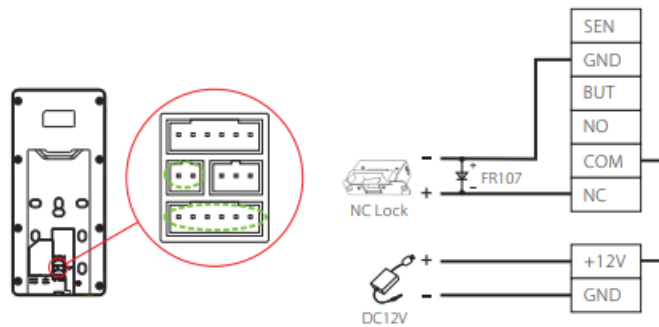
## Power Connection

The system supports Normally Opened Lock and Normally Closed Lock. The diagrams shown hereafter represents Normally Closed Lock.

Device not sharing power with the lock is shown below:

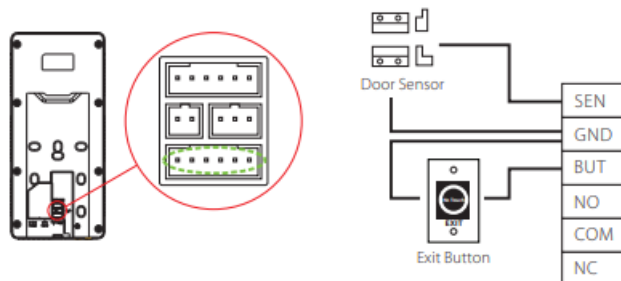


Device sharing power with the lock is shown below:

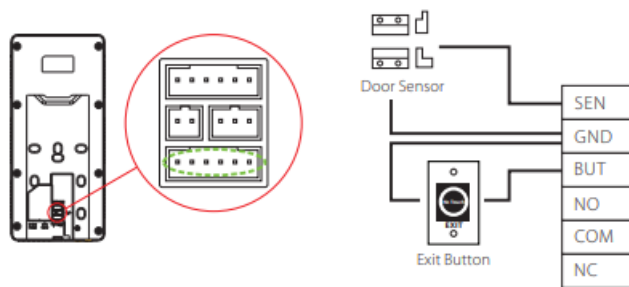


## Connecting Other Devices

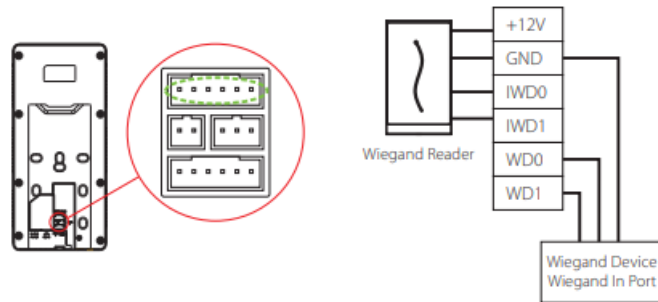
### Button & Sensor Connection



### Alarm Connection



## Wiegand Connection

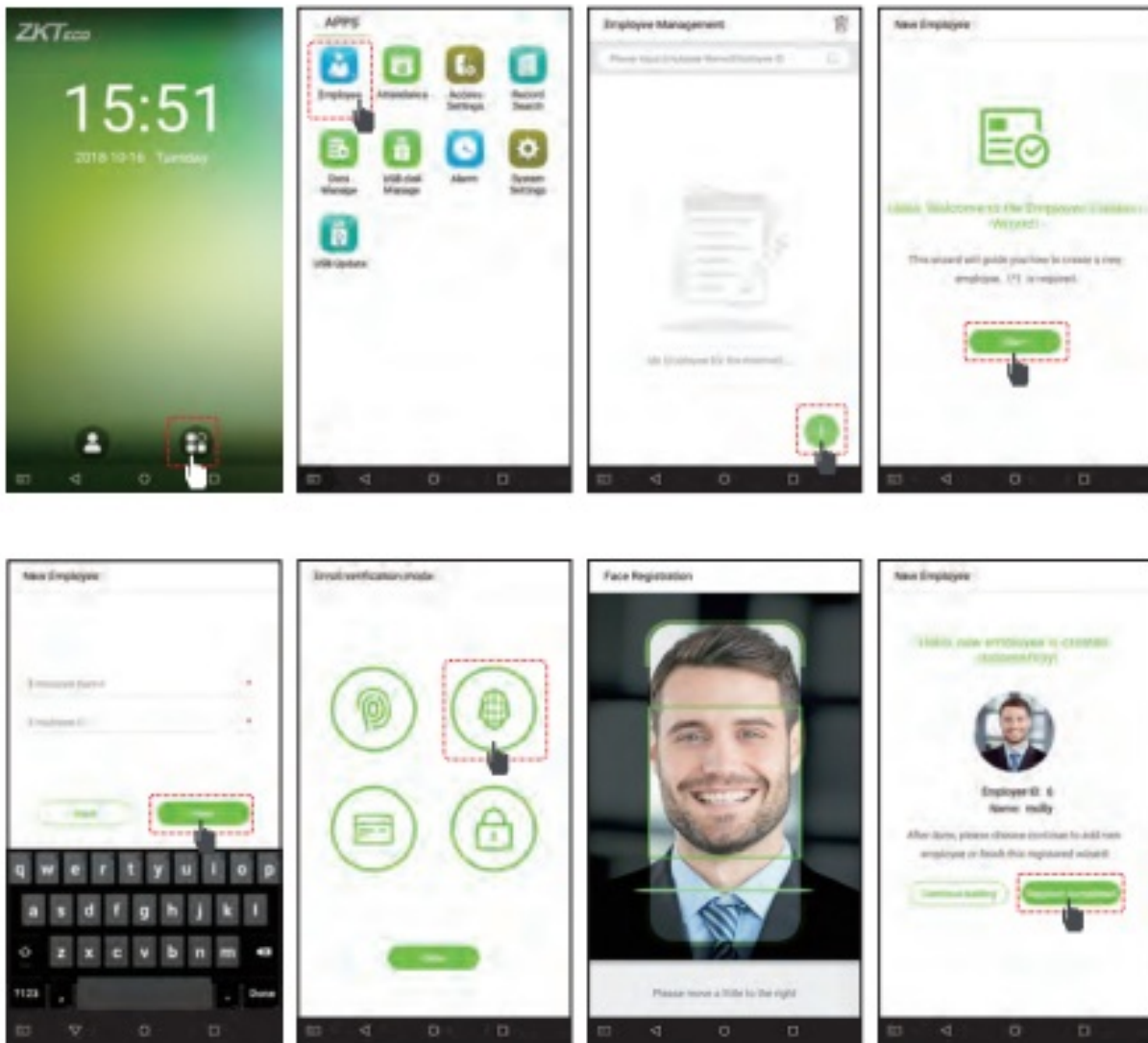


## Standalone Installation



## Menu Functions

## Enroll New User



Go to Main Menu > Employee Management > > New Employee > Enroll verification mode. Settings include entering Employee Name, ID, choosing User Role (Normal User is not authorized to operate the menu options of the device. Super Admin can operate all the menu options of the device), registering Fingerprint, Face Registration, Enroll Badge Number (ID and Mifare card are optional) and setting Password,.

## Access Settings





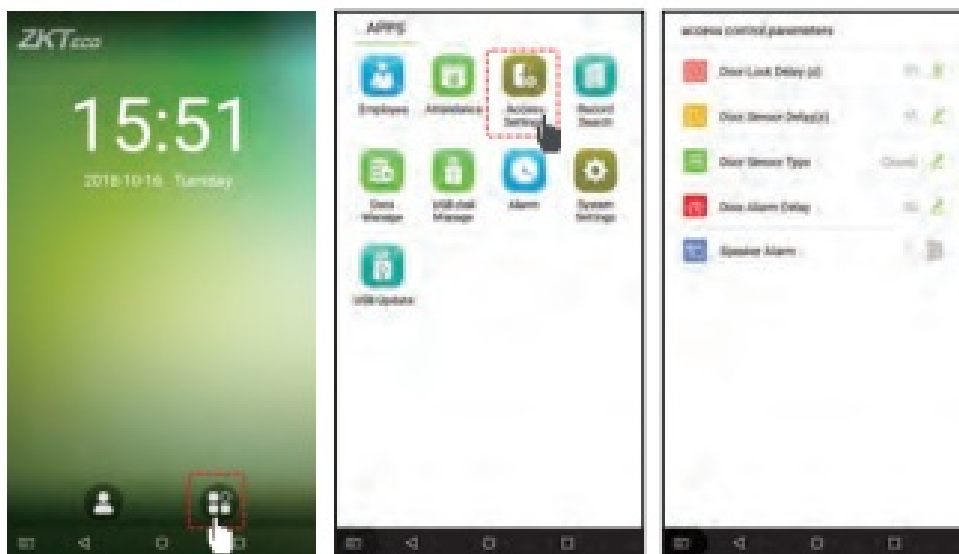
Go to Main Menu > Access Settings > Access control parameters to enter Access control parameters setting interface.

## Network Settings



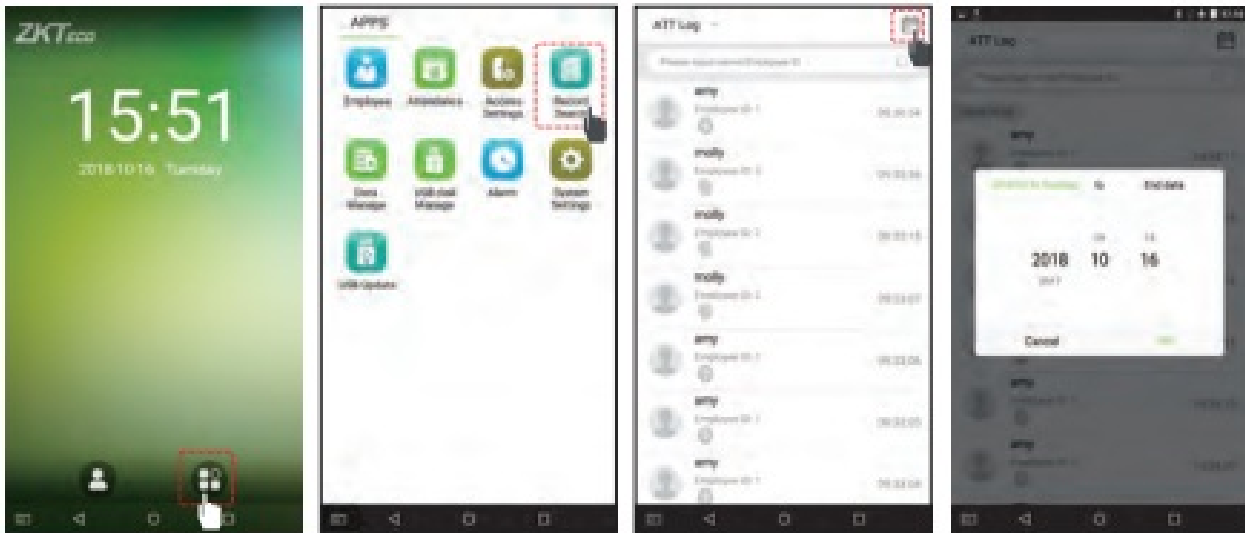
Go to Main Menu > System Settings > Network Settings, set the IP Address. The device will communicate with PC via the Ethernet parameters. Using Cloud Service Settings sets Server Address and Server port according to the server.

## Network Settings



Go to Main Menu > System Settings > Network Settings, set the IP Address. The device will communicate with PC via the Ethernet parameters. Using Cloud Service Settings sets Server Address and Server port according to the server.

## Record Search



View records in the device: Go to Main Menu > Record Search > Att Log enter Name or Employee ID (if user ID field is left blank, records of all users will be displayed) > select Time Range > press OK, the corresponding attendance logs will be displayed. View records on computer: Go to Main Menu> USB disk Management > USB disk Download. Insert the USB disk correctly and download the data to the USB drive, then copy this data from the USB drive to your PC. The downloaded data filename will be "Device Serial Number.dat", you can open and view it.

## Date and Time Settings






Go to Main Menu > System Settings > Date and Time, to enter Date and Time setting interface.

## Troubleshooting

1. Fingerprint cannot be detected or it takes too long.
2. Failed to gain access after successful verification.
3. Door does not open after successful verification.

## Documents / Resources

	<p><a href="#">ZKTeco G4 Multi-Biometric Identification Terminal</a> [pdf] User Guide G4, Multi-Biometric Identification Terminal</p>
	<p><a href="#">ZKTeco G4 Multi-Biometric Identification Terminal</a> [pdf] User Guide G4, Multi-Biometric Identification Terminal, G4 Multi-Biometric Identification Terminal</p>
	<p><a href="#">ZKTeco G4 Multi-Biometric Identification Terminal</a> [pdf] User Guide G4, Multi-Biometric Identification Terminal, G4 Multi-Biometric Identification Terminal</p>

References

- [ZKTeco | Home Page](#)