



Contents [[hide](#)]

- [1 ZKTECO E2 Series Horus Access control terminal](#)
- [2 Product Specifications](#)
- [3 Installation Environment](#)
- [4 Install on the wall](#)
- [5 Terminal Block](#)
- [6 Ethernet Connection](#)
- [7 Power Connection](#)
- [8 Alarm & RS485 Reader Connection](#)
- [9 Wiegand Reader & Access Control Connection](#)
- [10 Lock Relay Connection](#)
- [11 Download Center](#)
- [12 Frequently Asked Questions](#)
- [13 Documents / Resources](#)
 - [13.1 References](#)



ZKTECO E2 Series Horus Access control terminal



Product Specifications

- Product Name: Horus E2 Series
- Version: 1.0
- Installation: Indoor Use Only
- Power Input: AC Adapter DC12V, 3A
- Network Interface: Ethernet Connection

Installation Guide

About the Device Installation

Please refer to the following recommendations for installation:

Installation Environment

- Install indoors only
- Avoid installation near glass windows, direct sunlight, and heat sources

Wall Installation

1. Attach the mounting template sticker to the wall
2. Drill holes according to the mounting paper
3. Fix the backplate on the wall with the wall mounting screws
4. Pass wires through the wiring hole and connect them to the device
5. Snap the device onto the backplate and push it down into place
6. Fasten the device to the backplate with two security screws

Network Interface Setup

Establish the connection between the device and the software using an Ethernet cable. Follow the provided example for setting up IPP addresses.

Power Connection

Use an AC adapter with recommended specifications. To share power with other devices, use an AC adapter with higher current ratings.

Exit Button, Door Sensor & Auxiliary Connection

Connect the exit button, door sensor, and auxiliary input according to the specified terminals.

Alarm & RS485 Reader Connection

Connect the alarm and the RS485 reader as per the provided instructions.

Wiegand Reader & Access Control Connection

Connect the Wiegand reader and the access controller based on the given connections.

Lock Relay Connection

The system supports both Normally Opened Lock and Normally Closed Lock. Follow the instructions for connecting the lock relay.

About the Device Installation

Please refer to the following recommendations for installation.

Installation Environment



INSTALL INDOORS
ONLY



AVOID INSTALLATION
NEAR
GLASS WINDOWS



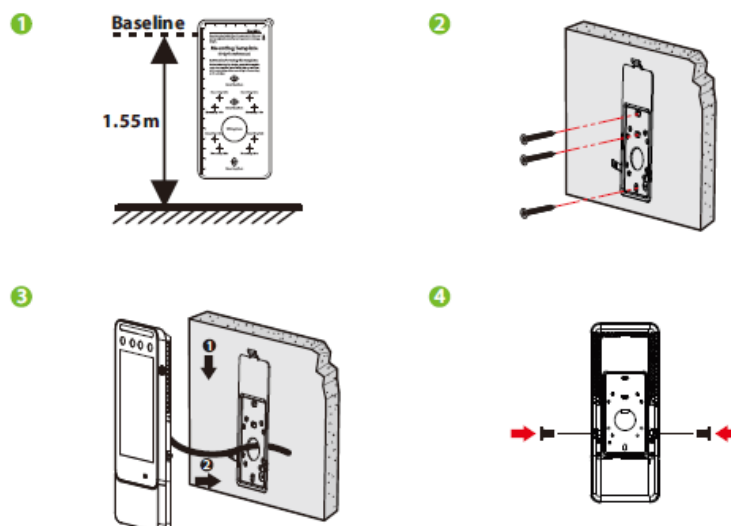
AVOID DIRECT
SUNLIGHT
AND EXPOSURE



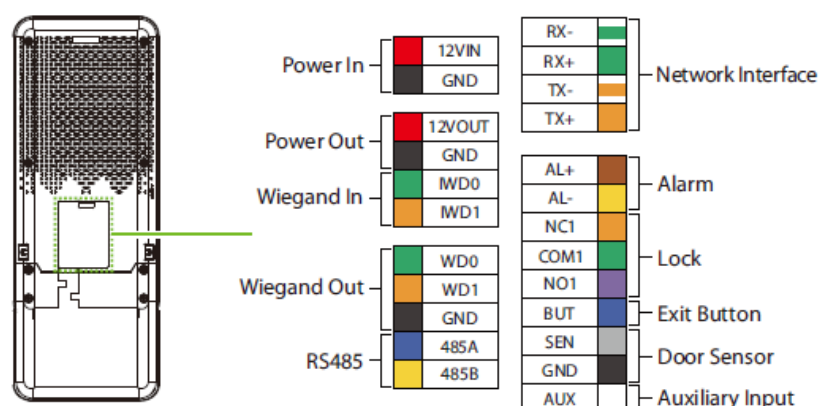
AVOID USE OF ANY
HEAT SOURCE
NEAR THE DEVICE

Install on the wall

1. Attach the mounting template sticker to the wall, and drill holes according to the mounting paper.
2. Fix the backplate on the wall with the wall mounting screws.
3. After passing the wires through the wiring hole and connecting them to the device, and then snap the device onto the backplate and push it down into place.
4. Fasten the device to the backplate with two security screws.

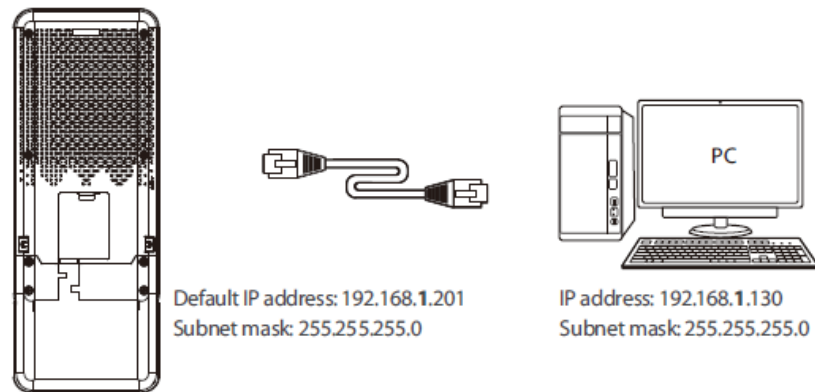



Terminal Block



Ethernet Connection

Establish the connection between the device and the software using an Ethernet cable.
An illustrative example is provided below:

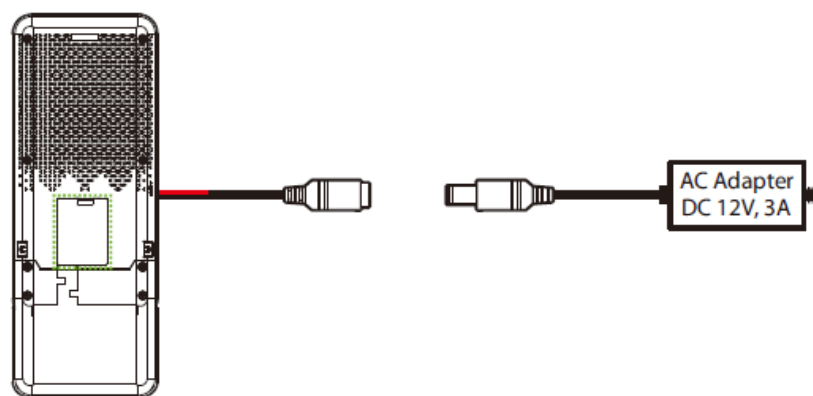


Tap  to enter the main menu. And then click on [Comm.] > [Ethernet][IP Address] to input the IP address.

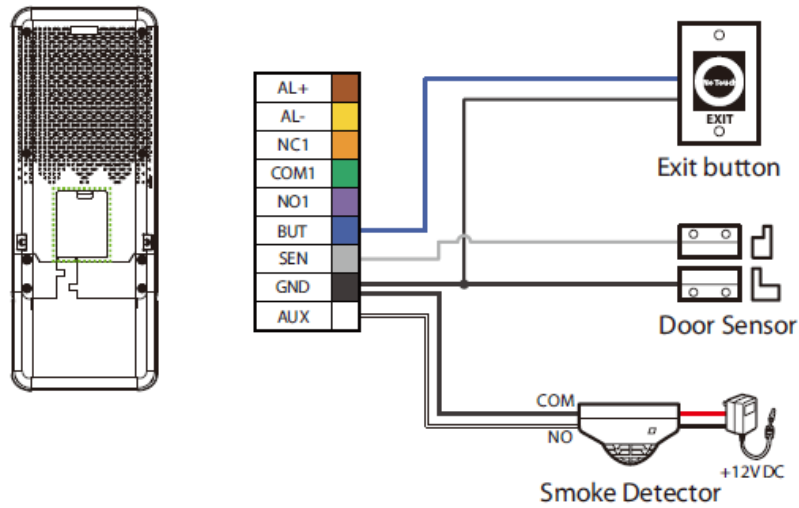
Note: In LAN, IP addresses of the server (PC) and the device must be in the same network segment when connecting to the software.

Power Connection

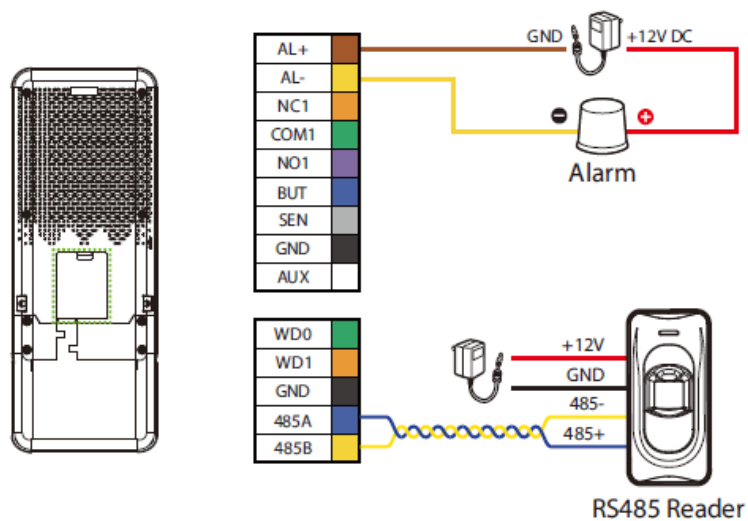
- Recommended AC adapter: 12V, 3A
- To share power with other devices, use an AC adapter with higher current ratings.



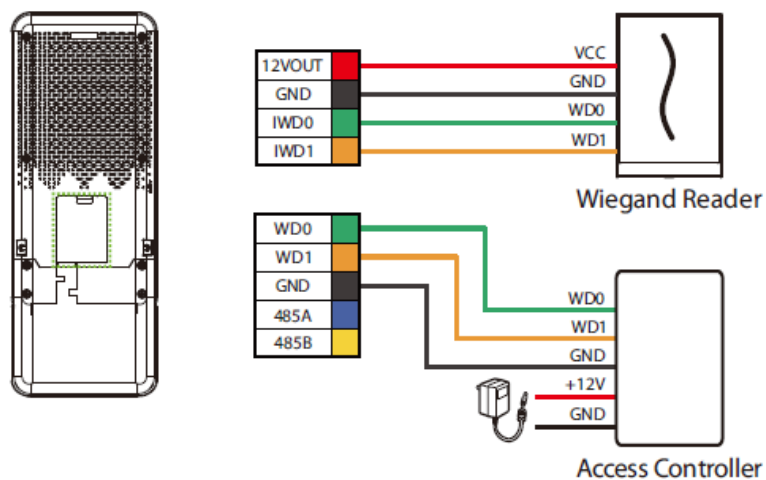
Exit Button, Door Sensor & Auxiliary Connection



Alarm & RS485 Reader Connection



Wiegand Reader & Access Control Connection

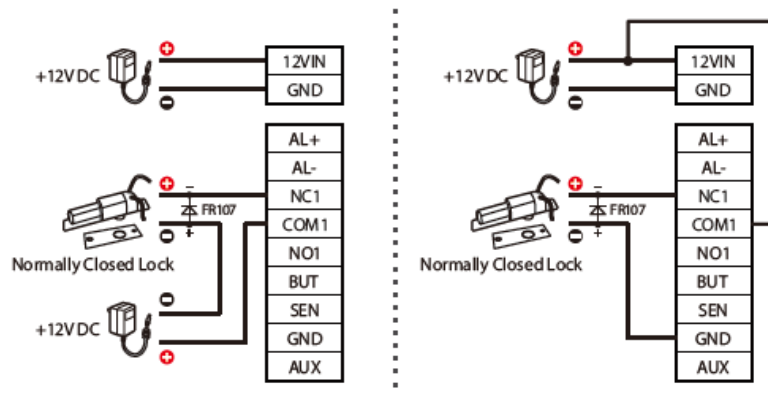


Lock Relay Connection

The system supports both Normally Opened Lock and Normally Closed Lock. The NO

LOCK (normally opened at power on) is connected with 'NO' and 'COM' terminals, and the NC LOCK (normally closed at power on) is connected with 'NC' and 'COM' terminals. Take NC Lock as an example below:

1. The device is not sharing power with the lock
2. Device sharing power with the lock



Download Center

Scan the QR Code to download the User Manual, Installation Guide, and Quick Start Guide.



ZKTeco Industrial Park, No. 32, Industrial Road, Tangxia Town, Dongguan, China.

- Phone: +86 769 – 82109991
- Fax: +86 755 – 89602394
- www.zkteco.com

Copyright 2024 ZKTECO CO., LTD. All Rights Reserved.

Frequently Asked Questions


- **Q: Can I install this product outdoors?**

A: No, this product is designed for indoor use only.

- **Q: What type of power adapter should I use?**

A: Use an AC adapter with a DC12V, 3A output. For sharing power with other devices, use an adapter with higher current ratings.

Documents / Resources

	ZKTECO E2 Series Horus Access control terminal [pdf] Installation Guide E2 Series, E2 Series Horus Access control terminal, E2 Series, Horus Access control terminal, Access control terminal, control terminal, terminal
---	--

References

- [User Manual](#)

📁 ZKTECO

🔍 Access Control Terminal, Control Terminal, E2 Series, E2 Series Horus Access control terminal, Horus Access control terminal, Terminal, ZKTECO

Leave a comment

Your email address will not be published. Required fields are marked *

Comment *

Name

Email

Website

☐ Save my name, email, and website in this browser for the next time I comment.

Post Comment

Search:

Search

[Manuals+](#) | [Upload](#) | [Deep Search](#) | [Privacy Policy](#) | [@manuals.plus](#) | [YouTube](#)

This website is an independent publication and is neither affiliated with nor endorsed by any of the trademark owners. The "Bluetooth®" word mark and logos are registered trademarks owned by Bluetooth SIG, Inc. The "Wi-Fi®" word mark and logos are registered trademarks owned by the Wi-Fi Alliance. Any use of these marks on this website does not imply any affiliation with or endorsement.