




# ZIZOCCI VS-88 String Lights User Manual

[Home](#) » [ZIZOCCI](#) » ZIZOCCI VS-88 String Lights User Manual 

## ZIZOCCI VS-88 String Lights User Manual



### Contents

- 1 Software overview
- 2 Operating environment
- 3 How to use
- 4 Product Basic Parameters
- 5 Instructions for Remote Control
- 6 Spectrum
- 7 LED Bulb String Light
- 8 Documents / Resources
  - 8.1 References
- 9 Related Posts

## Software overview

### Overview

- Magic Lantern is a mobile APP program that is compatible with Apple or Android system to control LED string lights.
- The APP control replaces traditional infrared, 433, 2.4G and other old remote control methods, which is convenient, fast, powerful and extensible!
- The color, brightness and color temperature of the LED string light can be intelligently controlled through the APP to display various flashing modes and the string light can jump with the rhythm of the music. Just open the Intelligent APP control software. APP can connect one or more LED string lights via Bluetooth to regulate various settings and control several strings LED lights. The operation is very simple, easy to learn and use!

## **Function**

- LED string light supports 60 thousands of light colors and brightness adjustment when you set it up to multiple colors mode. When light displays single color, you can only adjust brightness and color temperature. Playing mobile phone music or turning on an audio playback device can make the light change its color and brightness with the rhythm of the music, and the effect of light fluctuation is beautiful.
- A variety of preset light modes, automatic change its effect separates from the control of the mobile phone.
- Long-distance control without distance limitation, and group to group control mode;
- Led string lights will automatically connect to your Bluetooth next time once successful connected.

## **Performance**

Magic Lantern APP is easy for use as well as great compatible for all kinds of smart phones. The test verification of hundreds of mobile phones have proved that APP can be compatible with more than 95% of the mobile phones on the market. APP is small and convenient to use. it occupies less system resources, and has low requirements for configuration of mobile phone. It barely appears control delay, the operation feels good, the light control is very smooth with people's visual sense.

## **Operating environment**

This APP requires mobile phone system is Android 4.3 and iOS 8.0 or higher. No limitation on configuration of mobile phone.

## **How to use**

**Note:** The Android system and iOS system are basically the same for downloading and operating. Here, the Android system is used as an example for explanation.

## **APP download**

Both iOS and Android systems can download the Magic Lantern by scanning the QR code.



After the software is successfully downloaded and installed, click APK to install, After the installation is complete, the following program icons will appear on the desktop:



**Magic Lantern**

### **Software operation**

1. Click the Magic Lantern APP



2. After entering the APP interface, if Bluetooth does not turn on, it will pop up “An application wants to turn on the Bluetooth function of this device” Click [Allow]:



3. Switch to color and brightness interface:



4. Click to show the light list, view light list:



5. Click to RGB manual adjustment view:



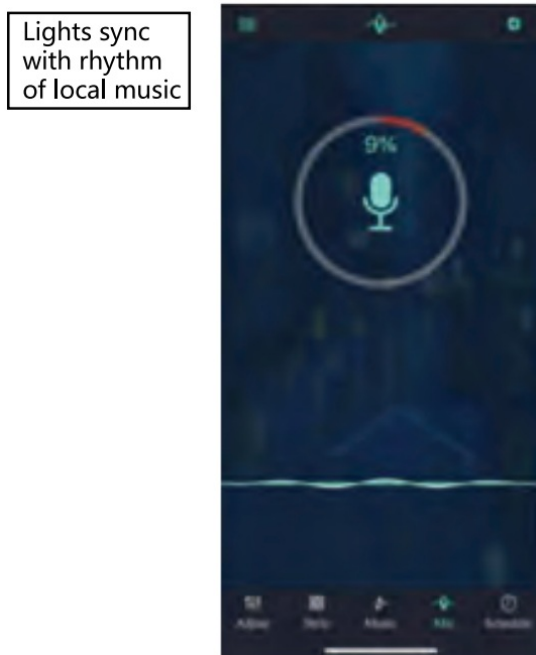
6. Switch to the select modes:



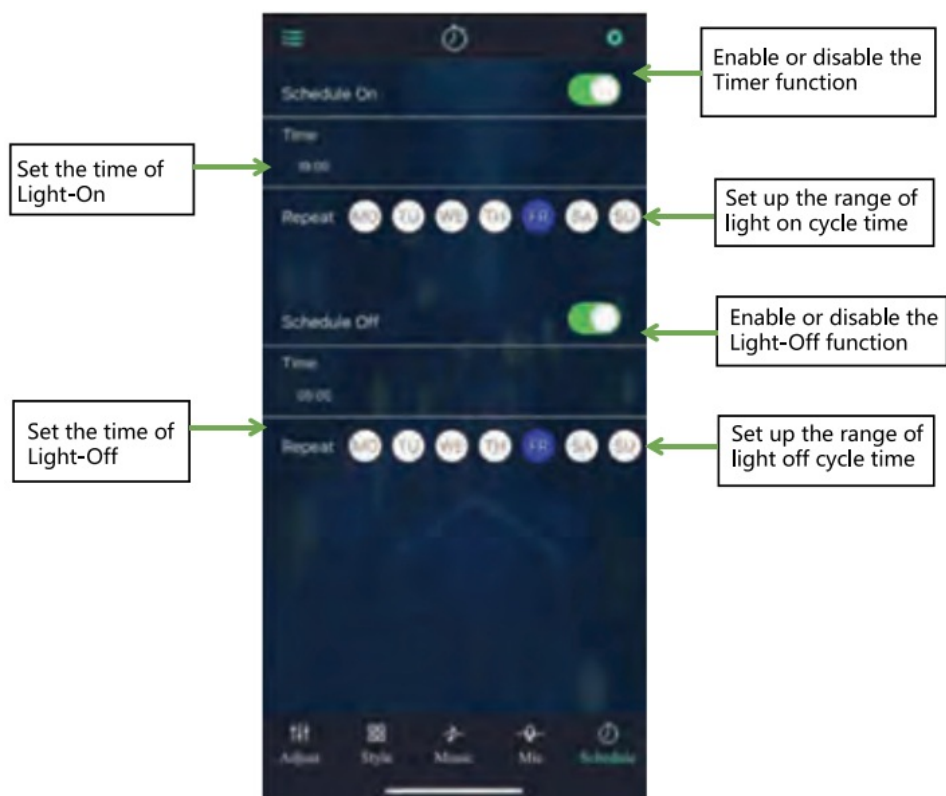
7. Switch to the music rhythm interface:



8. Lights sync with rhythm of external music





9. Switch to the schedule interface:



## Product Basic Parameters

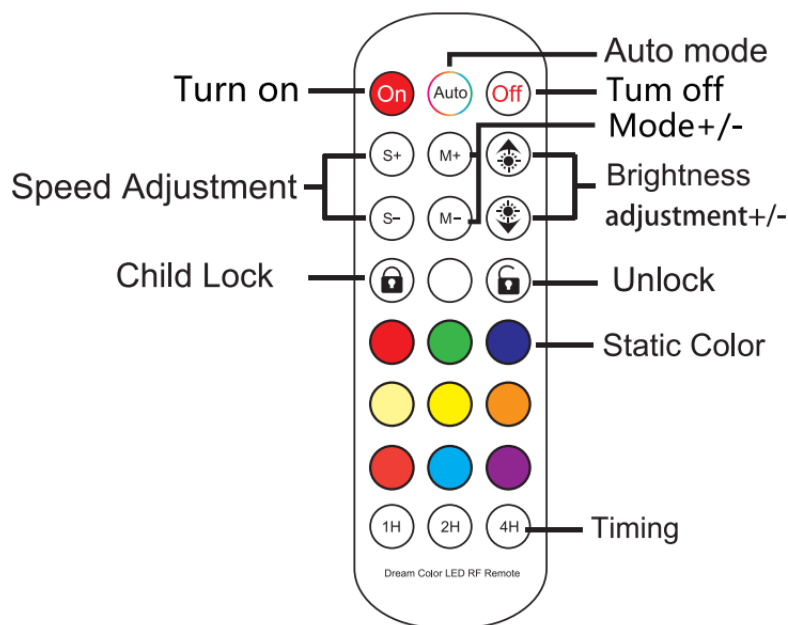


Na	Specifications	Parameters (Unit)	Picture:
1	Model No	DFQY-SS14	
2	Diameter	25 heads 15M	
3	Lamp Weight	7009±109	
4	Color	Black	
5	Base Type	C35	
	Housing — Material	PVC	<p>Diameter: (Unit mm)</p> 
	Lens—Material Power	PS	
6	Box—Material	PC	
7	Dimmable	<input checked="" type="checkbox"/> Yes <input type="checkbox"/> NO	
8	Control Distance	Within 20m	
9	Output power:	10W	
10	Output voltage:	AC85V -265V 25pcs, 5050 RGB	
11	LED	LED0.2W 30mA testing	
12	Lifetime	25000H(Ta=25°C )	
13	IPRating	IP66	
14	Color Temp	2700k-6000k	
15	Lumen	5LM each	
16	Work Temp	-20°C —+40 °C	
17	Work Humidity	10 %-65 %	
18	Storage Temp	-30°C —+70°C	
19	Storage Humidity	10%-90%	
20	Lights Function Control	APP Control & Remote Control	

## Instructions for Remote Control

### Remote control function





### Caution:

### Warranty:

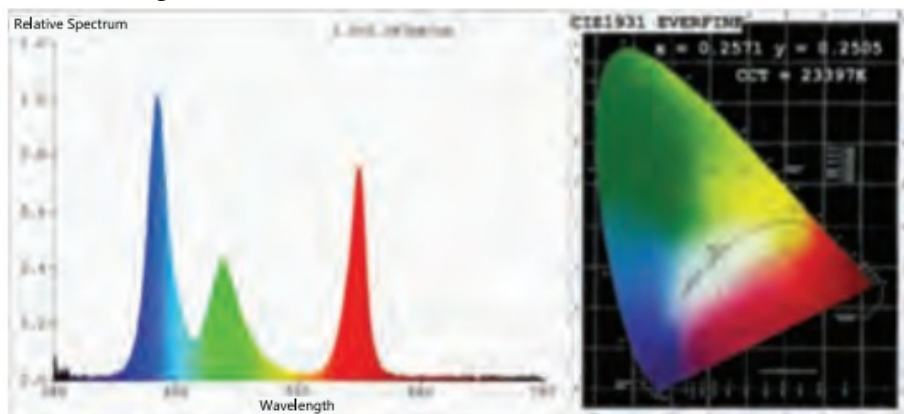
Do not use chemical liquid as volatile alcohol, gasoline or other corrosive liquids to clean the products, these will make damage to the product, thus affecting the lifetime of the product.

### Warning:

1. When using this product, please pay attention to high voltage safety, make sure the AC is cut off when wiring
2. Check all circuits after the product completely assembled, make sure there is nothing wrong with the circuit before connecting with power supplies.
3. Maintenance of lamps must be operated by professional technicians, Please don't disassemble it if you are not the professional technician.
4. If the product is used in a non-airtight environment, it cannot be covered with any insulation material.
5. Long time exposure to sunlight or UV can cause the gum to discolor.
6. Please do not use it together with the materials containing sulfur.
7. Please do not use it in conditions of high moisture or oxidizing gas such as CL, H<sub>2</sub>S, NH<sub>3</sub>, SO<sub>2</sub>, NOX, etc

### Spectrum

#### Data for Single Bulb:



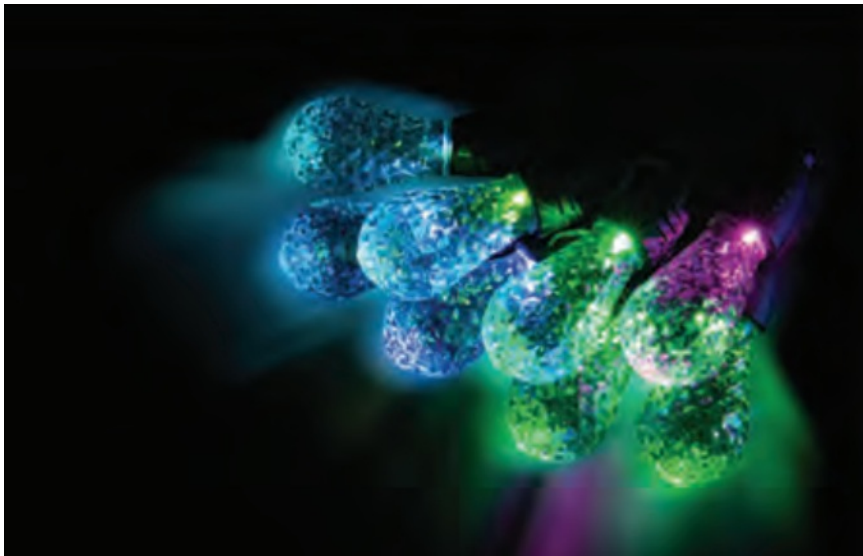
Color Parameter:  
Chromaticity Coordinates:  
 $X=0.2571$   $y=0.2505$   $u'=0.1872$   $v'=0.4105$   
Correlated Color Temperature:  
CCT=23397K(Chromatic Aberration Duv=-0.0043)  
Dominant Wavelength:  
Ad=475.3nm Color Purity:  
Purity 33.9% Color Ratio:R=25.6% G=61.2% B=13.1%  
Peak Wavelength:Ap=463.6nm  
Half peak bandwidth: FWHM-18.4nm  
Color Rendering Index:  
Ra=34.3 CRI=30.7 Avg=28.6 R1=8 R2=43 R3=69 R4=31  
R5=33 R6=41 R7=50 R8=0 R9=0 R10=0 R11=19 R12=47  
R13=13 R14=77 R15=0  
Photometric Parameters:  
Luminous Flux: -4.4191lm Light Effect:1.22 lm/W  
Radiant Flux: @e=20.19mW  
Electrical Parameters:  
Voltage V=120.01v Current I=0.06514 A Power P=3.621  
Power Factor PF=0.4632  
Grade :OUT White Light Classification :OUT  
Instrument Status: T=4737ms Ip=16000(248)

### Customer Quality Assurance

The warranty period of this product is (24) months. During the warranty period, if it is not artificially damaged, we will replace it or refund it. Just contact us by Email or Facebook, we will be here to serve you. We try our best to ensure that your products are of excellent quality and meet the highest standards. You can expect every product to have outstanding quality and durability.

**Important:** You may be asked to provide proof of purchase, such as a screenshot of the order number or order details. If you can attach a video or photo to describe the problem, we would appreciate it.

### LED Bulb String Light



### ATTENTIONS:

1. Light string lights must be powered under 24V
2. Remote control must be aligned to the infrared receive

3. The led strips light must be connected correctly according

**Manufacture:** ZIZOCCI.LLC

**Address:** 30 N GOULD ST STE R SHERIDAN, WY 8280 USA

**Tel:** +86 13128741851

# ZIZOCCI

---

## Documents / Resources



[ZIZOCCI VS-88 String Lights](#) [pdf] User Manual  
VS-88 String Lights, VS-88, String Lights, Lights

## References

- [User Manual](#)