



ZIRCON Pi-Prime Speed Com Black UPS 1000VA 800W Owner's Manual

[Home](#) » [ZIRCON](#) » ZIRCON Pi-Prime Speed Com Black UPS 1000VA 800W Owner's Manual 

Contents

- [1 ZIRCON Pi-Prime Speed Com Black UPS 1000VA 800W Owner's Manual](#)
- [2 FEATURES](#)
- [3 Advance Protection](#)
- [4 Exceptional efficiency, manageability and energy metering capabilities for IT managers](#)
- [5 Manageability](#)
- [6 Performance and Efficiency](#)
- [7 Availability and Flexibility](#)
- [8 Read More About This Manual & Download PDF:](#)
- [9 Documents / Resources](#)
 - [9.1 References](#)

ZIRCON Pi-Prime Speed Com Black UPS 1000VA 800W Owner's Manual



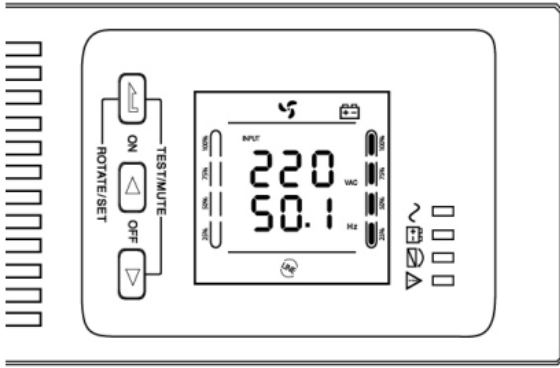
FEATURES

- Fully Pure sine wave
- Digital Display
- Output power factor (PF.) 0.8
- DSP digital control Technology
- Boost and buck AVR voltage stablition
- frequency adaptive ± 2
- Adjustable charge current and battery shutdown point.
- Settable no-load shutdown
- Humanized alarm system
- Power On Self Test, Cold start
- Automatic startup when AC recovers
- Intelligent battery management
- Short Automatic circuit charging and overload at UPS protection Off mode
- USB & RJ45, AS400/SNMP (optional) communication port



SNMP Card (Optional)

Intuitive LCO display forease of cfnfguration and management



Advance Protection



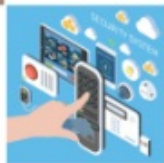
*Server
Network Devices*

*Gaming Com /PSU80+
PS4/iMac*



Medical

*Secutity
system*



Exceptional efficiency, manageability and energy metering capabilities for IT managers

Manageability

The new graphical LCD display provides clear information on the UPS's status and measurements on a single screen

Enhanced configuration capabilities are also available with easy-to-use navigation keys. Server A Network Devices the PI-Prime can meter energy Load: Display WATT and VA values of the connected load, depending on load type and load capacity

- Input: Display the input voltage and input frequency

- Output: Display UPS output voltage and output frequency
- Temperature: Display the temperature inside the cabinet
- Battery: Display the battery voltage and battery capacity

Performance and Efficiency

With an optimised electrical design, the PI-prime can provide up to 99% efficiency, reducing cooling and utility costs. With a power factor of 0.8, the PI-prime delivers more real output power. The PI-prime is compatible with all modern IT equipment.

Availability and Flexibility

The PI-prime is available in a rack/tower convertible.

Stronger, longer battery life: ZIRCON battery management technology uses an innovative three-stage charging technique that only recharges the battery when necessary, so the battery experiences less corrosion and service life is prolonged by up to 50%.

MODEL	PI-Prime 500	PI-Prime 1000	PI-Prime 1500	PI-Prime 2000	PI-Prime 3000	
Capacity	500 VA / 300 W	1000 VA / 800 W	1500 VA / 1200 W	2000 VA / 1600 W	3000 VA / 2400 W	
DC INPUT						
Rated voltage	12 V	24 V	36 V (S) 48 V (H)	48 V		
DC input range (default)	10 ~ 15 V	20 ~ 30 V	30 ~ 45 V (S) 40 ~ 60 V (H)	40 ~ 60 V		
AC INPUT						
Input Voltage	220 / 230 / 240 Vac +/-25%					
Frequency input range	50 / 60 Hz (auto-sensing), 50 / 60 Hz ± 5% ~ 15%					
Generator connection	Available (generator input power is settable)					
OUTPUT						
Output Voltage (AVR/Battery)	220 / 230 / 240 Vac +/-5% (Settable)					
Output frequency	50Hz / 60Hz +/-0.1% (Settable)					
Waveform	Pure sine wave					
Inverter efficiency	Max. 75%	Max. 80%		Max. 85%		
Energy saving mode	Settable (< 3% load), enter in 80 s					
No-load shutdown	Settable (< 3% load), shut down in 80 s					
Transfer time	typical 2-4 ms.					
THDV (resistive load)	≤ 5%					
Protections	Overload, short circuit (inverter), battery low voltage, battery overcharge, overtemperature					
Overload (mains mode)	110% for 120 s, 125% for 60 s, 150% for 10 s (transfer to bypass mode)					
Overload (inverter mode)	110% for 60 s, 125% for 10 s, 150% for 5 s (shut down directly)					
Mute	Automatic mute in 60 s or by manual					
BATTERIES						
Inbuilt battery (standard model)	/	12 V / 7 Ah x 2	12 V / 9 Ah x 2	12 V / 9 Ah x 3	12 V / 9 Ah x 4	
Charging current	Standard model (S): 1 A (default)					
Equalizing charge voltage	Single battery 14.1 Vdc (default), 13.6 ~ 15 Vdc adjustable					
Floating charge voltage	Single battery 13.5 Vdc (default), 13.2 ~ 14.6 Vdc adjustable					
Low voltage alarm point	Single battery 10.8 Vdc (default), 9.6 ~ 13 Vdc adjustable					
Low voltage shutdown point	Single battery 10.2 Vdc (default), 9.6 ~ 11.5 Vdc adjustable					
Battery Type	Seal lead acid maintenance free battery					
Battery Back-up	15-30 Mins. (Depend on loads), 5 Mins at fullload					
OTHERS						
Topology	Line Interactive UPS					
Communications	USB & RJ45 (standard), dry contacts / SNMP (optional)					
Operating temperature	5℃ ~ 40℃					
Operating humidity	Relative humidity ≤ 93%					
Noise level	≤ 50 dB (1 m)					
Rack-mount	Dimensions (W × D × H) (mm)	/	440 × 338 × 88 (S)	440 × 410 × 132 (S)		
	Packaged dimensions (W × D × H) (mm)	/	611 × 448 × 208 (S)	611 × 505 × 235 (S)		
	Net weight (kg)	/	14.6 (S)	17.2 (S)	21.3 (S)	26.7 (S)
	Gross weight (kg)	/	16.8 (S)	20.4 (S)	24.5 (S)	30.5 (S)



1kVA



1.5-3kVA

Read More About This Manual & Download PDF:

Documents / Resources



ZIRCON Pi-Prime Speed Com Black UPS 1000VA 800W [pdf] Owner's Manual
1000VA, 3000VA, Pi-Prime Speed Com Black UPS 1000VA 800W, Pi-Prime, Speed Com Black UPS 1000VA 800W, Black UPS 1000VA 800W, 1000VA 800W

References

- [User Manual](#)

[Manuals+](#), [Privacy Policy](#)

This website is an independent publication and is neither affiliated with nor endorsed by any of the trademark owners. The "Bluetooth®" word mark and logos are registered trademarks owned by Bluetooth SIG, Inc. The "Wi-Fi®" word mark and logos are registered trademarks owned by the Wi-Fi Alliance. Any use of these marks on this website does not imply any affiliation with or endorsement.