

ZIPWAKE Series S Dynamic Trim Control System



# ZIPWAKE Series S Dynamic Trim Control System Installation Guide

[Home](#) » [ZIPWAKE](#) » ZIPWAKE Series S Dynamic Trim Control System Installation Guide 

## Contents

- [1 ZIPWAKE Series S Dynamic Trim Control System](#)
- [2 Specifications](#)
- [3 Product Usage Instructions](#)
- [4 FAQ](#)
- [5 TOOLS](#)
- [6 KIT BOX CONTENTS](#)
- [7 SYSTEM OVERVIEW](#)
- [8 INTERCEPTOR](#)
- [9 INTEGRATOR MODULE](#)
- [10 ACCESSORIES](#)
- [11 WIRING DIAGRAM](#)
- [12 Documents / Resources](#)
  - [12.1 References](#)

# ZIPWAKE

ZIPWAKE Series S Dynamic Trim Control System



## Specifications

- **Power Supply:** 12-32 V DC
- **Cable Length:** Interceptors – 3m, Distribution Unit – 4m, Standard Cable – 7m
- **Interface:** I-BUS, NMEA 2000, Ethernet 10/100

## Product Usage Instructions

### Mounting Options

- Depending on preference, the Interceptors can be mounted with thru-hull cable fittings above the waterline or below, concealed behind the Interceptors.

### Propeller Clearance

- If the boat has an outboard engine or sterndrive, ensure a minimum clearance of 75mm for the Interceptors to the propeller(s).

### Bottom Curvature Requirements

- Ensure a convex bottom curvature of at least 100mm and a concave bottom curvature of at least 3mm for proper installation.

### Prepare the Transom

- Ensure a flat surface for each Interceptor by maintaining a maximum deviation of 2mm between parallel planes on the transom.

### Drilling Template

- Start by using the provided template to mark and drill pilot holes for the Interceptors. Follow the guidelines

based on the boat model (300 S: x6, 450 S: x10, 600 S: x14).












## Install the Back Plates

- If using concealed thru-hull fittings, follow the steps to install back plates with the appropriate sealant based on the boat hull material (GRP or Metal).

## FAQ

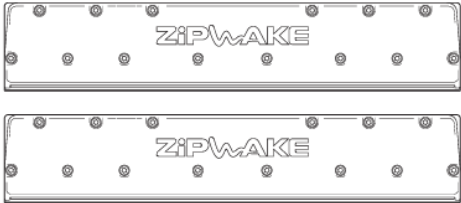
- **Q:** Can the Interceptors be mounted below the waterline?
- **A:** Yes, the Interceptors can be mounted below the waterline with appropriate thru-hull fittings as described in the installation guide.
- **Q:** What is the purpose of the Integrator Module?
- **A:** The Integrator Module facilitates communication between the Interceptors, Distribution Unit, and other control devices for seamless operation.

## TOOLS

	<b>Drill bits</b> Ø 3 mm (1/8") Ø 3.5 mm (9/64") Ø 4 mm (5/32") Ø 5 mm (13/64") 	<b>Hole saw</b> Ø 19 mm (3/4") 	<b>Screw bits</b> T20 T25 T30 
<b>Power drill</b> 	<b>Sealant</b> 	<b>Flat screwdriver</b>  <b>Bits screwdriver</b> 	<b>Wrench</b> 13 mm (33/64") 27 mm (1 1/16") 
	<b>Utility knife</b> 	<b>Hacksaw</b> 	<b>Antifouling</b> 


## KIT BOX CONTENTS

### INTERCEPTOR




2 x Interceptors  
with Cable 3 m & Cable Cover

### DISTRIBUTION UNIT




1 x Distribution Unit  
with Power Cable 4 m

### INTEGRATOR MODULE



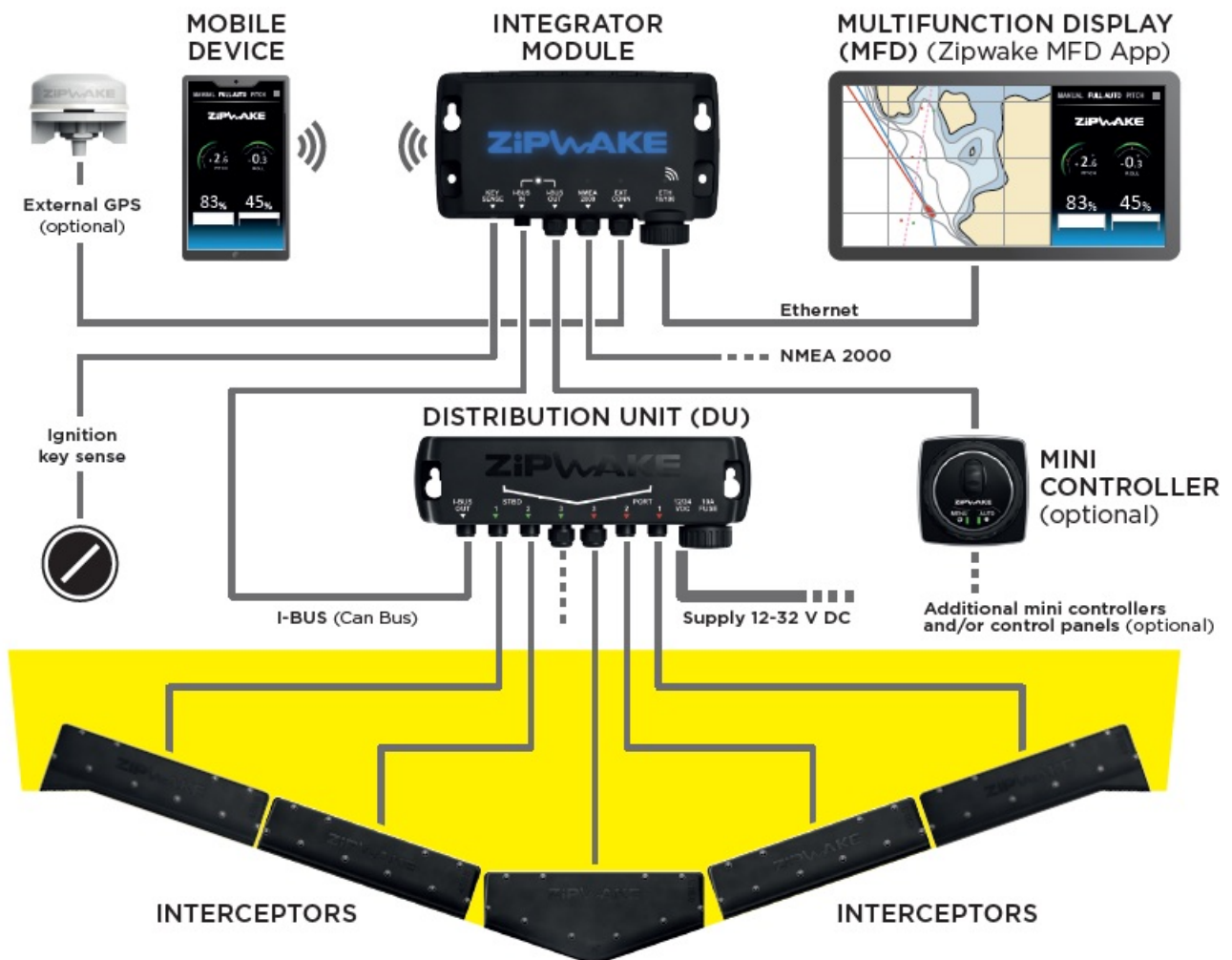
1 x Integrator Module

- + Operator's Manual
- + Warranty Card
- + Installation Guide
- + Drill Templates
- + Mounting Screws
- + Operator's Quick Guide
- + Startup Checklist



1 x Standard Cable 7 m

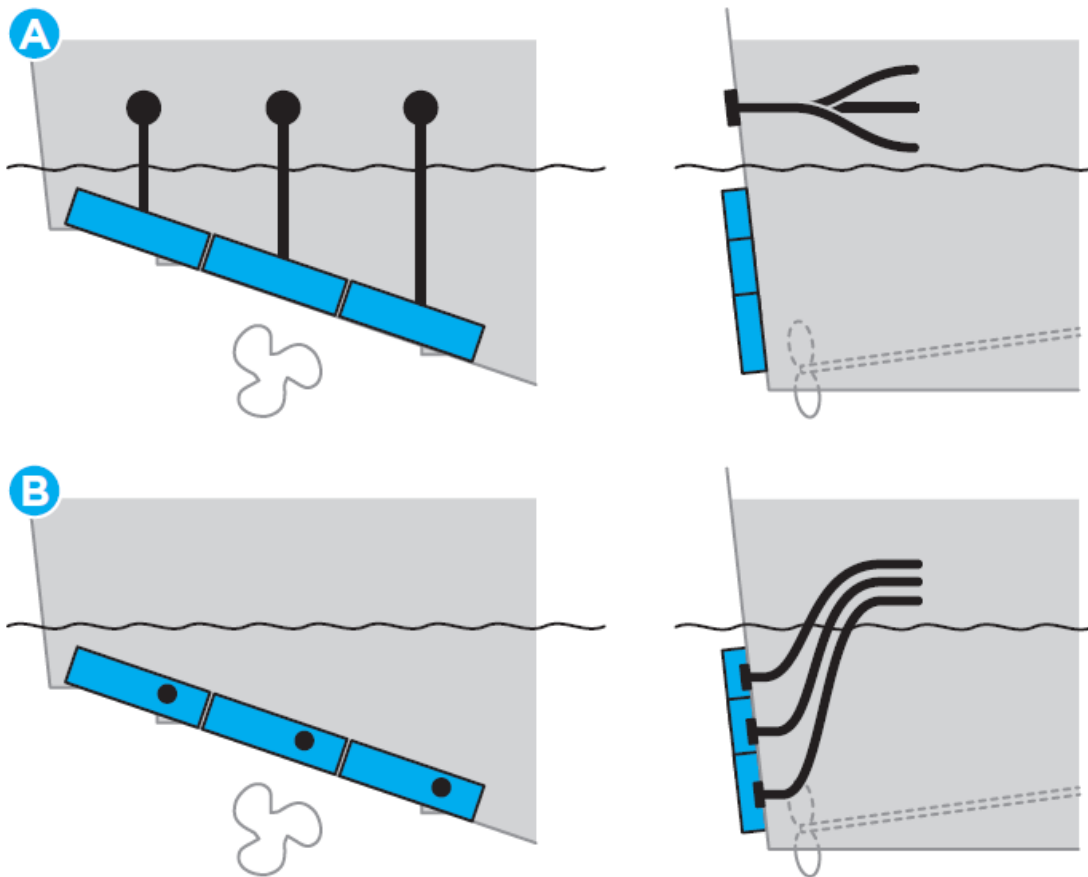
## SYSTEM OVERVIEW



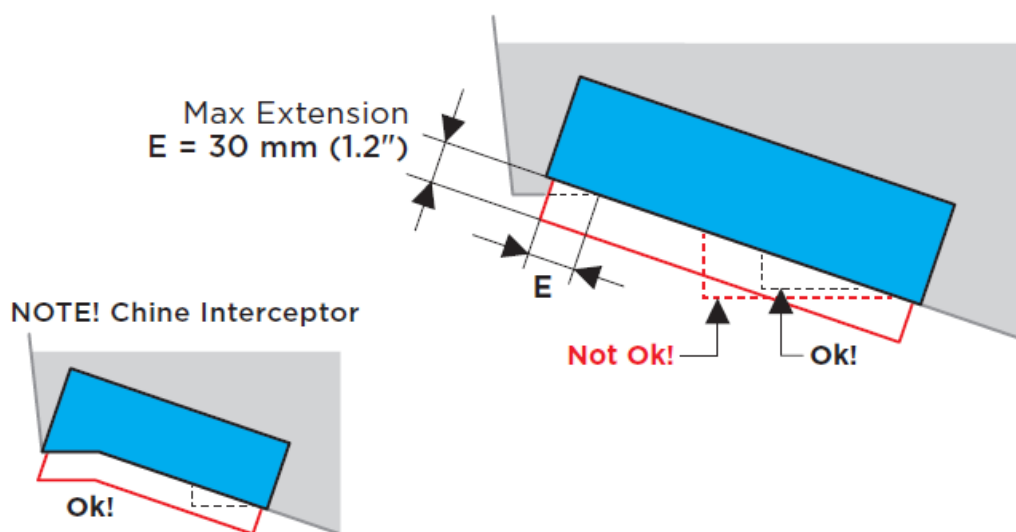
## INTERCEPTOR

### MOUNTING OPTIONS

- **THRU-HULL CABLE FITTINGS** Depending on preference, the Interceptors can be mounted with thru-hull cable fittings above the waterline (A) or below, concealed behind the Interceptors (B).



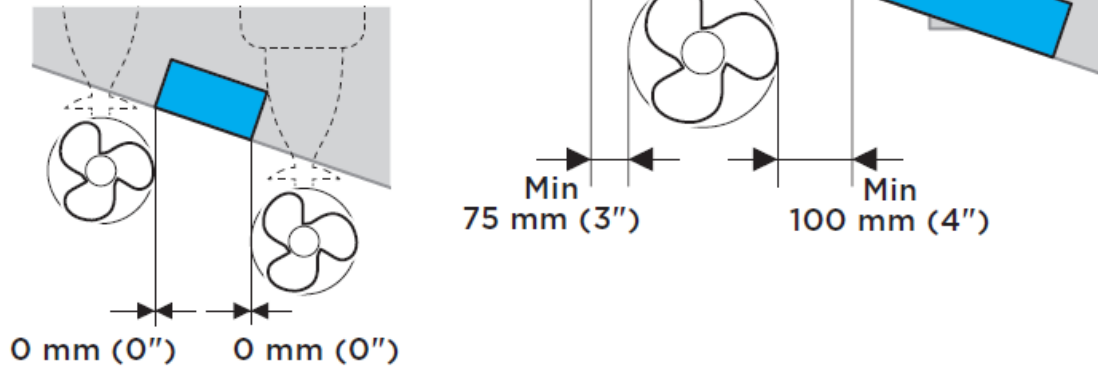
#### ALLOWED SPRAY RAIL OVERLAP



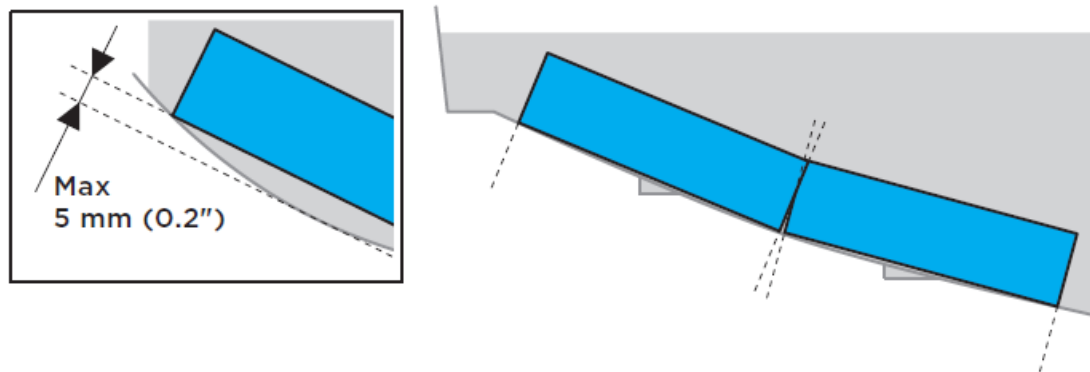
#### PROPELLER CLEARANCE

- If the boat has an outboard engine or sterndrive, the Interceptors must be mounted with clearance to the propeller(s).

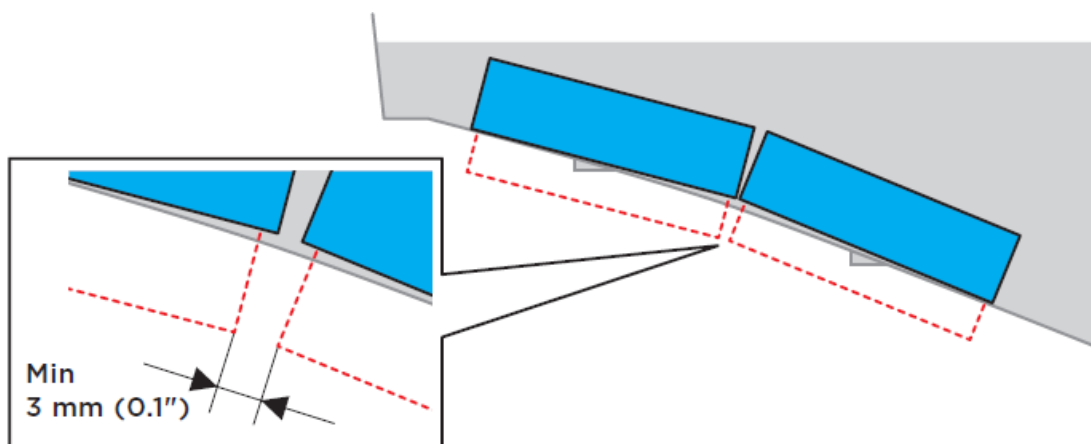
**NOTE! Intermediate Interceptor**



## CONVEX BOTTOM CURVATURE

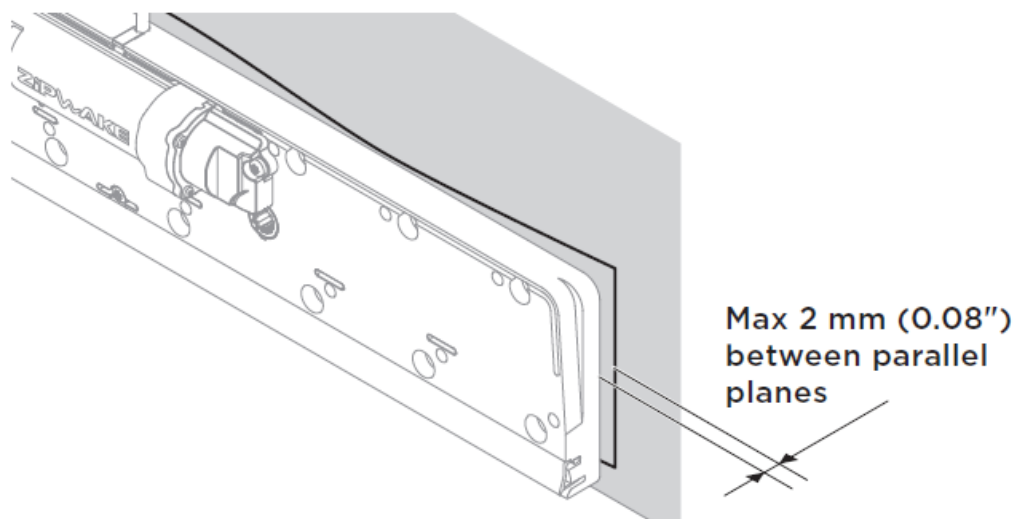


## CONCAVE BOTTOM CURVATURE

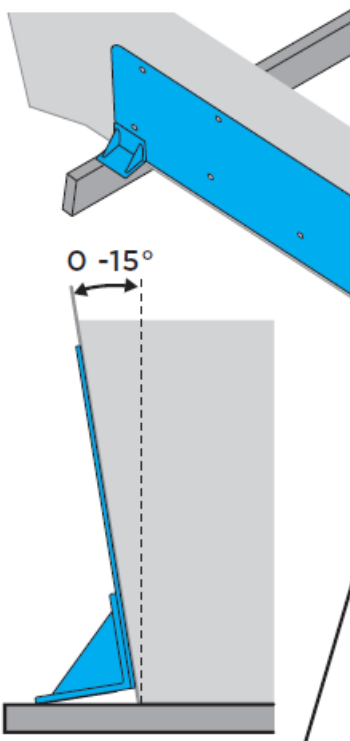


## PREPARE THE TRANSOM

- ENSURE A FLAT SURFACE FOR EACH INTERCEPTOR
- The transom must be relatively flat where the Interceptors are mounted to ensure that they work properly.



## DRILLING TEMPLATE



**Convex bottom:** Place two straightedges under the bottom parallel to the boat's centerline. When placed on the straightedges and pressed against the transom, the template will have the right position.

Fix the template on the transom with tape.

**Concave bottom:** Place one straightedge at the interceptor center and use one end of the template to find its right center position.

1. Drill pilot holes  
2. Remove the template  
3. Drill holes

**Drill holes for the Interceptors**

	300 S: x6
	450 S: x10
	600 S: x14
	750 S: x18

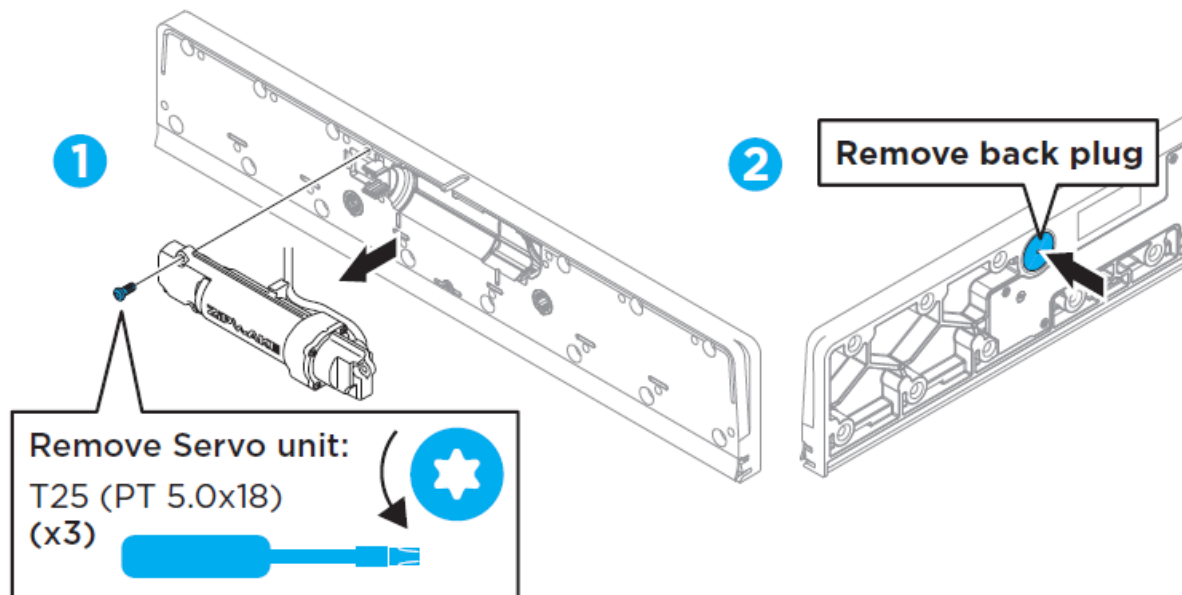
1. Pilot hole	Ø 3 mm (1/8")	
2. Drill	Ø 5 mm (13/64")	

**Only if a concealed thru-hull fitting will be used**

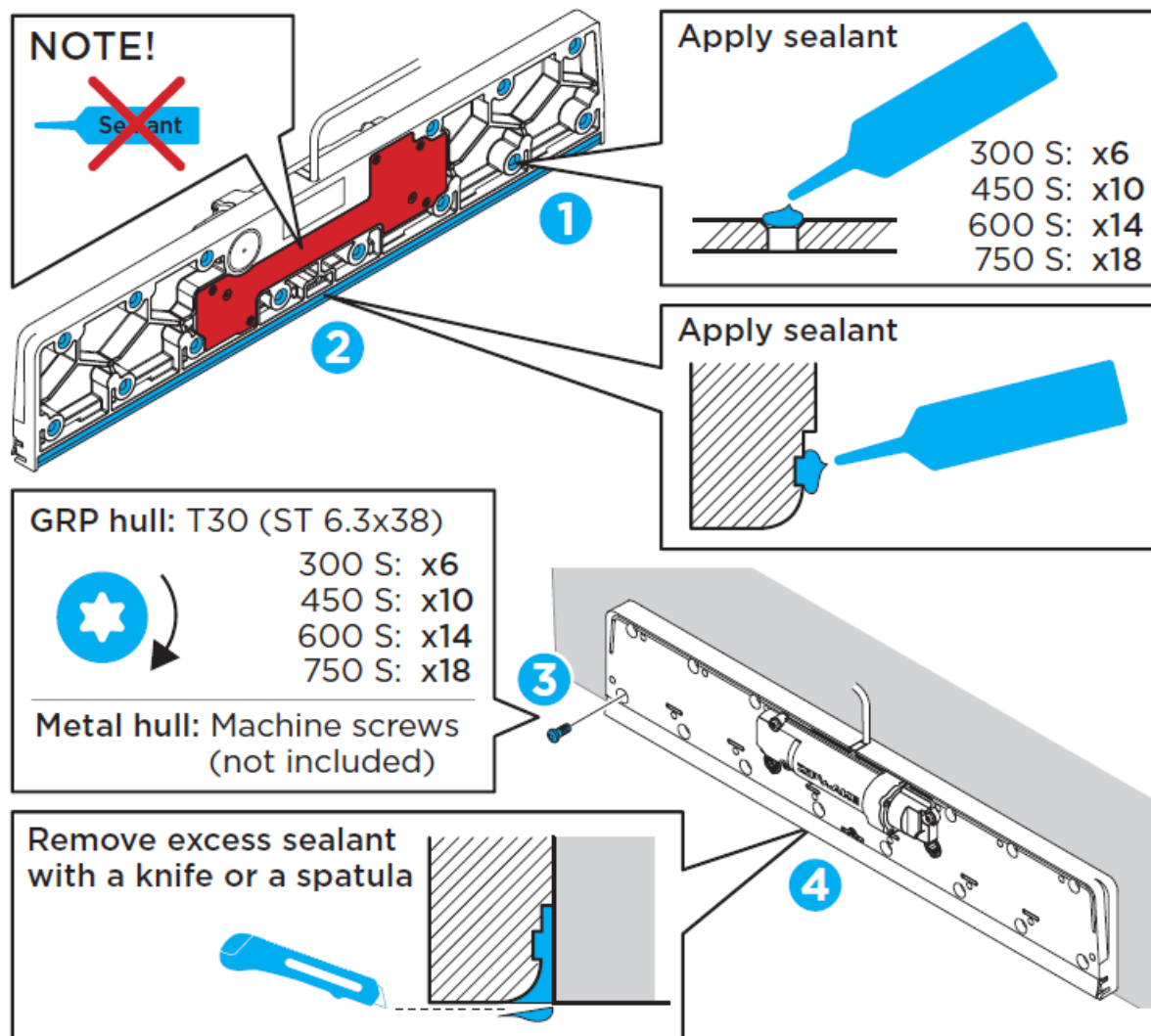
<p><b>Option 1:</b></p> <p>1. Pilot hole Ø 3 mm (1/8")</p> <p>2. Hole saw Ø 19 mm (3/4")</p>	<p><b>Option 2 (M18 x 2.5):</b></p> <p>1. Pilot hole Ø 3 mm (1/8")</p> <p>2. Hole saw Ø 16 mm (5/8")</p> <p>3. Tap M18 x 2.5</p>
--	--

## INSTALL THE BACK PLATES

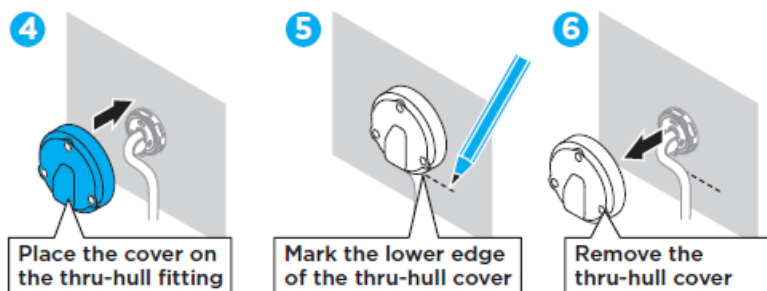
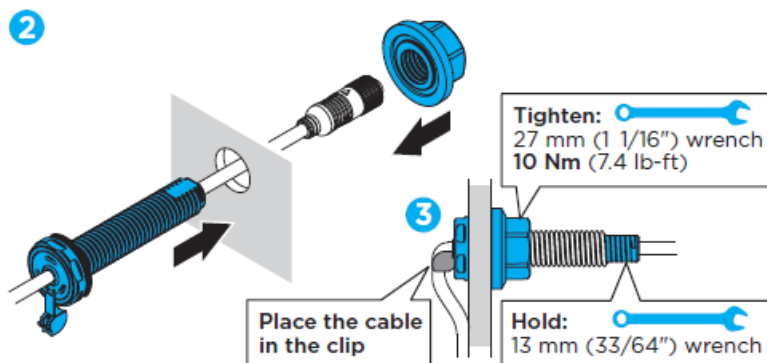
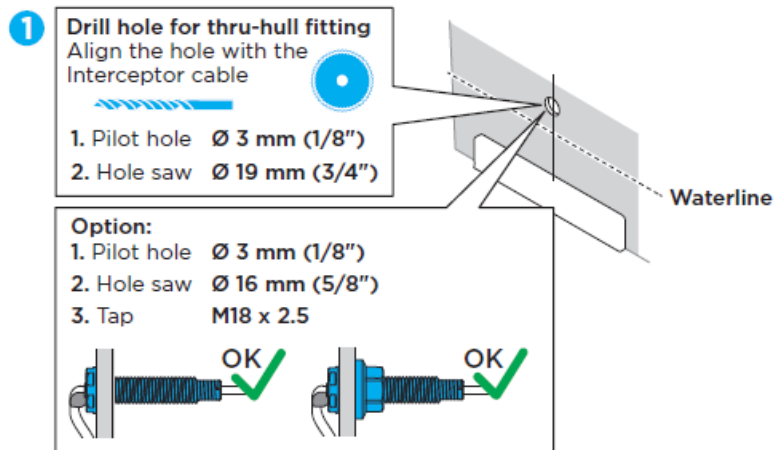
- **A. FOR THRU-HULL FITTINGS ABOVE THE WATERLINE GO STRAIGHT TO STEP B.**

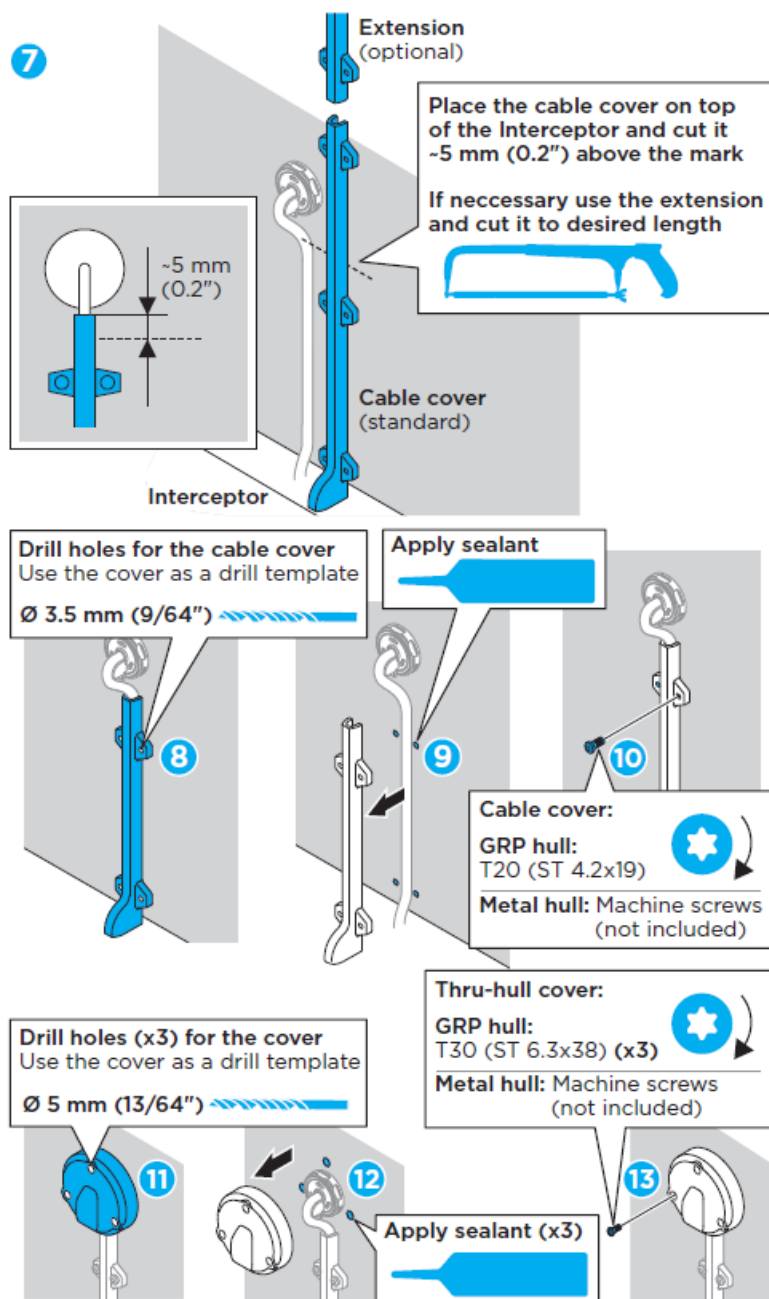


• **B. MOUNT THE BACK PLATE**

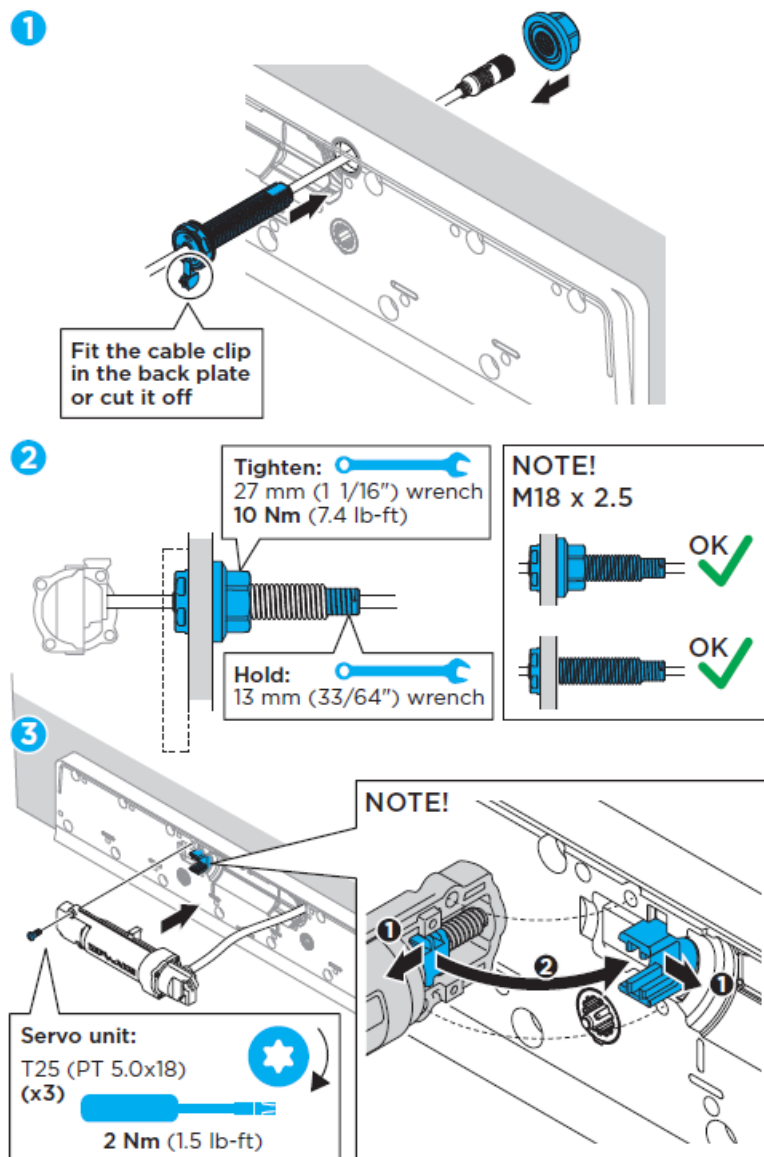


**A INSTALL THRU-HULL FITTINGS ABOVE THE WATERLINE**

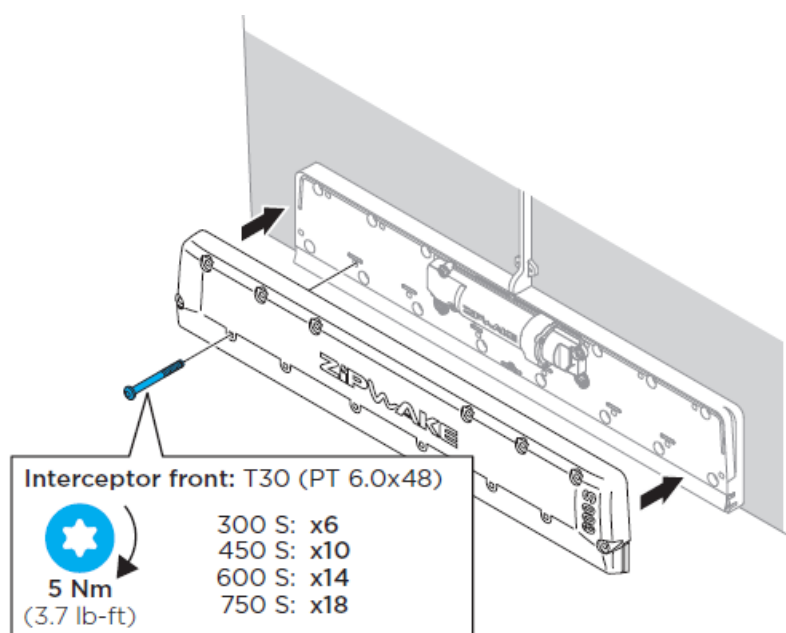




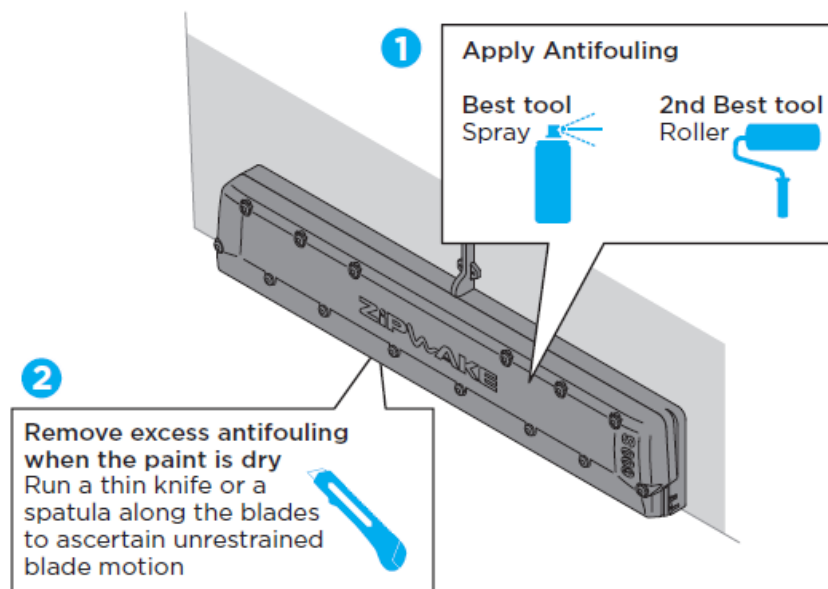
## B INSTALL CONCEALED THRU-HULL FITTINGS UNDER THE WATERLINE



## INSTALL THE INTERCEPTOR FRONTS



## PAINT THE INTERCEPTORS WITH ANTIFOULING

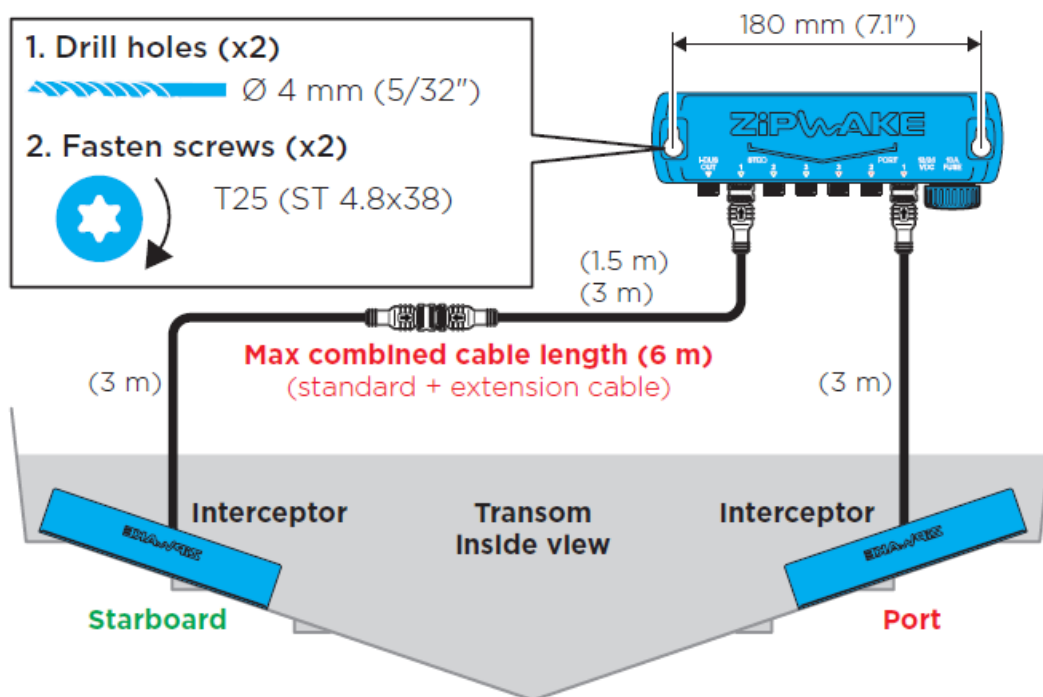


## MOUNT THE DISTRIBUTION UNIT

Mount the distribution unit inboard where it is easy to connect it to both interceptors and power supply (battery) e.g. the engine room or other suitable compartment.

### NOTE!

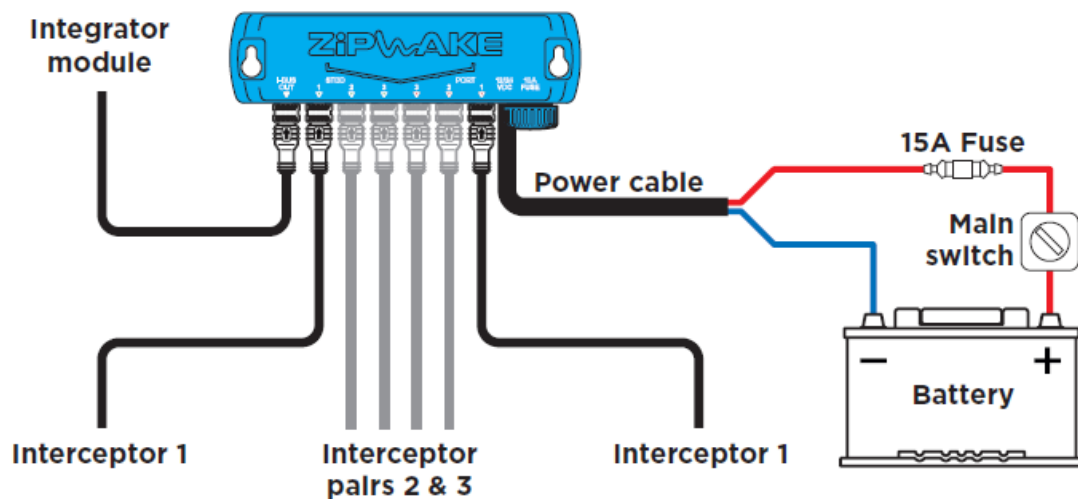
The maximum cable length (including extra cable) from an interceptor to the distribution unit is 6 m (20 ft).



## CONNECT THE DISTRIBUTION UNIT

### NOTE!

A detailed wiring diagram is available at the end of this folder.



**NOTE!** The system allows an unpaired Interceptor mounted on the centre of the transom. A centerline-mounted Interceptor should always be connected to port side 3 to work properly.

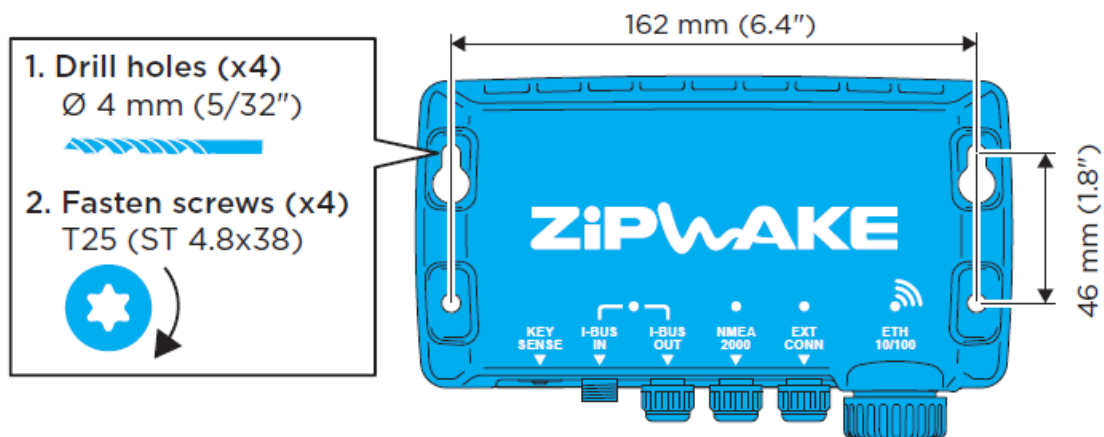
## INTEGRATOR MODULE

### MOUNT THE INTEGRATOR MODULE

Mount the integrator module on a rigid surface where it is easy to connect it to the distribution unit and other equipment e.g. under the dash or another suitable compartment. If the system will be used with mobile devices, mount the integrator module for maximum signal strength.

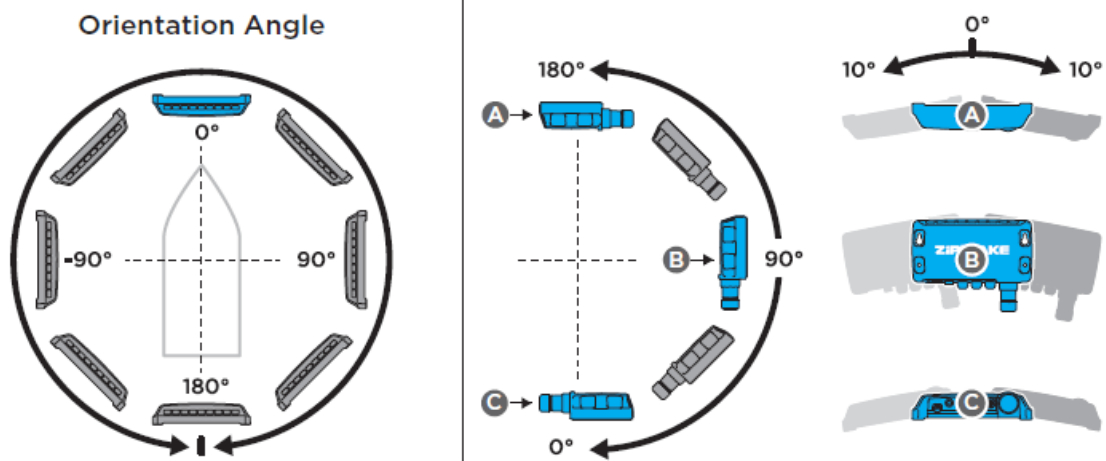
#### **NOTE!**

0.5 m (1.6 ft) safe distance to magnetic compass.



### MOUNTING RESTRICTIONS

Mount the integrator module within the angles shown below.

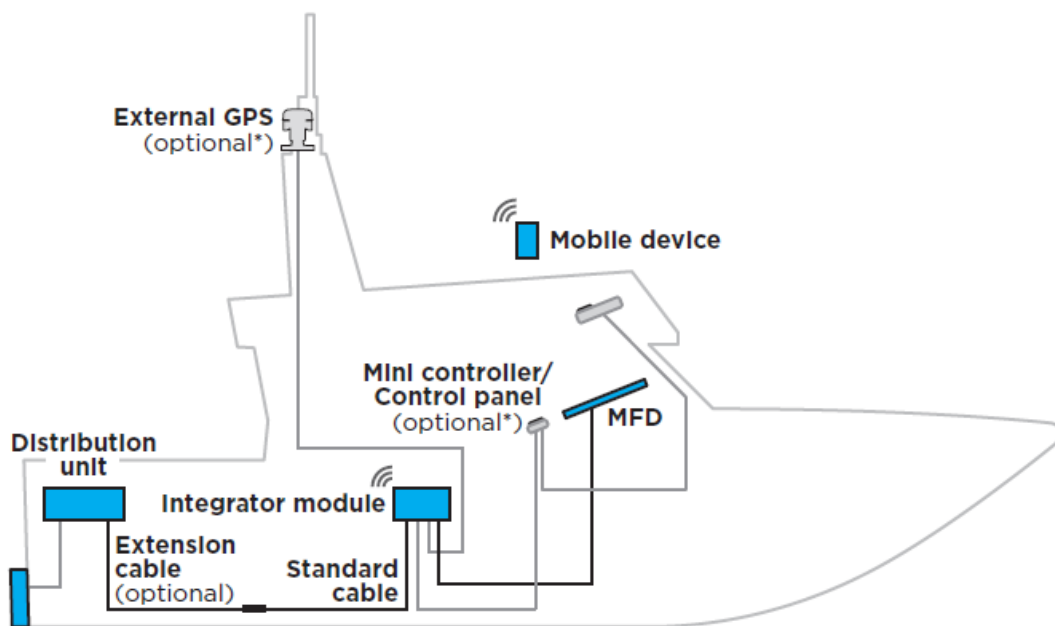


#### NOTE!

Make sure the integrator module orientation angle (mounting angle relative to the boat's forward direction) is set as accurately as possible during initial start-up.

#### CONNECT THE INTEGRATOR MODULE

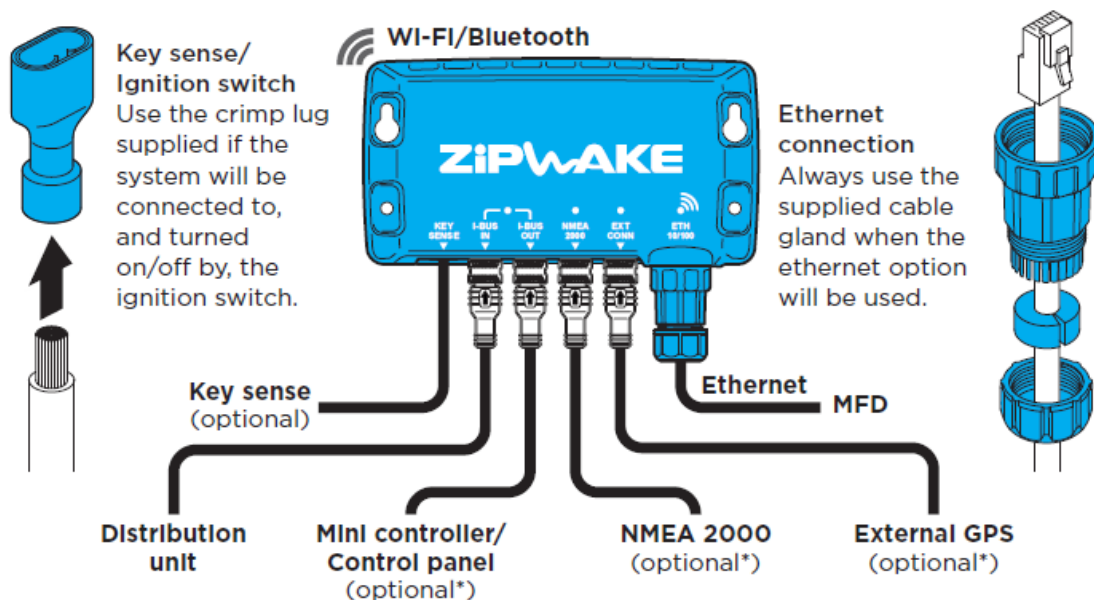
Route the cables between the integrator module, the distribution unit and the optional multifunction display (MFD) and/or other equipment. Use optional extension cables if necessary.



With the integrator module connected, the system can be controlled from one or several devices e.g. an MFD, a mobile device, a Zipwake mini controller or a Zipwake control panel.

#### NOTE!

A detailed wiring diagram is available at the end of this folder.



## INITIAL START

Refer to the Operator's Manual for detailed information about setting up and operating the system.

## SETTING UP THE SYSTEM

### MULTIFUNCTION DISPLAY (MFD)

The Zipwake application automatically appears on a connected (compatible) MFD. Refer to the MFD manufacturer or manual for detailed information on compatible models and how to launch integration applications such as the Zipwake Integrator Module interface on your MFD model. At first start-up, follow the steps on the MFD to complete the system installation.

### MOBILE DEVICE

Scan the QR code on the integrator module label to connect to the Wi-Fi network (also available from the System Information page when the Zipwake application is installed). Scan the QR code from the integrator module label to launch the Zipwake application (APP) and add it to the device start screen for future use.

### NOTE!

Make sure the integrator module orientation angle (mounting angle relative to the boat's forward direction) is set as accurately as possible within  $\pm 5^\circ$ .

If the orientation angle is difficult to measure or estimate, use a compass or a mobile device compass application to determine the angle.

### INTERCEPTOR CHECK

Carry out an Interceptor Check to verify function immediately after installation and before launching the boat. Repeat this before every launch.

#### All readings must be green!

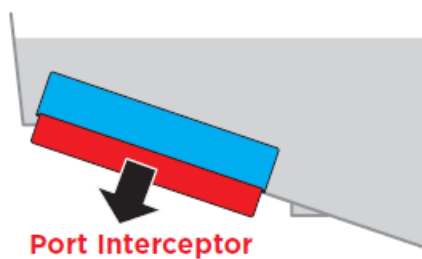
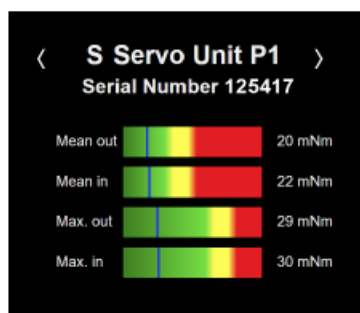
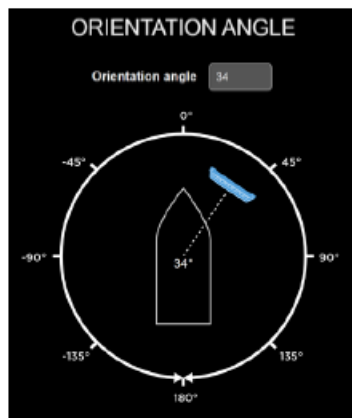
Corrective actions are always necessary when excessive torque levels are observed. Verify the flatness of the transom, excess use of sealant behind the interceptor and/or excess antifouling between the blades and adjust if needed.

## VERIFY FUNCTION ON SHORE

1. Turn the Roll wheel clockwise
2. Port side Interceptor(s) should move out
3. Repeat counter-clockwise for starboard

## IMPORTANT

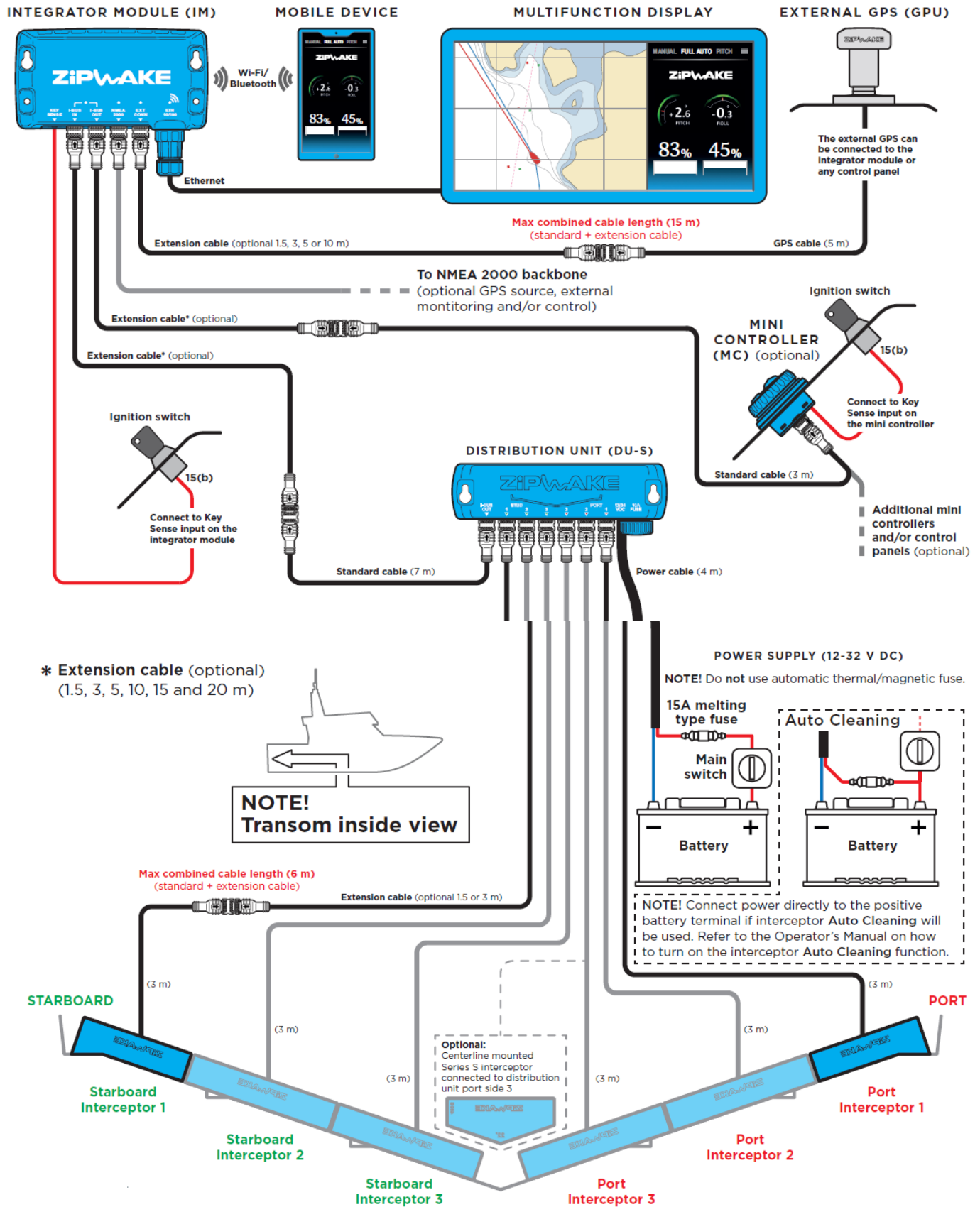
Always use the controls to move the Interceptor blades. Never try to force the Interceptor blades by hand.



## ACCESSORIES

Model	Part No.	Description
MC	2012401	MINI CONTROLLER WITH STANDARD CABLE 3 M
CP-S	2011238	CONTROL PANEL S WITH STANDARD CABLE 7 M
DU-S	2011239	DISTRIBUTION UNIT S WITH POWER CABLE 4 M
IT300-S	2011232	INTERCEPTOR 300 S WITH CABLE 3 M & CABLE COVERS
IT450-S	2011233	INTERCEPTOR 450 S WITH CABLE 3 M & CABLE COVERS
IT600-S	2011234	INTERCEPTOR 600 S WITH CABLE 3 M & CABLE COVERS
IT750-S	2011235	INTERCEPTOR 750 S WITH CABLE 3 M & CABLE COVERS
IT450-S V13	2011482	INTERCEPTOR 450 S V13 WITH CABLE 3 M & CABLE COVERS
IT450-S V16	2011483	INTERCEPTOR 450 S V16 WITH CABLE 3 M & CABLE COVERS
IT450-S V19	2011484	INTERCEPTOR 450 S V19 WITH CABLE 3 M & CABLE COVERS
IT450-S V22	2011485	INTERCEPTOR 450 S V22 WITH CABLE 3 M & CABLE COVERS
IT300-S CHINE PORT	2011702	INTERCEPTOR 300 S CHINE PORT SIDE WITH CABLE 3 M & CABLE COVERS
IT300-S CHINE STBD	2011703	INTERCEPTOR 300 S CHINE STARBOARD SIDE WITH CABLE 3 M & CABLE COVERS
IT450-S CHINE PORT	2011704	INTERCEPTOR 450 S CHINE PORT SIDE WITH CABLE 3 M & CABLE COVERS
IT450-S CHINE STBD	2011705	INTERCEPTOR 450 S CHINE STARBOARD SIDE WITH CABLE 3 M & CABLE COVERS
IT300-S INTER	2011701	INTERCEPTOR 300 S INTERMEDIATE WITH CABLE 3 M & CABLE COVERS
CP ALU FRAME	2011281	CONTROL PANEL ALU FRAME
CP COVER	2011381- 2011385	CONTROL PANEL COVER WHITE, LIGHT GRAY, MID GRAY, DARK GRAY, BLACK
GPU	2011240	GLOBAL POSITIONING UNIT WITH CABLE 5 M & MOUNT KIT
GB	2011622	GIMBAL BRACKET FOR CONTROL PANEL
CC-S	2011071	CABLE COVER S KIT
EC1.5-M12	2011258	M12 EXTENSION CABLE 1.5 M
EC3-M12	2011259	M12 EXTENSION CABLE 3 M
EC5-M12	2011260	M12 EXTENSION CABLE 5 M
EC10-M12	2011261	M12 EXTENSION CABLE 10 M
EC15-M12	2011260	M12 EXTENSION CABLE 15 M

## WIRING DIAGRAM



- ## Documents / Resources

## References

- This website is an independent publication and is neither affiliated with nor endorsed by any of the trademark owners. The "Bluetooth®" word mark and logos are registered trademarks owned by Bluetooth SIG, Inc. The "Wi-Fi®" word mark and logos are registered trademarks owned by the Wi-Fi Alliance. Any use of these marks on this website does not imply any affiliation with or endorsement.