



# ZIPWAKE S Series Dynamic Trim Control System User Guide

[Home](#) » [ZIPWAKE](#) » ZIPWAKE S Series Dynamic Trim Control System User Guide 

## ZIPWAKE S Series Dynamic Trim Control System User Guide



### Contents

- 1 TOOLS
- 2 THE KIT BOX CONTAINS
- 3 SYSTEM OVERVIEW
- 4 INTERCEPTOR
- 5 PREPARE THE TRANSOM
- 6 INSTALL THE BACK PLATES
- 7 INSTALL THRU-HULL FITTINGS ABOVE THE WATERLINE
- 8 INSTALL THE INTERCEPTOR FRONTS
- 9 PAINT THE INTERCEPTORS WITH ANTIFOULING
- 10 DISTRIBUTION UNIT
- 11 CONTROL PANEL
- 12 INITIAL START
- 13 WIRING DIAGRAM
- 14 Documents / Resources
  - 14.1 References
- 15 Related Posts

## TOOLS

- Power drill



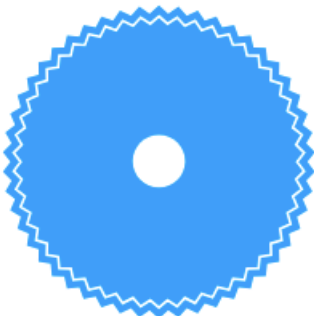
- Drill bits

- Ø 2.5 mm (3/32")
- Ø 3 mm (1/8")
- Ø 3.5 mm (9/64")
- Ø 4 mm (5/32")
- Ø 5 mm (13/64")



- Hole saw

- Ø 19 mm (3/4")
- Ø 76 mm (3")



- Screw bits

- T10

- T20
- T25
- T30



- Sealant



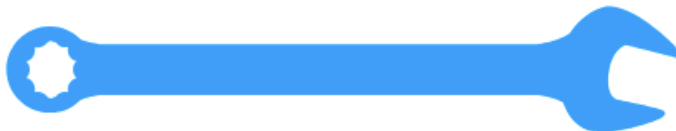
- Flat screwdriver



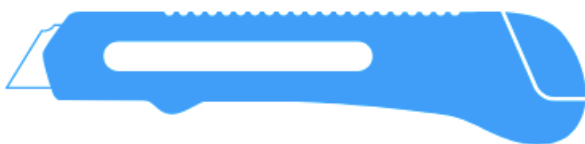
- Bits screwdriver



- Utility knife



- Hacksaw

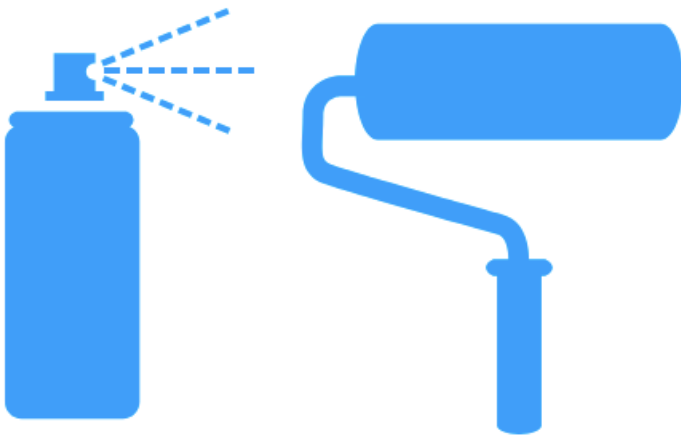


- Wrench

- 13 mm (33/64")
- 27 mm (1 1/16")



- Antifouling



## THE KIT BOX CONTAINS

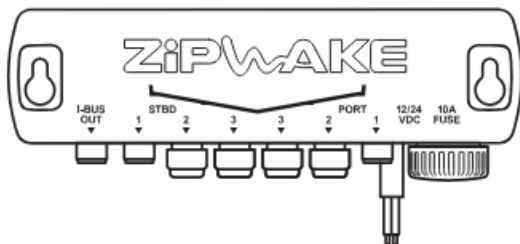
### INTERCEPTOR

**2 x Interceptors**  
with Cable 3 m & Cable Cover



### DISTRIBUTION UNIT

**1 x Distribution Unit**  
with Power Cable 4 m



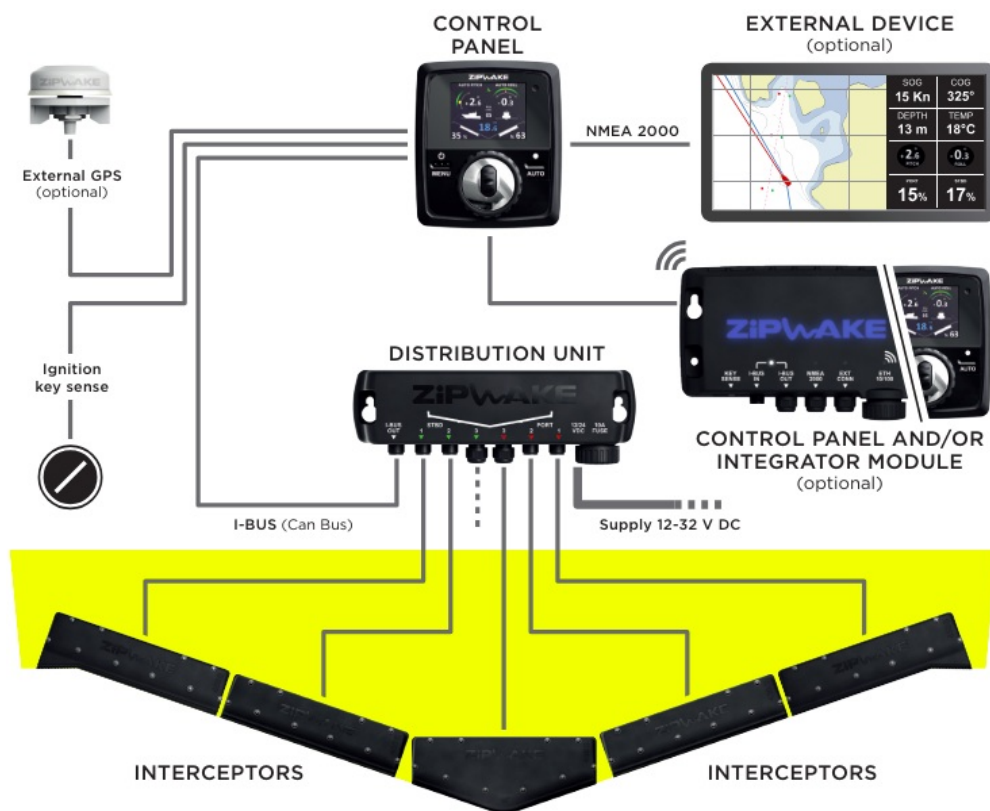
### INTEGRATOR MODULE

**1 x Control Panel**  
with Standard Cable 7 m



- Operator's Manual
- Warranty Card
- Installation Guide
- Drill Templates
- Mounting Screws
- Operator's Quick Guide
- Startup Checklist

## SYSTEM OVERVIEW

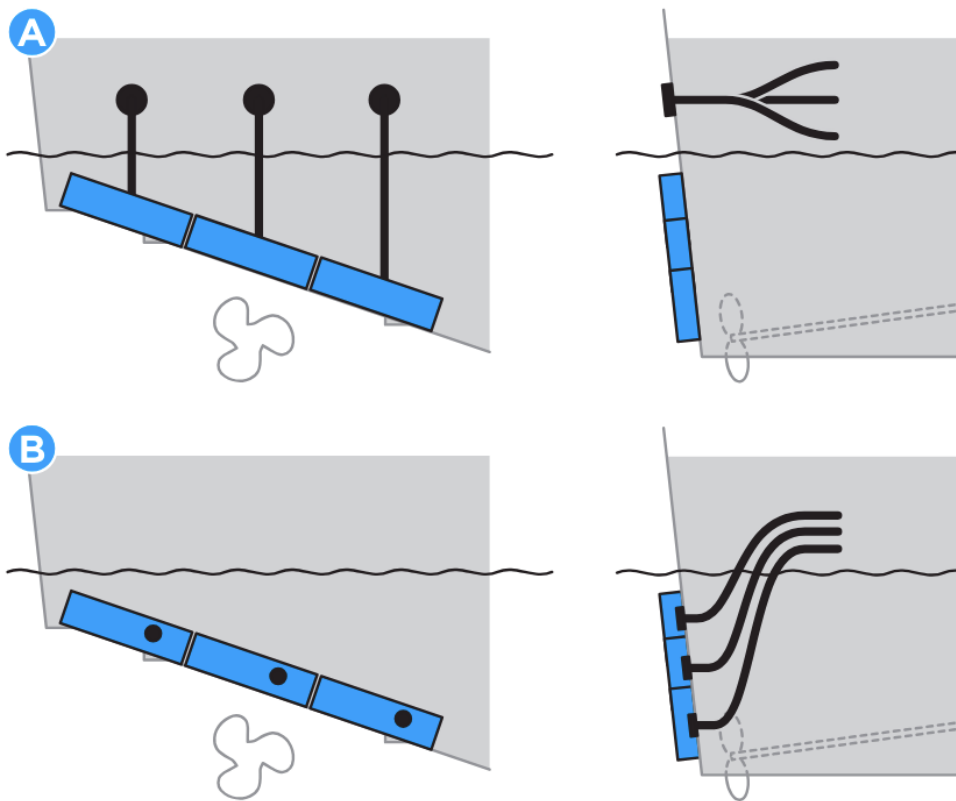


## INTERCEPTOR

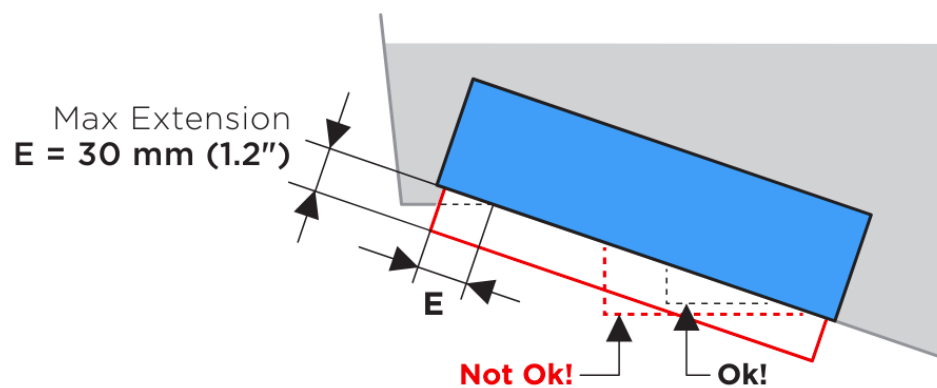
## MOUNTING OPTIONS

### THRU-HULL CABLE FITTINGS

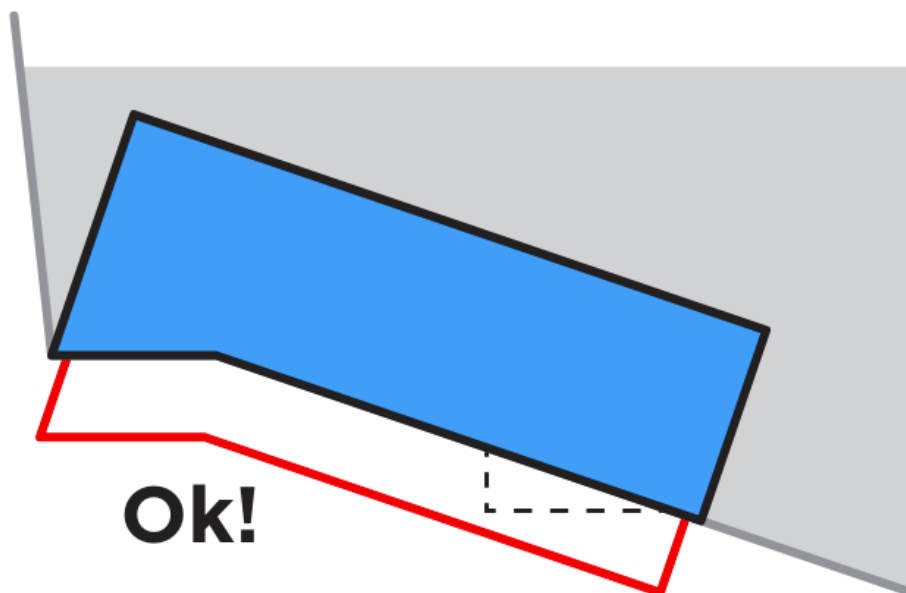
Depending on preference, the Interceptors can be mounted with thru-hull cable fittings above the waterline (A) or below, concealed behind the Interceptors (B).



#### ALLOWED SPRAY RAIL OVERLAP

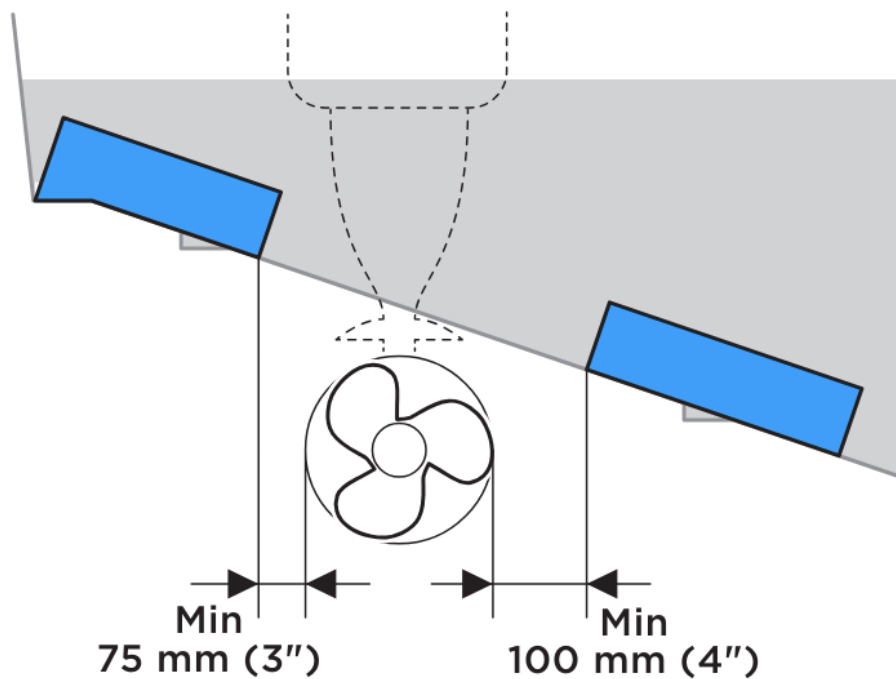


**NOTE!** Chine Interceptor

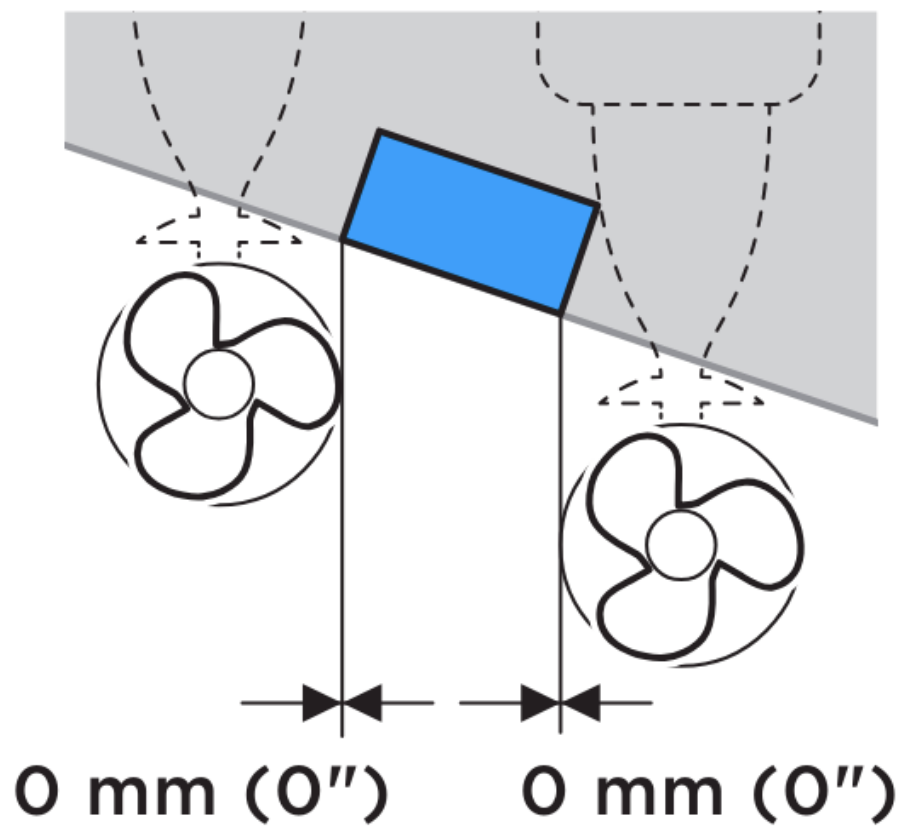


## PROPELLER CLEARANCE

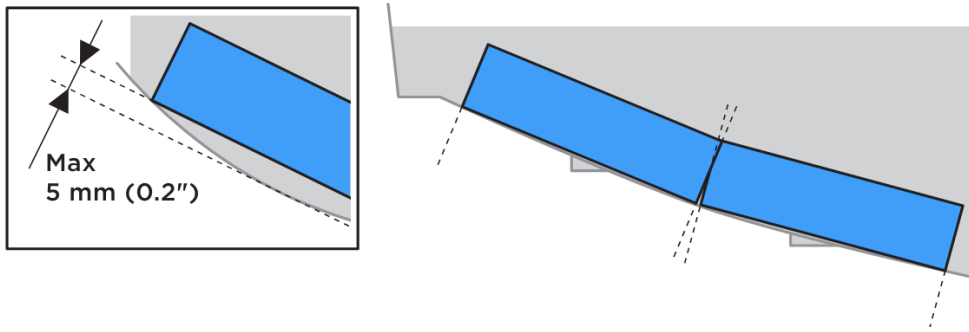
If the boat has an outboard engine or sterndrive, the Interceptors must be mounted with clearance to the propeller(s).



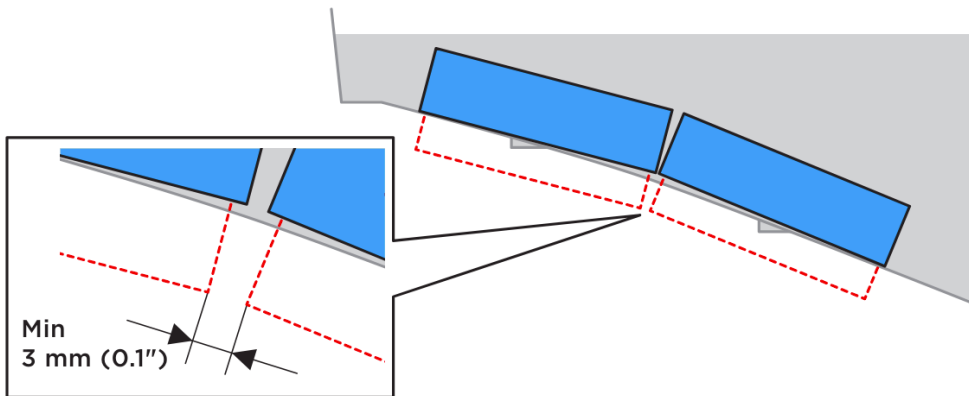
**NOTE!** Intermediate Interceptor



**CONVEX BOTTOM CURVATURE**



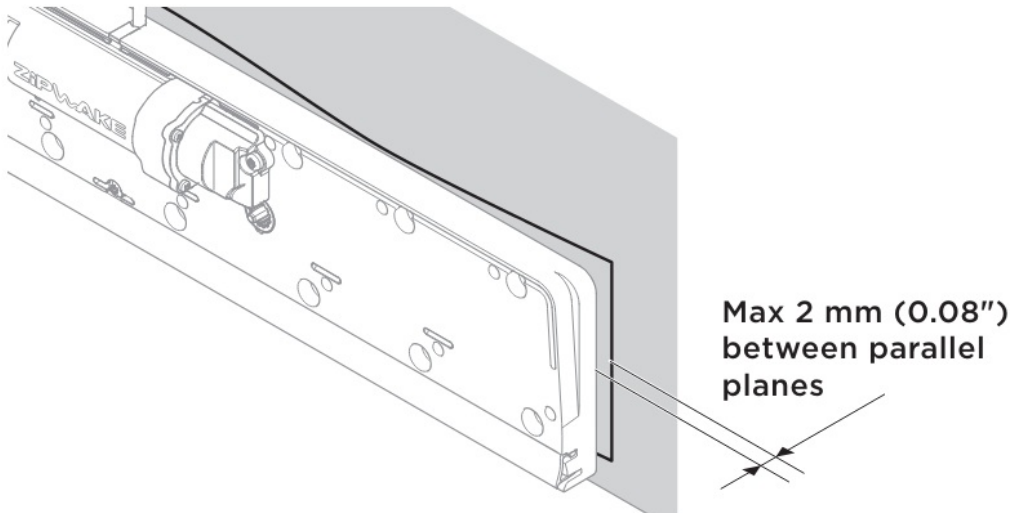
## CONCAVE BOTTOM CURVATURE



## PREPARE THE TRANSOM

### ENSURE A FLAT SURFACE FOR EACH INTERCEPTOR

The transom must be relatively flat where the Interceptors are mounted to ensure that they work properly.



## DRILLING TEMPLATE

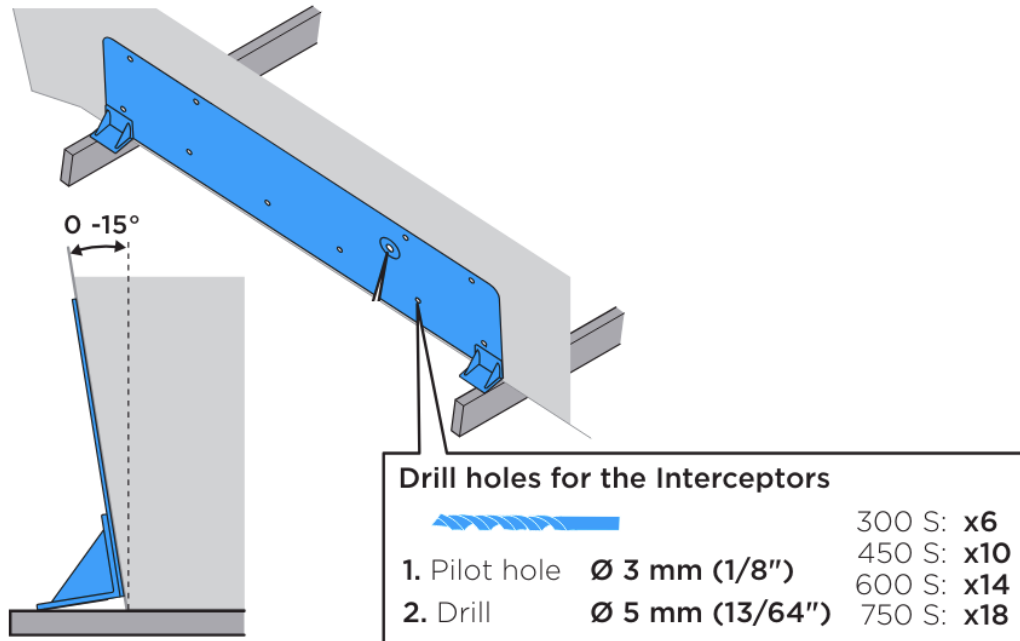
Start mounting the Interceptors as far outward as possible, although well inside the transom. Continue inwards when installing multiple Interceptors.

**Convex bottom:** Place two straightedges under the bottom parallel to the boat's centerline. When placed on the straightedges and pressed against the transom, the template will have the right position. Fix the template on the transom with tape.



**Convex bottom:** Place one straightedge at the interceptor center and use one end of the template to find its right center position.

1. Drill pilot holes
2. Remove the template
3. Drill holes



**Only if a concealed thru-hull fitting will be used**

**Option 1:**

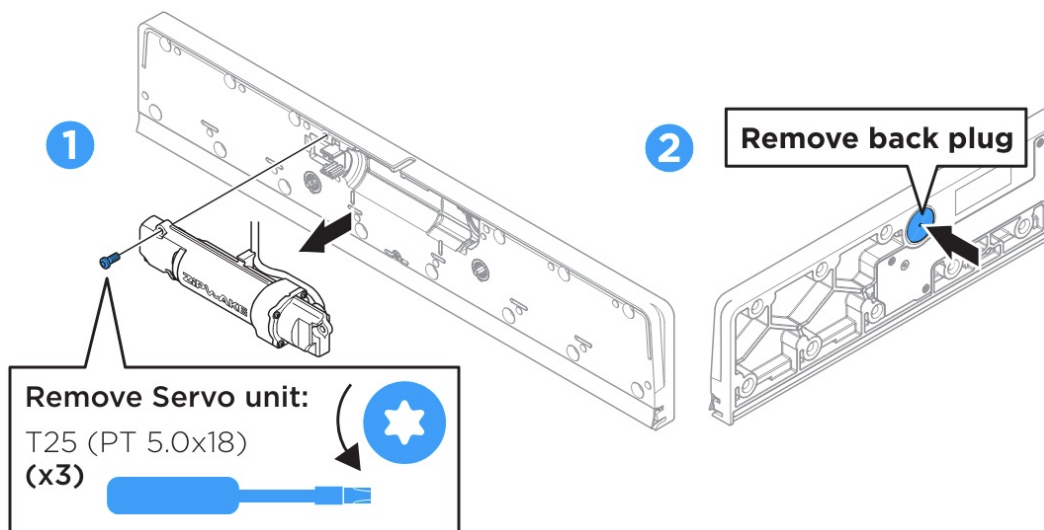
1. **Pilot hole:** Ø 3 mm (1/8")
2. **Hole saw:** Ø 19 mm (3/4")

**Option 2 (M18 x 2.5)**

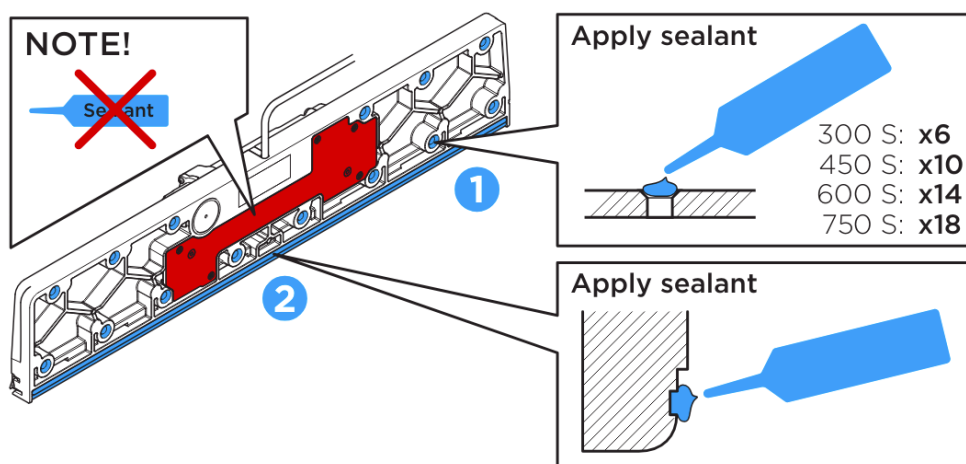
1. **Pilot hole:** Ø 3 mm (1/8")
2. **Hole saw:** Ø 16 mm (5/8")
3. **Tap:** M18 x 2.5

## **INSTALL THE BACK PLATES**

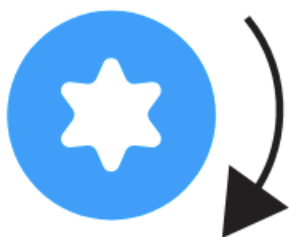
**A. FOR THRU-HULL FITTINGS ABOVE THE WATERLINE GO STRAIGHT TO STEP B.**



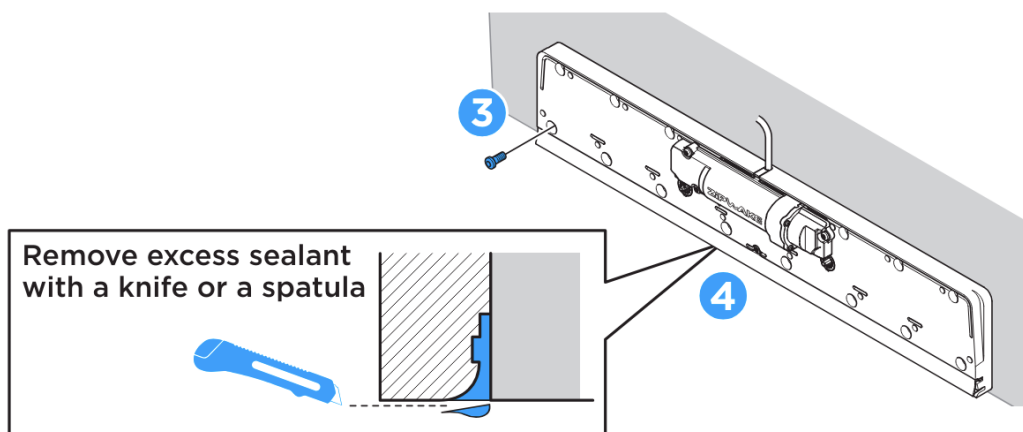
## B. MOUNT THE BACK PLATE



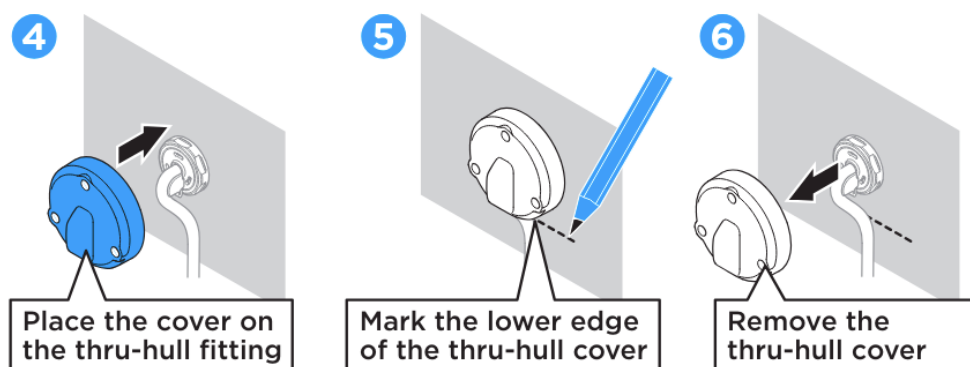
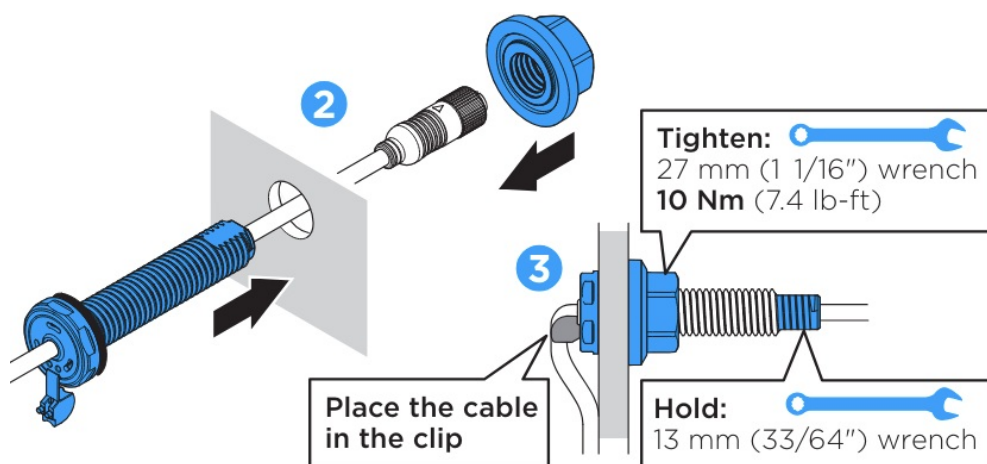
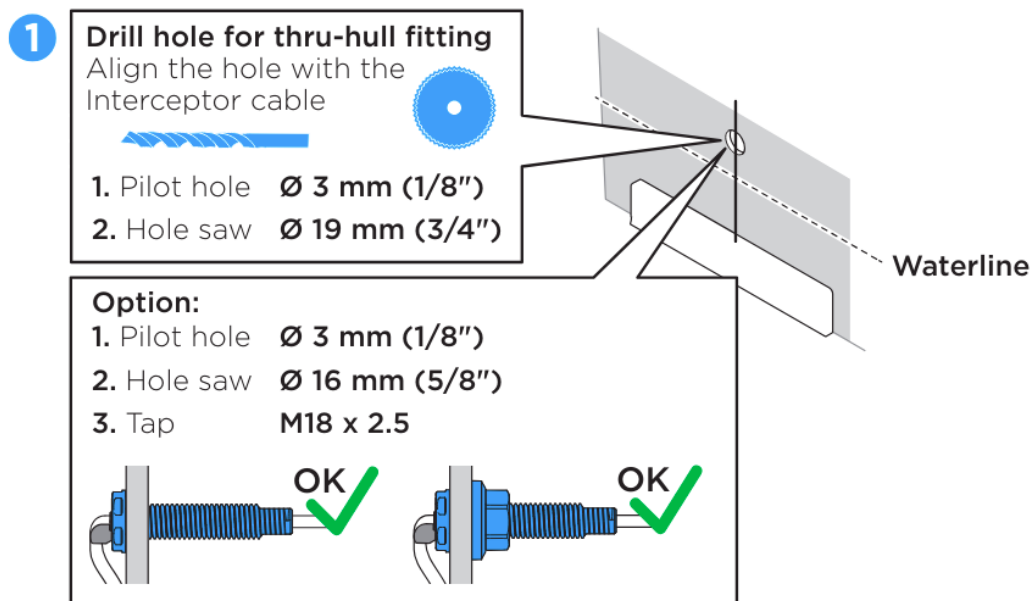
**GRP hull: T30 (ST 6.3x38)**

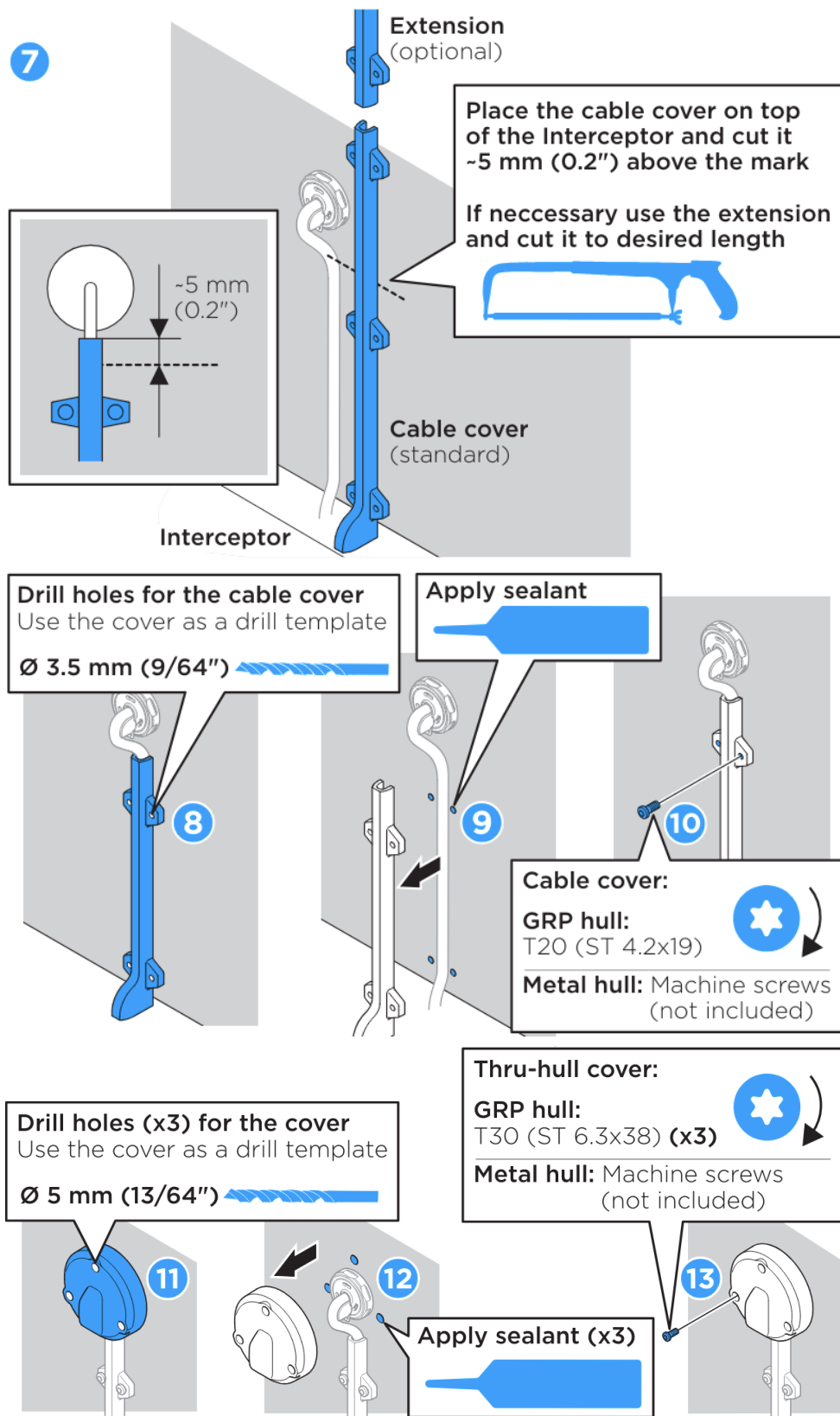


- **300 S:** x6
- **450 S:** x10
- **600 S:** x14
- **750 S:** x18

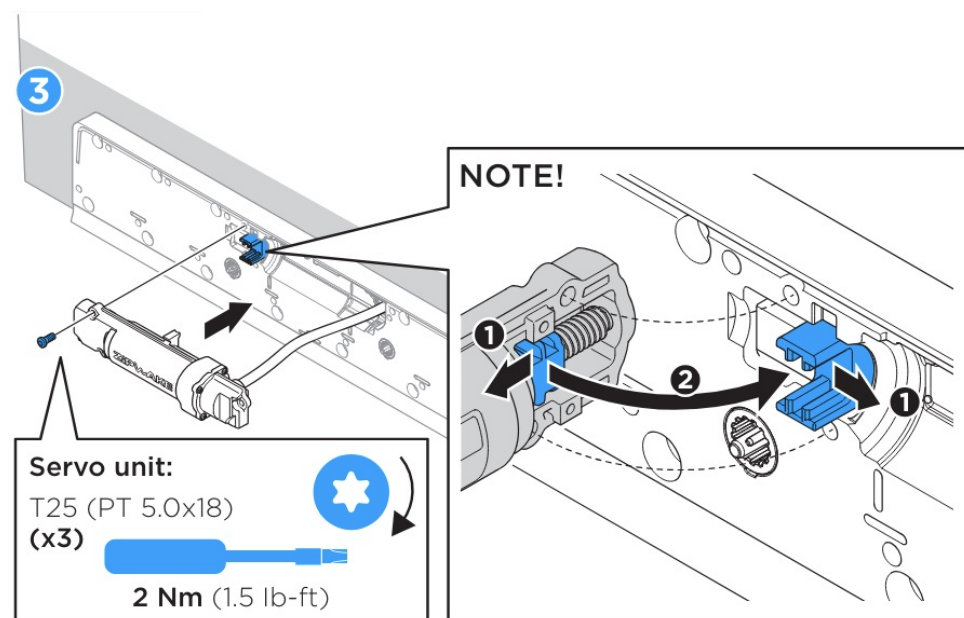
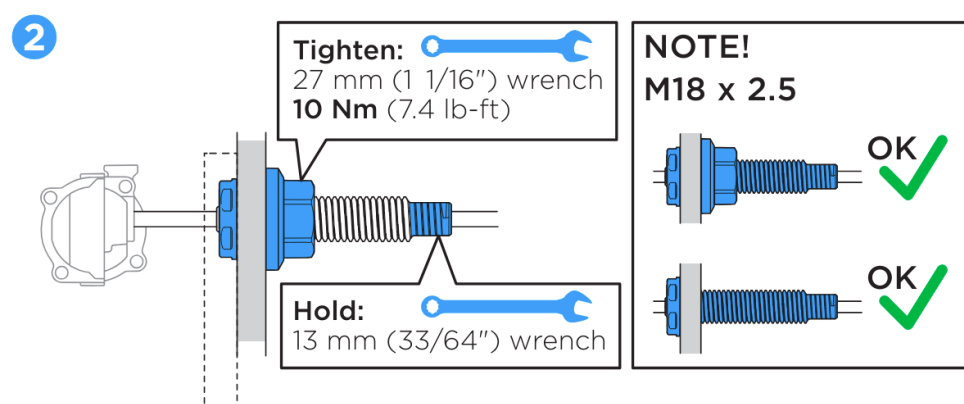
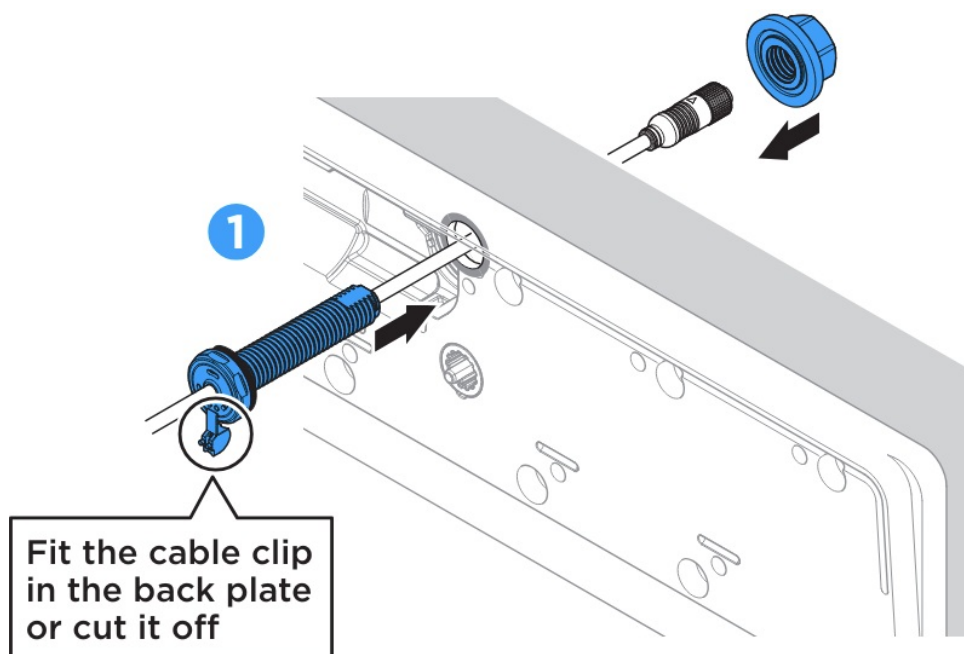


## INSTALL THRU-HULL FITTINGS ABOVE THE WATERLINE

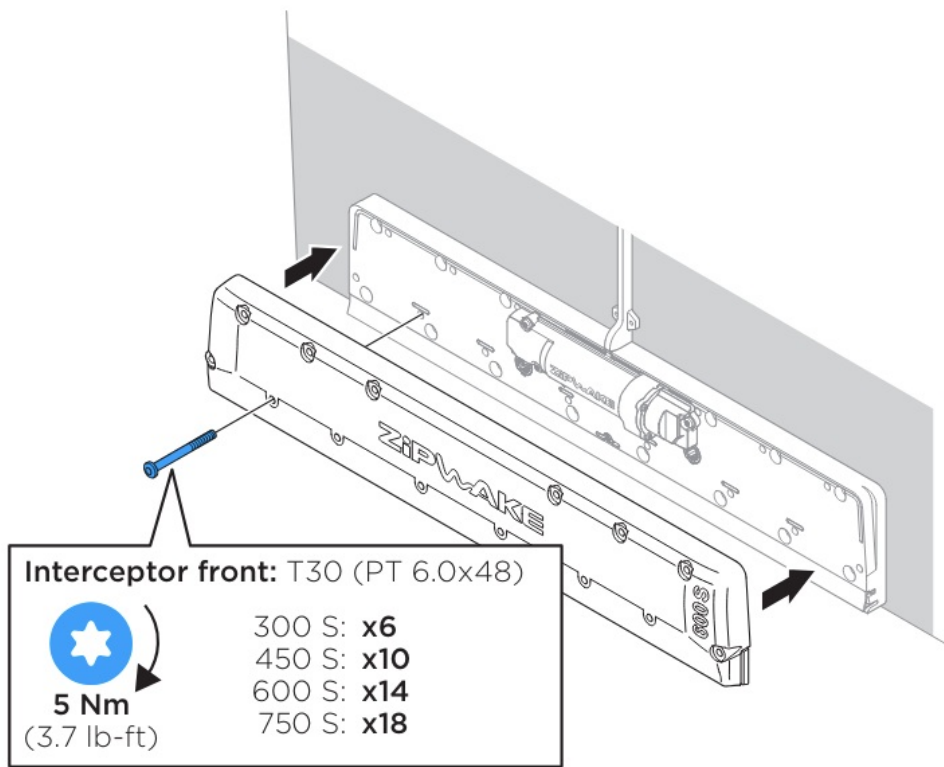




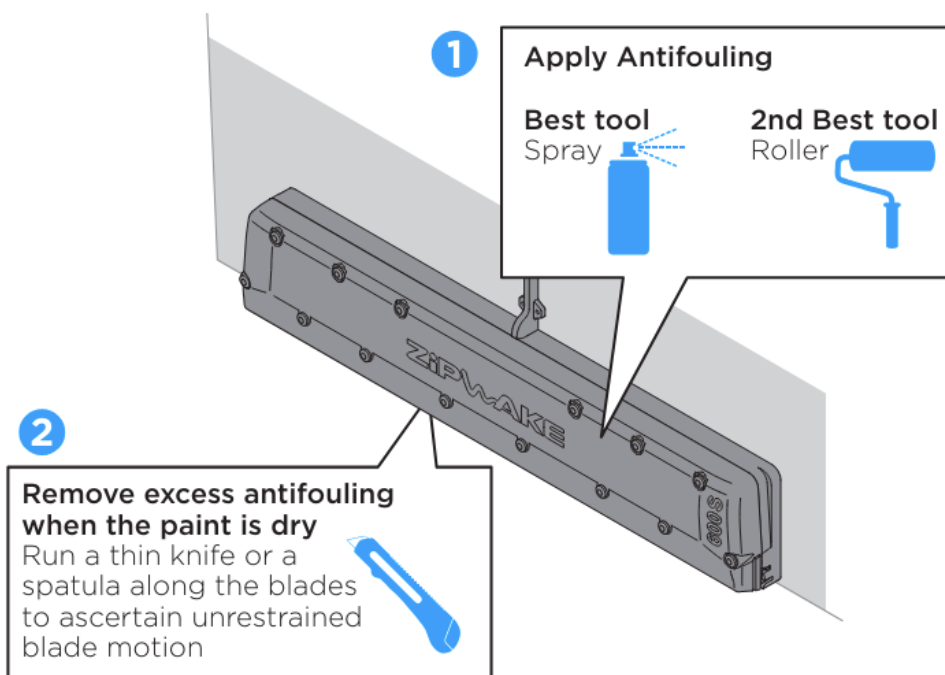
**INSTALL CONCEALED THRU-HULL FITTINGS UNDER THE WATERLINE**



## INSTALL THE INTERCEPTOR FRONTS



## PAINT THE INTERCEPTORS WITH ANTIFOULING



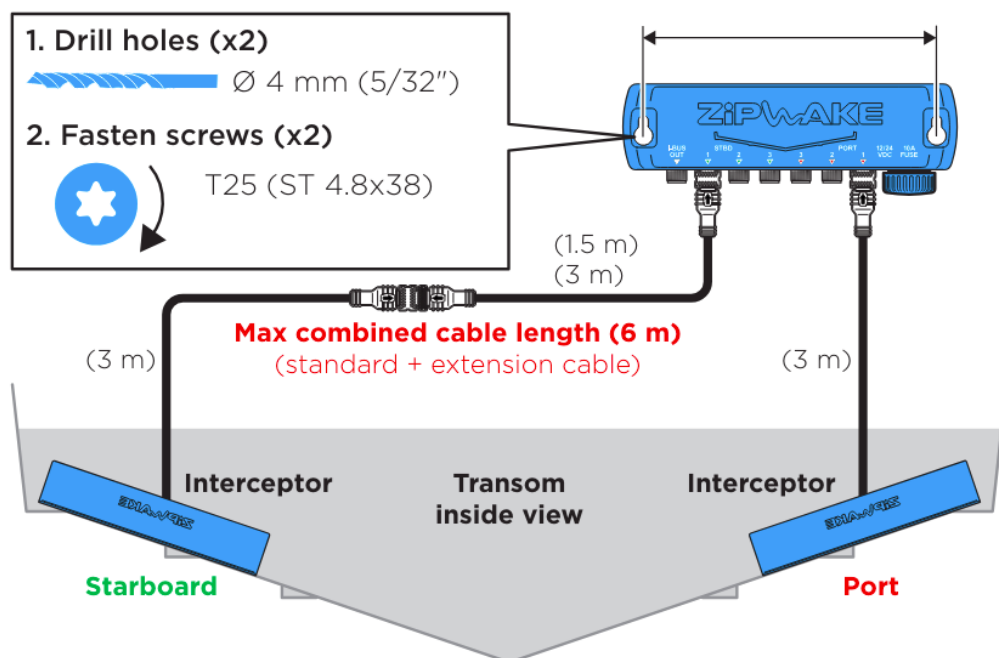
## DISTRIBUTION UNIT

### MOUNT THE DISTRIBUTION UNIT

Mount the distribution unit inboard where it is easy to connect it to both interceptors and power supply (battery) e.g. the engineroom or other suitable compartment.

### NOTE!

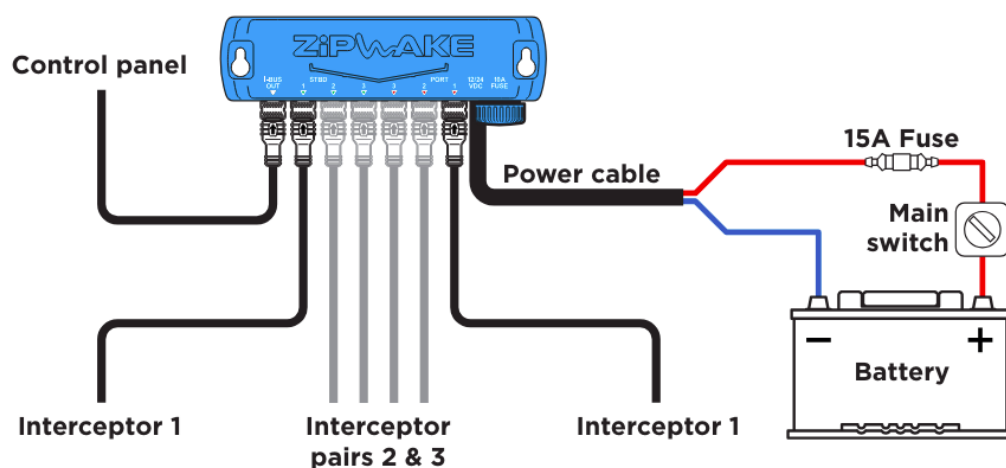
The maximum cable length (including extra cable) from an interceptor to the distribution unit is 6 m (20 ft).



## CONNECT THE DISTRIBUTION UNIT

### NOTE!

Detailed wiring diagram is available at the end of this folder.



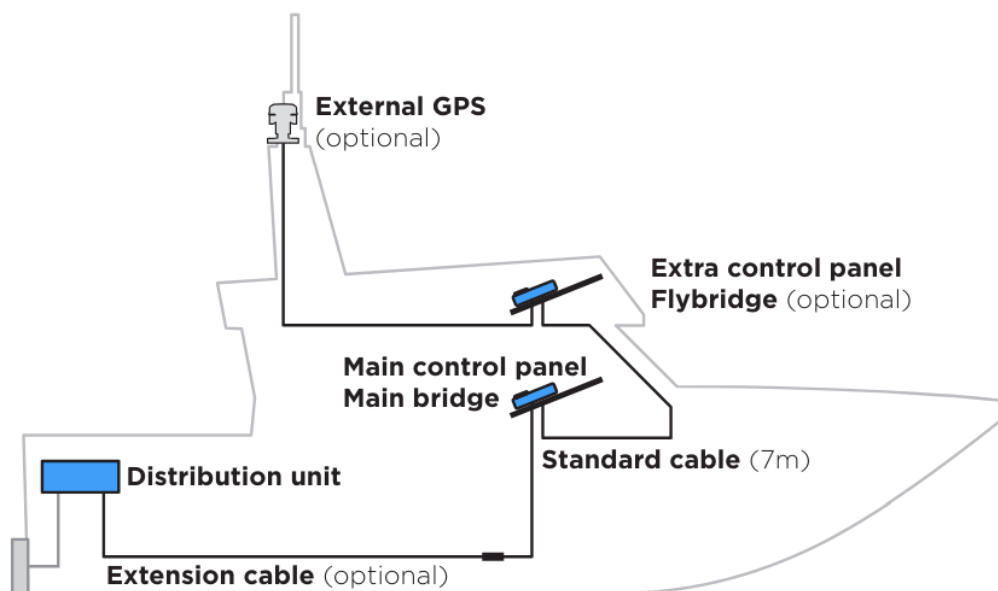
**NOTE!** The system allows an unpaired Interceptor mounted on the center of the transom. A centerline mounted Interceptor should always be connected to port side 3 to work properly.

## CONTROL PANEL

### ROUTE CABLES

Route the cables between the control panel(s), the distribution unit and optional equipment. Use optional extension cables if necessary.

A detailed wiring diagram is available at the end of this folder.



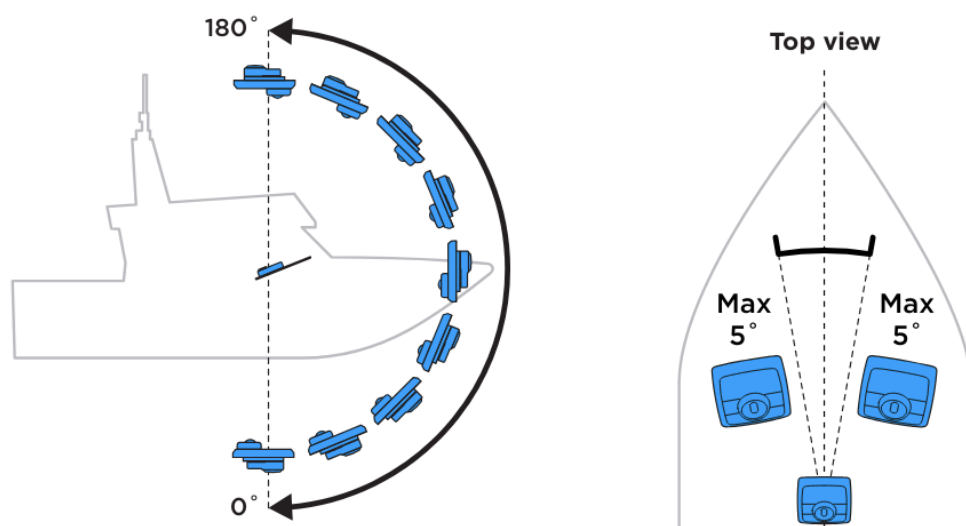
## PREPARE THE DASH

The control panel must be mounted within certain angles relative to the boat's axes for the built-in sensors to deliver reliable output.

Locate a free area on the dash suitable for mounting the control panel.

Use the control panel's template as a guide to see if it will fit next to other instruments.

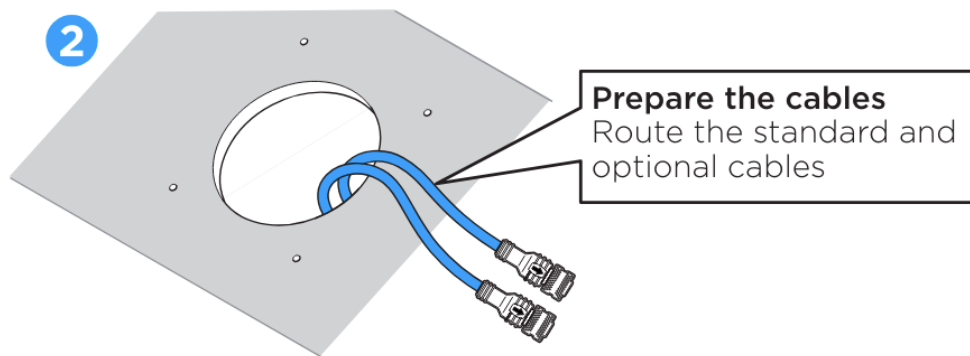
**NOTE!** 0.5 m (1.6 ft) safe distance to magnetic compass.



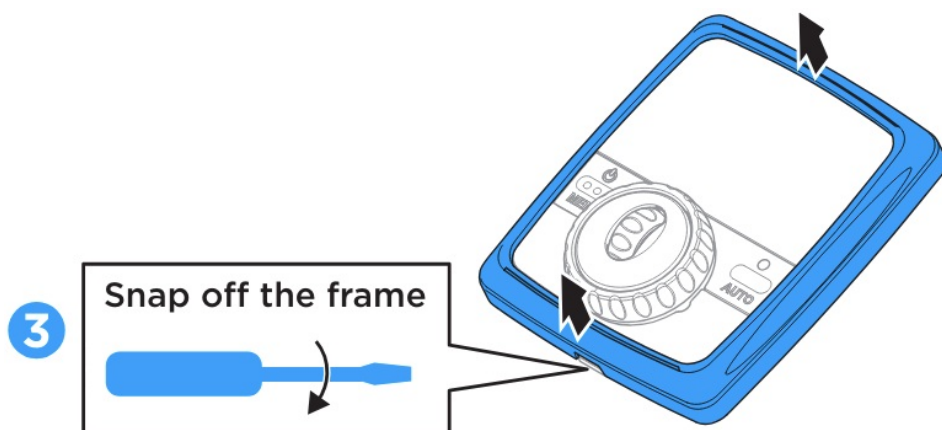
**NOTE!** Any angle between  $0-180^\circ$

## MOUNT THE CONTROL PANEL

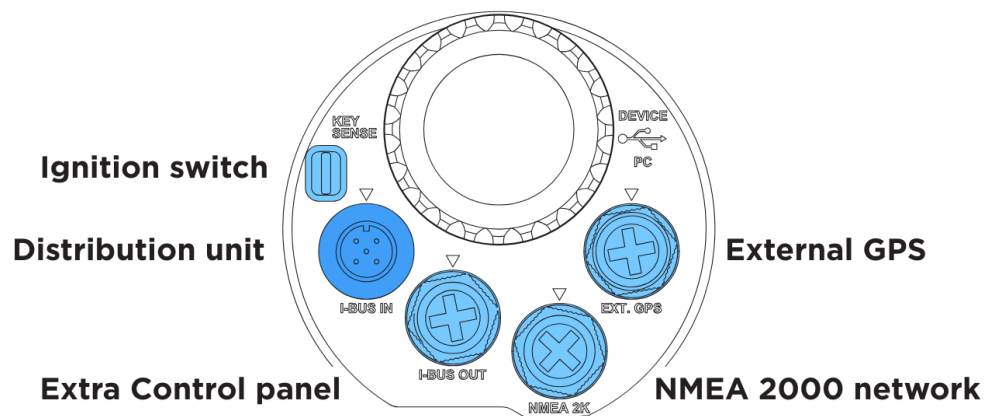


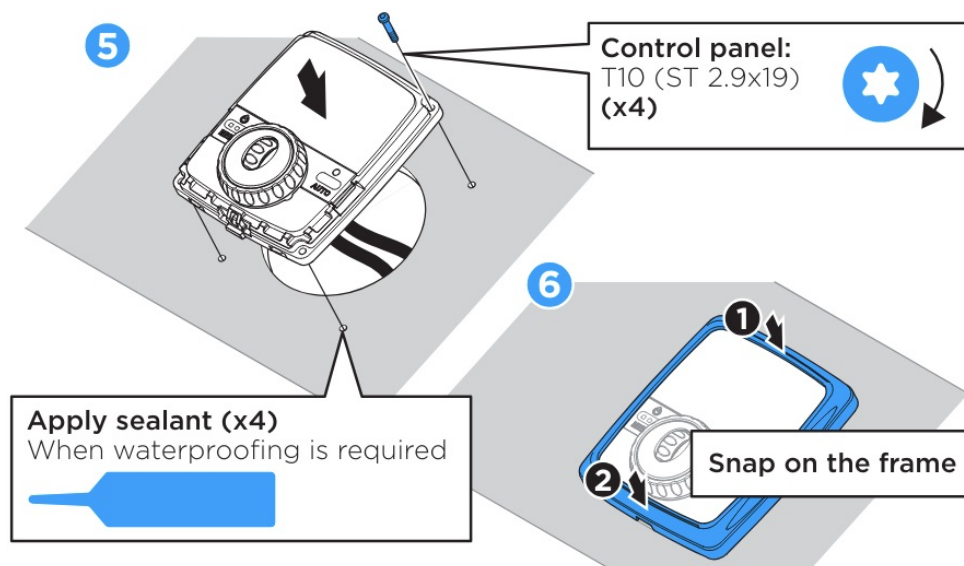


Flush mount option: refer to [www.zipwake.com](http://www.zipwake.com) for a drawing and 3D model.



Connect the cables on the back of the Control panel.



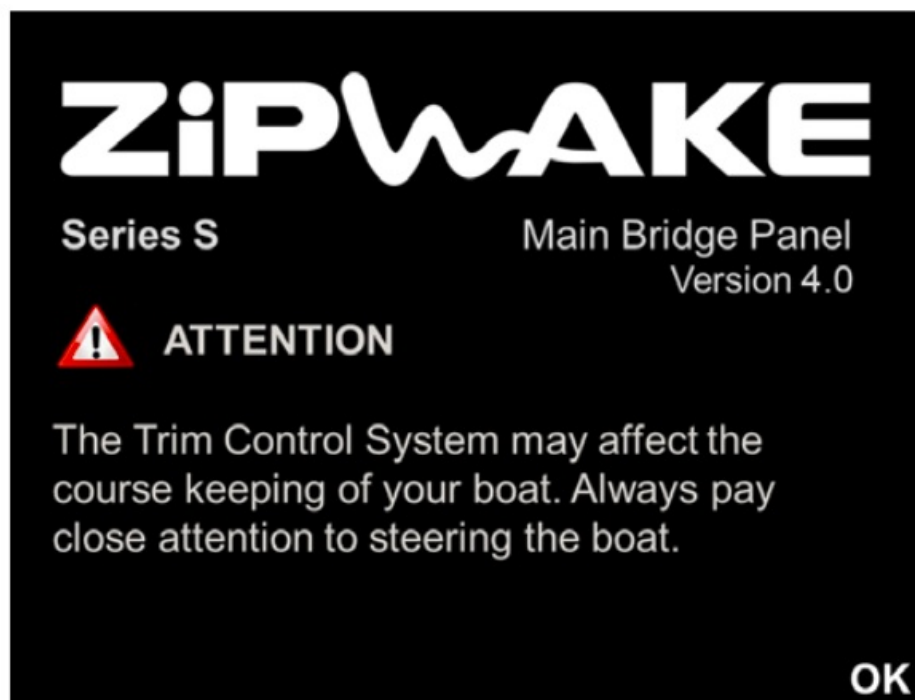


## INITIAL START

Refer to the Operator's Manual for detailed information about setting up and operating the system.

## SET UP THE SYSTEM

Press and hold the POWER/MENU button until the Zipwake logo appears on the display and follow the steps on the screen.

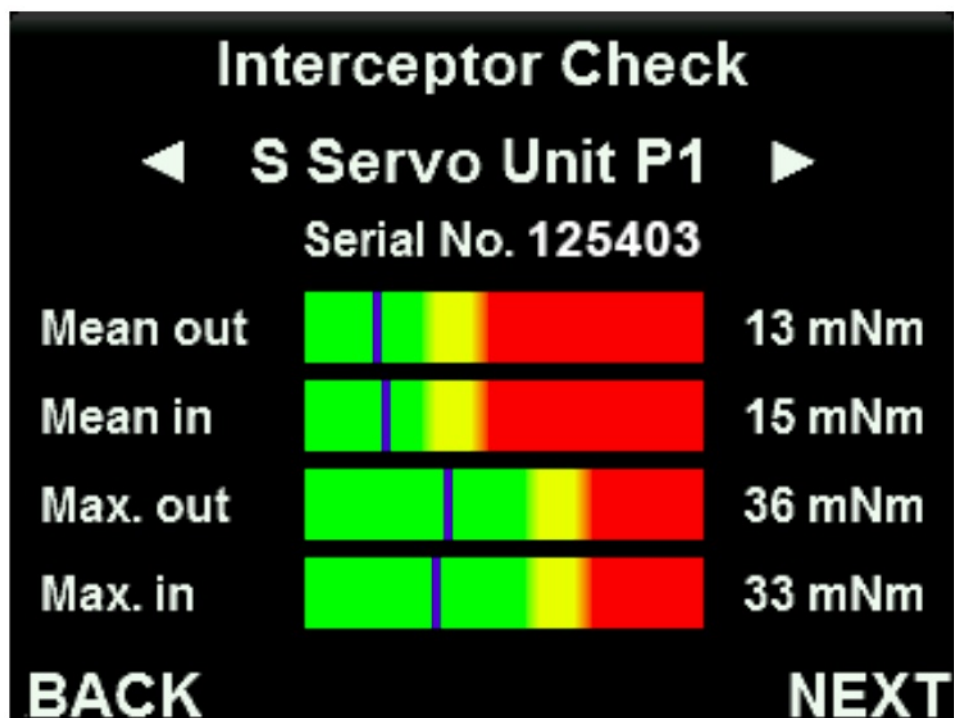


## INTERCEPTOR CHECK

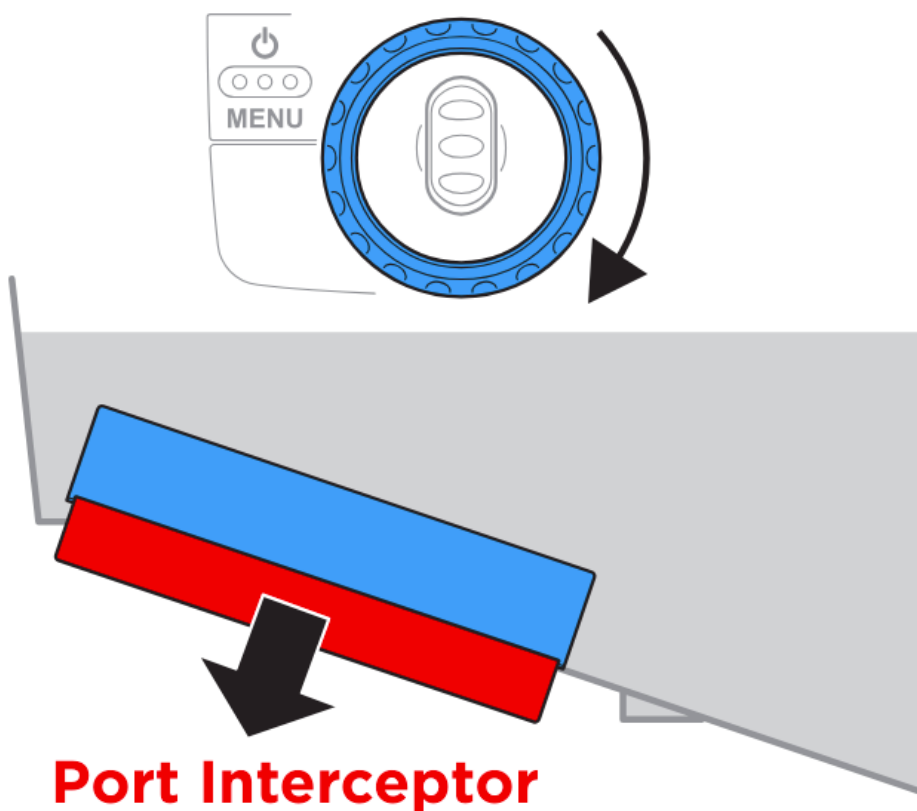
Carry out an Interceptor Check to verify function immediately after installation, before launching the boat.

### NOTE – All readings must be green!

Corrective actions are always necessary when excessive torque levels are observed. Verify the flatness of the transom, excess use of sealant behind the interceptor and/or excess antifouling between the blades and adjust if needed.



## VERIFY FUNCTION ON SHORE



1. Turn the Roll wheel clockwise
2. Port side Interceptor(s) should move out
3. Repeat counter-clockwise for starboard

## WIRING DIAGRAM

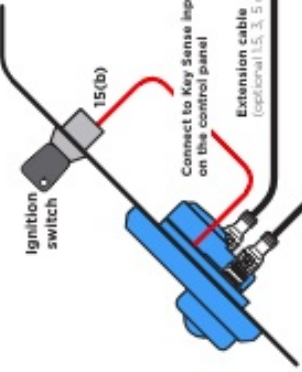
## ACCESSORIES

| <b>Model</b>              | <b>Part No.</b>     | <b>Description</b>   |
|---------------------------|---------------------|--|
| <b>IM</b>                 | 2012241             | INTEGRATOR MODULE  |
| <b>CP-S</b>               | 2011238             | CONTROL PANEL S WITH STANDARD CABLE 7 M                              |
| <b>DU-S</b>               | 2011239             | DISTRIBUTION UNIT S WITH POWER CABLE 4 M                             |
| <b>IT300-S</b>            | 2011232             | INTERCEPTOR 300 S WITH CABLE 3 M & CABLE COVERS                      |
| <b>IT450-S</b>            | 2011233             | INTERCEPTOR 450 S WITH CABLE 3 M & CABLE COVERS                      |
| <b>IT600-S</b>            | 2011234             | INTERCEPTOR 600 S WITH CABLE 3 M & CABLE COVERS                      |
| <b>IT750-S</b>            | 2011235             | INTERCEPTOR 750 S WITH CABLE 3 M & CABLE COVERS                      |
| <b>IT450-S V13</b>        | 2011482             | INTERCEPTOR 450 S V13 WITH CABLE 3 M & CABLE COVERS                  |
| <b>IT450-S V16</b>        | 2011483             | INTERCEPTOR 450 S V16 WITH CABLE 3 M & CABLE COVERS                  |
| <b>IT450-S V19</b>        | 2011484             | INTERCEPTOR 450 S V19 WITH CABLE 3 M & CABLE COVERS                  |
| <b>IT450-S V22</b>        | 2011485             | INTERCEPTOR 450 S V22 WITH CABLE 3 M & CABLE COVERS                  |
| <b>IT300-S CHINE PORT</b> | 2011702             | INTERCEPTOR 300 S CHINE PORT SIDE WITH CABLE 3 M & CABLE COVERS      |
| <b>IT300-S CHINE STBD</b> | 2011703             | INTERCEPTOR 300 S CHINE STARBOARD SIDE WITH CABLE 3 M & CABLE COVERS |
| <b>IT450-S CHINE PORT</b> | 2011704             | INTERCEPTOR 450 S CHINE PORT SIDE WITH CABLE 3 M & CABLE COVERS      |
| <b>IT450-S CHINE STBD</b> | 2011705             | INTERCEPTOR 450 S CHINE STARBOARD SIDE WITH CABLE 3 M & CABLE COVERS |
| <b>IT300-S INTER</b>      | 2011701             | INTERCEPTOR 300 S INTERMEDIATE WITH CABLE 3 M & CABLE COVERS         |
| <b>CP ALU FRAME</b>       | 2011281             | CONTROL PANEL ALU FRAME  |
| <b>CP COVER</b>           | 2011381-<br>2011385 | CONTROL PANEL COVERWHITE, LIGHT GRAY, MID GRAY, DARK GRAY, BLACK     |
| <b>GPU</b>                | 2011240             | GLOBAL POSITIONING UNIT WITH CABLE 5 M & MOUNT KIT                   |
| <b>GB</b>                 | 2011622             | GIMBAL BRACKET FOR CONTROL PANEL                                     |
| <b>CC-S</b>               | 2011071             | CABLE COVER S KIT  |
| <b>EC1.5-M12</b>          | 2011258             | M12 EXTENSION CABLE 1.5 M  |
| <b>EC3-M12</b>            | 2011259             | M12 EXTENSION CABLE 3 M  |
| <b>EC5-M12</b>            | 2011260             | M12 EXTENSION CABLE 5 M  |
| <b>EC10-M12</b>           | 2011261             | M12 EXTENSION CABLE 10 M   |
| <b>EC15-M12</b>           | 2011260             | M12 EXTENSION CABLE 15 M   |
| <b>EC20-M12</b>           | 2011261             | M12 EXTENSION CABLE 20 M   |

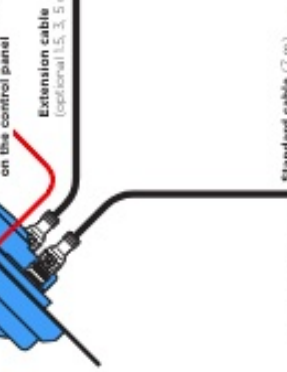
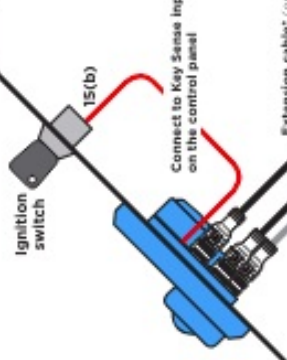
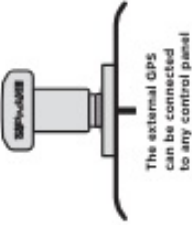
MAIN CONTROL PANEL (CP-S)



EXTRA CONTROL PANEL (CP-S)



EXTERNAL GPS (GPU)



INTEGRATOR MODULE (IM)

(optional connections for hard-wired system integration and wireless communication)

Standard cable (7 m)

Extension cable\* (optional)

Extension cable\* (optional)

DISTRIBUTION UNIT (DU-S)



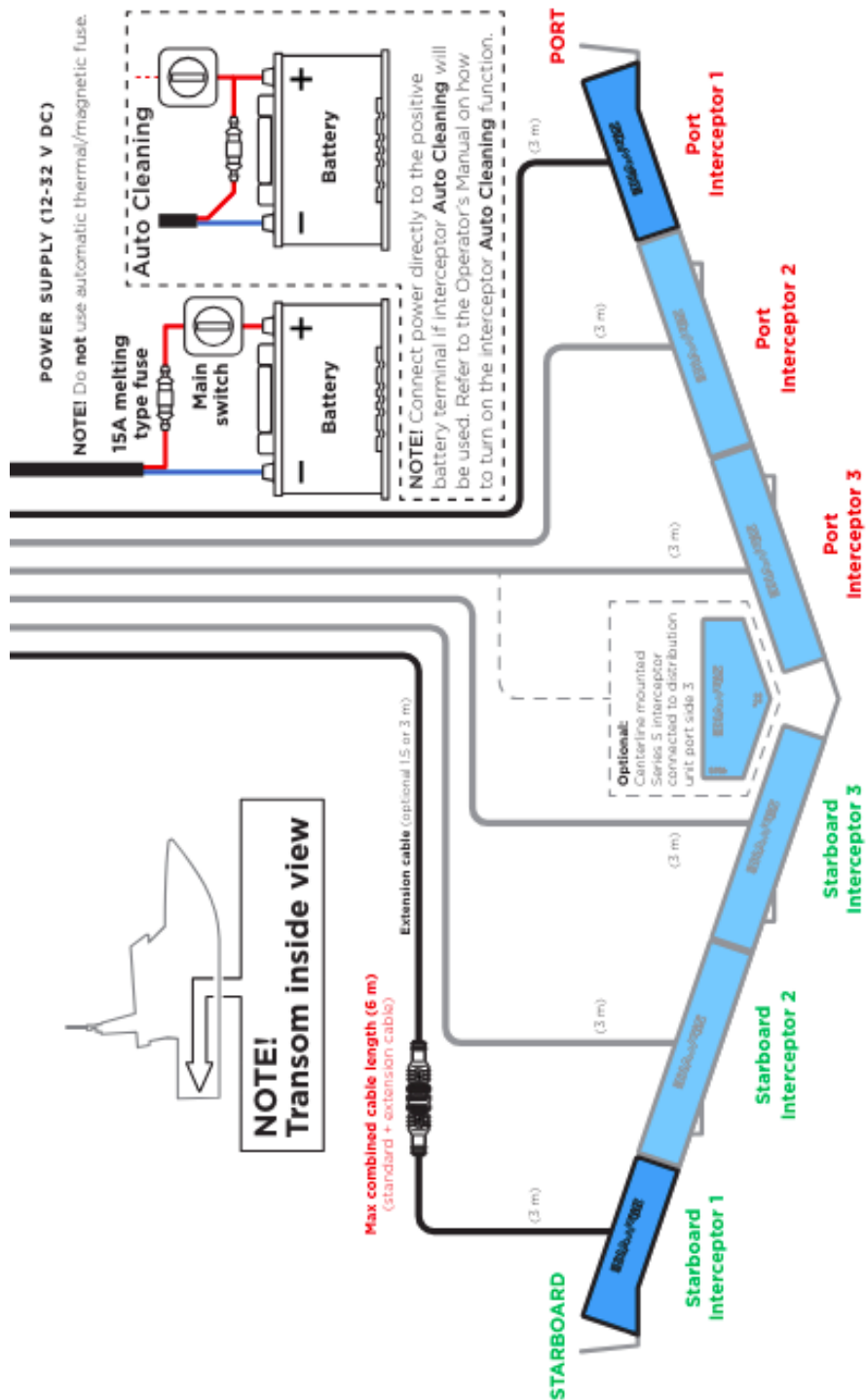
Power cable (4 m)

Standard cable (7 m)

To NMEA 2000 backbone  
(optional GPS source, external monitoring and/or control)

\* Extension cable (optional)  
(1.5, 3, 5, 10, 15 and 20 m)

Max combined cable length (15 m)  
(standard + extension cable)



Visit [zipwake.com](http://zipwake.com) for additional information such as:

- Operator's Manuals and Installation Guides in different languages
- Product specifications, including a list of accessories and spare parts
- Application examples and Interceptor mounting options
- Drawings and 3D models of system components
- Software upgrades for your Dynamic Trim Control System
- NMEA 2000 documentation

# ZIPWAKE

|  |  |
|--|--|
| <p>DYNAMIC TRIM CONTROL SYSTEM</p> <p><b>SERIES S</b></p> <p>INSTALLATION GUIDE</p> <p><b>ZIPWAKE</b><br/> <small>HYDRAULIC TRIM SYSTEMS</small></p> | <p><b><u><a href="#">ZIPWAKE S Series Dynamic Trim Control System</a></u></b> [pdf] User Guide</p> <p>300 S, 450 S, 600 S, 750 S, S Series Dynamic Trim Control System, S Series, Dynamic Trim Control System, Trim Control System, Control System, System</p> |
|--|--|

## References

- User Manual

[Manuals+](#), [Privacy Policy](#)

This website is an independent publication and is neither affiliated with nor endorsed by any of the trademark owners. The "Bluetooth®" word mark and logos are registered trademarks owned by Bluetooth SIG, Inc. The "Wi-Fi®" word mark and logos are registered trademarks owned by the Wi-Fi Alliance. Any use of these marks on this website does not imply any affiliation with or endorsement.