

ZipNVR IP-CAM852W 360 Degree IP Camera Instruction Manual

Contents

- [1 ZipNVR IP-CAM852W 360 Degree IP Camera](#)
- [2 Product Information](#)
- [3 Connections and Dimensions](#)
- [4 Dimensions](#)
- [5 Mounting and SD Card Installation](#)
- [6 Setup Options](#)
- [7 Documents / Resources](#)
 - [7.1 References](#)



ZipNVR IP-CAM852W 360 Degree IP Camera



Product Information

Key Features – IP-CAM852W

The IP-CAM852W is a budget-conscious eyeball style camera designed for IP systems. It features motion detection, a durable metal exterior suitable for both indoor and outdoor use, up to 45m IR range (true day/night filter), 2MP resolution, built-in PoE, and H265 and H264 codec support.

- PoE & 12V
- SD card slot
- Micro SD Card Slot
- Audio In – Audio Out
- 2.8-12mm Manual Vari-focal lens
- 2MP
- IR
- Perfect for ZIP NVR Kits

Essential Tools and ZipFinder

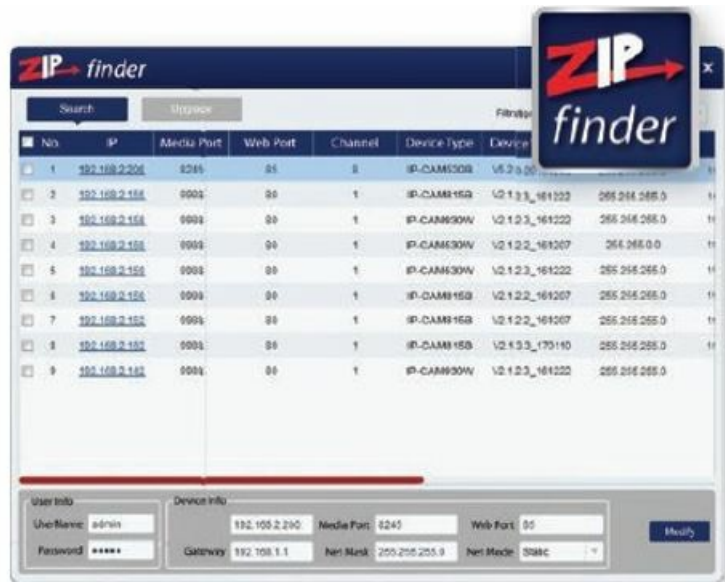
ZipFinder is a Windows PC software that helps discover and configure IP cameras on a network. It is useful for non-PoE installations and can help with troubleshooting issues such as forgotten or unknown IP addresses. To download ZipFinder, visit ZipNVR.com.

To install this product you will need:

- Laptop / Windows PC
- Screwdriver
- Drill
- Hammer
- ZIP NVR or DVR
- PoE Switch / 12V DC power supply
- Ethernet CAT5/5e/6 Cable

ZipFinder – IP Camera Configuration Tool

- ZipFinder is a Windows PC software for discovering and configuring IP cameras a network.
- Use ZipFinder on non-PoE installs, to help problem solving issues such as forgotten or unknown IP Addresses.
- To download visit ZipNVR.com



Connections and Dimensions

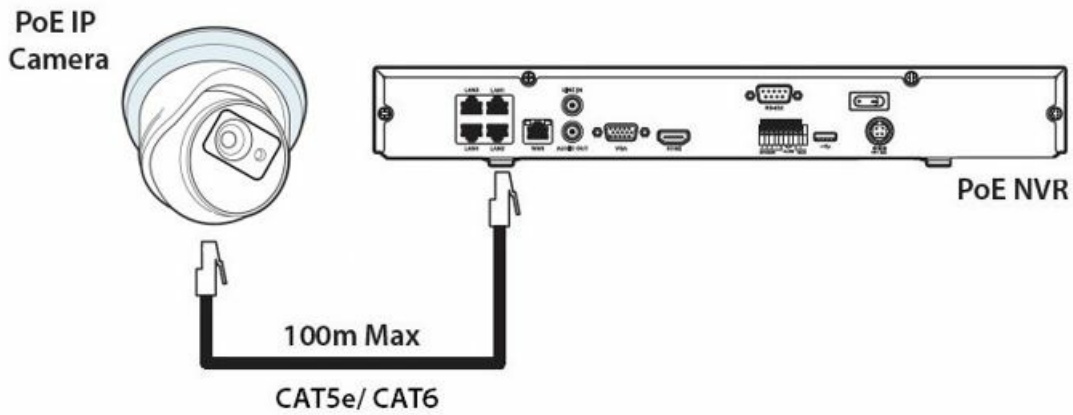
IP-CAM852W



Powering the camera:

- Option 1 – Power the camera from 12V DC (via the 2.1mm DC Socket), with a current consumption of 750mA. Ensure correct polarity when making connections.
- Option 2 – Power the camera using a PoE 48V RJ45 Socket. When connecting to a ZIP PoE NVR, plug the camera directly into the NVR's built-in PoE switch.

The camera should become visible after approximately 1 minute of being connected.



Dimensions



*Dimensions Exclude Bracket

*Dimensions Exclude Bracket

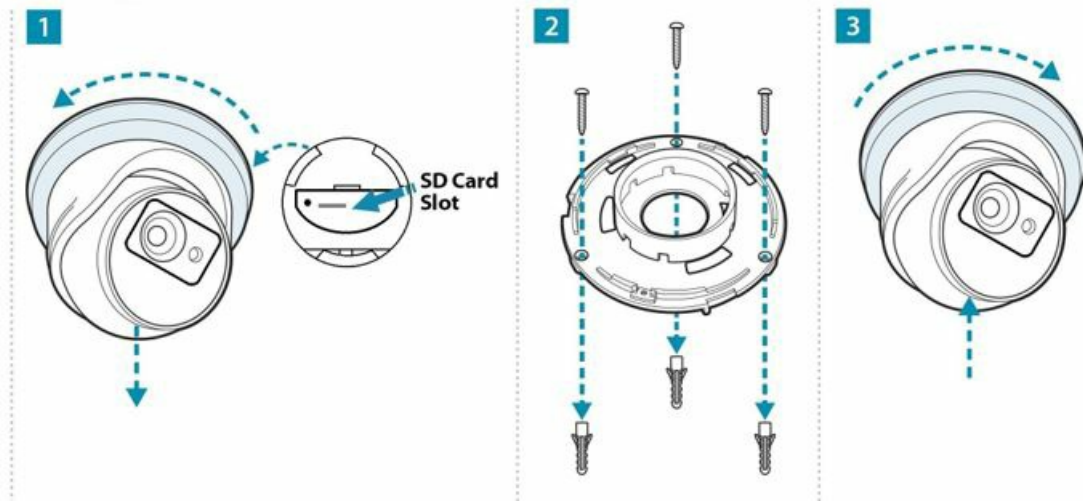
Mounting and SD Card Installation

To enable local recording on the camera itself, an SD card must be installed. The recording time will vary depending on the SD card size and encoding settings:

- 32GB SD Card: 31 hours
- 64GB SD Card: 62 hours
- 128GB SD Card (MAX): 124 hours
- 256GB SD Card (MAX): 248 hours

The camera can be set to only record when triggered by motion detection, alarm input, or AI smart features, which maximizes the recording time. Remember to remove power from the camera before inserting or removing the SD card.

Eyeball

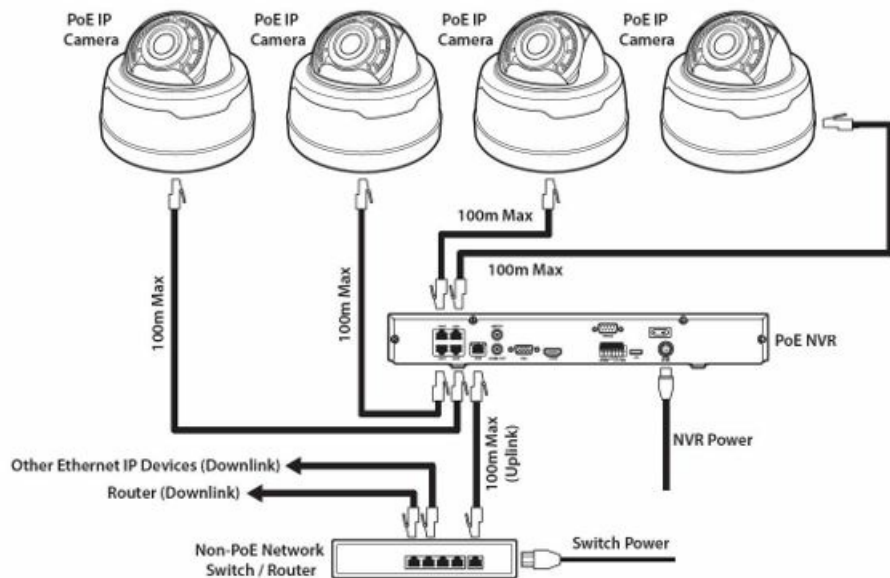


A template is provided in the box for marking the hole positions for the fixing screws.

Setup Options

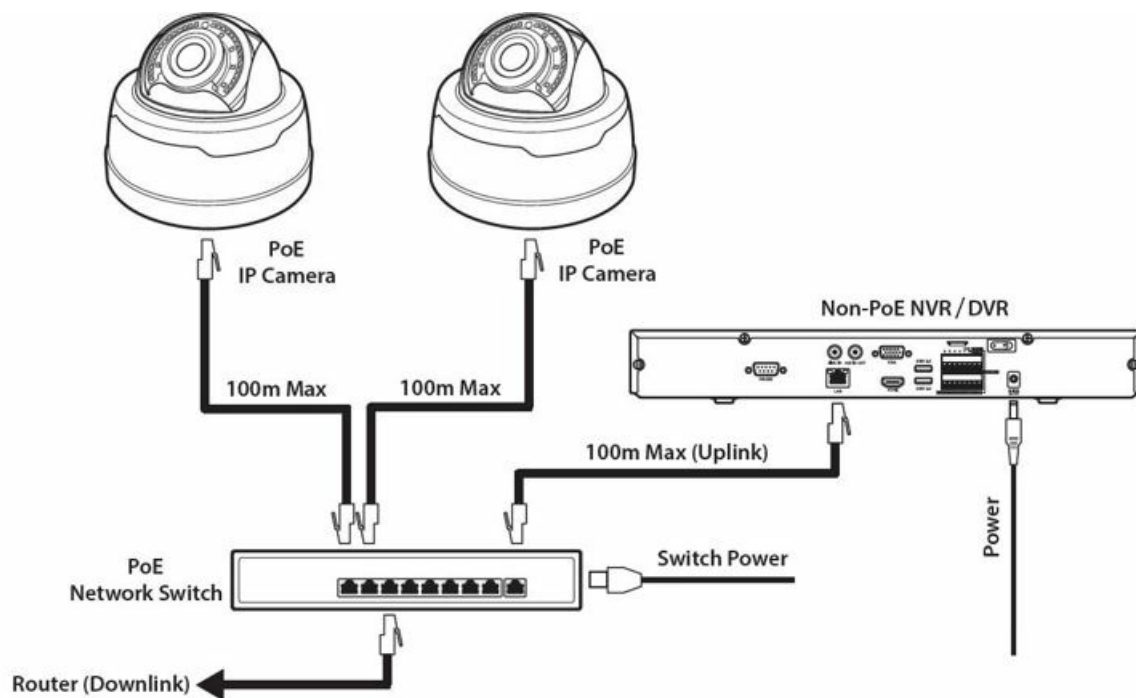
PoE ZIP NVR

- When connecting to a ZIP PoE NVR plug the camera directly into the NVR's built in PoE switch.
- The camera should automatically become visible after being connected for approximately 1 minute.
- The 100m distance for a camera can be increased when the PoE Mode is set to EPoE.
- In the menu on a ZIP PoE NVR go to:- Video > IP Channels > PoE Mode



Non-PoE ZIP NVR


When connecting cameras to a Non-PoE NVR, they are first connected to an external network switch which is in-turn connected to the NVR as shown below.



See Extra Resources for more information on Adding IP Cameras manually to a ZIP Recorder.

For more resources and general maintenance instructions, refer to ZipDVR.com.

Documents / Resources

 <p>Instruction Manual IP-CAM852W ZipDVR.com</p>	<p>ZipNVR IP-CAM852W 360 Degree IP Camera [pdf] Instruction Manual IP-CAM852W 360 Degree IP Camera, IP-CAM852W, 360 Degree IP Camera, Degree IP Camera, IP Camera, Camera</p>
---	---

References

- [How to add an IP Range to a Windows PC](#)
- [Zip Finder - IP Camera Discovery Tool - SoftCCTV.com](#)
- [ZipNVR: Home](#)
- [ZipNVR: Home](#)
- [Zip Finder - IP Camera Discovery Tool - SoftCCTV.com](#)