



Zip CS100 Arc Chrome Zenith Water Instructions

[Home](#) » [Zip](#) » Zip CS100 Arc Chrome Zenith Water Instructions 

Contents

- [1 Zip CS100 Arc Chrome Zenith Water](#)
- [2 Product Information](#)
- [3 Product Usage Instructions](#)
- [4 Ventilation requirements](#)
- [5 HydroTap Tap options](#)
- [6 Tap Positioning](#)
- [7 Documents / Resources](#)
- [8 Related Posts](#)



Zip CS100 Arc Chrome Zenith Water



Product Information

- **Product Name:** BKL2 HydroTap G5 v1.10 07.04 CS100
- **Tap Options:** HydroTap Arc Plus Tap, HydroTap Cube Plus Tap
- **Ventilation Requirements:** Contact your local service provider if ventilation is not suitable
- **Clearance Envelope:** Position the Tap and the Command Centre as close together as possible
- Vent Tray (Kit No. 93541) for air outlet
- **Power Outlet:** IEC Flex & Plug 230-240V, 50Hz
- CO2 Gas Cylinder required
- Main cold water isolation valve (not supplied)
- **Note:** Air inlet grille should not be impeded by pipework

Product Usage Instructions

1. Ensure proper ventilation according to the requirements. Contact your local service provider if the existing ventilation is not suitable.
2. Position the Tap and the Command Centre as close together as possible within the clearance envelope.
3. If using a Vent Tray, install it as per the provided kit (Kit No. 93541).
4. Select the desired Tap option: HydroTap Arc Plus Tap or HydroTap Cube Plus Tap.
5. Position the Tap to dispense into the sink, allowing enough clearance for a cup or teapot. Alternatively, mount it on a Font (available as an accessory).
6. Ensure there is a suitable power outlet (IEC Flex & Plug 230-240V, 50Hz) for the product.
7. Connect the CO2 gas cylinder to the system.
8. Ensure there is a mains cold water isolation valve nearby (not supplied).

9. Avoid obstructing the air inlet grille with pipework.

Note: The provided installation diagrams are for illustrative purposes only and do not show hoses to scale. Hoses cannot be lengthened.



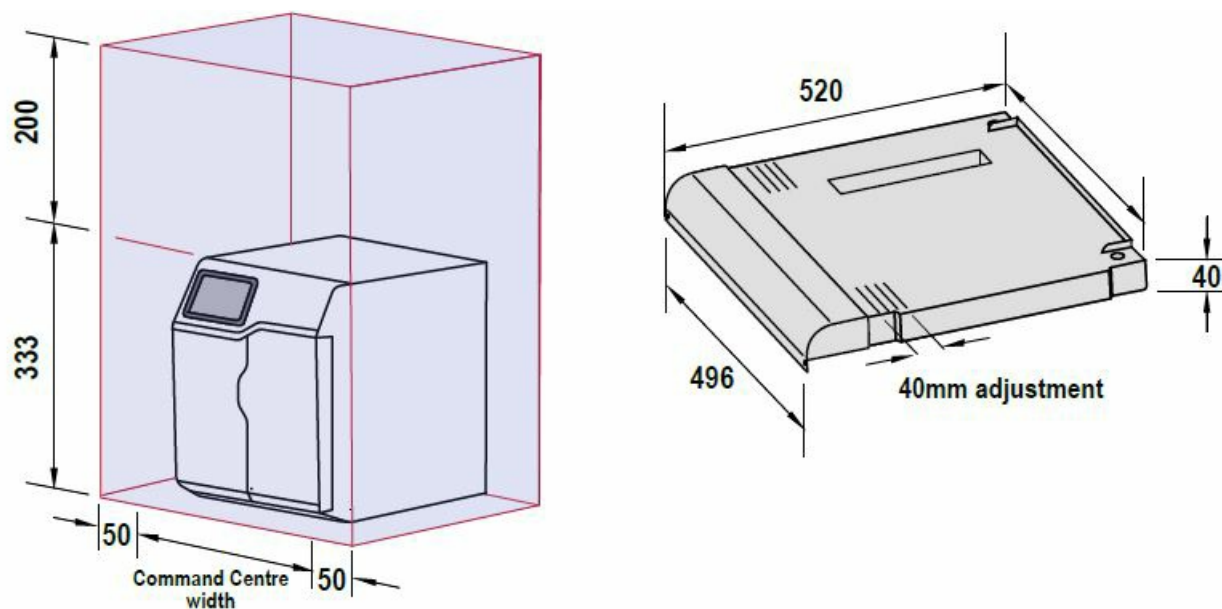
Ventilation requirements

Contact your local service provider if ventilation is not suitable

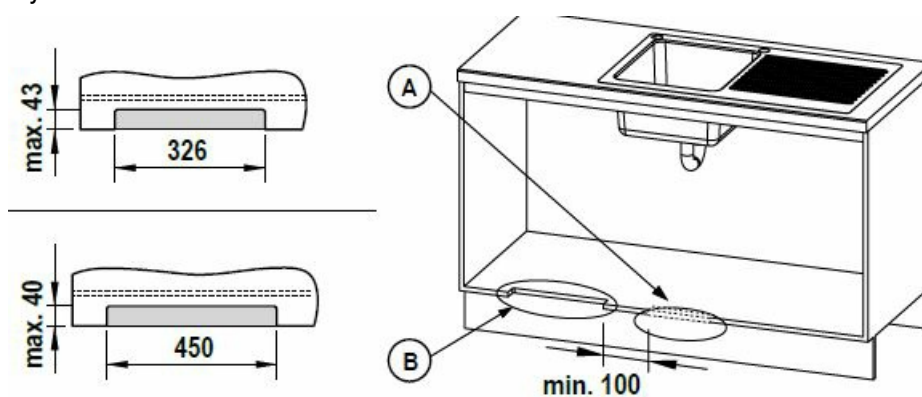
- **Clearance envelope**

Position the Tap and the Command Centre as close together as possible.

- **Vent tray (kit no. 93541)**

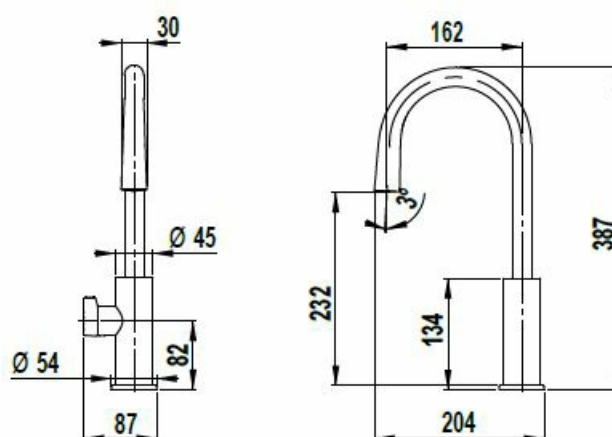


1. **Detail A.** Air inlet grille Cut-out in cabinet floor
2. **Detail B.** Vent Tray air outlet Cut-out in cabinet floor

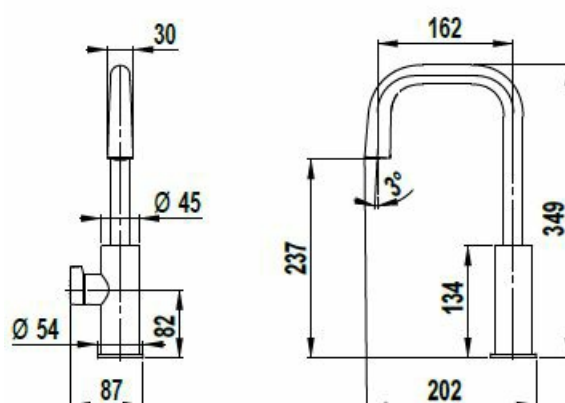


HydroTap Tap options

- HydroTap Arc Plus Tap

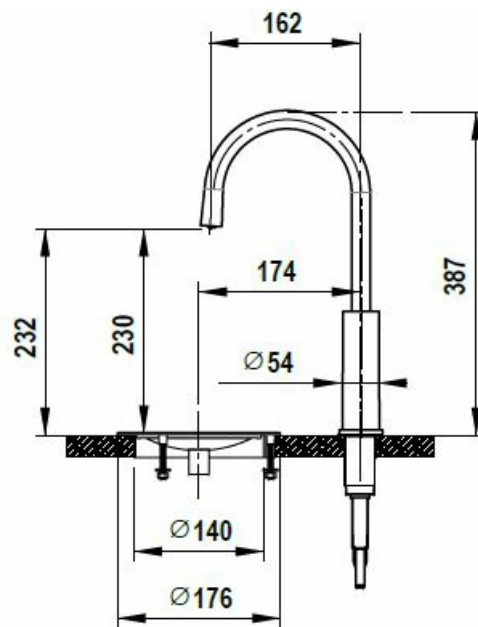


- HydroTap Cube Plus Tap

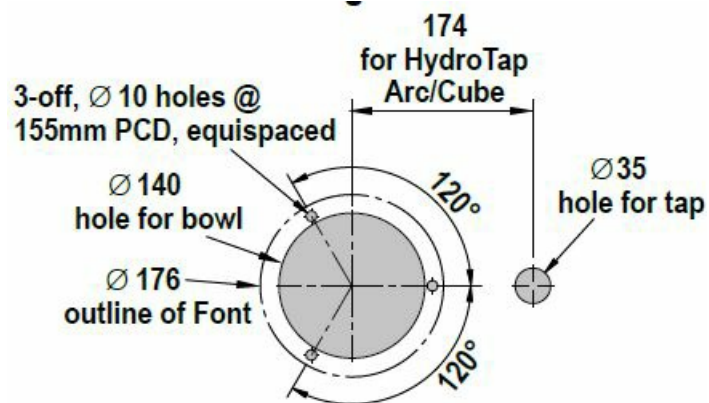


Standalone Font

- with Arc Plus Tap

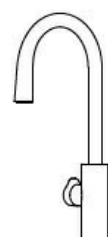
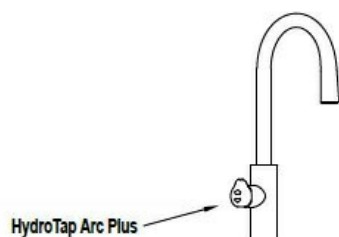
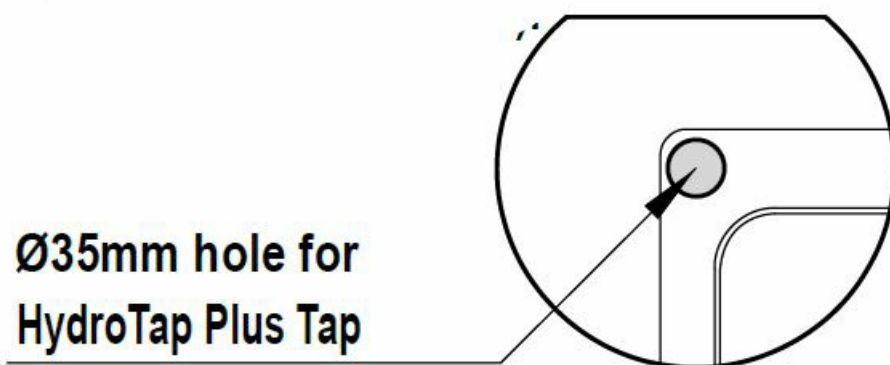


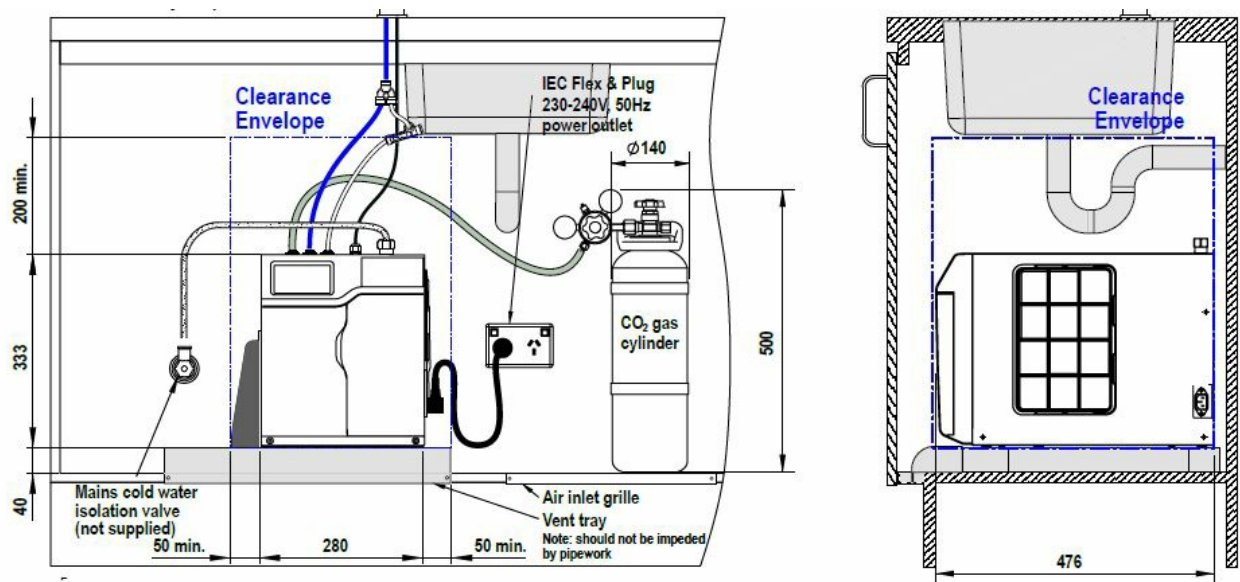
- Cutting detail



Tap Positioning

Position the Tap to dispense into the sink, allowing clearance for a cup or teapot. Alternatively, mount on a Font (available as an accessory).





SCALE 1:5

ALL DIMENSIONS IN MM UNLESS OTHERWISE SPECIFIED. INSTALLATION DIAGRAMS ARE FOR ILLUSTRATIVE PURPOSES ONLY. HOSES ARE NOT SHOWN TO SCALE AND CANNOT BE LENGTHENED

HydroTap G5 CS100

shown with HydroTap Arc Plus.

Documents / Resources



[Zip CS100 Arc Chrome Zenith Water \[pdf\] Instructions](#)

CS100, Arc, Cube, CS100 Arc Chrome Zenith Water, CS100, Arc Chrome Zenith Water, Chrome Zenith Water, Zenith Water, Water