

# Zip BCS Arc Plus HydroTap Instruction Manual

[Home](#) » [Zip](#) » Zip BCS Arc Plus HydroTap Instruction Manual 

## Installation instructions



### Contents

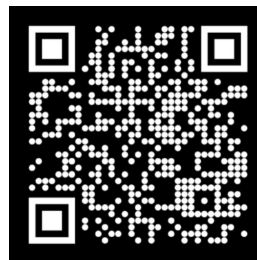
- 1 Zip HydroTap
  - 1.1 Using these instructions
  - 1.2 Tools needed for tap installation
  - 1.3 Water supply pressure requirements
  - 1.4 (1) Positioning
  - 1.5 (2) Cut the hole
  - 1.6 (3) Mount the tap
  - 1.7 (4) Fit the tube kit
  - 1.8 (5) Command Centre connections
  - 1.9 (6) Cleaning and general maintenance
- 2 Documents / Resources
- 3 Related Posts

## Zip HydroTap

**Arc Plus & Cube Plus**  
**B, BA, BC, BCS, CS, C**



Australia



UK

Visit our website to download the manuals

807292 v1.01 10.22 Arc Plus Cube Plus Instructions

#### Using these instructions

Please refer to all safety and installation requirements detailed in the Quick start guide provided with the HydroTap Command Centre, and HydroTap Command Centre installation instructions found online, prior to installation of, or any change to, the complete system.



#### **WARNING**



#### **Read the instructions**

**Before commencing the installation, download & read the HydroTap Command Centre installation instructions**

---

#### Tools needed for tap installation

In addition to normal tools, the following (or equivalent equipment) will be required, (not supplied).

- 35mm diameter sheet metal hole punch for sinks.
- 35mm diameter hole saw for worktops.

- Tube spanner for fixing the tap assembly.



Be aware of the risks of hazards which could cause harm when using tools. Assess the risks before starting the installation.

#### Water supply pressure requirements

	Min – Max pressure, kPA (bar)	
	Australia	UK
HydroTap	170 (1.7) – 700 (7.0)	170 (1.7) – 500 (5.0)
Sparkling HydroTap	250 (2.5) – 700 (7.0)	250 (2.5) – 500 (5.0)
Booster	200 (2.0) – 700 (7.0)	200 (2.0) – 500 (5.0)

#### (1) Positioning

Position the tap such that it dispenses into the sink bowl with clearance for a cup or tea pot.

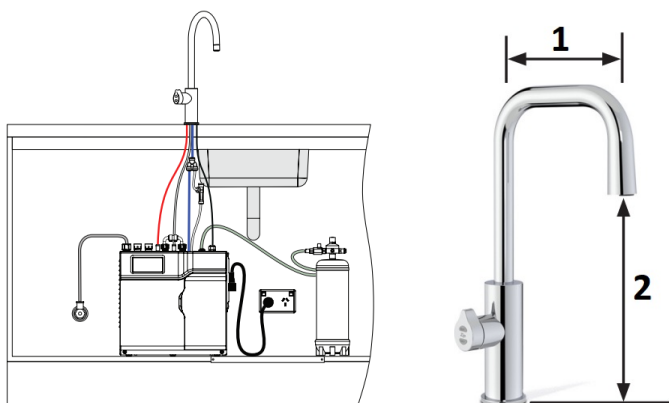


- Ensure that taps are positioned to minimise the risks of scalding by dispensing boiling water while using the tap.

- All tubes must have constant fall.

Ensure there are no kinks or sags.

Position Command Centre  
and tap as close together as possible. See below.



1. 162 mm

2. 237mm

(\*232mm for Arc Plus)

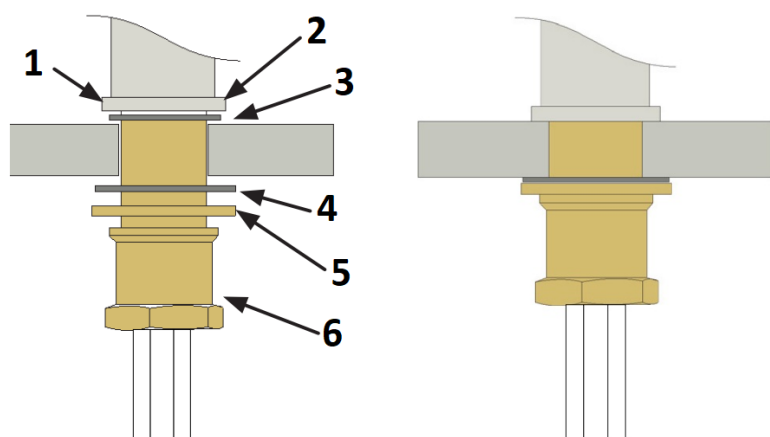
---

## (2) Cut the hole



- Cut a Ø35mm hole in the worktop / sink.
- Make sure the tap location will allow the tap spout to drain into the sink.

## (3) Mount the tap



1. Base ring
2. Upper o-ring
3. Lower o-ring
4. Rubber washer
5. Metal washer
6. Tap nut

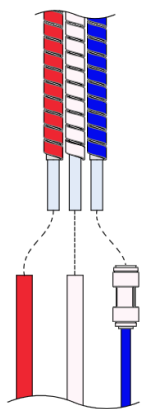
---

## (4) Fit the tube kit

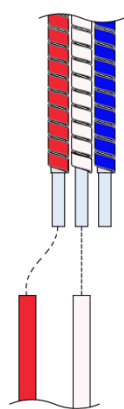
Boiling ambient

Boiling

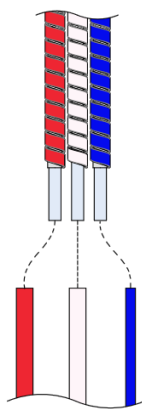
Boiling chilled



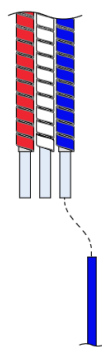
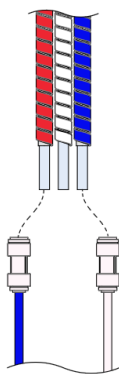
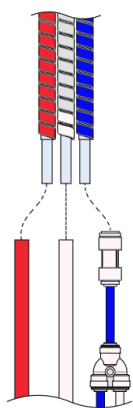
Boiling, chilled  
sparkling



Chilled  
sparkling



Chilled



#### (5) Command Centre connections

<b>USB</b>	Connected to the Tap.
<b>Boiling out</b>	Red silicone tube from tap. Cut to length.
<b>Chilled out</b>	(BC, C) Blue silicone tube from tap, (BCS, CS, BA) Blue JG pipe from tap. Cut to length.
<b>Vent</b>	Clear silicone tube from tap. Cut to length.
<b>Sparkling out</b>	White JG pipe from tap. Cut to length.
<b>Ambient out</b>	Blue JG pipe from tap. Cut to length.

#### (6) Cleaning and general maintenance

Wipe surfaces with a damp cloth and then wipe dry with a clean, dry cloth. Do not use disinfectant sprays without wiping dry afterwards.



**Zip Water**

ABN 46 000 578 727

67 – 77 Allingham Street, Condell Park, NSW 2200

Postal: Locked Bag 80, Bankstown 1885, Australia

(+612) 9796 3100 | Free Call (Aust): 1800 947 827

[www.zipwater.com](http://www.zipwater.com)

**Zip Water UK**

Trafalgar House

Rash's Green, Dereham,

Norfolk NR19 1JG

0345 6 005 005 | [sales@zipindustries.co.uk](mailto:sales@zipindustries.co.uk)

[specify.zipwater.co.uk](http://specify.zipwater.co.uk)

**Documents / Resources**



[Zip BCS Arc Plus HydroTap](#) [pdf] Instruction Manual

BCS Arc Plus HydroTap, BCS, Arc Plus HydroTap, HydroTap, Arc Plus