



Zintronic Sharing Camera Using CamHiPro Application Instructions

[Home](#) » [Zintronic](#) » Zintronic Sharing Camera Using CamHiPro Application Instructions 



How to share camera using
CamHiPro application
This manual refers to Zintronic 'A' & 'P' series.

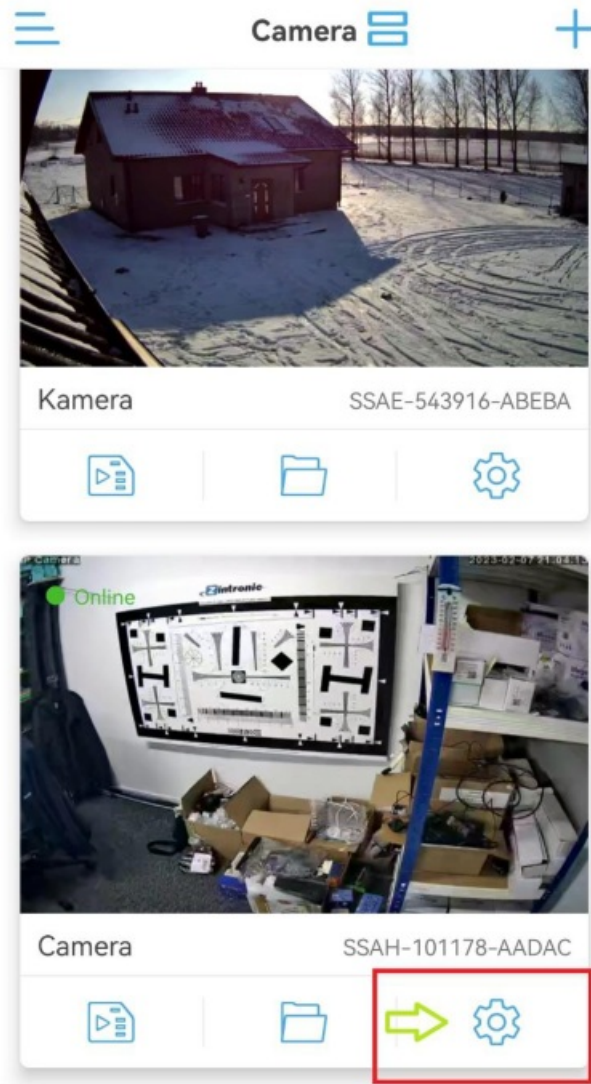
Contents

- [1 Sharing camera using CamHiPro application](#)
- [2 Documents / Resources](#)
- [3 Related Posts](#)

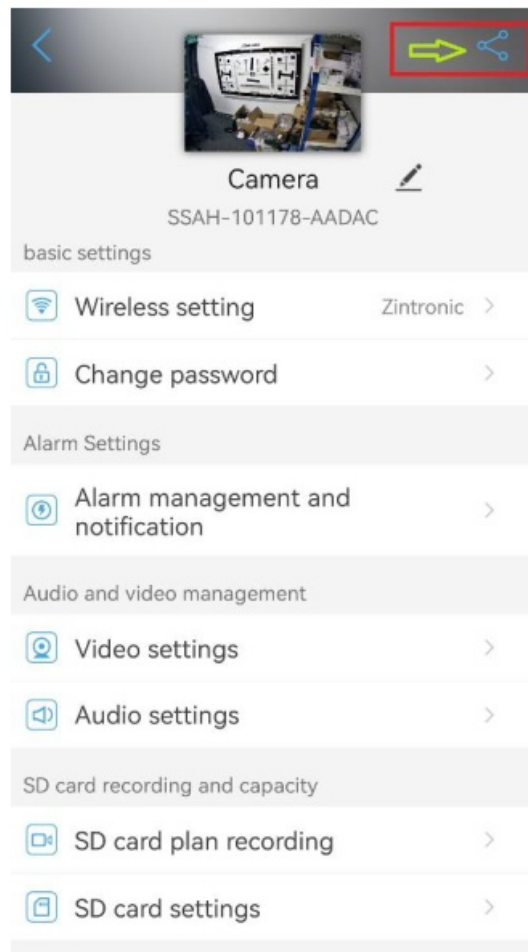
Sharing camera using CamHiPro application

How to share camera to the other user:

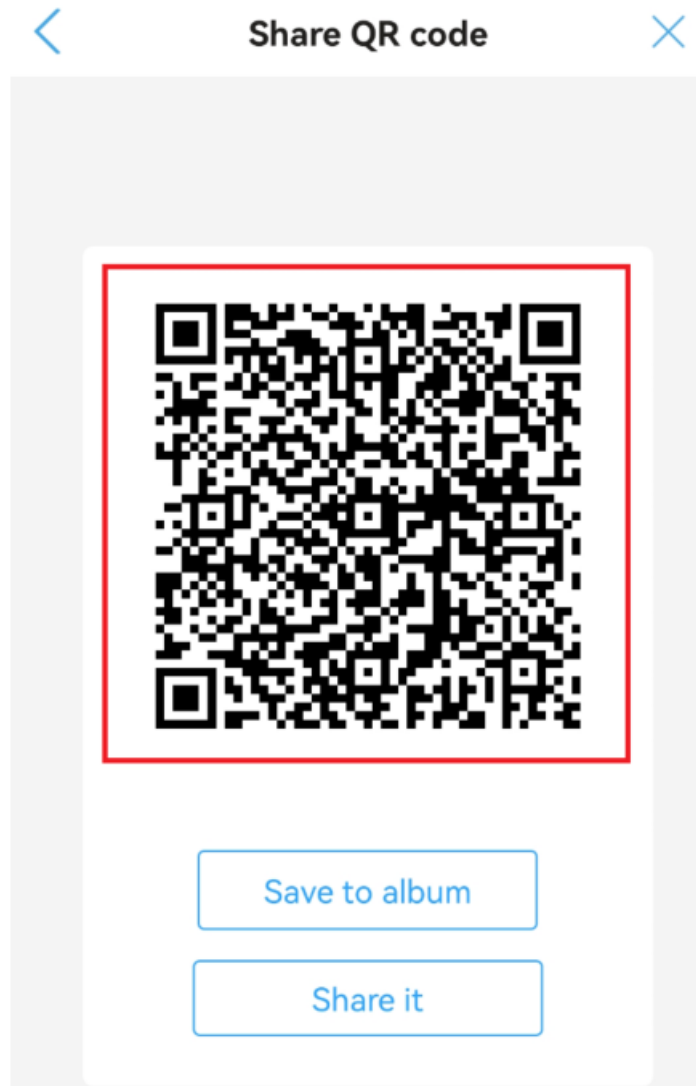
1. Open CamHiPro application and click "Settings" icon like on the screen below:



2. Click „Share” icon in the top right corner:

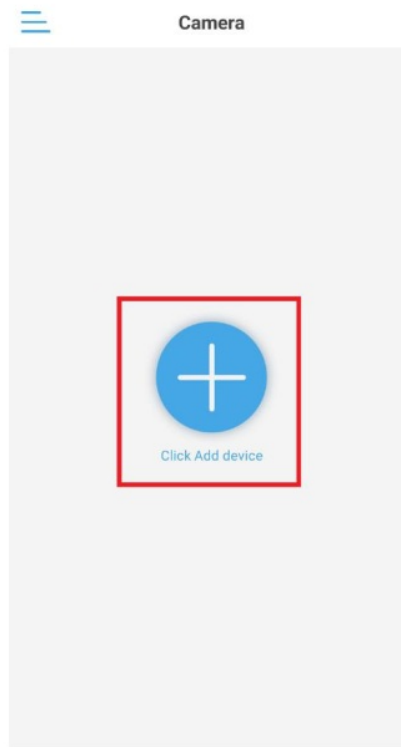


3. It will show QR code ready to scan by new user:

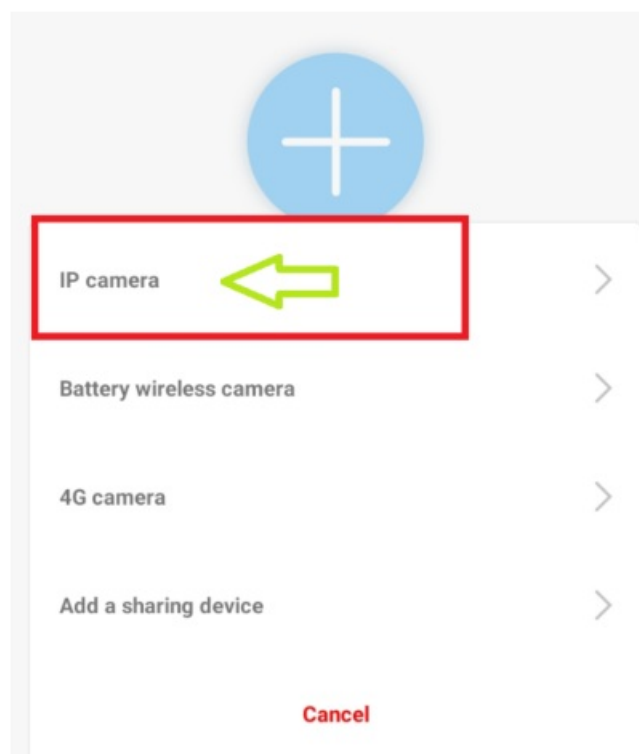


Adding camera by new user

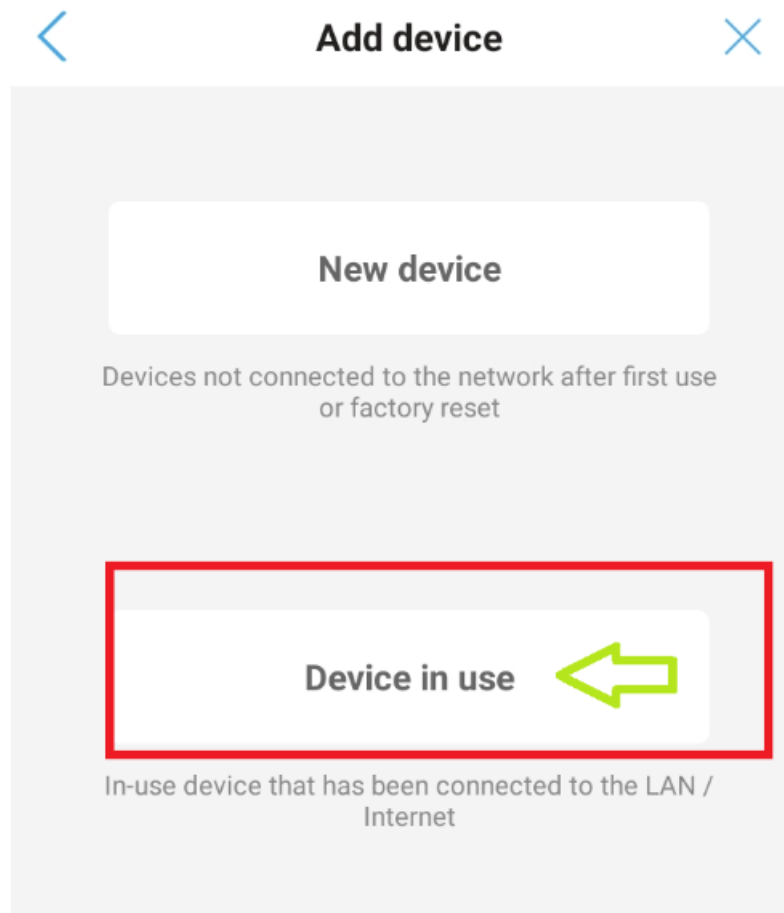
1. Open CamHiPro application by new user and click „+” button in the top right corner or “Click Add device” in the middle of the screen (when we have not added any other camera yet):



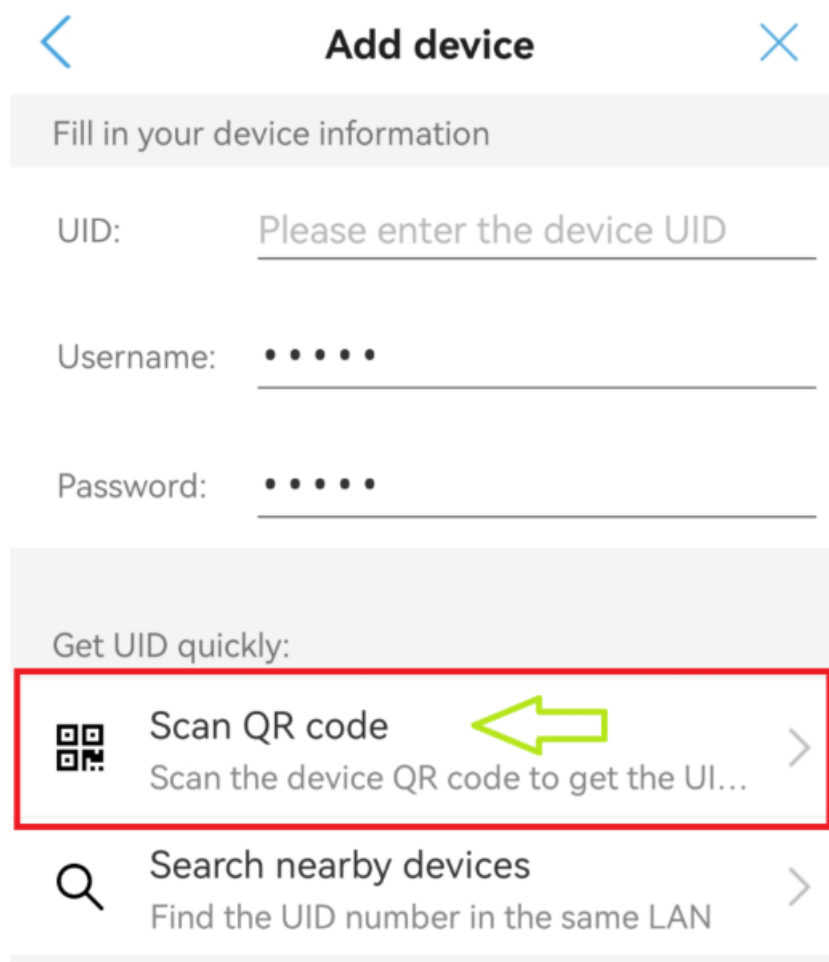
2. Choose an option „IP Camera”:



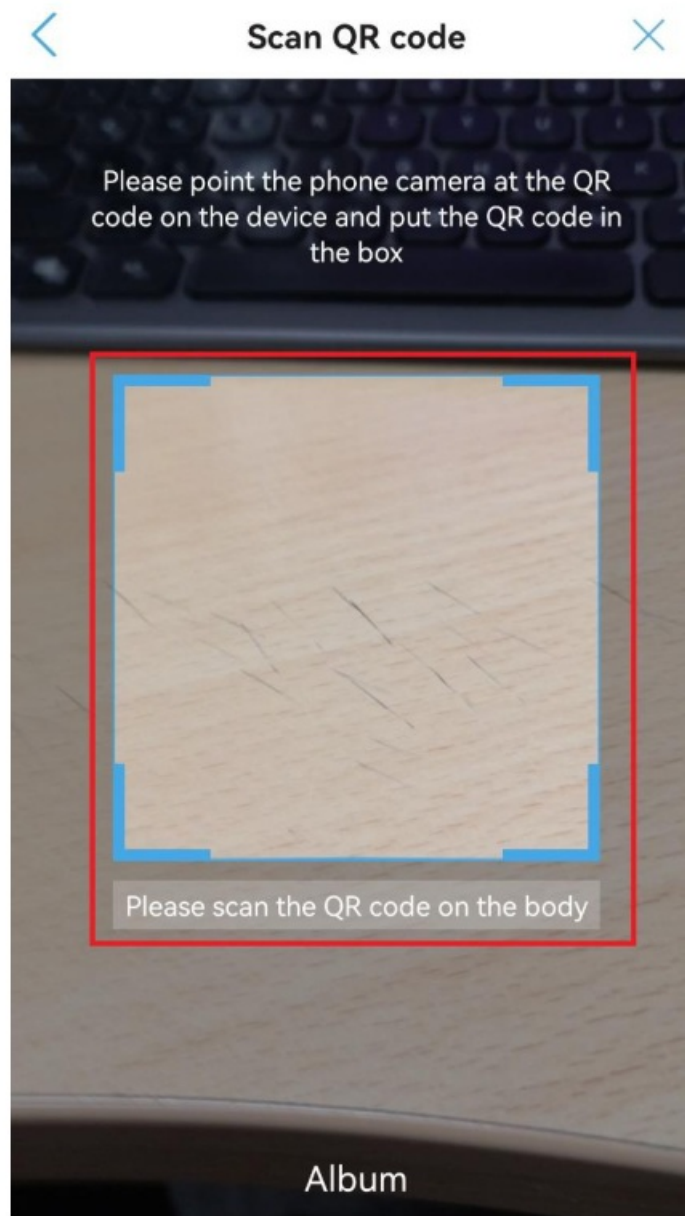
3. In the next step choose “Device in use”:



4. Select an option "Scan QR code":



5. Scan QR code from user who shares camera using CamHiPro application:



6. Camera shared to the new user successfully



ul. J. K. Branickiego 31A 15-085 Białystok

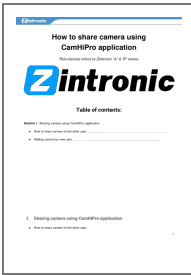


+48 (85) 677 70 55



biuro@zintronic.pl

Documents / Resources



[Zintronic Sharing Camera Using CamHiPro Application](#) [pdf] Instructions
Sharing Camera Using CamHiPro Application, Sharing Camera