



# Zintronic IP Cameras BitVision Application User Manual

[Home](#) » [Zintronic](#) » Zintronic IP Cameras BitVision Application User Manual 



This manual applies to Zintronic IP cameras supported by the BitVision application. The latest version of the manual is available for download at: [www.zintronic.com](http://www.zintronic.com)

## Contents

- 1 Introduction
- 2 Searching for cameras on the LAN
- 3 Adding a camera to the BitVision application
- 4 Installing the IVMS320 program
- 5 Setting the time on the camera
- 6 Setting up the SD card and enabling recording
- 7 Playing back recordings on a computer
- 8 Recording and playing back recordings on your phone
- 9 Enabling notifications to FTP server
- 10 Enabling notifications to E-mail
- 11 Enabling motion detection/character detection options
- 12 Sharing the camera with another user
- 13 Questions and answers
- 14 Documents / Resources
  - 14.1 References
- 15 Related Posts

## Introduction

Thank you for choosing Zintronic cameras, which, by using the latest technology, provide high quality images for CCTV monitoring. In this user's manual you will find full instructions for the cameras and their dedicated programs and applications.

### Product safety precautions

1. Use an appropriate power source.

The input voltage of the cameras is 12V DC/1A (power socket) or 48-52V DC (LAN cable). Be sure to connect the camera to an appropriate power source. Improper connection of the camera risks failure or damage to the camera.
2. Handle the camera carefully.

Use the camera according to the instructions. Avoid hitting the camera, shaking it, etc. Improper handling or storage of the camera may damage it.
3. The use of storage media – SD card.

Use only memory cards recommended for use with cameras or others with a minimum speed class of 10. Using other cards may lead to irregularities in the recording of material on the memory card.
4. Protection from weathering.

The camera's connection wires should be protected from the elements, i.e. rain, snow or moisture, by using the recommended distance brackets. Improper protection may lead to permanent damage to the equipment and loss of service warranty.
5. Camera operating environment.

The cameras are designed for use in environments with temperatures between -20°C-+60°C and humidity of 10%-90%.
6. Do not use strong or abrasive cleaners to clean the camera body.

If the camera is dirty, clean it with a damp cloth. If the dirt is resistant, use a mild detergent and gently wipe the camera.
7. Do not point the camera towards the sun.

Do not point the camera at the sun or other sources of very bright light. This risks the appearance of spots, even if the camera is turned off, and subsequent damage to the matrix.

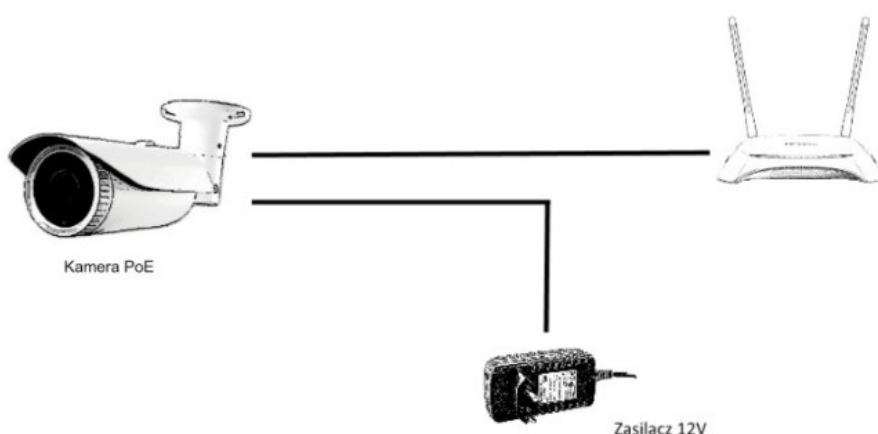
8. Do not place the camera in areas of interference.

If the camera is installed near devices that emit strong electromagnetic fields, such as wireless communication devices, it may lead to the occurrence of some irregularities in the camera's operation.

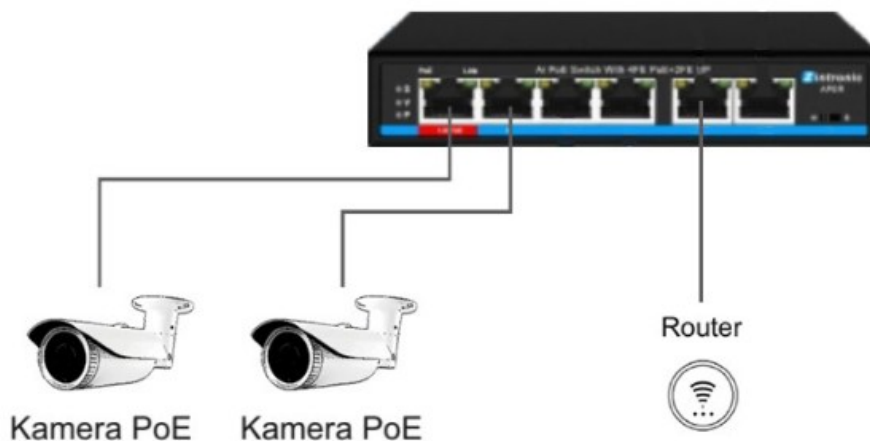
### Powering the Camera

Use a suitable 12V DC/1A power supply and connect it to the camera's power plug or with a LAN cable to a 48-52V DC PoE switch/power supply. Then connect the camera/switch to the Internet as shown in the graphic below. Wait a few minutes for the camera to boot up.

#### Method 1:



#### Method 2:



### Restore the camera to factory settings

The option to restore the camera to factory settings is possible if the camera has a reset button (on the wiring harness or next to the SD card slot). Press and hold the reset button for 5-15 seconds. The camera will reboot with factory settings.

### SD card mounting (selected models)

How to install the SD card is described in the separate instructions included in the box or available for download on the website [www.zintronic.com](http://www.zintronic.com)

### Searching for cameras on the LAN

The main function of the "SearchTool" program is to search for a camera on the LAN. The program also allows you to modify the IP address of the camera, in order to adapt the addressing to the needs of the local network. Download the „Search Tool” program available at website <https://zintronic.com/technical-support> in the

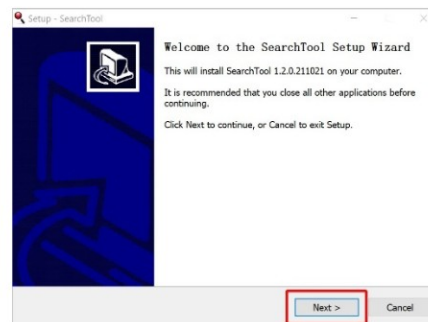
dedicated software section

| Dedykowane oprogramowanie  |   |  |
|--|---|--|
| Oprogramowanie   | Windows   | MAC  |
| <br>IVMS320 - aplikacja do obsługi kamer kamer                          | <br>V22.1.16.230316_R1 | <br>V22.1.5.221027_R4 |
| <br>SearchTool - aplikacja do wyszukiwania i konfiguracji kamer w sieci | <br>V1.5.1.230221_R1   | <br>1.3.0.220121_R2   |

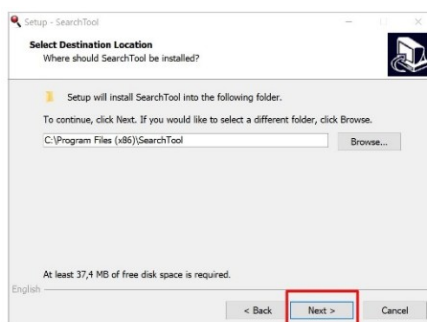
After downloading the file, the installation window will start. Follow the windows below to install the program.



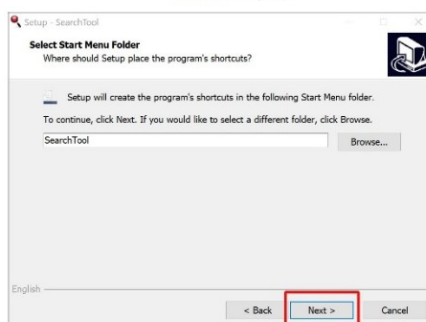
Select the language and click OK.



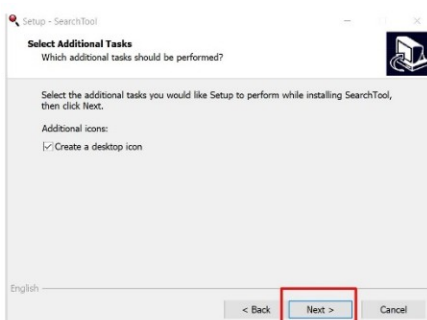
Click Next.



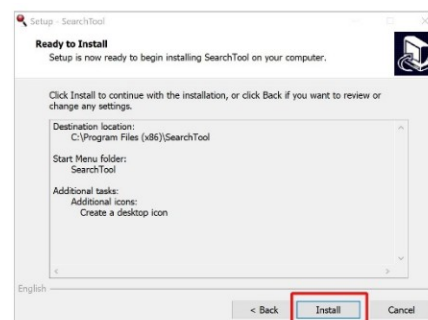
Click Next.



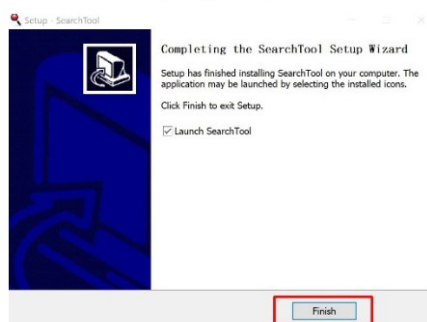
Click Next.



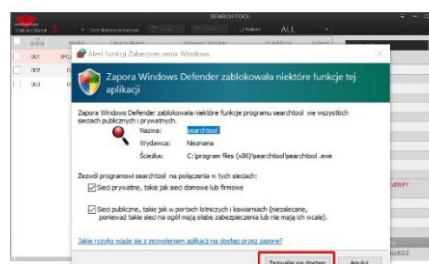
Click Next.



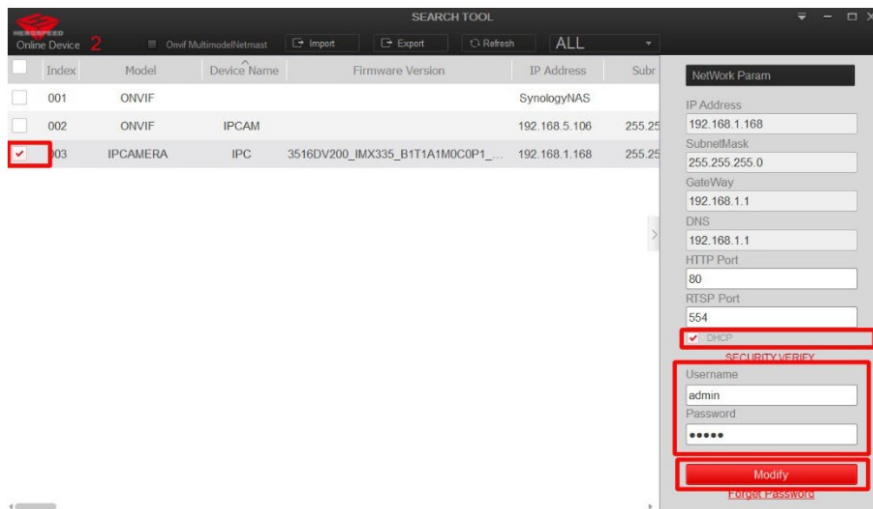
Click Install.



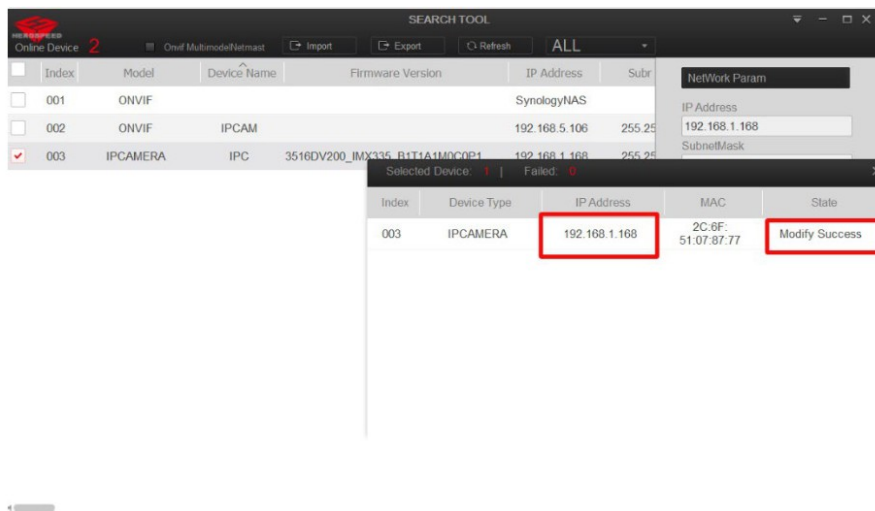
Click Finish.



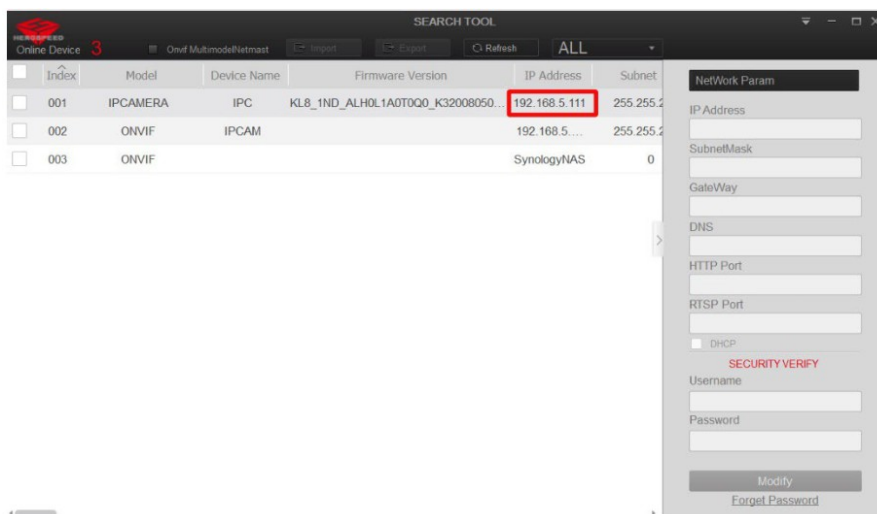
Check the required consents and click Allow access.



After launching, the program finds the camera with the factory IP address. Check the above options to make the camera get the address from the local network.



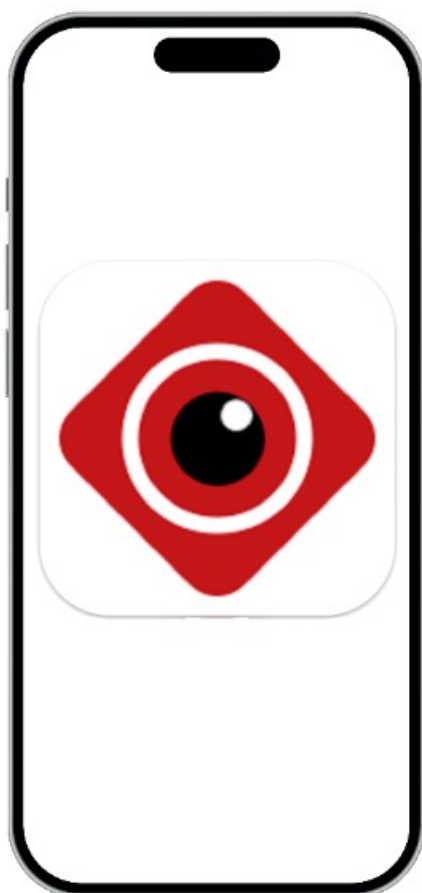
The network parameters have been changed correctly in the camera.



Now we can open the camera menu in a web browser by typing its IP address.

Installing the BitVision application

Download the BitVision app from the Google Play/Apple Store, alternatively scan the QR code below to download the app.



<https://play.google.com/store/apps/details?id=com.gzch.lsplat.lsbvtvapp&hl=pl&gl=US>



<https://apps.apple.com/pl/app/bitvision/id1419463554?l=pl>



Start up your phone



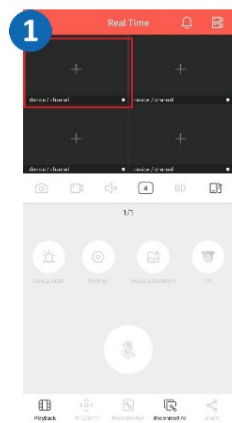
Scan QR code



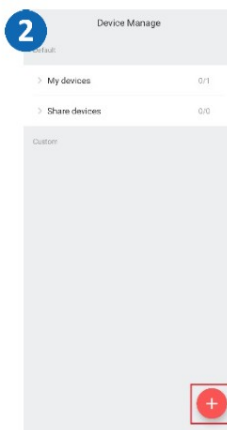
Download BitVision

## Adding a camera to the BitVision application

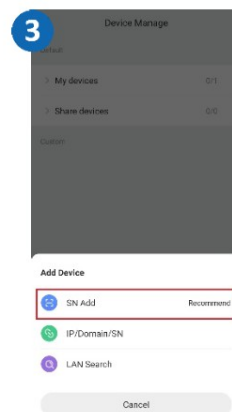
Open the BitVision application, write down the CAPTCHA code from the sticker on the camera or box, find the QR code from the SN and follow the steps:



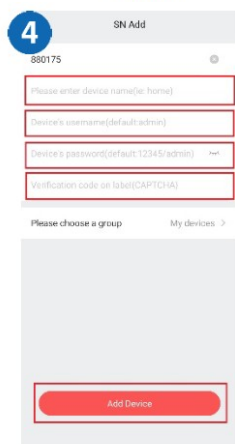
Click on the checked box or icon in the upper right corner.



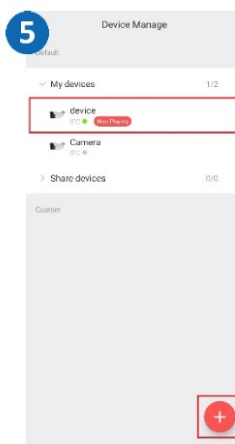
Click [+]



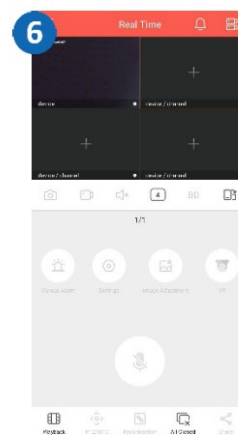
Click SN Add and scan the QR code from the camera.



Fill in the fields above.



Click [+]



The camera has been successfully added.

## Installing the IVMS320 program

The IVMS32 program is designed for recordings management, live viewing, as well as camera configuration and user management.

Download the Search Tool program available at <https://zintronic.com/technical-support> in the dedicated software section

| Dedykowane oprogramowanie  |   |  |
|--|---|--|
| Oprogramowanie   | Windows   | MAC  |
| <br><b>IVMS320</b> - aplikacja do obsługi kamer kamer                           | <br>V22.1.16.230316_R1 | <br>V22.1.5.221027_R4 |
| <br><b>SearchTool</b> - aplikacja do wyszukiwania i konfiguracji kamer w sieci. | <br>V1.5.1.230221_R1   | <br>1.3.0.220121_R2   |

Once the file is downloaded, the Windows Security Tool will launch





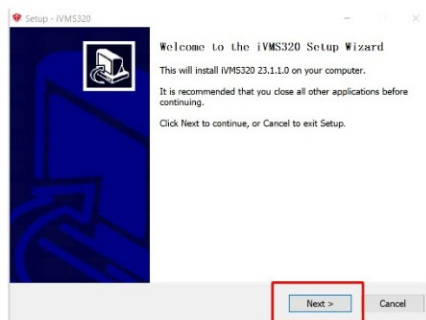
Click More Information.



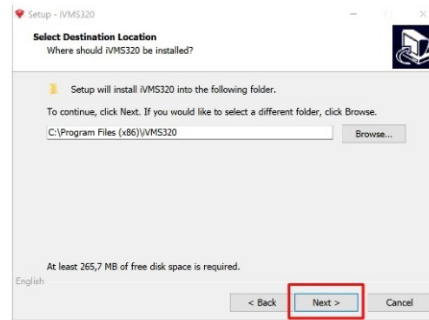
Click Run nonetheless.



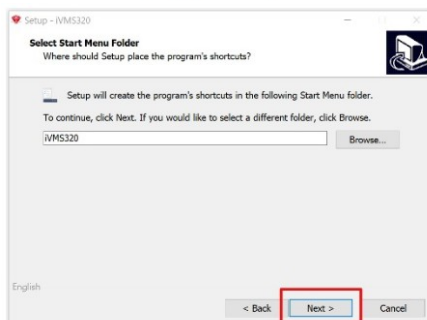
Select the language and click OK.



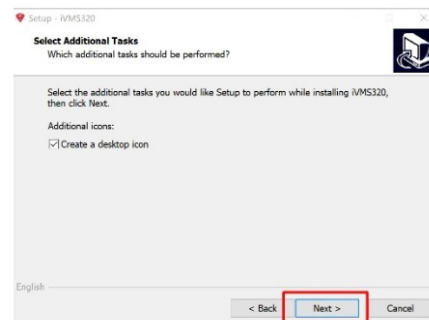
Click Next.



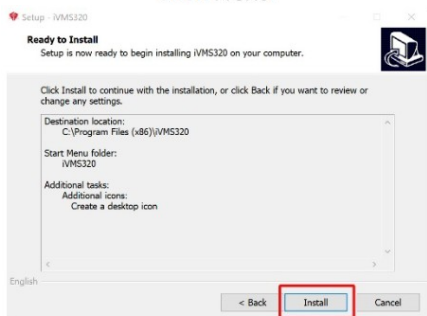
Click Next.



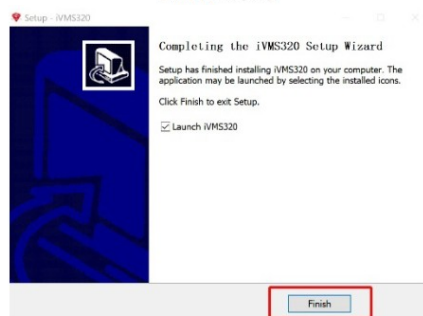
Click Next.



Click Next.



Click Install.



Click Finish.



polski(Polska) x

# iVMS320

Nazwa użytkownika

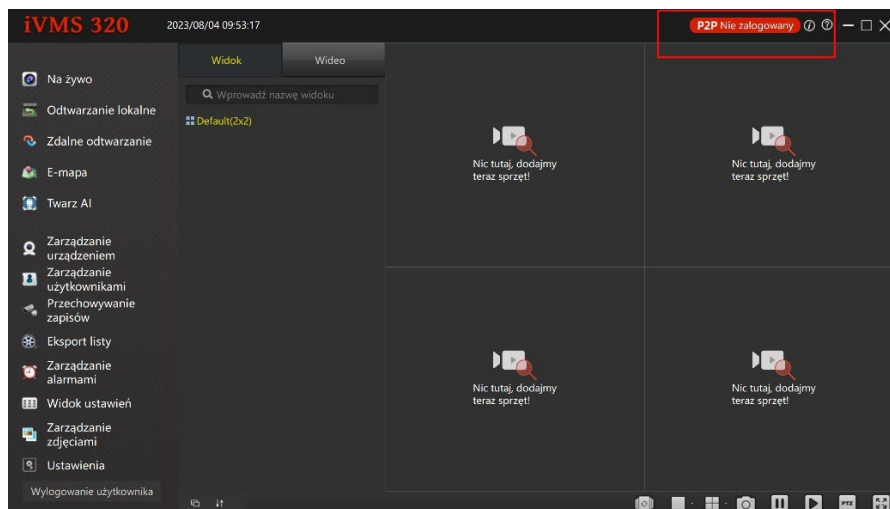
Hasło

Powtórz hasło

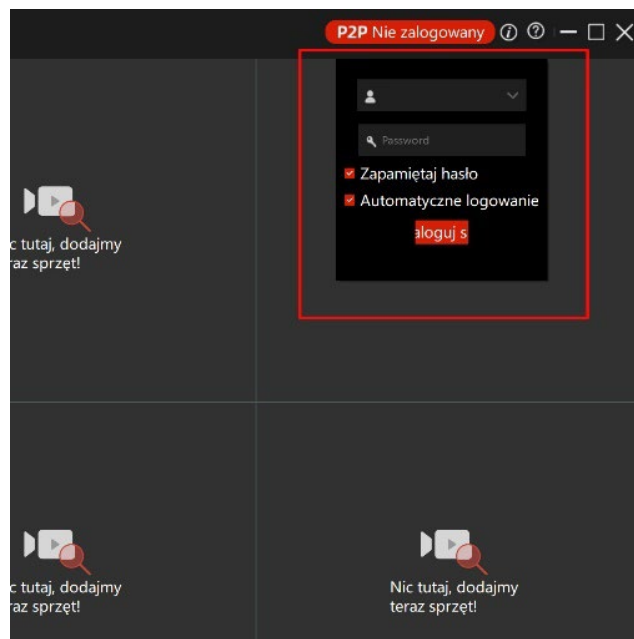
Połącz

The first login of this system, please add a super user.

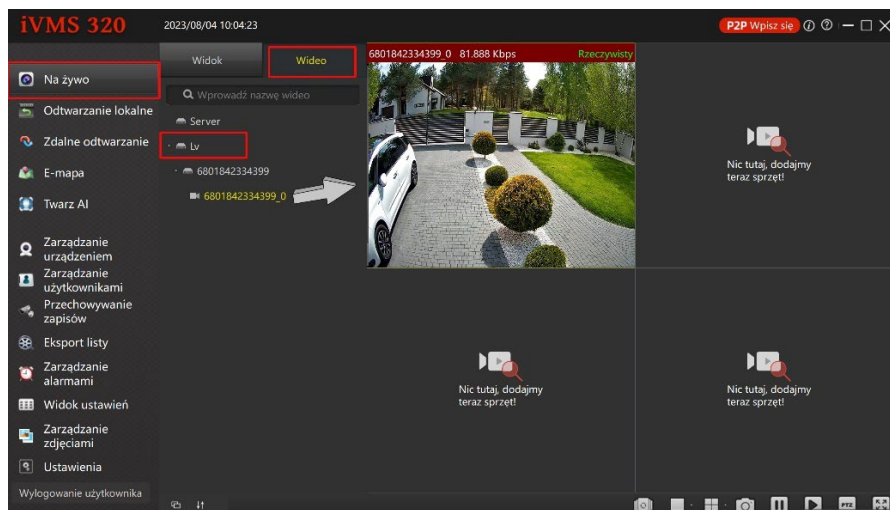
Create an account in iVMS320 and log into it.



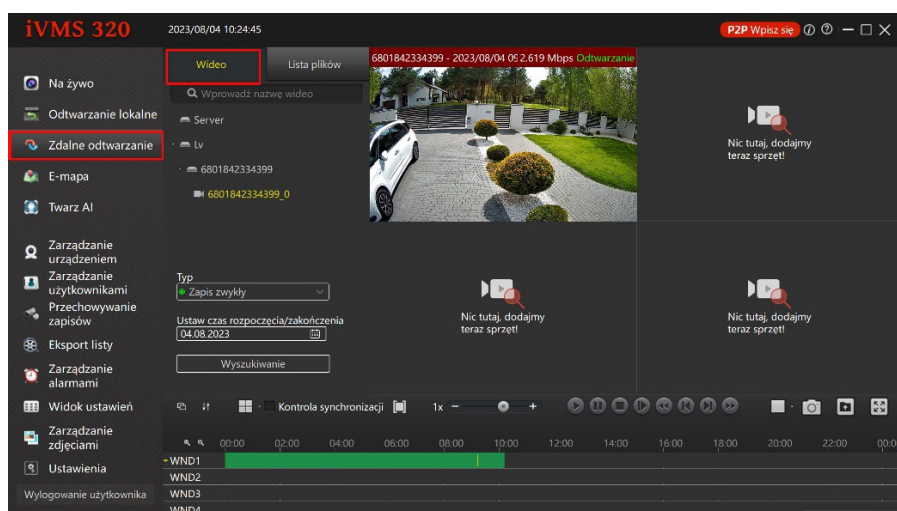
Click on the highlighted option.



Enter your BitVision account login information and click Login.



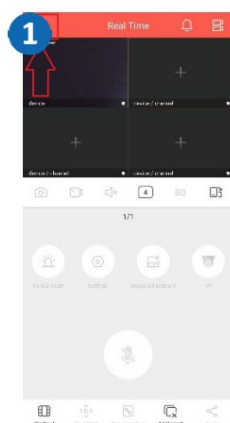
Go to the Live tab, and then under the Video tab, expand the Lv option. Drag the camera serial number to preview.



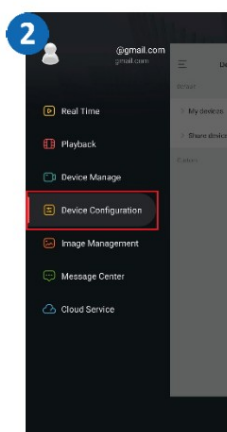
Go to the Remote playback -> Video tab. Here you can manage your recordings.

## Setting the time on the camera

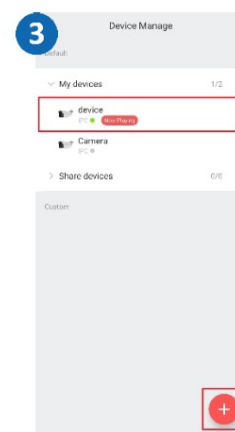
Configuration using the BitVison application



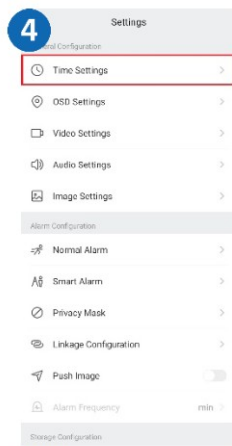
Click the menu in the upper left corner.



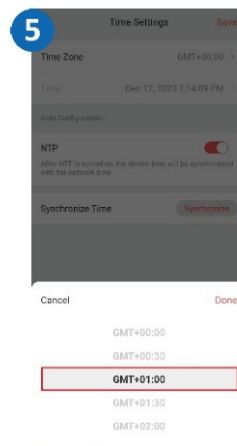
Click Device Configuration.



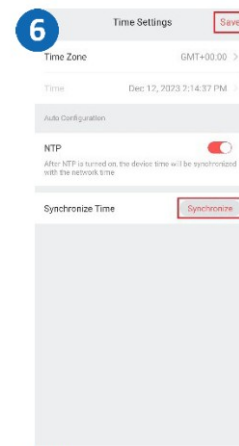
Expand My Devices and select your camera



Click **Time Settings**.

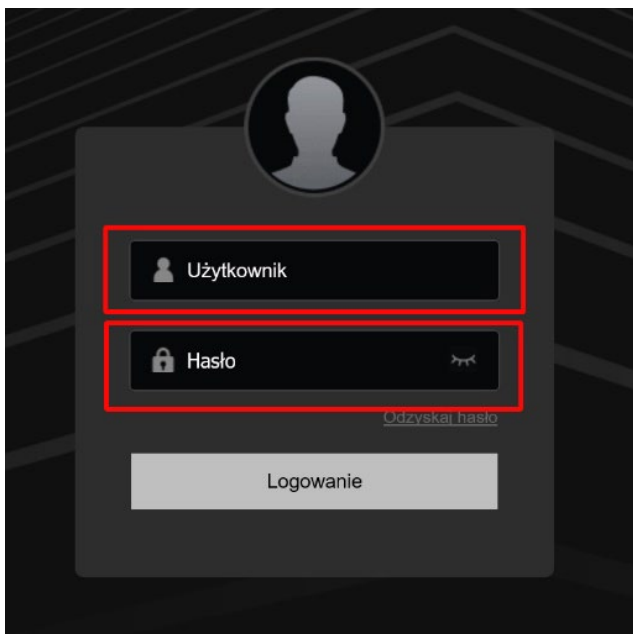


Select the appropriate time zone.

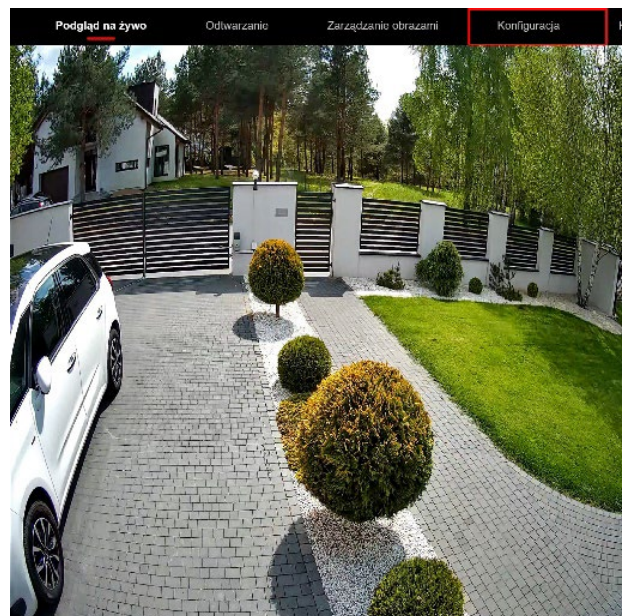


Click **Synchronize** and **Save** the changes.

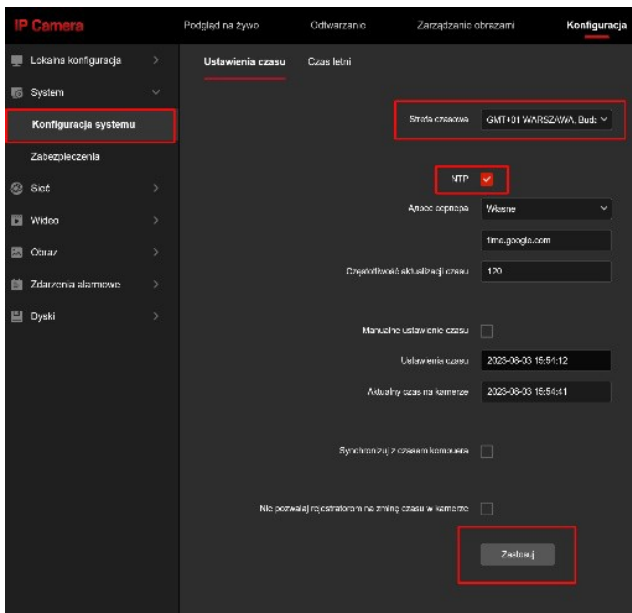
Configuration using a web browser



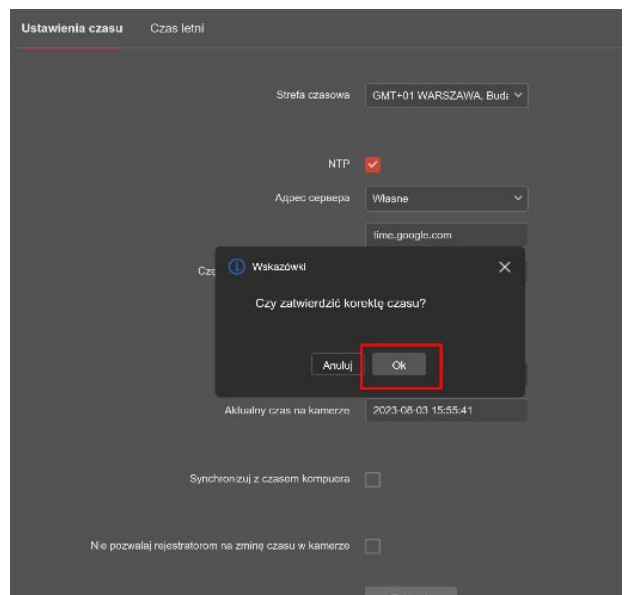
Enter login credentials, default:  
User: admin  
Password: admin



Click the Configuration.



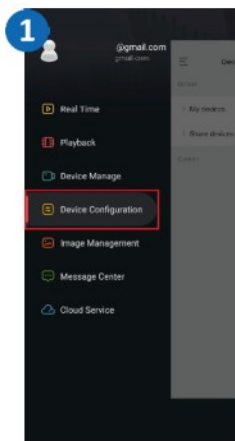
System Configuration select the above options and click Apply.



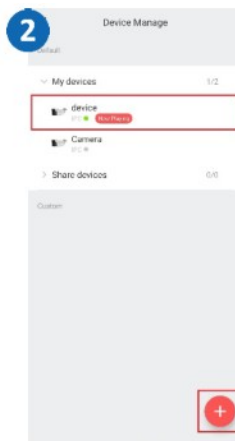
Click OK. to approve the changes.

## Setting up the SD card and enabling recording

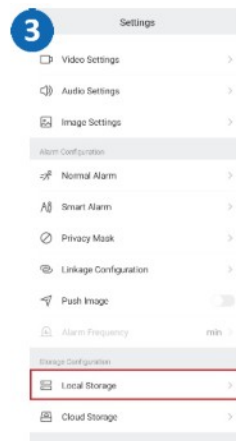
Configuration using the BitVision application



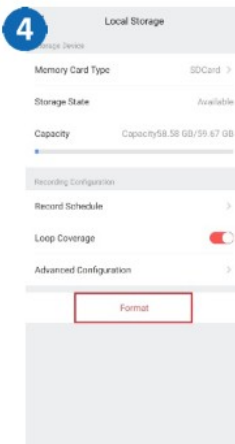
Click **Configuration**



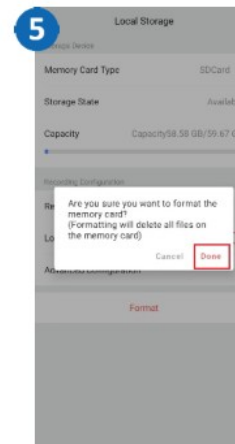
Expand the tab and click on the camera.



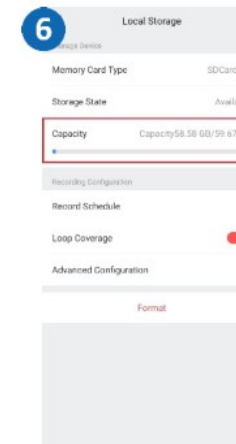
Click **Local Memory**.



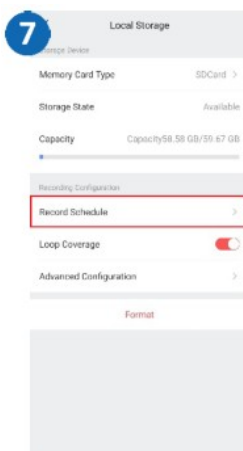
Click **Format**.



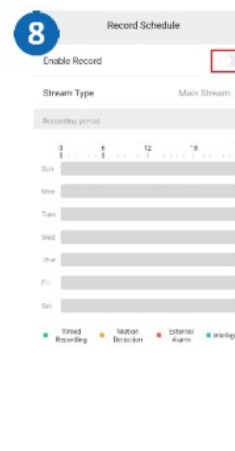
Click **Confirm**.



The card has been formatted.



Click **Recording Schedule**.



Move the slider.



Recording has been enabled.

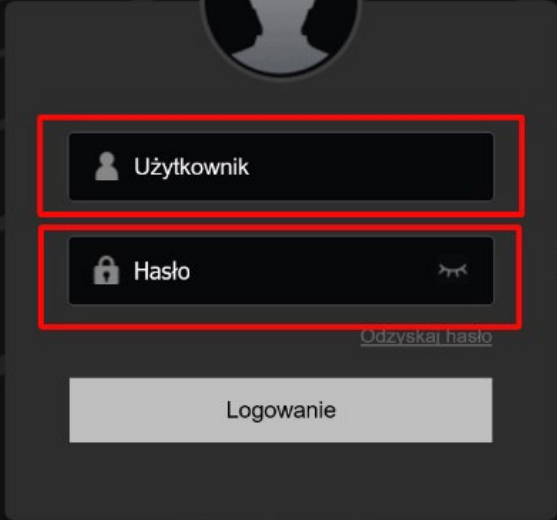
## Configuration using a web browser

Log in to the camera using its IP address to your browser.

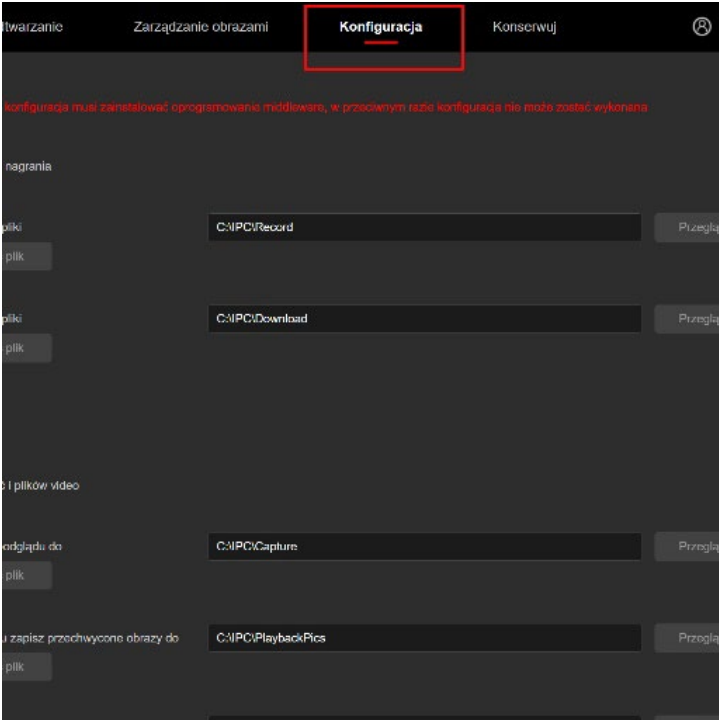
Enter login credentials, default:

User: admin

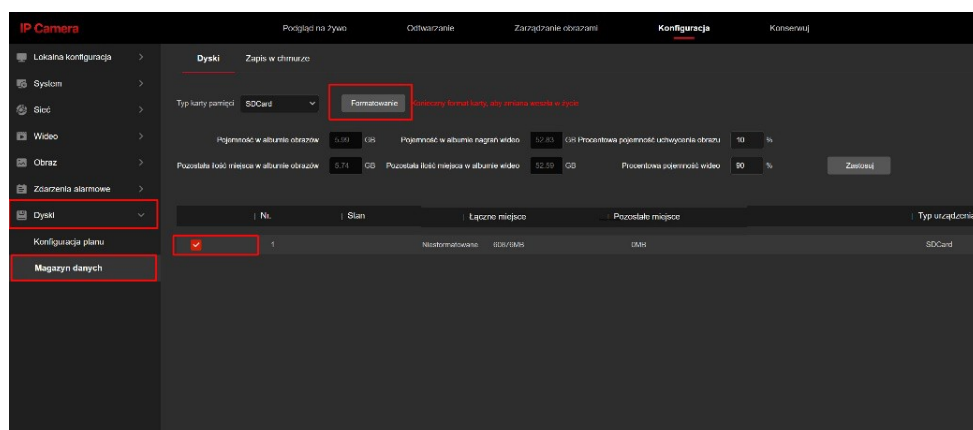
Password: admin



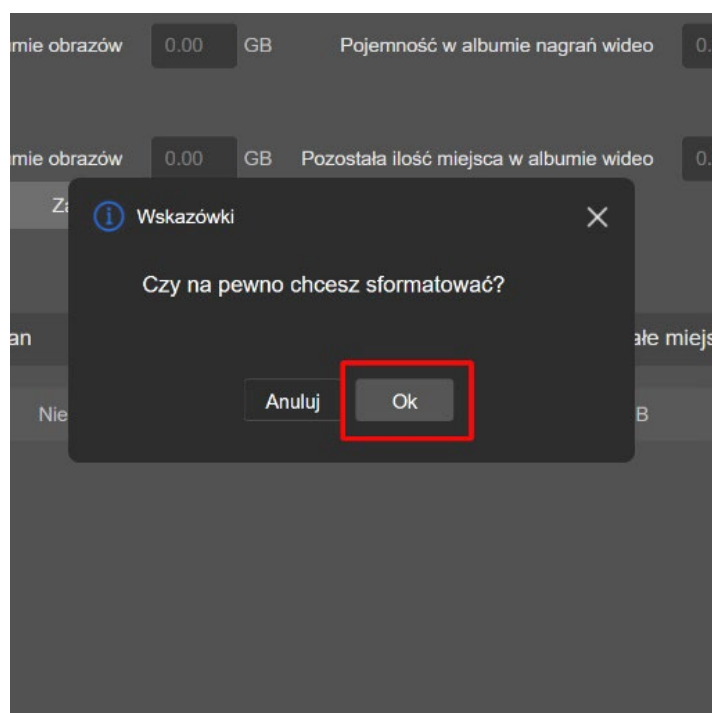
Click the tab Configuration.



Go to the Drives-> Data storage tab,  
Select the above options and click Format.

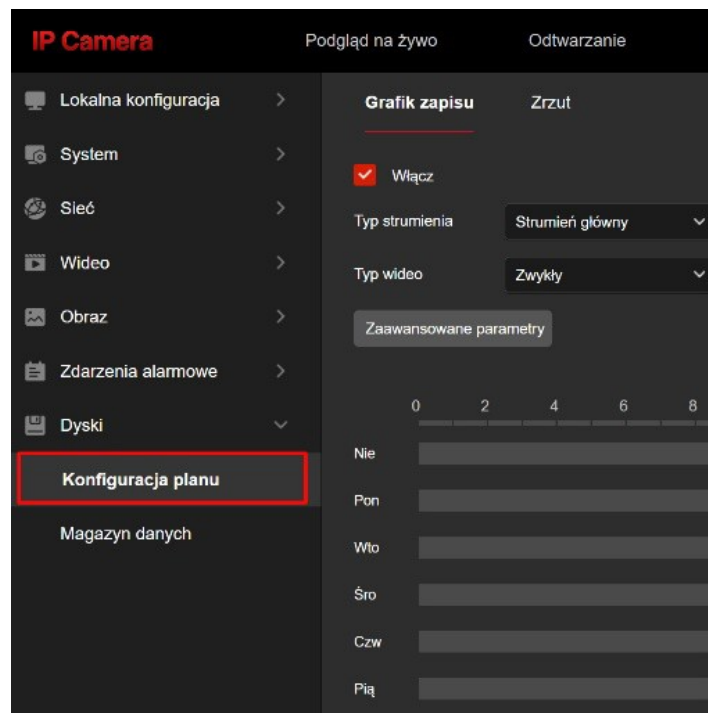


Confirm the changes with the OK button. The card has been formatted.

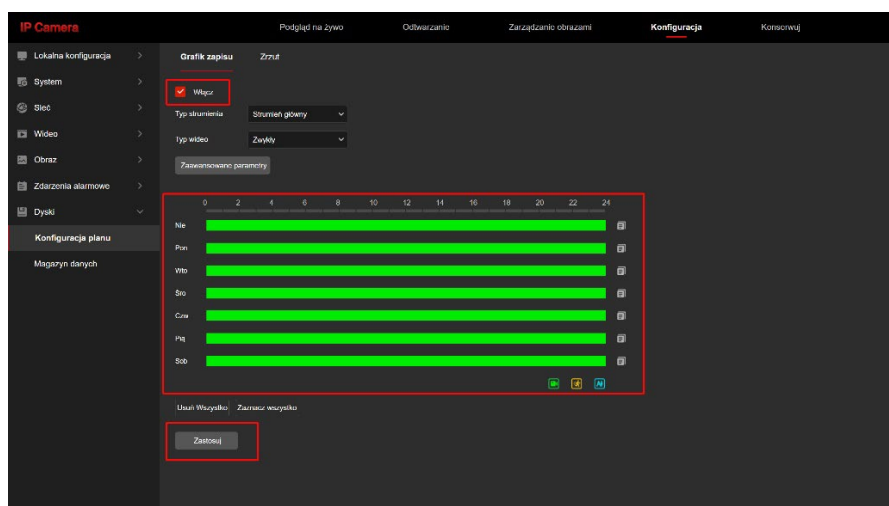


Go to the tab Plan Configuration.

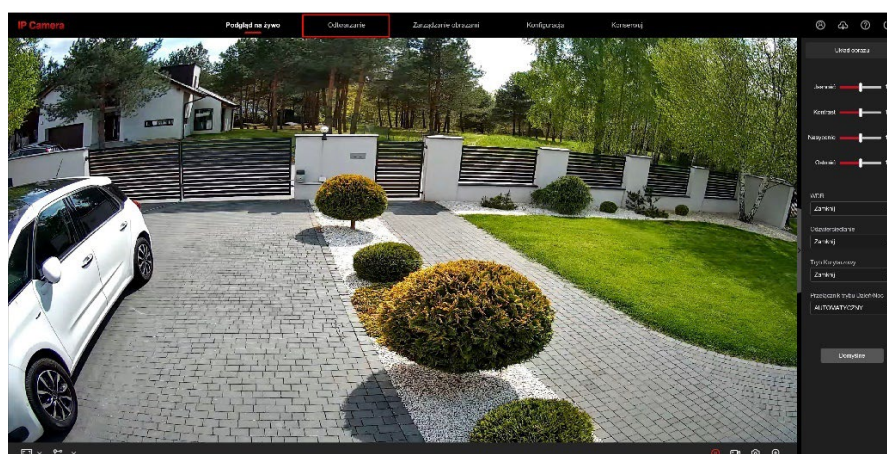




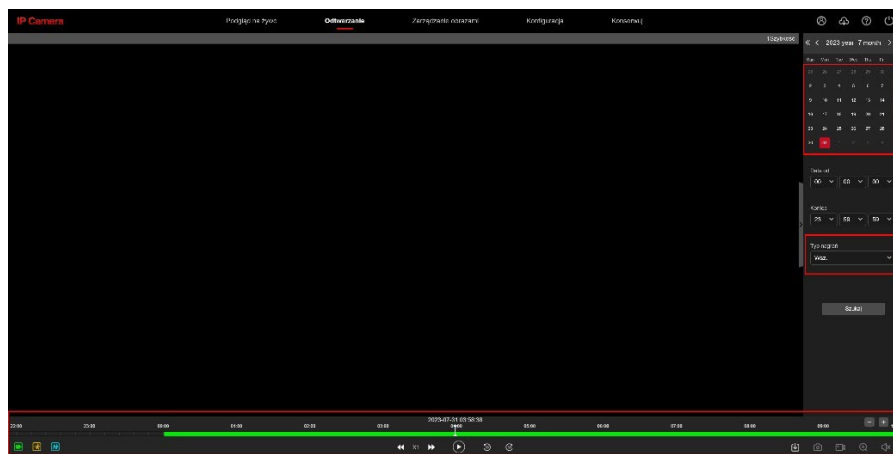
Select the above options and set the recording schedule and click Apply.



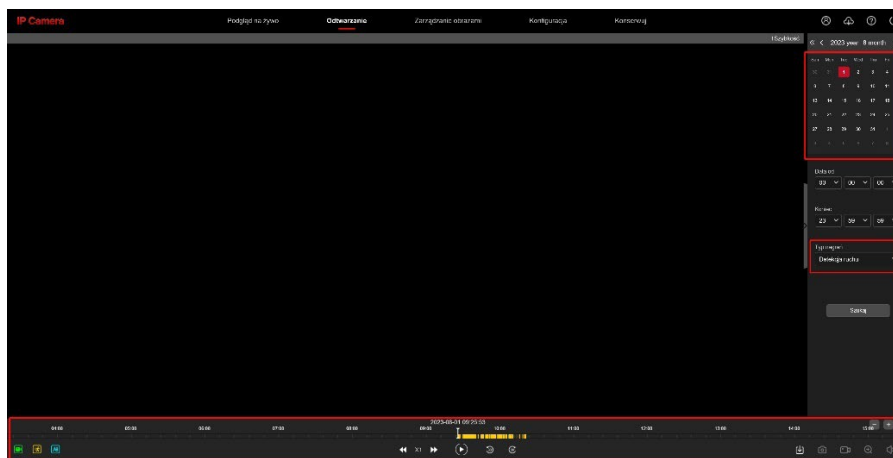
## Playing back recordings on a computer



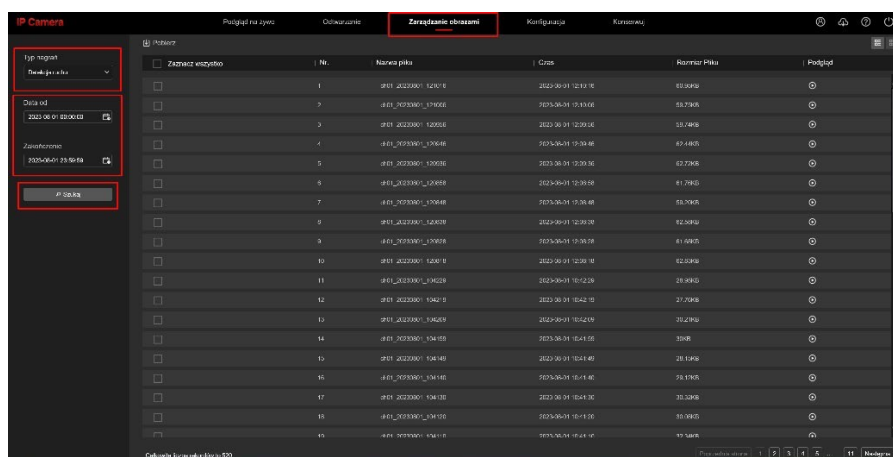
Log in to the camera using its IP address into your browser and go to the Playback tab.



Select the appropriate time and type of recordings. You can play the selected continuous recordings at the bottom of the screen.

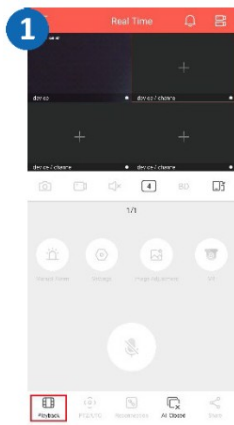


Select the appropriate time and type of recordings. At the bottom of the screen, we can play the selected alarm recordings.

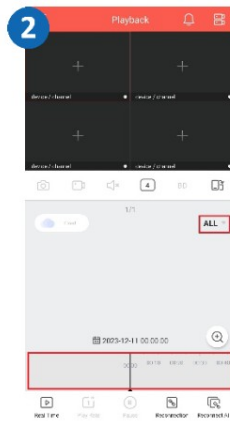


We can also view the recorded alarm images in the Image Management tab. In the left panel, select the type of recordings, date and click Search. Play the images by selecting the selected file and clicking Play.

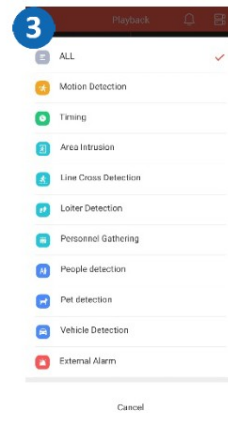
## Recording and playing back recordings on your phone



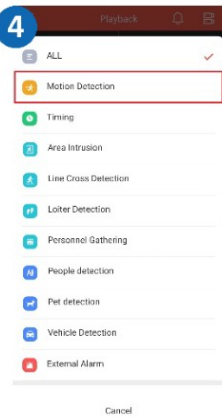
On the start screen, click **Play**.



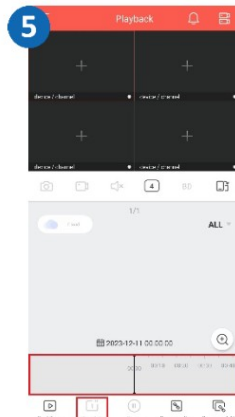
The camera will show continuous events.



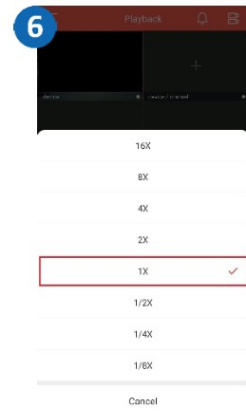
After clicking **All**, we can select alarm events.



Select the **Motion Detection** option.

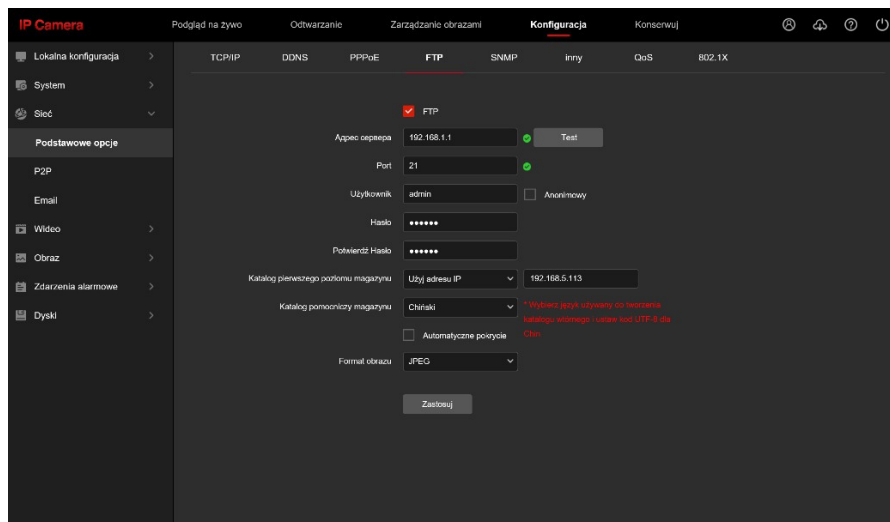


Below we have access to alarm events.

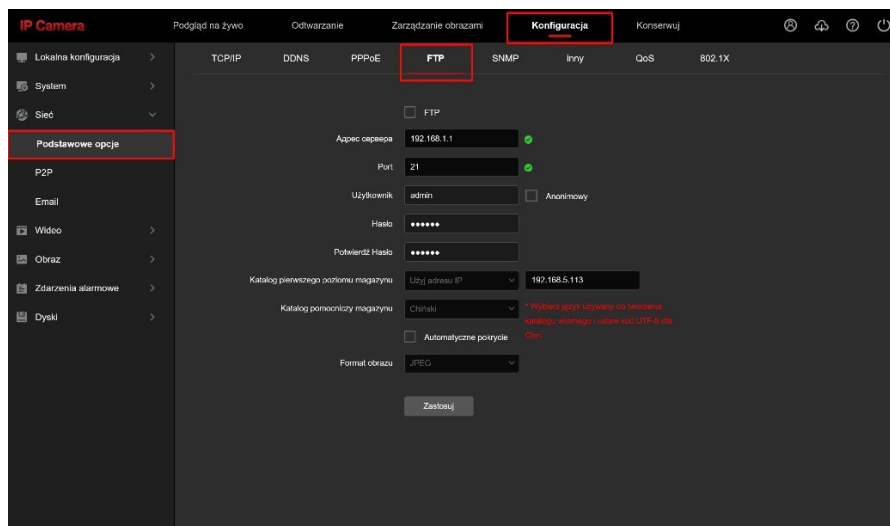


In the **Speed** tab, we can also set the playback speed.

## Enabling notifications to FTP server



Log in to the camera using its IP address into your browser and go to Configuration -> Basic Options, FTP tab.

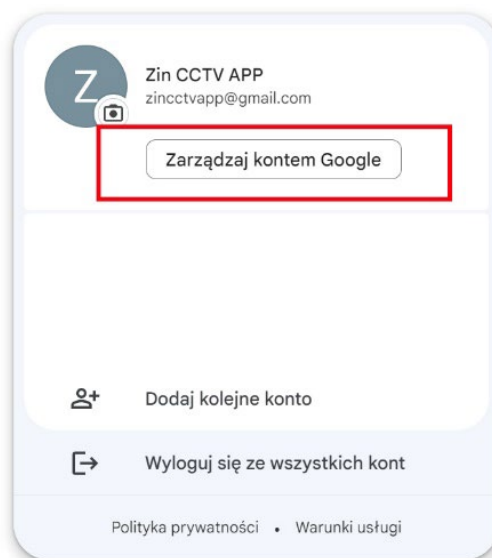


Next, select the FTP option and enter your FTP server details and click Apply.

## Enabling notifications to E-mail

### Setting up an email account

Open an Internet Browser, log in to your Gmail.



Click Manage Google Account.



Strona główna



Dane osobowe



Dane i prywatność



Bezpieczeństwo



Osoby i udostępnianie



Płatności i subskrypcje



Informacje

Go to the Security tab.

## Sposób logowania się w Google

Dbaj o aktualność tych informacji, aby zawsze mieć dostęp do konta Google

🔒 Weryfikacja dwuetapowa ✅ Włączono: 3 wrz 2020

🔑 Hasło Ostatnia zmiana: 18 kwi

📄 Potwierdzenie od Google 1 urządzenie

☎️ Telefony do weryfikacji dwuetapowej

📞 Pomocniczy numer telefonu

✉️ Pomocniczy adres e-mail 🔔 Wymagana aktualizacja

Możesz dodać więcej opcji logowania

🔑 Klucze bezpieczeństwa Authenticator Zapasowe numery telefonów na potr.

## Twoje urządzenia

Urządzenia, na których jesteś zalogowany(a)

🖥️ 1 sesja na komputerze z systemem Windows Windows

Enable Two-Step Verification, follow the on-screen instructions.

Za pomocą aplikacji uwierzytelniającej możesz bezpłatnie odbierać kody weryfikacyjne nawet wtedy, gdy Twój telefon nie ma połączenia z internetem. Aplikacja jest dostępna w wersji na Androida i iPhone'a.

**Klucz bezpieczeństwa**

Klucz bezpieczeństwa to metoda weryfikacji, która umożliwia bezpieczne logowanie się na konto. Może on być wbudowany w telefonie lub może używać Bluetootha albo wymagać bezpośredniego podłączenia do portu USB komputera.

Urządzenia, które nie wymagają drugiego etapu

Na zaufanych urządzeniach, takich jak Twój własny komputer, możesz pomijać drugi etap.

**Zaufane urządzenia**

Usuń z listy zaufanych te urządzenia, na których nie korzystasz z weryfikacji dwuetapowej.

[USUŃ WSZYSTKIE](#)

**Hasła do aplikacji**

Hasła do aplikacji nie są zalecane i w większości przypadków są niepotrzebne. Aby chronić swoje konto Google, łącz je z aplikacjami za pomocą funkcji „Zaloguj się przez Google”.

**Hasła do aplikacji**

Brak

Click Application passwords to generate a login password

Nie masz haseł do aplikacji.

Wybierz aplikację i urządzenie, do których chcesz utworzyć nowe hasło.

Wybierz aplikację

- Poczta
- Kalendarz
- Kontakty
- YouTube
- Inna opcja (własna nazwa)

Wybierz urządzenie

WYGENERUJ

Click select application and then select Other Option.

← **Hasła do aplikacji**

Hasło do aplikacji służy do logowania się na konto Google z poziomu aplikacji na urządzeniach, które nie obsługują weryfikacji dwuetapowej. Nie musisz go zapamiętywać – wystarczy, że podasz je tylko raz. Więcej informacji

Nie masz haseł do aplikacji.

Wybierz aplikację i urządzenie, do których chcesz utworzyć nowe hasło.

Kamera

WYGENERUJ

Give a name to the access method you are creating, such as Camera, and click Generate.

| Nazwa   | Utworzono | Ostatnio użyto |
|---|-----------|----------------|
| <h3>Wygenerowane hasło do aplikacji</h3> <div> <div> Email<br/> <input type="text" value="securesally@gmail.com"/> </div> <div> Password<br/> <input type="password" value="••••••••"/> </div> </div> <div> <p><b>Twoje hasło do aplikacji (urządzenie)</b></p> <p><b>onhk kvna vphf ldyu</b></p> <p><b>Sposób korzystania</b></p> <p>Otwórz ustawienia konta Google w aplikacji lub na urządzeniu, które konfigurujesz. Zastąp swoje hasło powyższym hasłem złożonym z 16 znaków.</p> <p>Hasło aplikacji, tak jak Twoje zwykłe hasło, daje pełny dostęp do konta Google. Nie musisz go zapamiętywać, więc nie zapisuj go ani nie udostępniaj nikomu.</p> <p><b>GOTOWE</b></p> </div> |           |                |

Rewrite a random password without spaces and click Done.

## ← Hasła do aplikacji

Hasło do aplikacji służy do logowania się na konto Google z poziomu aplikacji na urządzeniach, które nie obsługują weryfikacji dwuetapowej. Nie musisz go zapamiętywać – wystarczy, że podasz je tylko raz. [Więcej informacji](#)

### Twoje hasła do aplikacji

| Nazwa  | Utworzono | Ostatnio użyto |
|--------|-----------|----------------|
| Kamera | 11:14     | –              |

Wybierz aplikację i urządzenie, do których chcesz utworzyć nowe hasło.

Wybierz aplikację ▼ Wybierz urządzenie ▼

WYGENERUJ

The generated password will appear in the list, you can delete it and generate a new one. Log in to the camera using its IP address into your browser and go to the Configuration tab.

IP Camera

Podgląd na żywo

Odtwarzanie

Zarządzanie obrazami

**Konfiguracja**

Konsola

Lokalna konfiguracja

System

**Sieć**

Podstawowe opcje

P2P

**Email**

Wideo

Obraz

Zdarzenia alarmowe

Dyski

Email Nadawcy: zincvapp@gmail.com  
Aspek: cspaspa  
Port: 25  
Wyślij email: MESSAGE  
Typ szyfrowania: Zaden  
Użytkownik: Zintronc  
Hasło: ••••••  
Pobierz2: Hasło: ••••••  
E-mail1: zincvapp@gmail.com Test  
E-mail2: Test  
E-mail3: Test

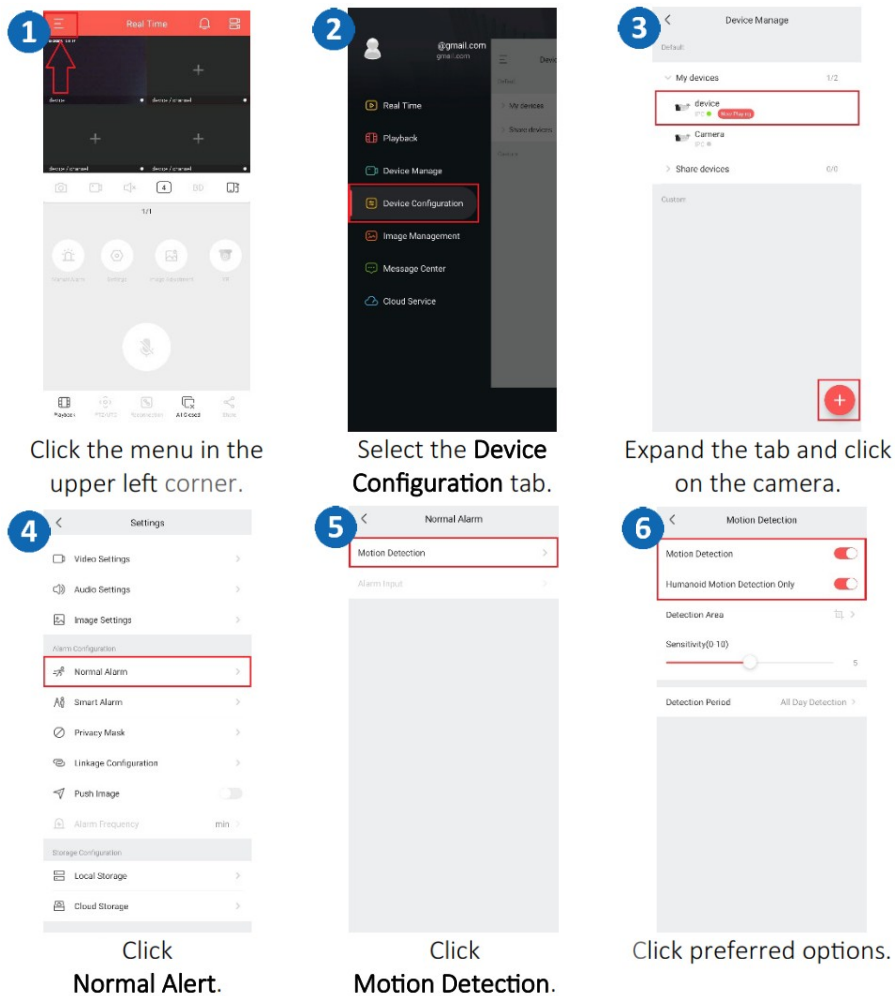
Zakończ



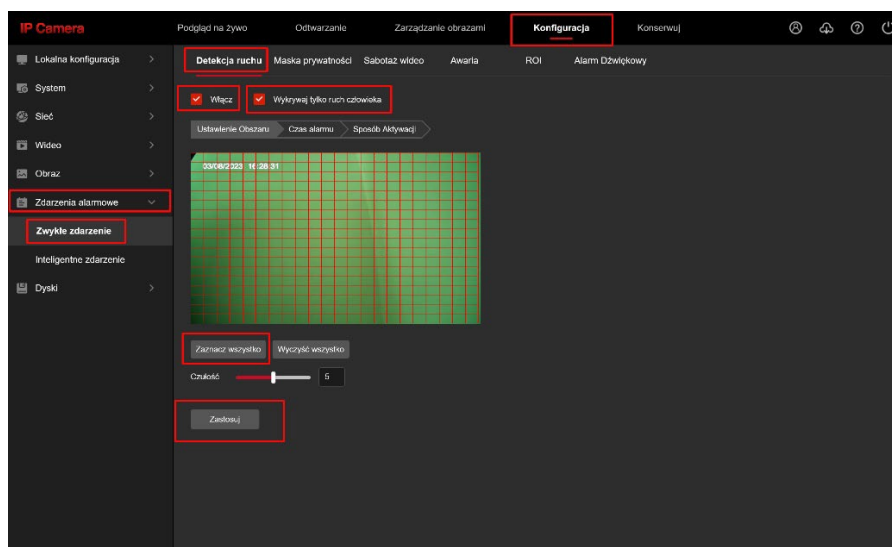
Under Configuration, select Network, then Email, fill in the fields provided and click Apply.

## Enabling motion detection/character detection options

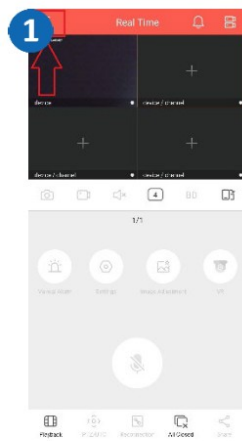
Configuraion using the BitVison application



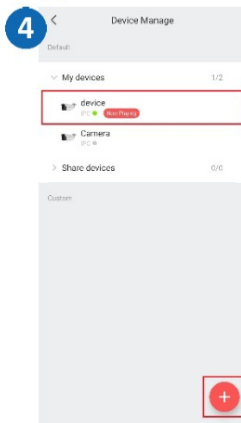
Configuration using a web browser



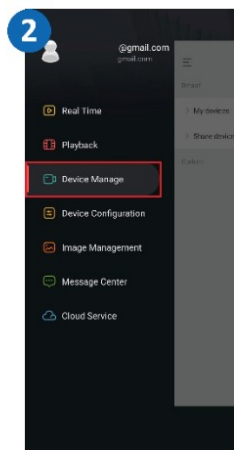
## Sharing the camera with another user



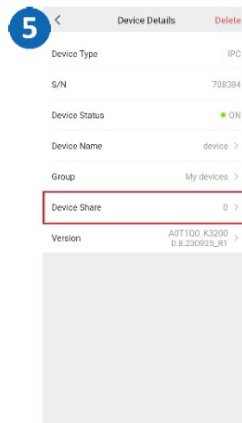
Expand the list in the upper left corner.



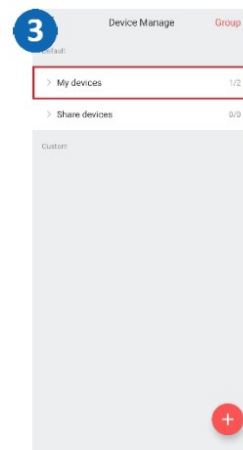
Click on the camera you want use.



Click the tab **Device Manage**.



Select **Device Sharing**.



Click **My Devices**.



Share the code with another person to add a camera.

## Questions and answers

Why is the device in offline mode?

Make sure that: - The device is properly connected to the power supply and to the Internet - The configuration has been done correctly.

The SD memory card cannot be read?

Check whether the SD card has been formatted, and whether it meets the quality requirements.

Camera disconnects.

Please check the power supply and internet network, then restart the camera. If this way does not work, please remove the device and add it again in the application.

Video interrupts or video runs slowly.

If the video keeps loading/boosting, check your internet connection.



How can other people watch the video?

Share the camera in the app with other people.

How many people can use the account at the same time?


Only one person can use the account and only share the device with other people.

All text, drawings, photos and all other information and media contained herein are subject to the copyright of Zintronic, 2 K. Modzelewskiego St., Białystok 15-535, Poland. NIP: 953-274-12-33 Any copying, distribution, electronic processing and transmission of the contents without permission of the company is prohibited.


 [support@zintronic.com](mailto:support@zintronic.com)  
 +48 (85) 677 70 55  
**ul. K. Modzelewskiego 2**  
**15-535 Białystok**

---

## Documents / Resources

|   |  |
|---|--|
|  | <a href="#">Zintronic IP Cameras BitVision Application</a> [pdf] User Manual<br>IP Cameras BitVision Application, IP Cameras, BitVision Application, Application |
|---|--|

## References

-  [Monitoring - Kamery do monitoringu :: ZINTRONIC.PL](#)
-  [Technical Support](#)
- [User Manual](#)

[Manuals+](#), [Privacy Policy](#)

This website is an independent publication and is neither affiliated with nor endorsed by any of the trademark owners. The "Bluetooth®" word mark and logos are registered trademarks owned by Bluetooth SIG, Inc. The "Wi-Fi®" word mark and logos are registered trademarks owned by the Wi-Fi Alliance. Any use of these marks on this website does not imply any affiliation with or endorsement.