

# Zintronic Configuration E-mail Notifications for A and P Series Camera Instructions

[Home](#) » [Zintronic](#) » Zintronic Configuration E-mail Notifications for A and P Series Camera Instructions 

## Contents

- [1 Zintronic Configuration E-mail Notifications for A and P Series Camera](#)
- [2 G mail account configuration](#)
- [3 Turning on e-mail notifications on camera](#)
- [4 Documents / Resources](#)
- [5 Related Posts](#)



**Zintronic Configuration E-mail Notifications for A and P Series Camera**

This account is managed by zintronic.pl. [Learn more](#)



@zintronic.pl

Manage your Google Account

+ Add another account

Sign out

[Privacy Policy](#) • [Terms of Service](#)

## G mail account configuration

### G mail security settings

1. Open Chrome browser.
2. Log in to your Gmail account.
3. In the top right corner click the icon of your account and go to Manage your Google Account.

This account is managed by zintronic.pl. [Learn more](#)



@zintronic.pl

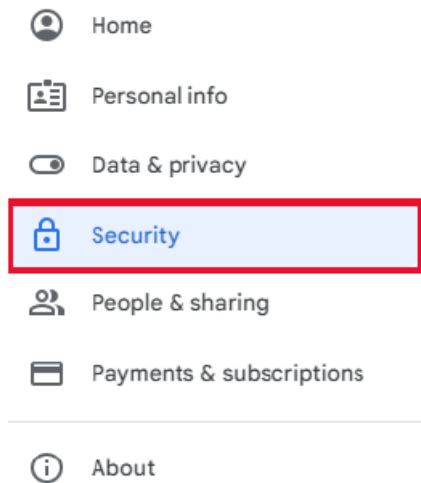
Manage your Google Account

+ Add another account

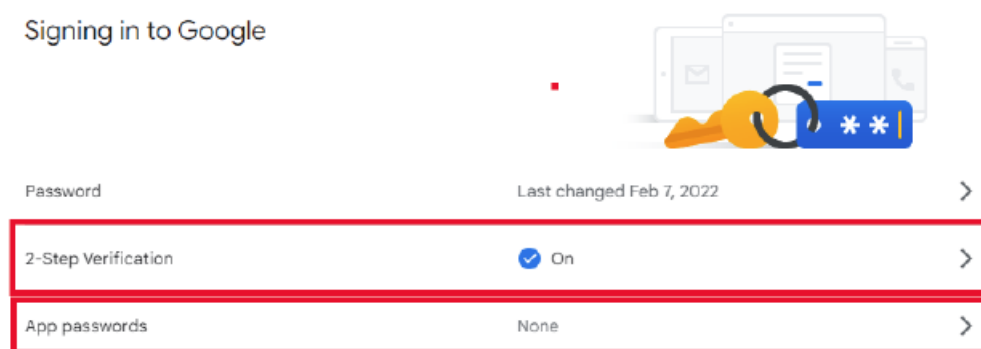
Sign out

[Privacy Policy](#) • [Terms of Service](#)

4. Go to Security.



5. Turn on 2 Step Verification.



### Getting G mail generated password for authenticat ion

1. Click App passwords to generate new password, which you will use during camera configuration. Gmail will ask you once again to log in, before it lets you create the new password.
2. Click Choose app then, other option.

#### ← Passwords for the application

The app password is used to sign in to your Google account from within the app on devices that do not support two-step verification. You do not need to remember it - you only need to enter it once. More information [More info](#)

You do not have passwords for applications.

Select the application and device for which you want to create a new password.

Choose app

▼

Choose device

▼

GENERATE

3. Name new a pplication on your own, for example: Camera/CCTV/Message. And click on “Generate”.

## ← Passwords for the application

The app password is used to sign in to your Google account from within the app on devices that do not support two-step verification. You do not need to remember it - you only need to enter it once. More information [More info](#)

You do not have passwords for applications.

Select the application and device for which you want to create a new password.

Camera

×

GENERATE

**Note:** After doing this password generated by google will show up. Write it down without, spaces and click 'OK'. Password will be shown only once, there is no way to get it to show again!

- Generated password will show up on your 2 step login, you can delete it, or generate new one in case you forgot the original one.

### Generated password for the application

Your application password (device)

vrpl owlq rulk oxqi

Method of use

Open your Google account settings in the app or on the device you are configuring. Replace your password with the above password of 16 characters. The app password, like your regular password, gives you full access to your Google account. You don't need to remember it, so don't save it or share it with anyone. The app's password, like your regular password, gives you full access to your Google account. You don't have to remember it, so don't save it or share it with anyone.

OK

Email

securesally@gmail.com

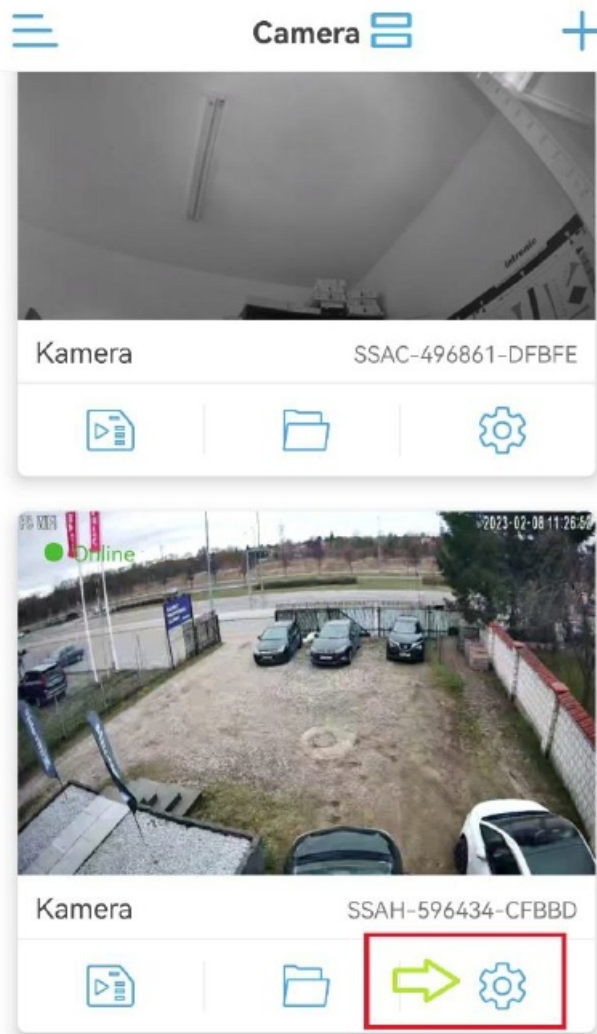
Password

••••••••••••••

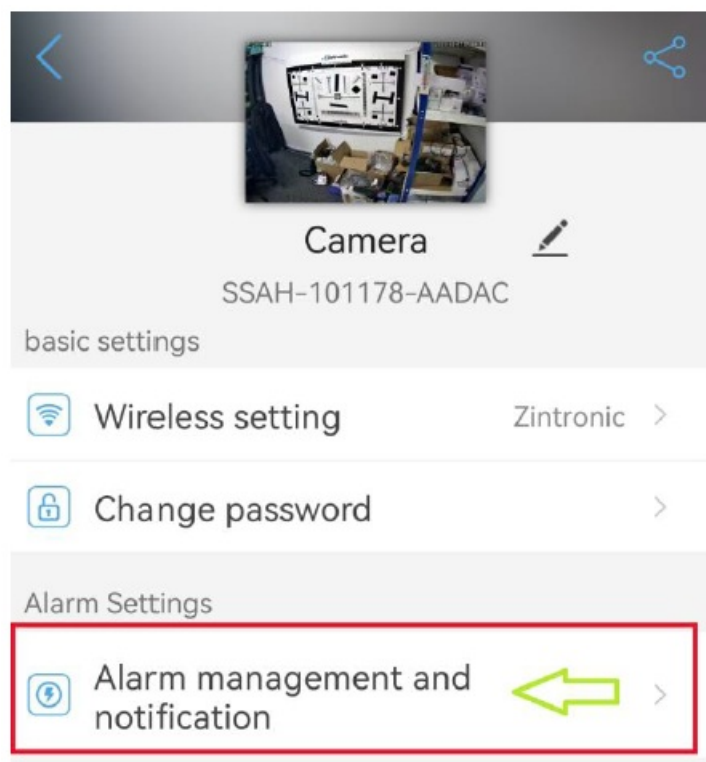
## Turning on e-mail notifications on camera

### Notifications via SMTP

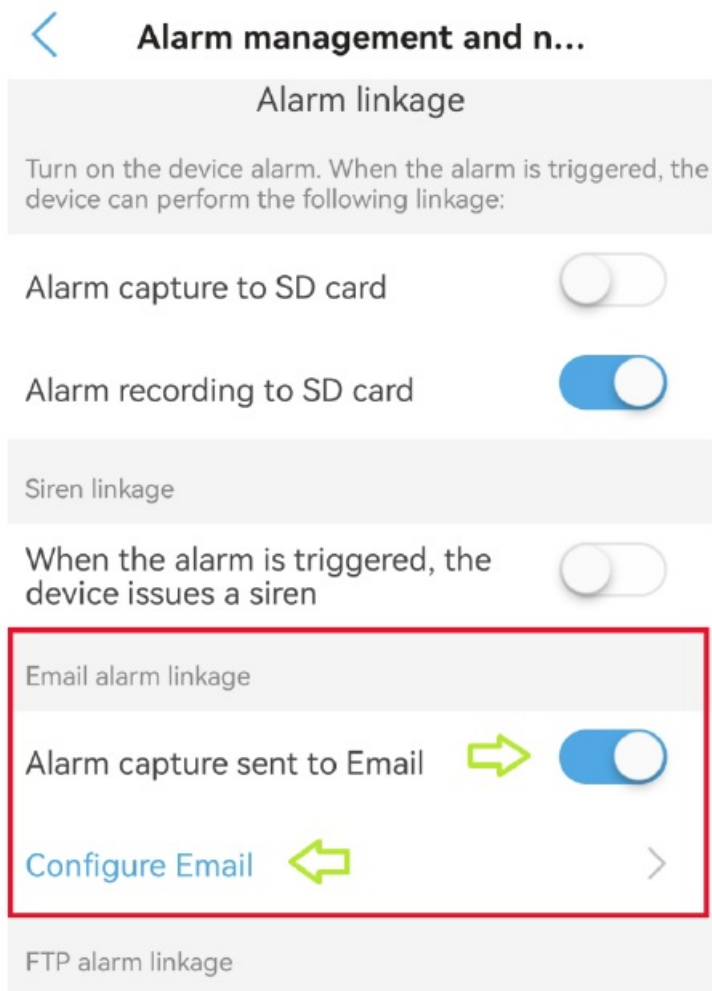
- Open CamHiPro application and click "Settings" icon like on the screen below:



2. Choose "Alarm management and notifications."



3. Find option Email alarm linkage check the box Alarm capture sent to E mail and click Configure Email.



### SMTP protocol configuration

- Fill in correct parametres as follow ed below:

**E-Mail settings**

SMTP server

port

Secure con... None ▼

verification ☒

username

password

receiving ad...

Shipping add...

theme

information

1. SMTP Server: [smtp@gmail.com](mailto:smtp@gmail.com).
2. Port: 465.
3. Secure: SSL
4. Verification: must be ON
5. Username: Your e-mail address.
6. Password: Google-generated password.
7. Receiving address email address which will be sent to
8. Shipping address: Your e mail address
9. **Theme:** theme of the message (**for example:** Alarm or Move detection)
10. Information: message content
11. Click Apply to save your config.

**ul. J. K. Branickiego 31A**  
 15-085 Białystok  
 +48 (85) 677 70 55  
[biuro@zintronic.pl](mailto:biuro@zintronic.pl)

## Documents / Resources

How to configure e-mail notifications for camera

This manual refers to cameras of A and P series.



Table of Contents:

Chapter 1 E-mail notification configuration	
1.1 E-mail notification setting	
Chapter 2 E-mail notification configuration for camera	
2.1 E-mail notification configuration for camera	
2.2 E-mail notification configuration for camera	

[Zintronic Configuration E-mail Notifications for A and P Series Camera](#) [pdf] Instructions  
Configuration E-mail Notifications for A and P Series Camera, Configuration E-mail Notification  
s P Series Camera, Configuration E-mail Notifications A Series Camera