



# Zintronic Adding Camera To The Network Using Mobile Phone Instruction Manual

[Home](#) » [Zintronic](#) » Zintronic Adding Camera To The Network Using Mobile Phone Instruction Manual 

## Contents

- 1 Zintronic Adding Camera To The Network Using Mobile Phone
- 2 Camera proper connection and configuration via mobile phone
  - 2.1 Connecting the camera to the power supply
  - 2.2 Connecting via WiFi hotspot to the camera network
- 3 Adding a camera to the CamHiPro application after connecting with a WiFi hotspot
  - 3.1 Adding a camera to the CamHiPro application
- 4 Contact Information
- 5 Documents / Resources
- 6 Related Posts



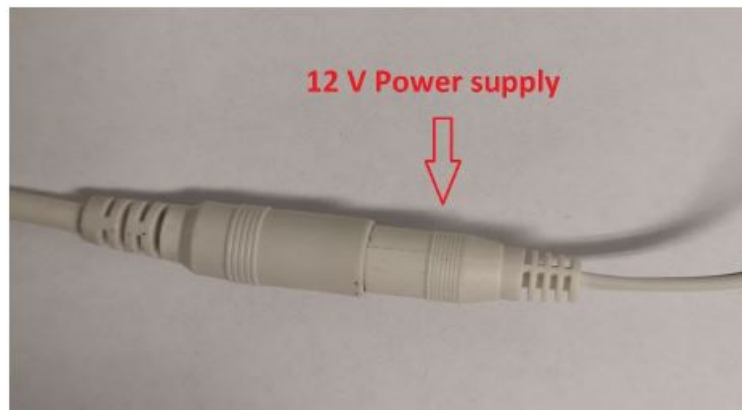
**Zintronic Adding Camera To The Network Using Mobile Phone**



## Camera proper connection and configuration via mobile phone

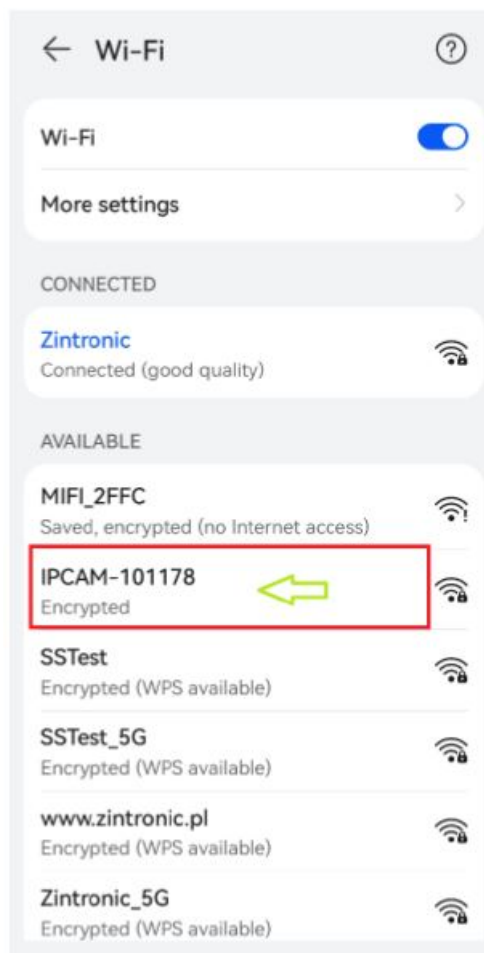
### Connecting the camera to the power supply

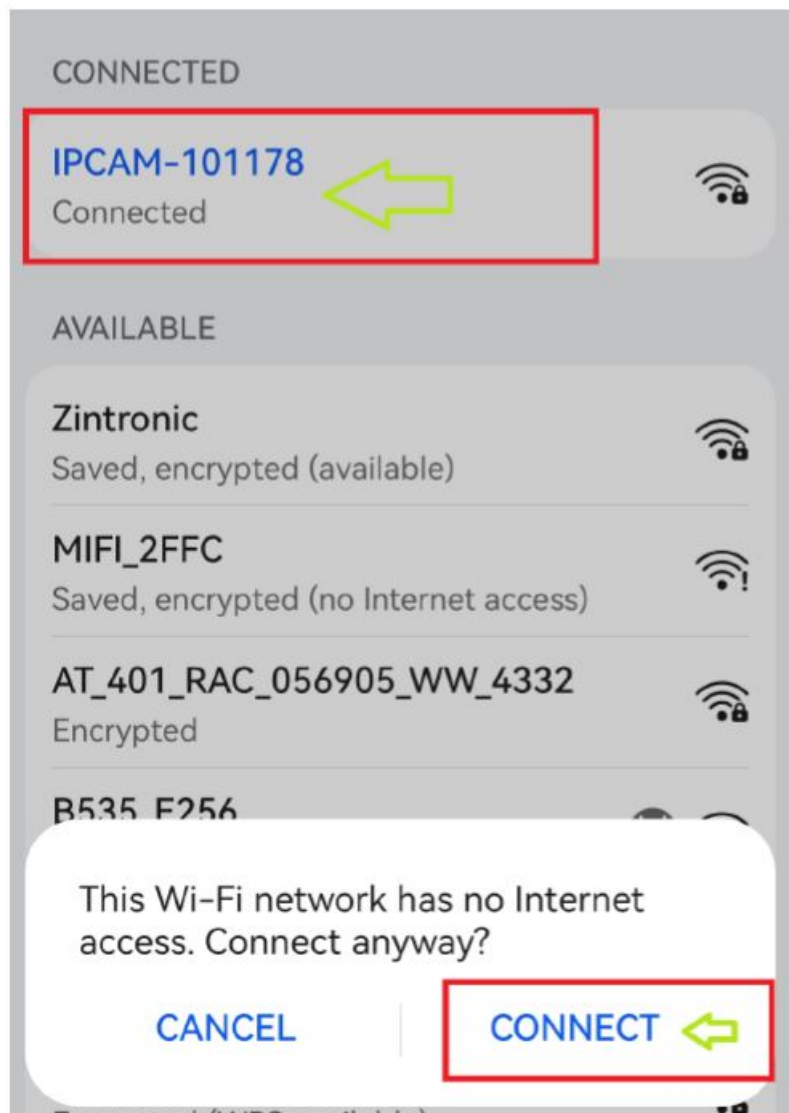
- Connect the camera using a cable power supply 12V from the box, as shown in the picture below



### Connecting via WiFi hotspot to the camera network

- A and P camera series are generating their own WiFi network, to add camera we have to go to mobile phone Settings and then check available WiFi networks
- Choose camera network IPCAM-xxxxxx-xxxxx (where x digits and letters are assigned to camera UID)
- Connect with the camera WiFi hotspot according to the example as shown in the pictures below
- Choose a camera WiFi network
- Fill in the password (01234567)
- After connecting choose "Connect anyway?" as "Connect"
- When we do this properly we will see the information „Connected without internet"

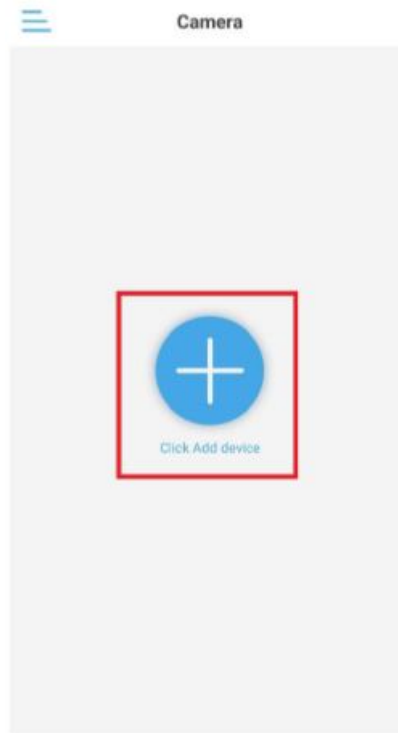




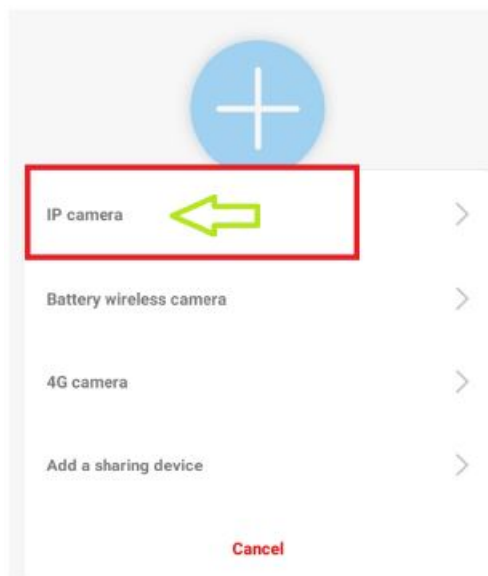
## Adding a camera to the CamHiPro application after connecting with a WiFi hotspot

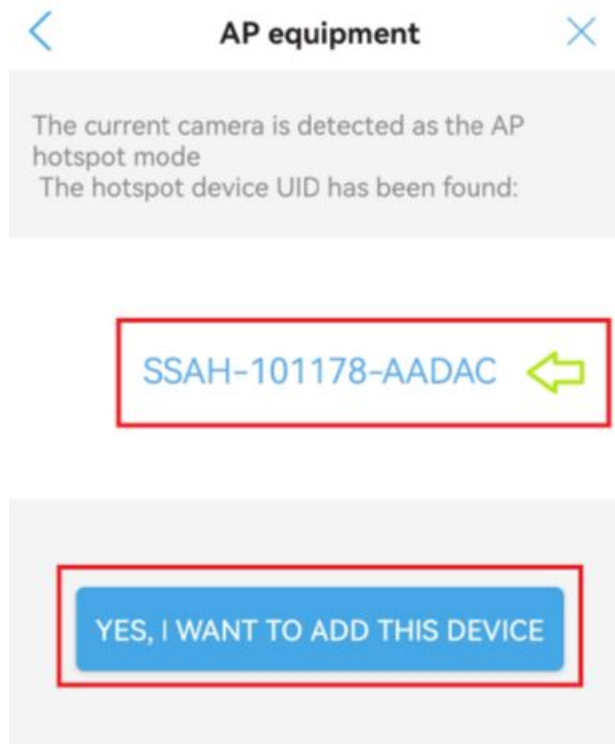
### Adding a camera to the CamHiPro application

- Turn on the CamHiPro application
- We click the „+” button in the top right corner or “Click Add device” in the middle of the screen (when we have not added any other camera yet).



- We choose the option „IP Camera”
- In the next step, the application will automatically forward us to add a camera to the network when it will be detected
- It will be shown in the pictures below





- Choose the option „Yes, I want to add this device”
- It will show the UID number of the camera, login, and password as default: admin, admin (we don't change anything)
- In the next step click „Add to”

- After adding the camera configure the WiFi network
- Look for the name of our WiFi local network on the list and select the proper one
- Then fill in the password to our WiFi local network
- In the next step accept by clicking „Configure wireless and add”
- Give a name to our camera or choose one of the shown suggestions, then click “Confirm”
- The camera will connect to our WiFi local network and it will stop emulating its own WiFi hotspot



## Wireless configuration



Current device UID: SSAH-101178-AADAC

Please choose the WiFi network you use frequently, configure it to the device, so that you can use the camera better every day.

WiFi name:

[Redacted]



WiFi password:

[Redacted]



[What are the requirements for wireless devices?](#)

Configure wireless and add

< Not configured yet, add directly >



### Select wireless

www.zintronic.pl

Signal strength: 100%

WPA2\_AES



Zintronic



Signal strength: 100%

WPA2\_AES



ZintronicSerwis

Signal strength: 100%

WPA2\_AES



SSTest

Signal strength: 100%

WPA2\_AES



B535\_E256

Signal strength: 100%

WPA2\_AES



MIFI\_2FFC



<

Wireless configuration

×

Current device UID: SSAH-101178-AADAC

Please choose the WiFi network you use frequently, configure it to the device, so that you can use the camera better every day.

WiFi name: Zintronic

WiFi password: . . . . .

[What are the requirements for wireless devices?](#)

Configure wireless and add

< Not configured yet, add directly >

<

Name setting

×

The device has been added successfully! Give it a name.

name: Camera

quick selection:

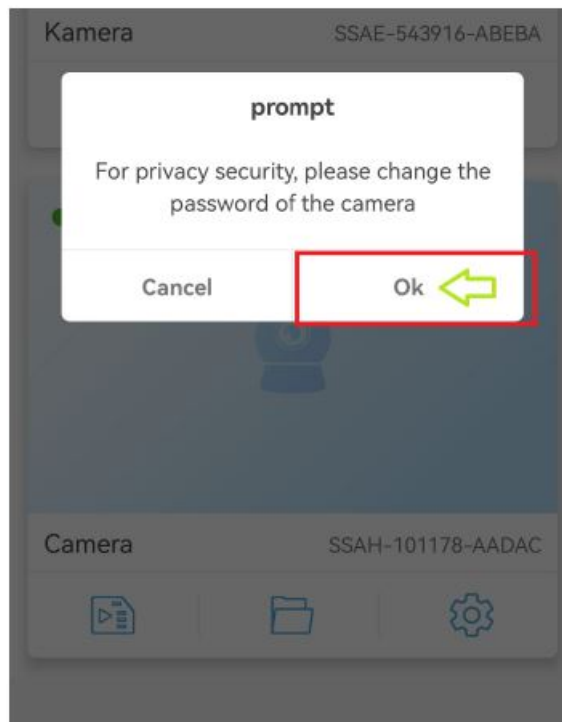
Living ro...BedroomDoorwayBaby room

StoreCorridorHallOffice

confirm

- After that, the CamHiPro application will force a password change when we will click on the screen

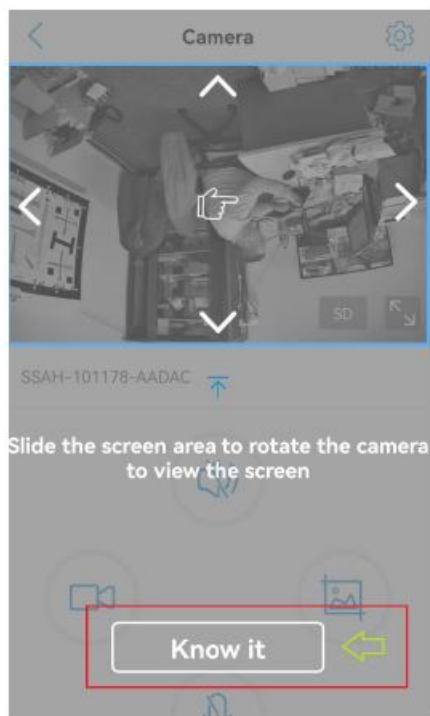




- Click „OK”

A screenshot of a 'Change password' form. At the top, there is a back arrow and the title 'Change password'. Below the title are three input fields: 'Old Pass...' with five dots, 'New Pass...' with a blacked-out password, and 'Confirm P...' with a blacked-out password. The 'New Pass...' and 'Confirm P...' fields are highlighted with red rectangles. Below the input fields is a blue text message: 'The password must contain more than 8 uppercase and lowercase letters and numbers'. Below this message is a checkbox with a blue checkmark and the text 'show password'. At the bottom of the form is a large blue button with the text 'Apply', which is highlighted with a red rectangle.

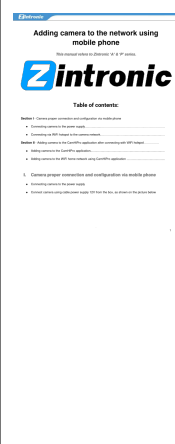
- The old password is admin
- Create your own new password (it has to contain at least 8 characters: at least 1 uppercase letter, lowercase letter, and a digit!!!)
- Repeat the new password
- Then click „Apply”.
- After that our camera will be online when we come back to the main menu and a view from the camera will be available after clicking on the screen
- Configuration completed!



## Contact Information

- ul. J.K. Branickiego 31A 15-085 Białystok
- +48 (85) 677 70 55
- [biuro@zintronic.pl](mailto:biuro@zintronic.pl).

## Documents / Resources

	<p><a href="#">Zintronic Adding Camera To The Network Using Mobile Phone</a> [pdf] Instruction Manual Adding Camera To The Network Using Mobile Phone, Camera To The Network Using Mobile P hone, Network Using Mobile Phone, Using Mobile Phone, Mobile Phone, Phone</p>
---	---