



Zillionsource Technologies ZS-300L Device Installation Guide

[Home](#) » [Zillionsource Technologies](#) » Zillionsource Technologies ZS-300L Device Installation Guide 

Contents

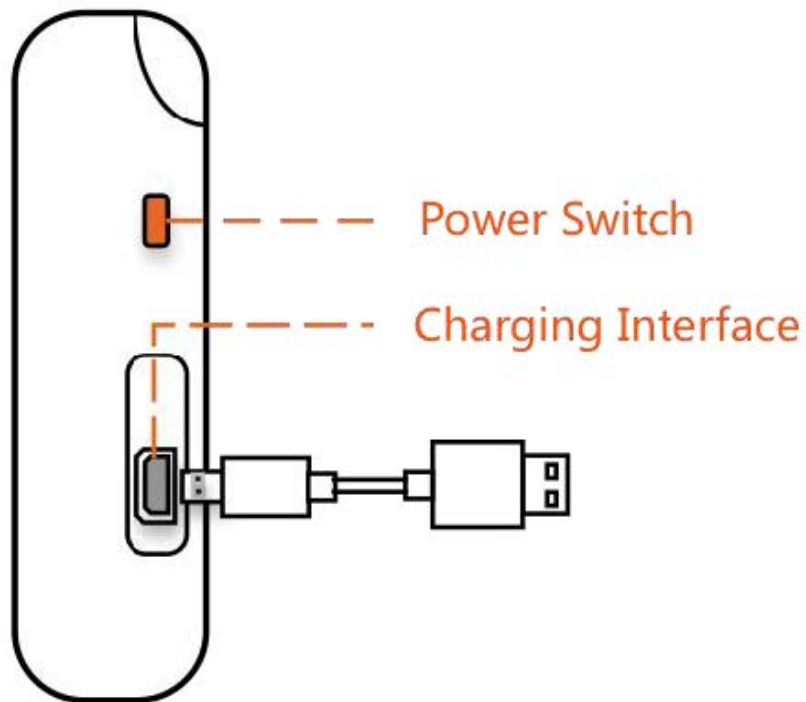
- [1 Zillionsource Technologies ZS-300L Device](#)
- [2 Device Operation Introduction](#)
- [3 Device Operate Introduction](#)
- [4 Installation Instructions](#)
- [5 Device Installation](#)
- [6 ZillionSource Technologies Co. Ltd](#)
- [7 FCC RF Exposure Information and Statement](#)
- [8 Documents / Resources](#)
 - [8.1 References](#)
- [9 Related Posts](#)



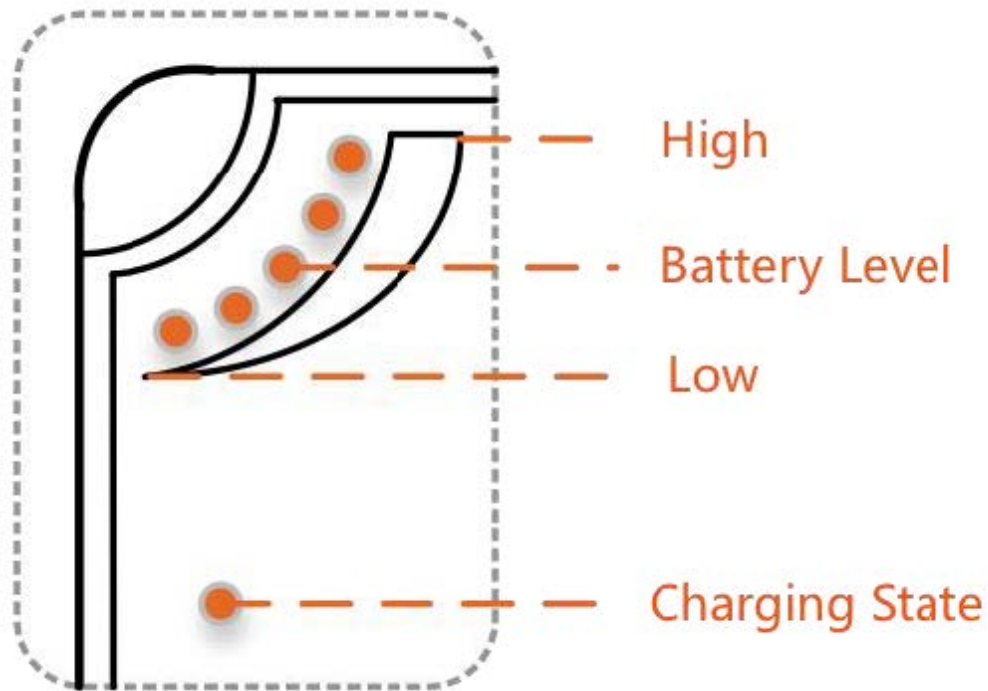
Zillionsource Technologies ZS-300L Device



Device Operation Introduction

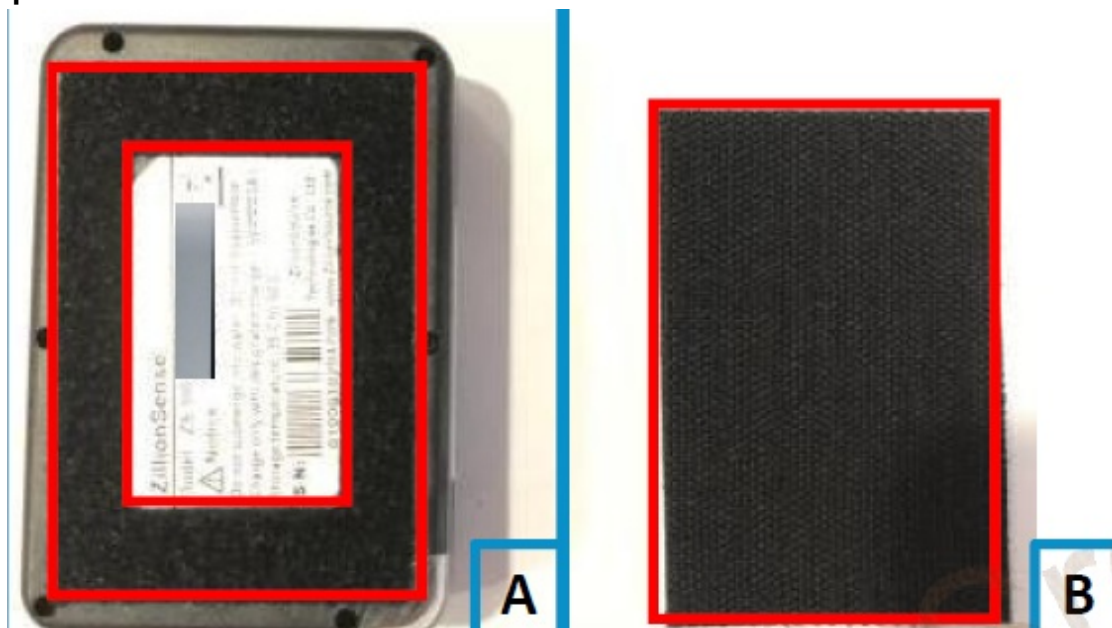


- Turn on : click the power switch button over 2 seconds
- Turn off : click the power switch button over 5 seconds.
- Status check : click the power switch button less than 1 second



- Turn off: the battery indicator will extinct one by one
- Turn on: the battery indicator will spark at the same time then extinct
- Status check: if the power is on, the battery indicator will spark one time

Device Operate Introduction



Velcro Installation Instructions

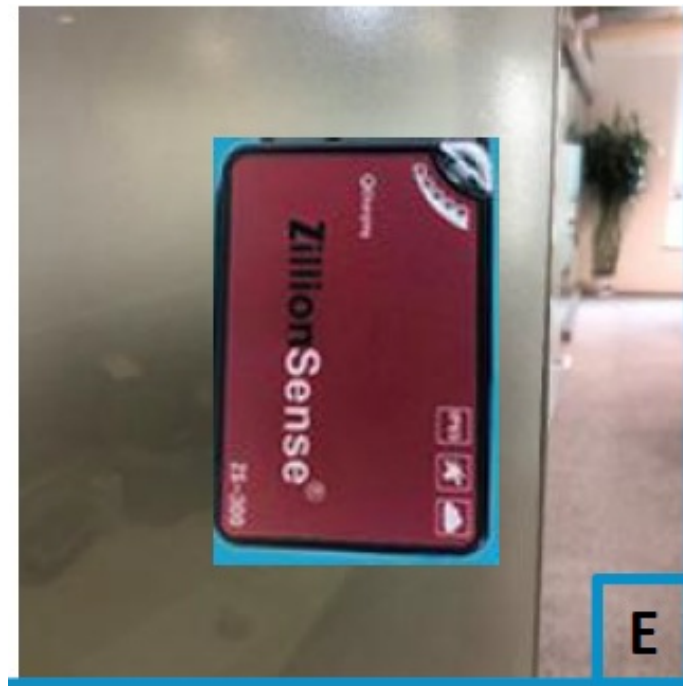
- Picture A – loop side of Velcro (already fixed on ZillionSense)
- Picture B – hook side of Velcro (disposable ones; we may send two pieces of hook side for each device with new booking for free)

Installation Instructions



- uncover the paper on back of the hook side of Velcro (see picture C)
- paste the hook side on paper position (see picture D)
- fix the loop side onto the hook side and ensure they are affixed firmly (see picture E)
- please keep the surface where be affixed on clean and dry
- please ensure the device is affixed firmly before departure
- please retrieve the device after arriving (no need taking back hook side of Velcro)

Device Installation



Fix the device on the internal surface of container door frame

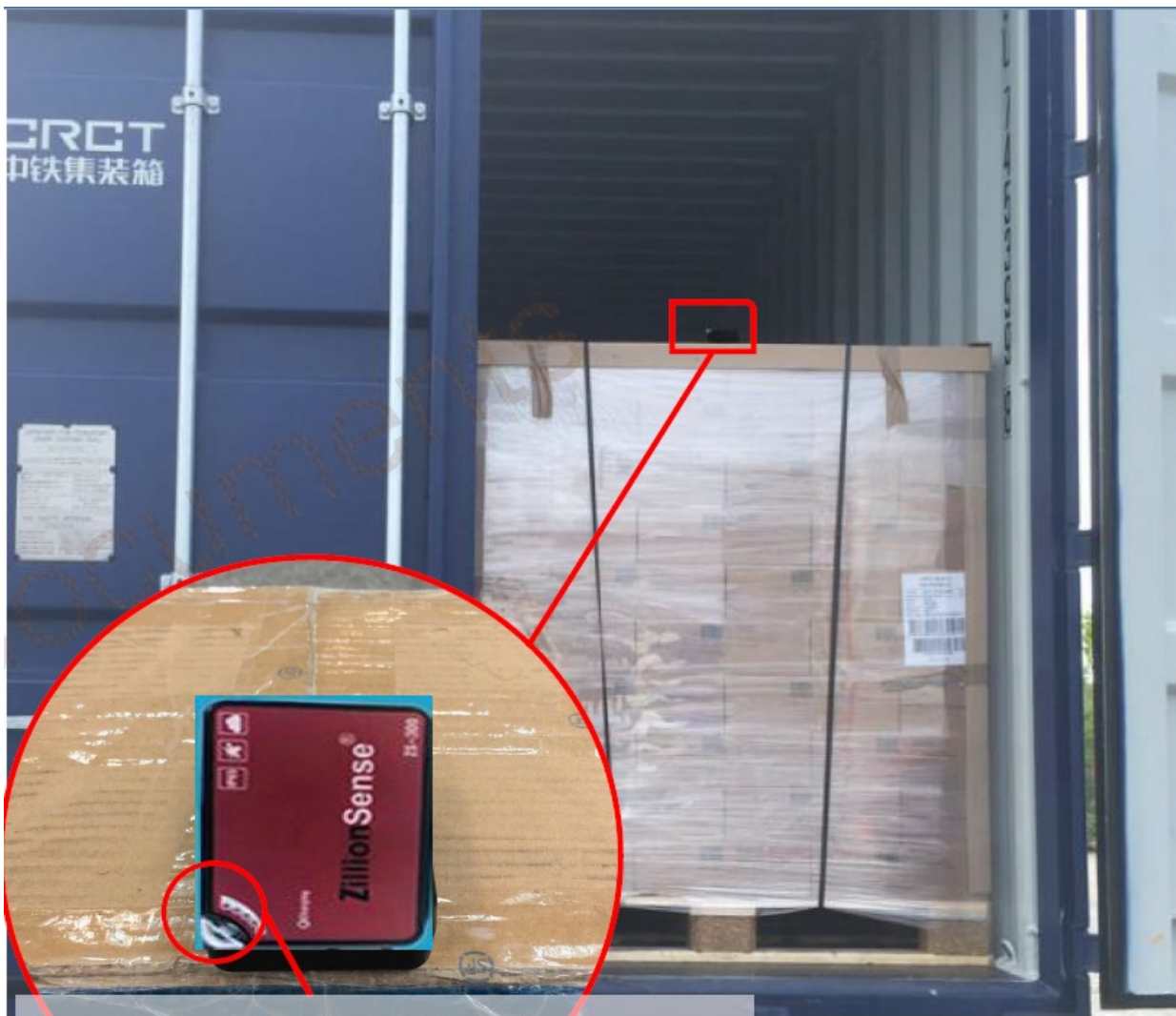


Mainly focus on when and where container door be opened.



1. Push the power switch button for less than 1 second and quickly release it to ensure that the device is in good and workable condition. (4 lights on at least)
2. Keep the internal surface of the container frame clean and dry.
3. Affix the hook side of Velcro to the internal surface of a container door frame. (affix the edging of the Velcro along the borderline of the door frame)
4. Use the loop side of the tape to attach ZillionSense to the hook side. (see the right picture)
5. Please keep the device vertical and the light sensor turn in the direction of the door opening side.
6. Ensure the device is aligned with the internal container frame and affixed firmly.

Fix the device on the internal surface of container door



**keep the light sensor facing
door opening side**

Mainly focus on when and where container door be opened.



1. Push the power switch button for less than 1 second and quickly release it to ensure that the device is in good and workable condition. (4 lights on at least)
2. Keep the internal surface of the container door clean and dry. (the right door of the container)
3. Affix the hook side of Velcro to the upper portion of a container door inner surface. (in the center of width and keep away from the door frame)
4. Use the loop side of the tape to attach ZillionSense to the hook side. (see the right picture)
 1. Please keep the device vertical and the light sensor turn in the direction of the door opening side.
 2. Ensure the device is affixed firmly.

Fix the device on cargo (upper side)



Mainly focus on when and where theft occurred and may keep tracing if still be with cargo.

Suitable for cargo with height lower than 2/3 of the whole container. Not suitable for metal or inflammable and explosive dangerous goods.

1. Push the power switch button for less than 1 second and quickly release it to ensure that the device is in good and workable condition. (4 lights on at least)
 2. Keep the upper side of cargo clean and dry.
 - Affix the hook side of Velcro to the upper portion of the good. (near door opening side)
 - Use the loop side of the tape to attach ZillionSense to the hook side. (see the right picture)
 - Please keep the light sensor facing door opening side. (see the right picture)
- Ensure the device is affixed firmly.

Fix the device on cargo (side face)

Mainly focus on when and where theft occurred and may keep tracing if still be with cargo.

Not suitable for metal or inflammable and explosive dangerous goods.

1. Push the power switch button for less than 1 second and quickly release it to ensure that the device is in good and workable condition. (4 lights on at least)
2. Keep the side face of cargo clean and dry.

- Affix the hook side of Velcro to the side portion of the good.(facing door opening side)
- Use the loop side of the tape to attach ZillionSense to the hook side facing door opening side. (see the right picture)
- Please keep the light sensor facing door opening side. (see the right picture)
- Ensure the device is affixed firmly.

Fix the device on pallet

Mainly focus on when and where theft occurred.

To avoid be damaged by forklift, please —

1. Push the power switch button for less than 1 second and quickly release it to ensure that the device is in good and workable condition. (4 lights on at least)
2. Keep the surface of pallet clean and dry.
 - Affix the hook side of Velcro to the pallet near container door.
 - Use the loop side of the tape to attach ZillionSense to the hook side near container door opening position. (see the right picture)
 - Please keep the light sensor facing door opening side. (see the right picture)
 - Ensure the device is affixed firmly.

ZillionSource Technologies Co. Ltd

Contact Us

Email: support@zillionsource.com Tel: +86 21 61921920

ZillionSource Homepage <http://www.zillionsource.com/http://www.tubaogps.com/>

Following in LinkedIn: ZillionSource Technologies Co., Ltd.

Caution:

Use the Product in an environment with a temperature Between -10°C and 30°C; Otherwise, it may damage your product. Products can only be used below 2000m altitude

For the following equipment:

Product Name: Environmental variable collector for logistics

Brand Name: ZillionTrace

Model No.: ZS-300L

ZillionSource Technologies (Shanghai) Co., Ltd.

E-mail: peterhuang@zillionsource.com

hereby declares that this [Name: Environmental variable collector for logistics, Model: ZS-300L] is in compliance with the essential requirements and other relevant provisions of Directive 2014/53/EU.

The product shall only be connected to a USB interface of version USB2.0 and that the connection to a power USB is allowed.

CAUTION
RISK OF EXPLOSION IF BATTERY IS REPLACED
BY AN INCORRECT TYPE.
DISPOSE OF USED BATTERIES ACCORDING
TO THE INSTRUCTIONS

- This product is intended for sale and application in a business environment. RED Article 10 2

- This product can be used across EU member states
- RED Article 10 10
- The product is class 1 product, No restrictions
- The RF distance between body and product is mm

2G

- **Support Networks:** GPRS, EDGE
- **Support Bands:** GPRS900, GPRS1800
- **Frequency Range:** GPRS900: Tx: 880-915MHz, Rx: 925-960MHz
GPRS1800: Tx: 1710-1785MHz, Rx: 1805-1880MHz
GSM900: 33.23dBm, GSM1800: 31.09dBm; EDGE900: 26.64dBm, EDGE1800: 26.73dBm
- **RF Output Power:** FDD-LTE Band 3, 7,8
- **4G** FDD-LTE Band 3: Tx: 1710-1785MHz, Rx: 1805-1880MHz
- **Support Bands:** FDD-LTE Band 7: Tx: 2500-2570MHz, Rx: 2620-2690MHz
- **Frequency Range:** FDD-LTE Band 8: Tx: 880-915MHz, Rx: 925-960MHz
- **RF Output Power:** FDD-LTE Band 3: 24.49dBm, FDD-LTE Band 7: 23.19dBm, FDD-LTE Band 8: 23.85dBm, Wi-Fi (2.4G, Only Receiving)

Support Standards: 802.11b, 802.11g, 802.11n-HT20

Frequency Range: 2412-2472MHz for 802.11b/g/n(HT20)

GPS

Frequency Range: 1575.42MHz Only Receiving

FCC RF Exposure Information and Statement

This device meets the government's requirements for exposure to radio waves. The guidelines are based on standards that were developed by independent scientific organizations through periodic and thorough evaluation of scientific studies. The standards include a substantial safety margin designed to assure the safety of all persons regardless of age or health. The SAR limit of USA (FCC) is 1.6 W/kg averaged. Device types: Environmental variable collector for logistics (FCC ID: 2ACRJZS-300L) has also been tested against this SAR limit. SAR information on this and other pad can be viewed on-line at <http://www.fcc.gov/oet/ea/fccid/>. Please use the device FCC ID number for search. This device was tested simulation typical 0mm to body. To maintain compliance with FCC RF exposure requirements, use accessories should maintain a separation distance between the user's bodies mentioned above, the use of holsters and similar accessories should not contain metallic components in its assembly, the use of accessories that do not satisfy these requirements may not comply with FCC RF exposure requirements, and should be avoided.

FCC Warning

This device complies with Part 15 of the FCC Rules. Operation is subject to the following two conditions:


(1) This device may not cause harmful interference, and (2) this device must accept any interference received, including interference that may cause undesired operation.

NOTE 1: This equipment has been tested and found to comply with the limits for a Class B digital device, pursuant to part 15 of the FCC Rules. These limits are designed to provide reasonable protection against harmful interference in a residential installation. This equipment generates uses and can radiate radio frequency energy and, if not installed and used in accordance with the instructions, may cause harmful interference to radio communications. However, there is no guarantee that interference will not occur in a particular installation. If this equipment does cause harmful interference to radio or television reception, which can be determined by turning the equipment off and on, the user is encouraged to try to correct the interference by one or more of the following measures:

- Reorient or relocate the receiving antenna.
- Increase the separation between the equipment and receiver.
- Connect the equipment into an outlet on a circuit different from that to which the receiver is connected.
- Consult the dealer or an experienced radio/TV technician for help.

NOTE 2: Any changes or modifications to this unit not expressly approved by the party responsible for compliance could void the user’s authority to operate the equipment.

Documents / Resources

	ZillionSource Technologies ZS-300L Device [pdf] Installation Guide ZS-300L, ZS300L, 2ACRJZS-300L, 2ACRJZS300L, ZS-300L Device, Device
---	--

References

-  [FCC ID Search | Federal Communications Commission](#)
-  [ZillionSource | ZillionSource](#)
-  [ZillionSource | ZillionSource](#)
-  [ZillionSource | ZillionSource](#)

Manuals+.