

## zigbee ZBXMS-1 Smart Motion Sensor Adopts Ultra-Low Power User Manual

[Home](#) » [zigbee](#) » zigbee ZBXMS-1 Smart Motion Sensor Adopts Ultra-Low Power User Manual 

### Contents

- 1 Motion Sensor ZBXMS-1
- 2 1. Product Introduction
- 3 2. Illustrations
- 4 3. Technical Parameters
- 5 4. Networking
- 6 5. LED Status Description
- 7 Sensor Detection Mode Description
- 8 Installation Precautions
- 9 8. Product Installation
- 10 9. Detecting Area
- 11 Warranty
- 12 Documents / Resources
- 13 Related Posts

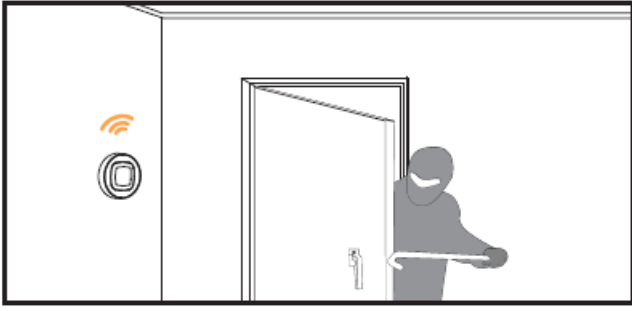
### Motion Sensor ZBXMS-1

#### USER MANUAL

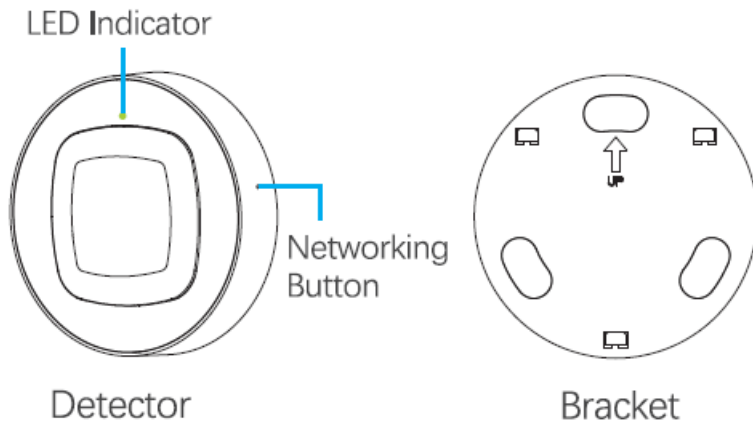
\*Please read the user manual carefully before operation. The guide picture is for reference only. please in kind prevail.

### 1. Product Introduction

The smart motion sensor adopts ultra-low power Zigbee wireless technology, with low power consumption, high security, interconnection and other characteristics. Automatic threshold adjustment technology is used to enhance the stability of the sensor, which can effectively prevent the sensor from reporting alarm falsely. Using automatic temperature compensation technology can effectively prevent the sensitivity from decreasing due to temperature changes. When the gateway is in the armed state, the motion sensor detects the movement of a person, it will send alarm signal to gateway, and gateway will send the alarm signal to mobile phone immediately.



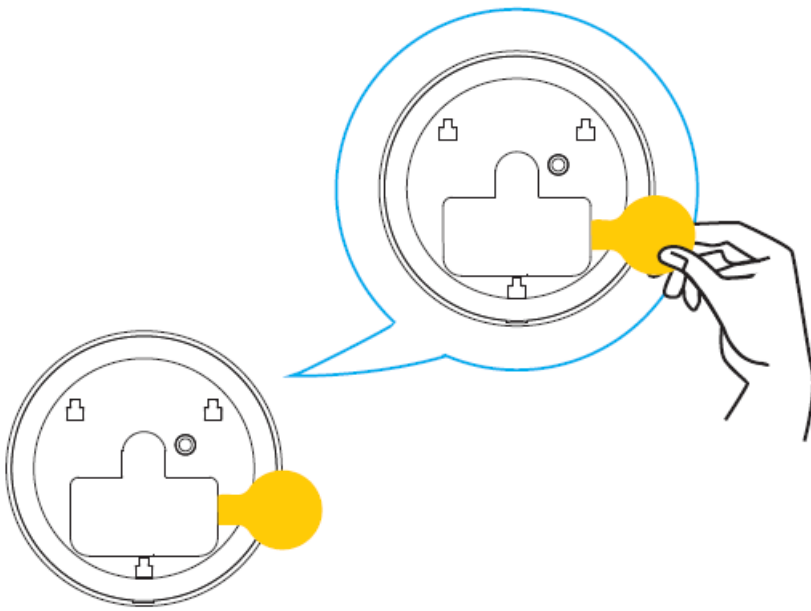
## 2. Illustrations



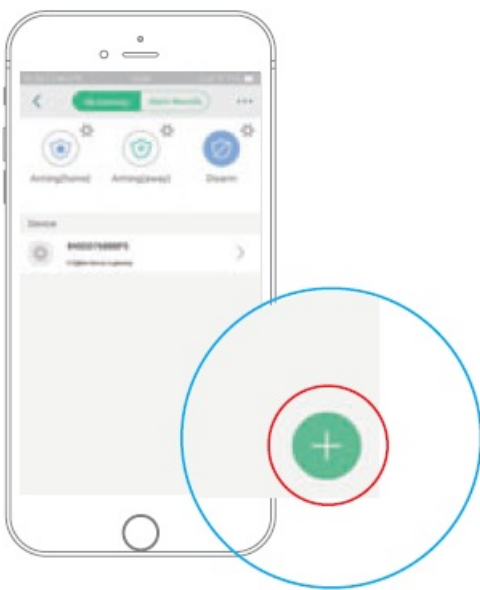
## 3. Technical Parameters

1. Operating Voltage : DC3V (CR123A/CR17335x1)
2. Detection Distance: E 9m
3. Detection Angle : 90 degree
4. Networking Mode : Zigbee
5. Wireless Networking Distance : -, -100m (open area)
6. Working Environment : —10°C +50t
7. Working Humidity : E 95% (no condensation)
8. Battery Life : 2 years (According to actual use,Battery fife may be shortened)
9. Pet Protection level: 11Kg or less
10. Dimension : 4)80mm x H28.5mm

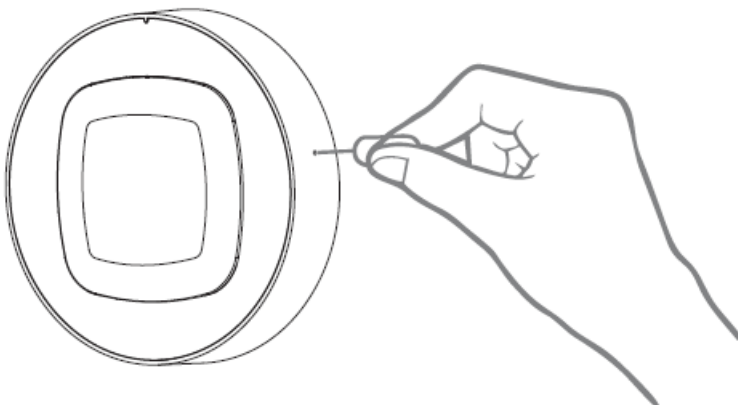
## 4. Networking



- Remove the insulating strip to electrify the device, the device will enter into warm-up state, then red LED flashes for 30 seconds and goes off, warm-up is finished.



- Open SmartZone APP and enter into gateway, then tap “+” to add Motion Sensor according to the instructions.



- Add device: according to the instructions in APP, press and hold the networking button for 2 seconds, until the green light flashes, indicating that device is added to gateway successfully.
- Delete device: press and hold the networking button for 5 seconds, until green light keeps on for 2 seconds and flashes 6 times, indicating that device is deleted from gateway successfully.

## 5. LED Status Description

LED	Status
Green	1.Green LED flashes quickly(5 times per second), when the sensor is being added to gateway. 2.Green LED keeps on for 2-3 seconds, when adding is successful. 3.Green LED flashes slowly for 6 times( twice per second), when adding is failed.
	Green LED flashes slowly for 6 times, when device is deleted from gateway successfully.
Red	Red LED flashes once, when human body movement is detected.

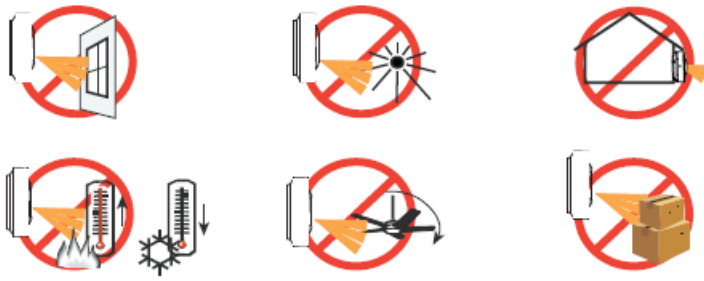
## Sensor Detection Mode Description

When the sensor is powered on. the sensor enters wane-up state, the red LED will flash for 30 seconds. After the warm-up ends, the sensor enters test mode, in the test mode, the detection interval is 1 minute. 20 minutes later, the sensor automatically enters the power-saving mode, in the power-saving mode, when the sensor detects the movement of human body, it will be able to detect movement again after no movement is detected within the detection area for over 1 minute. If human body is moving continuously within the detection area, the sensor will not enter detection state. If you need to enter the test mode again, remove the sensor battery, wait for 1 minute and then reinstall it to enter test mode.

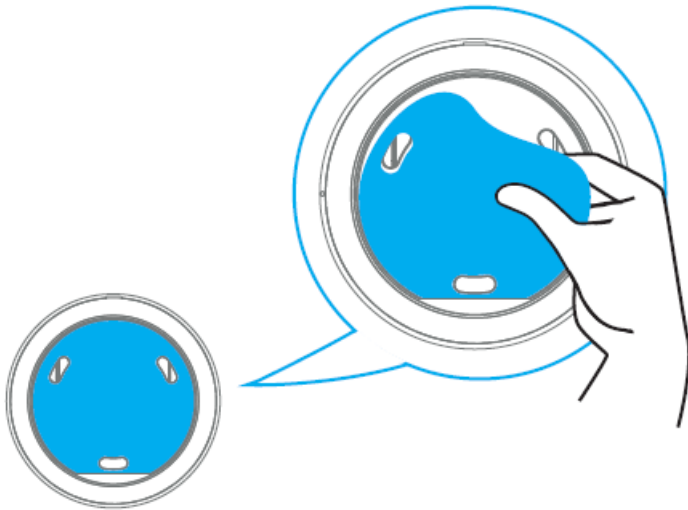
## Installation Precautions



1. This product is for indoor use only.
2. When installing, note that the LED should face upwards.
3. Avoid to install the sensor outdoors, or in places with pets, or near air-conditioners, heat source, rotating object's, or in places with direct sunshine.
4. The installation surface should be solid without vibration.
5. Please Install the sensor in places where an intruder may pass easily.

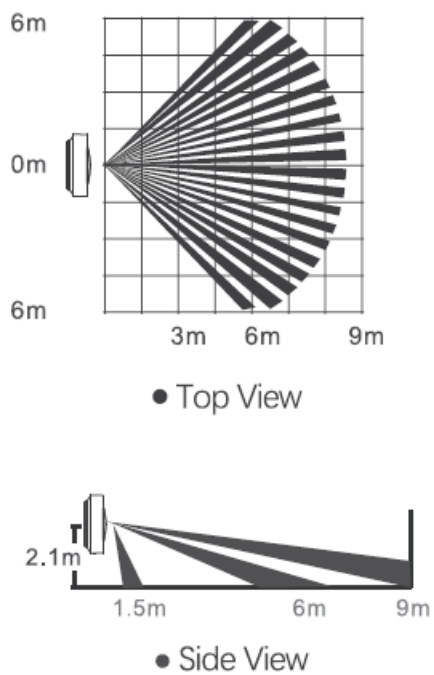


## 8. Product Installation



Paste the sensor in the proper area after removing double-side tape on the bracket.

## 9. Detecting Area



## Warranty

1. From the date of product purchase, provide free warranty and lifetime maintenance service within one year. One year later, the repairs and replacements will be charged a certain amount of cost.
2. Within one week after the sale, due to product quality problems that seriously affect the use, return can be made, but the appearance of the product must be guaranteed without any damage and the package is complete.
3. The following product damages or other causes caused by noncompany factors are not included in the company's free maintenance.
  - a. Incorrect installation.
  - b. Voltage mismatch.
  - c. Improper use due to failure to follow the instructions.
  - d. Repairs or changes not authorized by the company.
  - e. Did not provide proper working environment
  - f. Damage to the product due to secondary transportation by the user.
  - g. Force majeure factors such as natural disasters (lightning strikes, earthquakes, tsunamis, etc.) and accidents.

#### Notes:

- The pictures shown are for reference
- As the technology is constantly updated, if actual operation is inconsistent with the user manual, the final interpretation rights is reserved to the manufacturer.

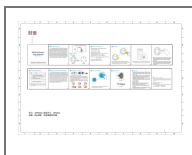
#### Shenzhen Heiman Technology Co., Ltd.

URL: [www.heimantech.com](http://www.heimantech.com)

#### Address

Helman Indust.' Park, No.84 Fugan Road, Yugtingwe Community,  
Guanladfonghua District,  
Shenzhen, China.  
Hot Line, 86-755-84193920 -H36-758-84193951

#### Documents / Resources



[zigbee ZBXMS-1 Smart Motion Sensor Adopts Ultra-Low Power](#) [pdf] User Manual  
ZBXMS-1, ZBXMS1, 2AP2FZBXMS-1, 2AP2FZBXMS1, ZBXMS-1 Smart Motion Sensor Adopts  
s Ultra-Low Power, Smart Motion Sensor Adopts Ultra-Low Power