

Zigbee

SR-ZG9011A-DS Zigbee
Door Window Sensor



SR-ZG9011A-DS Zigbee Door Window Sensor Installation Guide

[Home](#) » [zigbee](#) » SR-ZG9011A-DS Zigbee Door Window Sensor Installation Guide 

Contents

- [1 SR-ZG9011A-DS Zigbee Door Window Sensor](#)
- [2 Frequently Asked Questions](#)
- [3 Documents / Resources](#)
 - [3.1 References](#)
- [4 Related Posts](#)

Zigbee

SR-ZG9011A-DS Zigbee Door Window Sensor



Specifications

- Product: Zigbee Door/Window Sensor
- Radio Frequency: Zigbee
- Power Supply: Battery
- Operating temperature: [Provide temperature range]
- Relative humidity: [Provide humidity range]
- Dimensions: [Provide dimensions]

Physical Installation

1. Peel off the protective layer from the sticker on the sensor.
2. Stick the sensor onto the door/window frame.
3. Peel off the protective layer from the sticker on the magnet.
4. Stick the magnet onto the moving part of the door/window, no further than 10mm from the sensor.

Positioning of the Sensor and the magnet

[Include any specific positioning instructions here]

Operations

1. Adding the device to a Zigbee gateway:

1. From your ZigBee gateway or hub interface, choose to add a device and enter Pairing mode as instructed by the gateway.
2. Press and hold the Prog. Button on the device for 5 until the LED indicator flashes three times, indicating successful pairing.

2. Factory reset the device.

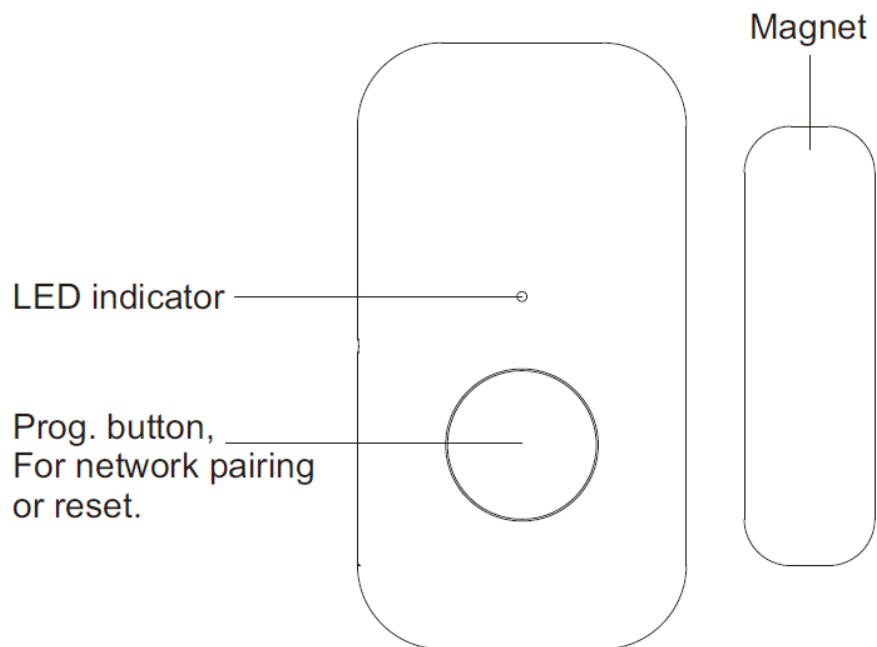
1. Press and hold the Prog. button on the device for 5s until the
The LED indicator flashes three times, indicating a factory reset.

Battery Replacement

1. Pull up the main part of the transmitter.
2. Replace the battery and then insert the transmitter back into the bracket.

Note: The distance between the transmitter and the magnet should not exceed 10mm.

Important: Read All Instructions Before Installation Function introduction



Product Data

Radio Frequency	2.4GHz
Power Supply	3VDC (CR2032 Batteries)
Operating temperature	0 to 40°C
Relative humidity	8% to 80%
Dimensions	Transmitter: 49×26.5x10mm, Magnet: 35.5×10.5x10mm

Safety & Warnings

- This device contains button lithium batteries that shall be stored and disposed of properly
- DO NOT expose the device to moisture.

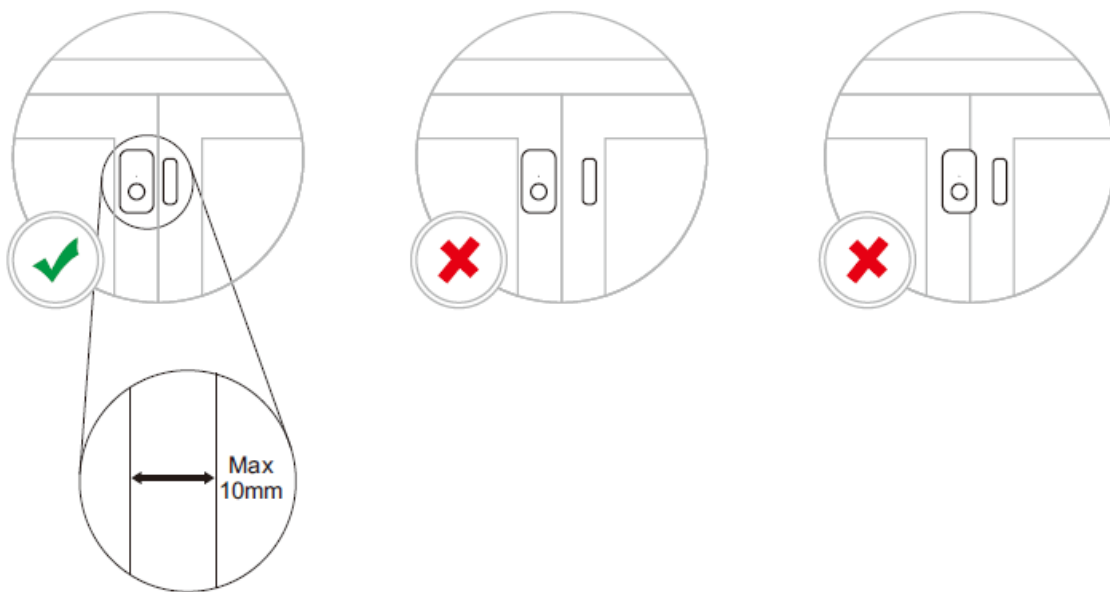
Product Description

- The Zigbee Door Window sensor is a wireless, battery-powered contact sensor, compatible with the Zigbee 3.0 standard.
The device can be operated intelligently by working with a Zigbee gateway to communicate with other devices. It is a ZigBee low-energy wireless door/window sensor that lets you know the opening/closing status of the door and window by separating the magnet from the transmitter. Connect it with the gateway which supports the automation function and you can create a smart scene to trigger other devices.

Physical Installation

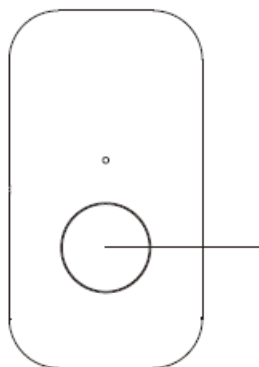
1. Peel off the protective layer from the sticker on the sensor.
2. Stick the sensor onto the door/window frame.

3. Peel off the protective layer from the sticker on the magnet.
4. Stick the magnet onto the moving part of the door/window, no further than 10mm from the sensor.



Operations

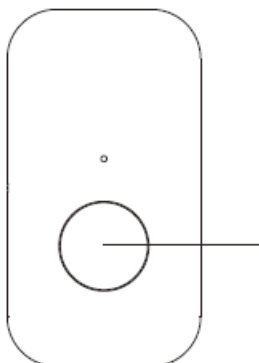
1. Added the device to a Zigbee gateway



Step 1: From your ZigBee gateway or hub interface, choose to add a device and enter Pairing mode as instructed by the gateway.

Step 2: Press and hold the Prog. Button on the device for 5 until the LED indicator flashes three times, which means the device has entered the pairing mode, and then the indicator will flash rapidly to indicate successful pairing.

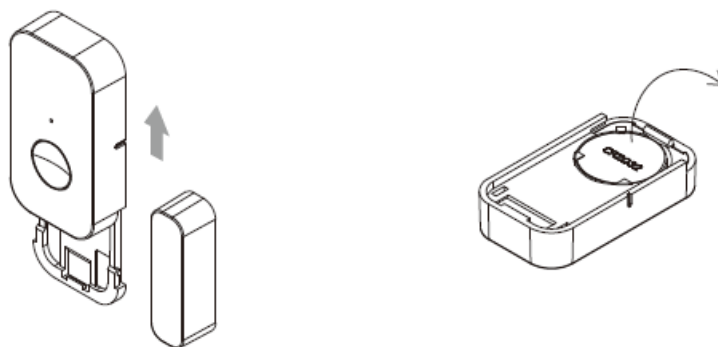
2. Factory reset the device



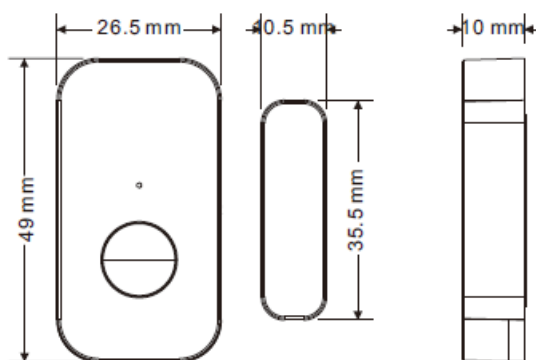
Press and hold the Prog. Button on the device for 5s until the LED indicator flashes three times, which means the device is reset to factory default and then enters network pairing mode.

How to replace a battery

- 1. Pull up the main part of the transmitter
- 2. Replace the battery and then insert the transmitter back into the bracket



Product Size



Battery Warnings & Safty Warnings and Statements:

This product contains a CR Coin Cell Lithium Battery and meets the requirements of the 16 CFR Part 1263. For your safety and to ensure proper operation, please carefully read and understand the following warnings and statements.

Warning

- **INGESTION HAZARD:** This product contains a button cell or coin battery.
- **DEATH** or serious injury can occur if ingested. A swallowed button cell or coin battery can cause Internal Chemical Burns in as little as 2 hours.
- **KEEP** new and used batteries **OUT OF REACH** of **CHILDREN**
- Seek immediate medical attention if a battery is suspected to be swallowed or inserted inside any part of the body.

Statements:

- **INDOOR USE ONLY**

- Remove and immediately recycle or dispose of used batteries according to local regulations and keep them away from children. Do NOT dispose of batteries in household trash or incinerate them.
- Even used batteries may cause severe injury or death.
- Call a local poison control center for treatment information.
- Do not install any battery other than CR2032 or its equivalent.
- Ensure the CR2032 operates at the nominal battery voltage (3VDC).
- Non-rechargeable batteries are not to be recharged.
- Do not force discharge, recharge, disassemble, heat above (manufacturer's specified temperature rating), or incinerate. Doing so may result in injury due to venting, leakage, or explosion resulting in chemical burns.
- Ensure the batteries are installed correctly according to polarity (+ and -). • Do not mix old and new batteries, different brands, or types of batteries, such as alkaline, carbon-zinc, or rechargeable batteries. • Remove and immediately recycle or dispose of batteries from equipment not used for an extended period according to local regulations.
- Always completely secure the battery compartment. If the battery compartment does not close securely, stop using the product, remove the batteries, and keep them away from children.
- If the battery leaks, do not touch or smell it, wipe the leakage from the battery compartment, and then replace the battery with a new one.
- If a battery leaks and the material contacts your skin or clothing, flush the exposed area thoroughly with running water. In case of eye contact, flush thoroughly with copious amounts of clean running water and seek immediate medical assistance.

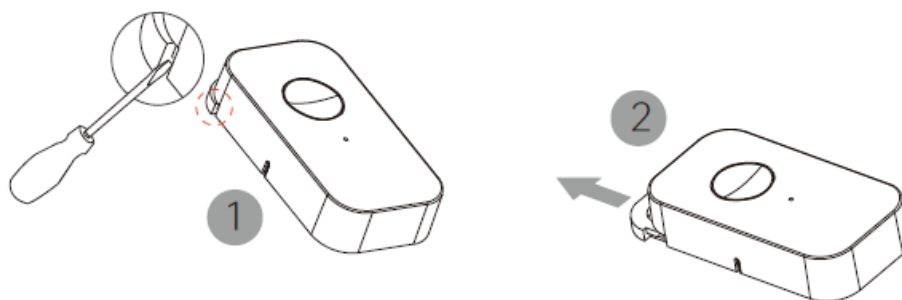
Battery information

- Battery
 - CR2032
- Battery Type
 - Button Cell
- Operation Voltage
 - 3VDC
- Diameter
 - 20mm(0.787inch)

How to install or replace a battery:

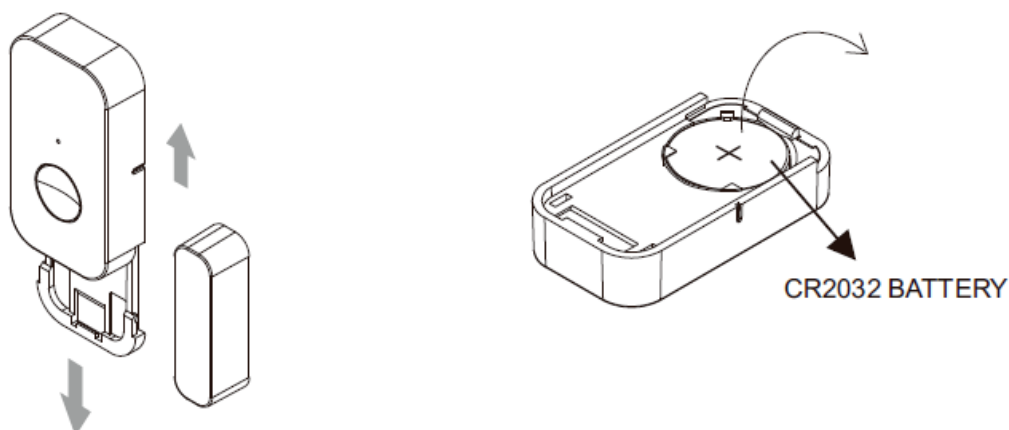
This product is designed with a battery compartment that is secured to prevent unauthorized access, especially by children. This safety feature ensures that the battery remains safely enclosed, minimizing the risk of accidental removal or exposure.


1. Use a suitable tool or your hand, push the notch to loosen the rear cover, then push it out further.



2. Slide down the rear cover to open the battery compartment.

3. Take out the battery.



BATTERY	Description
+	 Note to distinguish between the + or – of the battery.
–	

- Note to distinguish between the + or – of the battery, install the new battery in the battery compartment correctly, and push the compartment into the sensor, then check and make sure that the battery compartment is locked and secured.

Disposing of used batteries

- When disposing of used batteries, please comply with governmental regulations or environmental public institutions' rules that apply in your country/area.
- Note and follow the **STATEMENTS** in **WARNINGS AND STATEMENTS**

Frequently Asked Questions

Q: What should I do if the LED indicator does not flash during pairing?

A: If the LED indicator does not flash during pairing, check the battery and ensure it is properly inserted. If the issue persists, contact customer support for further assistance.

Documents / Resources

	Zigbee SR-ZG9011A-DS Zigbee Door Window Sensor [pdf] Installation Guide SR-ZG9011A-DS Zigbee Door Window Sensor, SR-ZG9011A-DS, Zigbee Door Window Sensor , Door Window Sensor, Window Sensor, Sensor
---	---

References

- [User Manual](#)

[Manuals+](#), [Privacy Policy](#)

This website is an independent publication and is neither affiliated with nor endorsed by any of the trademark owners. The "Bluetooth®" word mark and logos are registered trademarks owned by Bluetooth SIG, Inc. The "Wi-Fi®" word mark and logos are registered trademarks owned by the Wi-Fi Alliance. Any use of these marks on this website does not imply any affiliation with or endorsement.