

Zigbee RGB CCT DIM 3 in 1 Remote User Manual

[Home](#) » [zigbee](#) » Zigbee RGB CCT DIM 3 in 1 Remote User Manual 

Zigbee RGB CCT DIM 3 in 1 Remote

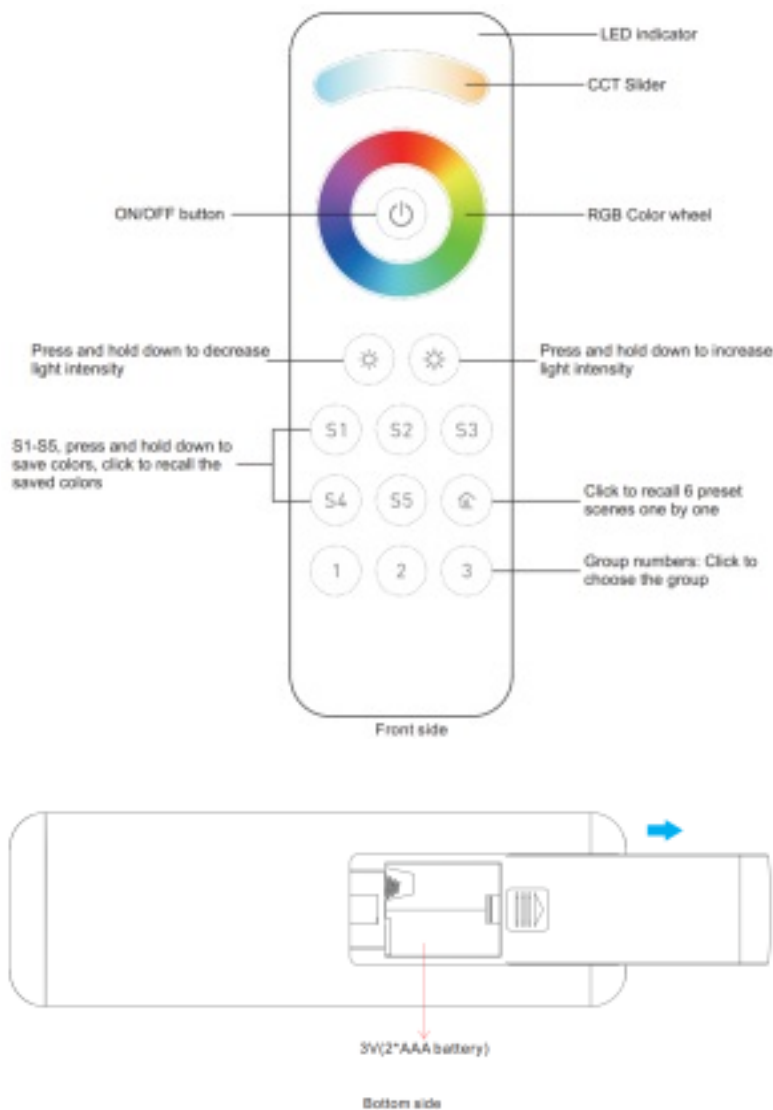


Important: Read All Instructions Prior to Installation

Contents

- [1 Function introduction](#)
- [2 Product Data](#)
- [3 ZigBee Clusters Supported by This Remote Are As Follows](#)
- [4 Safety & Warnings](#)
- [5 Operation](#)
- [6 Documents / Resources](#)
- [7 Related Posts](#)

Function introduction



Product Data

Protocol	ZigBee 3.0
Operation Voltage	3V(2*AAA battery)
Transmission Frequency	2.4GHz
Transmission Range (free field)	30m
Dimming Range	0.1%-100%
Dimension	140x44x17mm
Protection Grade	IP20

- ZigBee RGB+CCT+DIM remote based on ZigBee 3.0
- High sensitive & high stable touch color wheel, fast & precise color control
- Battery powered remote with low power consumption
- Enables to pair ZigBee lighting devices through touchlink commissioning
- Supports find and bind mode to pair with ZigBee lighting devices
- Supports 3 groups for binding max. 30 lighting devices · With 6 preset scenes, enables to save and recall 5 scenes
- 2.4 GHz global operation
- Transmission range up to 30m
- Compatible with universal ZigBee Gateway products
- Enables to bind and control universal DIM, CCT, RGB, RGBW and RGB+CCT zigbee lighting devices

ZigBee Clusters Supported by This Remote Are As Follows

Input clusters:

- Basic
- Power Configuration
- Identify
- Diagnostics

Output clusters:

- Identify
- Group
- Scene

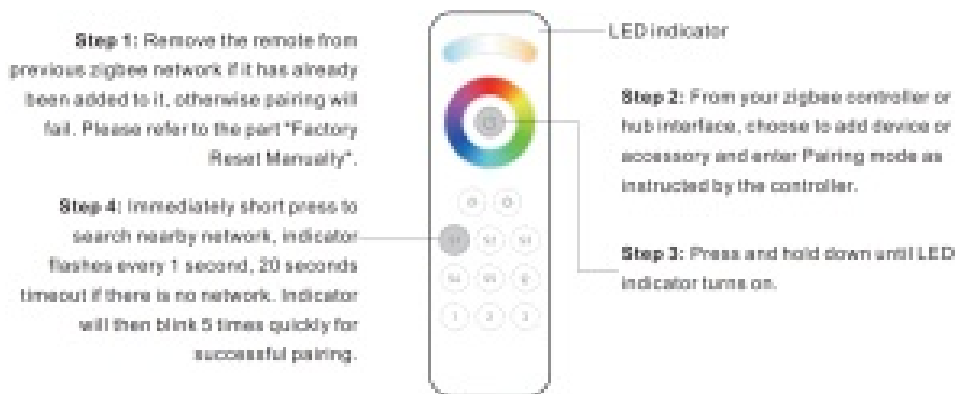
- On/off
- Level control
- Ota
- Color control

Safety & Warnings

- This device contains AAA batteries that shall be stored and disposed properly.
- DO NOT expose the device to moisture.

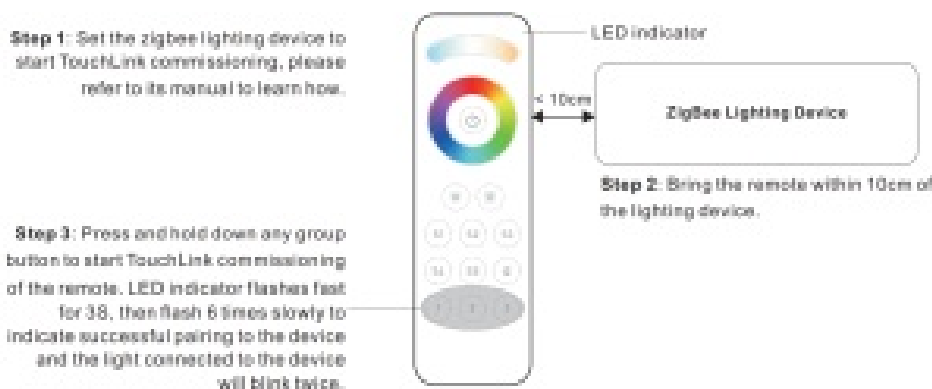
Operation

1. This ZigBee remote is a wireless transmitter that communicates with a variety of ZigBee compatible systems. This transmitter sends wireless radio signals that are used to remotely control a compatible system.
2. This ZigBee remote supports 3 groups for binding max. 30 lighting devices and enables to control DIM, CCT, RGB, RGBW and RGB+CCT zigbee lighting devices.
3. Zigbee Network Pairing through Coordinator or Hub (Added to a Zigbee Network)



Note:

- 1) After pairing successfully, the remote information will appear on the controller or hub interface.
 - 2) No remote information will appear on the hub interface if pairing to Philips Hue Bridge.
4. TouchLink to a Zigbee Lighting Device



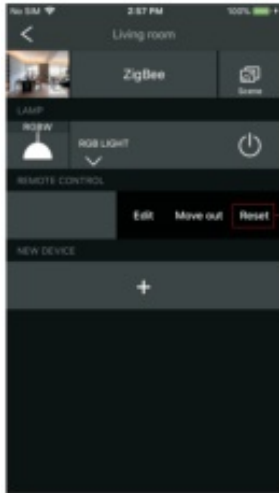
Note: 1) Directly TouchLink (both not added to a ZigBee network), each remote can link with 30 devices.

2) TouchLink after both added to a ZigBee network, each remote 1can link with max. 30 devices.

3) For Hue Bridge & Amazon Echo Plus, add remote and device to network first then TouchLink.

4) After TouchLink, the remote can control the linked lighting devices.

5. Removed from a Zigbee Network through Coordinator or Hub Interface

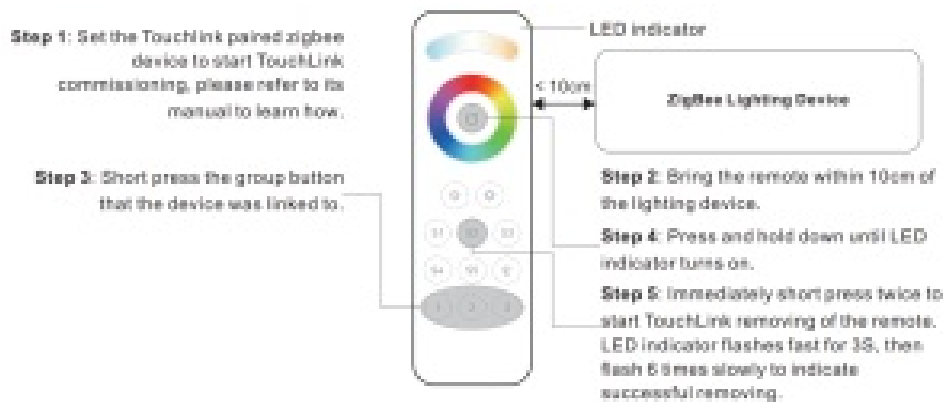


From your ZigBee controller or hub interface, choose to delete or reset the remote as instructed, indicator flashes 3 times quickly to indicate successful removing.

6. Factory Reset Manually

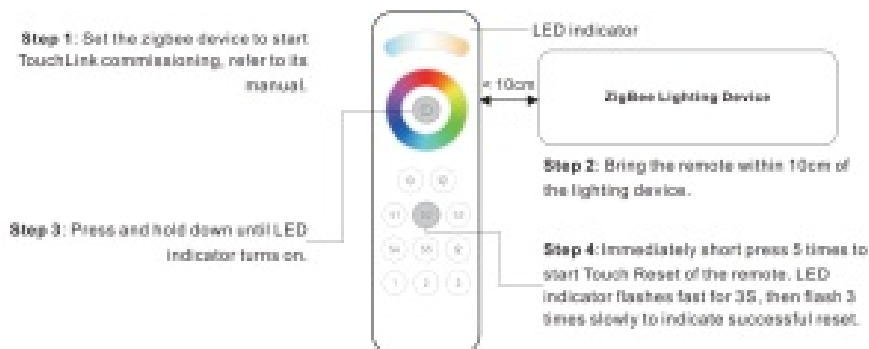


7. Remove a Touchlink Paired ZigBee Lighting Device



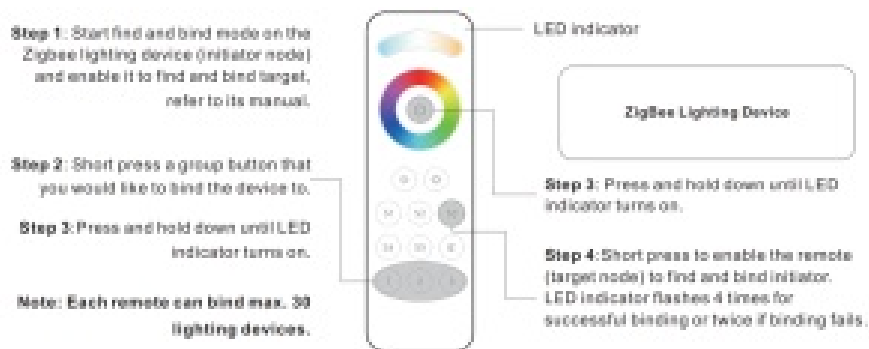
8. Factory Reset a Lighting Device (Touch Reset)

Note: the device shall be added to a network, the remote added to the same one or not added to any network.



9. Find and Bind a Zigbee Lighting Device

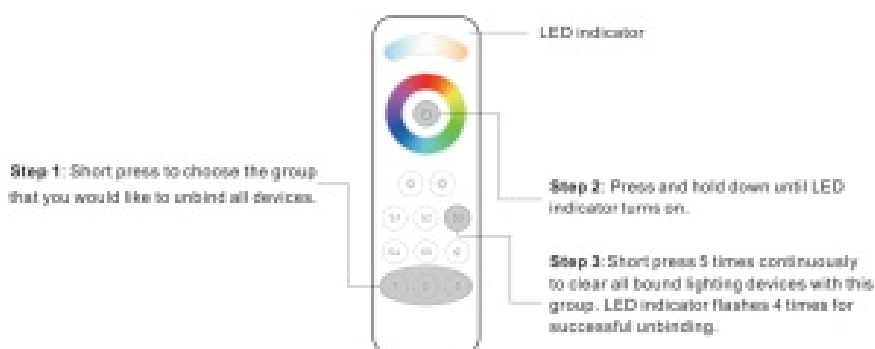
Note: Make sure the device and remote already added to the same zigbee network.



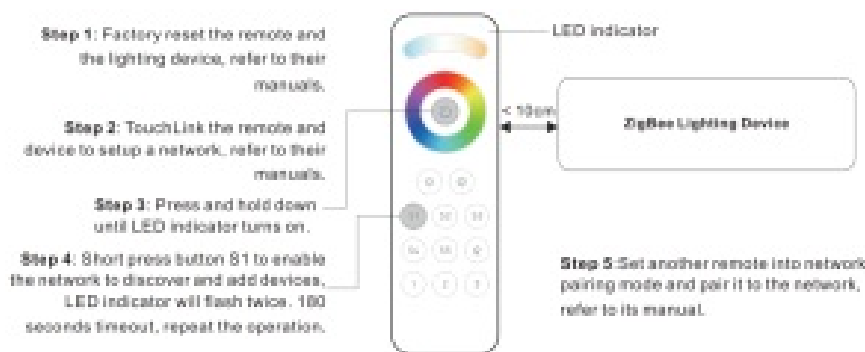
10. Find and Unbind a Zigbee Lighting Device



11. Clear All Find and Bind Mode Paired Lighting Devices of a Group



12. Setup a Network & Add Devices to the Network (No Coordinator or Hub Required)



Step 6: Add more remotes to the network as you would like.

Step 7: Factory reset the lighting devices that you would like then add them to the network, refer to their manuals.

Step 8: Touchlink to pair the added remotes and lighting devices, refer to their manuals. Each remote can link with max. 30 lighting devices. Each lighting device can be linked by max. 30 remotes.

13. OTA

Short press any button, indicator blinking means the remote has already been added to a network. No blinking of indicator means the remote does not belong to any network.

14. How to Check Whether the Remote Belongs to a Network or not

Short press any other buttons except group buttons, indicator blinking means the remote has already been added to a network, no blinking of indicator means the remote does not belong to any network.

15. Battery Power Monitor Function

The remote will report battery power value to the coordinator under following situations:

- When powered on.
- When operating the switch to send data packets (over 4 hours since last operation).
- When added to the network by a coordinator.



Documents / Resources

	<p>Zigbee RGB CCT DIM 3 in 1 Remote [pdf] User Manual RGB CCT DIM 3 in 1 Remote</p>
---	---