



# ZigBee PK4WZS Button Panel Remote Wall Controller Instruction Manual

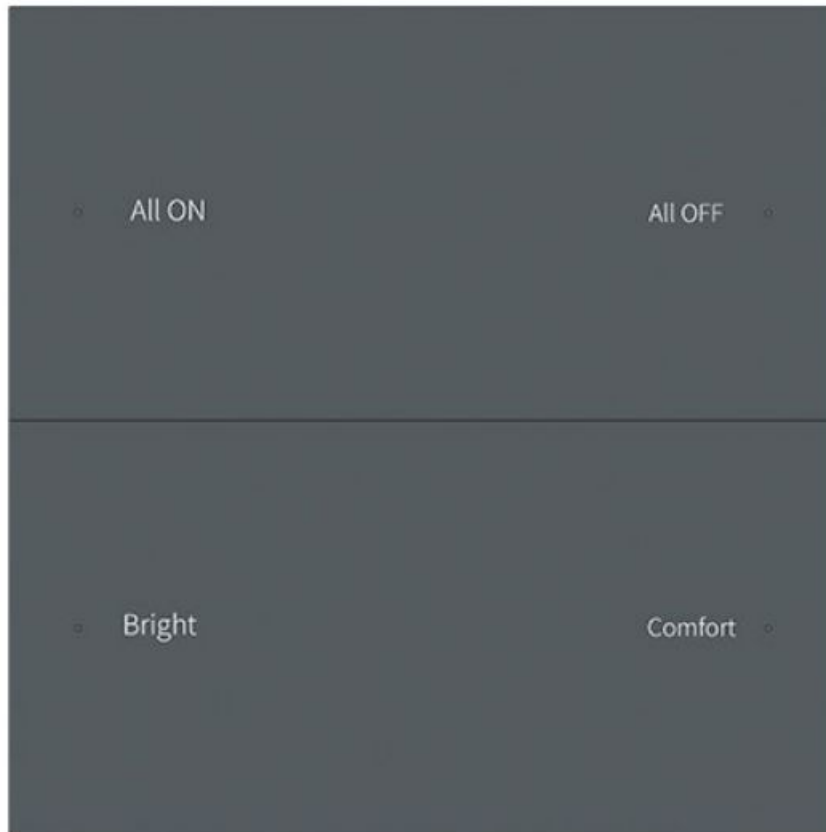
[Home](#) » [zigbee](#) » ZigBee PK4WZS Button Panel Remote Wall Controller Instruction Manual 

## Contents

- [1 ZigBee PK4WZS Button Panel Remote Wall Controller](#)
- [2 Product Information](#)
- [3 Product Usage Instructions](#)
- [4 Features](#)
- [5 Technical Parameters](#)
- [6 Mechanical Structures and Installations](#)
- [7 Key function](#)
- [8 APP Operating Instructions](#)
- [9 Documents / Resources](#)



**ZigBee PK4WZS Button Panel Remote Wall Controller**



## Product Information

### Zigbee 3.0 Wall Mounted Scene Panel

**Model No.:** PK4(WZS), PK8(WZS)

#### Features:

- 4/8 button scene panel remote with a scene recall
- Built-in Tuya Zigbee 3.0 remote module
- Supports scenario linkage and one-click execution
- Set scene function through Tuya APP
- Each button has a blue LED indicator
- Customizable button words
- Provides a variety of Chinese/English scene button pasters, which can flexibly define the functions of each button

#### Technical Parameters:

- Input voltage: 100-240VAC
- Input current: Max 0.1A
- Output signal: Zigbee 3.0
- Remote distance: 30m (Barrier-free space)
- Warranty: 5 years

## **Safety and EMC:**

- EMC standard (EMC): ETSI EN 301 489-1 V2.2.3, ETSI EN 301 489-17 V3.2.4
- Safety standard (LVD): EN 62368-1:2020+A11:2020
- Radio Equipment (RED) Certification: ETSI EN 300 328 V2.2.2, CE, EMC, LVD, RED

## **Environment:**

- Operation temperature: -30°C ~ +55°C
- Case temperature (Max.): +65°C
- IP rating: IP20
- Package Size: L112mm x W112mm x H50mm
- Gross weight: 0.223kg

## **Mechanical Structures and Installations:**

- AC input N
- AC input L
- Installation diagram:
- Uninstall button: Turn the screw
- Typical base is as below:
- Install the button:

## **Product Usage Instructions**

### **Key Function:**

Short press the scene button to recall the corresponding scene and the blue indicator lights up. Before using the scene panel, please edit the scene setting through Tuya APP first.

### **PK4(WZS) Button Functions:**

1. Scene 1
2. Scene 2
3. Scene 3
4. Scene 4

### **PK8(WZS) Button Functions:**

1. Scene 1
2. Scene 2
3. Scene 3
4. Scene 4
5. Scene 5

6. Scene 6
7. Scene 7
8. Scene 8

### **APP Operating Instructions:**

#### Network pairing

Download the Tuya APP and register an account, search, and add the Tuya Zigbee gateway device. For PK4: Press and hold the Scene 1 and Scene 4 buttons until the 4 LED indicator light flashes.

### **Remote association and scene settings:**

There are 8 scenes in the Tuya APP, which can be set to lighting scenes or linkage scenes. The lighting scene is used for the overall control of multiple lamps, like the light adjustment of the entire room. Linkage scene is used for linkage control of different equipment, such as lamps and curtains on and off together.

#### **Example 1, set scene 1 for synchronous light control of the whole room:**

1. Select Scene 1 and open the lighting scene settings.
2. You can change the scene name, add one or more devices, adjust brightness and color, then save it.
3. After successful setting, you can use the remote to control these lamps directly.

#### **Example 2, set scene 2 to set up a scenario where different lamps or curtains are controlled together with different colors or on/off states:**

1. Select Scene 2 and open the linkage scene settings.
2. You can change the scene name, add one-click execution tasks, select the devices that need to be linked, and save the required functions, such as ON/OFF, mode, brightness, and color temperature.
3. After successful setup, you can use the remote to directly control all linked devices to the desired scene.

**Note:** The Scene 1-8 in Tuya APP corresponds to the scene 1-8 button on the scene panel. You can select one scene button to set the ALL OFF linkage scene function to turn off all lights. To delete the scene function, you can select Reset in the scene settings.

### **Features**

- The 4/8 button scene panel is remote with scene recall.
- Built-in Tuya Zigbee 3.0 remote module, supports scenario linkage and one-click execution.
- Set scene function through Tuya APP.
- Each button has a blue LED indicator.
- Customizable button words.
- Provide a variety of Chinese/English scene button posters, which can flexibly define the functions of each button.

### **Technical Parameters**

<b>Input and Output</b>	
Input voltage	100-240VAC
Input current	Max 0.1A
Output signal	Zigbee 3.0
Remote distance	30m(Barrier-free space)
<b>Warranty</b>	
Warranty	5 years

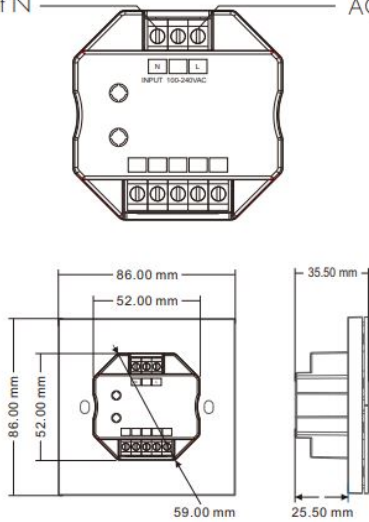
### Safety and EMC

EMC standard (EMC)	ETSI EN 301 489-1 V2.2.3
	ETSI EN 301 489-17 V3.2.4
Safety standard(LVD)	EN 62368-1:2020+A11:2020
Radio Equipment(RED)	ETSI EN 300 328 V2.2.2
Certification	CE, EMC, LVD, RED

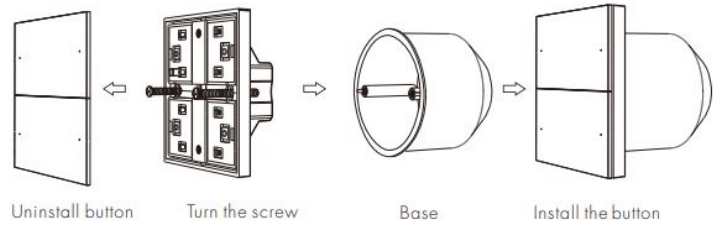
<b>Environment</b>	
Operation temperature	Ta: -30 OC ~ +55 OC
Case temperature (Max.)	Ta: +65OC
IP rating	IP20
<b>Package</b>	
Size	L112x W112 x H50mm
Gross weight	0.223kg

## Mechanical Structures and Installations

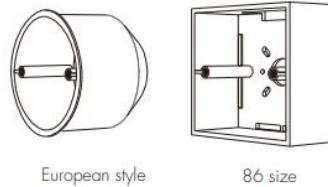
AC input N AC input L



Installation diagram:



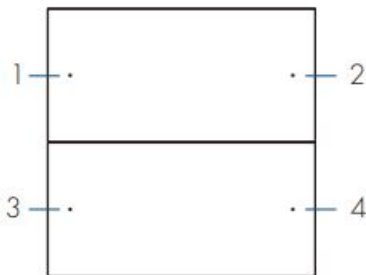
Typical base as below:



## Key function

Short press the scene button to recall the corresponding scene, the blue indicator lights up. Before use the scene panel, please edit the scene setting through Tuya APP firstly.

PK4(WZS)



PK8(WZS)



1. Scene 1
2. Scene 2
3. Scene 3
4. Scene 4
1. Scene 1
2. Scene 2
3. Scene 3
4. Scene 4
5. Scene 5
6. Scene 6
7. Scene 7
8. Scene 8

## APP Operating Instructions

### 1. Network pairing

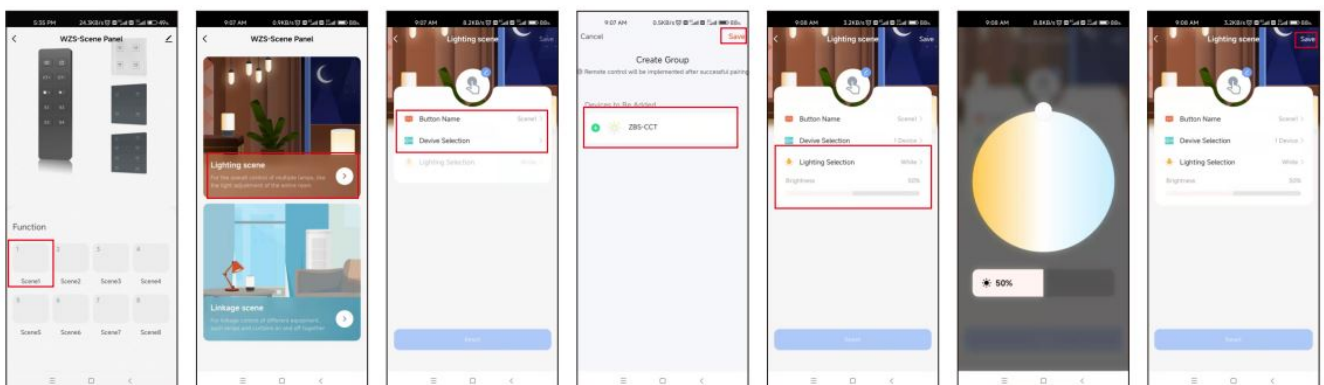
- Download the Tuya APP and register an account, search, and add the Tuya Zigbee gateway device.
- **For PK4:** Press and hold the “Scene 1” and “Scene 4” buttons until the 4 LED indicator light flashes.

- Under the gateway, you can find the WZS-Scene Panel device in Tuya APP.
- After successful network pairing, the 4 LED indicator lights will be on for 2 seconds and then off.
- **For PK8:** Press and hold the “Scene 1” and “Scene 8” buttons until the 8 LED indicator light flashes.
- Under the gateway, you can find the WZS-Scene Panel device in Tuya APP.
- After successful network pairing, the 8 LED indicator light will be on for 2 seconds and then off.
- Under the gateway, search and add one or more ZBS-DIM, ZBS-CCT, ZBS-RGB, ZBS-RGBW, and ZBS-RGB+CCT light devices.
- **Scene panel unpairing:** Delete the WZS-Scene Panel device from the Tuya APP.

## 2. Remote association and scene settings

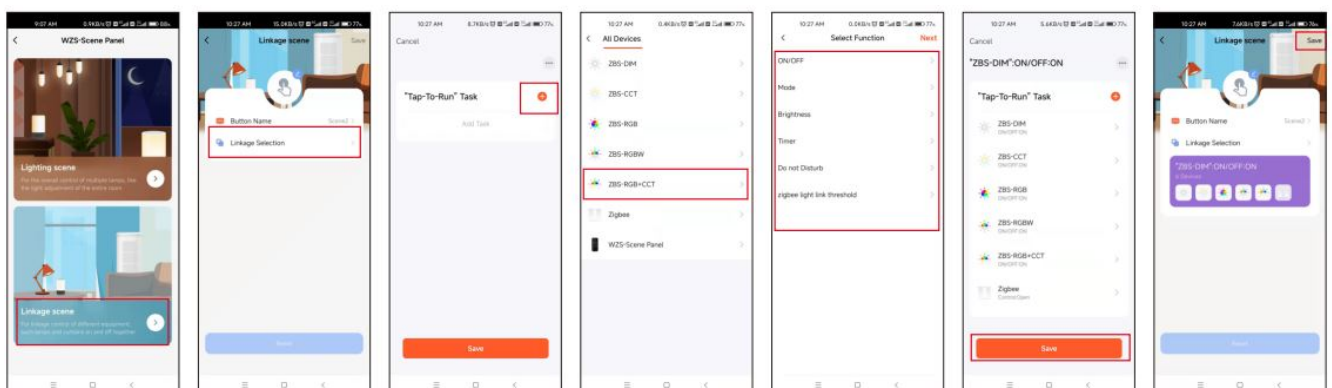
- There are 8 scenes in the Tuya APP, which can be set to lighting scenes or linkage scenes.
- The lighting scene is used for the overall control of multiple lamps, like the light adjustment of the entire room. Linkage scene is used for linkage control of different equipment, such as lamps and curtains on and off together.
- Example 1, set scene 1 for synchronous light control of the whole room:

1. Select Scene 1 and open the lighting scene settings.
2. You can change the scene name, add one or more devices, adjust brightness and color, then save it.
3. After successful setting, you can use the remote to control these lamps directly.



**Example 2,** set scene 2 to set up a scenario where different lamps or curtains are controlled together with different colors or on/off state.

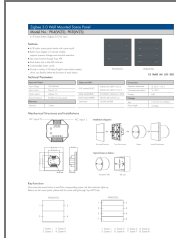
1. Select Scene 2 and open the linkage scene settings.
2. You can change the scene name, add “one-click execution” tasks, select the devices that need to be linked, and save the required functions, such as ON/OFF, mode, brightness, and color temperature.
3. After successful setup, you can use the remote to directly control all linked devices to the desired scene.



## Note:

- The scene1-8 in Tuya APP is correspond to the scene 1-8 button on the scene panel.
- You can select one scene button to set the ALL OFF linkage scene function to turn off all lights.
- To delete the scene function, you can select “Reset” in the scene settings.

## Documents / Resources



[ZigBee PK4WZS Button Panel Remote Wall Controller](#) [pdf] Instruction Manual  
PK4WZS, PK8WZS, PK4WZS Button Panel Remote Wall Controller, Button Panel Remote Wall  
Controller, Panel Remote Wall Controller, Remote Wall Controller, Wall Controller, Controller

[Manuals+.](#)