



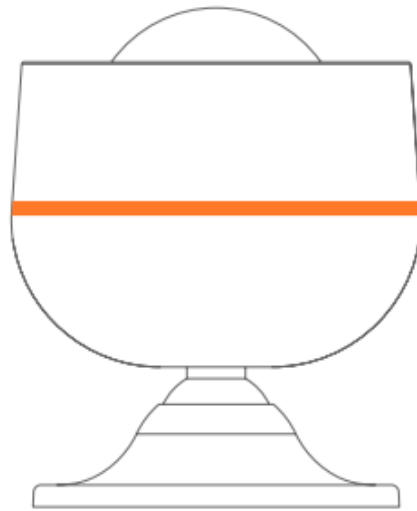
# ZigBee NAS-PD07B2 Motion Sensor User Guide

[Home](#) » [zigbee](#) » ZigBee NAS-PD07B2 Motion Sensor User Guide 

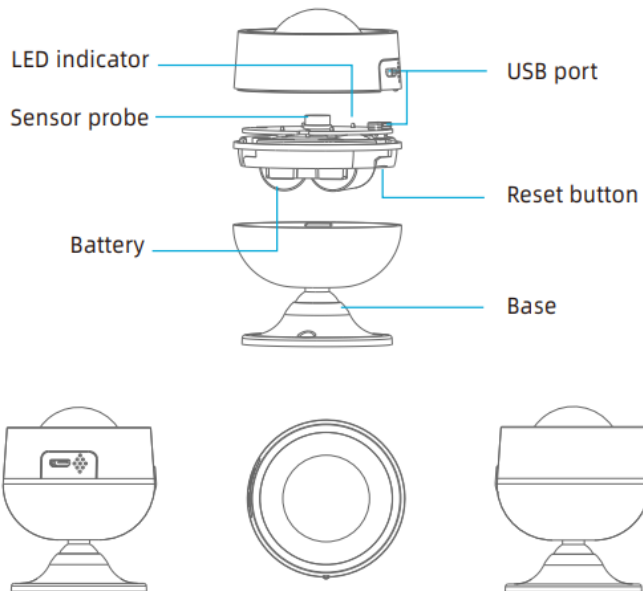
## Contents

- [1 ZigBee NAS-PD07B2 Motion Sensor User Guide](#)
- [2 Product Configuration](#)
- [3 Feature & Specifications](#)
- [4 LED State](#)
- [5 NOTE:](#)
- [6 1. Download APP](#)
- [7 2. Register and Login](#)
- [8 Add ZigBee Controller](#)
- [9 Add Device](#)
- [10 Main User Interface](#)
- [11 Advanced Features](#)
- [12 OTHER FUNCTION](#)
- [13 Device sharing](#)
- [14 Push notification](#)
- [15 Remove device](#)
- [16 Read More About This Manual & Download PDF:](#)
- [17 Documents / Resources](#)
- [18 Related Posts](#)

# ZigBee NAS-PD07B2 Motion Sensor User Guide



## Product Configuration



## Feature & Specifications

Battery: CR123A 3V\*2  
USB Power supply: 5V/1A  
Standby current: 27uA  
Detect range: 10M  
Detect angle: 120°  
Wireless frequency: 2.4GHz  
Communication protocol: Zigbee 3.0  
Wireless standard: Zigbee IEEE 802.15.4  
Wireless range: 55M  
Size: 68mm x 56mm x 56mm

## LED State

Device Status	LED State
---------------	-----------

Pairing mode     Indicator flashes 2times/second

## **NOTE:**

1. Before configuring the device to app, please reset it.
2. Need to configure a zigbee hub to app first before configuring the device to app.
3. The power displays as 100% when powered by 5V 1A.
4. There is function of anti false triggering, so need to press the button one time before resetting.
5. There are three alarm duration time for choice"30s, 60s, 120s""
6. Before setting the alarm duration time, please wake up device first.

## **1. Download APP**

Download the "Smart life" app from APP Store or Google Play to your mobile.

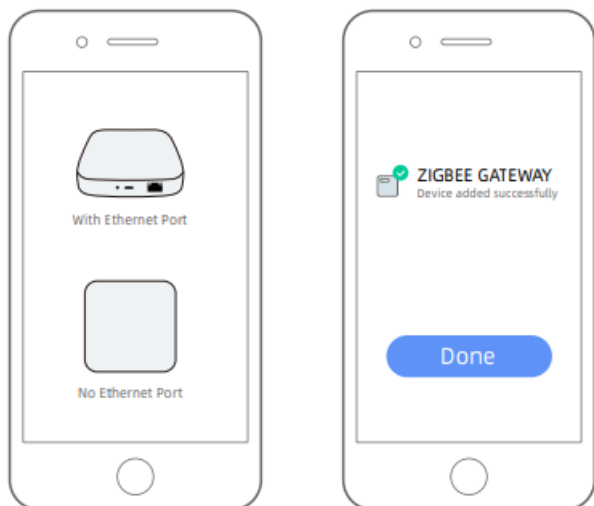


## **2. Register and Login**

- A. Launch the "Smart life" app.
- B. To register, enter your mobile phone number or email address, create a password, then login to the app.
- C. Login if you have an account already

## **Add ZigBee Controller**

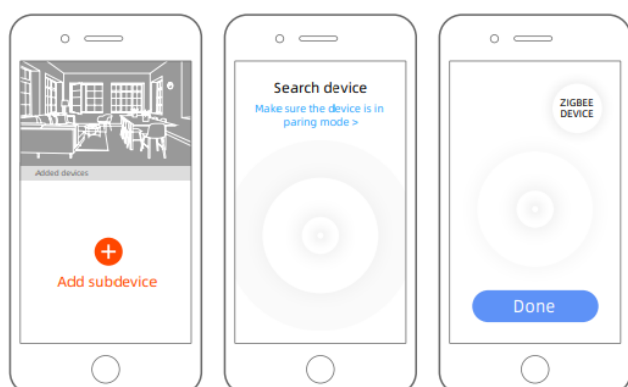
Add Tuya ZigBee controller first and operate with the controller user manual. (Pls notice the wired and wireless version controller)



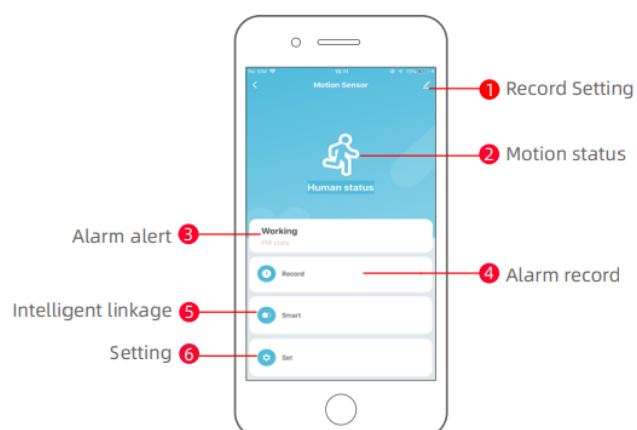
Note: The diagram is for reference only. (UI maybe different in other APP version)

## Add Device

Add the ZigBee device.(Reset first before configuration)



## Main User Interface



Note: The diagram is for reference only. (UI maybe different in other APP version)

## Advanced Features

You can experience the various advanced features of the device with the app, just try and do it yourself.

### 1. Alarm record evic record

APP recording:Check all the added devices alarm message in history .

### 2. Setting Power display,

Alarm duration time setting

Alarm message switch]

## OTHER FUNCTION

Linkage alarm setting

To connect two Sensors via scene setting.

## Device sharing

Allow others to control the device

## Push notification

Open/close push notification

## Remove device

Restore default settings; Delete and add the device again to clear the record by APP.



Smart Home Device contains WiFi smart device,Z-Wave device and ZigBee device,give you more choices to create a new smart life.

Wide application on the living room, kitchen, bedroom,bathroom, garage, garden, yard or basement of your home,office,warehouse,chain store...

Make life smarter and more convenient.



***Read More About This Manual & Download PDF:***

## **Documents / Resources**

	<a href="#">ZigBee NAS-PD07B2 Motion Sensor</a> [pdf] User Guide NAS-PD07B2 Motion Sensor, NAS-PD07B2, NAS-PD07B2 Sensor, Motion Sensor, Sensor
--	--