



## NAMRON ZIGBEE 2 KANALER BRYTER K4 SORT Instruction Manual

[Home](#) » [zigbee](#) » NAMRON ZIGBEE 2 KANALER BRYTER K4 SORT Instruction Manual 

### NAMRON ZIGBEE 2 KANALER BRYTER K4 SORT Instruction Manual

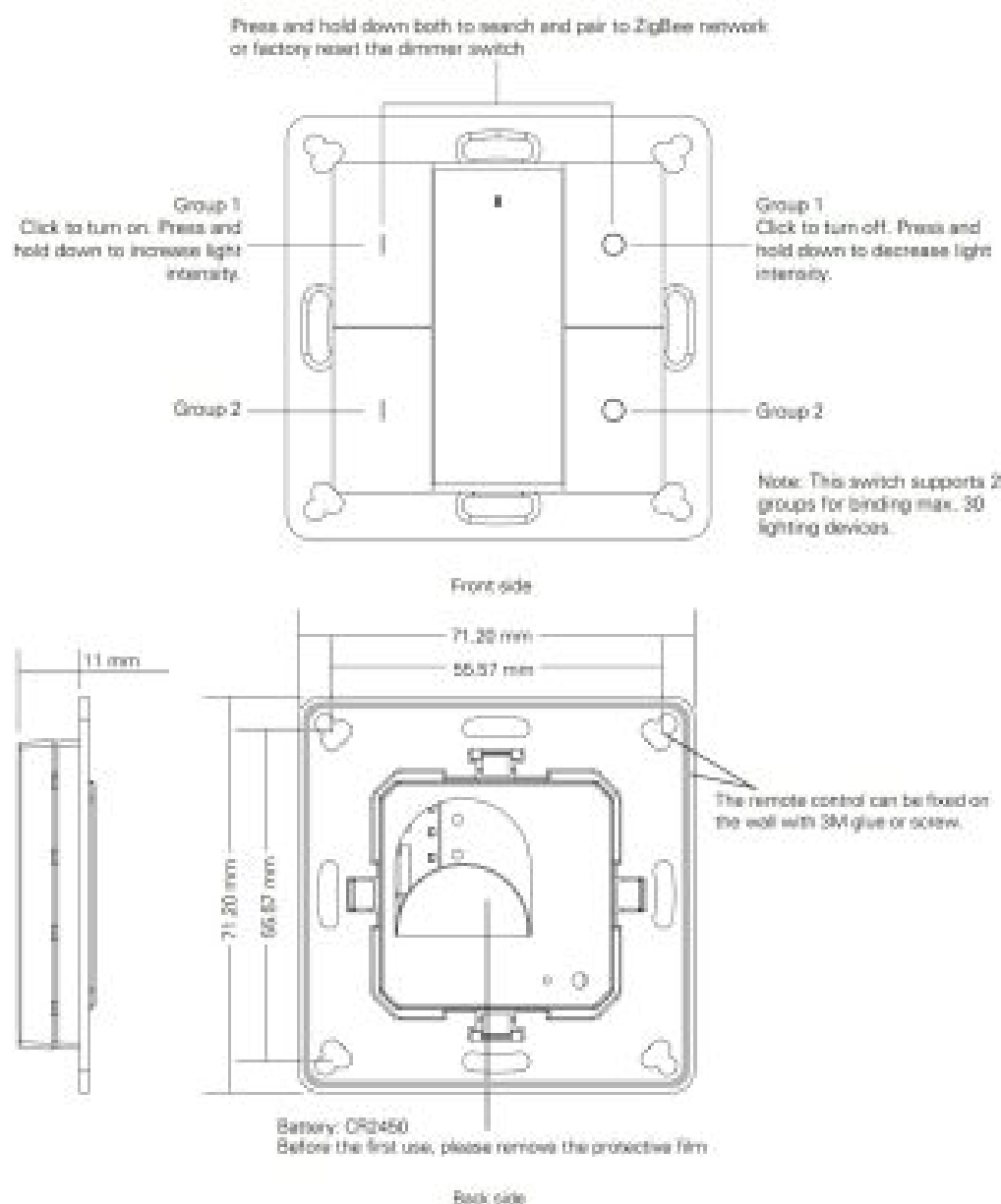


**Important:** Read All Instructions Prior to Installation

## Contents

- [1 Function introduction](#)
- [2 Product Data](#)
- [3 Safety & Warnings](#)
- [4 Operation](#)
- [5 Installation](#)
- [6 Mounting](#)
- [7 Documents / Resources](#)
- [8 Related Posts](#)

## Function introduction



## Product Data

<b>Protocol</b>	ZigBee 3.0
<b>Operation Voltage</b>	3VDC (CR2450)
<b>Transmission Frequency</b>	2.4GHz
<b>Transmission Range (free field)</b>	30m
<b>Protection Type</b>	IP20
<b>Dimming Range</b>	0.1%-100%
<b>Dimensions</b>	71.2×71.2×13.6mm

- ZigBee dimmer switch based on ZigBee 3.0
- Enables to pair ZigBee lighting devices via touchlink commissioning without coordinator
- Supports find and bind mode to pair with ZigBee lighting devices
- Supports 2 groups for binding max. 30 lighting devices
- 2.4 GHz global operation
- Long battery life mesh technology
- Transmission range up to 30m
- Compatible with universal ZigBee Gateway products
- Compatible with universal single color ZigBee lighting devices

**ZigBee Clusters Supported by This Remote Are As Follows:**  
**Input clusters:**

- Basic
- Power Configuration
- Identify
- Diagnostics

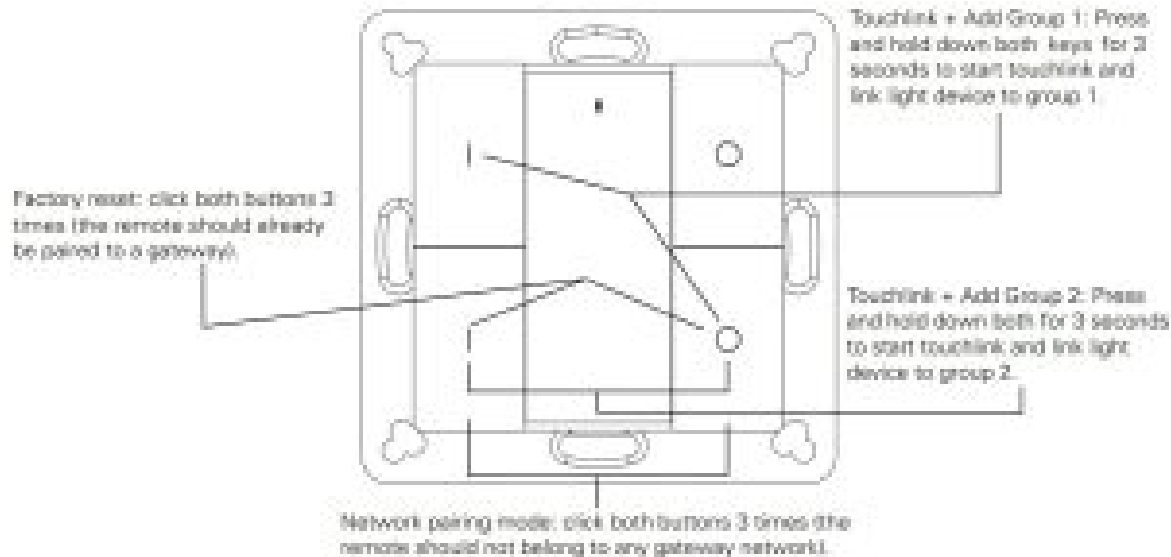
**Output clusters:**

- Identify
- Group
- On/off
- Level control
- Ota

## Safety & Warnings

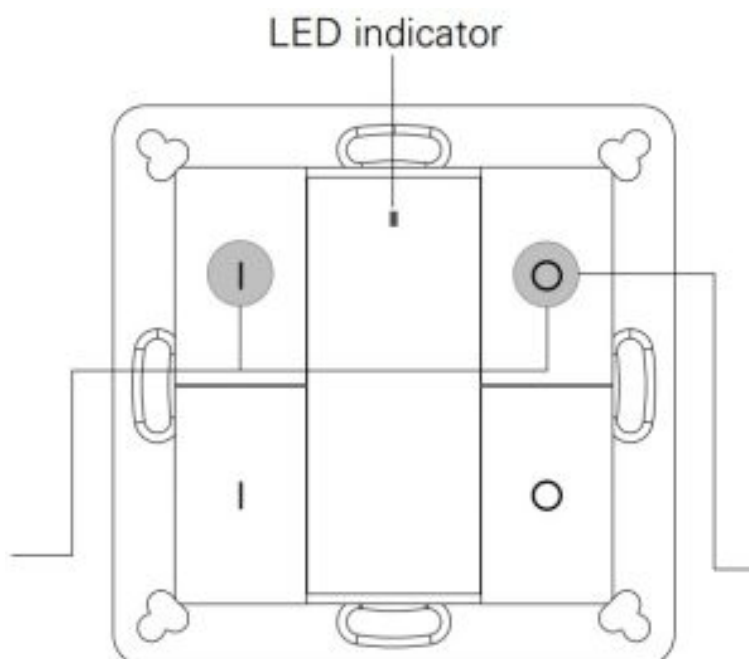
- This device contains a button lithium battery that shall be stored and disposed properly.
- DO NOT expose the device to moisture.

Quick Start (Simplified operation compared to standard operations in the part “Operation”)

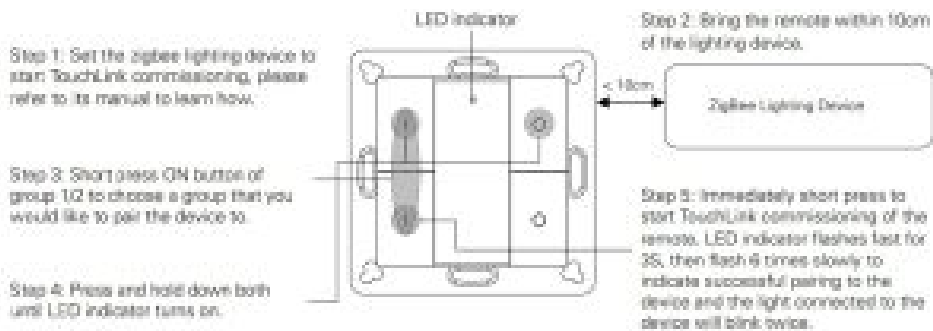


## Operation

1. This ZigBee Dim remote is a wireless transmitter that communicates with a variety of ZigBee compatible systems.  
This transmitter sends wireless radio signals that are used to remotely control a compatible system.
2. This ZigBee remote supports 2 groups for binding max. 30 lighting devices and enables to control single color ZigBee lighting devices.
3. Zigbee Network Pairing through Coordinator or Hub (Added to a Zigbee Network)



4. TouchLink to a Zigbee Lighting Device



### Note:

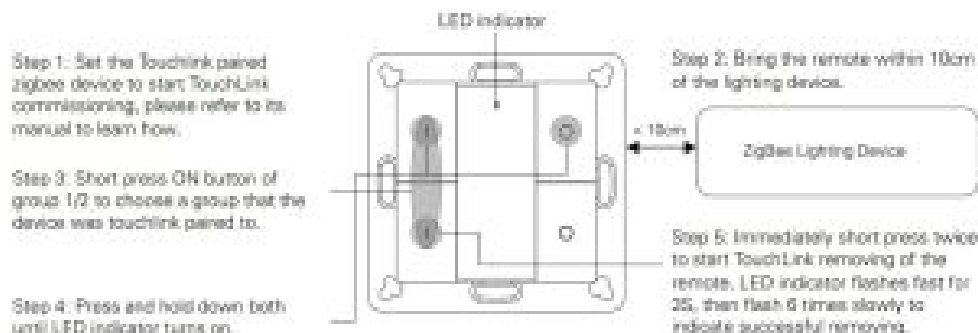
- Directly TouchLink (both not added to a ZigBee network), please first factory reset both the remote and device, each remote can link with max. 30 devices, please make sure the first linked device is always powered on when touchlink the remote with 2nd device and more devices.
- TouchLink after both added to a ZigBee network, each device can link with max. 30 remotes.
- To control by both remote and hub, add both remote and device to network first then TouchLink, after TouchLink, the device can be controlled by the linked remotes and Zigbee hub together.

### 5. Removed from a Zigbee Network through Coordinator or Hub Interface

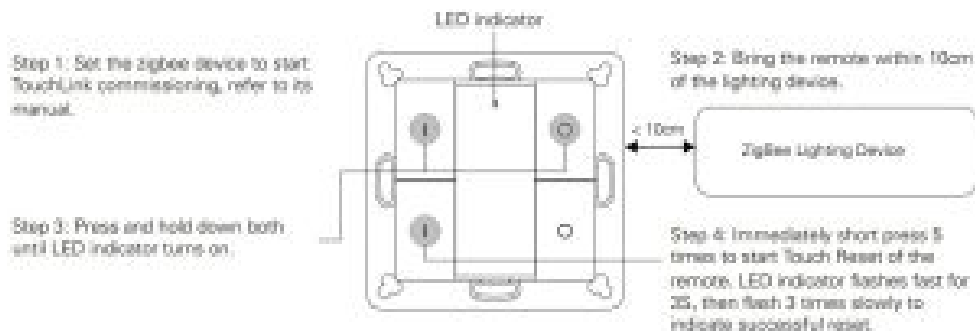


From your ZigBee controller or hub interface, choose to delete or reset the remote as instructed, indicator flashes 3 times quickly to indicate successful removing.

### 6. Factory Reset Manually

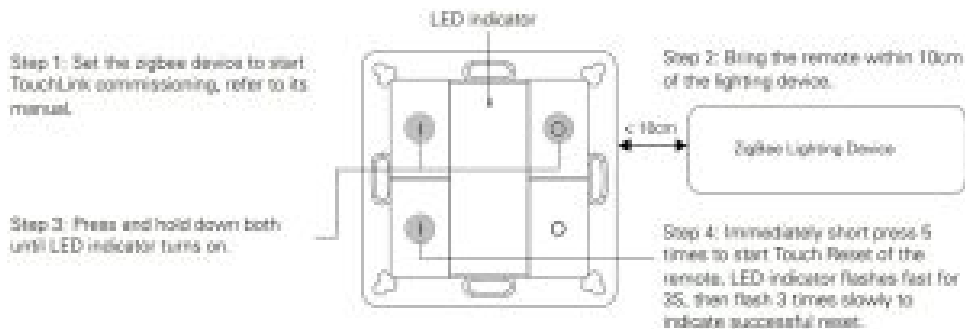


### 7. Remove a Touchlink Paired ZigBee Lighting Device



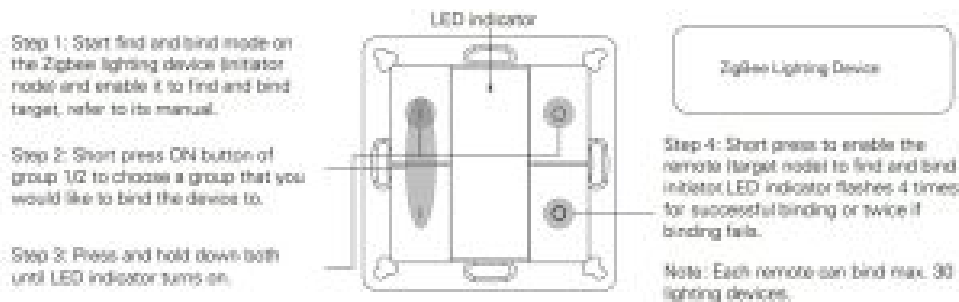
## 8. Factory Reset a Lighting Device (Touch Reset)

**Note:** the device shall be added to a network, the remote added to the same one or not added to any network.

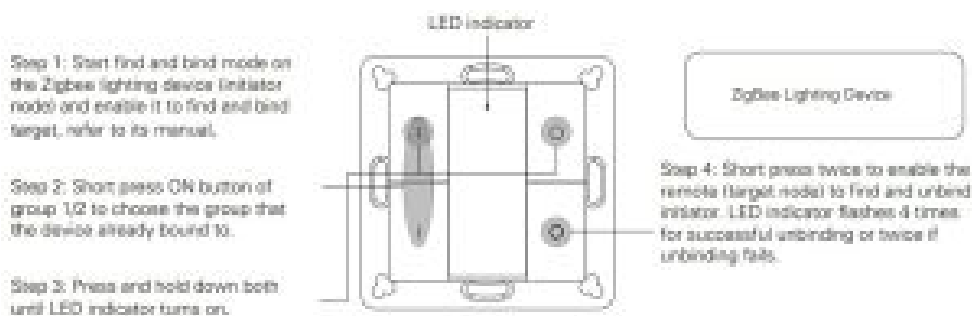


## 9. Find and Bind a Zigbee Lighting Device

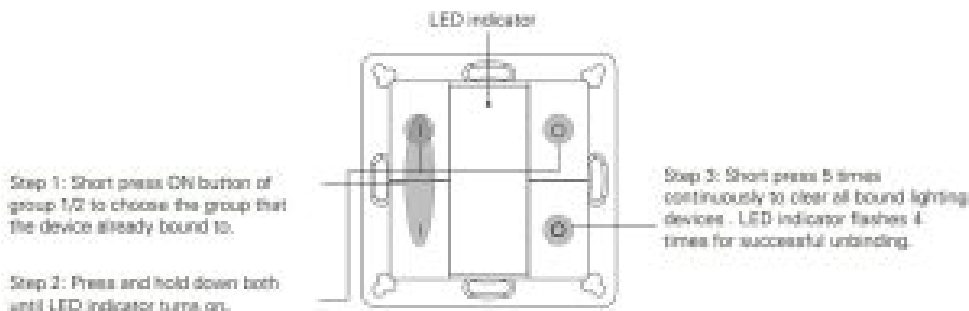
**Note:** Make sure the device and remote already added to the same zigbee network.



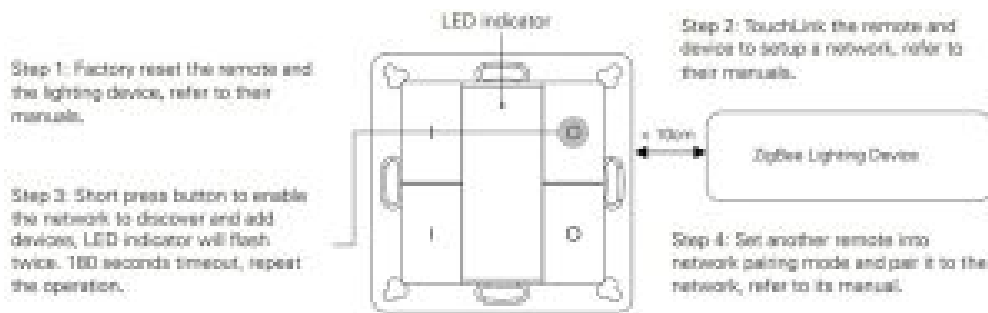
## 10. Find and Unbind a Zigbee Lighting Device



## 11. Clear All Find and Bind Mode Paired Lighting Devices



## 12. Setup a Network & Add Devices to the Network (No Coordinator or Hub Required)



**Step 5:** Add more remotes to the network as you would like.

**Step 6:** Factory reset the lighting devices that you would like to add to the network, refer to their manuals.

**Step 7:** Touchlink to pair the added remotes and lighting devices you would like to add, the devices will be added to the network through Touchlink, refer to their manuals.

### 13. OTA

The remote supports firmware updating through OTA, and will acquire new firmware from zigbee controller or hub every 10 minutes automatically.

14. How to Check Whether the Remote Belongs to a Network or not Short press any button, indicator blinking means the remote has already been added to a network. No blinking of indicator means the remote does not belong to any network.

### 15. Battery Power Monitor Function

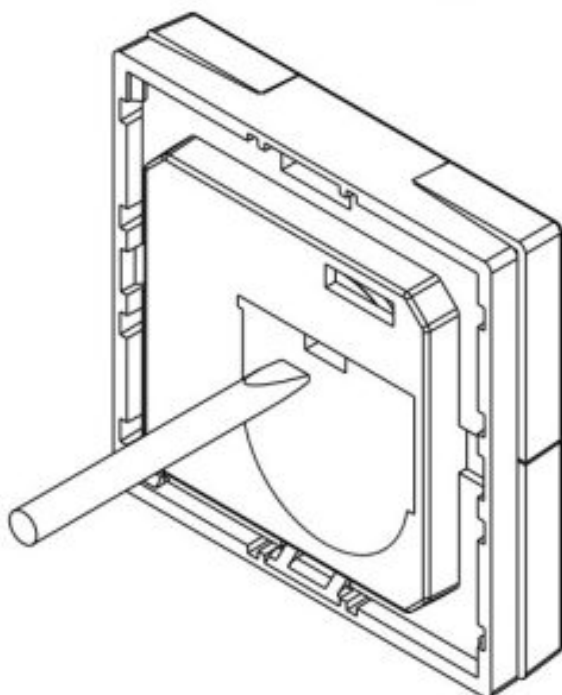
The remote will report battery power value to the coordinator under following situations:

- When powered on.
- When short pressing both **I** and **O** buttons of group 2 simultaneously.
- When operating the switch to send data packets (over 4 hours since last operation).
- When added to the network by a coordinator.

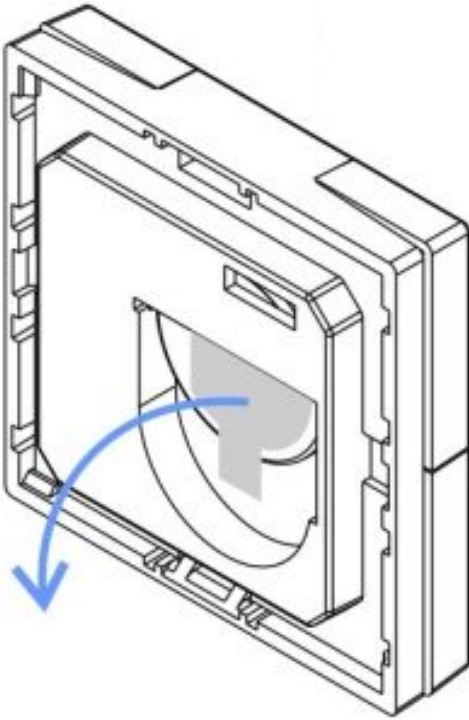
## Installation

### Remove battery insulator

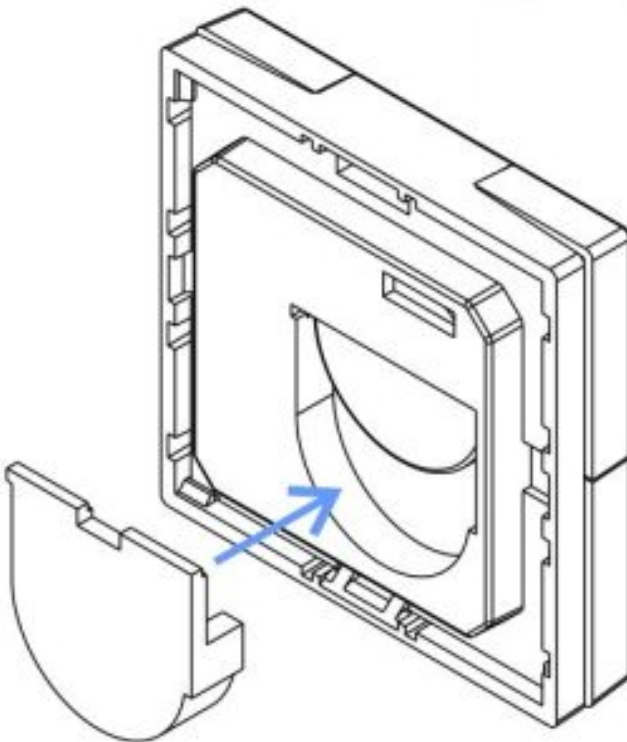
1. Use tool to open the silicone gel battery cover



2. Pull out the battery insulator



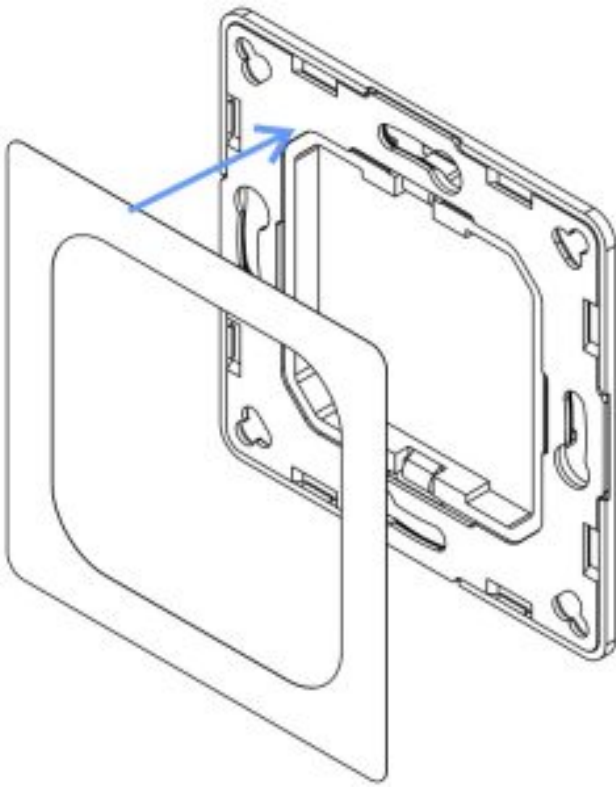
3. Install the silicone battery cover back



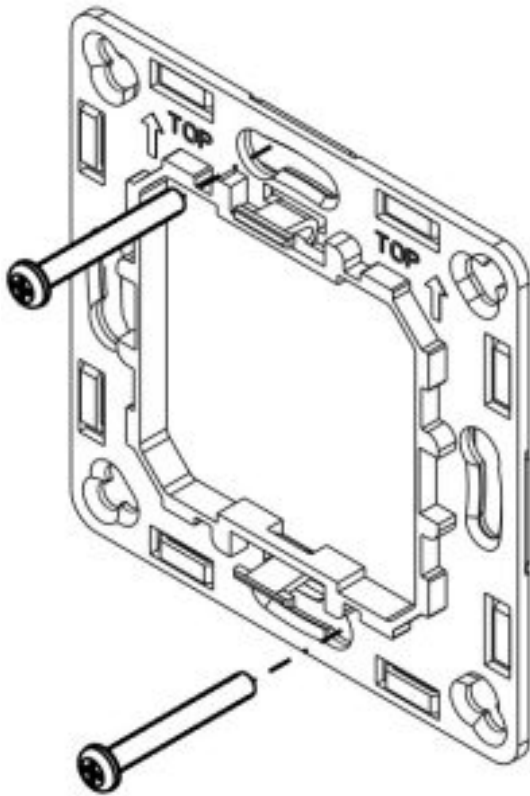
**Install the controller to wall(2 methods)**

- **Method 1:** Stick 3M glue on the back of the bracket and then stick the bracket to the wall.

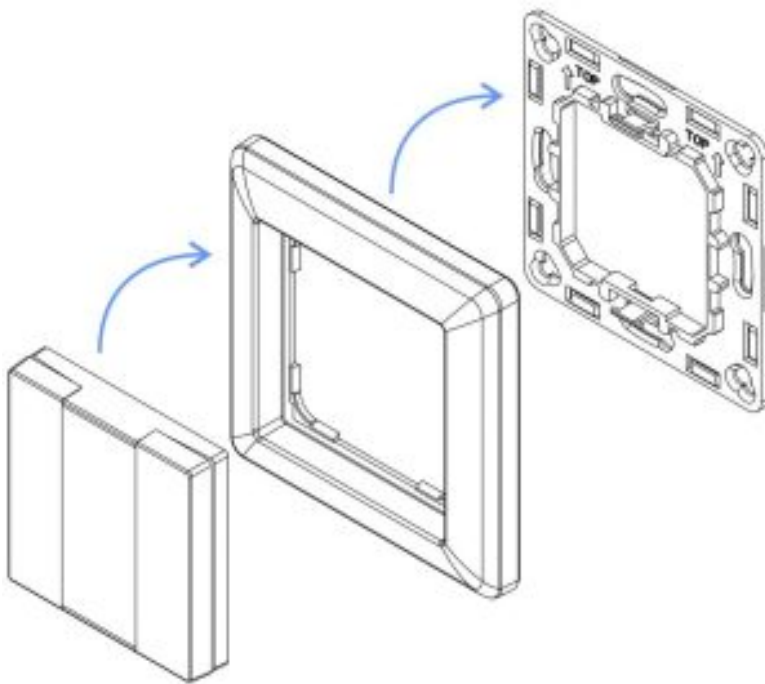




- **Method 2:** Screw the bracket to the wall



- After the bracket is fixed, clip the frame and control part to the bracket in sequence

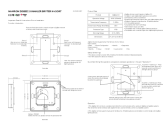


## Mounting

The key part of this controller is an universal one, especially rotary standard switch element that can be integrated in numerous frames by different manufactures as below list:

- **BEKER:** S1, B1, B3, B7 glass
- **GIRA:** Standard55, E2, Event, Esprit
- **JUNG:** A500, Aplus
- **MERTEN:** M-smart, M-Arc, M-Plan

## Documents / Resources

	<p><a href="#">Zigbee NAMRON ZIGBEE 2 KANALER BRYTER K4 SORT</a> [pdf] Instruction Manual Zigbee, NAMRON, ZIGBEE, 2 KANALER BRYTER, K4, SORT</p>
---	--