

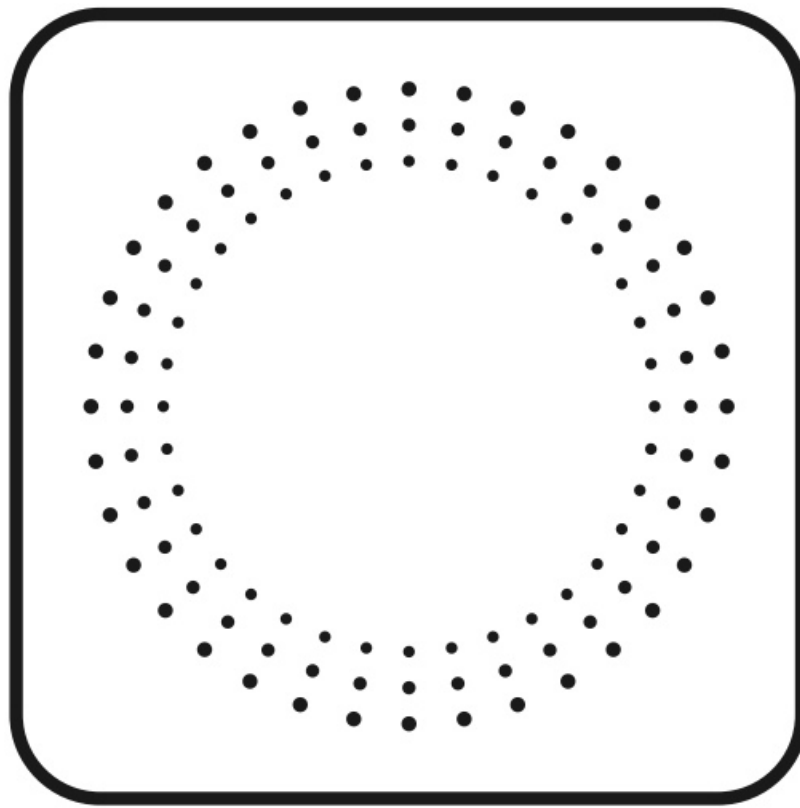


ZigBee MW733Z Triple Touch Switch User Manual

[Home](#) » [zigbee](#) » ZigBee MW733Z Triple Touch Switch User Manual 



User Manual V1.0

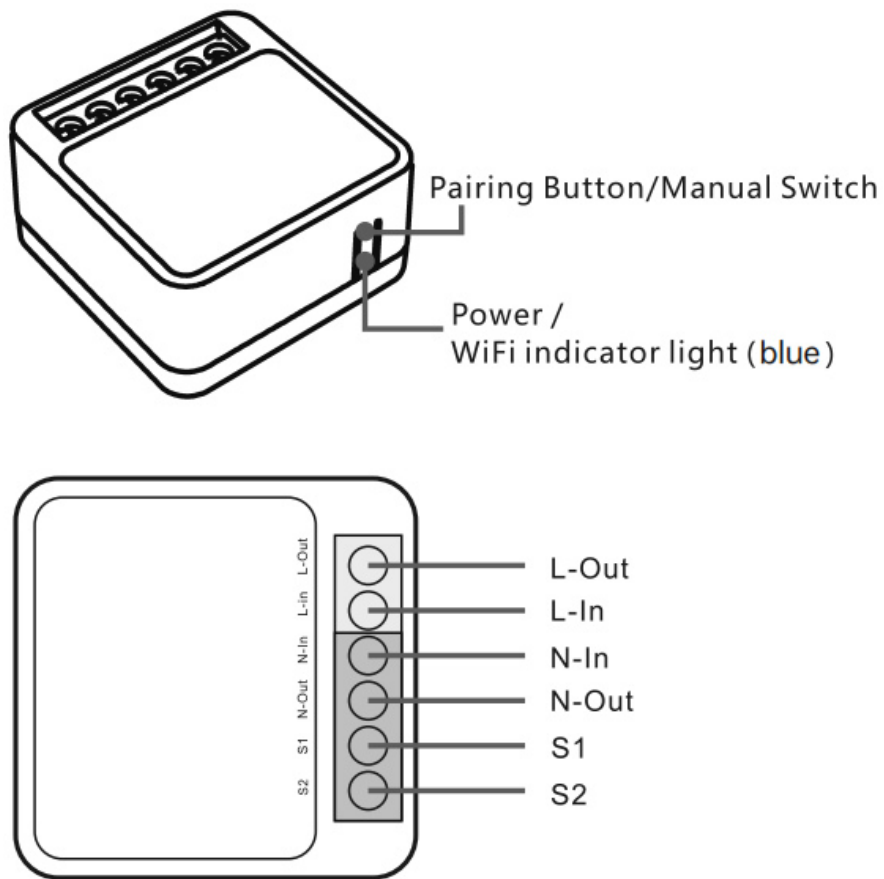


ZigBee Switch

Contents

- [1 Product Introduction](#)
- [2 Specifications](#)
- [3 Installation instructions](#)
- [4 Configuration Steps](#)
- [5 Clearing RM2.4G remote controller](#)
- [6 Documents / Resources](#)
 - [6.1 References](#)

Product Introduction



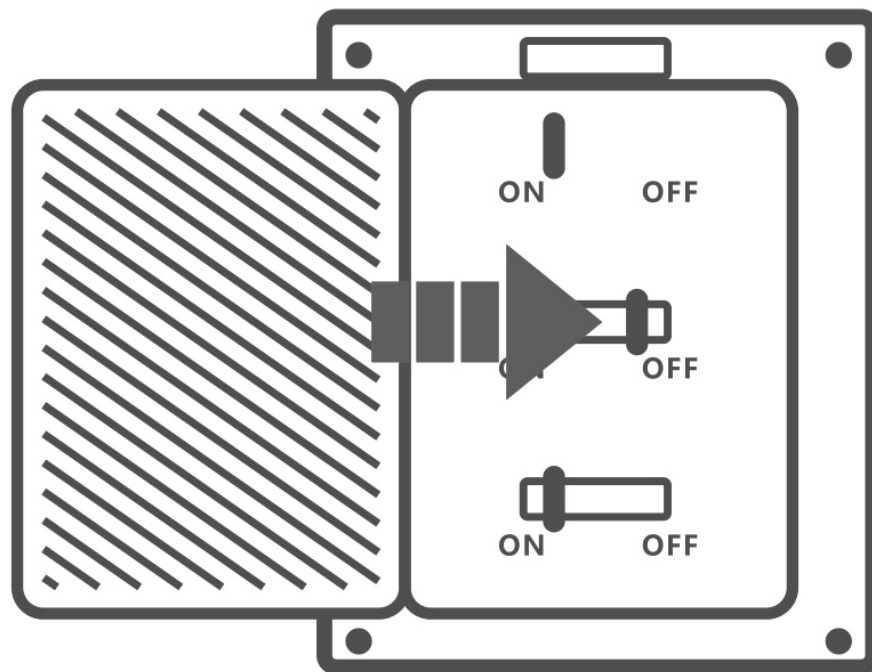
ⓘ The device weight is less than 1 k g. The installation height of less than 2 m is recommended.

Specifications

Name	ZigBee Switch
Input	AC 100-240V 50/60Hz
Output	AC 100-240V 50/60Hz
RF Standard	Android 5.0 & iOS 10 or higher
Frequency Standard	IEEE 802.15.4
Material	PC
Dimension	41*41*21.3mm

Installation instructions

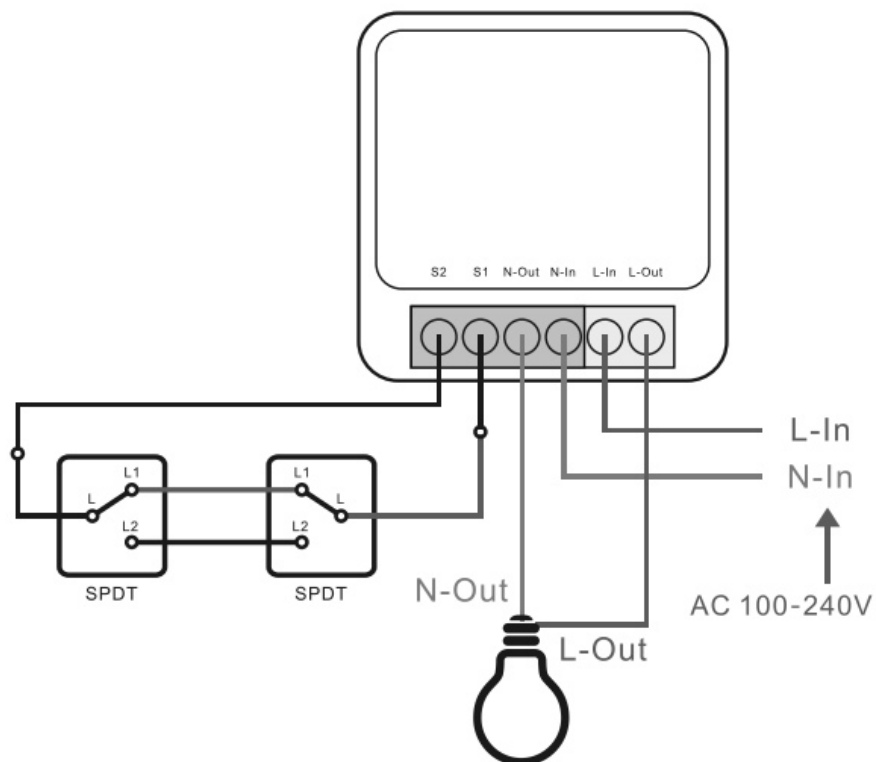
1. Power off



⚠ To avoid electric shocks, please consult the dealer or a qualified professional for help when installing and repairing.

2. Wiring instruction

⚠ Make sure correct wiring before powering the device on.



⚠ S1/S2 can connect with the rocker light switch or doesn't connect. To ensure safety, do not connect the neutral wire and live wire to it.

Configuration Steps



Works with Amazon Alexa



1. Confirm that the indicator light of the ZigBee switch is blinking, If the indicator light is always on, press and hold the function key until the indicatorThe light is flashing or the ZigBee switch is powered off, Then power on for 3-8s, repeat five times, then re-enter the configurationSet state.
2. Ask: "Alexa, discover my devices".
3. Wait for the indicator light of the ZigBee switch to be on. At this time, the deviceConnected to echo plus or second-generation echo show.
4. Ask,"Alexa,turn off first light."This will turn the Controller off.
5. You can use the Amazon Alexa APP to add group, routines or modify device names suchas bedroom light or office switch,At thispoint you can use the Alexa APP or Voice to control the devices.



works with
SmartThings

works
with

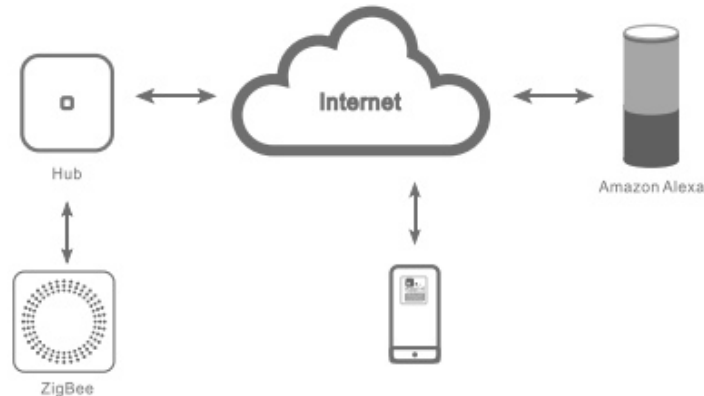
alex
a

Works with Sansung SmartThings hub & Amazon Alexa



1. Confirm that the indicator light of the ZigBee switch is blinking, If the indicator light is always on, press and hold the function key until the indicatorThe light is flashing or the ZigBee switch is powered off, Then power on for 3-8s, repeat five times, then re-enter the configurationSet state.

2. Open the SmartThings APP and add the Controller. When the red indicator is always on, the Controller has been added to the SmartThings hub. If the APP does not recognize the device type, please refer to the SmartThings Config.pdf document.
3. Enable SmartThings Skill in the Alexa APP or alexa.amazon.com
4. Ask, "Alexa, discover my devices." can add Controller to Amazon Smart Home.
5. You can use SmartThings APP or Alexa APP to add group, routines or modify device names such as bedroom light or office switch.
6. At this point you can use the Alexa APP or Voice to control the devices.

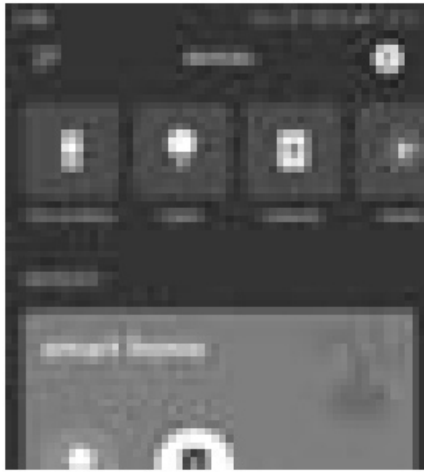


SmartThings APP and Alexa APP Operation(Add device,group,routines) **Alexa APP**

1. In the Alexa APP interface click ' + ' icon, You can add devices and groups. In The device list interface you can control or modify the device type and name, as shown in the following picture



2. In the Alexa APP Smart Home interface you can operate the devices conveniently

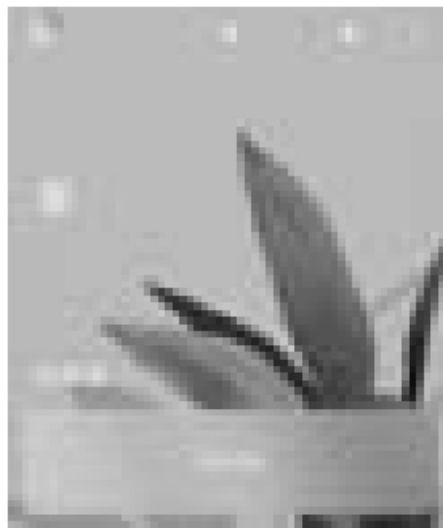


3. In the Alexa APP Routines interface you can set up some devices and events (Ask, “Alexa, good morning.” It will turn on the bedroom lights, open the curtains, and forecast the weather, traffic conditions, to-do items, etc.)



SmartThings APP

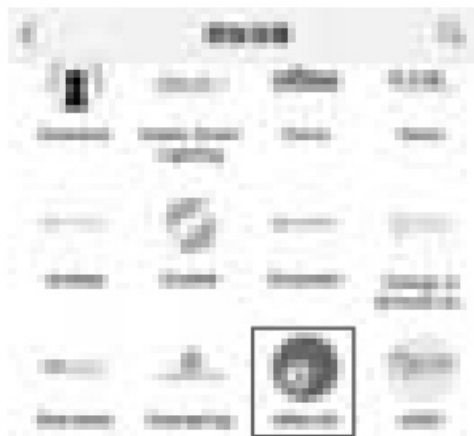
1. Click “+” to add or reset the device at the upper right corner on the all device list screen in the Smart Things APP.



2. Select “Add Device” in the pop-out window



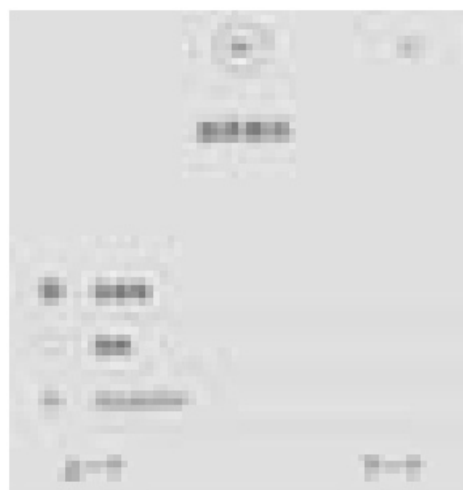
3. Select 'eWeLink' icon to add device on the add device screen



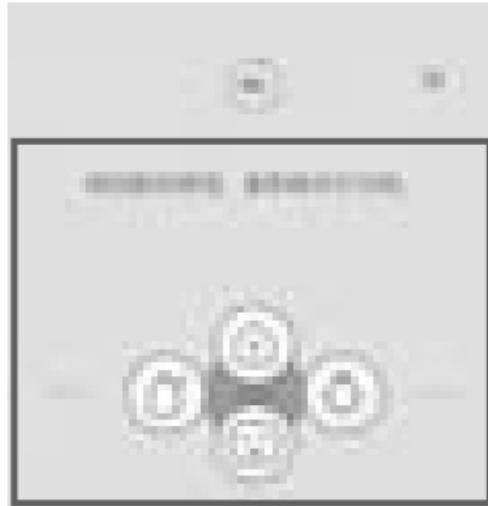
4. Click "Next" on the default hub connection interface



5. Choose the room you want after entering this interface, or click "add new room", then click "Next"



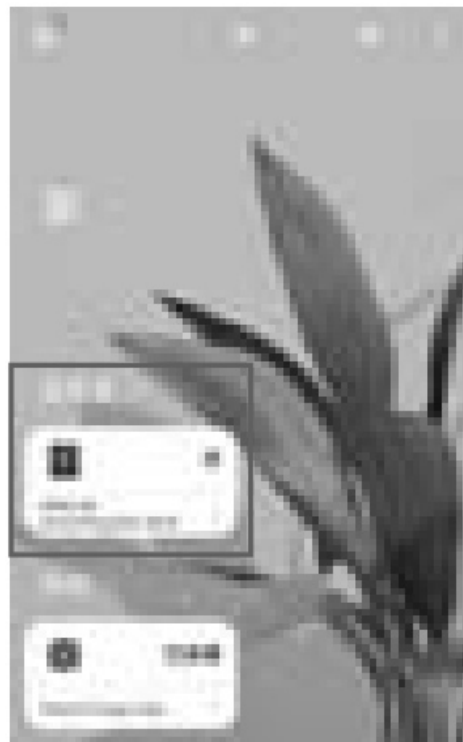
6. Do what app tells you and wait patiently



7. After the device is successfully connected , name the device and click “Done”



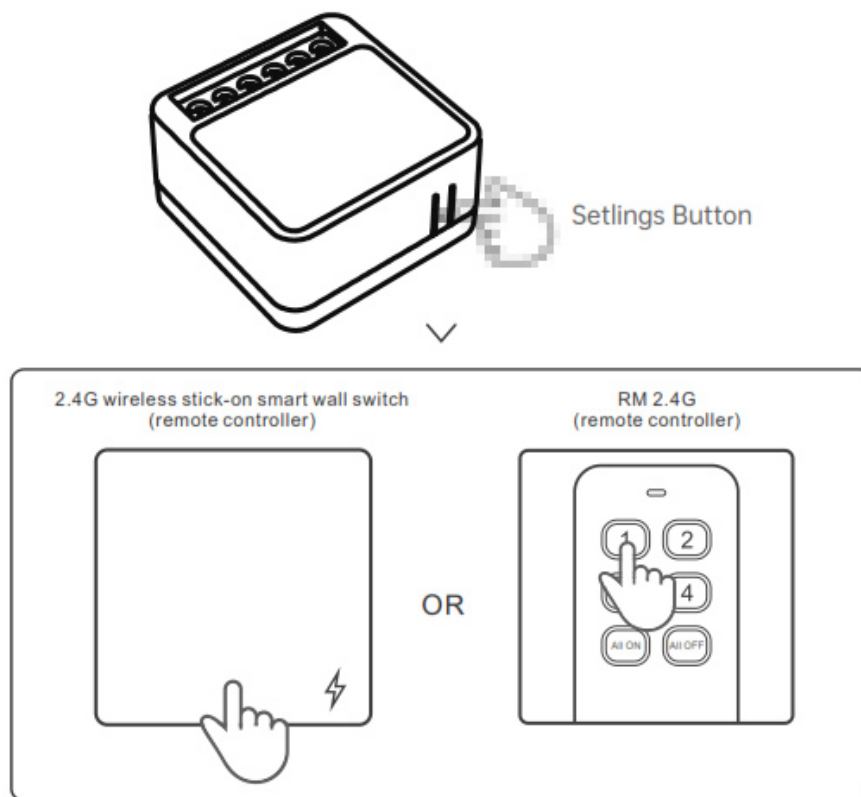
8. Return to the main interface, device has been added, and you will see the device and you can begin to set.



Support Gateway Range:

- eWeLink Hub
- Philips Hue Hub
- IKEA Hub
- SmartThings Hub
- ECHO Plus

Pairing with RM2.4G remote controller

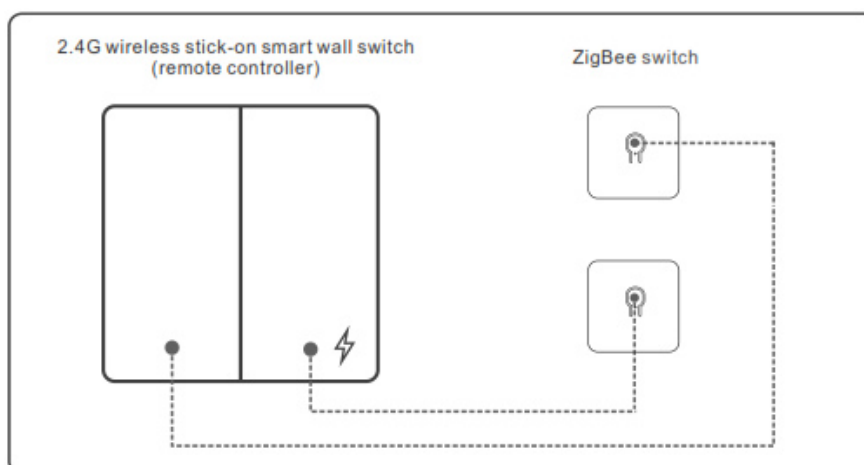


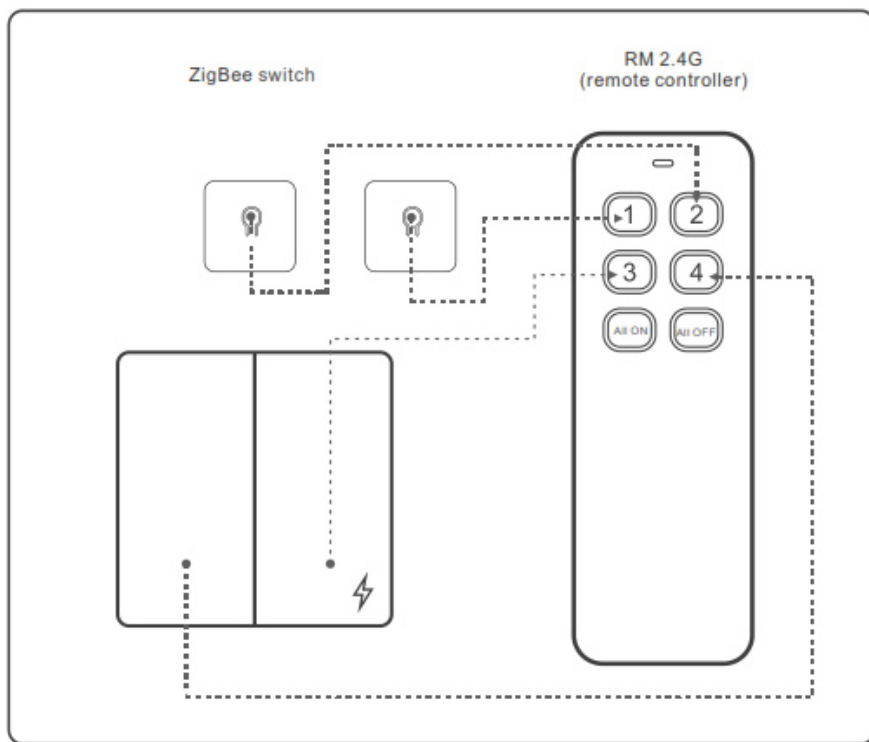
When the device is powered on, press the button on the device 6 times continuously and quickly. If the indicator blinks once quickly, the device enters the pairing state. Then press the remote control button that needs to be paired 4 times and the equipment switch once means matching for success.

(Valid time of pairing status is 5S)

⚠ Please refer to the user manual of remote controllers for detailed instruction and use.

⚠ The RM2.4G remote controller can learn multiple 2.4G devices.





The two buttons at the bottom named 'All ON' and 'All OFF' allow you to turn on or off all the buttons above and they cannot learn any other functions.

You can also purchase our eWeLink-Remote Smart Switch (1/2/3 gang single live wire) as needed.

Clearing RM2.4G remote controller



When the device is powered on, press the device button 9 times continuously, the device indicator lightBlinks 4 times quickly, indicating that the code is cleared successfully.

This device complies with part 15 of the FCC Rules. Operation is subject to the following two conditions: (1) This device may not cause harmful interference, and (2) this device must accept any interference received, including interference that may cause undesired operation.

FCC warning:

Any Changes or modifications not expressly approved by the party responsible for compliance could void the user's authority to operate the equipment.


Note: This equipment has been tested and found to comply with the limits for a Class B digital device, pursuant to part 15 of the FCC Rules. These limits are designed to provide reasonable protection against harmful interference in a residential installation. This equipment generates uses and can radiate radio frequency energy and, if not installed and used in accordance with the instructions, may cause harmful interference to radio communications. However, there is no guarantee that interference will not occur in a particular installation. If this equipment does cause harmful interference to radio or television reception, which can be determined by turning the equipment off and on, the user is encouraged to try to correct the interference by one or more of the following measures:

- Reorient or relocate the receiving antenna.
- Increase the separation between the equipment and receiver.
- Connect the equipment into an outlet on a circuit different from that to which the receiver is connected.
- Consult the dealer or an experienced radio/TV technician for help.

This equipment complies with FCC radiation exposure limits set forth for an uncontrolled environment. This equipment should be installed and operated with minimum distance 20cm between the radiator & your body.



Documents / Resources

	ZigBee MW733Z Triple Touch Switch [pdf] User Manual MW733Z Triple Touch Switch, MW733Z, Triple Touch Switch, Touch Switch, Switch
---	--

References

- [User Manual](#)

[Manuals+.](#) [Privacy Policy](#)

This website is an independent publication and is neither affiliated with nor endorsed by any of the trademark owners. The "Bluetooth®" word mark and logos are registered trademarks owned by Bluetooth SIG, Inc. The "Wi-Fi®" word mark and logos are registered trademarks owned by the Wi-Fi Alliance. Any use of these marks on this website does not imply any affiliation with or endorsement.