



[Home](#) » [zigbee](#) » **Zigbee DC 1CH WiFi Switch Module Instruction Manual** 

Contents [[hide](#)]

- [1 Zigbee DC 1CH WiFi Switch Module](#)
- [2 Specifications](#)
- [3 Product Overview](#)
- [4 TECHNICAL SPECIFICATIONS](#)
- [5 INSTALLATION](#)
- [6 MANUAL OVERRIDE](#)
- [7 Product Usage Instructions](#)
- [8 FAQ](#)
- [9 Documents / Resources](#)
 - [9.1 References](#)



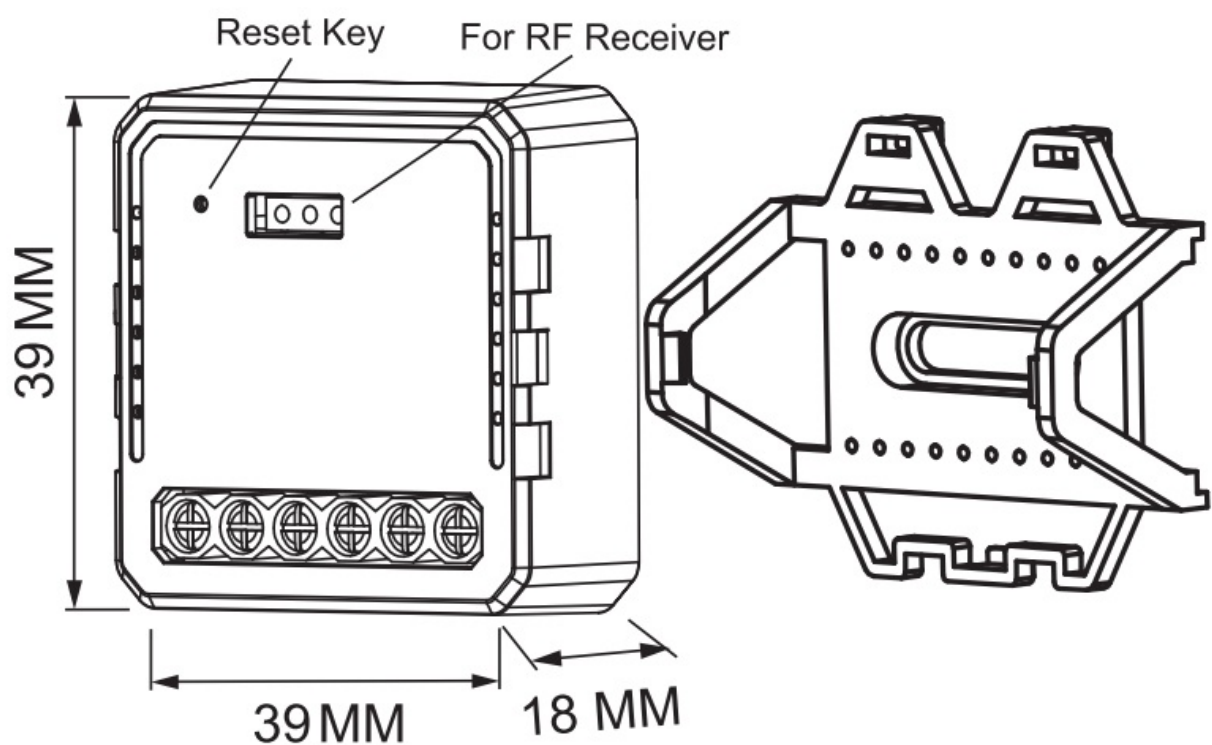
Zigbee DC 1CH WiFi Switch Module




Specifications

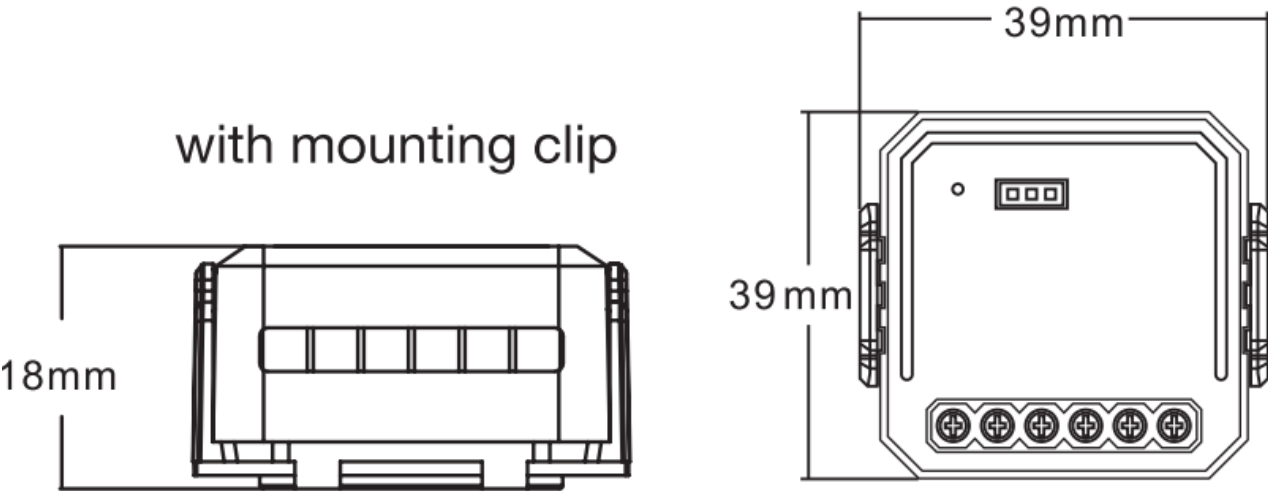
- **Model:** Switch Module XYZ-1000
- **Dimensions:** 5.5 x 3.5 x 1.2 inches
- **Weight:** 0.3 lbs
- **Compatibility:** Compatible with devices supporting XYZ protocol
- **Power:** Requires 12V DC power supply

Product Overview

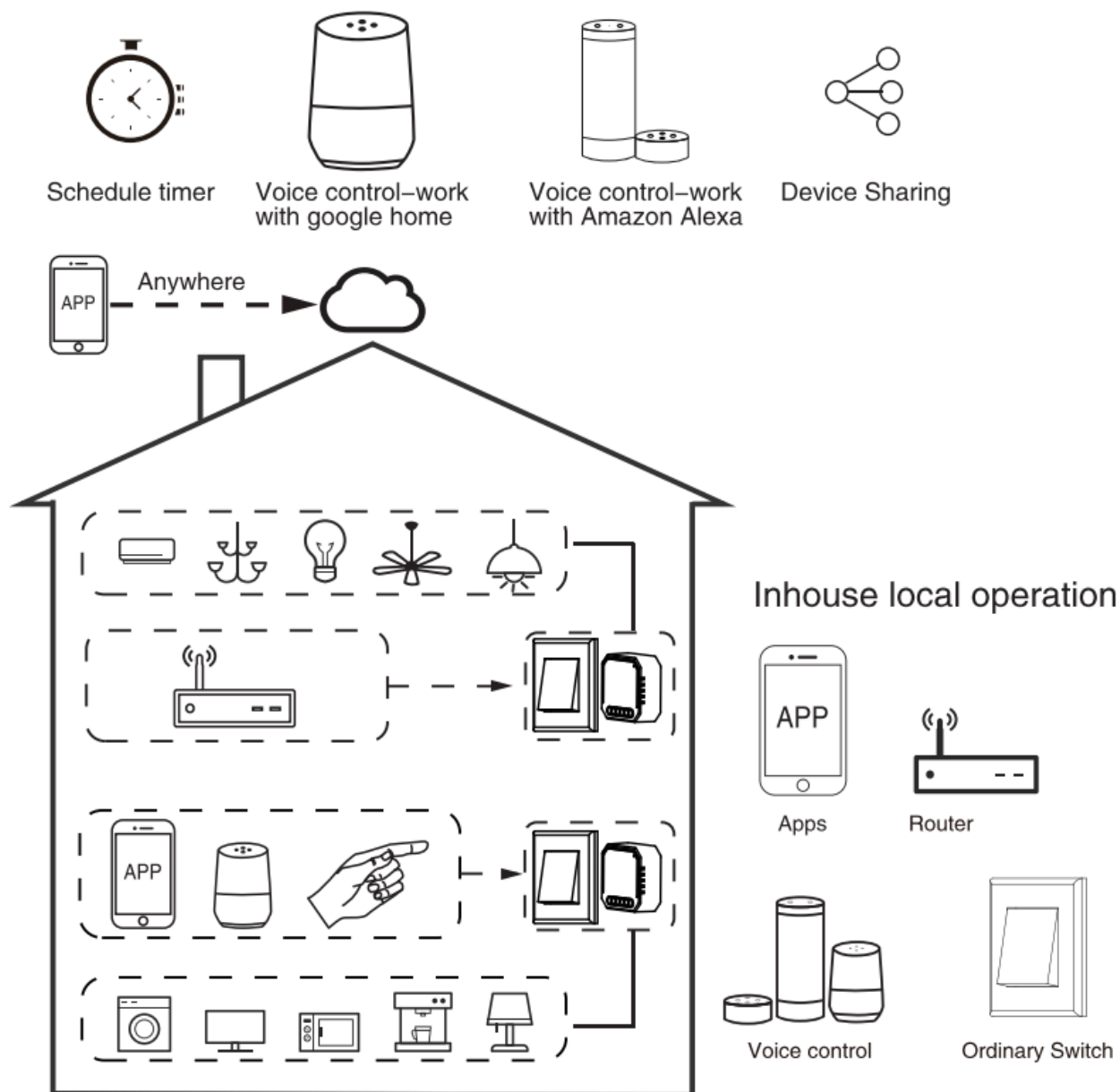


TECHNICAL SPECIFICATIONS

Product type	1CH WIFI Switch Module–DC
Voltage	AC100–240V 50/60Hz
Max. load	LED 150W  5A
Operation frequency	2.412GHz–2.484GHz
Operation temp.	–10°C + 40
Protocol	WIFI IEEE 802.11b/g/n
Operation range	<100m
Dims (WxDxH)	39 x39 x18 mm
IP rating	IP20
Warranty	2years
Certificates	CE ROHS



Global international operation & Wherever You are.All-in-one Mobile App



INSTALLATION

warnings:

1. Installation must be carried out by a qualified electrician in accordance with local regulations
2. Keep the device out of reach of children.
3. Keep the device away from water, damp or hot environments.
4. Install the device away from strong signal sources such as microwave oven that may cause signal interruption, resulting to abnormal operation of the device.
5. Obstruction by a concrete wall or metallic materials may reduce the effective operation range of the device and should be avoided
6. Do NOT attempt to disassemble, repair or modify the device.

MANUAL OVERRIDE

The switch module terminal reserves the access manual override function for the end—user to switch on/off. Switch on/off for permanent on/off function.

Notes:

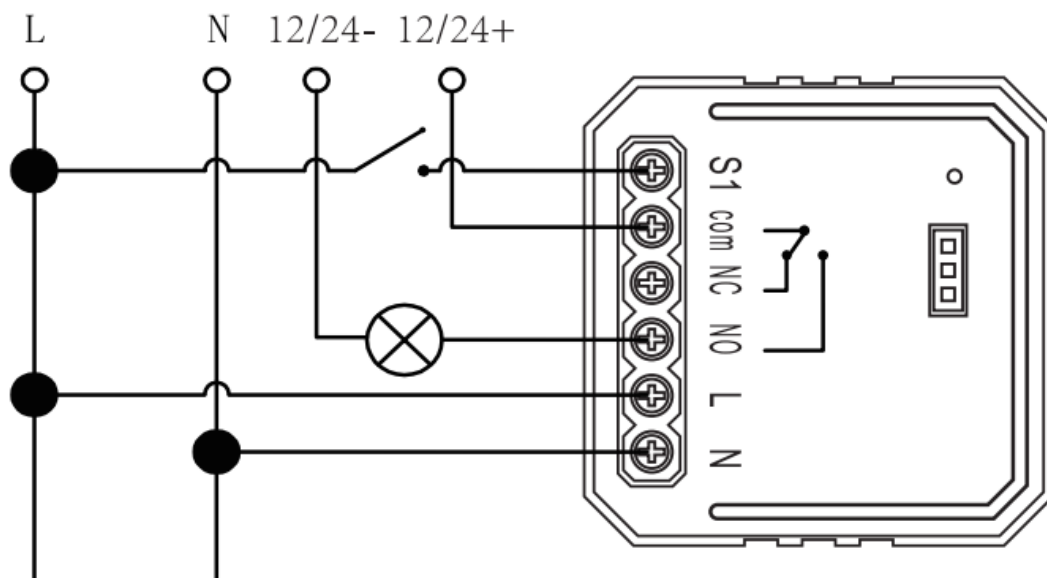
- 1) Both the adjustment on the App and the switch can overwrite each other; the last adjustment remains in memory.
- 2) The App control is synchronized with the manual switch.

Wiring Instructions and Diagrams

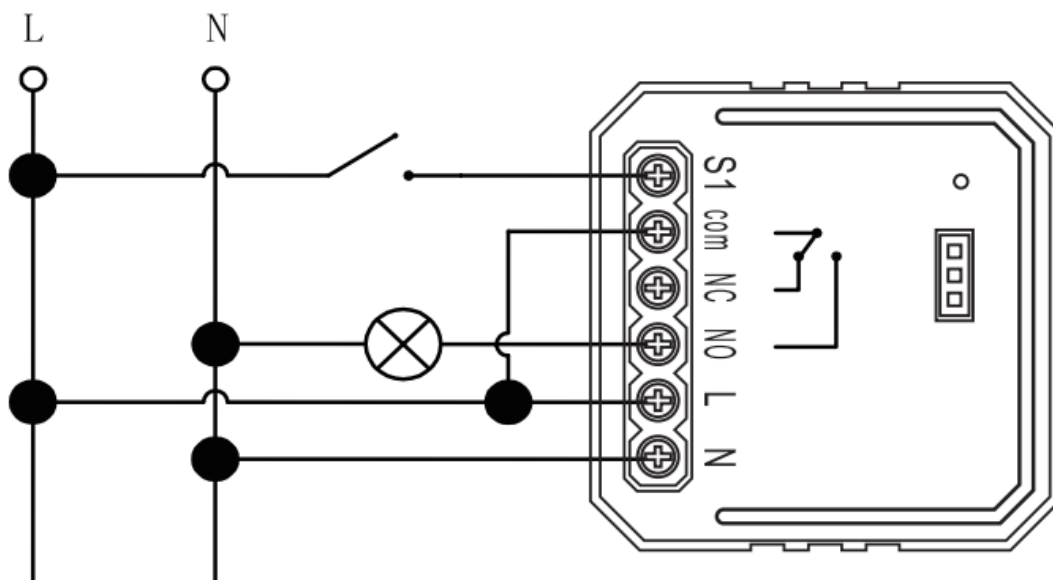
1. Turn off the power supply before carrying out any electrical installation work.
2. Connect wires according to the wiring diagram.
3. Insert the module into the junction box.
4. Turn on the power supply and follow the switch module configuration instructions.

Notes: Take your smartphone close to the switch module when you're configuring, and make sure you have a minimum. 50% Wi-Fi signal.

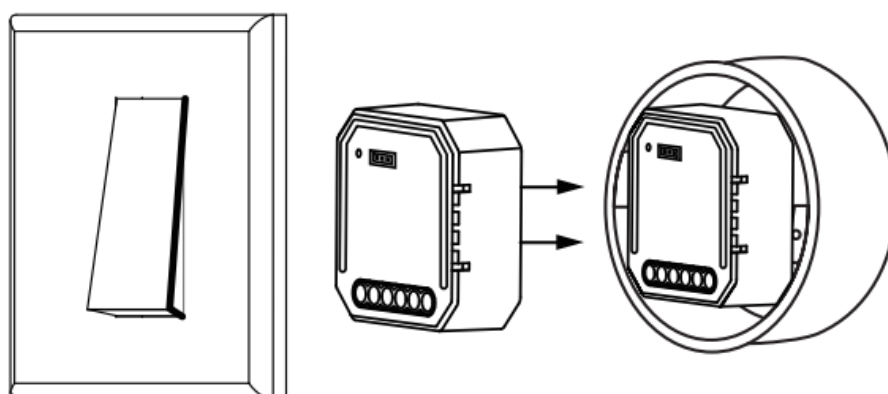
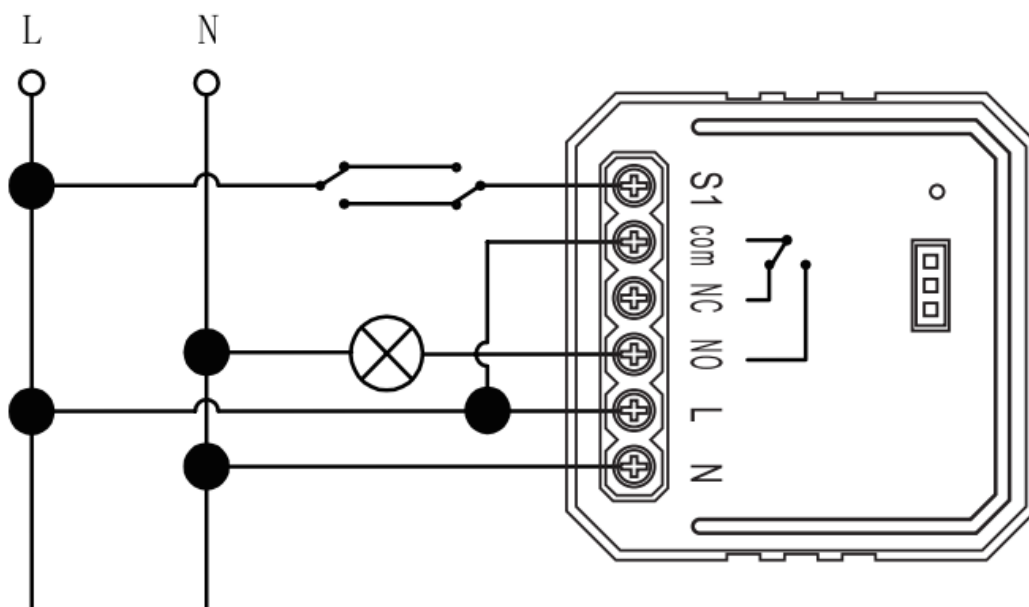
Low-voltage lamp wiring diagram



High voltage lamp wiring diagram



Double Switch



Product Usage Instructions

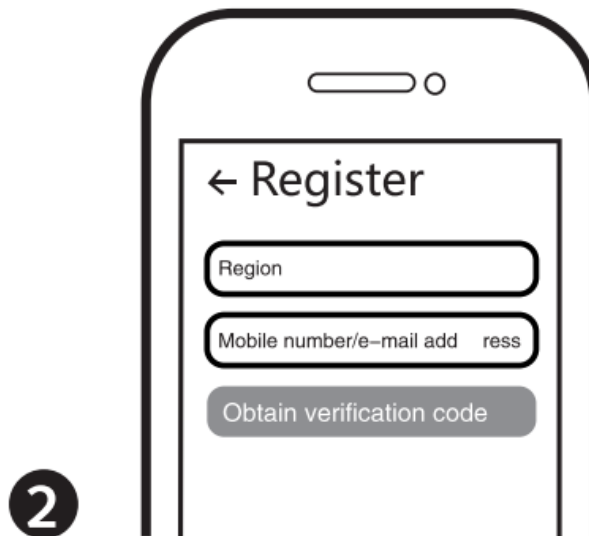
1. Scan the QR code to download Tuya Smart App, or you can also search the keyword “Tuya Smart” at App Store or Google Play to download App.

APP USER MANUAL

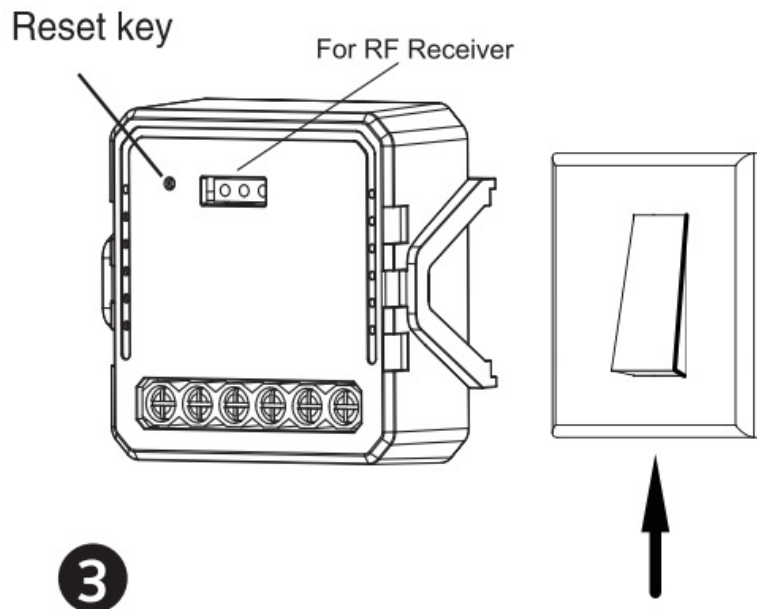


IOS APP / Android APP

2. Log in or register your account with your mobile number or e—mail address. Type in the verification code sent to your mobile or mail, then set your login password. Click “Create Family” to enter into the APP.

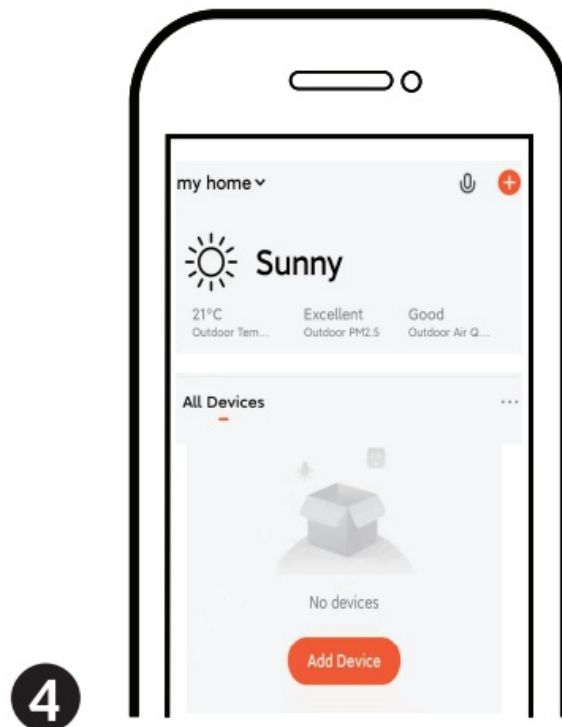


3. After the wiring of switch module is done, press the reset key for about 10 seconds or turn on/off the traditional switch for 5 times until the indicator light inside the module is flashing quickly for pairing.

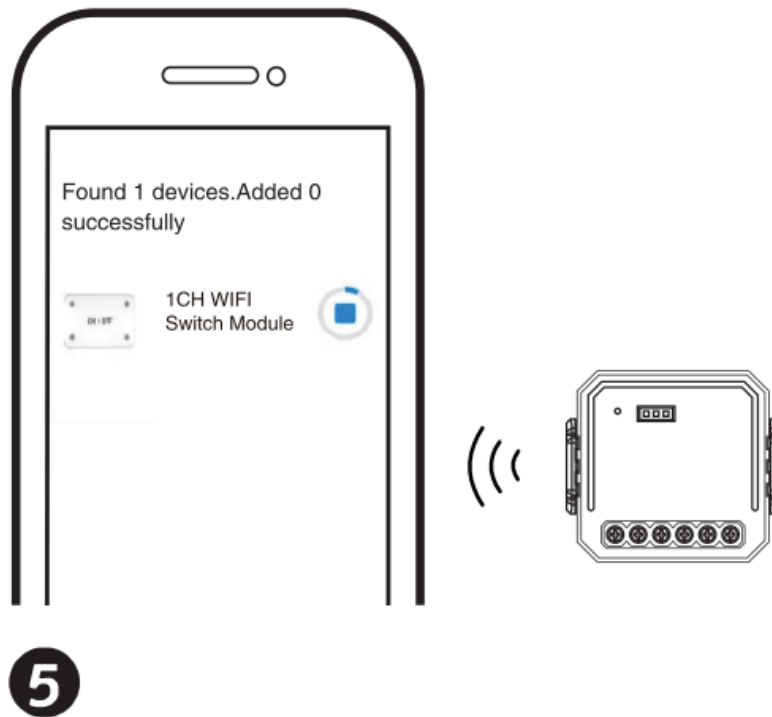


4. Support multi—protocol matching: WIFI/Bluetooth.

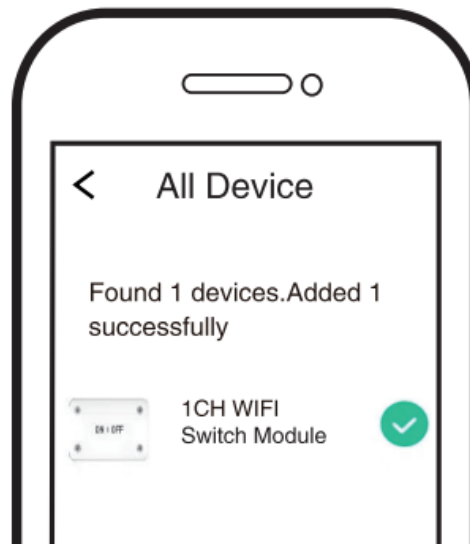
1. Turn on Bluetooth, click “+” , follow the on—screen instructions for pairing.



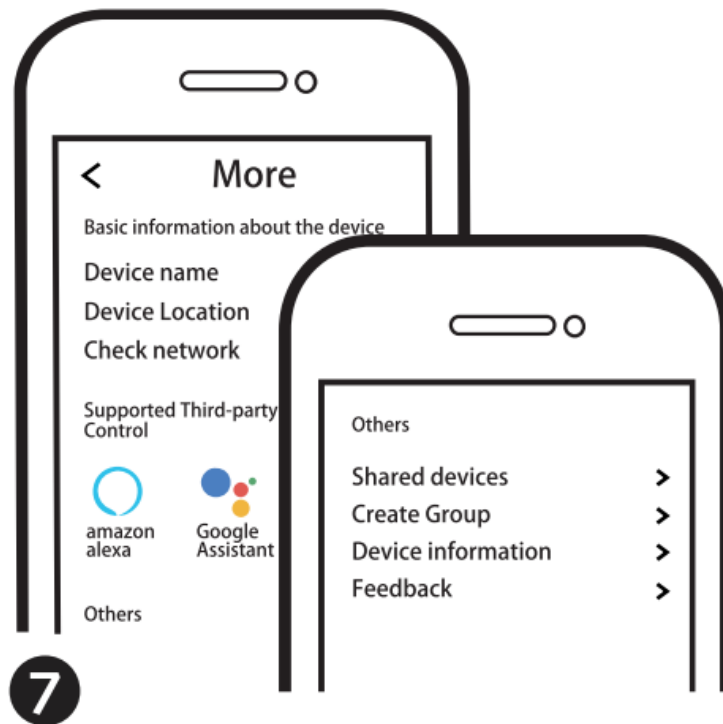
5. The connecting will take about 10—120 seconds to complete depending on your network condition.



6. Finally, you can control the device via your mobile phone.



7. Connect to Amazon Alexa or Google Assistant for voice control, or share the devices with your family or friends.



8. Enjoy your smart life of home automation for lighting control by using our All-in-one mobile app wherever you are in the world or simply by voice control when you are sitting at home comfortably.

FAQ

Q1: What should I do if I can't configure the switch module?

a. Please check whether device is powered on. b. Make sure your mobile and switch module are under the same 2.4 Ghz WIFI network. c. Whether it's in good internet conditions. d. Make sure the password entered in App is correct e. Make sure the wiring is correct.

Q2: What device can be connected to this WIFI switch module?

Most of your household electrical appliances can be such as lamps, laundry machine, coffee maker, etc.

Q3: What happens if the WIFI goes off?

You can still control the device connected the switch module with your traditional

switch and once WIFI is active again the device connected to module will connect automatically to your WIFI network.


Q4: What should I do if I change the WIFI network or change the password?

You have to re-connect our Wi-Fi switch module to the new Wi-Fi network accordingly as per the App User Manual.

Q5: How do I reset the device?

Power on/off device for 5 times until the indicator light flash.

Documents / Resources

	Zigbee DC 1CH WiFi Switch Module [pdf] Instruction Manual DC 1CH WiFi Switch Module, WiFi Switch Module, Switch Module, Module
---	---

References

- [User Manual](#)

📁 DC 1CH WiFi Switch Module, Module, Switch Module, WiFi Switch Module,
📁 zigbee Zigbee

Leave a comment

Your email address will not be published. Required fields are marked *

Comment *

Name

Email

Website

☐ Save my name, email, and website in this browser for the next time I comment.

Post Comment

Search:

e.g. whirlpool wrf535swhz

Search

[Manuals+](#) | [Upload](#) | [Deep Search](#) | [Privacy Policy](#) | [@manuals.plus](#) | [YouTube](#)

This website is an independent publication and is neither affiliated with nor endorsed by any of the trademark owners. The "Bluetooth®" word mark and logos are registered trademarks owned by Bluetooth SIG, Inc. The "Wi-Fi®" word mark and logos are registered trademarks owned by the Wi-Fi Alliance. Any use of these marks on this website does not imply any affiliation with or endorsement.