

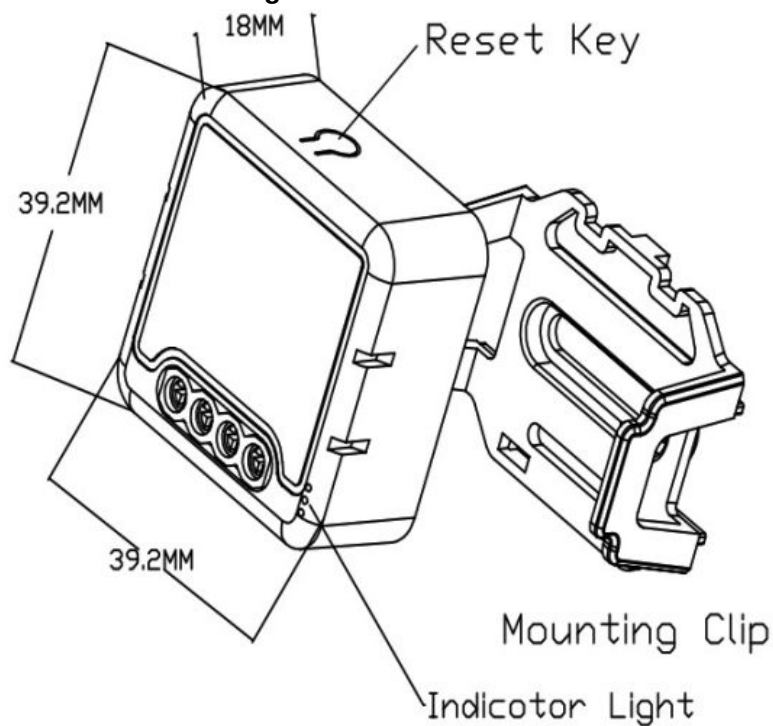


Zigbee 1Ch Universal Smart Switch Instruction Manual

[Home](#) » [zigbee](#) » Zigbee 1Ch Universal Smart Switch Instruction Manual 



INSTRUCTION MANUAL
1CH,2CH,3CH,4CH
Zigbee Switch Module



RoHS



Contents

1 TECHNICAL SPECIFICATIONS

2 FAQ

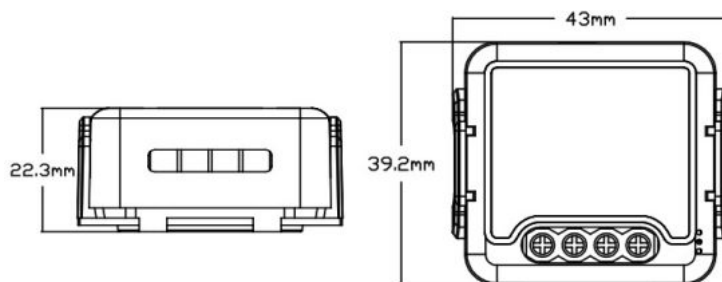
3 Documents / Resources

3.1 References

TECHNICAL SPECIFICATIONS

Product type	Zigbee Switch Module
Voltage	AC100-240V 50/60Hz
Max. load	☀ 1CH: 10A/16A 2CH: 2x5A 3CH: 3x3.3A 4CH: 4x2.5A
Operation frequency	2.405GHz-2.480GHz
Operation temp.	-10 °C + 40°C
Protocol	IEEE802.15.4
Operation range	<100m
Dims (WxDxH)	39.2×39.2×18 mm
IP rating	IP20
Warranty	2years
Certificates	CE ROHS

With mounting clip



INSTALLATION

⚠ Warnings:

1. Installation must be carried out by a qualified electrician in accordance with local regulations.
2. Keep the device out of reach of children.
3. Keep the device away from water , damp or hot environment.
4. Install the device away from strong signal sources such as microwave oven that may cause signal interruption resulted to abnormal operation of the device.

5. Obstruction by concrete wall or metallic materials may reduce the effective operation range of the device and should be avoided.
6. Do NOT attempt to disassemble, repair or modify the device.

FAQ

What should I do if I can't configure the switch module?

a. Please check whether device is powered on. b. Make sure the Zigbee Gateway is available. c. Whether it's in good internet conditions. d. Make sure the password entered in App is correct. e. Make sure the wiring is correct.

What device can be connected to this Zigbee switch module?

Most of your household electrical appliances, such as lamps, laundry machine, coffee maker, etc.

What happens if the WIFI goes off?

You can still control the device connected the witchmodule with your traditional switch and once WIFI is active again the device connected to module will connect automatically to your WIFI network.

What should I do if I change the WIFI network or change the password?

You have to re-connect our Zigbee switch module to the new Wi-Fi network accordingly as per the App User

How do I reset the device?

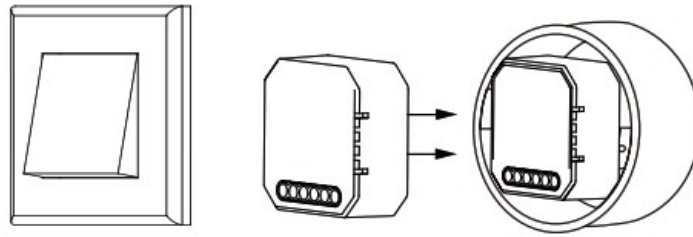
1. Power on/off device for 5 times until the indicator light flash. 2. Switch on/off the traditional switch for 5 times until the indicator light flash. 3. Press the reset key for about 10 seconds until the indicator light flash.

Wiring Instructions and Diagrams

>

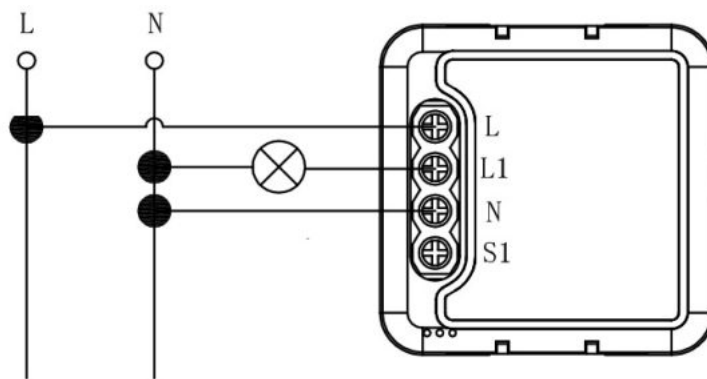
- Turn off the power supply before carrying out any electrical installation work.

- Connect wires according to the wiring diagram.
 - >Insert the module into the junction box.
 - Turn on the power supply and follow switch module configuration instructions.
- l>



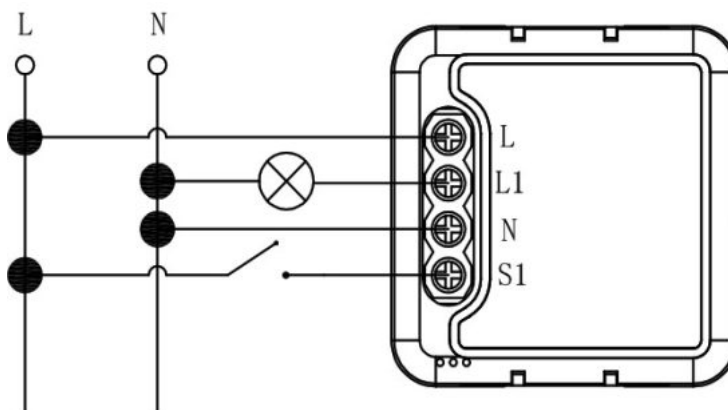
Without Switch

class="57be77cde1a6ddba353152d58844f9cf" data-index="7" style="float: none; margin:10px 0 10px 0; text-align:center;">>

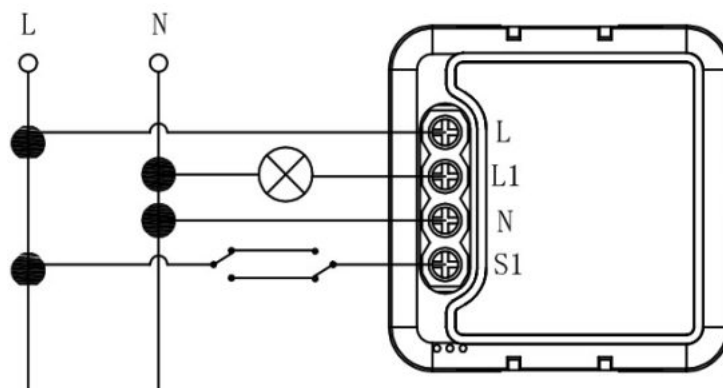


1CH Zigbee Switch Module

Single Control

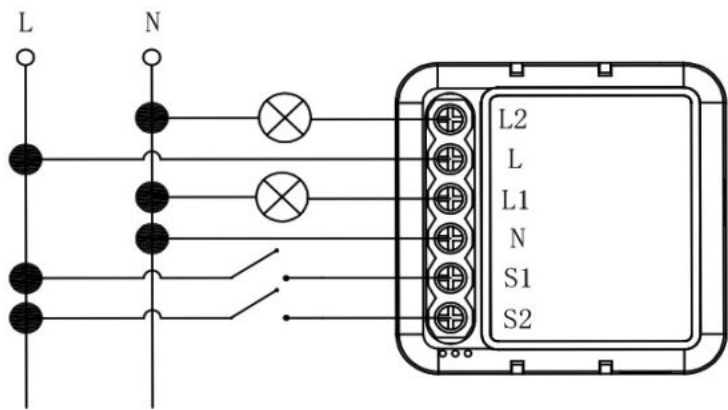


Double Switch

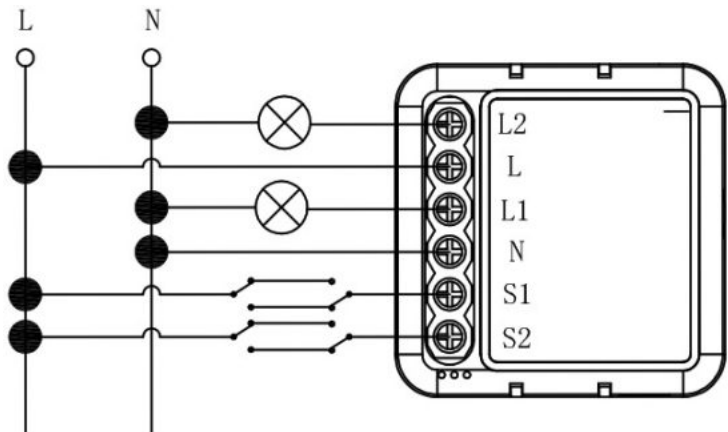


2CH Zigbee Switch Module

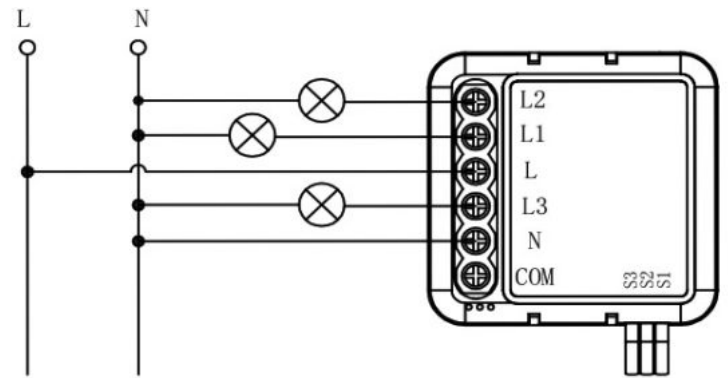
Without Switch



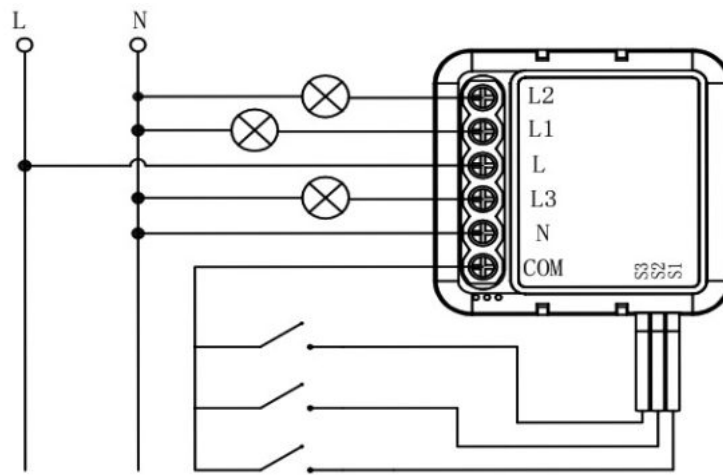
Single Control



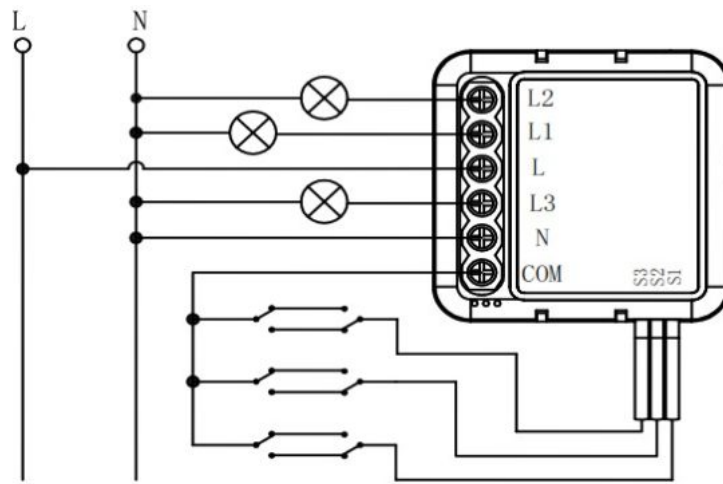
Double Switch



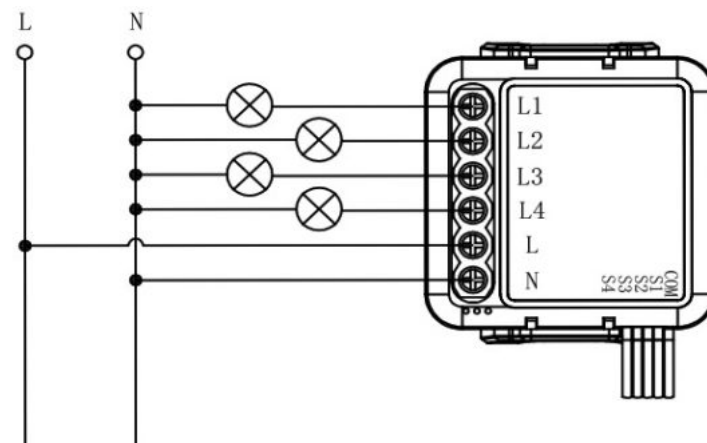
3CH Zigbee Switch Module
Without Switch



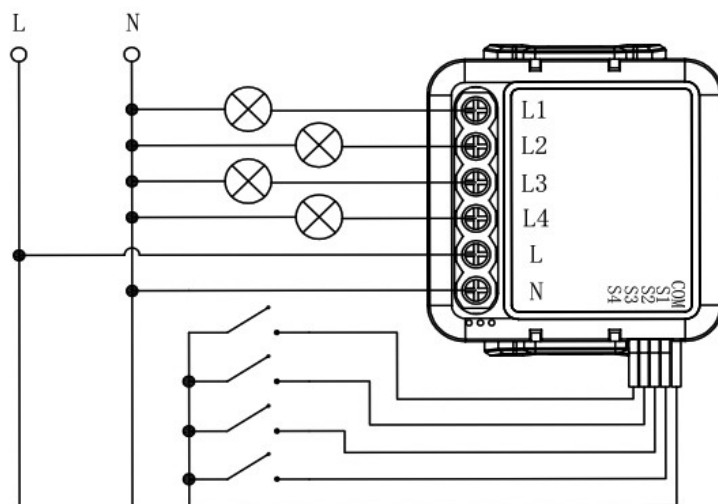
Single Control



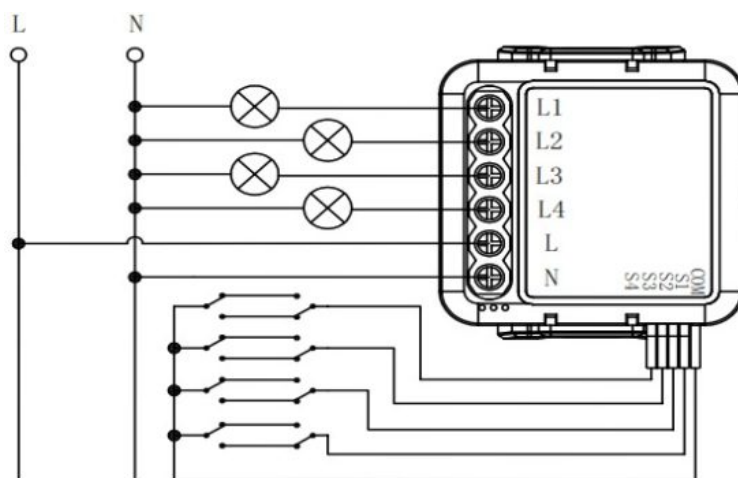
Double Switch



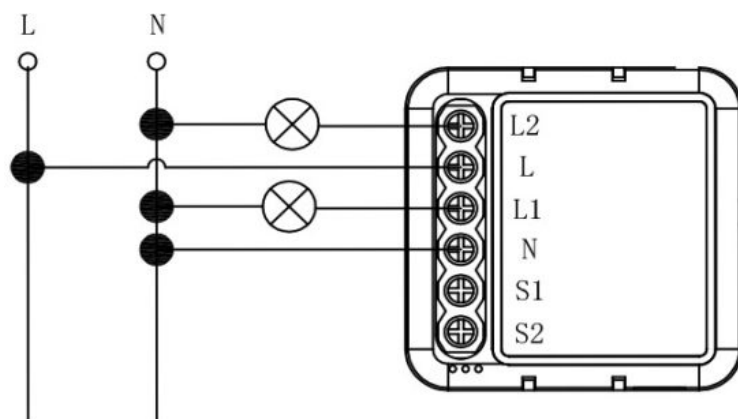
**4CH Zigbee Switch Module
Without Switch**



Single Control



Double Switch



1. IOS APP / Android APP

Scan the QR code to download Tuya Smart App, or you can also search keyword "Tuya Smart" at App Store or Googleplay to download App.

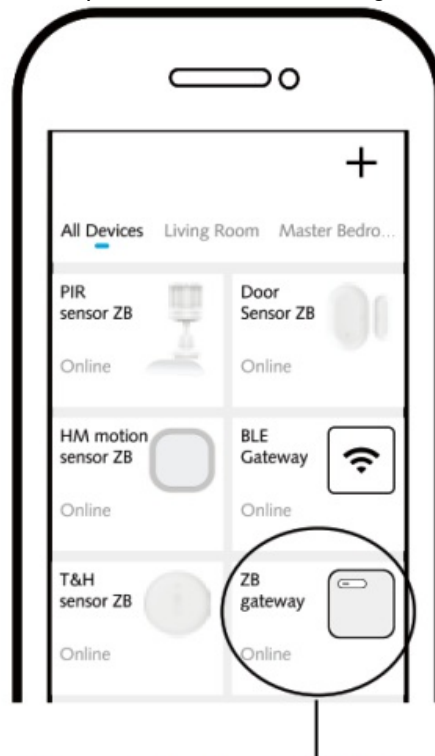
APP USER MANUAL



<http://smart.tuya.com/download>

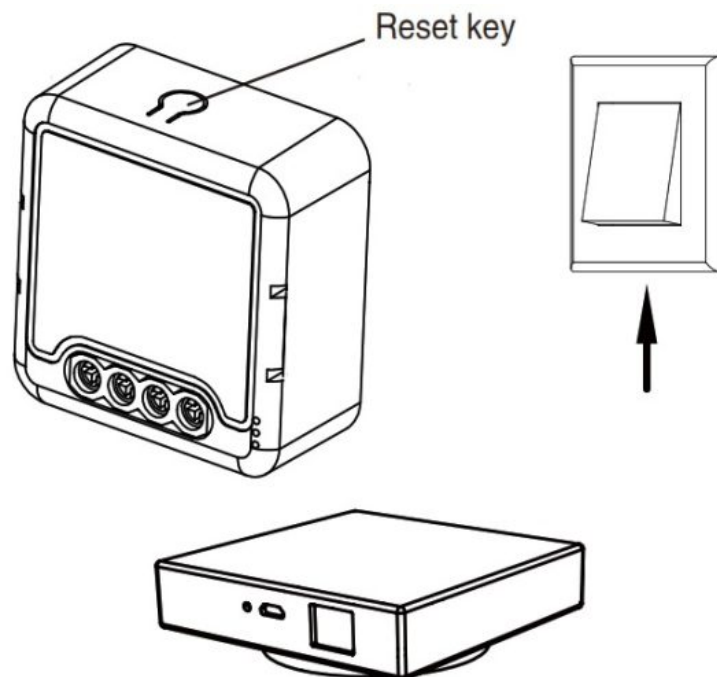
Log in or register your account with your mobile number or e-mail address. Type in the verification code sent to your mobile or mail box, then set your login password. Click “Create Family” to enter into the APP.

Before making the reset operation, pls make sure the Zigbee Gateway is added and installed to the WIFI network. Ensure that the product is within the range of Zigbee Gateway Network.



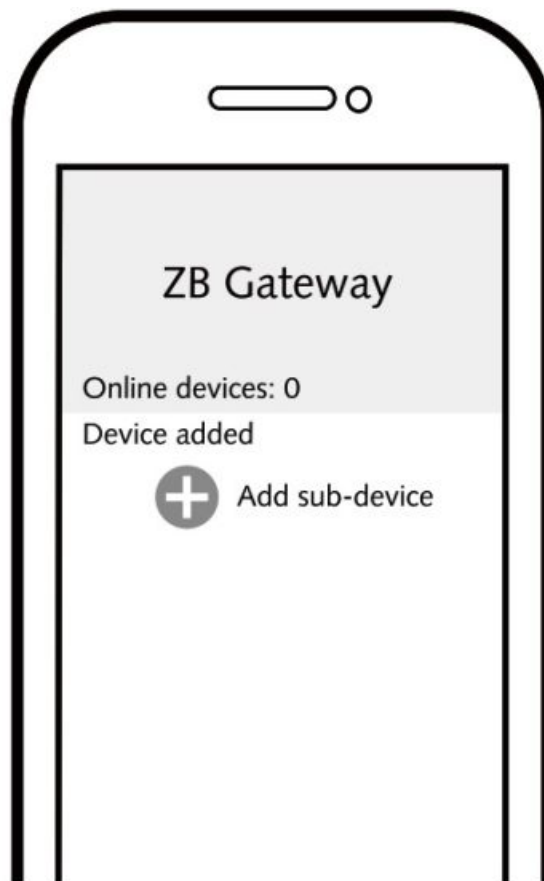
Open the control panel of the ZigBee gateway on the App

2. After the wiring of switch module is done, press the reset key for about 10 seconds or turn on/off the traditional switch for 5 times until the indicator light inside the module is flashing quickly for pairing.



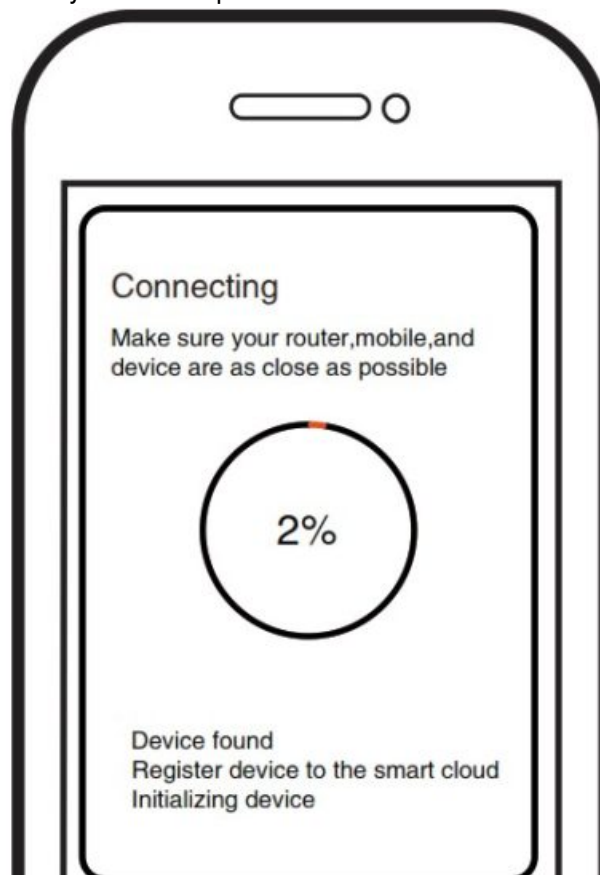
Zigbee Gateway

3. Click “+” (Add sub-device) to select the suitable product gateway and follow the on-screen instruction for paring.



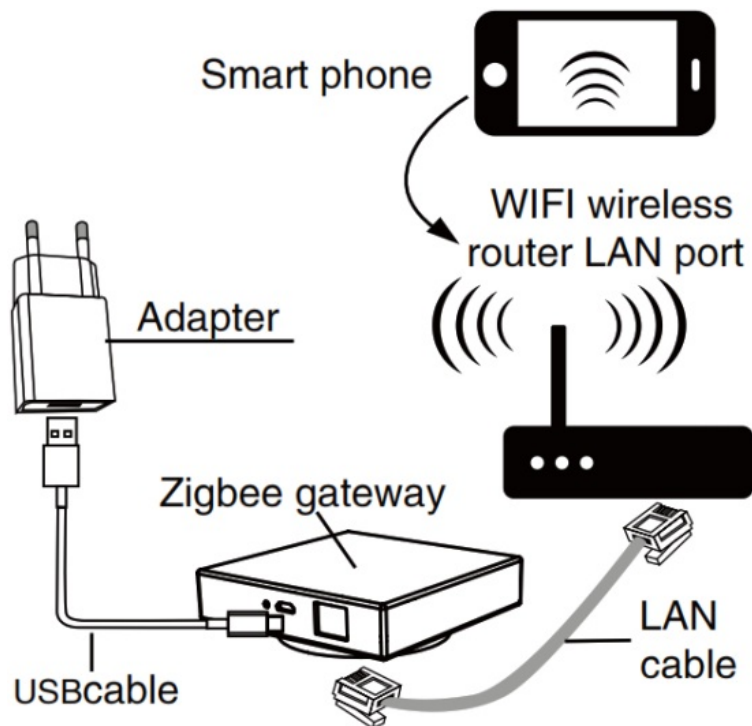
The connecting will take about 10-120 seconds to complete depending on your network condition.

Finally, you can control the device via your mobile phone.



SYSTEM REQUIREMENTS

WIFI® Router
ZigBee gateway
iPhone, iPad (iOS 7.0 or higher)
Android 4.0 or higher



v class="57be77cde1a6ddba353152d58844f9cf" data-index="4" style="float: none; margin:10px 0 10px 0; text-align:center;">



Documents / Resources

	<p>Zigbee 1Ch Universal Smart Switch [pdf] Instruction Manual 1Ch Universal Smart Switch, Universal Smart Switch, Smart Switch, Switch</p>
--	--

References

- [User Manual](#)

[Manuals+](#), [Privacy Policy](#)

This website is an independent publication and is neither affiliated with nor endorsed by any of the trademark owners. The "Bluetooth®" word mark and logos are registered trademarks owned by Bluetooth SIG, Inc. The "Wi-Fi®" word mark and logos are registered trademarks owned by the Wi-Fi Alliance. Any use of these marks on this website does not imply any affiliation with or endorsement.