

ZHONGXIN
Eseecloud App For
Security Camera



Zhongxin Eseecloud App For Security Camera User Manual

[Home](#) » [Zhongxin](#) » Zhongxin Eseecloud App For Security Camera User Manual 

Contents

- 1 Zhongxin Eseecloud App For Security Camera
- 2 Device connection
- 3 Download “Eseecloud” APP
- 4 Scan code binding
- 5 Add Completed
- 6 FCC Caution
- 7 Documents / Resources
 - 7.1 References

ZHONGXIN

Zhongxin Eseecloud App For Security Camera



Device connection

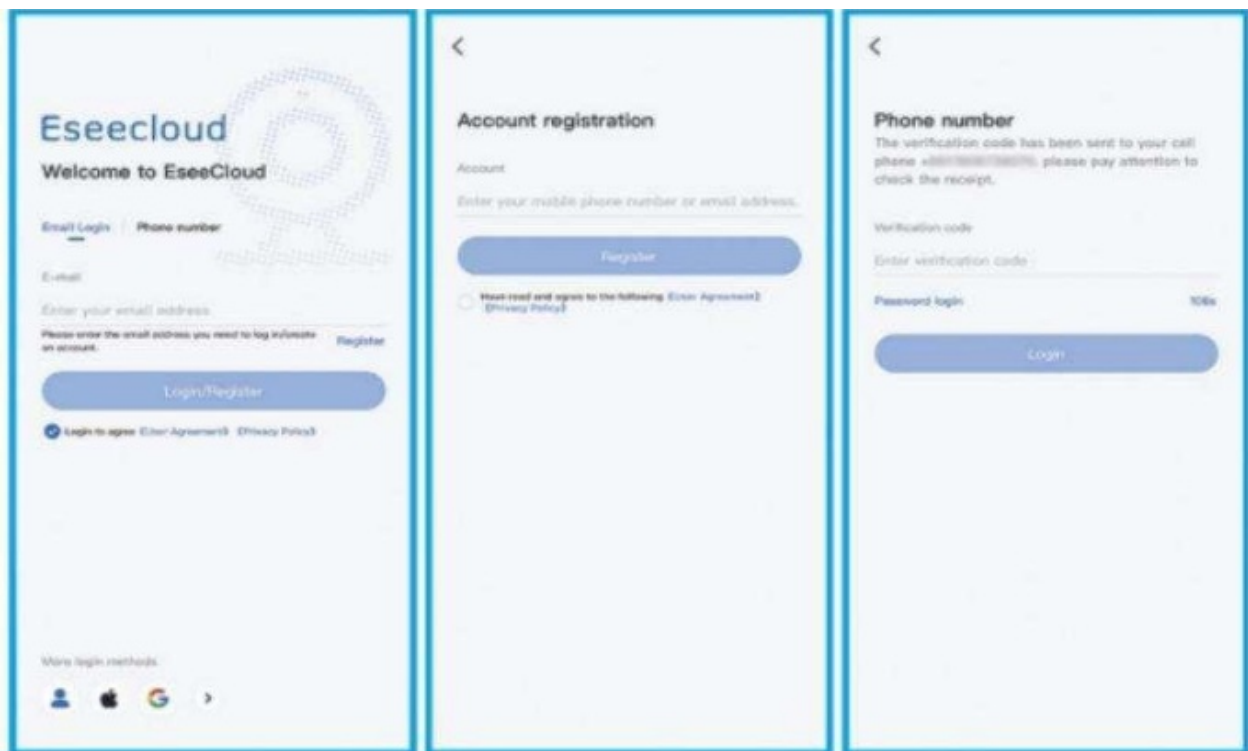
Download the APP

Use your phone to scan the QR code below to download the application, while users can use the APP Store/Google Play to Search for the Eseecloud APP to download.



Download “Eseecloud” APP

SIGNUP/LOGIN



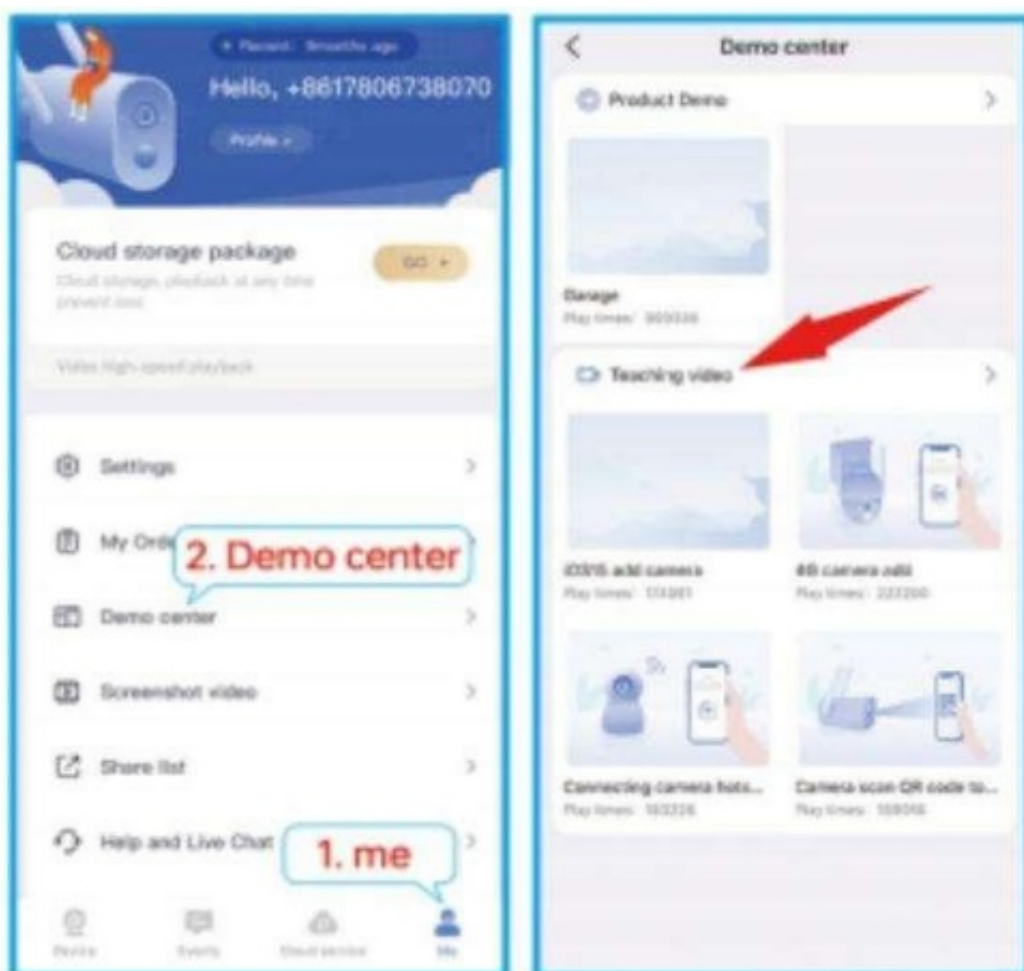
(1) Please register an APP account and log in.

Step 1: New Users need to sign up for an account and select their country.

Step 2: Click “Sign up” then Enter your email, user name, and password Complete the verification and Sign in to your account. (2)If you already have an Eseecloud account, log in directly.

Connection Operation Video

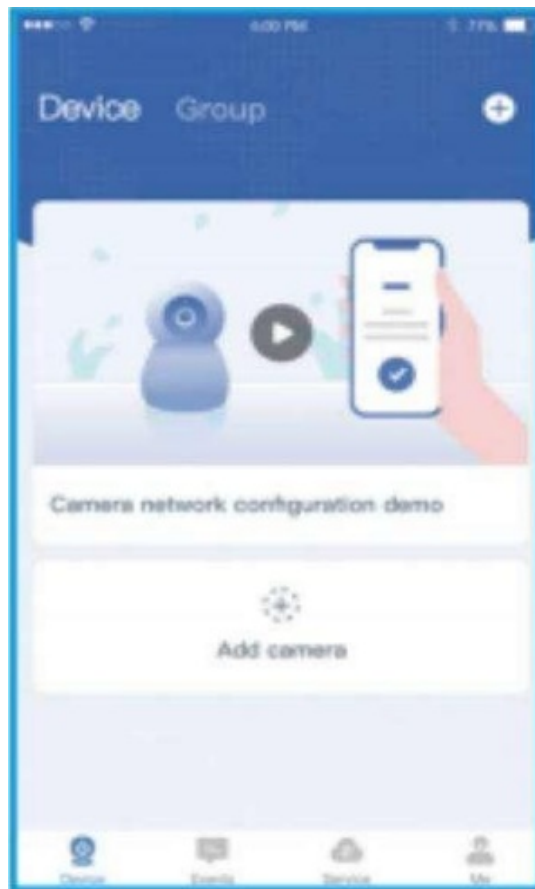
On the APP home page, you can learn by watching the Security Camera connection operation video.



ADD DEVICE

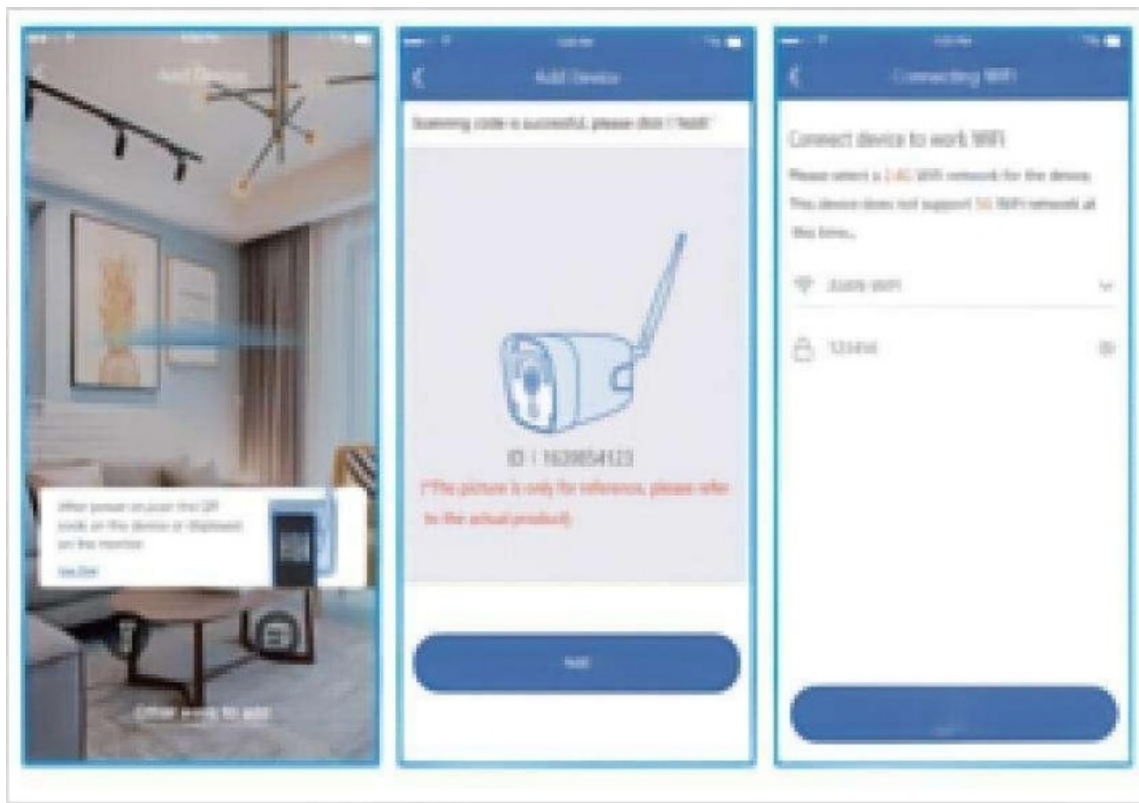
Step 1: Power on the camera until you hear an APP connection prompt (If you don't hear the APP connection prompt, please press the " RESET on the device.)

Step 2: Click "+" on the App right corner under the Home page. There will be multiple connection ways for you to add the device.



Scan code binding

Follow the below tips to connect to the WiFi



1. Use the phone camera to scan the QR code on the camera body
2. Input the 2.4G or 5G WiFi name and password Some models do not support 5G.
3. QR code scanning success, click
4. Waiting 1-2 Minutes Connect to the WiFi.

Scan code binding

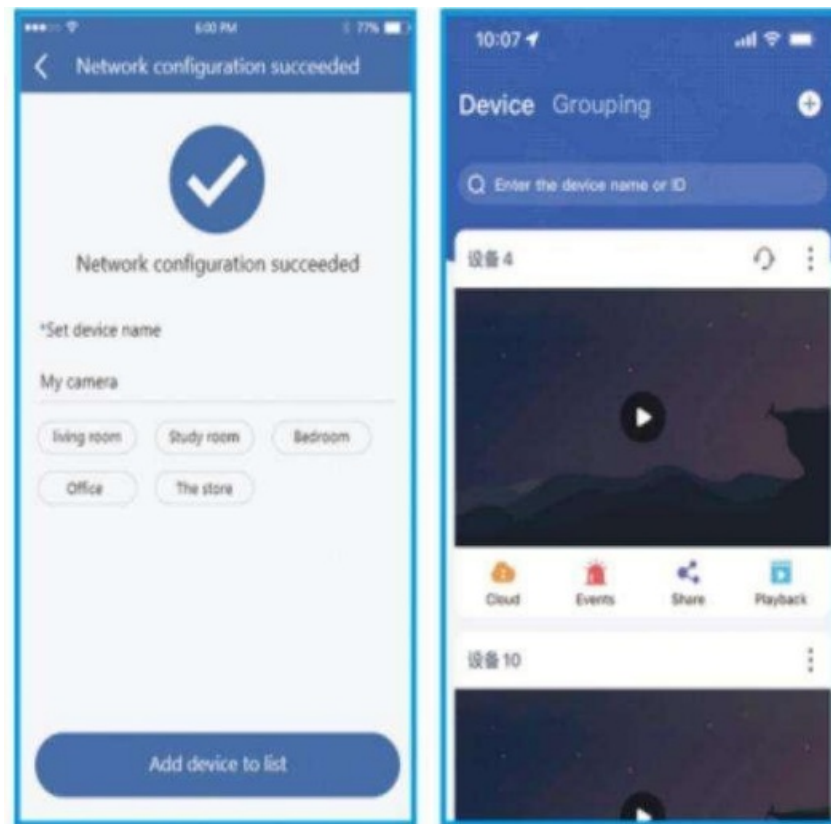


1. The QR code displayed by the APP is aligned with the camera lens, keep it 15-30 centimeters and wait for the

camera to scan it.

2. After the camera scans the QR code successfully and finishes configuring the network, it automatically jumps to the binding interface.

Add Completed



1. At the Installation Environment Test screen, select “Skip”
2. Add Camera Complete.

FCC Caution

This device complies with part 15 of the FCC Rules. Operation is subject to the following two conditions: (1) this device may not cause harmful interference, and (2) this device must accept any interference received, including interference that may cause undesired operation. Any changes or modifications not expressly approved by the party responsible for compliance could void the user's authority to operate the equipment.

NOTE: This equipment has been tested and found to comply with the limits for a Class B digital device, under Part 15 of the FCC Rules. These limits are designed to provide reasonable protection against harmful interference in a residential installation. This equipment generates, uses, and can radiate radio frequency energy and, if not installed and used by the instructions, may cause harmful interference to radio communications. However, there is no guarantee that interference will not occur in a particular installation. Suppose this equipment does cause harmful interference to radio or television reception, which can be determined by turning the equipment off and on. In that case, the user is encouraged to try to correct the interference by one or more of the following measures:

- Reorient or relocate the receiving antenna.
- Increase the separation between the equipment and the receiver.
- Connect the equipment to an outlet on a circuit different from that to which the receiver is connected.
- Consult the dealer or an experienced radio/TV technician for help.

To maintain compliance with FCC’s RF Exposure guidelines, This equipment should be installed and operated with a minimum distance between 20cm of the radiator and your body: Use only the supplied antenna.

Documents / Resources

	Zhongxin Eseecloud App For Security Camera [pdf] User Manual Eseecloud App For Security Camera, App For Security Camera, Security Camera, Camera
---	---

References

- [User Manual](#)

[Manuals+](#), [Privacy Policy](#)

This website is an independent publication and is neither affiliated with nor endorsed by any of the trademark owners. The "Bluetooth®" word mark and logos are registered trademarks owned by Bluetooth SIG, Inc. The "Wi-Fi®" word mark and logos are registered trademarks owned by the Wi-Fi Alliance. Any use of these marks on this website does not imply any affiliation with or endorsement.