



ZHIYUN SMOOTH-Q3 Smartphone Gimbal Stabilizer User Guide

[Home](#) » [ZHIYUN](#) » ZHIYUN SMOOTH-Q3 Smartphone Gimbal Stabilizer User Guide 

Contents

- [1 ZHIYUN SMOOTH-Q3 Smartphone Gimbal Stabilizer](#)
- [2 Getting Started](#)
- [3 Charging](#)
- [4 Installation and Balance Adjustment](#)
- [5 Button Description](#)
- [6 Connect with “ZV Cami”APP](#)
- [7 Disclaimer and Warning](#)
- [8 FCC STATEMENT](#)
- [9 Documents / Resources](#)
- [10 Related Posts](#)



ZHIYUN SMOOTH-Q3 Smartphone Gimbal Stabilizer



Getting Started

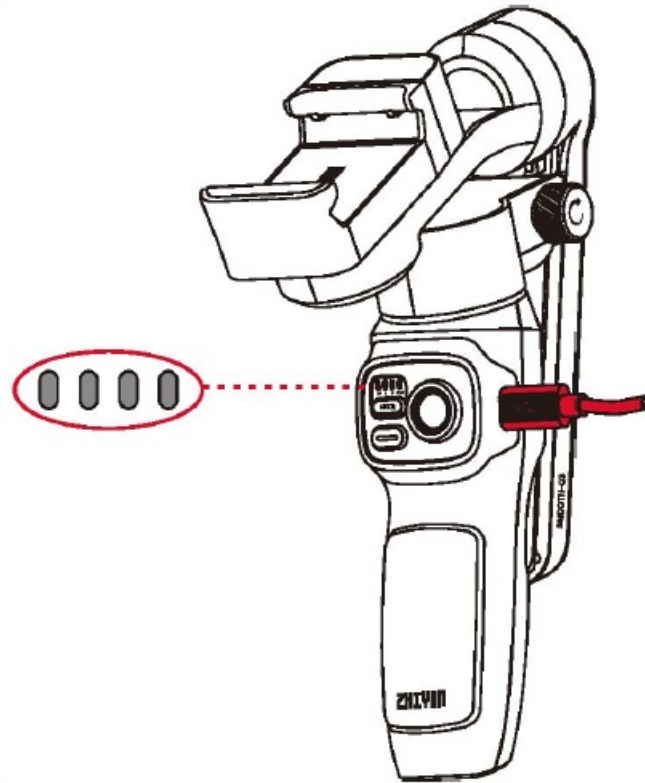
Read The Full-Version User Guide

To protect the environment and reduce the consumption of resources, the paper user guide of this product will not be in full version. For the full version, please choose one of the methods below:

1. Use the phone browser to scan the QR code on the right.
2. Open ZY Cami app, go to the home page of the corresponding product and tap the icon on the upper right corner.
3. Download at the official ZHIYUN website www.zhiyun-tech.com.

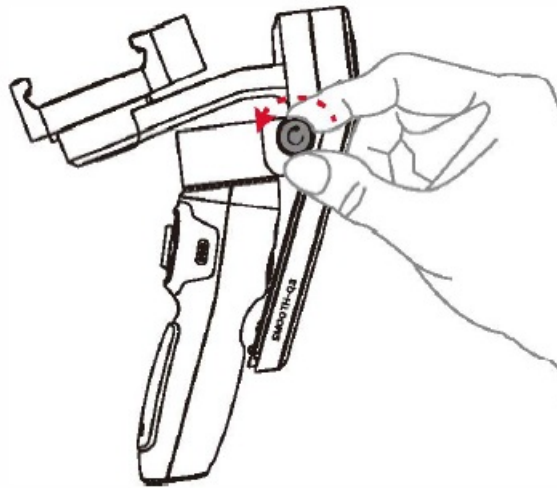
Charging

Use provided Type-C cable to connect the power adapter (not included in the package, 5V2A rated power adapter recommended) to the charging port on the stabilizer. The four indicator lights on the stabilizer stay on when charging is completed.

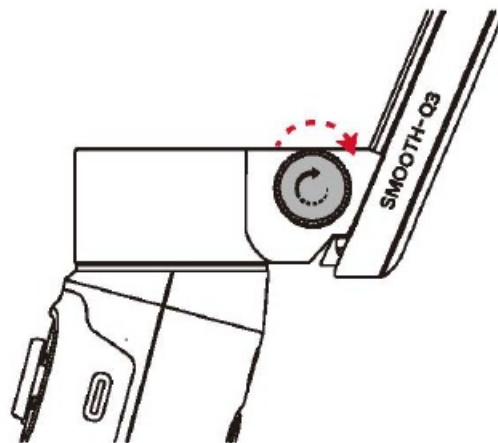
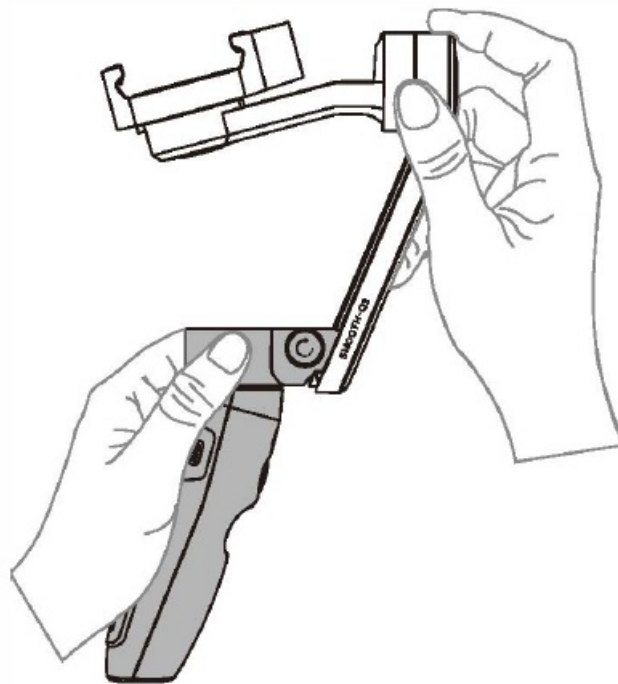
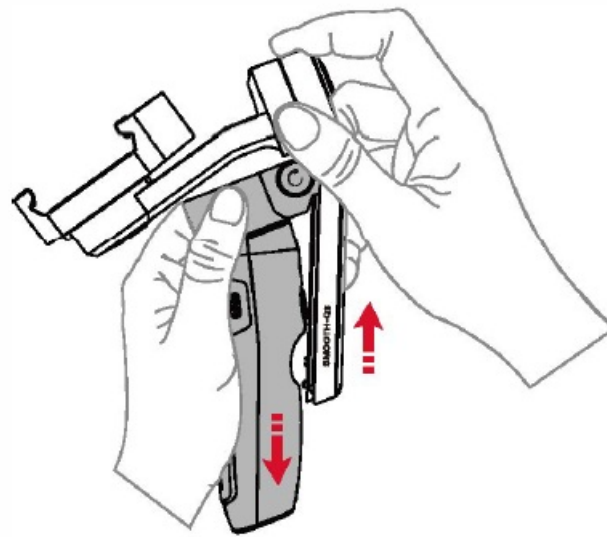


Installation and Balance Adjustment

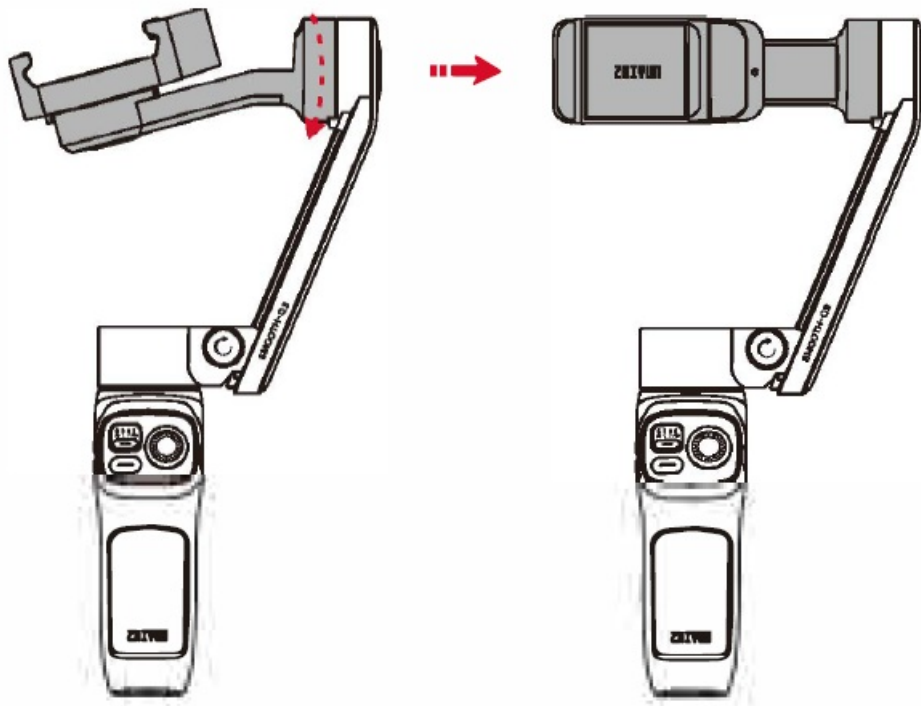
1. Loosen the lock screw of the vertical arm counterclockwise.



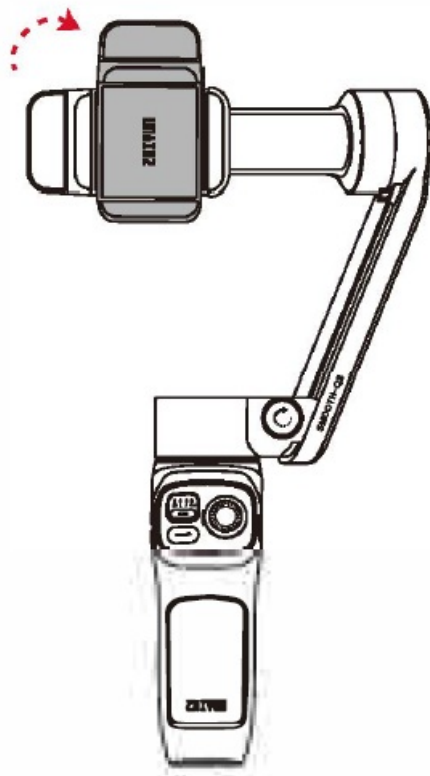
2. To ensure good contact with the contact points, pull the pan axis motor to the bottom of the vertical arm while holding the roll and pan axes motors until you hear a 'click' sound. Tighten the lock screw of the vertical arm clockwise.



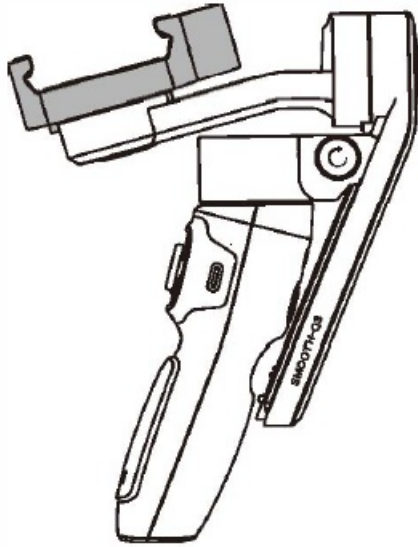
3. Rotate the tilt axis arm along the outer edge shown in the image.



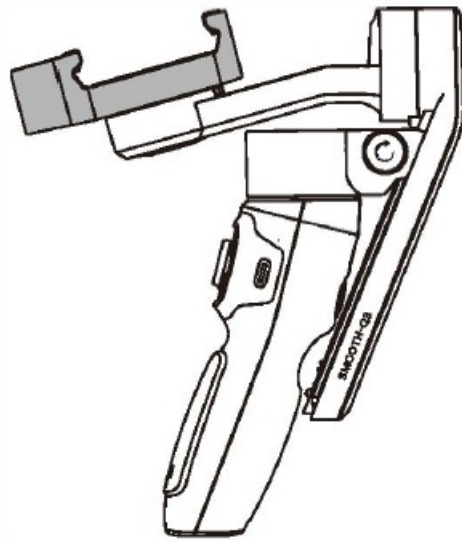
4. Rotate the phone clamp 90° clockwise to the position shown in the image. (The direction shown in the image is for when the phone clamp is tightened)



Q When putting the stabilizer back into the box, please rotate the phone clamp to the storage state as shown in the image.

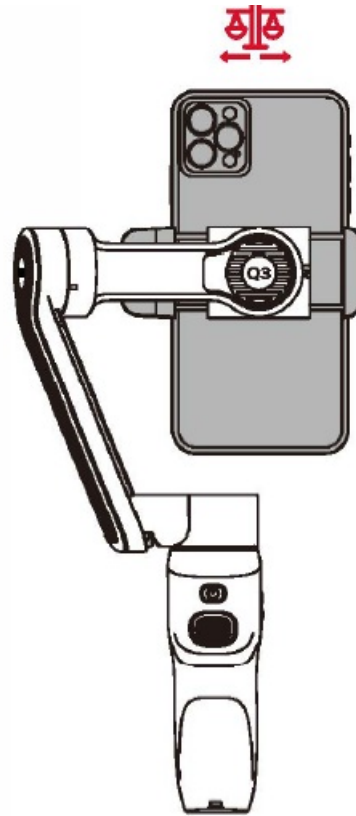
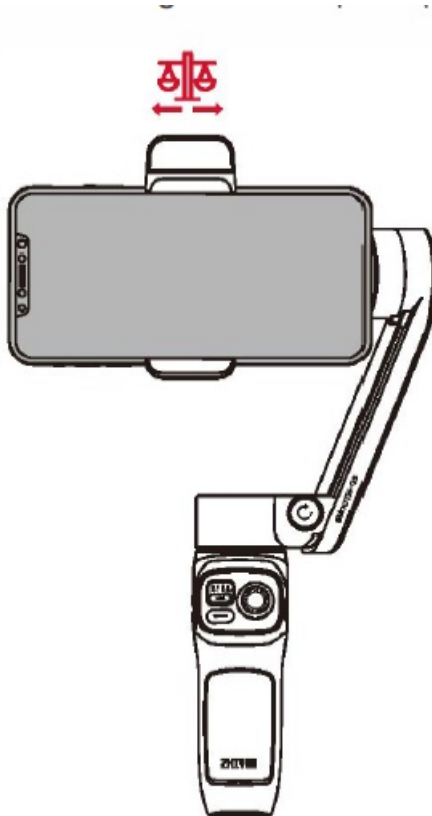


Storage state

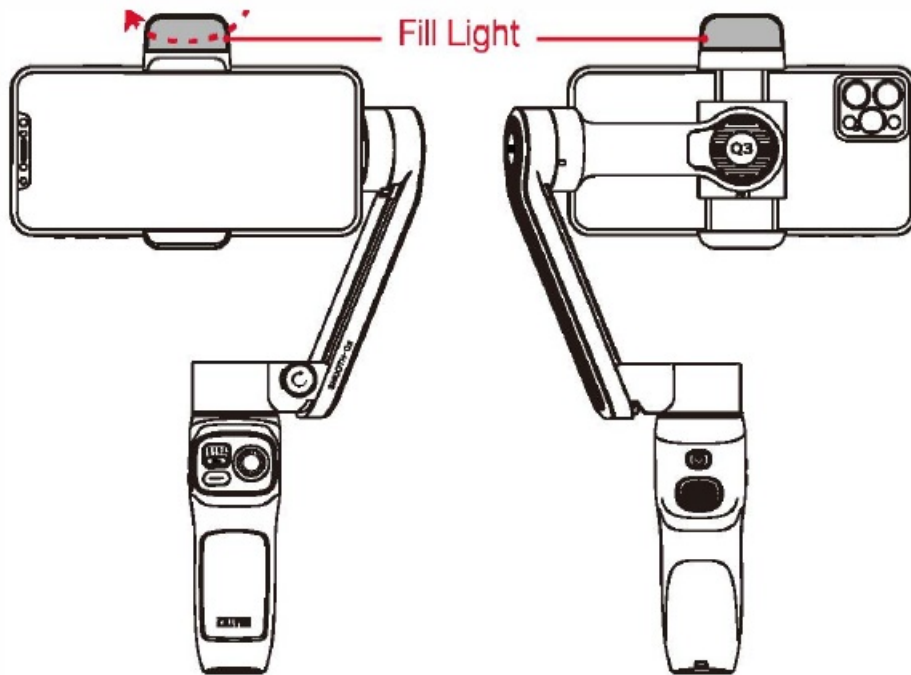


Phone clamp tightened

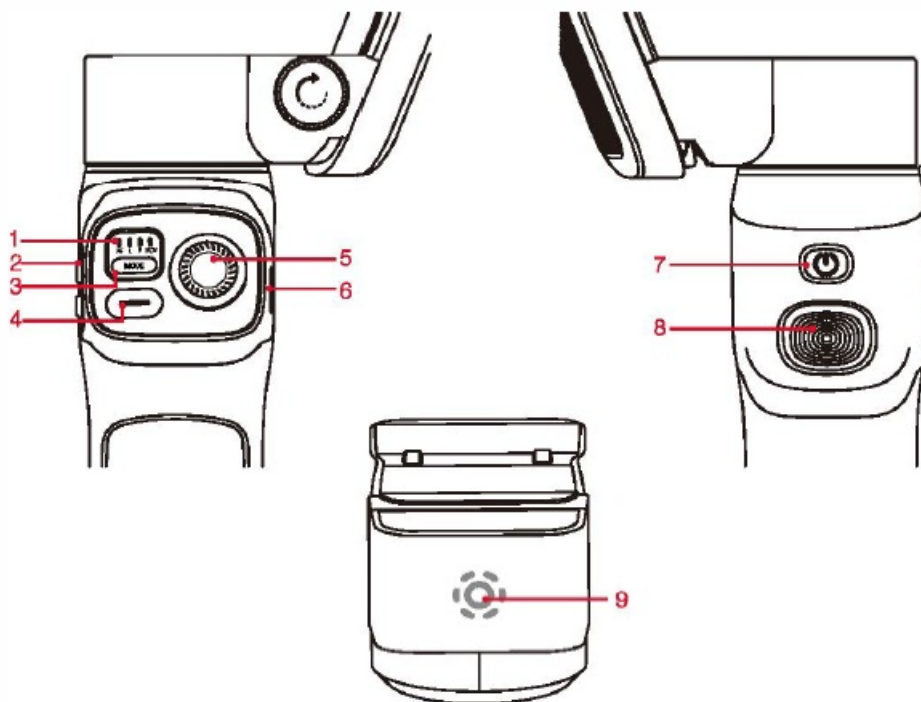
5. When mounting the phone, make sure the phone camera is on the left side of the clamp and adjust the balance for shooting in landscape or portrait mode.



6. Rotate the fill light when needed. The maximum rotate angle is 180.



Button Description



1. Indicator Lights

2. Zoom Rocker

3. MODE Button

- Single press to switch stabilizer modes. Double press to go back to the previous mode. Press and hold to enter/exit standby mode.

4. PhotoNideo

- Single press to take photos/film videos. Double press to switch photo/video mode. Press three times to switch front/rear camera. Press and hold to take multiple photos.

5. Joystick

6. Type-C Charging/Firmware Update Port

7. Power Button

- Single press to check the battery level. Press and hold for 3 seconds to power on/off. Press 8 times to reset Bluetooth.

8. Trigger Button

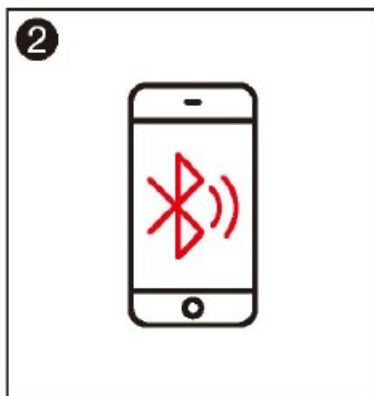
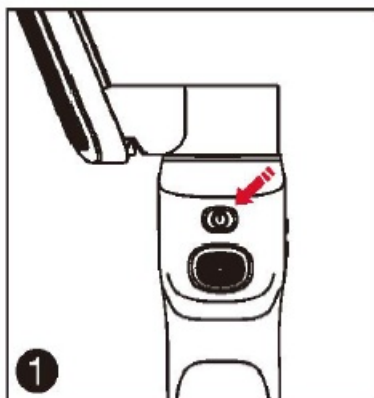
- Single press to enable Smart Following. Double press for reposition. Triple press to switch between Landscape Mode and Portrait Mode. Press and hold to enter PhoneGo Mode.

9. Fill Light Switch/Brightness Switch

- When the device is powered on, single press to adjust brightness in three levels. Press and hold for 1.5s to turn on/off the fill light.

Connect with “ZY Cami”APP

1. . Power on SMOOTH-03 and turn on Bluetooth on the smartphone.
2. Launch the “ZY Cami” app. Tap the icon in the upper left corner in the home screen to open the device list and select the SMOOTH-Q3 device you wish to connect (the SMOOTH-Q3 Bluetooth name can be checked on the side of the tilt axis USER ID: XXXX).
3. Activation on the ZY Cami app is required if the SMOOTH-03 is being used for the first time, otherwise the motor will not work. You need to register and log in the ZHIYUN account for activation. Internet connection is required.
4. After the activation succeeds, the motor will work normally and the shooting interface will pop up automatically on the app.
 1. Users can make better use of the various functions of SMOOTH-Q3 with the dedicated app ‘ZY Cami’.
 2. ‘ZY Cami is subject to update. Please always refer to the latest version.



4

5

Disclaimer and Warning

Thank you for purchasing SMOOTH-Q3. The information contains herein affects your safety, legitimate rights and obligation. Please read this instruction carefully to ensure proper configuration before use. Failure to read and follow this instruction and warnings herein may result in serious injury to you or bystanders, or damage to your device or property. Guilin Zhishen Information Technology Co., Ltd (hereinafter referred to as 'ZHIYUN') reserves all rights for final explanation on this instruction and other documents related to SMOOTH-Q3. The information is subject to update without notice. Please visit www.zhiyun-tech.com to obtain the latest product information. By using this product, you hereby signify that you have read this document carefully and that you understand and

agree to abide by the terms and conditions herein. You agree that you are solely responsible for your own conduct while using this product, and for any consequences thereof. You agree to use this product only for purposes that are proper and in accordance with all terms, precautions, practices, policies and guidelines ZHIYUN has made and may make available.

ZHIYUN accepts no liability for damage, injury or any legal responsibility incurred directly or indirectly from the use of this product. Users shall observe safe and lawful practices including, but not limited to, those set forth herein. ZHIYUN™ is the trademark of Guilin Zhishen Information Technology Co., Ltd and its affiliates. All product names or trademarks referred to herein are trademarks or registered trademarks of their respective holders.

Reading Tips

Scanning the QR code and operating under a carrier network may cause a traffic fee which will be charged by your carrier. It is recommended to operate under-Fi.

Warnings

Read the ENTIRE User Guide to become familiar with the features of this product before operating. Failure to operate the product correctly can result in damage to the product or personal property and cause serious injury. This is a sophisticated product. It must be operated with caution and common sense and requires some basic mechanical ability. Failure to operate this product in a safe and responsible manner could result in injury or damage to the product or other property. This product is not intended for use by children without direct adult supervision. DO NOT use with incompatible

FCC STATEMENT

This device complies with Part 15 of the FCC Rules. Operation is subject to the following two conditions:

1. This device may not cause harmful interference, and
2. This device must accept any interference received, including interference that may cause undesired operation.

Warning: Changes or modifications not expressly approved by the party responsible for compliance could void the user's authority to operate the equipment.


NOTE: This equipment has been tested and found to comply with the limits for a Class B digital device, pursuant to Part 15 of the FCC Rules. These limits are designed to provide reasonable protection against harmful interference in a residential installation. This equipment generates uses and can radiate radio frequency energy and, if not installed and used in accordance with the instructions, may cause harmful interference to radio communications. However, there is no guarantee that interference will not occur in a particular installation. If this equipment does cause harmful interference to radio or television reception, which can be determined by turning the equipment off and on, the user is encouraged to try to correct the interference by one or more of the following measures:

Reorient or relocate the receiving antenna. Increase the separation between the equipment and receiver. Connect the equipment into an outlet on a circuit different from that to which the receiver is connected. Consult the dealer or an experienced radio/TV technician for help.

RF warning statement:

The device has been evaluated to meet general RF exposure requirement. The device can be used in portable exposure condition without restriction.

Documents / Resources

	ZHIYUN SMOOTH-Q3 Smartphone Gimbal Stabilizer [pdf] User Guide ZYSM113, 2AIHFZYSM113, SMOOTH-Q3 Smartphone Gimbal Stabilizer, Smartphone Gimbal Stabilizer, Gimbal Stabilizer, Stabilizer
---	--

