



# ZHIYUN Smooth-Q3 Compact Folding 3 Axis Stabilizer User Guide

[Home](#) » [ZHIYUN](#) » ZHIYUN Smooth-Q3 Compact Folding 3 Axis Stabilizer User Guide 



## Smooth-Q3 Compact Folding 3-Axis Stabilizer User Guide

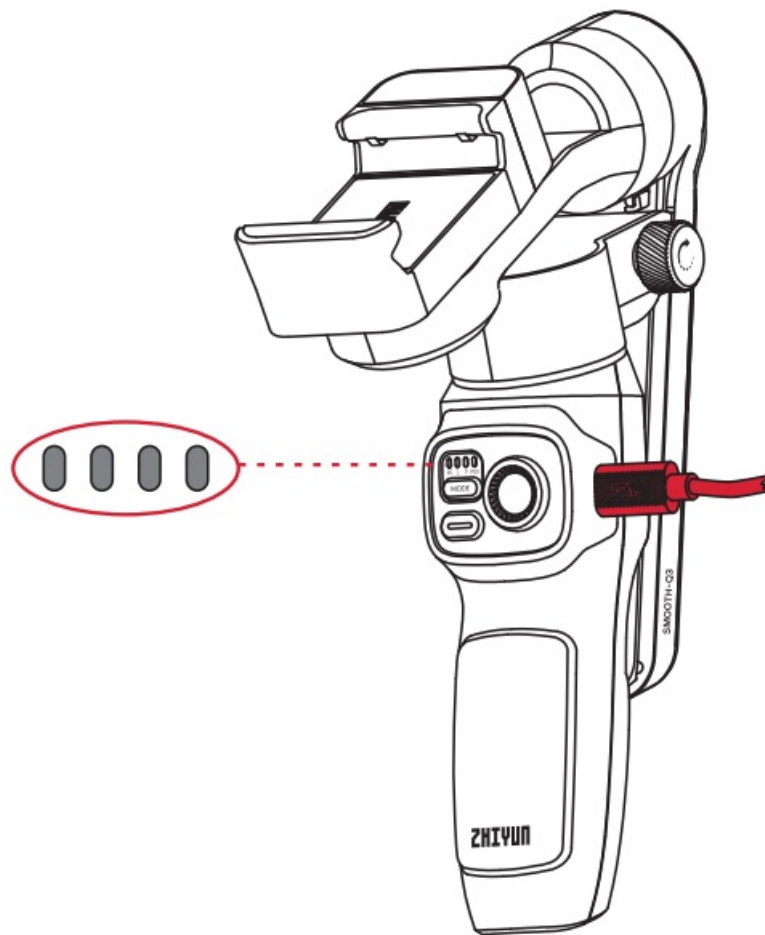
### Contents

- [1 Smooth-Q3 Compact Folding 3-Axis Stabilizer](#)
- [2 Installation and Balance Adjustment](#)
- [3 Button Description](#)
- [4 More Features](#)
- [5 Documents / Resources](#)
- [6 Related Posts](#)

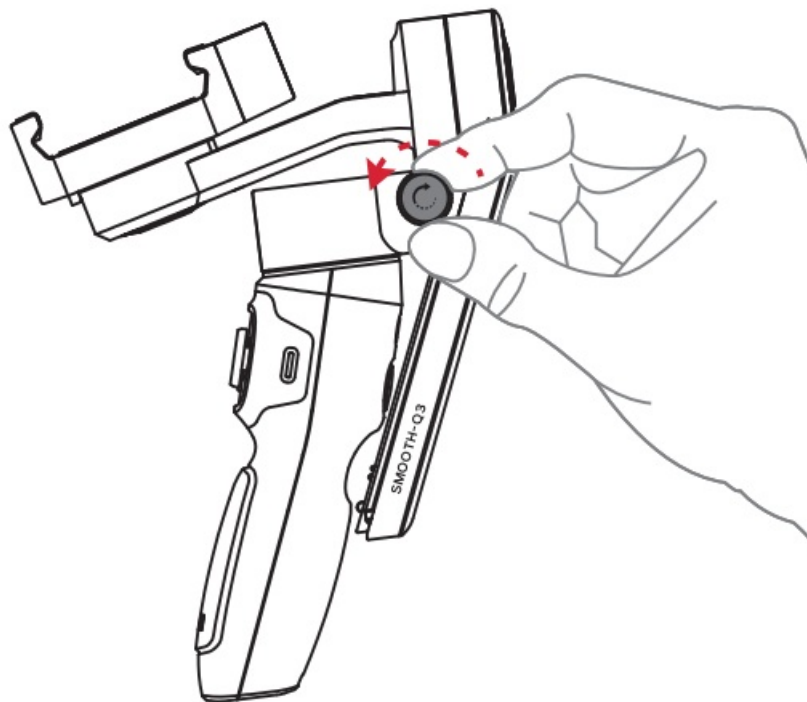
## Smooth-Q3 Compact Folding 3-Axis Stabilizer

### Charging

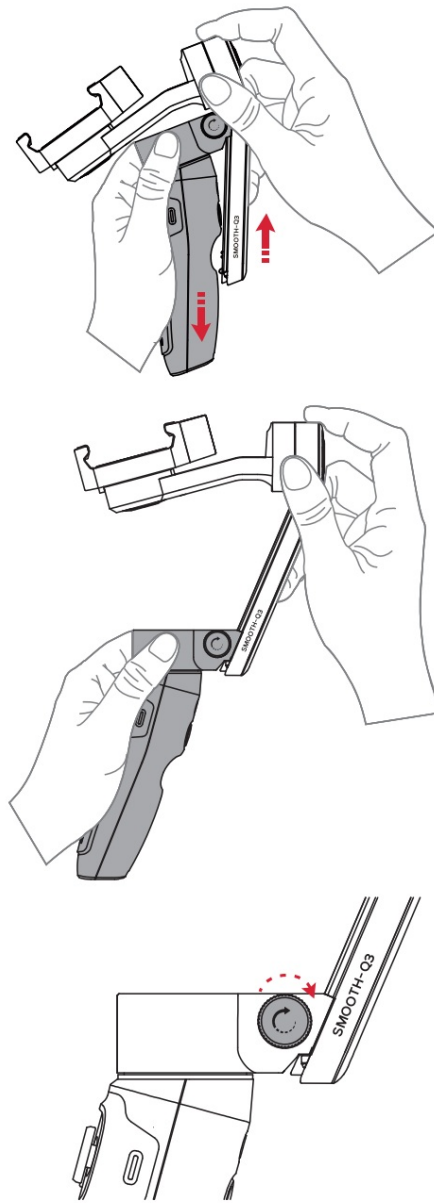
Use provided TypeC cable to connect the power adapter (not included in the package, 5V2A rated power adapter recommended) to the charging port on the stabilizer. The four indicator lights on the stabilizer stay on when charging is completed.



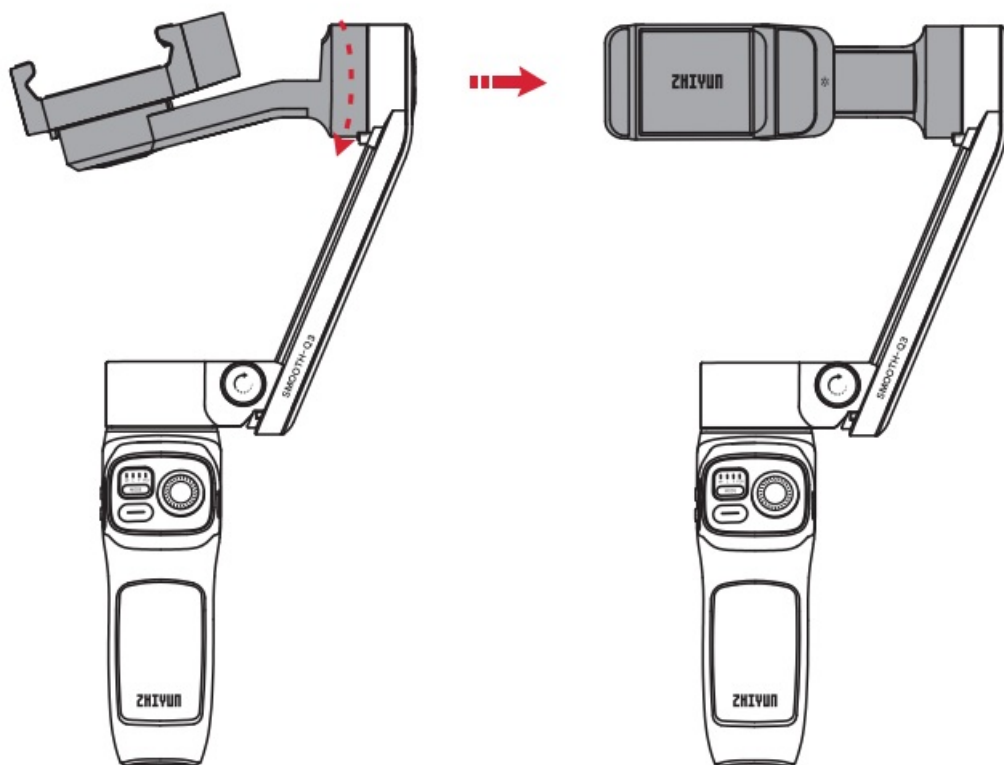
## Installation and Balance Adjustment



1. Loosen the lock screw of the vertical arm counterclockwise.
2. To ensure good contact with the contact points, pull the pan-axis motor to the bottom of the vertical arm while holding the roll and pan axes motors until you hear a “click sound. Tighten the lock screw of the vertical arm clockwise.

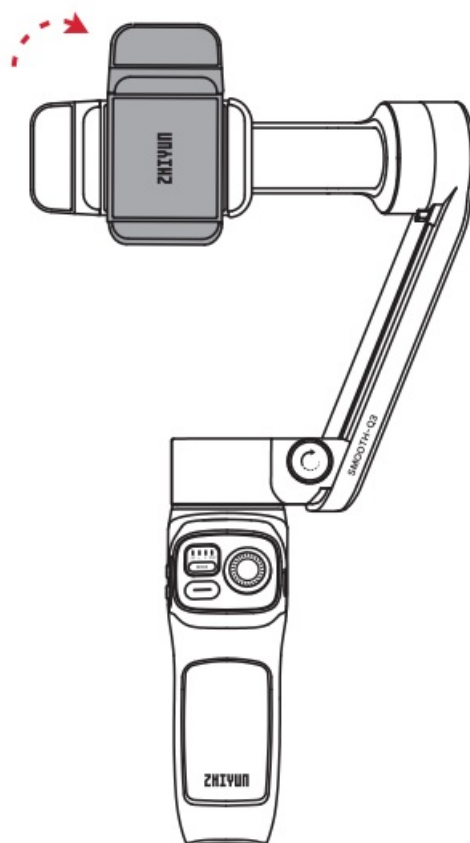


3. Rotate the tilt axis arm along the outer edge shown in the image.

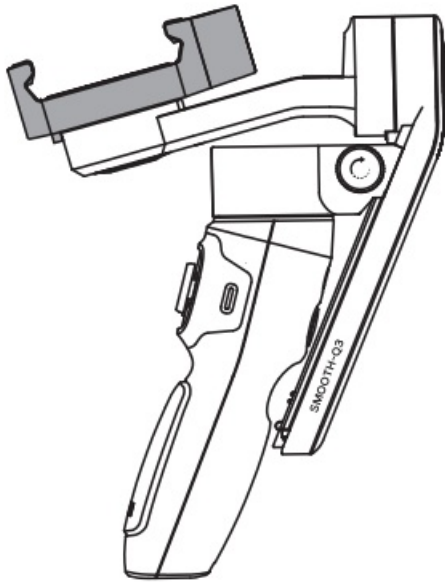


Please rotate in the correct direction shown in the image to prevent the fixing buckle of the tilt axis from damaging.

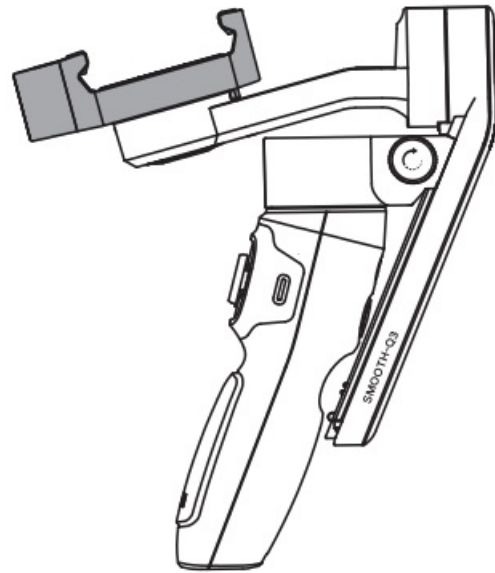
4. Rotate the phone clamp 90° clockwise to the position shown in the image. (The direction shown in the image is for when the phone clamp is tightened)



When putting the stabilizer back into the box, please rotate the phone clamp to the storage state as shown in the image.

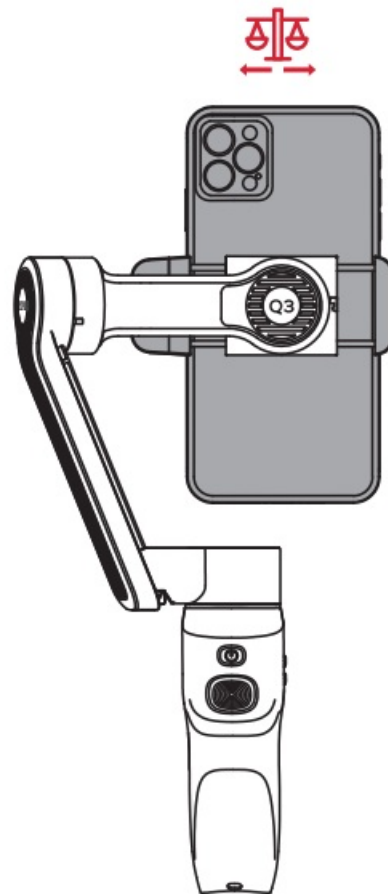
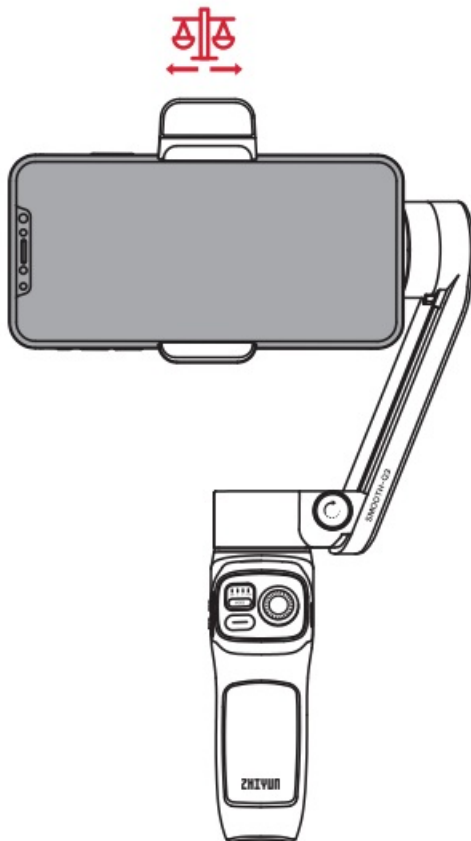


Storage state

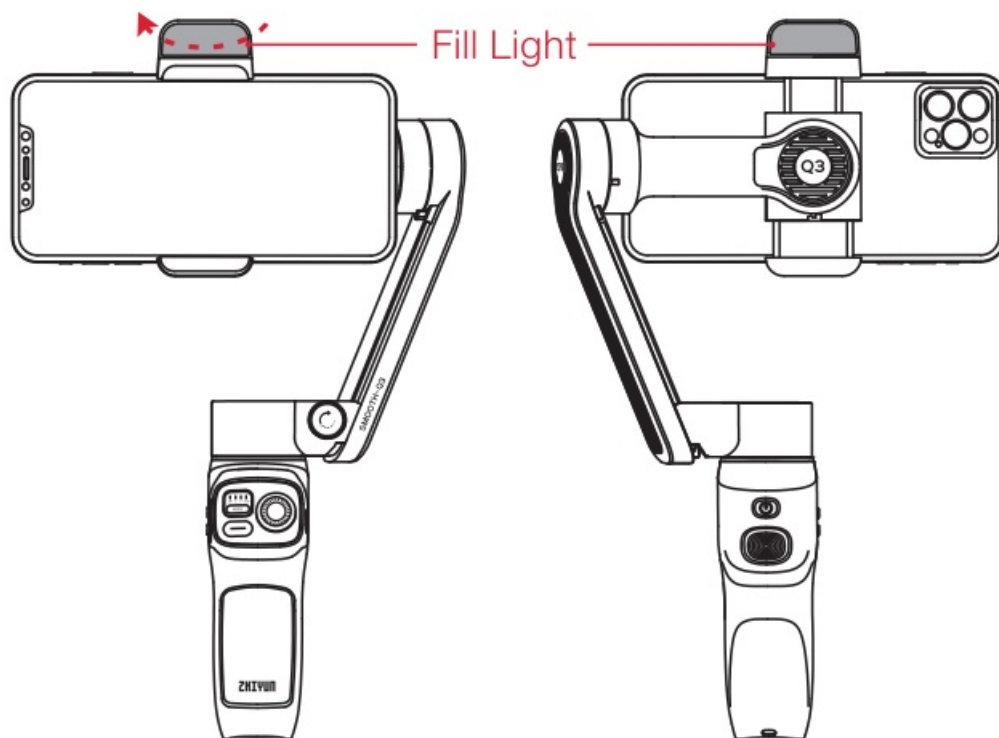


Phone clamp tightened

- When mounting the phone, make sure the phone camera is on the left side of the clamp and adjust the balance for shooting in landscape or portrait mode.

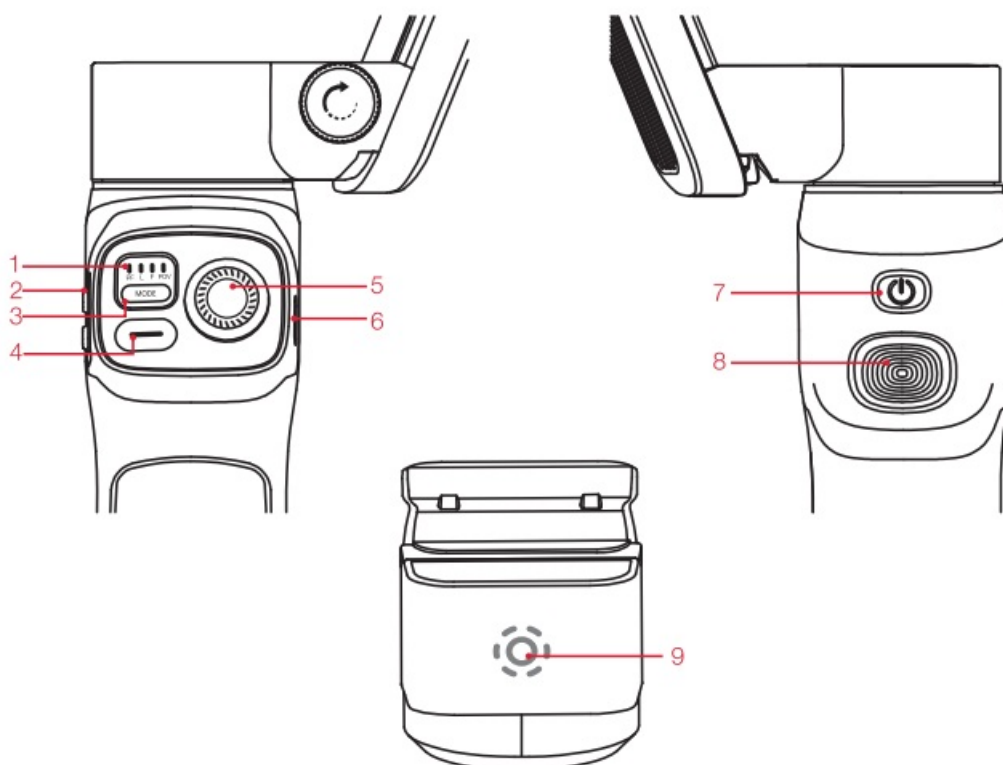


- Rotate the fill light when needed. The maximum rotate angle is 180.



Please rotate in the correct direction

## Button Description



1. Indicator Lights



2. Zoom Rocker



3. MODE Button

- Single press to switch stabilizer modes. Double press to go back to the previous mode. Press and hold to enter/exit standby mode.



4. Photo/Video

- Single press to take photos/film videos. Double press to switch photo/video mode. Press three times to switch the front/rear camera. Press and hold to take multiple photos.



5. Joystick



6. Type-C Charging/Firmware Update Port



7. Power Button

- Single press to check the battery level. Press and hold for 3 seconds to power on/off. Press 8 times to reset Bluetooth.

## 8. Trigger Button

- Single press to enable/disable smart following. Double press to reposition. Triple press to switch landscape/portrait mode. Press and hold to enter PhoneGo mode.




9. Fill Light Switch/Brightness Switch

- When the device is powered on, a single press to adjust brightness in three levels. Press and hold for 1.5s to turn on/off the fill light.


## More Features

<div></div> <div>Full-version user guide</div>	
<a href="http://172.16.1.152/gateway/zbUlkk9xAZmajJFY">http://172.16.1.152/gateway/zbUlkk9xAZmajJFY</a>	<a href="http://172.16.1.152/gateway/zbUlkk9xAZmajJFY">http://172.16.1.152/gateway/zbUlkk9xAZmajJFY</a>
<div></div> <div>ZY Cami APP</div>	
<a href="https://www.zhiyun-tech.com/zycami">https://www.zhiyun-tech.com/zycami</a>	

 **zy** Cami is an app tailor-made for SMOOTH-Q3. When SMOOTH-Q3 is activated through ZY Cami, users can experience advanced features such as the smart following, gesture control, timelapse, dolly zoom, and SMART templates through ZY Cami.

[zhiyun-tech.com](http://zhiyun-tech.com)

**Documents / Resources**

	<p><a href="#">ZHIYUN Smooth-Q3 Compact Folding 3 Axis Stabilizer</a> [pdf] User Guide Smooth-Q3, Compact Folding 3 Axis Stabilizer, Smooth-Q3 Compact Folding 3 Axis Stabilizer, Folding 3 Axis Stabilizer, 3 Axis Stabilizer, Stabilizer</p>
---	--