



ZHIYUN SMOOTH-Q3 3-axis Stabilizer User Guide

[Home](#) » [ZHIYUN](#) » ZHIYUN SMOOTH-Q3 3-axis Stabilizer User Guide 



SMOOTH Q3 3 axis Stabilizer User Guide

Contents

- [1 Getting Started](#)
- [2 Charging](#)
- [3 Installation and Balance Adjustment](#)
- [4 Button Description](#)
- [5 Documents / Resources](#)
 - [5.1 References](#)
- [6 Related Posts](#)

Getting Started



<https://www.zhiyun-tech.com/zycami>



Download “ZY Cami”

Before using SMOOTH-Q3, please scan the QR code to download “ZY Cami” and activate the product. See P5 for activation steps. (Android 7.0 above and iOS 10.0 above required)

Read The Full-Version User Guide



<http://172.16.1.152/gateway/VRzhM8BT08zxFZvQ>

To protect the environment and reduce the consumption of resources, the paper user guide of this product will not be in full version. For the full version, please choose one of the methods below:

1. Use the phone browser to scan the QR code on the right.
2. Open ZY Cami app, go to the home page of the corresponding product and tap the icon on the upper right corner.
3. Download at the official ZHIYUN website www.zhiyun-tech.com.

Scan the QR code to watch SMOOTH-Q3 video tutorials



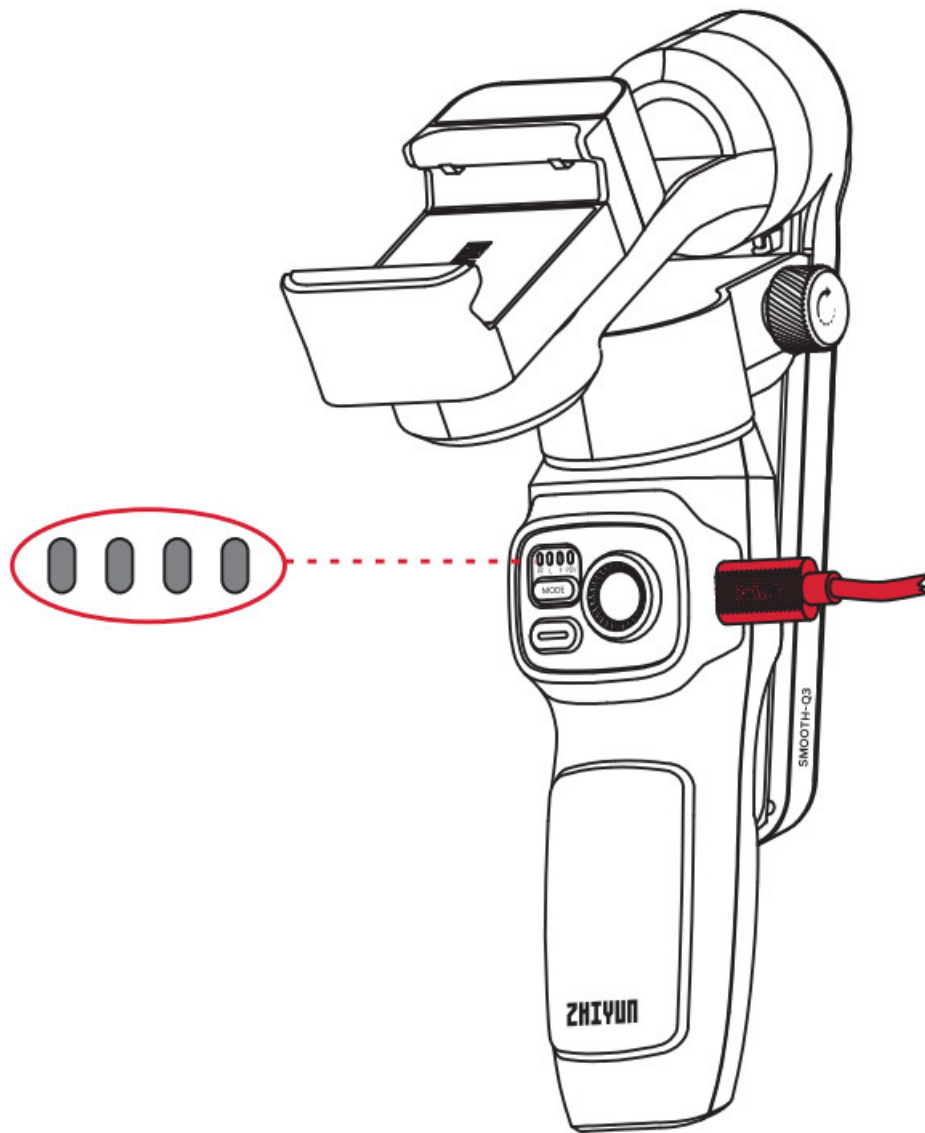
<http://172.16.1.152/gateway/zbUlkk9xAZmajJFY>



Follow the steps below to get to know the basic functions of SMOOTH-Q3. Please read the entire full-version user guide carefully before using the product.

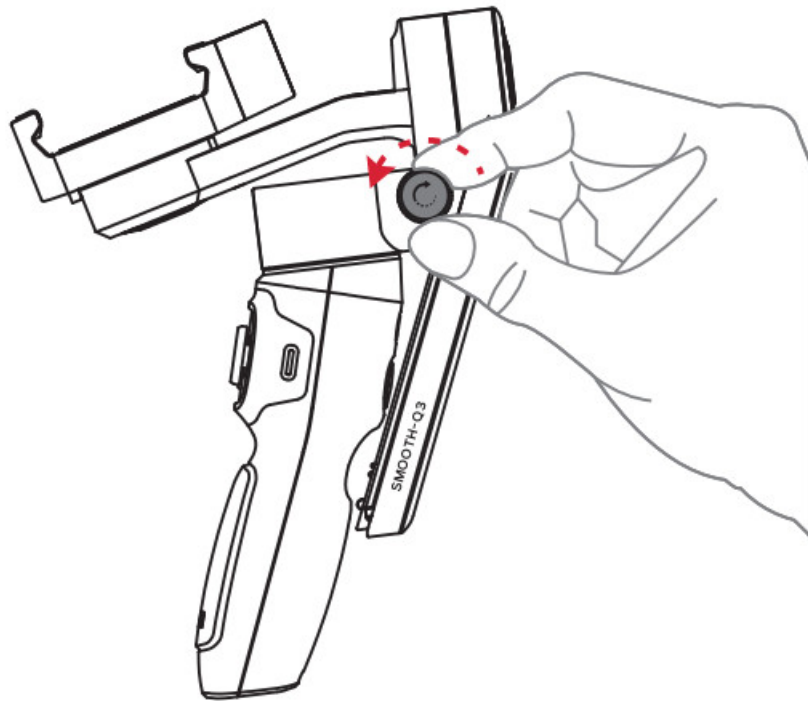
Charging

Use provided Type-C cable to connect the power adapter (not included in the package, 5V2A rated power adapter recommended) to the charging port on the stabilizer. The four indicator lights on the stabilizer stay on when charging is completed.

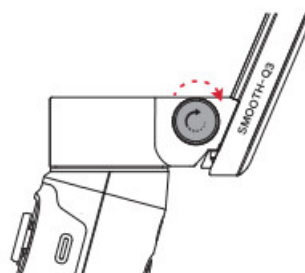
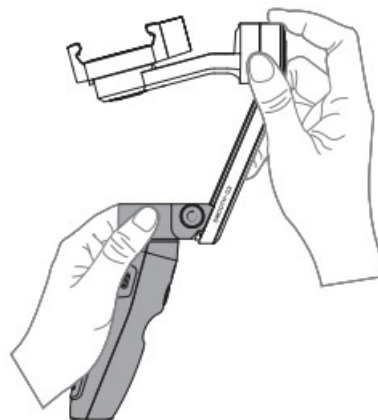
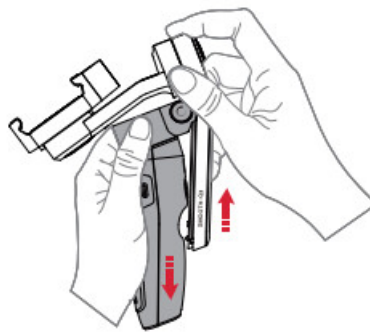


Installation and Balance Adjustment

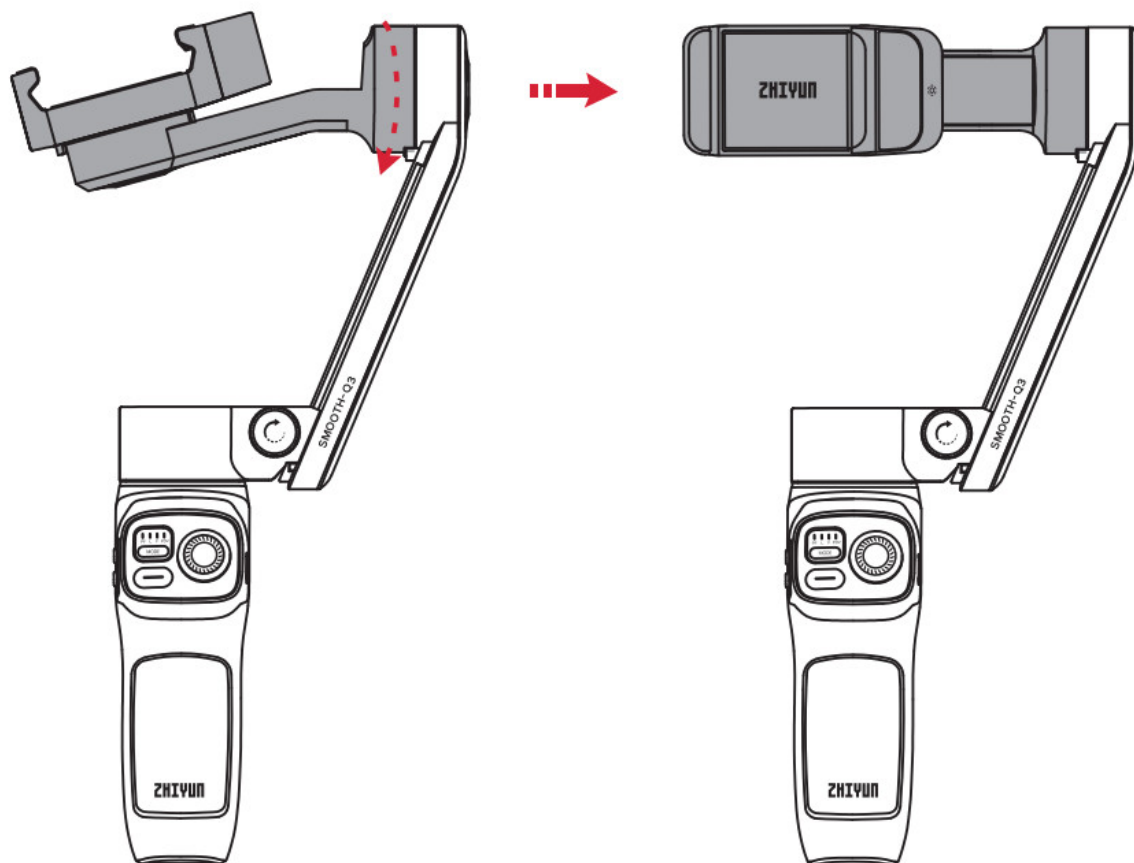
1. Loosen the lock screw of the vertical arm counterclockwise.



2. To ensure good contact with the contact points, pull the pan axis motor to the bottom of the vertical arm while holding the roll and pan axes motors until you hear a “click” sound. Tighten the lock screw of the vertical arm clockwise.

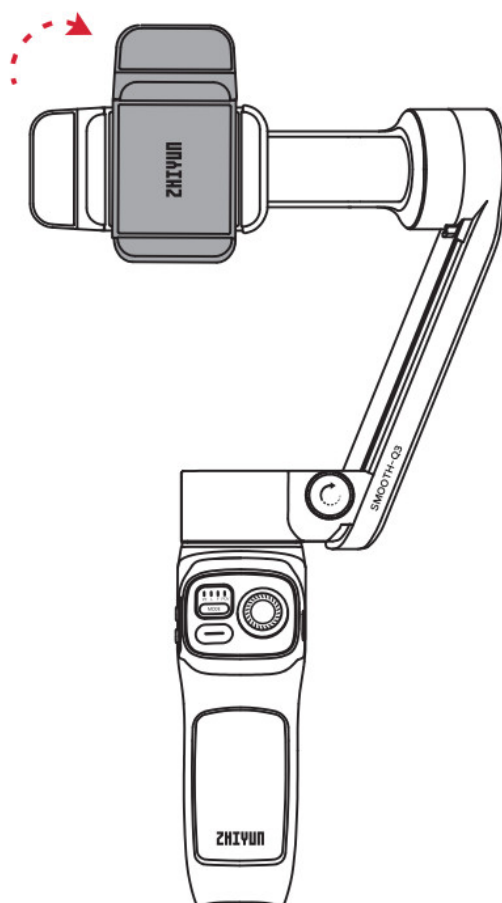


3. Rotate the tilt axis arm along the outer edge shown in the image.



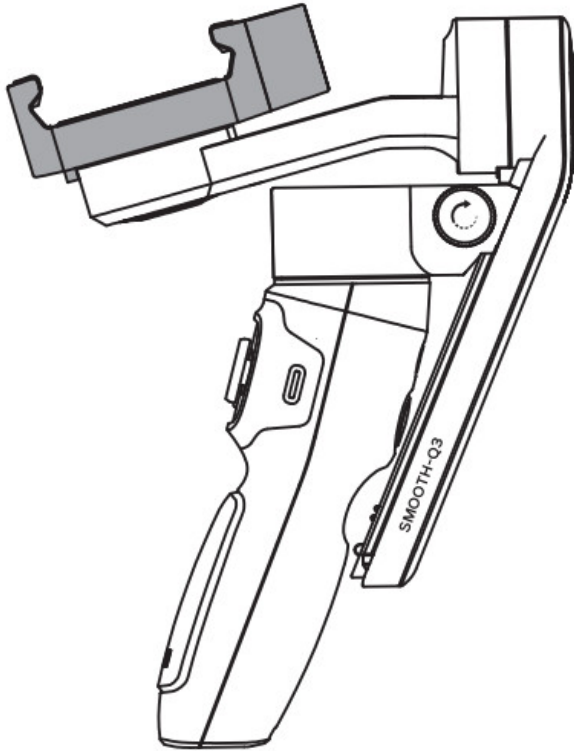
Please rotate in the correct direction shown in the image to prevent the fixing buckle of the tilt axis from damaging.

4. Rotate the phone clamp 90° clockwise to the position shown in the image. (The direction shown in the image is for when the phone clamp is tightened).

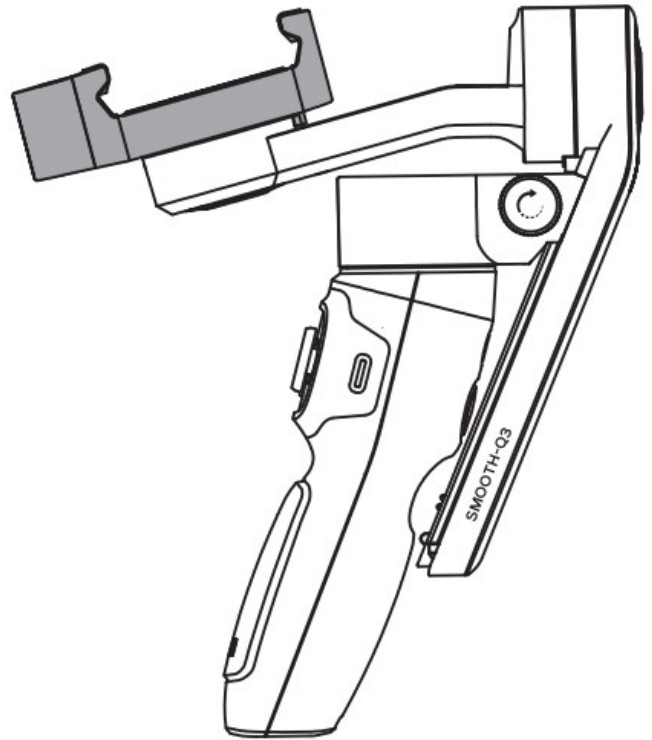




When putting the stabilizer back into the box, please rotate the phone clamp to the storage state as shown in the image.

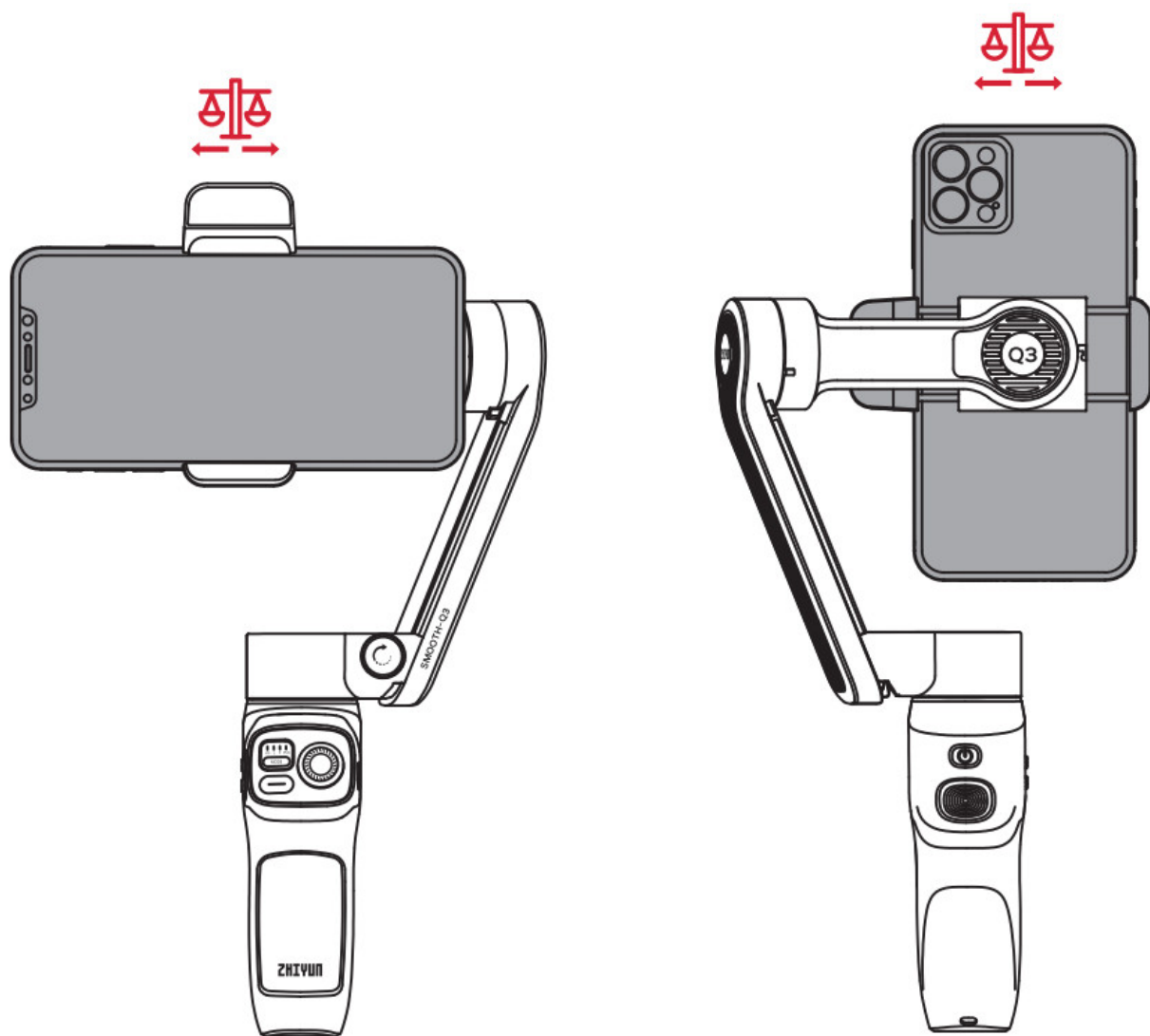


Storage state

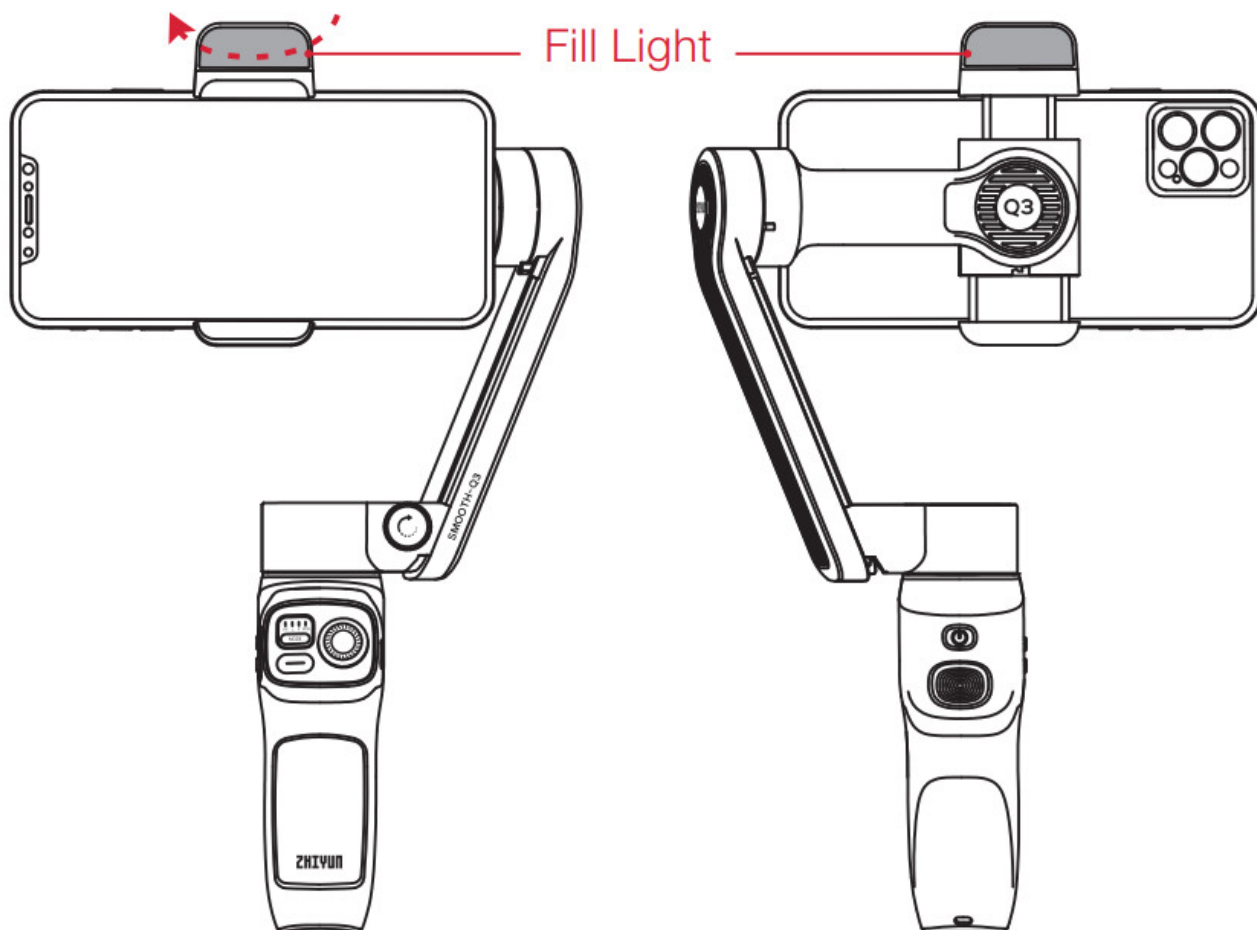


Phone clamp tightened

5. When mounting the phone, make sure the phone camera is on the left side of the clamp and adjust the balance for shooting in landscape or portrait mode.

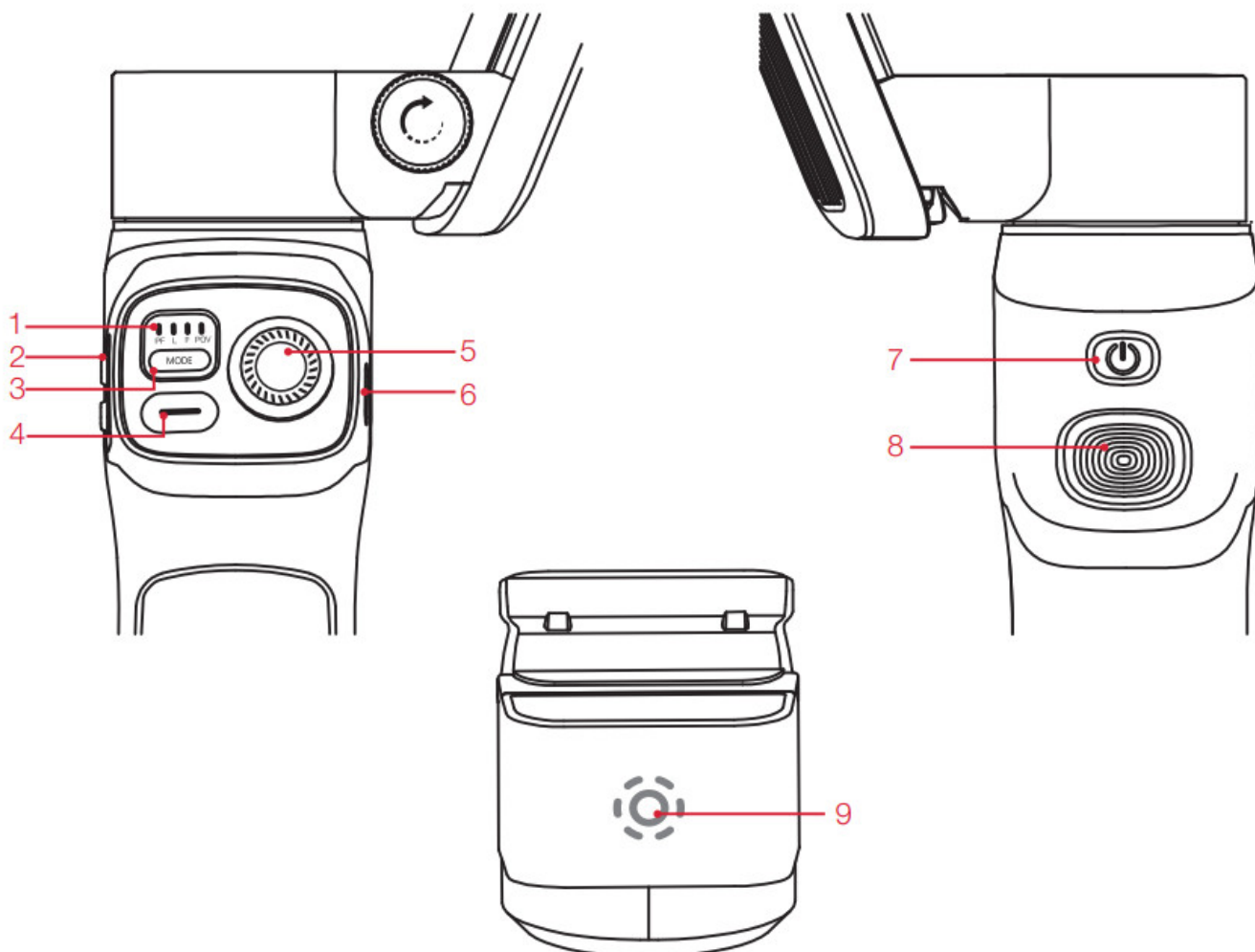


6. Rotate the fill light when needed. The maximum rotate angle is 180.



Please rotate in the correct direction.

Button Description



1. Indicator Lights

2. Zoom Rocker

3. MODE Button

- Single press to switch stabilizer modes. Double press to go back to the previous mode. Press and hold to enter/exit standby mode.

4. Photo/Video

- Single press to take photos/film videos. Double press to switch photo/video mode. Press three times to switch front/rear camera. Press and hold to take multiple photos.

5. Joystick

6. Type-C Charging/Firmware Update Port

7. Power Button

- Single press to check the battery level. Press and hold for 3 seconds to power on/off. Press 8 times to reset Bluetooth.

8. Trigger Button

- Single press to enable Smart Following. Double press for reposition. Triple press to switch between Landscape Mode and Portrait Mode. Press and hold to enter PhoneGo Mode.

9. Fill Light Switch/Brightness Switch

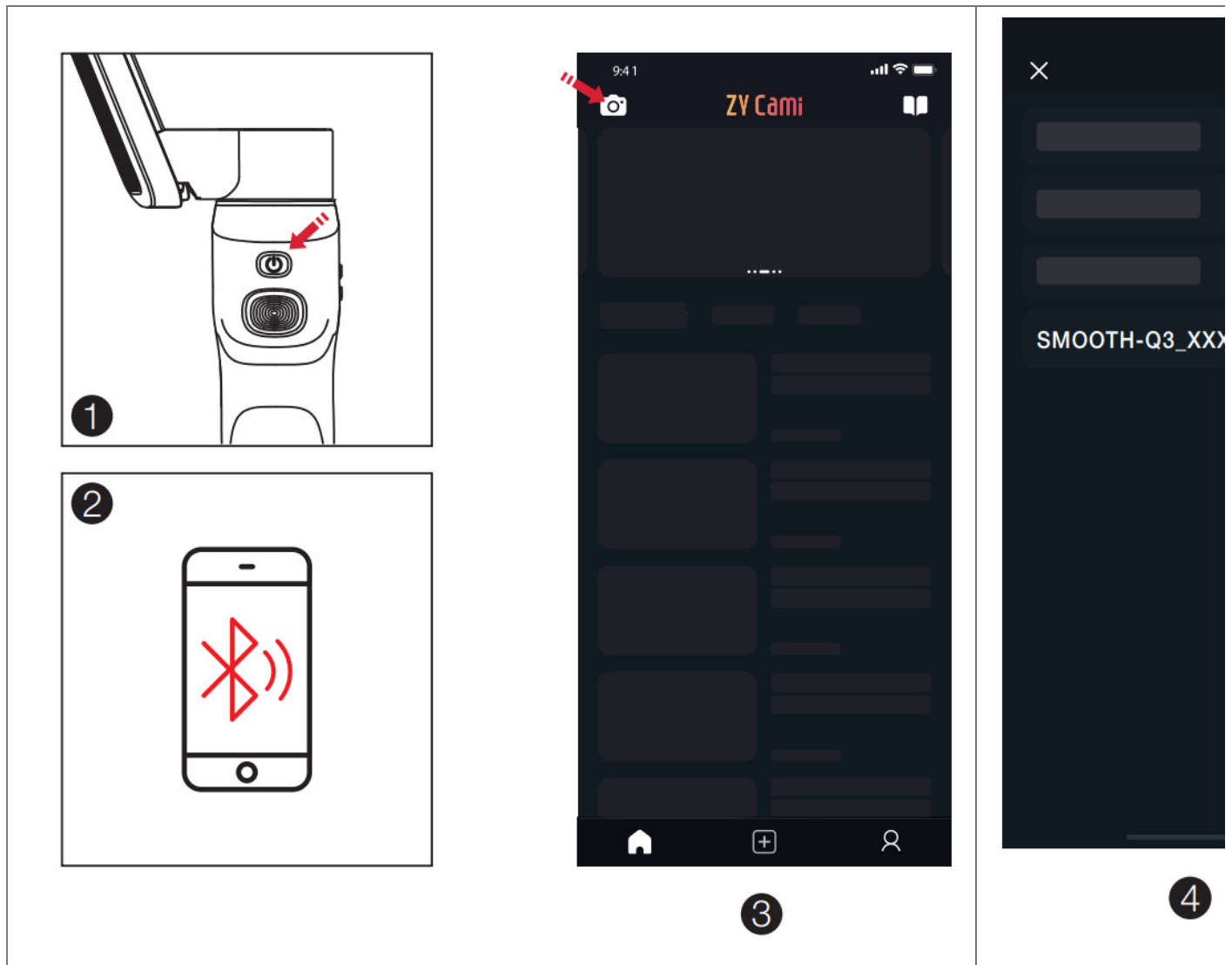
- When the device is powered on, single press to adjust brightness in three levels. Press and hold for 1.5s to turn on/off the fill light.


Connect with “ZY Cami”APP

1. Power on SMOOTH-Q3 and turn on Bluetooth on the smartphone.
2. Launch the “ZY Cami” app. Tap the icon in the upper left corner in the home screen to open the device list and select the SMOOTH-Q3 device you wish to connect (the SMOOTH-Q3 Bluetooth name can be checked on the side of the tilt axis USER ID: XXXX).



- ① Users can make better use of the various functions of SMOOTH-Q3 with the dedicated app “ZY Cami”.
- ② ZY Cami is subject to update. Please always refer to the latest version.



<div><div></div><div>03 目录</div></div> <div><div>SMOOTH-Q3</div><div><ul style="list-style-type: none">· 04-产品介绍· 05-快速入门指南· 06-快速入门指南· 07-快速入门指南· 08-快速入门指南· 09-快速入门指南· 10-快速入门指南· 11-快速入门指南· 12-快速入门指南· 13-快速入门指南· 14-快速入门指南· 15-快速入门指南· 16-快速入门指南· 17-快速入门指南· 18-快速入门指南· 19-快速入门指南· 20-快速入门指南· 21-快速入门指南· 22-快速入门指南· 23-快速入门指南· 24-快速入门指南· 25-快速入门指南· 26-快速入门指南· 27-快速入门指南· 28-快速入门指南· 29-快速入门指南· 30-快速入门指南· 31-快速入门指南· 32-快速入门指南· 33-快速入门指南· 34-快速入门指南· 35-快速入门指南· 36-快速入门指南· 37-快速入门指南· 38-快速入门指南· 39-快速入门指南· 40-快速入门指南· 41-快速入门指南· 42-快速入门指南· 43-快速入门指南· 44-快速入门指南· 45-快速入门指南· 46-快速入门指南· 47-快速入门指南· 48-快速入门指南· 49-快速入门指南· 50-快速入门指南· 51-快速入门指南· 52-快速入门指南· 53-快速入门指南· 54-快速入门指南· 55-快速入门指南· 56-快速入门指南· 57-快速入门指南· 58-快速入门指南· 59-快速入门指南· 60-快速入门指南· 61-快速入门指南· 62-快速入门指南· 63-快速入门指南· 64-快速入门指南· 65-快速入门指南· 66-快速入门指南· 67-快速入门指南· 68-快速入门指南· 69-快速入门指南· 70-快速入门指南· 71-快速入门指南· 72-快速入门指南· 73-快速入门指南· 74-快速入门指南· 75-快速入门指南· 76-快速入门指南· 77-快速入门指南· 78-快速入门指南· 79-快速入门指南· 80-快速入门指南· 81-快速入门指南· 82-快速入门指南· 83-快速入门指南· 84-快速入门指南· 85-快速入门指南· 86-快速入门指南· 87-快速入门指南· 88-快速入门指南· 89-快速入门指南· 90-快速入门指南· 91-快速入门指南· 92-快速入门指南· 93-快速入门指南· 94-快速入门指南· 95-快速入门指南· 96-快速入门指南· 97-快速入门指南· 98-快速入门指南· 99-快速入门指南· 100-快速入门指南</div></div>	<div><div>ZHIYUN SMOOTH-Q3 3-axis Stabilizer [pdf] User Guide</div><div>SMOOTH-Q3, 3-axis Stabilizer, SMOOTH-Q3 3-axis Stabilizer, Stabilizer</div></div>
---	--

References

-  [ZHIYUN-TECH](#)
-  [ZHIYUN-TECH](#)