



ZHIYUN GMB-EX1A03 TransMount Crane 3S SmartSling Handle User Guide

[Home](#) » [ZHIYUN](#) » ZHIYUN GMB-EX1A03 TransMount Crane 3S SmartSling Handle User Guide 



GMB-EX1A03 TransMount Crane 3S SmartSling Handle User Guide

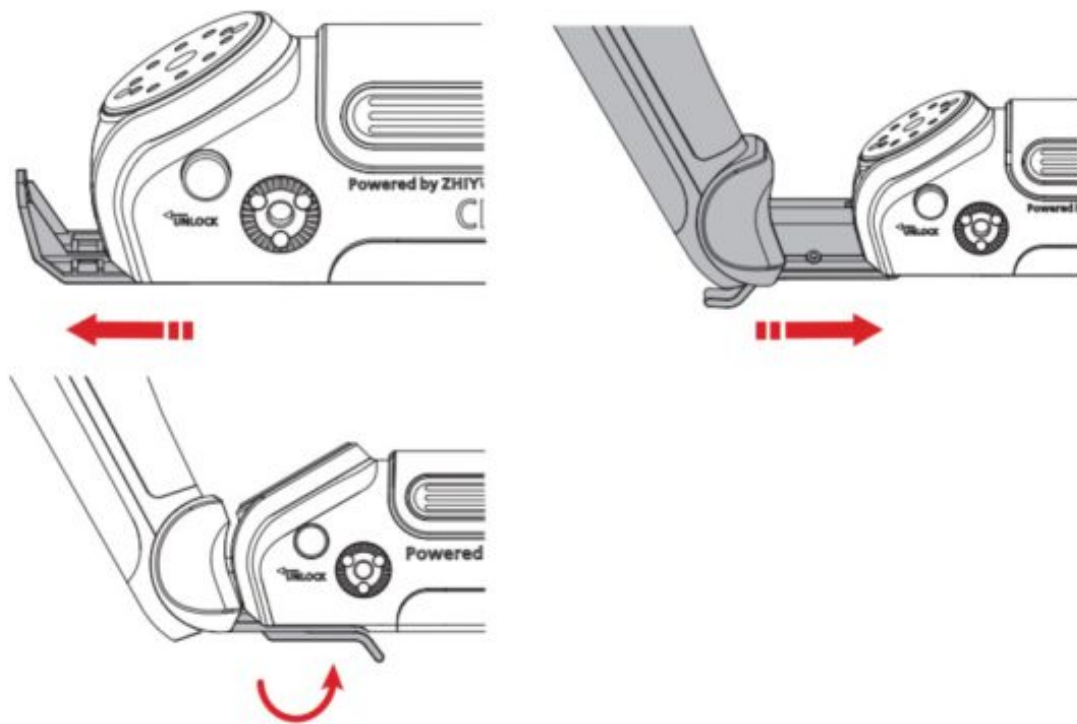
TransMount CRANE 3S SmartSling Handle (hereinafter referred to as “Handle”) can be used as a sling handle and stabilizer remote controller. The package contains a Handle and a User Guide.



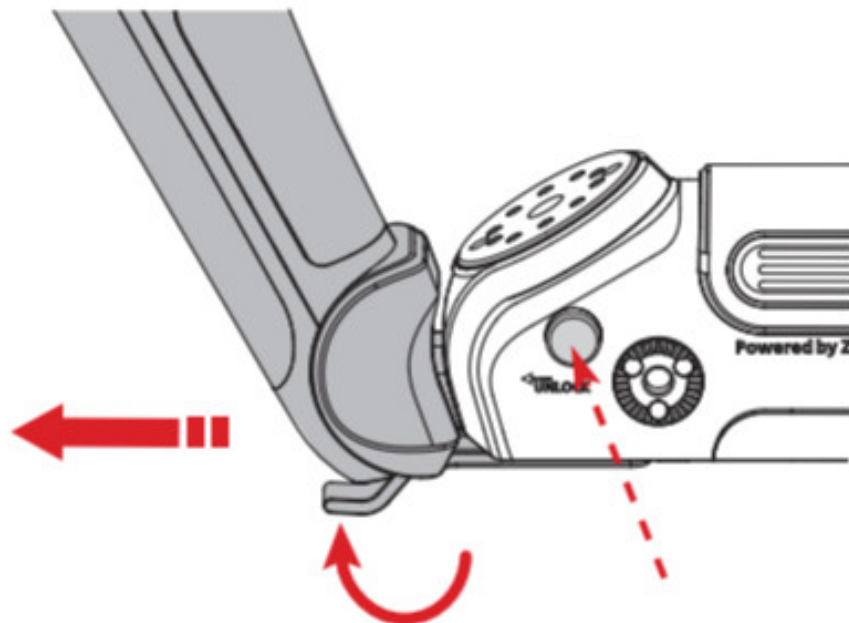
The installation instruction takes ZHIYUN CRANE 3S as an example.

TransMount CRANE 3S SmartSling Handle Installation and Detachment

1. Pull out the protective cover on the bottom of the CRANE 3S battery compartment and push the Handle into the slot until the security lock is engaged. Slightly lift up the handle to make contact with the pins and then pull the latch until it is attached to the bottom of the battery compartment to finish the installation.

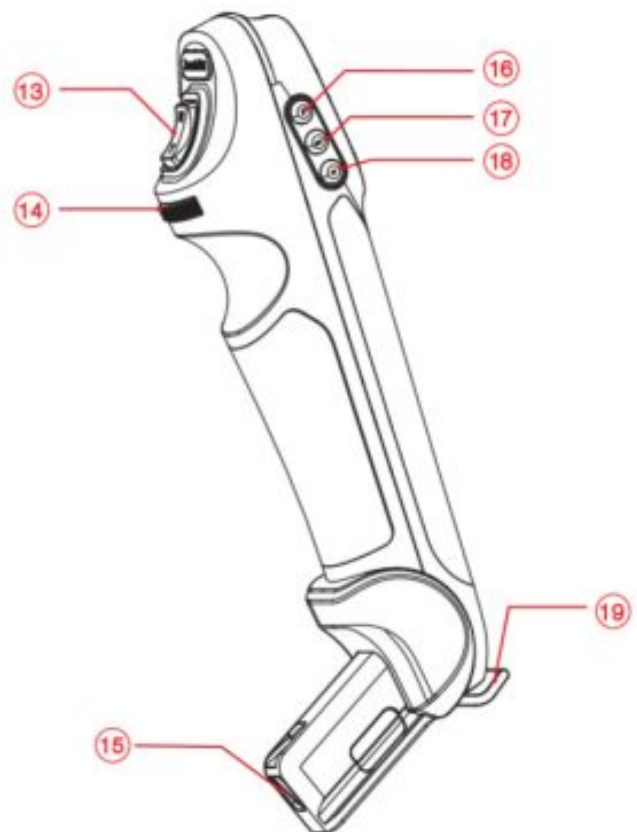
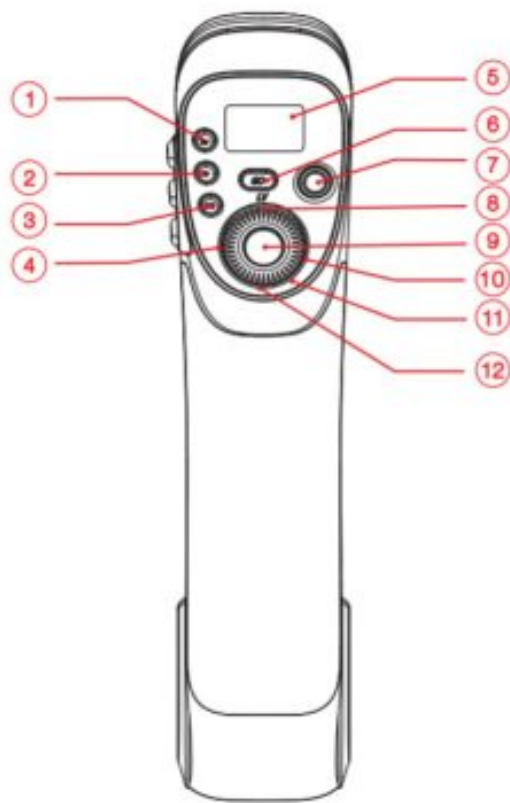


2. When disassembling, please first unlock the latch, then press and hold the security lock to pull out the Handle.



Please check pins of CRANE 3S and Handle before installation. If they're dirty – spots on pins, please wipe them with a clean and dry cloth, otherwise, it may cause damage to the pins.

Get to Know TransMount CRANE 3S SmartSling Handle



1. TV Button [TV]
Single press the button to enter the shutter parameter settings interface.
2. AV Button [AV]
Single press the button to enter the aperture parameter settings interface.
3. 1 ISO Button [ISO]
Single press the button to enter the ISO parameter settings interface.
4. Left[ISO]
 - On the main screen, single press to move to the previous option.
 - In the menu screen, single press to move to the previous screen.
5. OLED Display
Stabilizer status and camera parameters.
6. Go Mode Button [GO]
Press and hold the button to enter Go ("Sport" Mode) Mode, then the stabilizer responsivity will speed up.
7. Record Button [◀]
Single press to start/end video recording.
8. LV Button
Single press the button, the camera enters or exits the Live Preview Mode.
9. Shutter Button
 - Half-press to activate autofocus.
 - Full-press to take photos.
10. Right [▶]
 - On the main screen, single press to move the next option.
 - In the menu screen, single press to confirm the selection.
11. Dial
On the main screen, rotate the dial to switch between options.

12. Menu [●●●]

Single press to enter or exit the menu.

13. WT Zoom Rocker

Control electronic zoom of some cameras or TransMount Servo/Focus Controller.

14. Parameter Dial

Rotate the dial to quickly adjust camera parameters.

15. Pin

Connecting joint of Handle and CRANE 3S for controlling stabilizer.

16. Following Mode [F]

Single press to enter Following Mode and single press again to move to the previous model.

17. POV/Vortex Mode Button [POV]

- Single press to enter POV Mode (Point of View Mode) and single press again to move the previous model.
- Double press to enter Vortex Mode and single press again to move to the previous model.

18. Reset Button [RE]

Single press the button to reset the position of the stabilizer.(Unavailable under POV Mode and Vortex Mode)

19. Latch

Tighten or loosen the connection of Handle and CRANE 3S.

Contents

- [1 OLED Display Description](#)
- [2 Menu Option Description](#)
- [3 Disclaimer and Warning](#)
- [4 Warnings](#)
- [5 Safe Operation Guidelines](#)
- [6 Warranty card](#)
- [7 FCC Caution.](#)
- [8 Documents / Resources](#)
- [9 Related Posts](#)

OLED Display Description



Camera Params settings
Unadjustable



Menu Screen



Camera Params settings
Adjustable



Axis Locked





Connecting with
Sony Cameras



Standby Mode

Icon Description

	Camera connected with stabilizer.
	Video Mode
	Photo Mode
	Battery Level (stabilizer)
	This icon prompts when the axis is locked and the stabilizer will make a beep sound. Please unlock the axis and long-press the POV Button to resume operation)
	The stabilizer is on Standby
PF	Pan Following Mode
L	Locking Mode
POV	Point Of View Mode
V	Vortex Mode
F	Following Mode
GO	Go Mode
AV	AV
TV	TV
ISO	ISO
	EV

Menu Option Description

Motor (Motor torque settings)	auto	
	custom	Tilt Axis
		Roll Axis
		Pan Axis
	level	Low (Low torque)
		mid-low (Medium-low torque)
		medium (Medium torque)
		mid-high (Medium-high torque)
		high (High torque)
		ultra (Ultra-high torque)
camera (Camera Control settings)	close (Close the interface)	
	Canon	
	Sony	
	sony – USB*	A7C
		A9
		A7S-3
	Panasonic (Panasonic)	
	Nikon	
	CCS (Expansion interface: image transmission module, etc)	
	Fuji (Fujifilm)	
	Olympus	
	v_Canon (Canon cinema camera)	
	v_Sony (Sony cinema camera)	
	zcam	
	bmpcc	
	sigma	
	red	

tracking” (Tracking Settings)	Lens	16mm/24mm/35mm/50mm/70mm/105mm	
trajectory** (Trajectory Shooting)	Preset	Two preset paths available: preset 1 / preset 2	
	Modes	Two modes available: photo/video	
	points (Key Points)	Five at most key points can be set (A, B, C, D, E)	
	Time	“interval* for the time interval of photo taking, “duration* for the total amount of time	
	Preview	Quick preview of the set path	
	Start	Enable motion lapse	
wheel (control wheel settings)	Sensi(control wheel sensitivity)	low	
		medium	
		high	
	AB Point****	A(Set the current wheel position as A point)	
		B(Set the current wheel position as B point)	
		clear(Clear AB Points)	
	priority (Priority on wheel)	handle (Prioritize handle control)	
		external (Prioritize external control)	
		off (Disable follow focus wheel)	
	reverse (Control the wheel in the reverse direction)	off	
		on	
joystick (Joystick settings)	reverse (control the joystick in reverse direction)	vertical	off
			on
		horizontal	off
			on
rocker (WT Zoom Rocker settings)	sensi (rocker sensitivity)	low	
		medium	
		high	
	AB Point****	A (Set the current wheel position as A point)	
		B (Set the current wheel position as B point)	

	clear (Clear AB Points)	
	reverse (control the rocker in reverse direction)	of
		on
calibration (Calibration settings)	yes (Enter six-side calibration)	
	no (Exit calibration settings)	
angle(fine-tuning motor angle)	pitch (Fine-tune the angle of tilt axis)	
	roll (Fine-tune the angle of roll axis)	
focus(follow focus and zoom/focus controller settings)	Lite	upgrade (upgrade firmware of TransMount Servo Focus Motor (Lite))
	Max	upgrade (upgrade the firmware of TransMount Servo Zoom/Focus Motor (Max))

Key (customization)	Fn (Fn button)	DEFAULT
		PF
		L
		F
		POV
		GO
		V
about	CRANE 3S (gimbal model) V X.XX (firmware version) ID: XXXX (Bluetooth name)	CCS Ver VX.XX (Image transmission transmitter firmware version) HV X.XX (SmartSling handle firmware version)



*For the difference between selecting a Sony camera and Sony USB, please visit the official = website of ZHIYUN and check the camera compatibility list for CRANE 3S.

**For better tracking results, please choose the current focal length corresponding to the lens in the menu.
(For example, if the current focal length of the lens is 50mm then choose 50mm” in the menu.)

***Double click the video button on the SmartSling handle to exit trajectory shooting.

****AB point settings are only available when connecting to ZHIYUN Servo Follow Focus correctly.

Disclaimer and Warning

Thank you for purchasing TransMount CRANE 3S SmartSling Handle. The information contains herein affects your safety, legitimate rights and obligation. Please read this Instruction carefully to ensure proper configuration before use. Failure to read and follow this instruction and warnings herein may result in serious injury to you or bystanders, or damage to your device or property. Guilin Zhishen Information technology Co., Ltd reserves all rights for a final explanation on this Instruction and other documents related to TransMount CRANE 3S SmartSling Handle. The information is subject to update without notice. Please visit www.zhiyun-tech.com to obtain the latest product information.

By using this product, you hereby signify that you have read this document carefully and that you understand and agree to abide by the terms and conditions herein. You agree that you are solely responsible for your own conduct

while using this product, and for any consequences thereof. You agree to use this product only for purposes that are proper and in accordance with all terms, precautions, practices, policies and guidelines ZHIYUN has made and may make available.

ZHIYUN accepts no liability for damage, injury or any legal responsibility incurred directly or indirectly from the use of this product. Users shall observe safe and lawful practices including, but not limited to, those set forth herein.

ZHIYUN™, TransMount™ are the trademarks of Guilin Zhishen Information Technology Co., Ltd. (hereinafter referred to as “ZHIYUN” or “ZHIYUN TECH”) and its affiliates. All product names or trademarks referred to herein are trademarks or registered trademarks of their respective holders.

Warnings

Read the ENTIRE User Guide to become familiar with the features of this product before operating. Failure to operate the product correctly can result in damage to the product or personal property and cause serious injury. This is a sophisticated product. It must be operated with caution and common sense and requires some basic mechanical ability. Failure to operate this product in a safe and responsible manner could result in injury or damage to the product or other property. This product is not intended for use by children without direct adult supervision. DO NOT use with incompatible components or in any way otherwise as mentioned or instructed in the product documents provided by ZHIYUN. The safety guidelines herein contain instructions for safety, operation and maintenance. It is essential to read and follow all of the instructions and warnings in the User Guide, prior to assembly, setup or use, in order to operate the product correctly and avoid damage or serious injury.

Safe Operation Guidelines

CAUTION:

1. TransMount CRANE 3S SmartSling Handle is a high-precision control device.
Damage may be caused to the controller if it is dropped or subject to external force, and this may result in malfunction.
2. TransMount CRANE 3S SmartSling Handle is not waterproof. Prevent contacts of any kind of liquid or cleaner with the controller. It is recommended to use a dry cloth for cleaning.
3. Protect TransMount CRANE 3S SmartSling Handle from dust and sand during use.

Warranty Period

1. Customers are entitled to a replacement or free repair service in case of the quality defect(s) found in the product within 15 days upon receipt of the product.
2. Customers are entitled to free repair service from ZHIYUN for any product proven defective in material or workmanship that results in product failure during normal consumer usage and conditions within the valid warranty period, which is 12 months counting from the date of selling. However, the warranty period varies by product component and country of purchase. Please contact our after-sales service team on the ZHIYUN official website or your place of purchase for detailed warranty information.

Warranty Exclusions

1. Products subjected to unauthorized repair, misuse, collision, neglect, mishandling, soaking, accident, and unauthorized alteration.
2. Products subject to improper use or whose labels or security tags have been torn off or altered.
3. Products whose warranty has expired.
4. Products damaged due to force majeure, such as fire, flood, lightning, etc.

Warranty Claim Procedure

1. If failure or any problem occurs to your product after purchase, please contact a local agent for assistance, or you can always contact ZHIYUN's customer service through email at service@zhiyun-tech.com or website at www.zhiyun-tech.com.
2. Your local agent Or ZHIYUN's customer service will guide you through the whole service procedure regarding any product issue or problem you have encountered.

ZHIYUN reserves the right to reexamine damaged or returned products.

Warranty card

Product model: EX1A03

Custom information

Customer Name:

Address:

Contact No

Sales Information

Sales Date:

Dealer:

Contact No

Prod. Serial No :

#1 Maintenance Record

Service Date :

Signature of Repairman:

Cause of Problem :

Service Result:	<input type="checkbox"/> Solved	<input type="checkbox"/> Unsolved	<input type="checkbox"/> Refunded (Replaced)
------------------------	---------------------------------	-----------------------------------	--



Please download the latest version from www.zhiyun-tech.com

This document is subject to change without notice. ZHIYUN™, TransMount™ are trademarks of Guilin Zhishen Information Technology Co., Ltd. Copyright © 2021 Guilin Zhishen Information Technology Co., Ltd. All rights reserved.

Tel: +86 400 900 6868

USA Hotline: +1 808-319-6137,9:00-18:00 GMT-7,Mon-Fri Europe Hotline: +49 (0)6101 8132 180,10:00-17:00 GMT+1,Mon-Fri
Email: service@zhiyun-tech.com
Website: www.zhiyun-tech.com
Address: 09 Huangtong Road, Tieshan Industrial Zone, Qixing District, Guilin, 541004, Guangxi, China.

FCC Caution.

This device complies with part 15 of the FCC Rules. Operation is subject to the following two conditions: (1) This device may not cause harmful interference, and (2) this device must accept any interference received, including interference that may cause undesired operation.

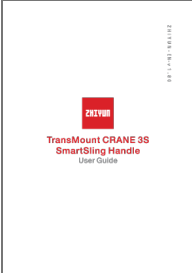
NOTE: The manufacturer is not responsible for any radio or TV interference caused by unauthorized modifications or changes to this equipment. Such modifications or changes could void the user’s authority to operate the equipment.

Note: This equipment has been tested and found to comply with the limits for a Class B digital device, pursuant to part 15 of the FCC Rules. These limits are designed to provide reasonable protection against harmful interference in a residential installation. This equipment generates uses and can radiate radio frequency energy and, if not installed and used in accordance with the instructions, may cause harmful interference to radio communications. However, there is no guarantee that interference will not occur in a particular installation. If this equipment does cause harmful interference to radio or television reception, which can be determined by turning the equipment off and on, the user is encouraged to try to correct the interference by one or more of the following measures:

- Reorient or relocate the receiving antenna.
- Increase the separation between the equipment and receiver.
- Connect the equipment into an outlet on a circuit different from that to which the receiver is connected.
- Consult the dealer or an experienced radio/TV technician for help.

www.zhiyun-tech.com

Documents / Resources

	<p>ZHIYUN GMB-EX1A03 TransMount Crane 3S SmartSling Handle [pdf] User Guide GMB-EX1A03, TransMount Crane 3S SmartSling Handle, GMB-EX1A03 TransMount Crane 3S SmartSling Handle, Crane 3S SmartSling Handle, SmartSling Handle, Handle</p>
---	--