



Contents [[hide](#)]

- [1 ZHIYUN CX50RGB COB Light](#)
- [2 Battery safety precautions](#)
- [3 Product List](#)
- [4 Battery and charging instructions](#)
- [5 Installing and Removing the Reflector](#)
- [6 Operation Instruction](#)
- [7 Firmware Upgrade](#)
- [8 Product Specifications](#)
- [9 Contact](#)
- [10 FCC Statement](#)
- [11 FAQ](#)
- [12 Documents / Resources](#)
 - [12.1 References](#)

ZHIYUN

ZHIYUN CX50RGB COB Light



ZHIYUN MOLUS X50RGB is a high-power, portable, full-color fill light. It boasts a stylish appearance and compact size, and supports RGB adjustment functions. It also features a variety of creative light effects, making professional light effects easily achievable. The product has the following highlights:

1. Lightweight, portable and easy to use.
2. Features adjustable brightness/color temperature/hue/saturation, suitable for a wide range of applications.
3. Features high color rendering performance for accurately restoring the original color of objects.
4. Equipped with DynaVort Cooling System™ for excellent heat dissipation
5. Features built-in RGB effects for creative shooting
6. Supports Bluetooth mesh networking and APP remote dimming for more efficient light control.
7. Supports multiple power supply methods, including built-in battery, USB adapter, and DC power adapter, eliminating runtime concerns.
8. Offers various installation and usage methods, can be handheld, mounted on a tripod, or used with a light stand

WARNING

This product is not waterproof. Prevent contact with any kind of liquid . Never use the product in the rain or a humid environment.

- If water accidentally enters the device when using it, please stop using it immediately and contact the company or authorized maintenance personnel for maintenance, and continue to use it only when the maintenance is finished.
- Do not expose this product to corrosive chemicals, inflammable, or explosive materials.
- Please connect the device to a grounded outlet before using.
- Do not touch the heating part when the product is working to avoid getting burned.
- Do not wrap or block the fans to avoid the cooling effect.
- Do not turn the product directly to the eyes to avoid eye damage.
- Do not expose this product to an environment above 40°C.

Battery safety precautions

1. It is strictly prohibited to use batteries that are not provided by ZHIYUN. If you need to replace the battery, please contact ZHIYUN or designated agents. ZHIYUN will not be responsible for any battery accidents or equipment malfunctions caused by using batteries that are not officially provided by ZHIYUN.
2. If the battery bulges, leaks, or has other abnormalities, please stop using it immediately and contact ZHIYUN customer service or designated agents for further processing.
3. Do not completely discharge the battery and store it for a long time to prevent the battery from entering an over-discharged state and causing damage to the battery cell, which may make it impossible to recover and reuse.

BE CAREFUL

1. This product is a high-precision control device. Damage may be caused to the product if dropped or subject to external force, and this may result in malfunction.
2. Please keep your hands dry while using the product and use soft dry cloth for cleaning.
3. Keep this product out of the reach of children.
4. When not using this product, please disconnect the external power supply.
5. Do not place any other items on top of this product to avoid damage to this product.
6. Protect the product from dust and sand during use.
7. Before storing this product, please make sure it is completely cooled and store it in a

dry and ventilated place.

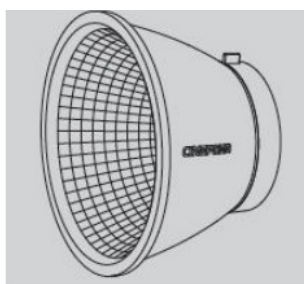
8. Do not disassemble this product on your own. In the event of malfunctions, it should be repaired by ZHIYUN or authorized maintenance personnel

Product List

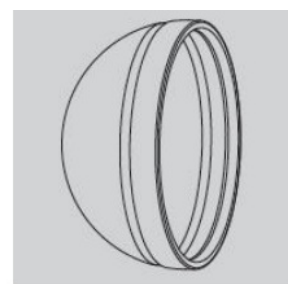
Before using this product, please check carefully that all the following items are included in the product package. In case any item is found missing, please contact ZHIYUN or your local selling agent.



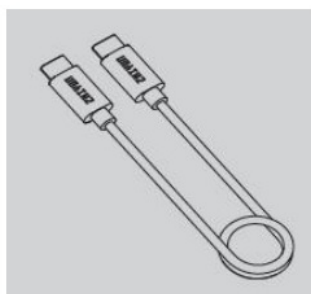
Fill Light x1



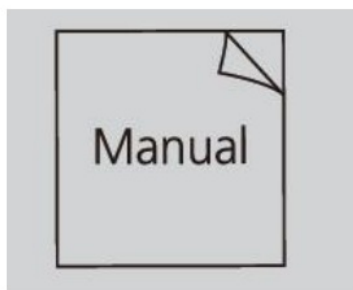
Reflector x1



Silicone Diffusion Dome x1



USB Type C Cable x1



Quick Start Guide x1

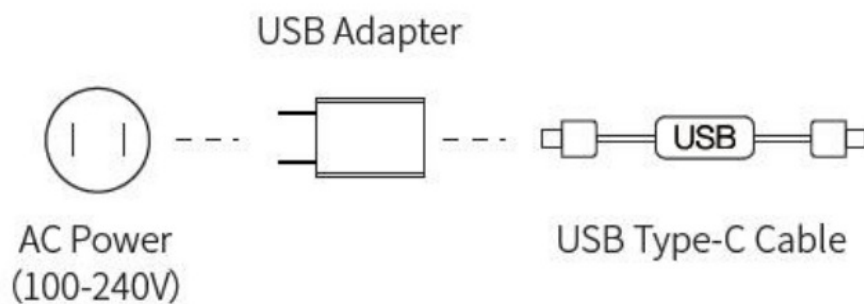
Get to Know ZHIYUN CINEPEER CX50RGB COB Light (hereinafter referred to as “CX50RGB”)



Battery and charging instructions

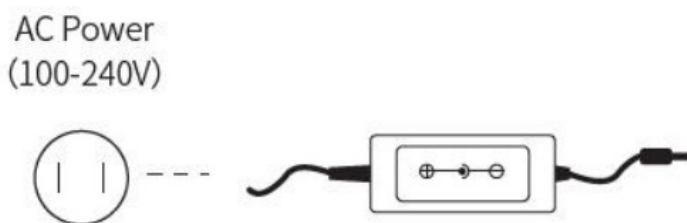
This product uses a built-in battery. Before first use, please fully charge the light to activate the battery. To ensure the smooth operation of the product, please use the following methods for charging:

1. Power via USB adapter: Use the provided USB Type-C charging cable to connect the USB adapter (not provided) and the USB-C power supply port of the CX50RGB. Plug the adapter into the AC socket to power the CX50RGB. It is recommended to use an adapter that supports PD fast charging protocol. When using the light while charging, the USB adapter will prioritize powering CX50RGB, and any remaining power will be used to charge the battery. The battery charging power supports up to 30W.



Please power off CX50RGB to charge.

2. Power via DC power adapter: Connect the DC power adapter to the DC power supply port and an AC socket to power CX50RGB.



It is recommended to use a 24V/2.7A DC power adapter to charge CX50RGB. Please note that the DC power adapter is not included and needs to be provided separately.

Installing and Removing the Reflector

Installing and the Reflector

Align the reflector mount with CX50RGB accessory mount. Install the reflector to CX50RGB and rotate the reflector as shown in the image until you hear a click sound. The reflector is then installed



Removing the Reflector

Push the latch of the reflector in the direction shown in Figure ①, while simultaneously rotating the reflector counterclockwise ②. Then, remove the reflector from the accessory mount③.



Installing and Removing the Silicone Diffusion Dome (hereinafter referred to as “diffusion dome”)

Installing the Diffusion Dome

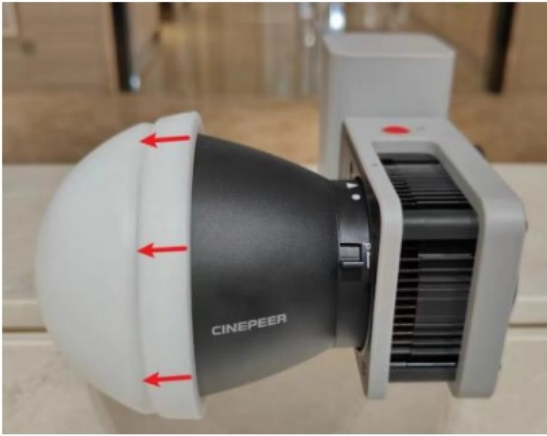
Install the reflector onto CX50RGB, expand the diffusion dome to the state shown in the

figure. Align the opening of the diffusion dome with the reflector, then fit the circular groove of the diffusion dome onto the end of the reflector. The installation is now complete.



Removing the Diffusion Dome

Simply remove the diffusion dome from the reflector by hand.



Using with a Tripod

Align the 1/4" screw of the tripod with the 1/4" threaded hole at the bottom of CX50RGB. Drive the screw firmly to finish the installation.



Tripod is not provided.

Using with a Light Stand

Align the 1/4 screw hole at the bottom of the light with the 1/4 screw at the top of CX50RGB stand, then mount the light body onto the stand.



Please prepare the light stand separately.

How to Use ZHIYUN CINEPEER CX50RGB COB Light

- DO NOT stare at the chips when the device is operating.
- The IP rating of the outer case is IP20.



Buttons and Dials

- Long-press the power button + turn the Adjust dial/Mode dial: Power on (powered by grip battery)
- Long-press the power button: Power on (powered by USB/DC)/power off



Mode Dial:

- Single press: Switches modes
- Double press: Switches to the previous mode.
- Turn: Switches options (submenu).
 - Adjusts parameters (in CCT mode).



Adjust Dial

- Single press: Quickly adjusts the current parameter. Confirm (submenu).
- Turn: Adjusts the current parameter.

Operation Instruction

1. CCT Mode Settings

Single-press press Mode dial to switch to CCT mode. Single press or turn the Adjust dial to adjust brightness. Turn the Mode dial to adjust color temperature.

- Brightness adjustment range: 0-100%
- Color temperature adjustment range: 2700 K- 6500 K.

CCT	PD60W
BRT:	100%
CCT:	5500k

2. HSI Mode Settings

Single press Mode dial to switch to HSI mode. Turn the Mode dial to switch to hue/saturation/intensity options. Single press or turn the Adjust dial to adjust the value.

- Hue adjustment range: 0-100%
- Saturation adjustment range: 0° -360°
- Intensity adjustment range: 0-100%

HSI	PD60W
DIM:	100%
HUE:	120°
SAT:	100%

3. RGB Mode Settings

Single press Mode dial to switch to RGB mode. Turn the Mode dial to switch to RGB options. Single press or turn the Adjust dial to adjust the value.

- RGB adjustment range: 0-100%
- Brightness adjustment range: 0-100%

RGB	PD60W
R:	100%
G:	30°
B:	50% ▼

4. FX Mode Settings

Single press Mode dial to switch to FX mode. Turn the Mode dial to switch to

brightness/speed/color temperature options. Single press or turn the Adjust dial to adjust the value.

- FX types: SOS, Paparazzi, Candlelight, Faulty Bulb, TV, Lightning, Strobe, ColorTemperature Loop, Color Temperature Flash, Color Temperature Pulse, PoliceCar, Party, Fireworks, Color Loop, Color Flash, Color Pulse.
- Brightness adjustment range: 0-100%;
- Speed adjustment range: 1-5;
- Color temperature adjustment range: 2700 K- 6500 K;

FX	PD60W
FX:	SOS
DIM:	100%
SPD:	5 ▼

1. The parameter values in a single light effect are only effective for that light effect.
2. The parameter values in a single light effect are only effective for that light effect.

MENU Settings

Single press Mode dial to switch to Menu. Turn the Mode dial to switch to language/Bluetooth reset setting options. Turn the Adjust dial to adjust the chosen option. Finally, press the Adjust dial once to confirm.

MENU	PD60W
language:	English
BT Rst:	NO
Live:	off ▼

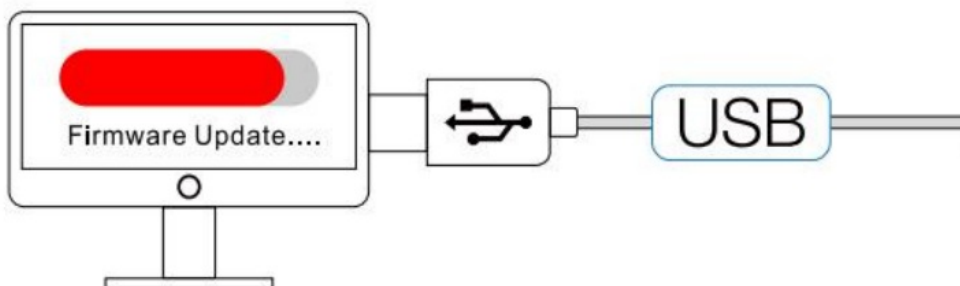
Under the “MENU” option, you can also check the firmware version information for the CX50RGB.

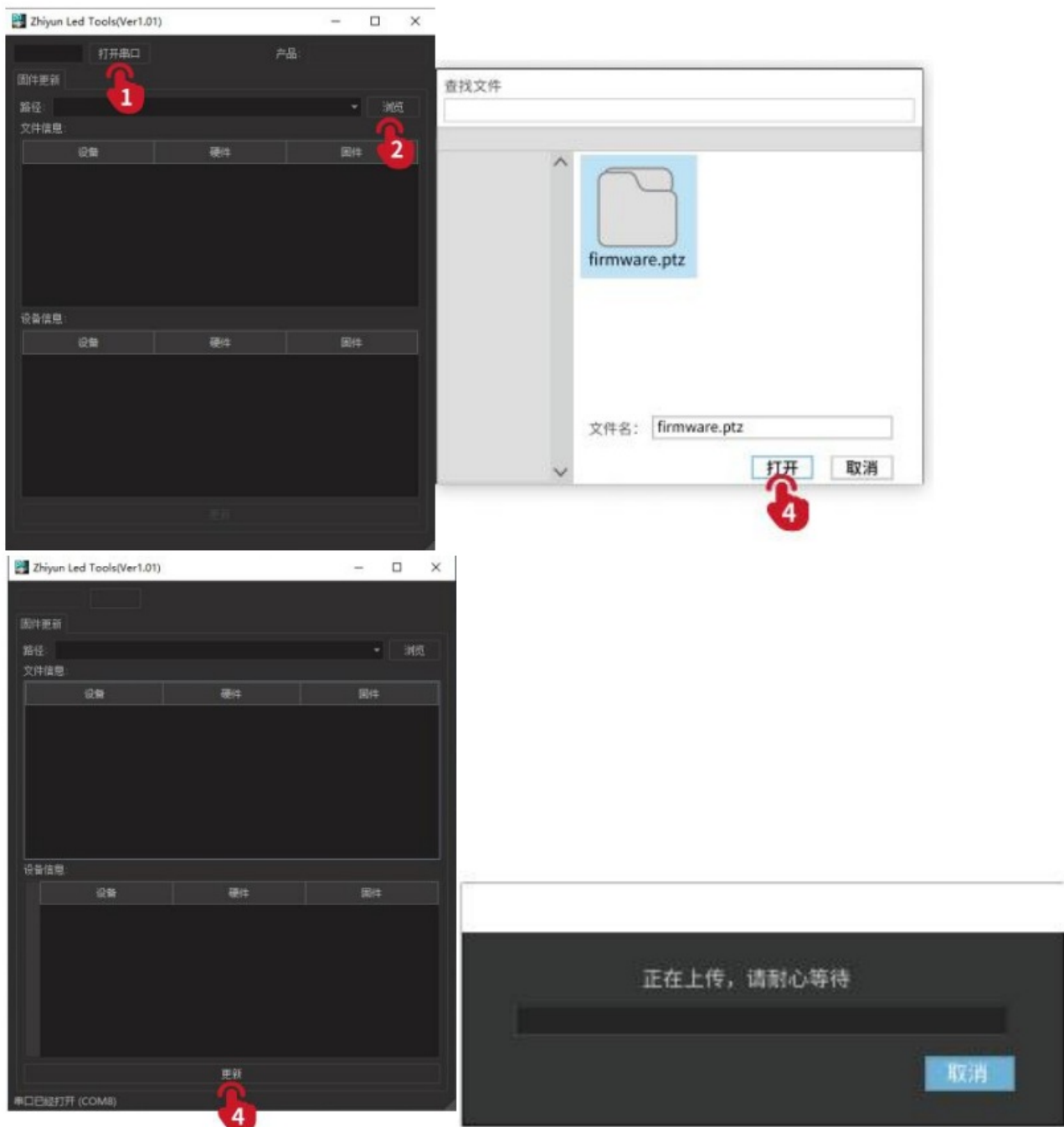
Firmware Upgrade

You can use “Zhiyun Led Tools” or “ZY Vega” to perform CX50RGB firmware upgrade.

Method 1:

1. Visit the official website of ZHIYUN (www.zhiyun-tech.com), go to the ZHIYUN CINEPEER CX50RGB COB Light product page, click “Download”, find the Zhiyun Led Tools and the firmware and download.
2. Unzip the firmware for the files with the “.ptz” file extension.
3. Connect the USB-C port of the light to the USB port of the computer with the USB Type-C cable.
4. Open “Zhiyun Led Tools”, click “Open”, and click “Firmware Upgrade”. Click “Browse” under “Path” to select the latest firmware downloaded (with the “.ptz” file extension), and click “Upgrade” at the bottom to upgrade firmware. CX50RGB will automatically turn off when the upgrade is finished.





Method 2: The firmware of the light can be upgraded using the “ZY Vega” app. For more detailed instructions, please visit the ZHIYUN official website at www.zhiyun-tech.com and watch the related video tutorials for the lighth.

1. When using Method 1 for the upgrade, please wait until the screen displays that the upgrade is finished, then you can plug out the USB Type-C cable.
2. Before upgrading the firmware, please ensure that the light has more than 50% power remaining. You can not exit the app interface or access in the background during the upgrading process. Pay attention to the prompts on the app.

Product Specifications

- Product Model PLX109

Maximum Output Power		
Battery Capacity		
Brightness Adjustment Range		
Color Temperature Range		
CRI/TLCI		
Illuminance (maximum power, without reflector)		Lab Data 1
Illuminance (maximum power, with reflector)		Lab Data 2

Runtime (max power)		Lab Data 3
Charging Time		Lab Data 4
DC Power Supply Voltage		
USB Supply Power Voltage		
Operation Temperature		
Product Size (without reflector)		

Product	Net	Weight		
(without reflector)				

- Lab Data 1: The data is collected in the following conditions: No reflectors, 25°C temperature, indoor illuminance lower than 0.1lux, test distance 1m, and the color temperature is set at 6500K with 100% brightness. The illuminance is 2680lux. The actual illuminance varies under different conditions.
- Lab Data 2: The data is collected in the following conditions: Installed reflector, 25°C temperature, indoor illuminance lower than 0.1lux, test distance 1m, and the color temperature is set at 6500K with 100% brightness. The illuminance is 10500lux. The actual illuminance varies under different conditions.
- Lab Data 3: The data is collected in the following conditions 25°C temperature, battery is fully-charged, and the color temperature is set at 6500K with 100% brightness. The battery runtime is 50 min. The actual grip battery runtime varies under different conditions: the longer the operating time, the higher the charge and discharge frequency, and the less the battery activity, leading to a shorter battery runtime.
- Lab Data 4: The data is collected at a specified temperature of 25°C with 28W PD Fast Charging. The charging time of the light is 2h 30 min. The actual charging time varies under different conditions: the lower the charging temperature, the lower the charging current, leading to a longer charging time.

Warranty Card

Thank you for purchasing this product. The information contained herein affects your safety, legitimate rights and obligations. Please read these instructions carefully to ensure proper configuration before use. Failure to read and follow these instructions and warnings herein may result in serious injury to you or bystanders, or damage to your device or property. Guilin Zhishen Information Technology Co., Ltd (hereinafter referred to as “ZHIYUN”) reserves all rights for final explanation of this instruction and other documents related to this product. The information is subject to update without notice. Please visit www.zhiyun-tech.com to obtain the latest product information.

By using this product, you hereby signify that you have read this document carefully and

that you understand and agree to abide by the terms and conditions\ herein. You agree that you are solely responsible for your own conduct while using this product, and for any consequences thereof. You agree to use this product only for purposes that are proper and in accordance with all terms, precautions, practices, policies and guidelines ZHIYUN has made and may make available. ZHIYUN accepts no liability for damage, injury or any legal responsibility incurred directly or indirectly from the use of this product. Users shall observe safe and lawful practices including, but not limited to, those set forth herein. ZHIYUN™ is the trademark of Guilin Zhishen Information Technology Co., Ltd and its affiliates. All product names or trademarks referred to herein are trademarks or registered trademarks of their respective holders.

Reading Tips

- Legends Hints and Tips Important

Safe Operation Instructions

Read the ENTIRE User Guide to become familiar with the features of this product before operating. Failure to operate the product correctly can result in damage to the product or personal property and cause serious injury. This is a sophisticated product. It must be operated with caution and common sense and requires some basic mechanical ability. Failure to operate this product in a safe and responsible manner could result in injury or damage to the product or other property. This product is not intended for use by children without direct adult supervision. DO NOT use with incompatible components or in any way otherwise as mentioned or instructed in the product documents provided by ZHIYUN. The safety guidelines herein contain instructions for safety, operation and maintenance. It is essential to read and follow all of the instructions and warnings in the User Guide, prior to assembly, setup or use, in order to operate the product correctly and avoid damage or serious injury.

Warranty Period

1. Customers are entitled to replacement or free repair service in case of quality deficits found in the product within 15 days upon receipt of the product.
2. Customers are entitled to free repair service from ZHIYUN for any product proven

defective in material or workmanship that results in product failure during normal consumer usage and conditions within the valid warranty period, which is 12 months from the date of sale. However, the warranty period varies by product component and country of purchase. Please contact our after-sales service team on ZHIYUN

Warranty Exclusions

1. Products are subjected to unauthorized repair, misuse, collision, neglect, mishandling, soaking, accident, and unauthorized alteration.
2. Products subjected to improper use or whose labels or security tags have been torn off or altered.
3. Products whose warranty has expired.
4. Products damaged due to force majeure, such as fire, flood, lightning, etc.

Warranty Claim Procedure

1. If failure or any problem occurs to your product after purchase, please contact a local agent for assistance, or you can always contact ZHIYUN's customer service through email at info@zhiyun-tech.com or website at www.zhiyun-tech.com.
2. Your local agent or ZHIYUN's customer service will guide you through the whole service procedure regarding any product issue or problem you have encountered. ZHIYUN reserves the right to reexamine damaged or returned products.

Customer Information

Customer Name:

Phone Number:

Address:

Sales Information

Sales date:

Product Serial Number:

Distributor Name:

Distributor's Contact Number:

First Maintenance Record

Service Date:

Repairman Signature:

Cause of Problem:

Service Result:

☐ Solved☐ Unsolved☐ Refunded/Replaced



Website



Weibo



Vimeo



Google+



Facebook
(Zhiyun Support)



Facebook
(Zhiyun Tech)



Youku



Youtube



Wechat



Instagram

Contact

- Tel: +86 400 900 6868
- USA Hotline: +1 [808-319-6137](tel:8083196137), 9:00-18:00 GMT-7, Mon-Fri
- Europe Hotline: +49 0 61018132180, 10:00-17:00 GMT+1, Mon-Fri
- Web: www.zhiyun-tech.com

- E-mail: info@zhiyun-tech.com
- Address: 09 Huangtong Road, Tieshan Industrial Zone, Qixing District, Guilin, 541004, Guangxi, China



For full product information, please visit ZHIYUN's official website: Content on www.zhiyun-tech.com is subject to update without notice. ZHIYUN™ is a trademark of ZHISHEN. All product names or brands referred to hereunder may be trademarks or registered trademarks of their respective holders. Copyright © 2024 ZHISHEN. All rights reserved.

FCC Statement

FCC Caution.

This device complies with part 15 of the FCC Rules. Operation is subject to the following two conditions:

1. This device may not cause harmful interference, and
2. this device must accept any interference received, including interference that may cause undesired operation.

Any Changes or modifications not expressly approved by the party responsible for compliance could void the user's authority to operate the equipment.

Note: This equipment has been tested and found to comply with the limits for a Class B digital device, pursuant to part 15 of the FCC Rules. These limits are designed to provide reasonable protection against harmful interference in a residential installation. This equipment generates uses and can radiate radio frequency energy and, if not installed and used in accordance with the instructions, may cause harmful interference to radio communications. However, there is no guarantee that interference will not occur in a particular installation. If this equipment does cause harmful interference to radio or television reception, which can be determined by turning the equipment off and on, the user is encouraged to try to correct the interference by one or more of the following measures:

- Reorient or relocate the receiving antenna.
- Increase the separation between the equipment and receiver.
- Connect the equipment into an outlet on a circuit different from that to which the receiver is connected.
- Consult the dealer or an experienced radio/TV technician for help.

This equipment complies with FCC radiation exposure limits set forth for an uncontrolled environment. This equipment should be installed and operated with minimum distance 20cm between the radiator & your body.

ISED Statement

The device contains licence-exempt transmitter(s)/receiver(s) that comply with Innovation, Science and Economic Development Canada's licence-exempt RSS(s). Operation is subject to the following two conditions:

1. This device may not cause interference.
2. This device must accept any interference, including interference that may cause undesired operation of the device.


RF exposure statement:

The equipment complies with IC Radiation exposure limit set forth for an uncontrolled environment. This equipment should be installed and operated with minimum distance 20cm between the radiator and your body.

FAQ

- **Q: Is the ZHIYUN CINEPEER CX50RGB COB Light waterproof?**
 - A: No, this product is not waterproof. Avoid contact with any liquid and do not use it in rainy or humid conditions.
- **Q: How should I charge the battery of the CX50RGB?**
 - A: Power off the device before charging. Connect a 24V/2.7A DC power adapter to the DC power supply port and an AC socket for power.

Documents / Resources

	ZHIYUN CX50RGB COB Light [pdf] User Guide PLX109, ZYPLX109, 2AIHFZYPLX109, CX50RGB COB Light, CX50RGB, COB Light, Light
---	--

References

- [User Manual](#)

2AIHFZYPLX109, COB Light, CX50RGB, CX50RGB COB Light, Light, PLX109, ZHIYUN, ZHIYUN ZYPLX109

Leave a comment

Your email address will not be published. Required fields are marked *

Comment *

Name

Email

Website

☐ Save my name, email, and website in this browser for the next time I comment.

Post Comment

Search:

e.g. whirlpool wrf535swhz

Search

[Manuals+](#) | [Upload](#) | [Deep Search](#) | [Privacy Policy](#) | [@manuals.plus](#) | [YouTube](#)

This website is an independent publication and is neither affiliated with nor endorsed by any of the trademark owners. The "Bluetooth®" word mark and logos are registered trademarks owned by Bluetooth SIG, Inc. The "Wi-Fi®" word mark and logos are registered trademarks owned by the Wi-Fi Alliance. Any use of these marks on this website does not imply any affiliation with or endorsement.