

ZHEJIANG YZCW10 App Lights and Smart Color Changing Lights



# ZHEJIANG YZCW10 App Lights and Smart Color Changing Lights User Guide

[Home](#) » [ZHEJIANG](#) » ZHEJIANG YZCW10 App Lights and Smart Color Changing Lights User Guide 

## Contents

- [1 ZHEJIANG YZCW10 App Lights and Smart Color Changing Lights](#)
- [2 Product Usage Instructions](#)
- [3 Product Parameter](#)
- [4 Download Surplife APP](#)
- [5 How to connect to Surplife App?](#)
- [6 FCC WARNING](#)
- [7 Frequently Asked Questions](#)
- [8 Documents / Resources](#)
  - [8.1 References](#)
- [9 Related Posts](#)

# ZHEJIANG

**ZHEJIANG YZCW10 App Lights and Smart Color Changing Lights**



### Specifications:

- **Category:** Domination Principle
- **APP Operation Platform:** Ble Surplife, Android 7.0 or iOS 12.0 or later
- **Input Voltage:** DC 5V
- **Supported Driver IC:** YZ-CW-10
- **LED Controller:** Built-in
- **Working Temperature:** -20°C to +55°C
- **Control Distance:** Visible distance 30 meters
- **Certification:** CE, RoHS, FCC
- **Net Weight:** 630g
- **Dimension:** 1m x 1m / 2m x 2m ... 1000m x 1000m

### Product Usage Instructions

1. **Download Surplife APP:** Download Surplife APP from App Store and Google Play Store, or scan the QR code.
2. **How to connect to Surplife App?**
  1. Register/Login your Surplife account.
  2. Turn on the device and enable your phone's Bluetooth.
  3. Enter Surplife app, tap add device or click + to add the device.
  4. Rename the device and select a room for it.

### Product Parameter

- Category LED Controller
- Domination Principle Ble
- APP Surplife
- Operation Platform Android 7.0 or IOS12.0 or later

- Input Voltage DC5V
- Supported Driver IC YZ-CW-10
- Working Temperature -20~+55°C
- Control Distance Visible distance 30M
- Certification CE, ROHS, FCC
- Net Weight 630g
- Dimension 1M\*1M/2M\*2M...1000M\*1000M

## Download Surplife APP

Download “Surplife” APP from App Store and Google Play Store, or scan the QR code.

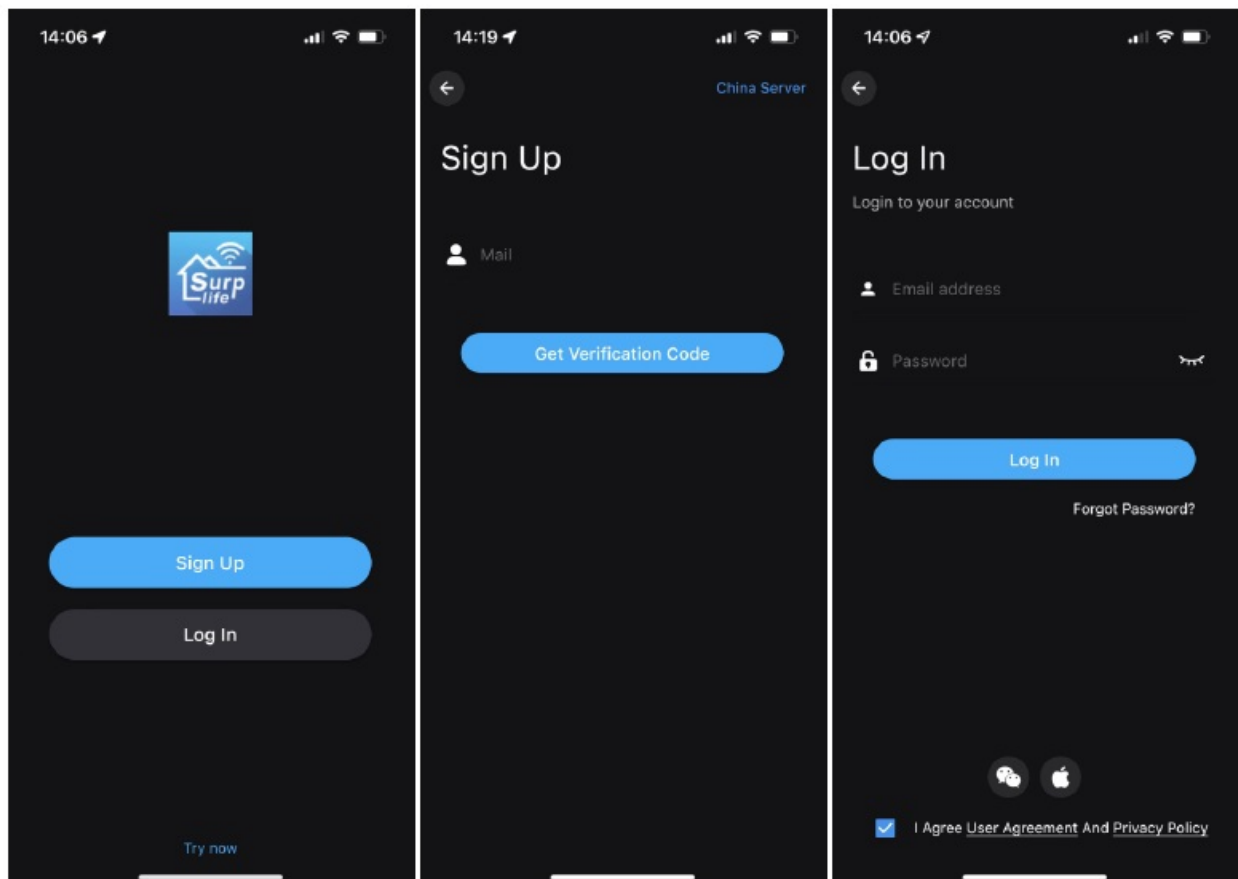


Surplife APP

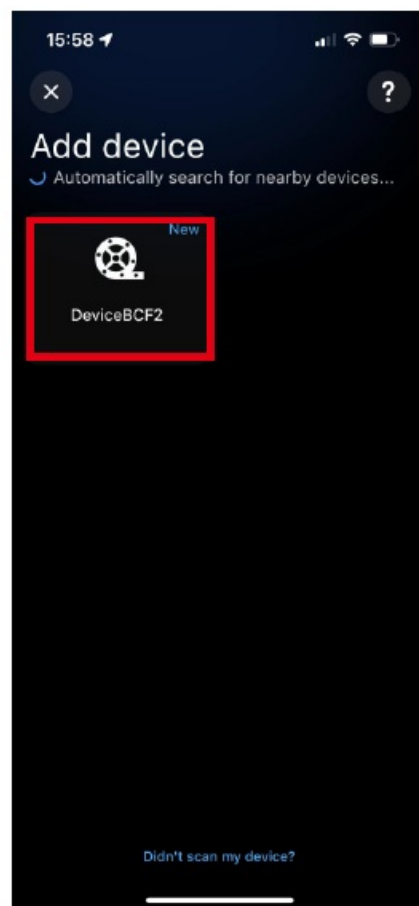
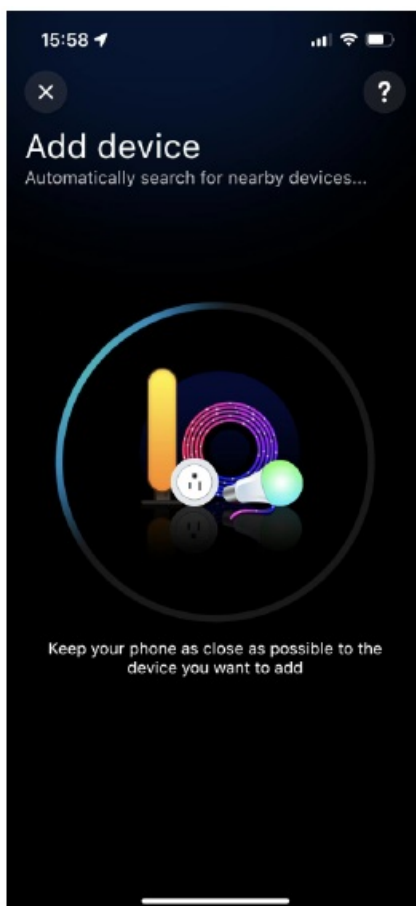
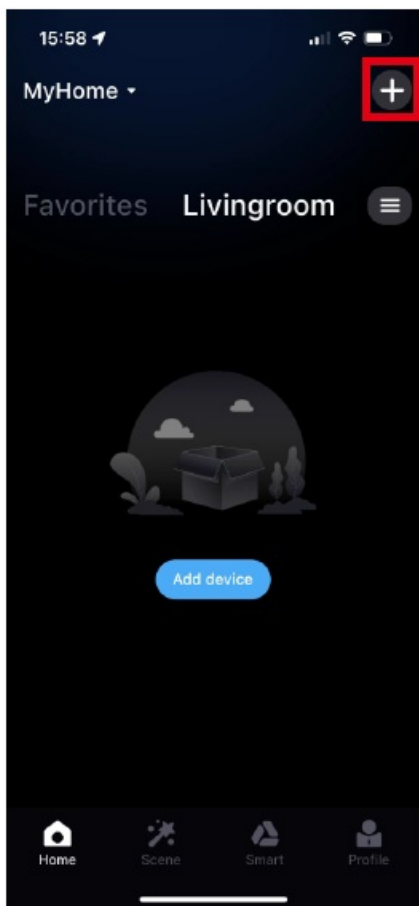


## How to connect to Surplife App?

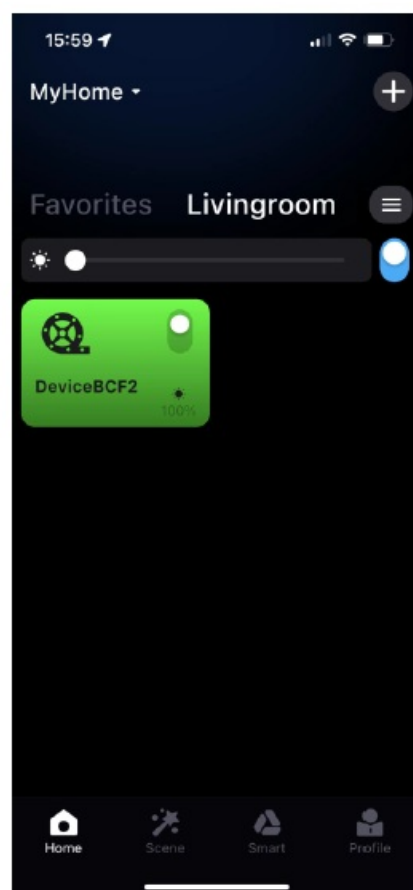
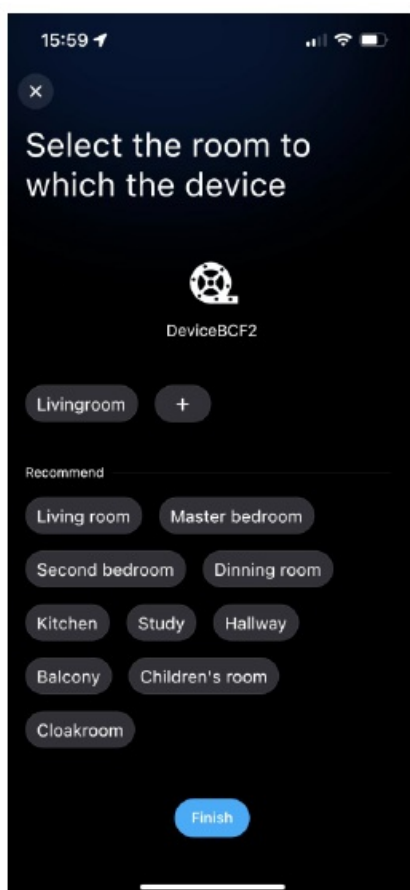
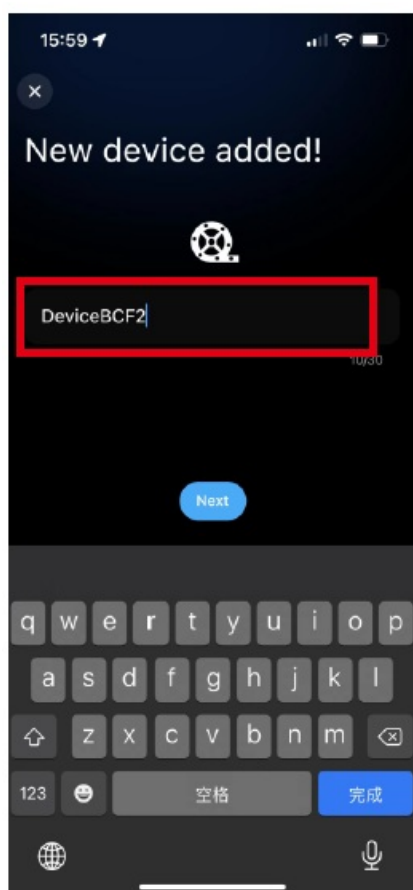
1. Register/Login your Surplife account.



2. Turn on the device and enable your phone's bluetooth.
3. Enter "Surplife" app, tap "add device" or click "+" to add the device.



4. Rename the device and select a room for it.



This device complies with part 15 of the FCC Rules. Operation is subject to the following two conditions:

1. this device may not cause harmful interference, and
2. this device must accept any interference received, including interference that may cause undesired operation.

Any changes or modifications not expressly approved by the party responsible for compliance could void the user's authority to operate the equipment.

**NOTE:** This equipment has been tested and found to comply with the limits for a Class B digital device, pursuant to Part 15 of the FCC Rules. These limits are designed to provide reasonable protection against harmful interference in a residential installation. This equipment generates, uses and can radiate radio frequency energy and, if not installed and used in accordance with the instructions, may cause harmful interference to radio communications. However, there is no guarantee that interference will not occur in a particular installation. If this equipment does cause harmful interference to radio or television reception, which can be determined by turning the equipment off and on, the user is encouraged to try to correct the interference by one or more of the following measures:

- Reorient or relocate the receiving antenna.
- Increase the separation between the equipment and receiver.
- Connect the equipment into an outlet on a circuit different from that to which the receiver is connected.
- Consult the dealer or an experienced radio/TV technician for help.

To maintain compliance with FCC's RF Exposure guidelines, This equipment should be installed and operated with minimum 20cm distance between the radiator and your body: Use only the supplied antenna.

## Frequently Asked Questions

How to set up your Bluetooth LED curtain light?

Enable your Bluetooth on your phone. Then power on the LED curtain light. Open Surplife App, the App can directly connect to the device. It can automatically match the light without other steps, and you can experience the smart light simply and quickly.

How can I do if connecting the Bluetooth device or adding a new device failed?

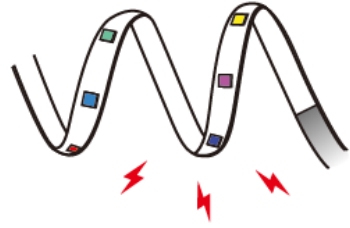
Please power off the LED strip light, then turn it on again. If the problem can't be solved, please restart the phone. Scan the Instruction QR code to read the electronic manual or enter the APP FAQ to learn more.

How to set up your Bluetooth LED curtain light?

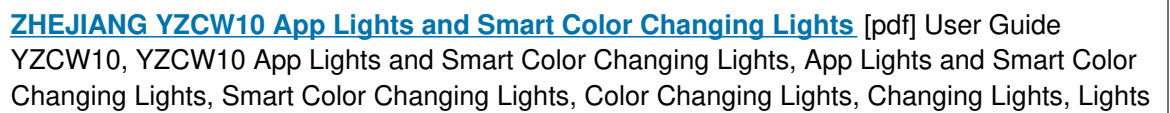
Enable your Bluetooth on your phone. Then power on the LED curtain light. Open Surplife App, the App can directly connect to the device. It can automatically match the light without other steps, and you can experience the smart light simply and quickly.

How can I do if connecting the Bluetooth device or adding new device failed?

Please power off the led strip light, then turn it on again, if the problem can't solve, please restart the phone.



## Documents / Resources



- User Manual

This website is an independent publication and is neither affiliated with nor endorsed by any of the trademark owners. The "Bluetooth®" word mark and logos are registered trademarks owned by Bluetooth SIG, Inc. The "Wi-Fi®" word mark and logos are registered trademarks owned by the Wi-Fi Alliance. Any use of these marks on this website does not imply any affiliation with or endorsement.