

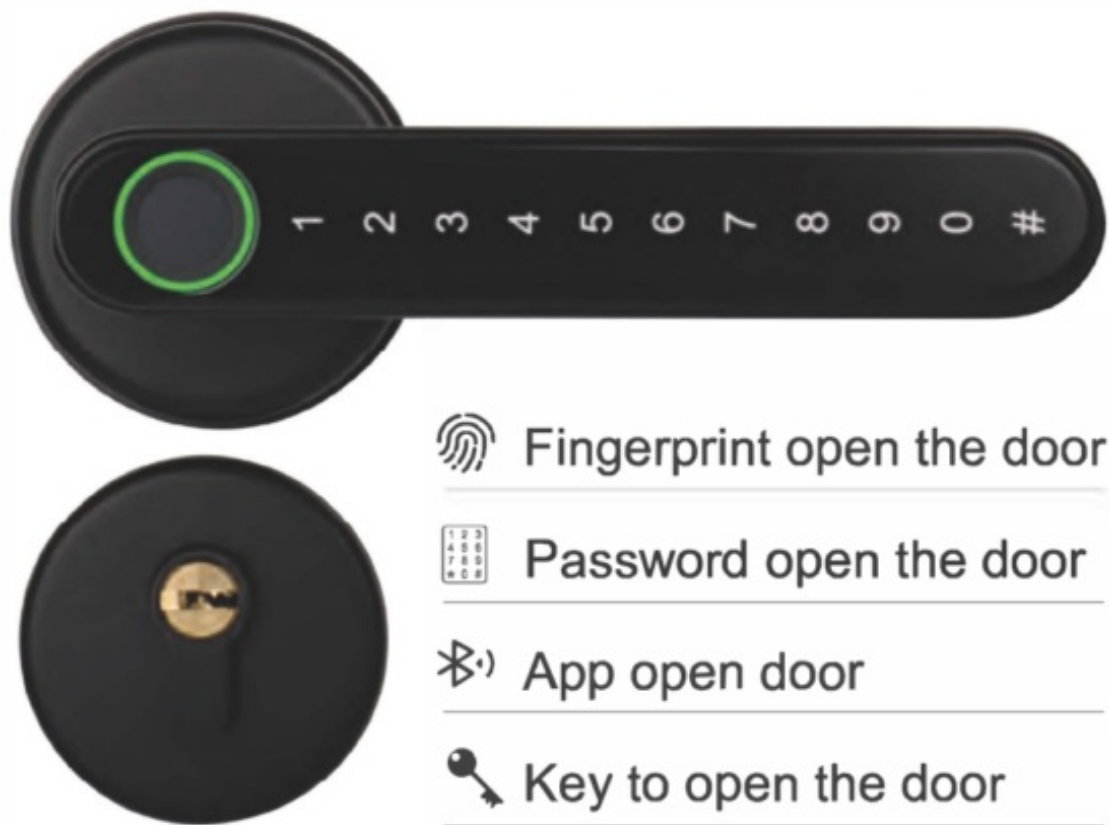


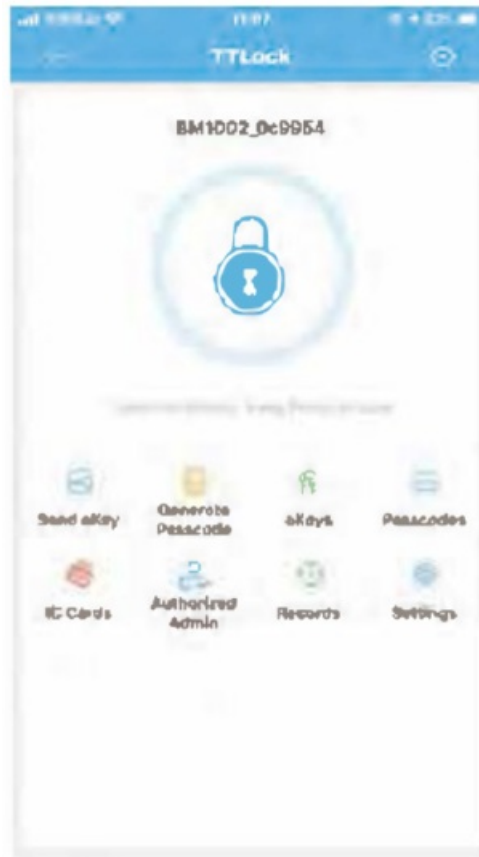
Zhejiang Xinnian Technology S1 Smart Lock User Manual

[Home](#) » [Zhejiang Xinnian Technology](#) » Zhejiang Xinnian Technology S1 Smart Lock User Manual 

Zhejiang

User Manual





Google Play

<https://play.google.com/store/apps/details?id=com.tongtongsuo.app>

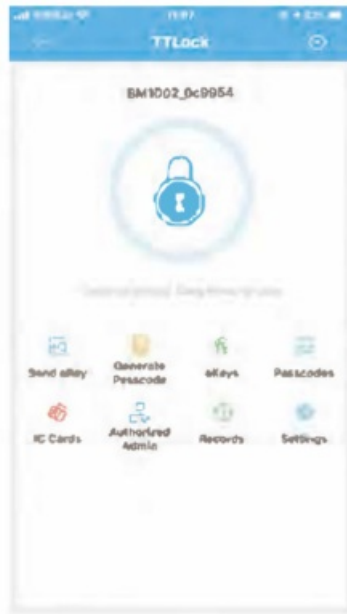
<https://itunes>

The software(iOS version) can be downloaded from the app store, and the Android version can be downloaded from the application store of Google play.

Contents

- 1 Registration and Login By App
- 2 Documents / Resources
- 3 Related Posts

Registration and Login By App



No lock bound with App



lock bound with App

There is no lock or key data in the user's account, when TTLock App is used for the first time The user can add a lock in the front page. If A lock is already added in the account, the lock information will be displayed.

Add Lock By App



Add a lock

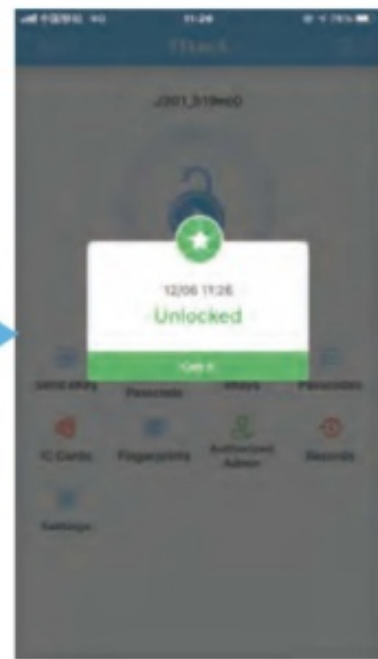
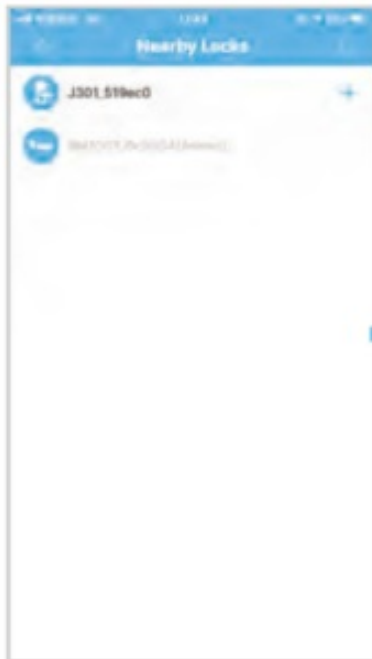
Select
"Door Lock"

Light up
touch screen

Registration and Login By App



TTLock users can use their phone number and email to register their accounts. Currently, TTLock App has supported the phone number registration in 159 countries and regions. When users are registering their accounts, the verification code will be sent to the mobile phone or the email address. After the verification is passed, the registration is successful, and then the page will jump directly to the home page.

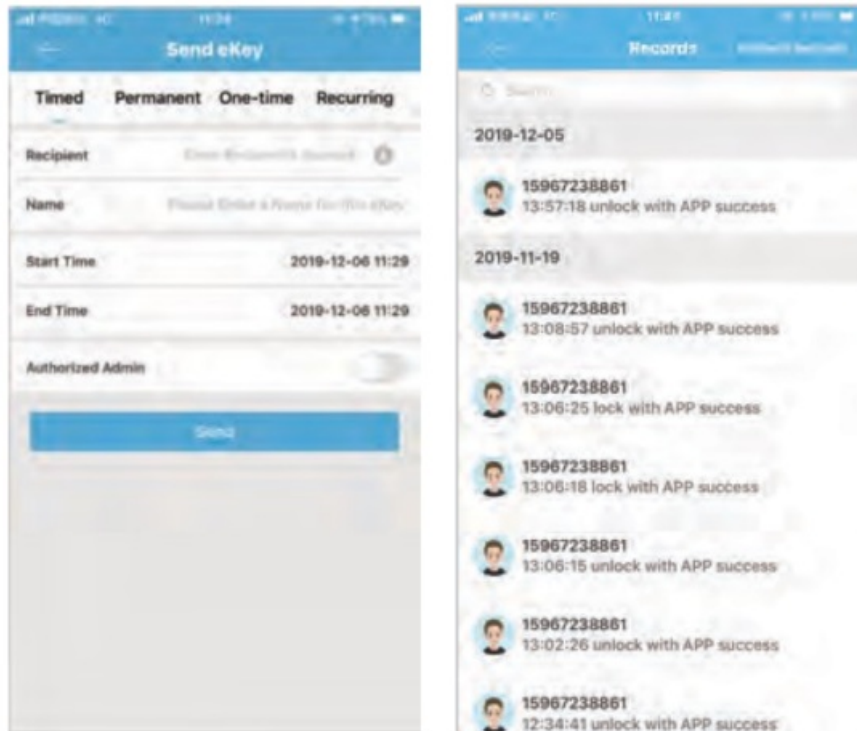


Select lock

Input lock name

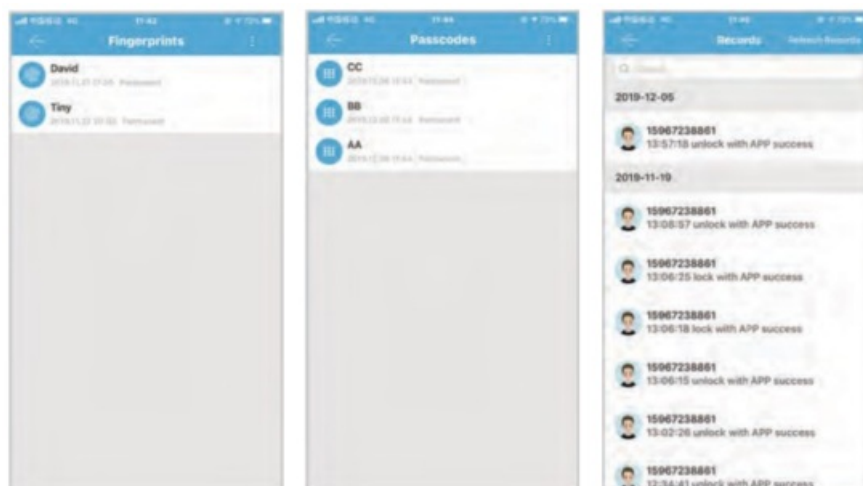
Operation
Successfully

Send Key By App



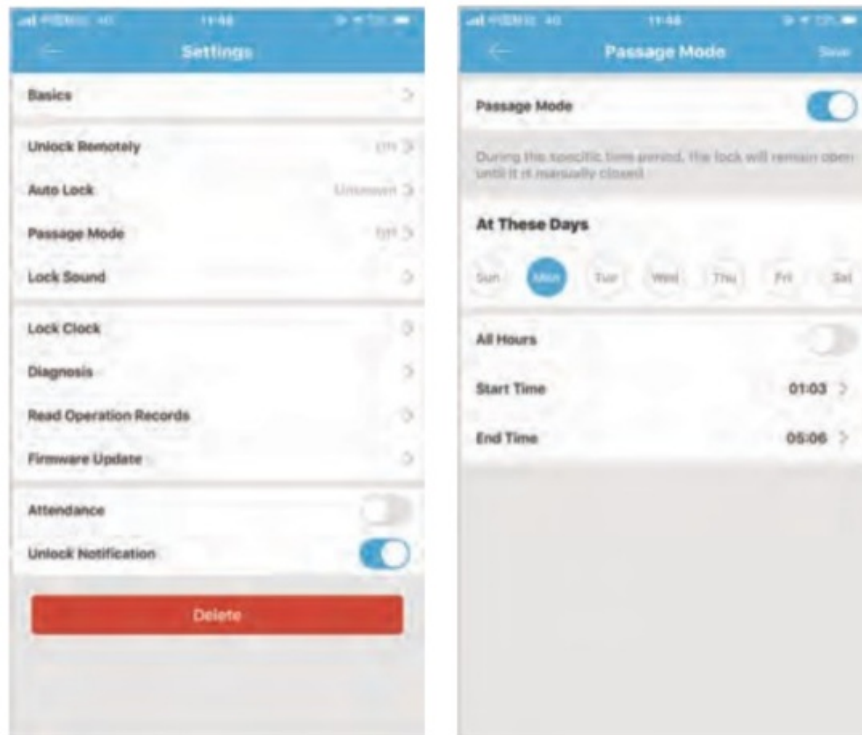
After adding the lock successfully, the user has the highest authority of the lock, which is the administrator of the lock. The user can send the Bluetooth key to others by setting the time limit and has the right to select the limited time, permanent, or one-time Bluetooth key. The key is sent to the recipient's mobile phone or email and the recipient will get the key and authority of the lock in the TTLock App. Administrators can manage all the keys they send out, including clearing keys, resetting keys, sending keys, adjusting the time limit of the keys, and viewing the access records.

Registration and Login By App

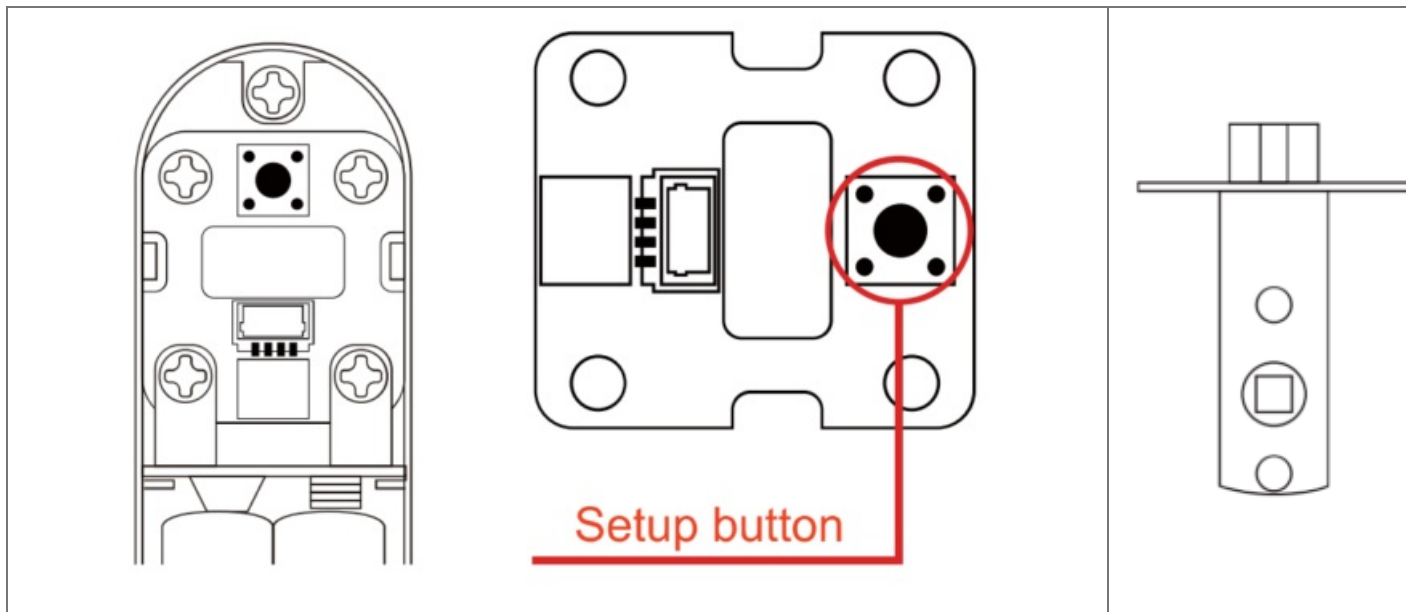


In the main interface of the TTLock App, select Passcodes or IC Cards, and click on the upper right to add passcodes and IC cards. You can add users for a limited time or permanent access. The access records can be queried in the main interface. For example: add passcodes

Passage Mode



In the main interface of the app, select the passage mode in the settings, and the date of the passage mode can be set, and the start time and end time of the passage mode can also be set. After the passage mode is activated, everyone can directly unlock the door without any access permission. The passage mode can be turned off by clicking again.



Single tongue standard lock body (60-70 lock body) Double tongue standard lock body (5845 lock body) Please contact our staff in advance to confirm whether the door lock is compatible with your door

This device complies with part 15 of the FCC Rules. Operation is subject to the following two conditions: (1) This device may not cause harmful interference, and (2) this device must accept any interference received, including interference that may cause undesired operation.


Any changes or modifications not expressly approved by the party responsible for compliance could void the user's authority to operate the equipment.

Note: This equipment has been tested and found to comply with the limits for a Class B digital device, pursuant to part 15 of the FCC Rules. These limits are designed to provide reasonable protection against harmful interference in a residential installation. This equipment generates uses and can radiate radio frequency energy and, if not installed and used in accordance with the instructions, may cause harmful interference to radio communications. However, there is no guarantee that interference will not occur in a particular installation. If this equipment does

cause harmful interference to radio or television reception, which can be determined by turning the equipment off and on, the user is encouraged to try to correct the interference by one or more of the following measures:

- Reorient or relocate the receiving antenna.
- Increase the separation between the equipment and receiver.
- Connect the equipment into an outlet on a circuit different from that to which the receiver is connected.
- Consult the dealer or an experienced radio/TV technician for help.

Documents / Resources

	<p>Zhejiang Xinnian Technology S1 Smart Lock [pdf] User Manual S1, 2A4U2-S1, 2A4U2S1, S1, Smart Lock</p>
---	--