

Zgo Technologies ZGX Crossbar Dual Monitor Single Arm



Zgo Technologies ZGX Crossbar Dual Monitor Single Arm Instruction Manual

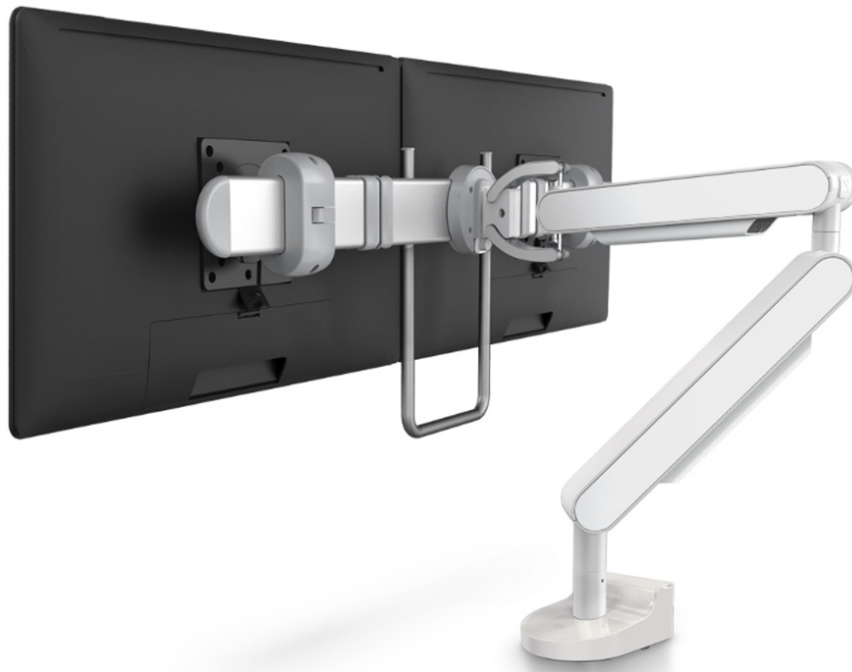
[Home](#) » [zgo technologies](#) » Zgo Technologies ZGX Crossbar Dual Monitor Single Arm Instruction Manual 

Contents

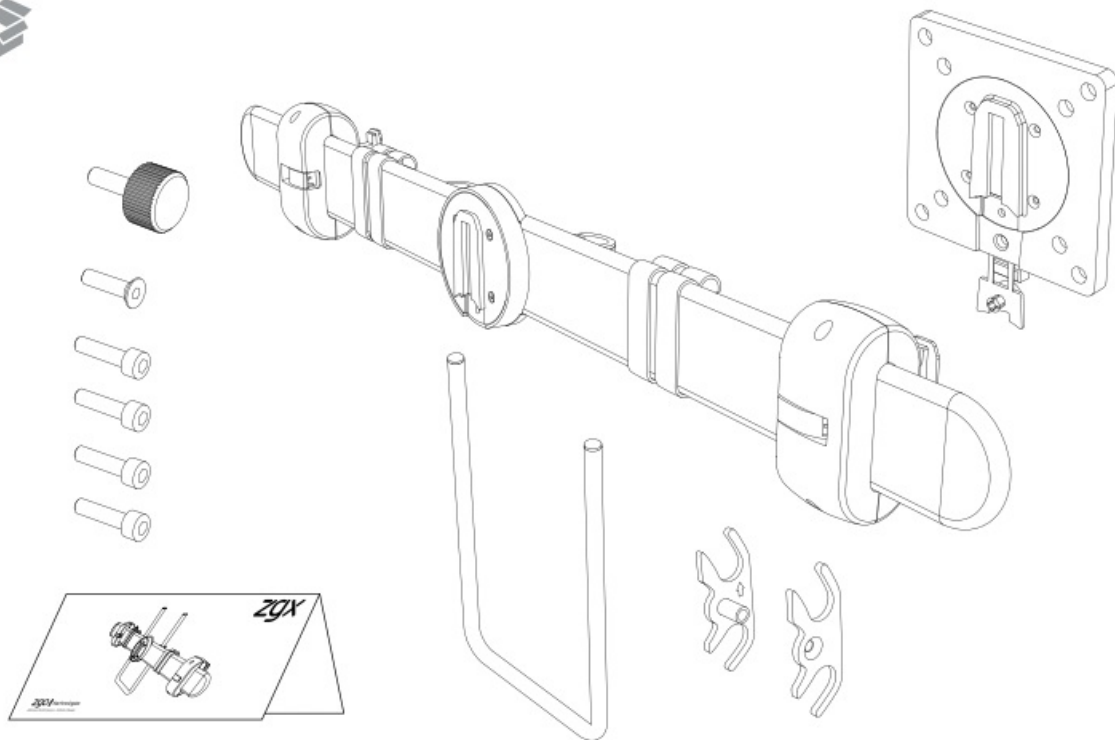
- [1 Zgo Technologies ZGX Crossbar Dual Monitor Single Arm](#)
- [2 Parts](#)
- [3 Assembly Instructions](#)
- [4 Specifications](#)
- [5 FAQ](#)
- [6 Documents / Resources](#)
 - [6.1 References](#)
- [7 Related Posts](#)

zgo | technologies

Zgo Technologies ZGX Crossbar Dual Monitor Single Arm



Parts



Assembly Instructions

Components Overview

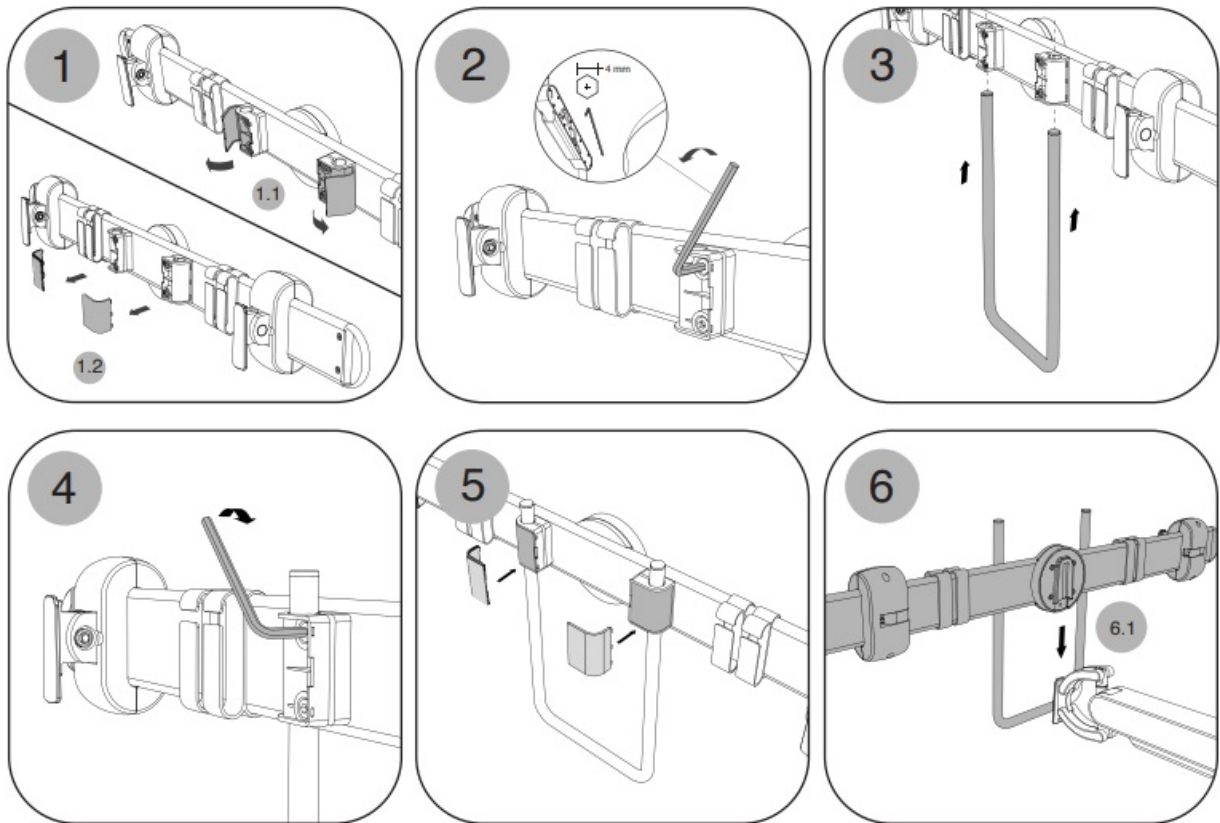
The diagram provides an exploded view of the assembly components which include various screws, brackets, a hex key, and the main structural parts of the product.

Assembly Steps

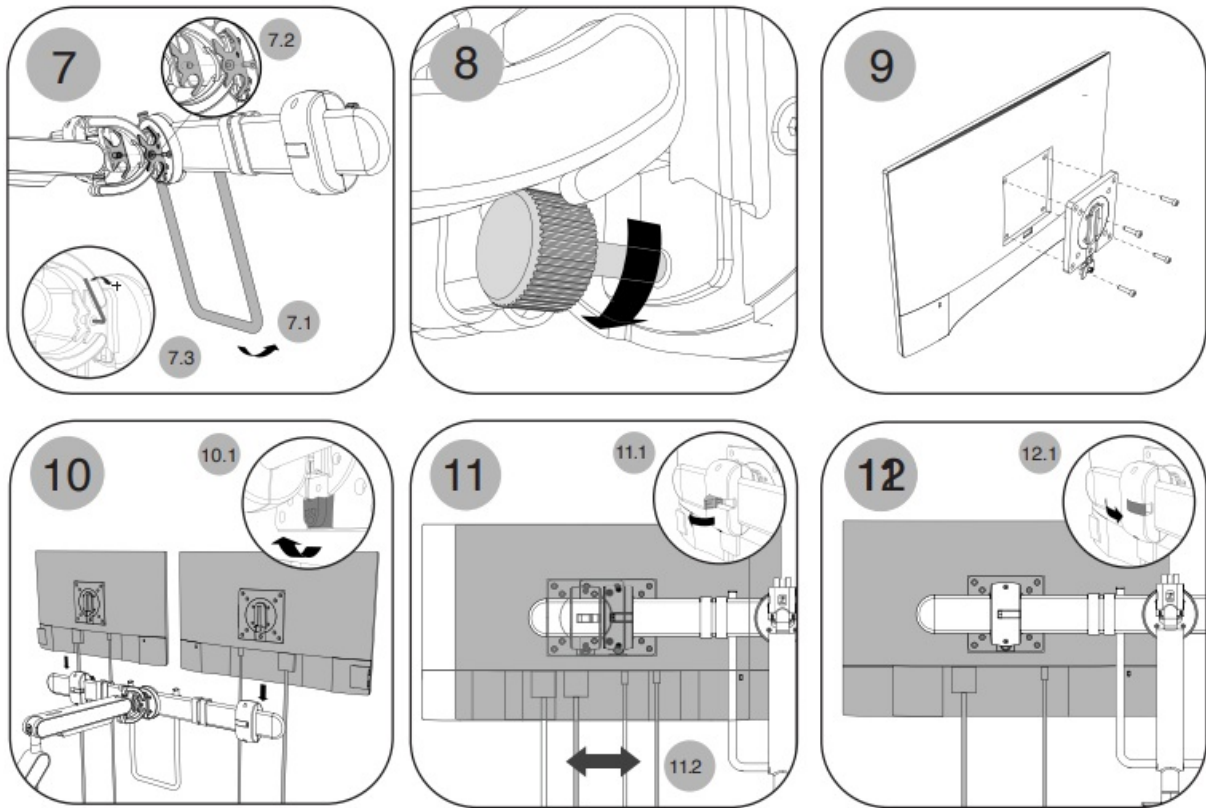
1. Attach the small brackets to the main bar using screws, as indicated by the inset images labeled 1.1 and 1.2.
2. Use the hex key to tighten the screws. Ensure a 4 mm gap between the bracket and the bar, as shown in the

close-up view.

3. Insert the U-shaped bracket into the main bar, sliding it down as indicated by the downward arrows.
4. Rotate the U-shaped bracket to a horizontal position as indicated by the curved arrow.
5. Attach the electronic component to the main bar with its cable facing outward.
6. Secure the electronic component by snapping the clip indicated by the circle labeled 6.1.



7. Insert the hex key into the hole and rotate to adjust, as shown in the detailed circles labeled 7.1 and 7.3. Ensure the lock, indicated by 7.2, is in place.
8. Position the black rubber component against the main bar, as depicted in the close-up view.
9. Mount the square backing plate to a flat surface using screws, as illustrated in the perspective view.
10. Attach the main assembly to the wall, aligning it with the square backing plate, as highlighted in the inset labeled 10.1.
11. Slide the main assembly horizontally as indicated by the arrows to align it with the mounting holes, as detailed in insets 11.1 and 11.2.
12. Secure the assembly onto the wall by tightening the screws through the mounting holes, as shown in the close-up view labeled 12.1.



Specifications

Component	Specification
Hex Key Gap	4 mm
Electronic Component Clip	Item 6.1

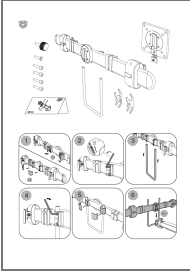
FAQ

- What should be the gap when tightening the brackets?
 - A gap of 4 mm is required between the bracket and the bar.
- How do I ensure the electronic component is properly secured?
 - The electronic component should be snapped into place using the clip labeled 6.1.
- How is the main assembly attached to the wall?
 - The main assembly is slid into place on the square backing plate and secured by tightening the screws through the mounting holes.

Manufacturer Information

The document includes the logo of ZGO Technologies, indicating the manufacturer of the product, with the tagline “Optimal Performance. Infinite Design.”

Documents / Resources

	<p>Zgo Technologies ZGX Crossbar Dual Monitor Single Arm [pdf] Instruction Manual ZGX Crossbar Dual Monitor Single Arm, ZGX, Crossbar Dual Monitor Single Arm, Dual Monitor Single Arm, Monitor Single Arm, Single Arm</p>
---	--

References

- [User Manual](#)

[Manuals+](#). [Privacy Policy](#)

This website is an independent publication and is neither affiliated with nor endorsed by any of the trademark owners. The "Bluetooth®" word mark and logos are registered trademarks owned by Bluetooth SIG, Inc. The "Wi-Fi®" word mark and logos are registered trademarks owned by the Wi-Fi Alliance. Any use of these marks on this website does not imply any affiliation with or endorsement.